

COASTAL RAIL TRAIL

ENCINITAS – E STREET TO CHESTERFIELD DRIVE

COMMUNITY MEETING

FEBRUARY 11, 2014

BEFORE WE GET STARTED

- ✓ Please sign in and provide contact information so we can include you in future activities
- ✓ Help yourself to refreshments
- ✓ When the presentation is over, please feel free to write on posters and maps, or use sticky notes to do so
- ✓ Please fill out comment cards

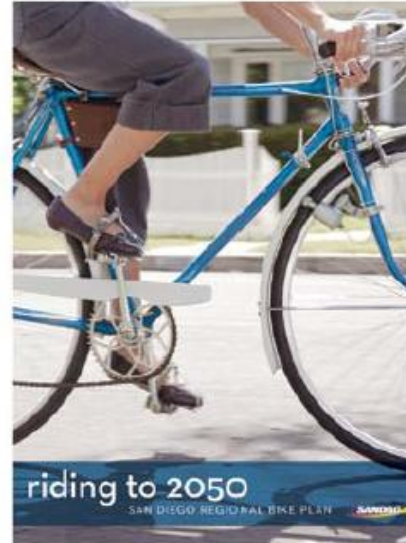
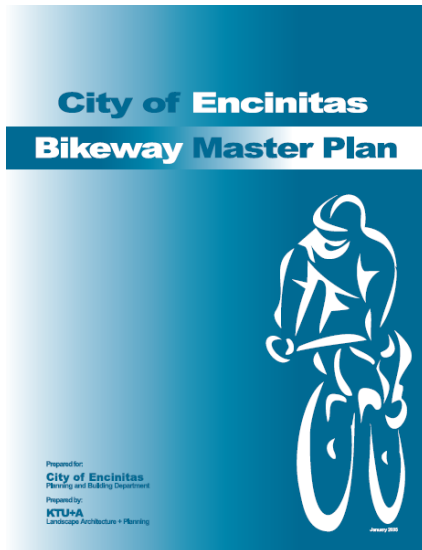
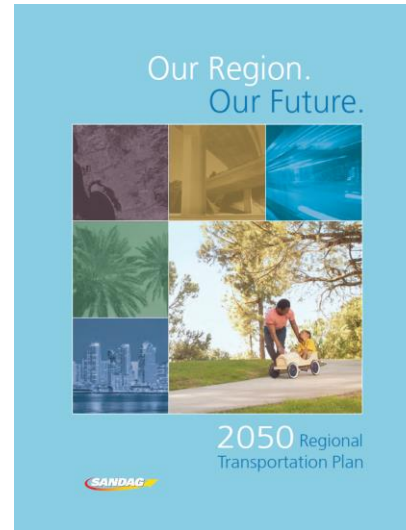
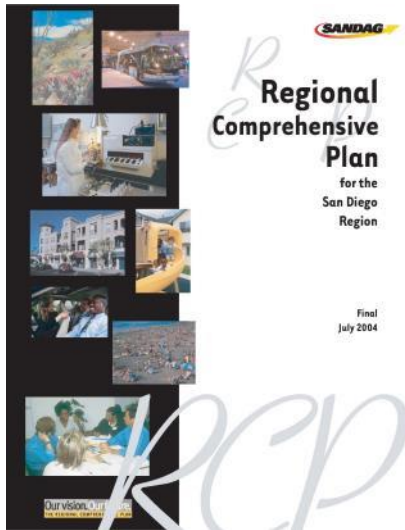
Thank you for being here!

WELCOME

Meeting Agenda:

- Introductions
- Planning Context and Active Transportation Overview
- Coastal Rail Trail Overview
- Project timeline
- Review of last meeting
- Encinitas Coastal Rail Trail Project Details
- Interactive map and poster viewing
- Next steps

REGIONAL PLANNING BACKGROUND & COORDINATION



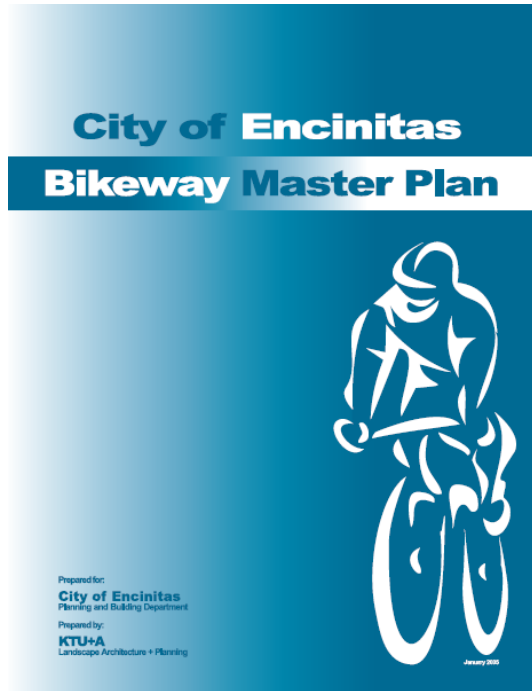
PRIORITY PROJECTS

Regional Bicycle Plan Early Action Program

This project is the first of three EAP projects planned in the City of Encinitas



REGIONAL and LOCAL COORDINATION



The Coastal Rail Trail is the Bikeway Master Plan's top priority project*

*Page 8-1 Bikeway Master Plan 2005

EVERYDAY PEOPLE, EVERYDAY TRIPS

No Way

**Interested,
but Concerned**
(potential bikeway users)

Anywhere, Anytime



ALL AGES AND ABILITIES



ACTIVE TRANSPORTATION PRINCIPLES & BENEFITS

- Convenience and safety
- Connect neighborhoods/regions/activity centers
- Enhance community interaction
- Economic development
- Quality of life and public health
- Transportation choices
- More people choosing to ride



A FEW PROJECT GOALS



In addition to Active Transportation Program overall goals, the project is intended to:

- To make a enjoyable place for people of all ages and abilities to ride bikes, walk and run
- To create safe routes to school and transit
- To maintain the scenic quality of the coast

COASTAL RAIL TRAIL OVERVIEW

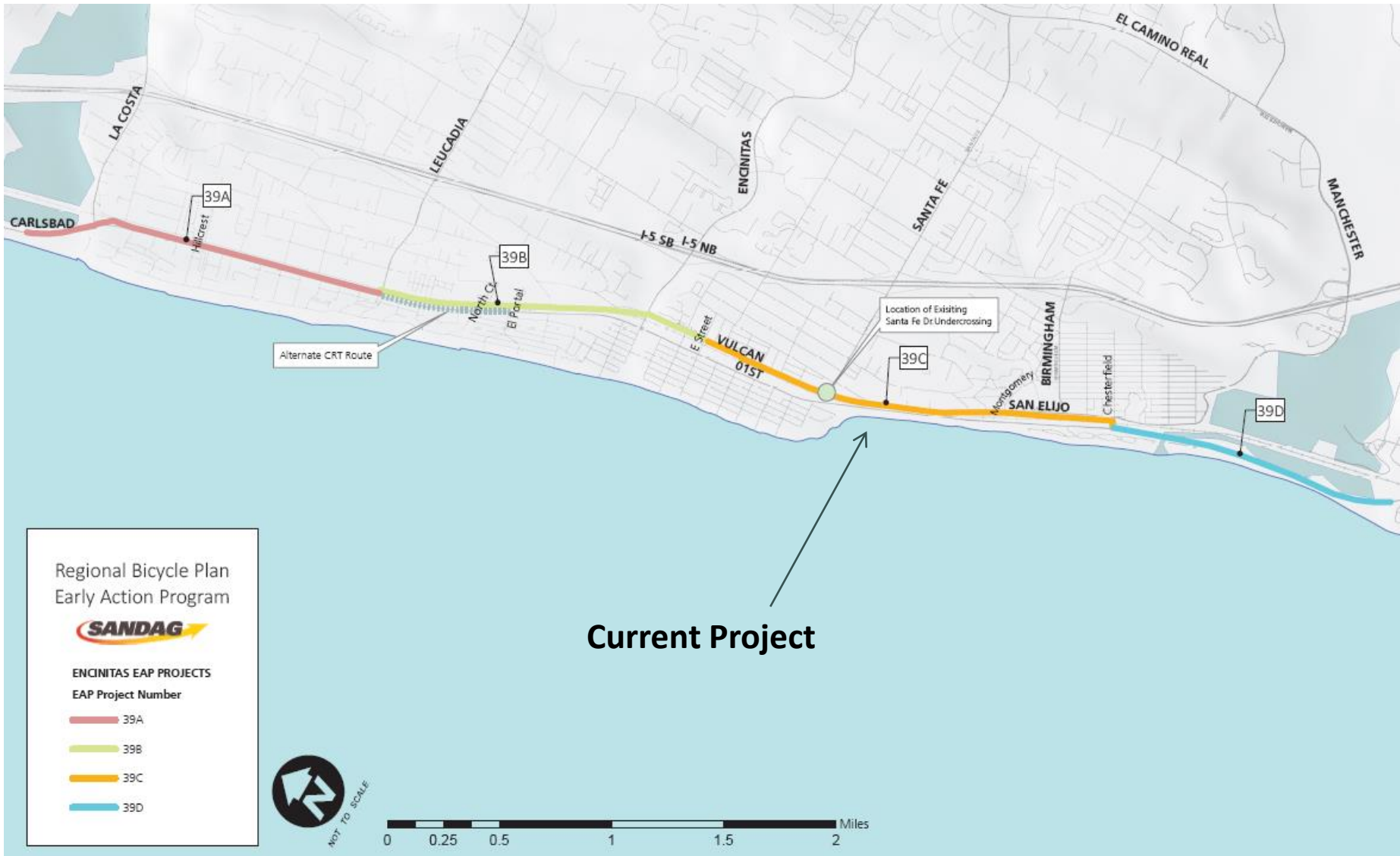


COASTAL RAIL TRAIL

- A multijurisdictional effort completed in October 2000
- Approximately 40 mile network of bikeways from Oceanside to Santa Fe Depot in Downtown San Diego
- The Study is the guiding document for implementing the various segments
- This project is part of the Coastal Rail Trail Network

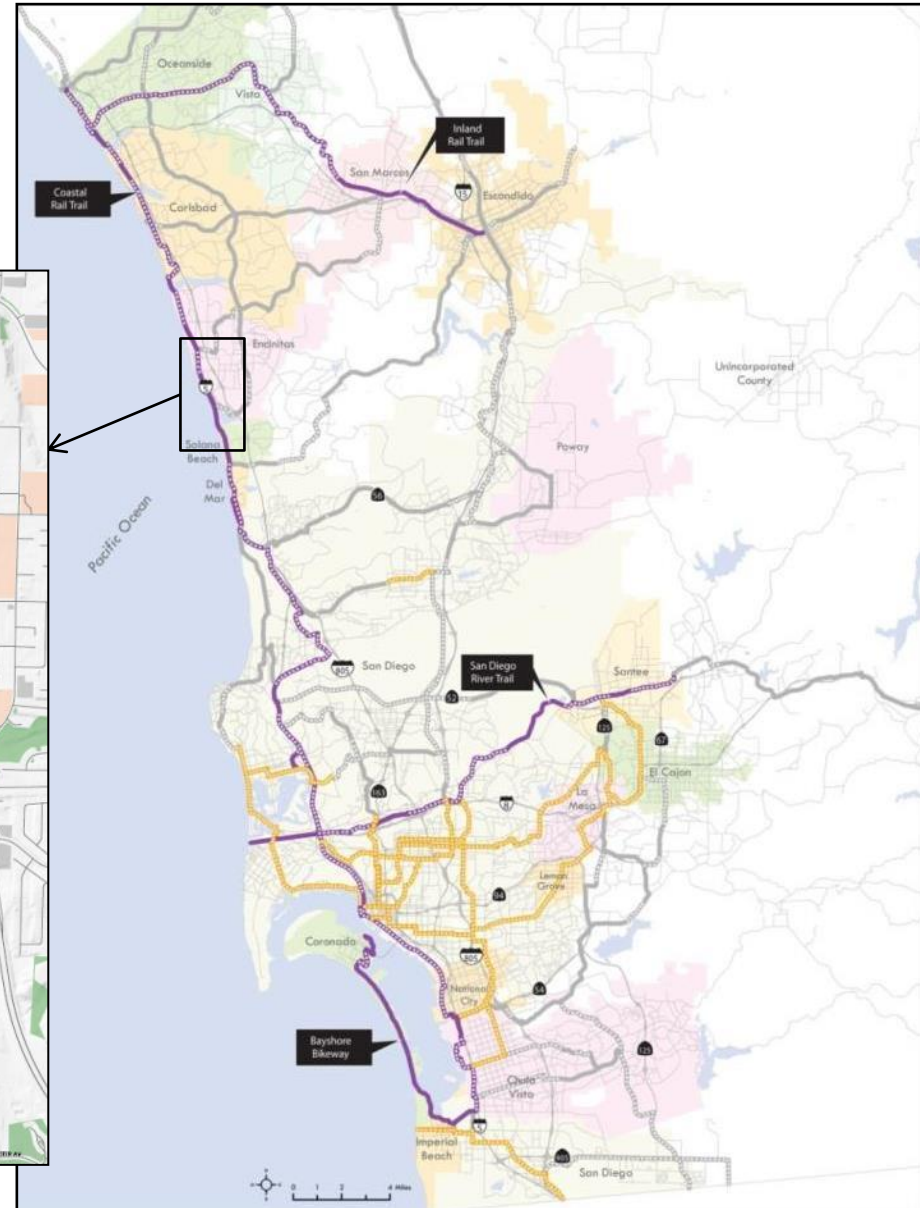


ENCINITAS COASTAL RAIL TRAIL SEGMENTS

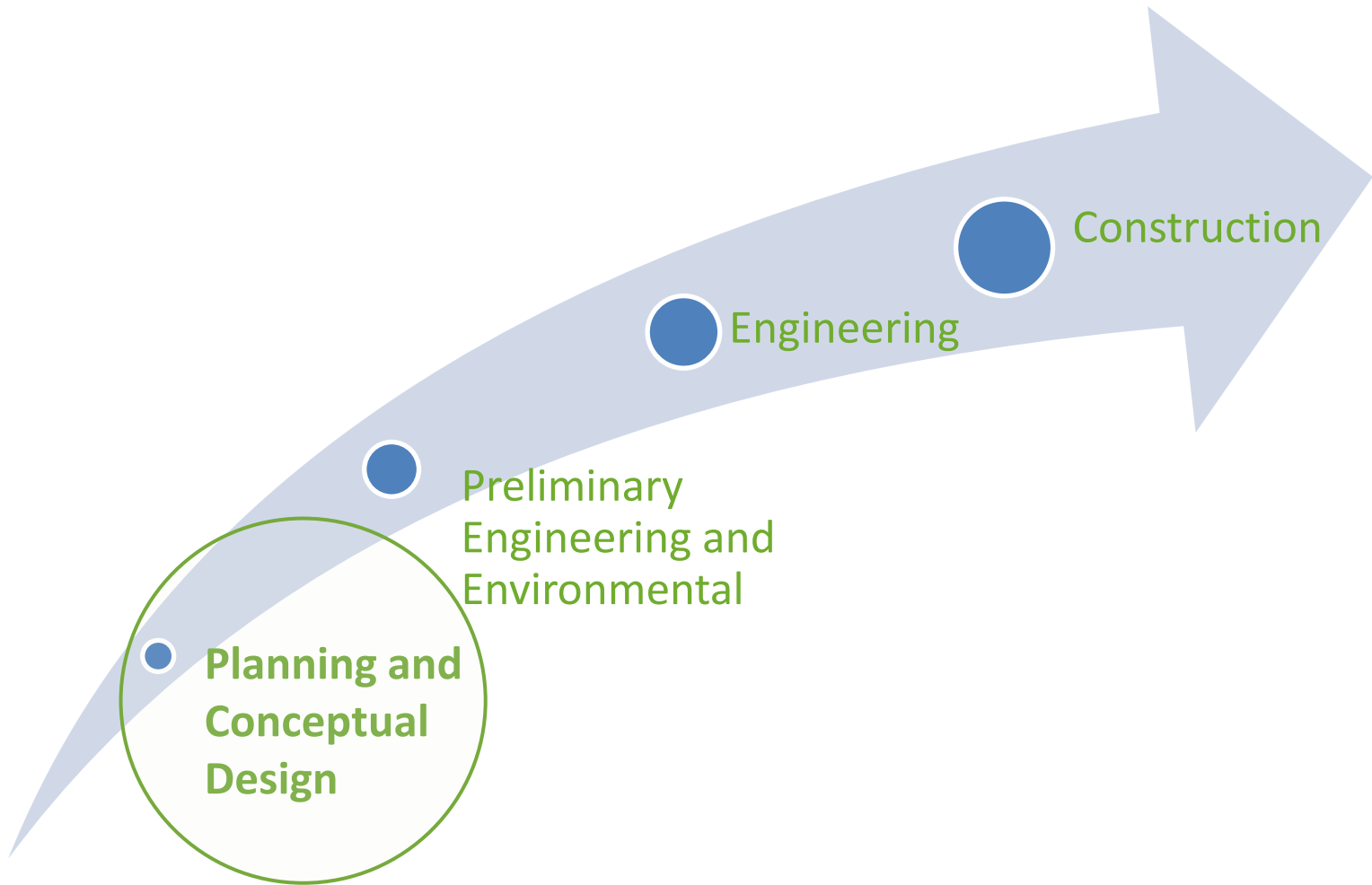


PLANNING & DESIGN PHASE

Coastal Rail Trail Encinitas



OVERALL PROJECT PHASES



PLANNING & CONCEPTUAL DESIGN PROCESS

- Perform technical studies—environmental, topographic/survey, traffic operations, utilities mapping
- Community Outreach and Workshops
 - Development of Conceptual Design Alternatives
 - Refine and Analyze Conceptual Design Alternatives
 - Arrive at consensus for Conceptual Design
- Finalize Preferred Conceptual Design

WHAT WE'VE LEARNED SO FAR

November 14, 2013 Open House

- People would like...
 - Minimal or no fencing
 - Minimal or no lighting
 - Keep parking
 - Not manicured – keep path modest and natural
 - A safe place to ride and alternatives to driving

WHAT WE'VE LEARNED SO FAR

November 14, 2013 Open House

- People would like...
 - Habitat restoration in lieu of fancy landscaping
 - Connections north and south
 - Cross the tracks and access the coast
 - Improved safety at Chesterfield/101 intersection
 - A railroad “Quiet Zone”

WHAT WE'VE LEARNED SO FAR

November 14, 2013 Open House

- Some people would like...
 - A wide path, and others a narrow path
 - A curvy path, and others a straight path
 - An unpaved path, and others a paved path – or a combination of both
 - No path at all

So our job is to arrive at a Coastal Rail Trail design that meets as many of the citizens desires as possible.

CONSIDERATIONS

- Right of Way limits
- Topography
- Vegetation/Environmental
- Views
- Parking
- NCTD Safety setbacks
- Utilities
- Other uses



ALTERNATIVES

- Path located closer to the railroad tracks – Alternate A
- Path located farther away from the railroad tracks – Alternate B

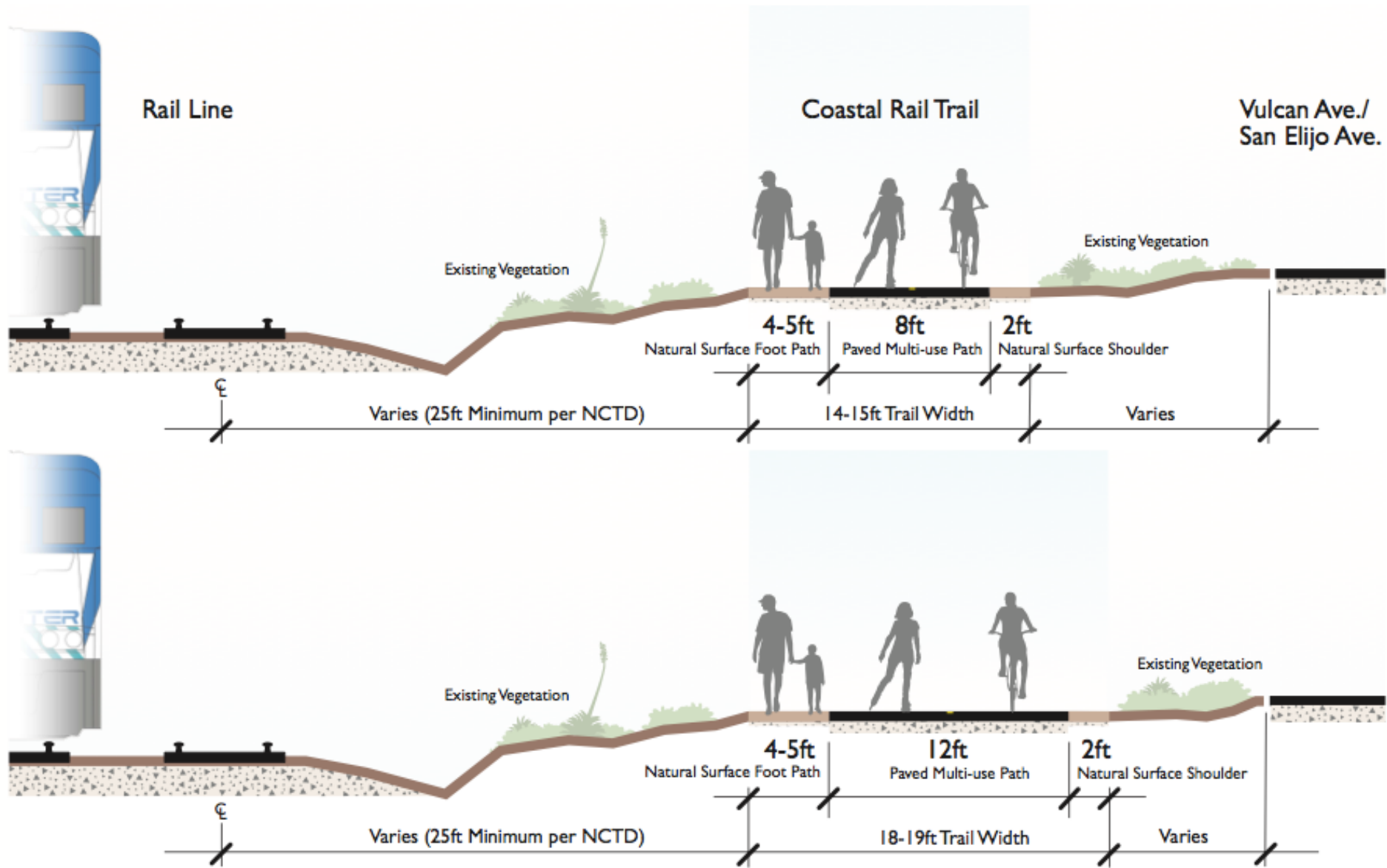


ALTERNATIVES

- The path could be narrower – 8-foot paved and 4 to 5-foot natural surface adjacent path, or it could be 10 to 12-foot paved with a 5-foot natural surface adjacent path (shown)



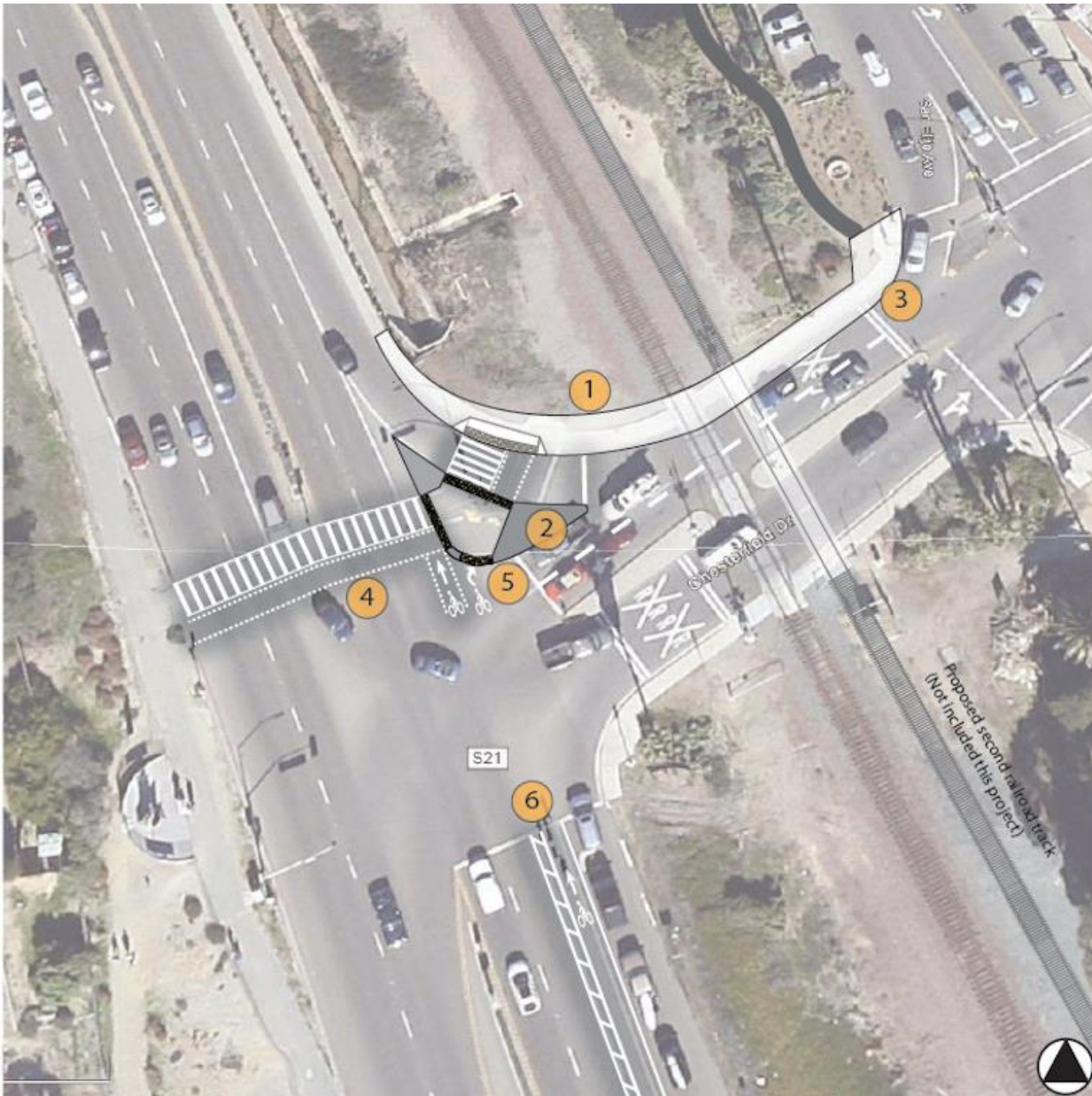
COMPARITIVE SECTION VIEWS



INTEGRATION WITH ON-ROAD BIKE NETWORK

- At the north end – around G Street
 - Solutions are still being studied
- At the south end at Chesterfield/101
 - Two early conceptual alternatives have been developed working with the City Engineering Department

INTERSECTION CONCEPT A



- 1 Reduce curve radius and potentially signalize right turn to allow people walking and riding bikes a protected crossing
- 2 Expand refuge island to accommodate people walking and riding bikes as they wait to cross
- 3 Expand sidewalk to 12' pathway and add additional space at corner for people walking and riding bikes as they wait to cross
- 4 Widen crossing and add bicycle crossing treatment
- 5 Add through bike lane next to refuge island. Provide guidance for people riding bikes to connect to Coastal Rail Trail
- 6 Add buffer to bike lane by narrowing travel/turn lanes

Provide wayfinding at decisions points to help people navigate to/from Coastal Rail Trail

CHESTERFIELD/101 INTERSECTION CONCEPT B



- 1 Eliminate right turn slip lane
- 2 Extend curb and reduce curve radius to create additional space at corner for people walking and riding bikes as they wait to cross; widen sidewalk to minimum 12'
- 3 Add right turn lane at intersection by moving curb line north or modifying median divider
- 4 Widen crossing and add bicycle crossing treatment
- 5 Add through bike lane next to curb extension; provide guidance for bicyclists turning onto the trail
- 6 Add buffer to bike lane by narrowing travel/turn lanes
- 7 Extend buffered bike lane treatment north of intersection
- 8 Relocate bus stop to north closer to intersection

Provide wayfinding at decision points to help people navigate to/from Coastal Rail Trail

WHAT WE'D LIKE TO LEARN

The comment cards ask:

- What east-west streets are most important to connect to?
- Paved path only, or a natural surface path on the side?
- Closer to the tracks or closer to the street?
- How wide?

WHAT WE'D LIKE TO LEARN

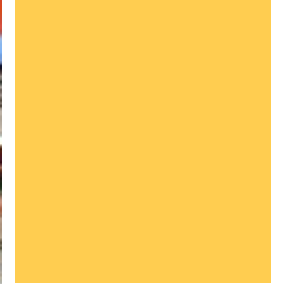
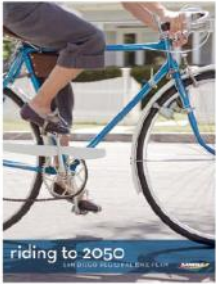
- Straight or meandering?
- Flat or undulating?
- Lighting: Lit or unlit?
- And other comments

PROJECT INTENTIONS – RECAP of KEY ITEMS

- To make an enjoyable place for people of all ages and abilities to ride bikes, walk and run
- To connect neighborhoods
- To create safe routes to school and transit
- To maintain the scenic quality of the coast
- To improve public health and quality of life
- To provide transportation choices

NEXT STEPS

- Take feedback from tonight and other input received (call me, email me, write me a letter) to develop a preferred conceptual design alternative
- Hold a third community meeting to show the design and see how closely it reflects the citizens' vision and get feedback how to refine the design
- Hold a fourth community meeting or proceed with preliminary engineering and environmental, depending on level of refinement needed



COASTAL RAIL TRAIL

ENCINITAS – CHESTERFIELD TO E STREET PROJECT

CONTACT: CHRIS CARTERETTE, AICP
PROJECT MANAGER
Chris.Carterette@sandag.org
Direct: 619.699.7319

