

COASTAL RAIL TRAIL

ENCINITAS – CHESTERFIELD TO E STREET PROJECT

COMMUNITY OPEN HOUSE

NOVEMBER 14, 2013

WELCOME

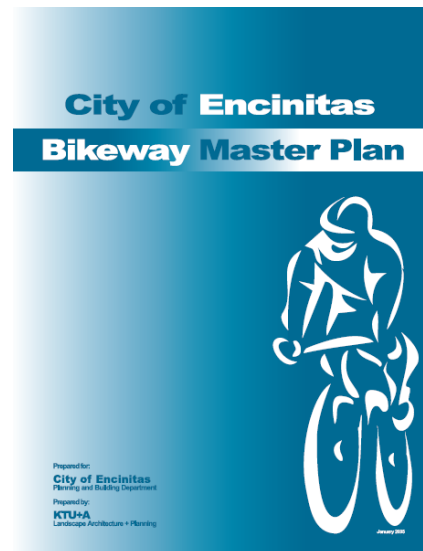
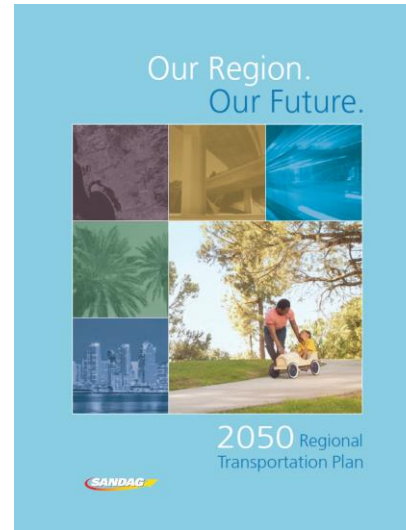
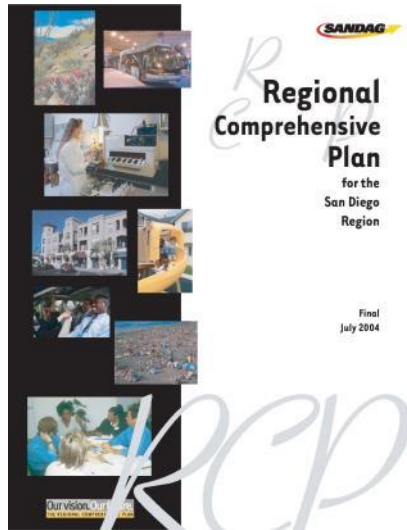
- Project Introduction
- Active Transportation Overview
- Encinitas Coastal Rail Trail Project Details

BEFORE WE GET STARTED

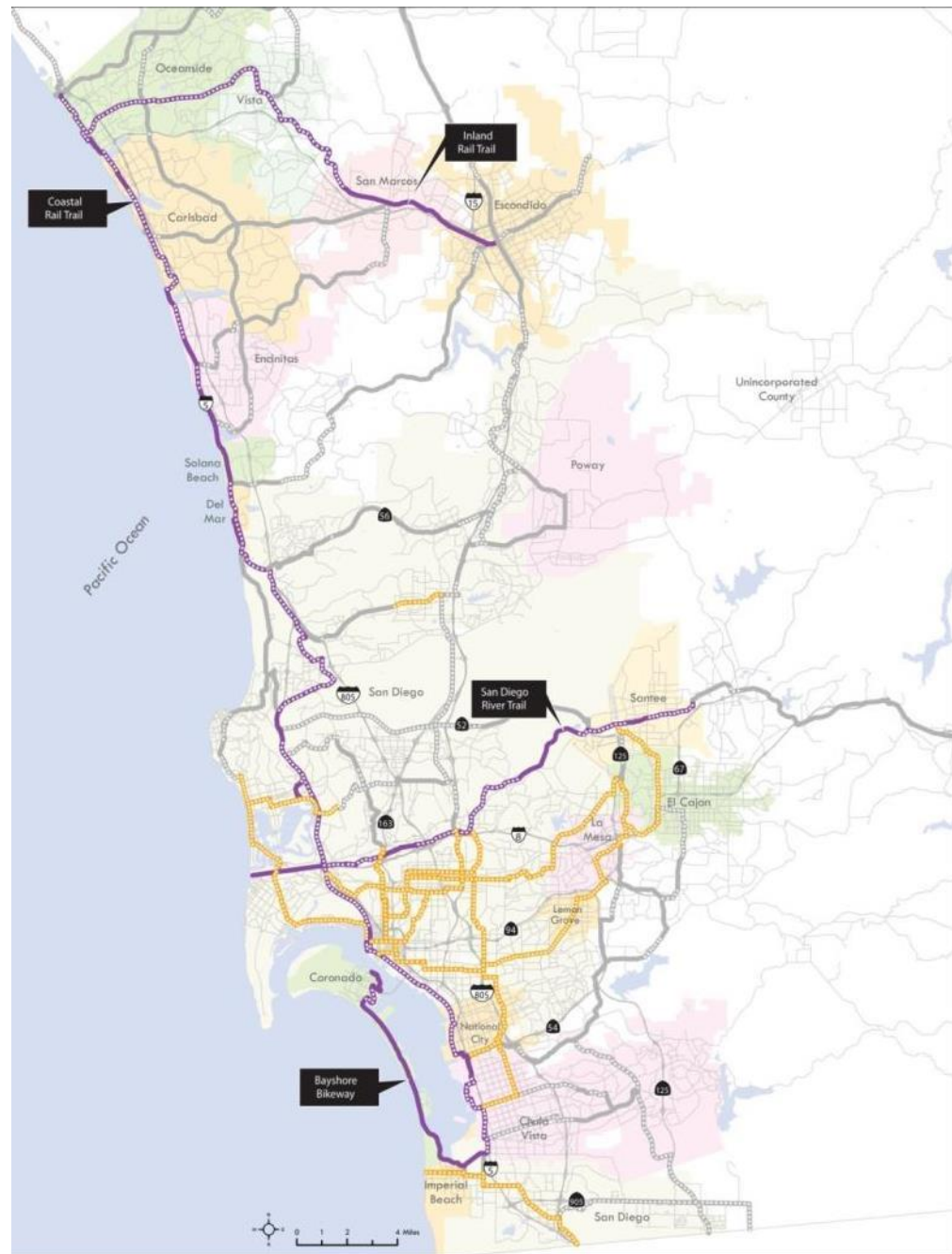
- ✓ Please sign in and provide contact information so we can include you in future activities
- ✓ Please fill out comment cards
- ✓ Please feel free to write on posters and maps, or use sticky notes
- ✓ Have a snack

Thank you for being here!

REGIONAL PLANNING BACKGROUND & COORDINATION



PRIORITY PROJECTS



EVERYDAY PEOPLE, EVERYDAY TRIPS

No Way

**Interested,
but Concerned**
(potential bikeway users)

Anywhere, Anytime



ACTIVE TRANSPORTATION PRINCIPLES & BENEFITS

- Convenience and safety
- Connect neighborhoods/regions/activity centers
- Enhance neighborhood character
- Economic development
- Quality of life and public health
- Transportation choices – and more people choosing to ride

PROJECT GOALS

- To make a beautiful place for people of all ages and abilities to ride bikes, walk and run
- To connect and enhance neighborhoods
- To create a safe route to school
- To maintain the scenic quality of the coast
- To improve public health and quality of life

ALL AGES AND ABILITIES



Courtesy of Momentum Magazine

COASTAL RAIL TRAIL OVERVIEW

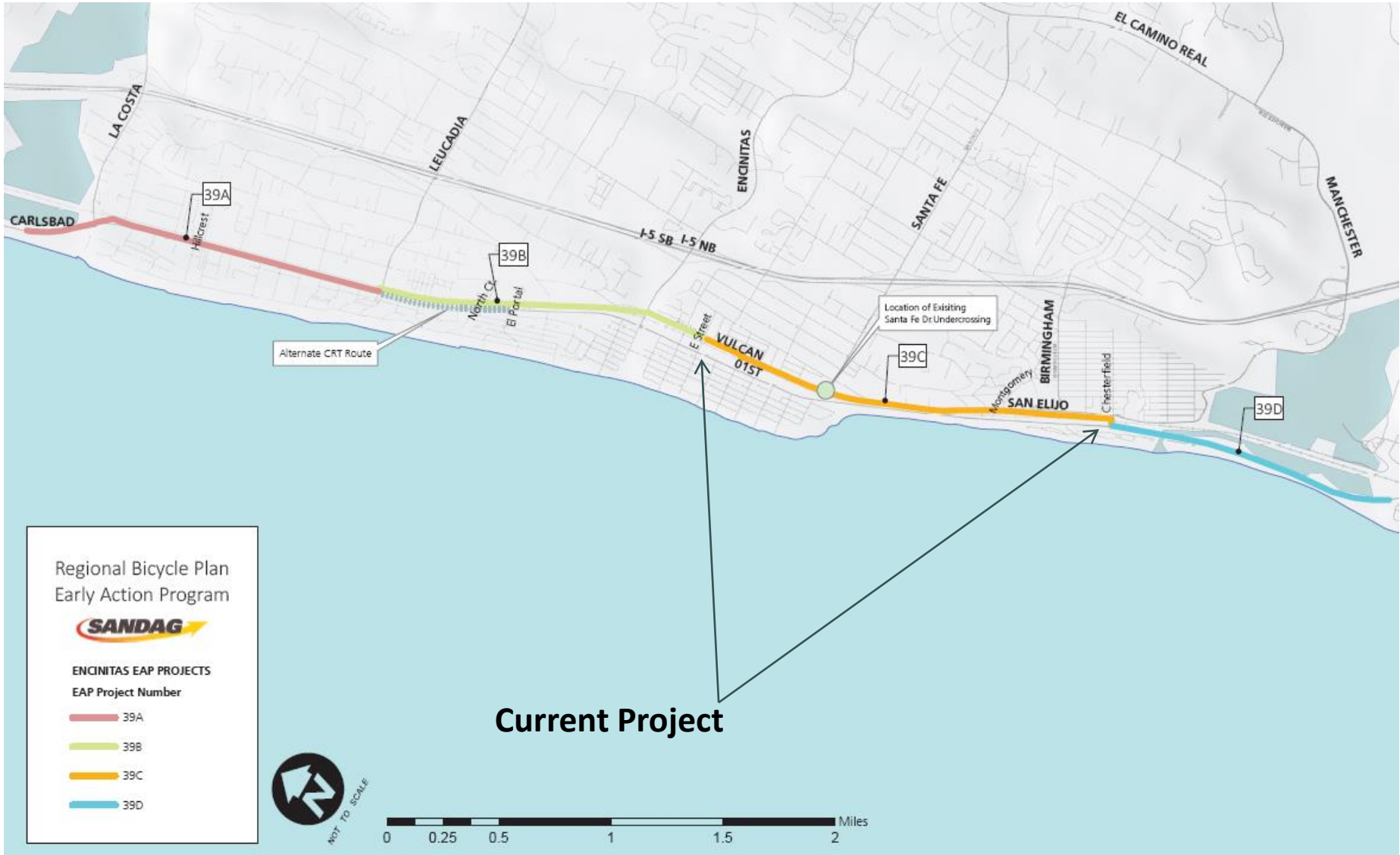


COASTAL RAIL TRAIL

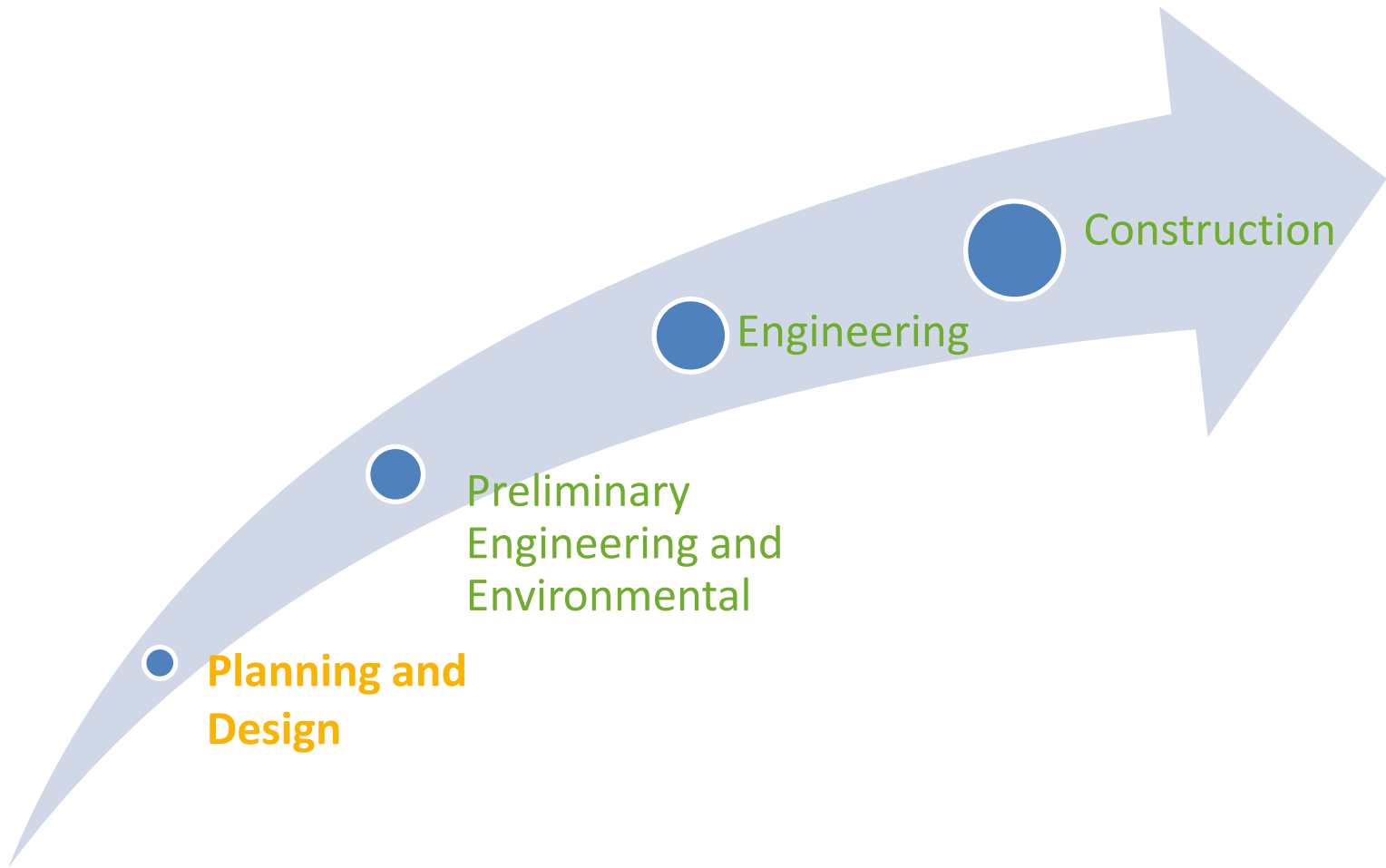
- A multijurisdictional effort completed in October 2000
- Approximately 40 mile network of bikeways from Oceanside to Santa Fe Depot in Downtown San Diego
- The Study is the guiding document for implementing the various segments
- This project is part of the Coastal Rail Trail Network



ENCINITAS COASTAL RAIL TRAIL SEGMENTS

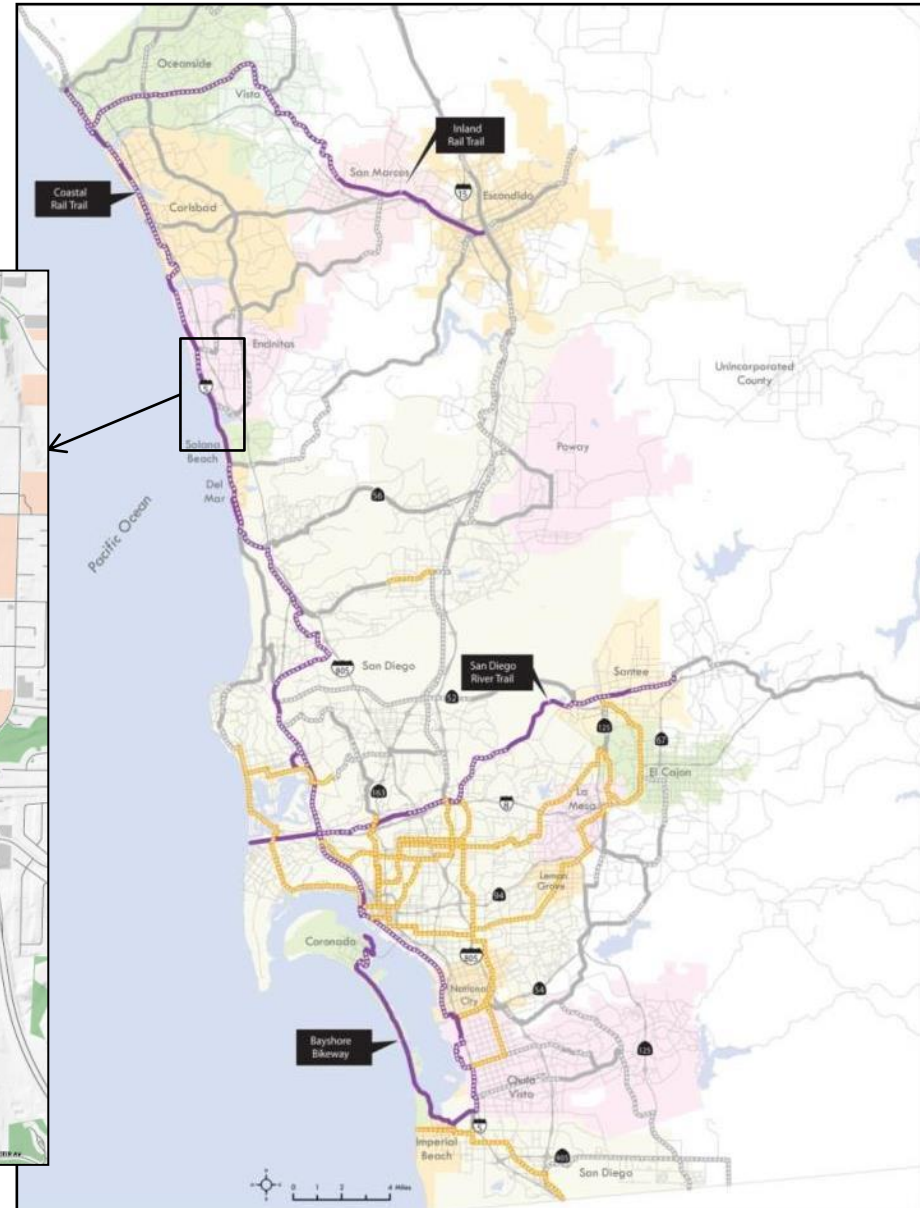


OVERALL PROJECT PHASES



PLANNING & DESIGN PHASE

Coastal Rail Trail Encinitas



PLANNING & DESIGN PROCESS

- Perform technical studies—environmental, topographic/survey, traffic operations, utilities mapping
- Community Outreach and Workshops
 - Development of Conceptual Design Alternatives
 - Refine and Analyze Conceptual Design Alternatives
 - Arrive at consensus for Conceptual Design
- Finalize Conceptual Design

CONSIDERATIONS



CONSIDERATIONS

- The path can be located within North County Transit District's Right of Way
- It should be at least 50 feet away from tracks where possible



CONSIDERATIONS

- Varied topography may influence the location of the path



CONSIDERATIONS

- Vegetation type also may influence where the best place would be for the path



CONSIDERATIONS

- The corridor hosts many uses:
 - Biking,
 - Walking,
 - Running,
 - Watching surf and sunsets,
 - Parking
 - COASTER, Amtrak and BNSF freight trains



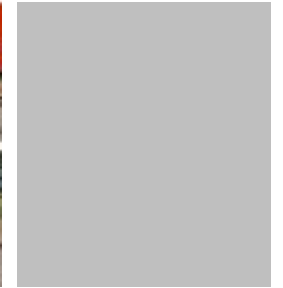
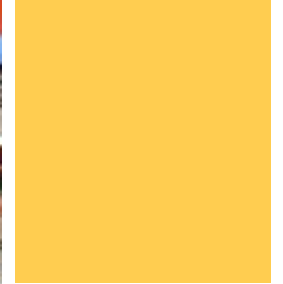
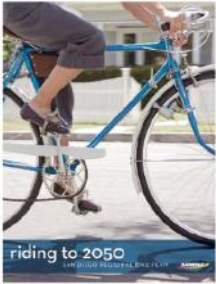
PROJECT INTENTIONS – A RECAP

- To make a beautiful place for people of all ages and abilities to ride bikes, walk and run
- To connect and enhance neighborhoods
- To create a safe route to school
- To maintain the scenic quality of the coast
- To improve public health and quality of life
- To provide transportation choices



- Mobility ● Experience ● Community
- Placemaking ● Economic Development





COASTAL RAIL TRAIL

ENCINITAS – CHESTERFIELD TO E STREET PROJECT

CONTACT: CHRIS CARTERETTE, AICP
PROJECT MANAGER
Chris.Carterette@sandag.org
Direct: 619.699.7319

