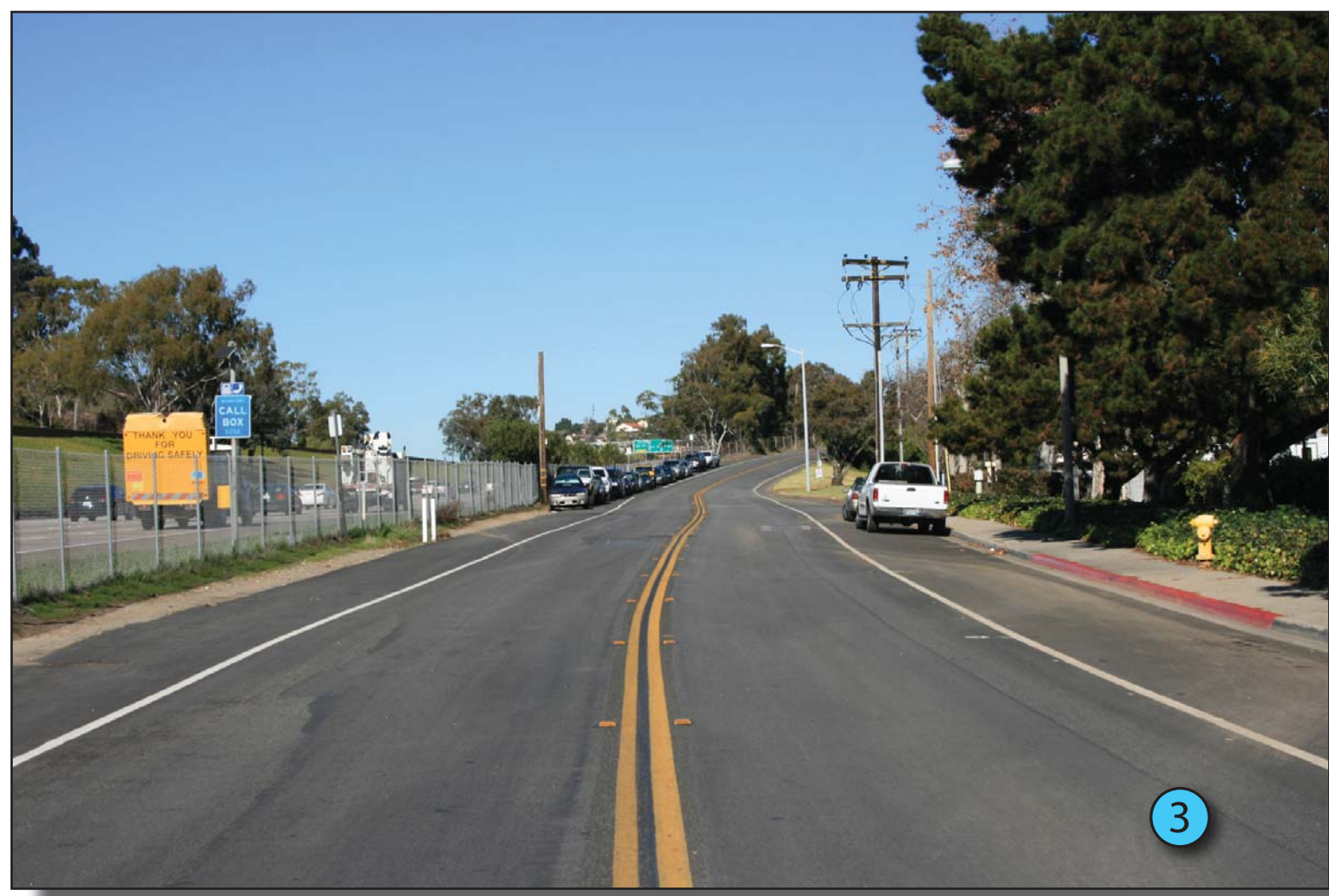


Challenges in this area Include:

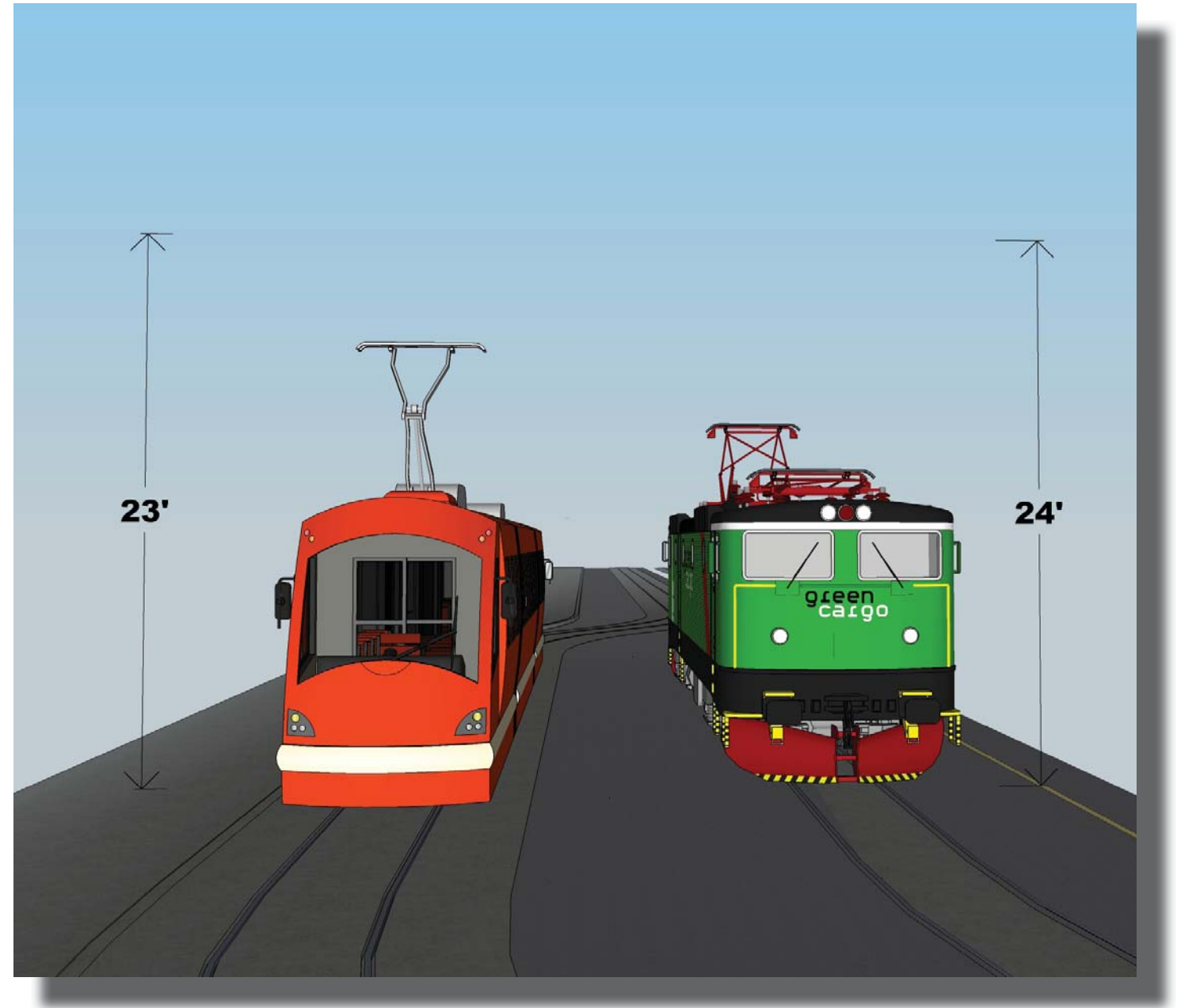
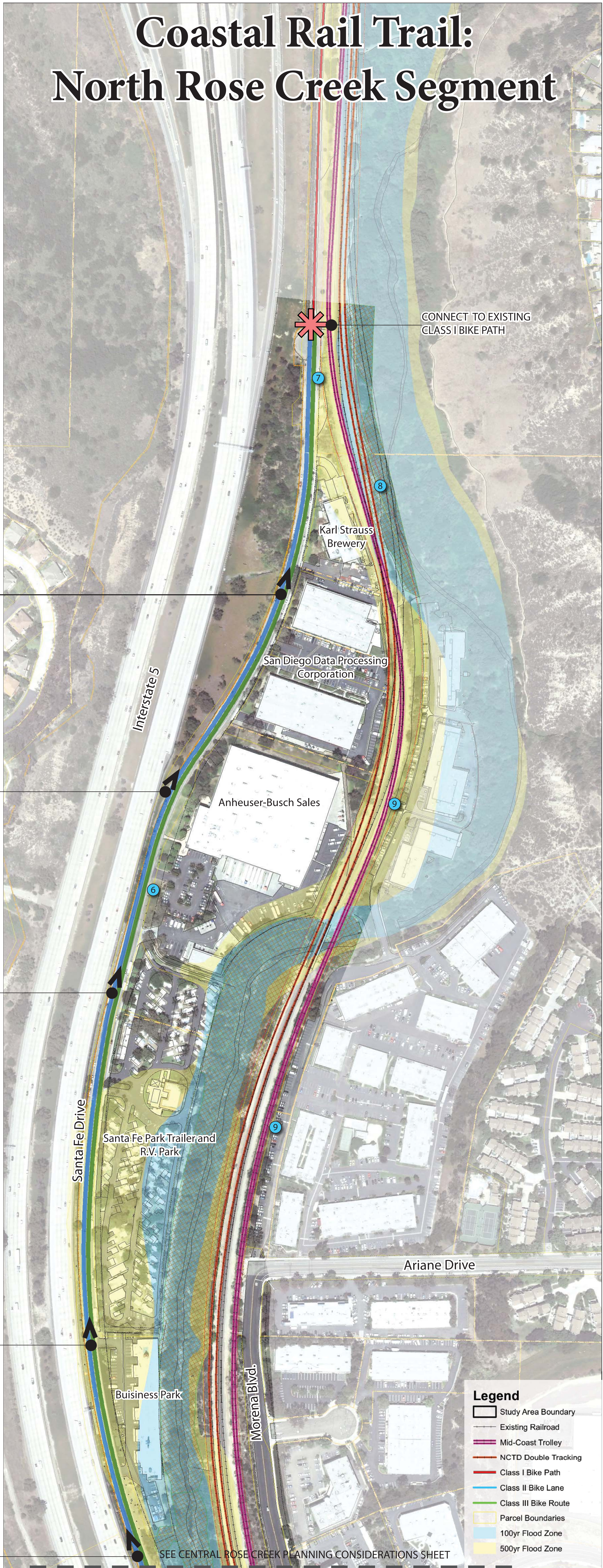
- ① Parking on west and east side of street
- ② Parking on west side of street
- ③ Parking on west and east side of street
- ④ Parking on west and east side of street
- ⑤ Parking on west side of street, sensitive biology on east
- ⑥ Driveways along the east side of Santa Fe Drive
- ⑦ Railroad and Mid-coast Trolley over-crossing
- ⑧ Right-of-Way and sensitive biology
- ⑨ Right-of-Way and businesses/private property

Initial Reasonable Cost and Minimally Constrained Routes:
(SEE BICYCLE PATH AND TRAIL TREATMENT DIAGRAM)

- SEPARATED FROM TRAVEL LANE
- NEAR TRAVEL LANE



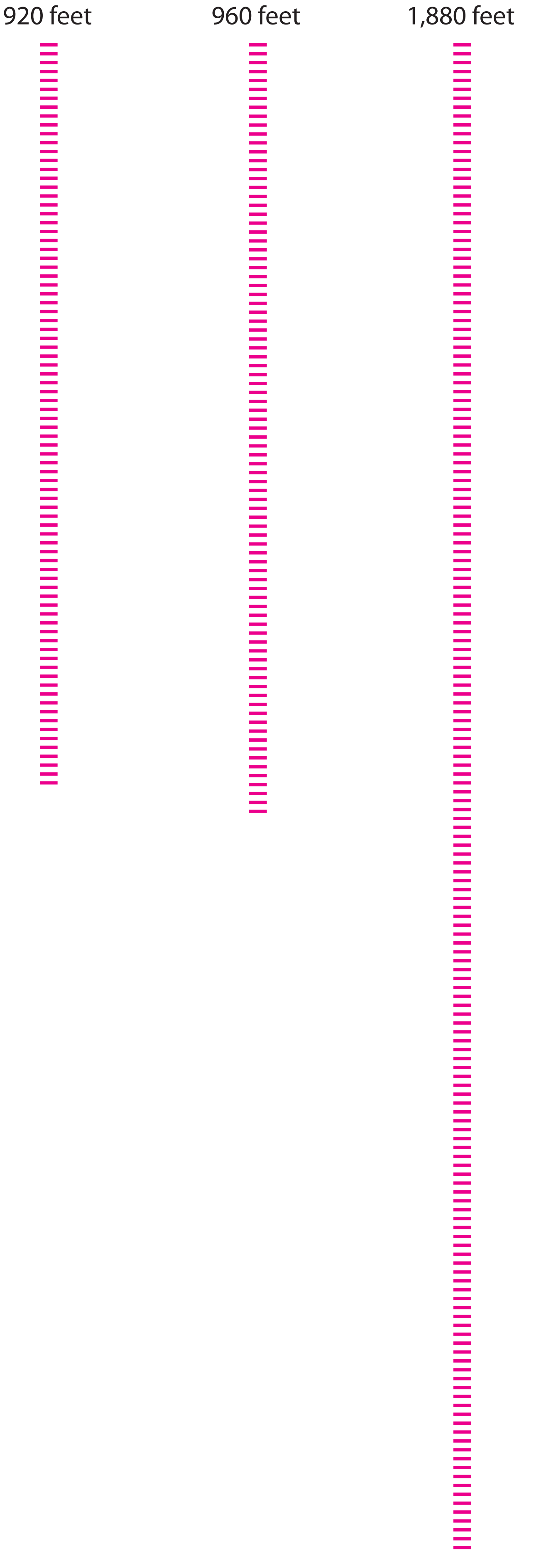
Coastal Rail Trail: North Rose Creek Segment



Minimum clearance required
LOSSAN Railroad (LOSSAN): Approximately 24'
MTS Light Rail Transit (LRT): Approximately 23'

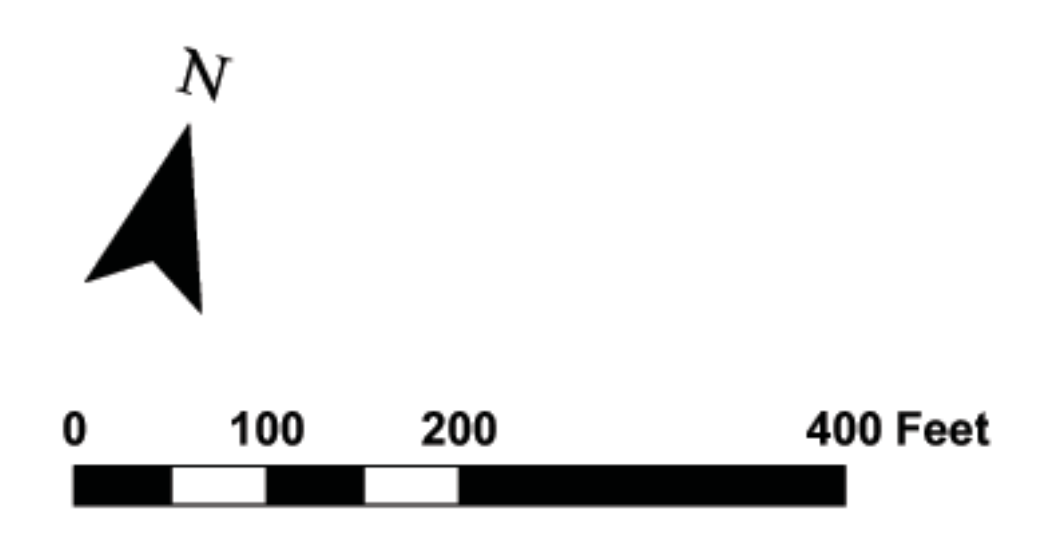
Length of non-vehicular bridge necessary to meet clearance requirements with five percent maximum path gradient under the following conditions:

Crossing over LRT: 920 feet
Crossing over LOSSAN: 960 feet
Crossing over combined LOSSAN and MTS: 1,880 feet



Legend

- Study Area Boundary
- Existing Railroad
- Mid-Coast Trolley
- NCTD Double Tracking
- Class I Bike Path
- Class II Bike Lane
- Class III Bike Route
- Parcel Boundaries
- 100yr Flood Zone
- 500yr Flood Zone



SEE CENTRAL ROSE CREEK PLANNING CONSIDERATIONS SHEET