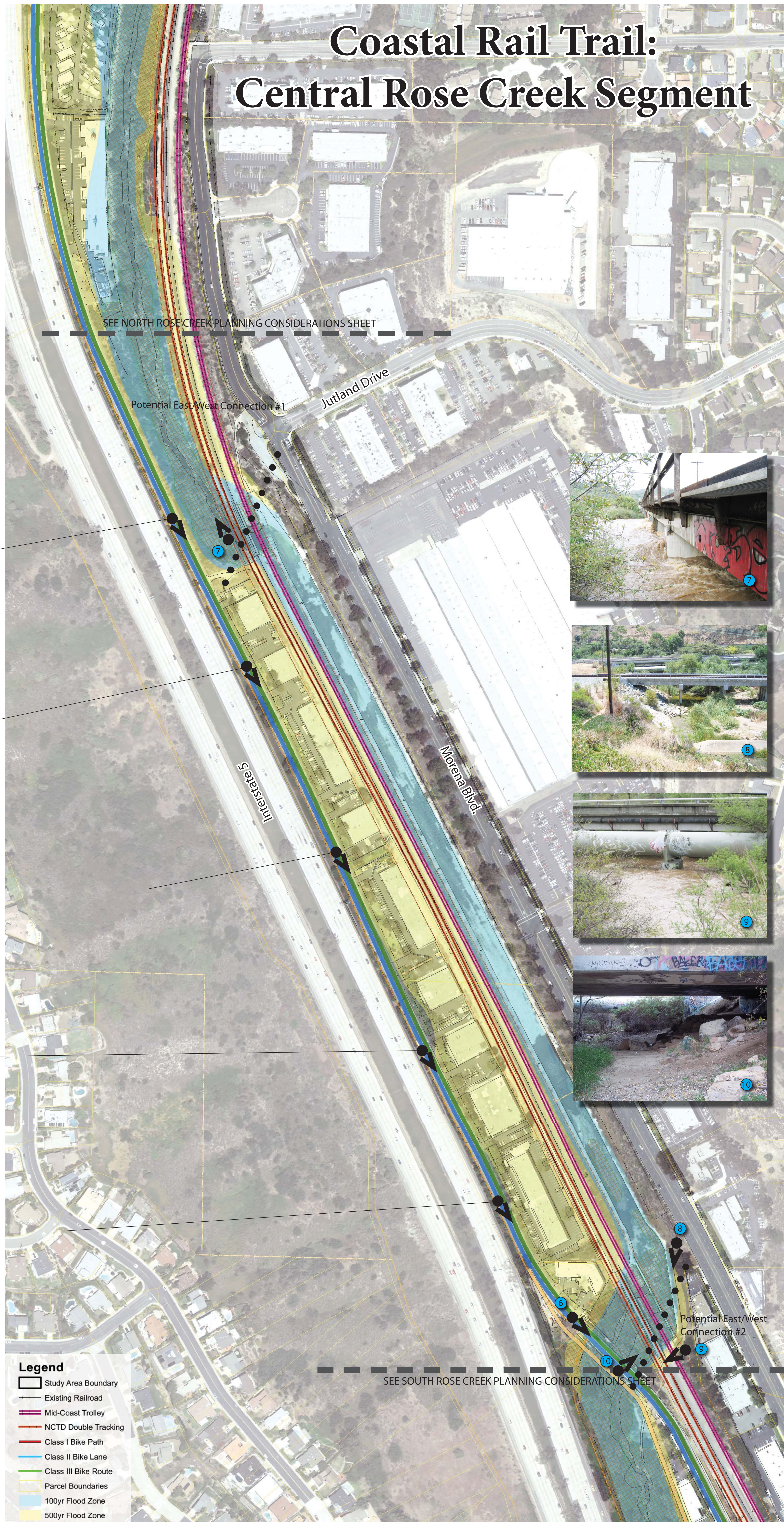


Challenges in this area Include:

- 1 Parking on west side of street, habitat and steep slopes on east side of street
- 2 Parking on west side of street, utilities and ROW improvements
- 3 Parking on west side of street, utilities and ROW improvements
- 4 Parking on west side of street, utilities and ROW improvements
- 5 Parking on west side of street, utilities and ROW improvements
- 6 Parking on west side of street, utilities and ROW improvements, narrow existing bridge
- 7 High water flow during a major rain event at the railroad trestle
- 8 The railroad trestle in the foreground and Santa Fe St. bridge in the middle ground during dry conditions
- 9 High water flow during a major rain event at the Santa Fe St. bridge
- 10 Low overhead clearance under Santa Fe St. bridge and utility pipes

Initial Reasonable Cost and Minimally Constrained Routes:
(SEE BICYCLE PATH AND TRAIL TREATMENT DIAGRAM)

- SEPARATED FROM TRAVEL LANE
- NEAR TRAVEL LANE
- SEPERATED MULTI-USE TRAIL



Legend

- Study Area Boundary
- Existing Railroad
- Mid-Coast Trolley
- NCTD Double Tracking
- Class I Bike Path
- Class II Bike Lane
- Class III Bike Route
- Parcel Boundaries
- 100yr Flood Zone
- 500yr Flood Zone

N

0 100 200 400 Feet