



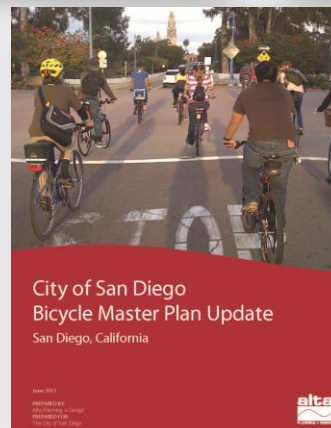
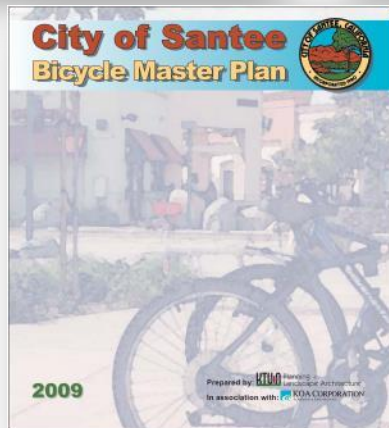
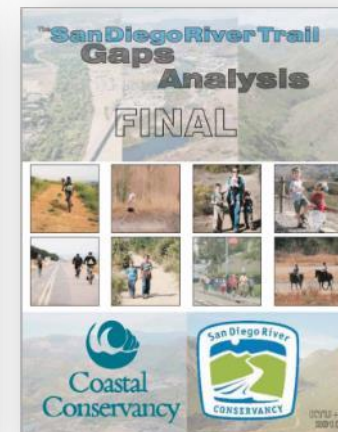
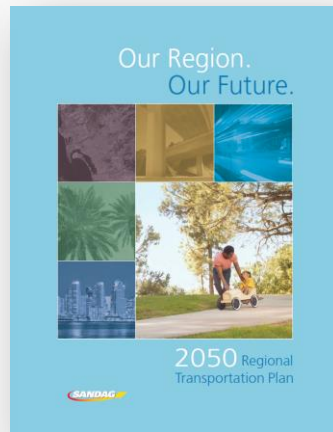
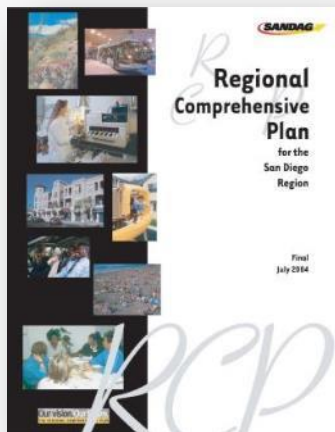
SAN DIEGO RIVER TRAIL CARLTON OAKS SEGMENT

COMMUNITY MEETING
APRIL 28, 2015



REGIONAL PLANNING

BACKGROUND AND COORDINATION





SDRT IMPLEMENTATION IN SANTEE

WALKER PRESERVE TRAIL

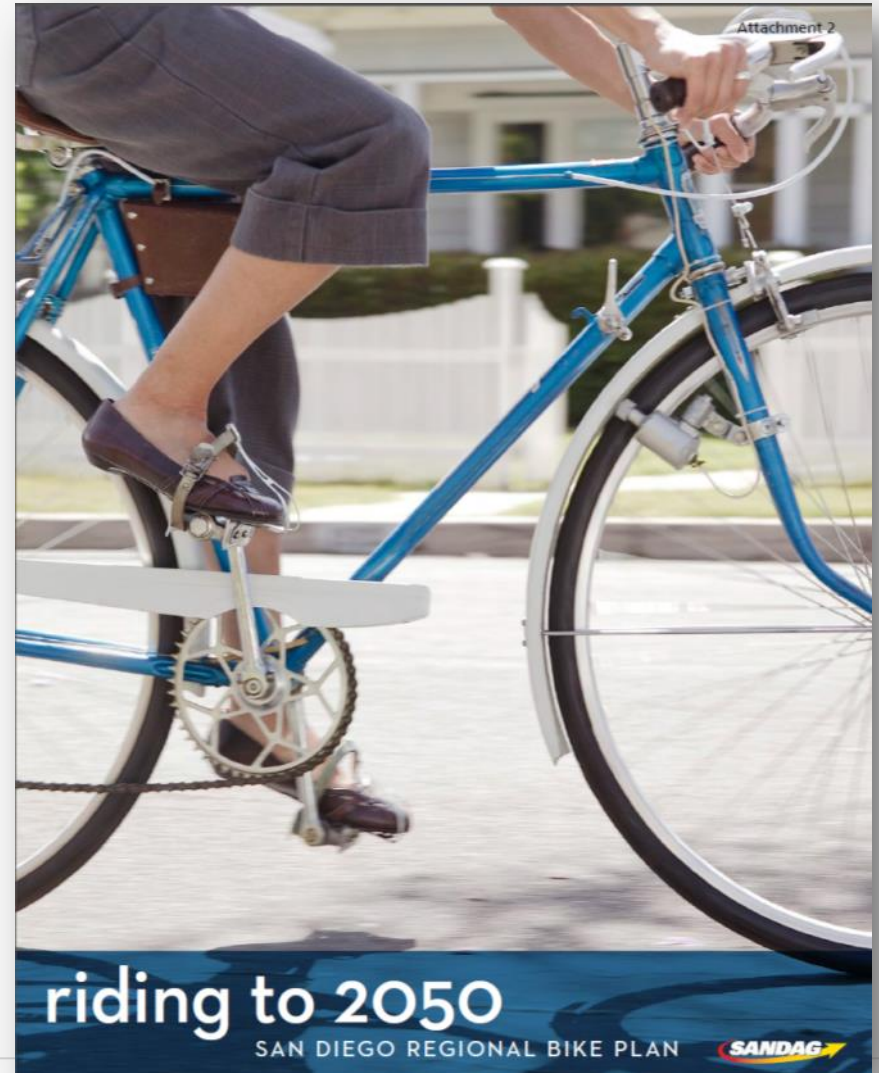




REGIONAL BIKE PLAN

EARLY ACTION PROGRAM (EAP)

- \$200 million investment in Regional Bike Network
 - 42 projects
 - 77 miles
 - 10 years





REGIONAL BIKE PLAN EARLY ACTION PROJECTS

EAP OBJECTIVES

- A connected network of regional bikeways
- Coordinated with local bikeways
- A comprehensive network of safe bikeways makes biking a more viable transportation choice





STUDY AREA



SITE CHARACTERISTICS

CONNECTION TO EXISTING SD RIVER TRAIL





SITE CHARACTERISTICS ALONG SAN DIEGO RIVER





SITE CHARACTERISTICS ALONG SAN DIEGO RIVER





SITE CHARACTERISTICS

PROXIMITY TO GOLF COURSE OPERATIONS





SITE CHARACTERISTICS

GAPS IN CONNECTIVITY



SITE CHARACTERISTICS ALONG NORTHERN GOLF COURSE PROPERTY





SITE CHARACTERISTICS

GOLF COURSE ACCESS ROADS





SITE CHARACTERISTICS

PROXIMITY TO GOLF COURSE OPERATIONS



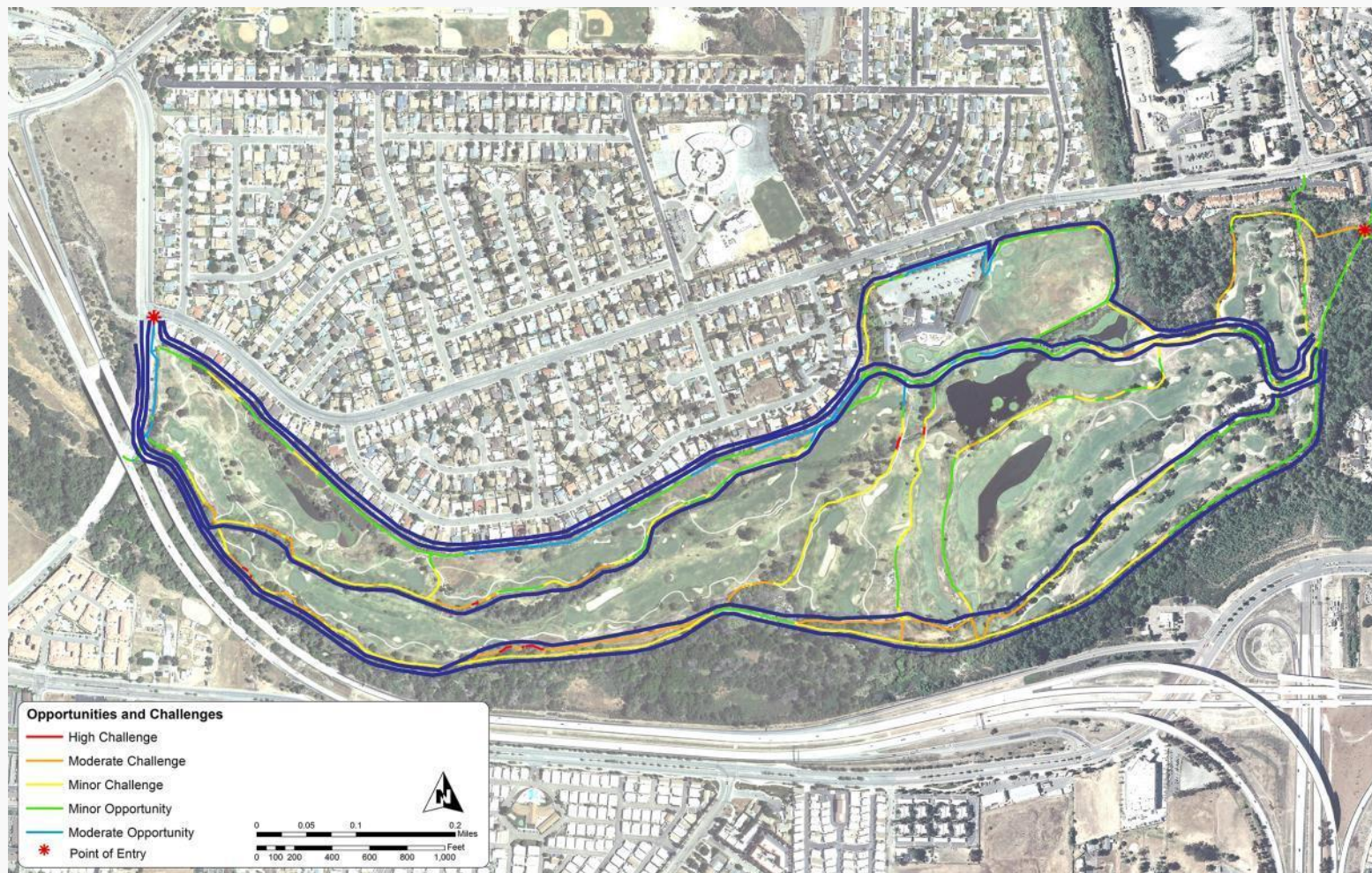


PREVIOUS PLANNING EFFORTS

- Focused on understanding the site's opportunities and challenges in an effort to select a set of viable corridors to evaluate in more detail
- Developing and refining evaluation criteria for analysis of top two corridors
- The goal is to select a preferred alignment to carry forward into preliminary engineering and environmental permitting



PREVIOUS ALIGNMENTS





NORTHERN ALIGNMENT (GOLF COURSE ALIGNMENT)





SOUTHERN ALIGNMENT (RIVER ALIGNMENT)





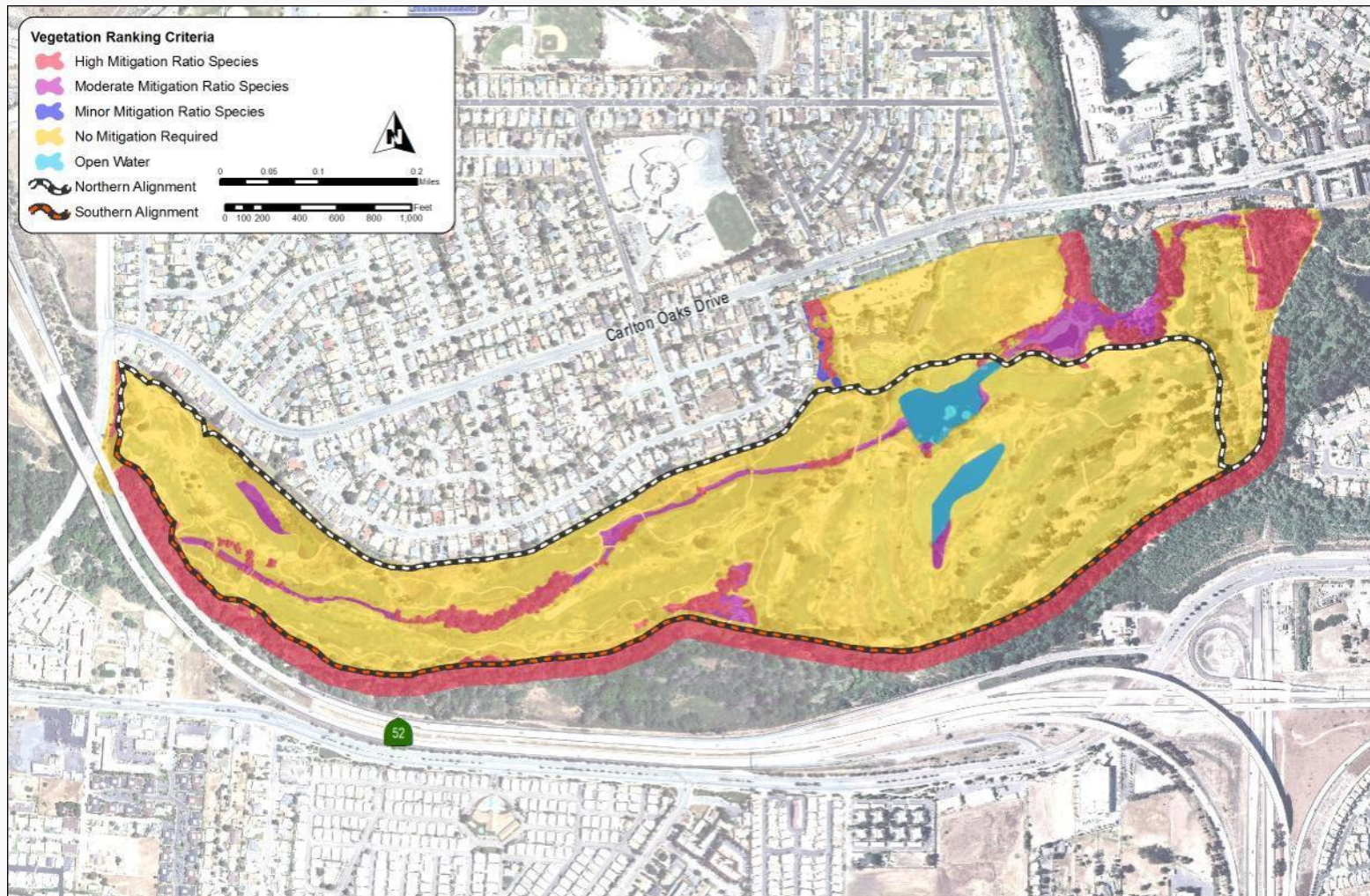
ALIGNMENT CRITERIA

BIOLOGICAL

- Permanent impacts to wetland vegetation
- Temporary impacts to wetland vegetation
- Infringement upon wetland buffers
- Within MHPA
- Infringement upon wetland buffers



VEGETATION IMPACTS



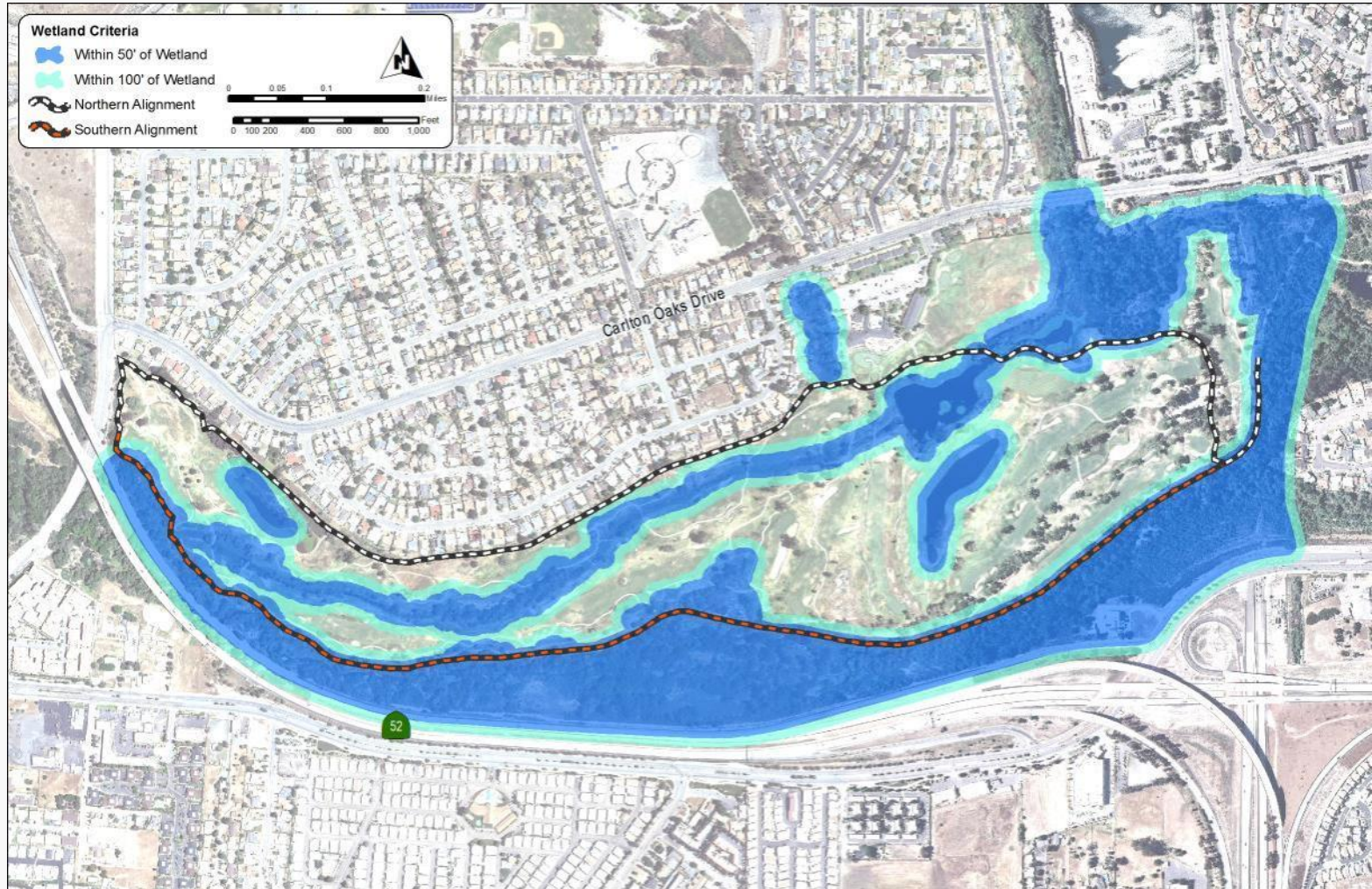


MHPA IMPACTS





WETLAND IMPACTS





SENSITIVE SPECIES





ALIGNMENT CRITERIA

HYDROLOGICAL

- Potential flood risk
- Risk of flood related erosion

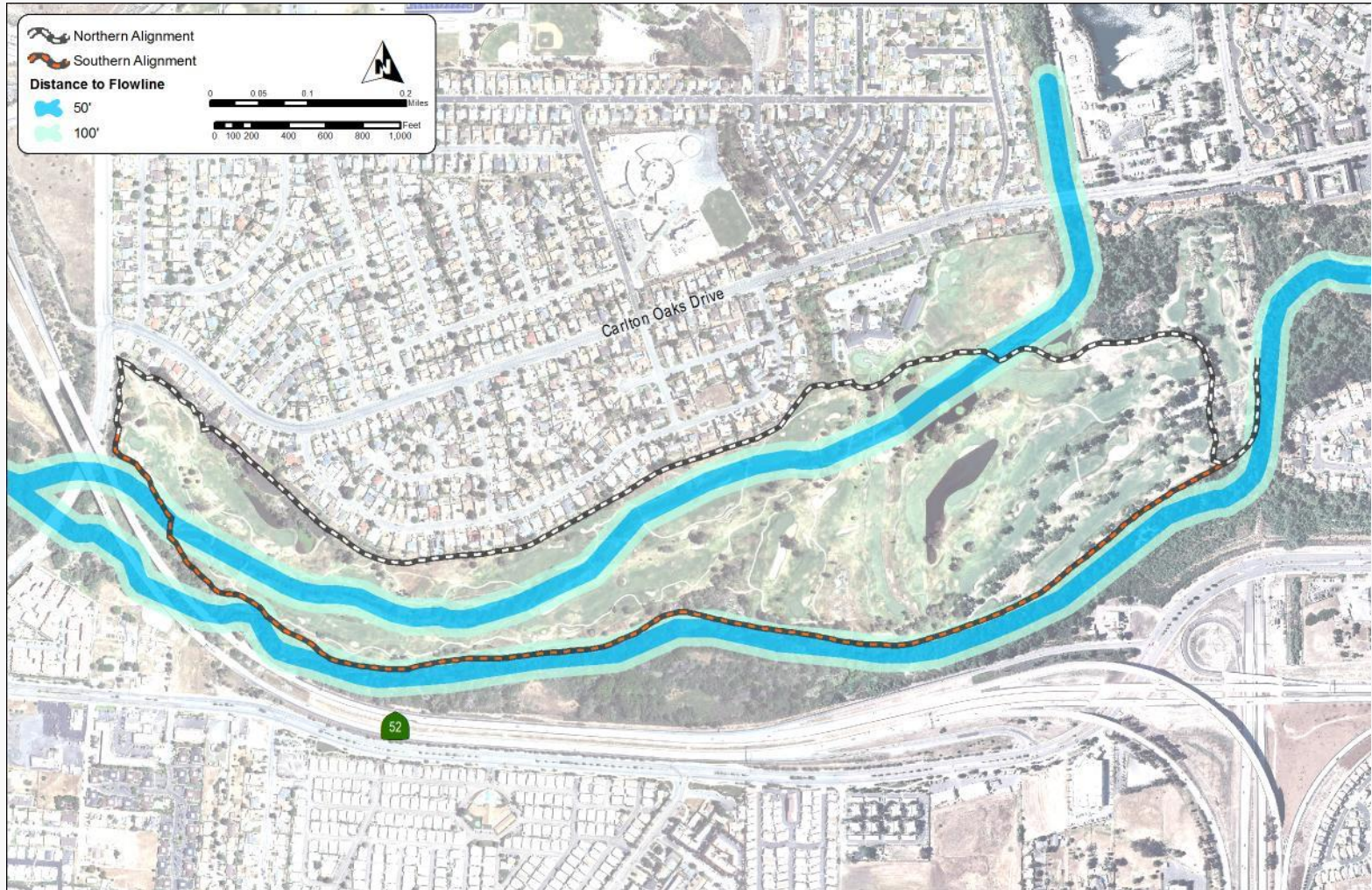


FLOOD ZONES





SOIL EROSION IMPACTS





ALIGNMENT CRITERIA

COST

- Structural features needed
- Utilizing existing paths
- Potential construction costs



ALIGNMENT CRITERIA

USER EXPERIENCE

- Encroachment on existing land uses
- User safety conflicts
- Disturbance to golf course operations



GOLF COURSE ENCROACHMENT





PROXIMITY TO GOLF COURSE OPERATIONS





UPDATED ALIGNMENT CRITERIA

Criteria	Objective	Northern Alignment	Southern Alignment
Biological	1 Permanent Impacts to Vegetation (Trail ROW)		
	2 Temporary Impacts to Vegetation (20-ft Construction Buffer)		
	3 Within MHPA		
	4 Infringement upon Wetland Buffers		
Hydrological	5 Potential Flood Risk		
	6 Risk of Flood-related Erosion		

Cost	7 Fencing Needed		
	8 Utilizing existing paths		
User Experience	9 Encroachment on Existing Land Use		
	10 User Safety Conflicts		
	11 Disturbance to Golf Course Operations		

Opportunity:
% of project with positive attributes

Challenge:
% of project with negative attributes



TRAIL CROSS SECTION CONCEPTS





TONIGHT'S MEETING FORMAT

REVIEW INFORMATION PROVIDED AT THE STATIONS

- Site photographs
- Site sections
- Alignment evaluation criteria

ASK QUESTIONS / PROVIDE COMMENTS

FILL OUT WORKSHOP COMMENT FORM

- Prioritize evaluation criteria
- Prioritize alternative corridors
- Provide additional written comments



STAY CONNECTED

PROJECT WEB PAGE

- KeepSanDiegoMoving.com/SDRiverTrail

SUBSCRIBE TO PROJECT EMAIL UPDATES

COMMENTS

- **Stephan Vance, Project Manager**
 - stephan.vance@sandag.org
 - (619) 699-1924