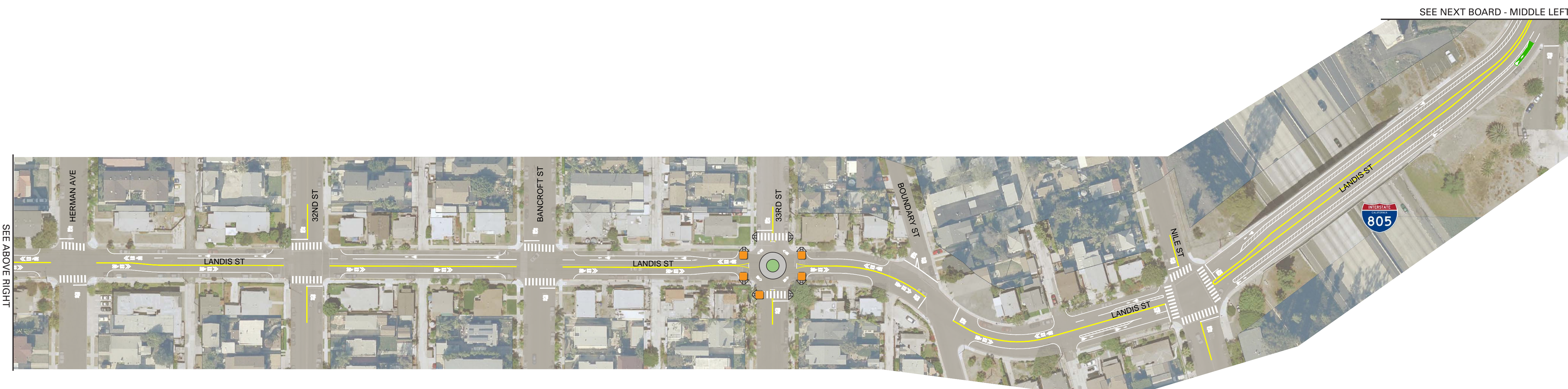


Key:

- Spaces replaced by improvements and within the 20' no parking zone recommended by California Manual on Uniform Traffic Control Devices (CA MUTCD)
- Spaces replaced by improvements beyond the 20' no parking zone recommended by CA MUTCD
- P Location identified for potential new spaces by converting existing parallel parking to angled or head-in parking on one side of the street

- Assumptions:**
1. Improvements may affect parking due to sidewalk bulbouts, truck turning movements, and/or sight distance requirements at intersections.
 2. Potential new spaces are based on conversion of parallel parking to angled or head-in parking on side streets.





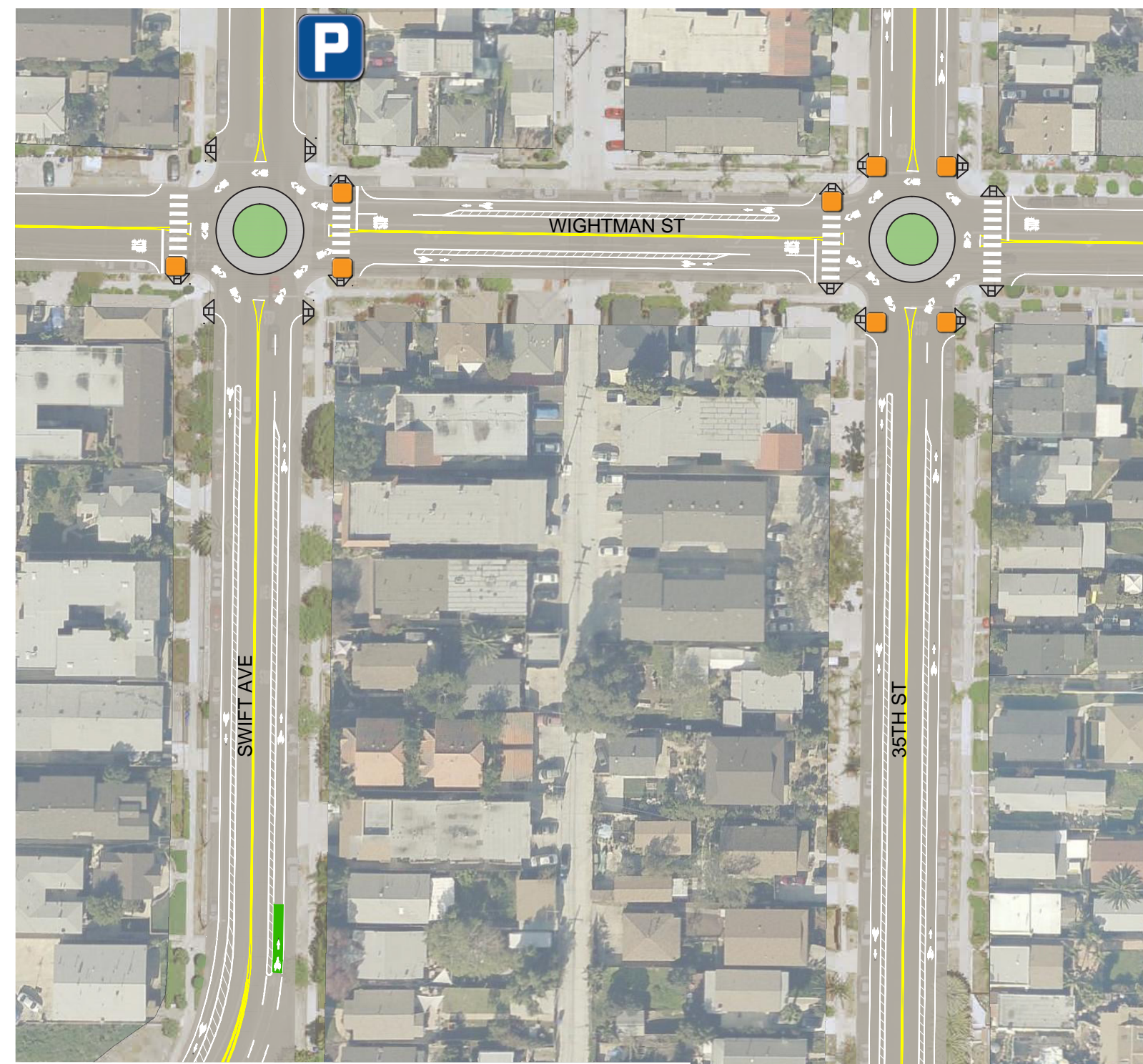
Key:

- Spaces replaced by improvements and within the 20' no parking zone recommended by California Manual on Uniform Traffic Control Devices (CA MUTCD)
- Spaces replaced by improvements beyond the 20' no parking zone recommended by CA MUTCD
- P Location identified for potential new spaces by converting existing parallel parking to angled or head-in parking on one side of the street

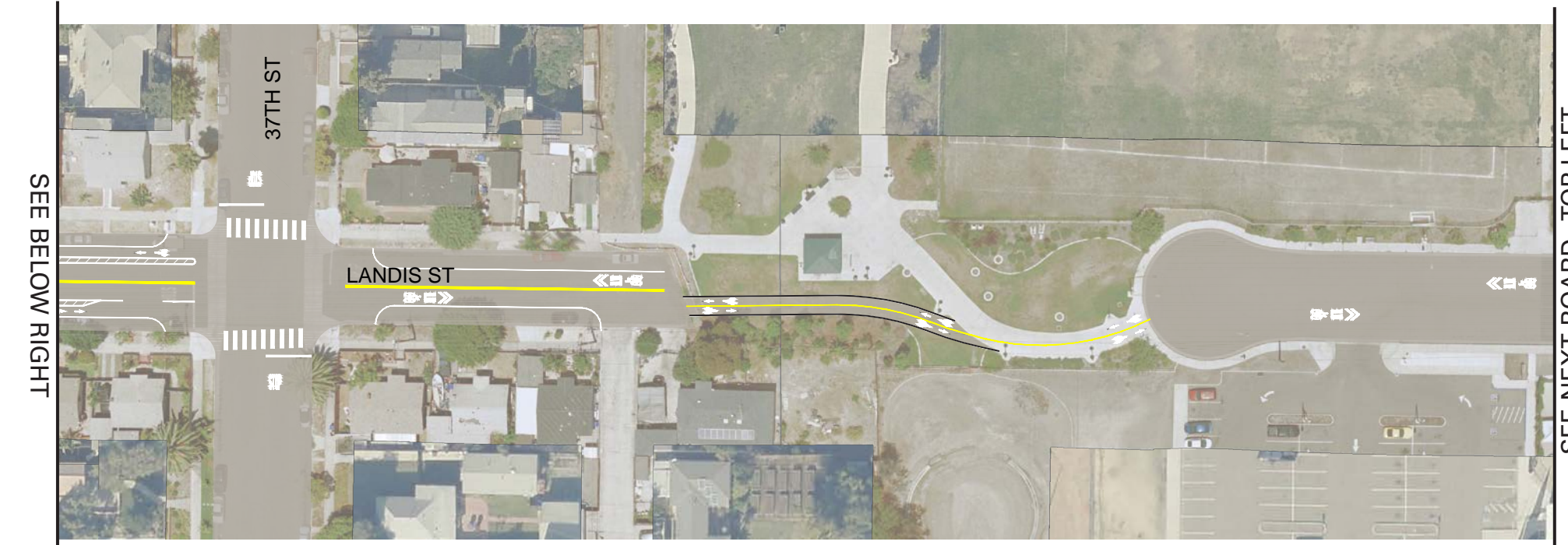
Assumptions:

1. Improvements may affect parking due to sidewalk bulbouts, truck turning movements, and/or sight distance requirements at intersections.
2. Potential new spaces are based on conversion of parallel parking to angled or head-in parking on side streets.



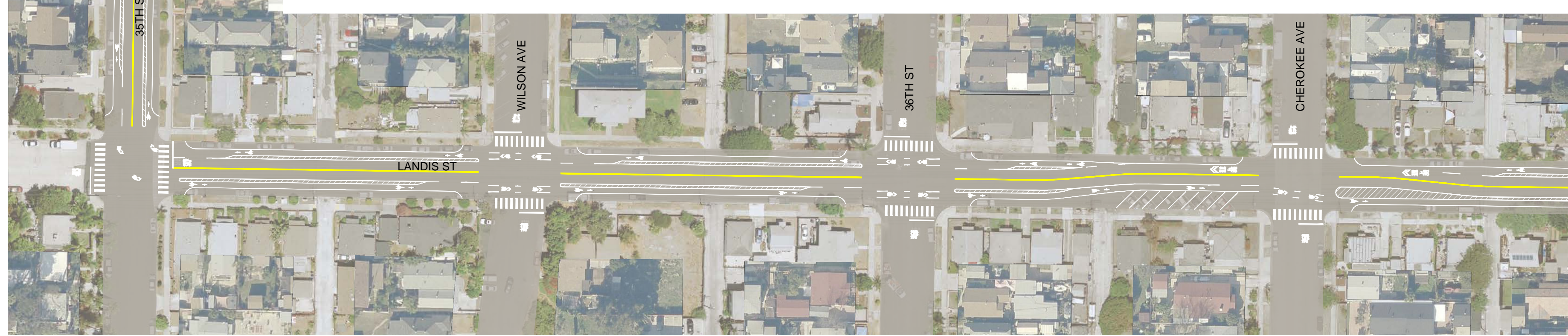


SEE PREVIOUS BOARD - MIDDLE RIGHT



SEE BELOW RIGHT

SEE NEXT BOARD - TOP LEFT



SEE ABOVE LEFT

Key:

- Spaces replaced by improvements and within the 20' no parking zone recommended by California Manual on Uniform Traffic Control Devices (CA MUTCD)
- Spaces replaced by improvements beyond the 20' no parking zone recommended by CA MUTCD
- P Location identified for potential new spaces by converting existing parallel parking to angled or head-in parking on one side of the street

Assumptions:

1. Improvements may affect parking due to sidewalk bulbouts, truck turning movements, and/or sight distance requirements at intersections.
2. Potential new spaces are based on conversion of parallel parking to angled or head-in parking on side streets.





Key:

- Spaces replaced by improvements and within the 20' no parking zone recommended by California Manual on Uniform Traffic Control Devices (CA MUTCD)
- Spaces replaced by improvements beyond the 20' no parking zone recommended by CA MUTCD
- P Location identified for potential new spaces by converting existing parallel parking to angled or head-in parking on one side of the street

Assumptions:

1. Improvements may affect parking due to sidewalk bulbouts, truck turning movements, and/or sight distance requirements at intersections.
2. Potential new spaces are based on conversion of parallel parking to angled or head-in parking on side streets.

