

Keep San Diego Moving
TransNet



Workshop Two

Community Enhancements

July 24, 2013



Project Area Map



What are Express Lanes?

- First Priority - Bus Rapid Transit (BRT)
- Second Priority - High Occupancy Vehicles (HOV), motorcycles, and permitted clean air vehicles use lanes for free
- Third Priority - Single Occupancy Vehicles (SOV) use lanes for fee with FasTrak[®] electronic toll system



Purpose of the SR-94 Express Lanes

- Manage and increase the efficiency of available person-carrying capacity on the western portion of SR-94 during peak periods, thereby maximizing its contribution to the effectiveness of the regional transportation system as envisioned in the 2050 RTP.



Purpose of the SR-94 Express Lanes

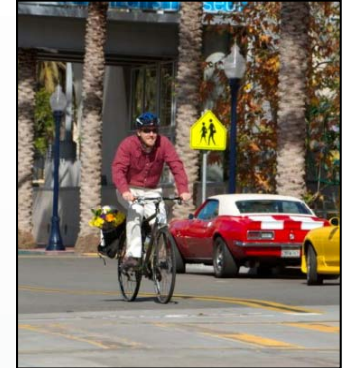
- The proposed project would provide a critical link in the regional multi-modal transportation system by accommodating the use of HOV, BRT and potential future toll SOV traffic within the project corridor, while facilitating connections with other planned regional multi-modal facilities.



2050 Regional Transportation Plan

Sustainable Communities Strategy

- Planning for a Sustainable Future
 - Provide more transportation choices through an integrated system
 - Preserve natural resources and promote smart growth
 - Maximize investments and meet funding challenges



Express Lanes – Regional Framework

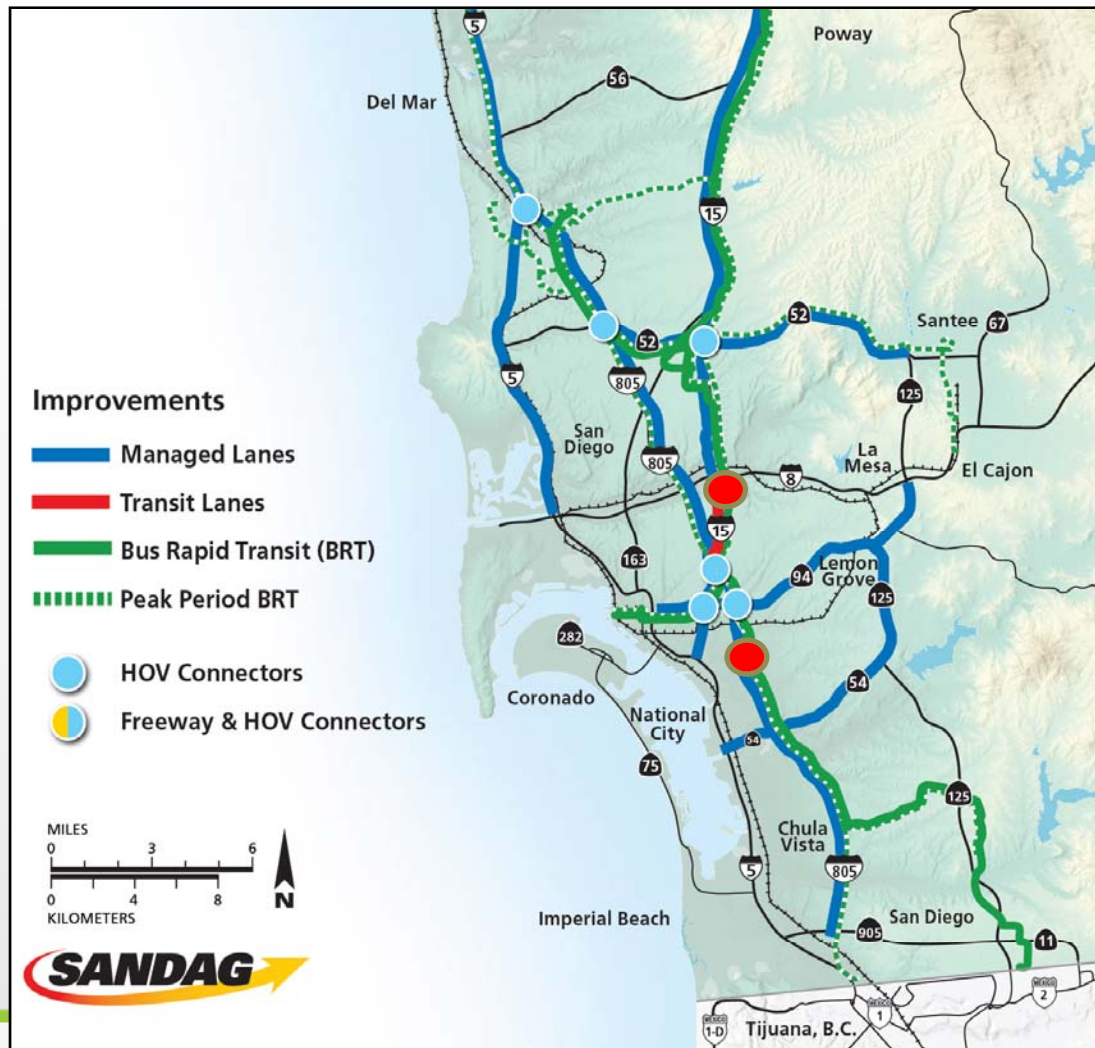
- Focus of the 2050 Regional Transportation Plan is a multi-modal strategy:
 - Provide “travel choices” – transit, ridesharing, value pricing
 - Provide competitive travel times for these “travel choices”
 - Increase freeway operating efficiency
- Express Lanes (Managed Lanes) = multi-modal facility



2050 Highway Network: Express Lanes




2050 Highway: Express Lanes/ BRT Network



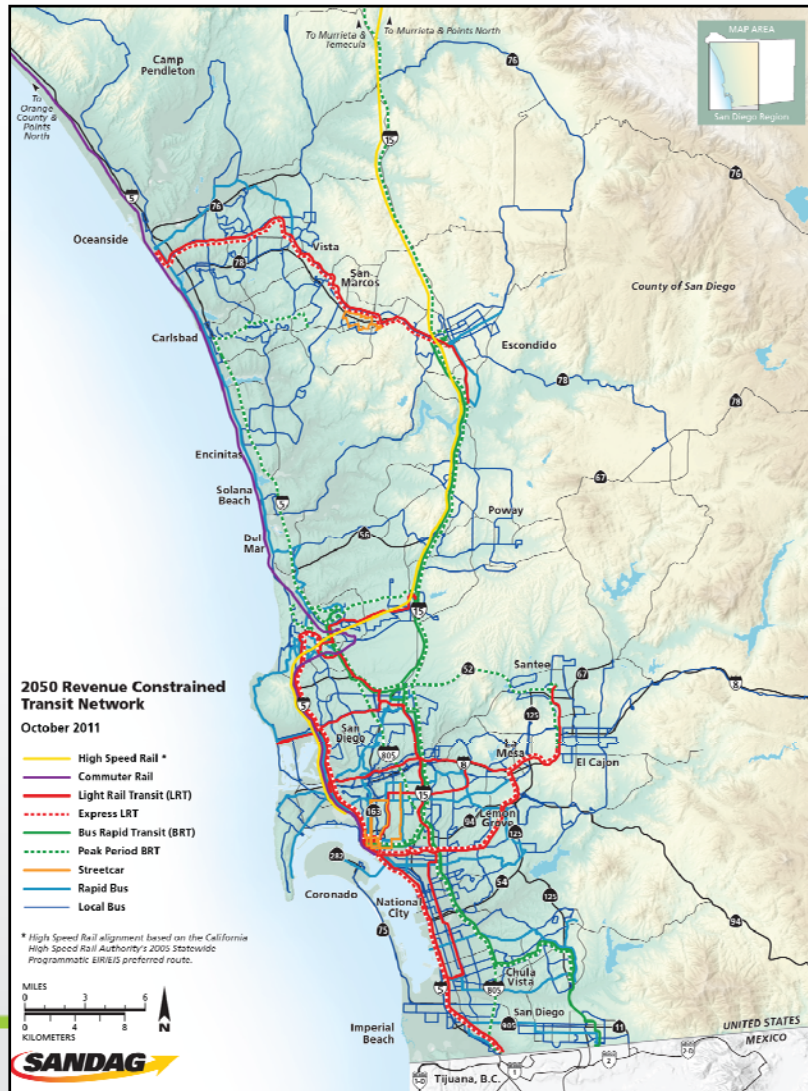
SR 94/I-805 BRT Lines:

- Escondido – Downtown via I-15/SR 94
- Otay Mesa – Downtown via I-805/SR 94
- Otay Mesa – UTC via I-805/I-15
- San Ysidro – UTC via I-805 (peak)

 BRT Transfer Stations



2050 Transit Network

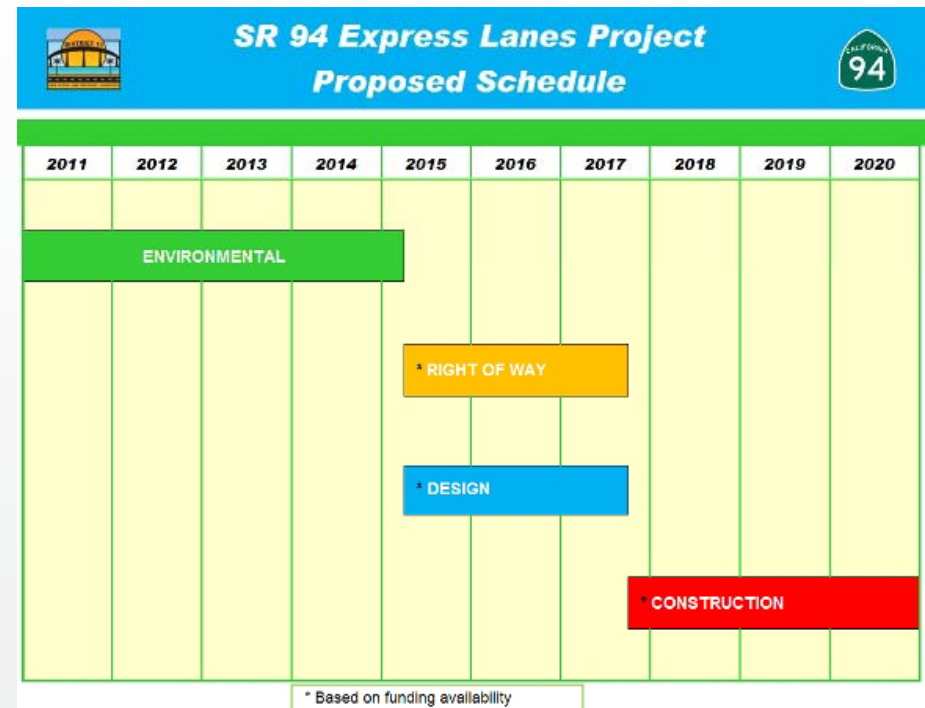


Potential Transit Modes for each Corridor

- Land use density.
- Existing and potential transit supportive land uses around stations.
- Capital and operating costs
- Potential ridership

Project Schedule

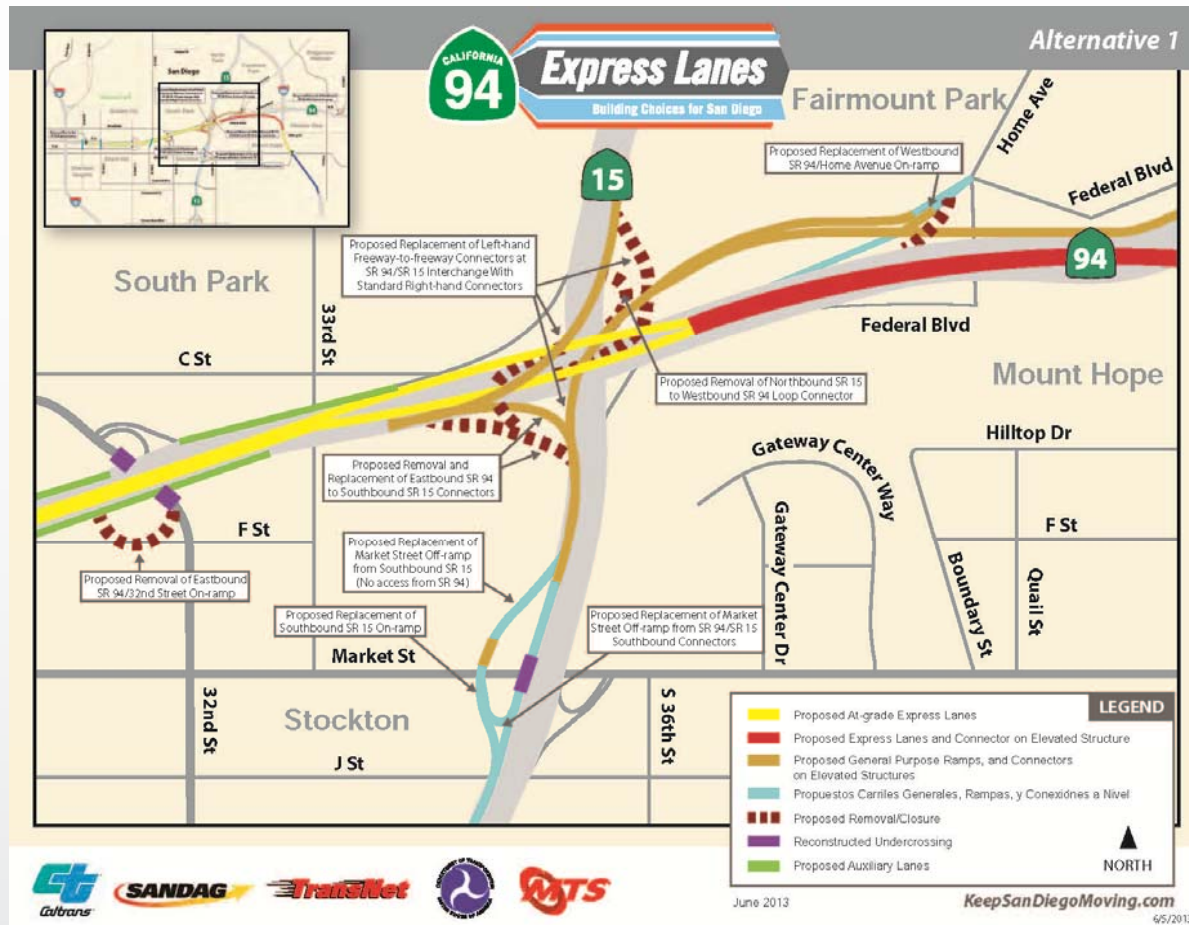
- Environmental – 2015
- Design – 2017
- Construction – 2020



Alternative 1 Map



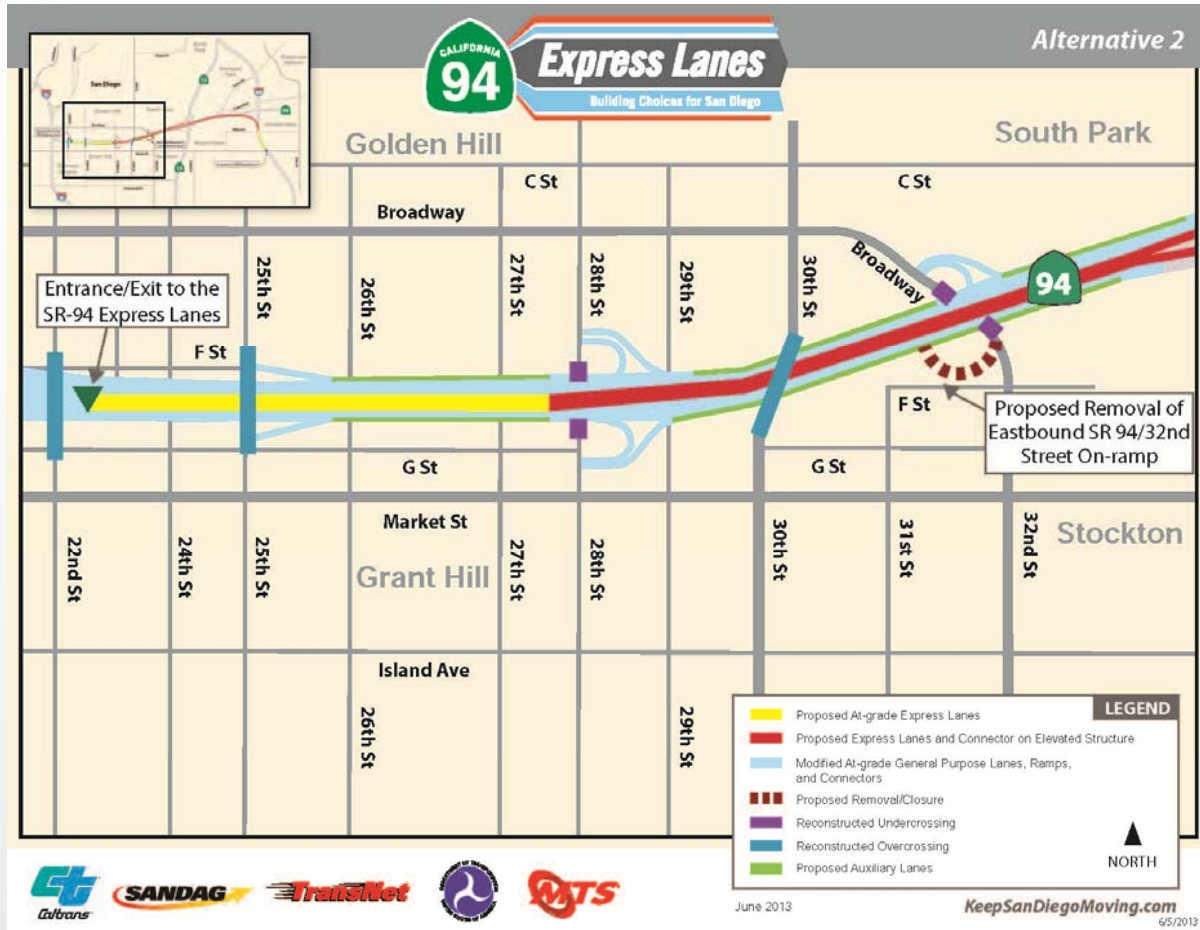
Map Detail



Alternative 2 Map



Map Detail



Community Concerns

- Traffic (Freeway and Local Streets)
- Right of Way Impacts
- Noise
- Air Quality
- Pedestrian and Bicycle Access
- Construction Impacts
- Cost
- Enhancements

Project Information

10 Minute Q&A



Public Workshop

Community Enhancement Opportunities



Community Enhancements

- **Community Enhancements** - Project improvements above and beyond what is required for mitigation.
- **Mitigation** – Actions or project design features that reduce environmental impacts by avoiding or minimizing adverse effects or compensating for adverse effects.

What Can Enhancements Do?

- Restore or enhance connectivity
- Improve bicycle or pedestrian circulation
- Enhance transit opportunities
- Add park or open space areas
- Improve urban design in project corridor
- Improve environmental quality

Community Enhancement Opportunities

- Freeway Decks or “Lids”
- Park or Open Space Acquisitions
- Bicycle/Pedestrian Circulation
- Streetscape Improvements
- New or Missing from List?

Synergy Projects – Community Enhancement opportunities that fulfill more than one goal or create opportunity for collaborations

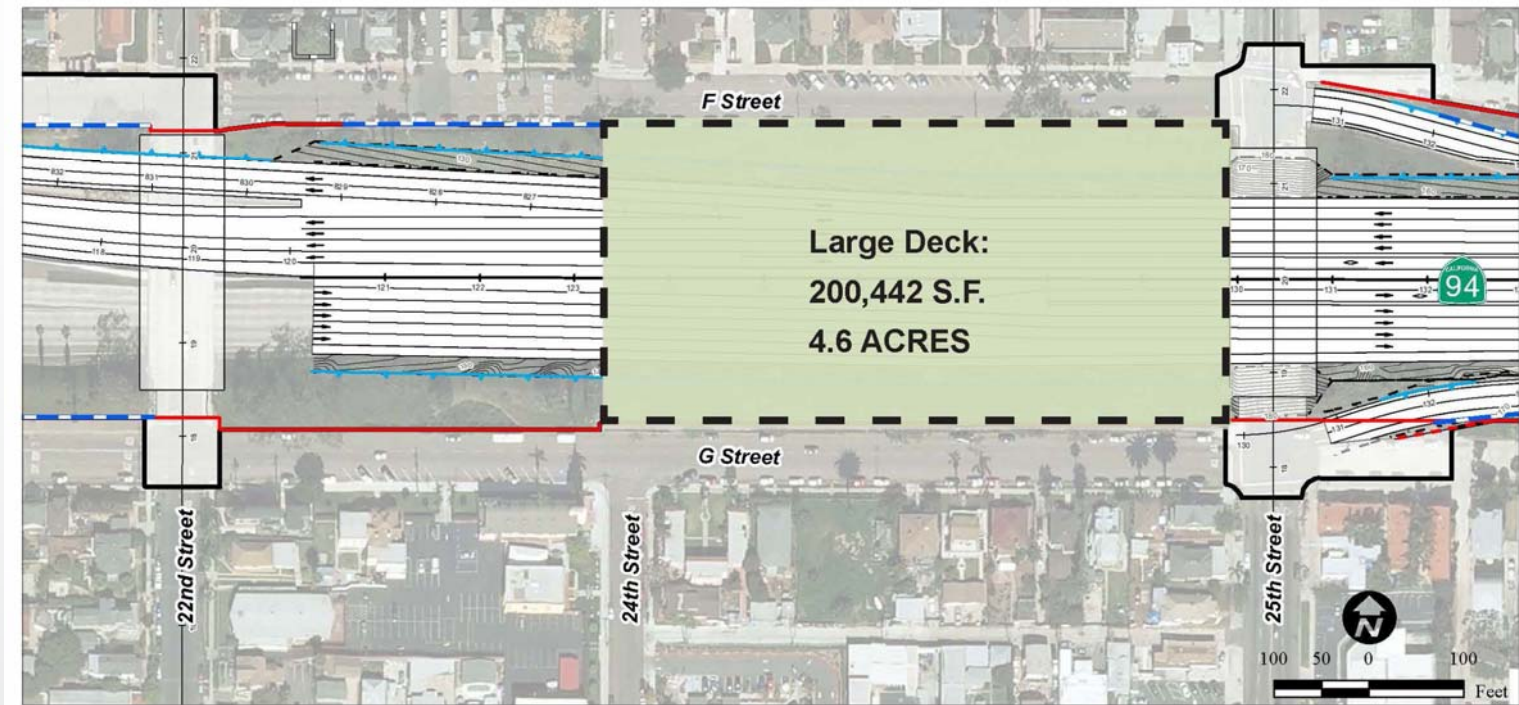
Freeway Decks/Lids

Super Deck: 22nd Street to 25th Street



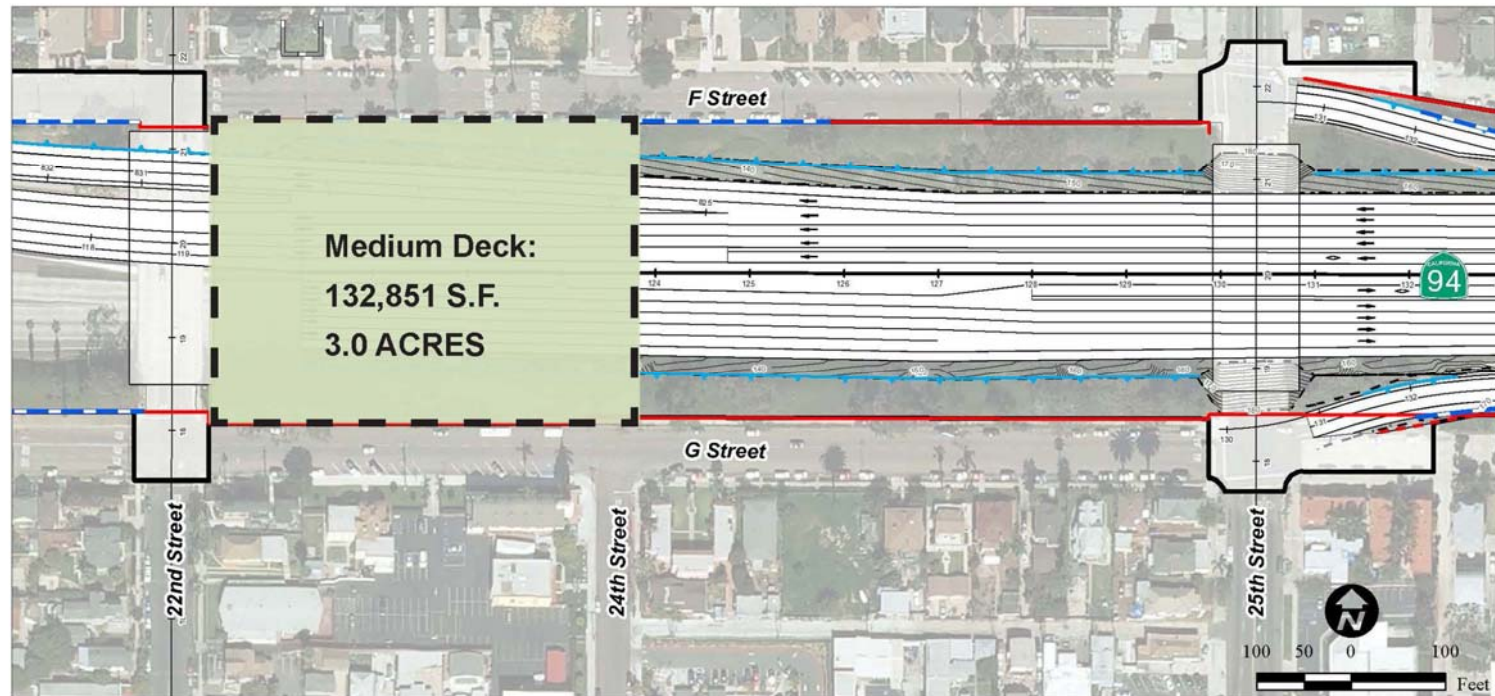
Freeway Decks/Lids

Large Deck: 24th Street to 25th Street



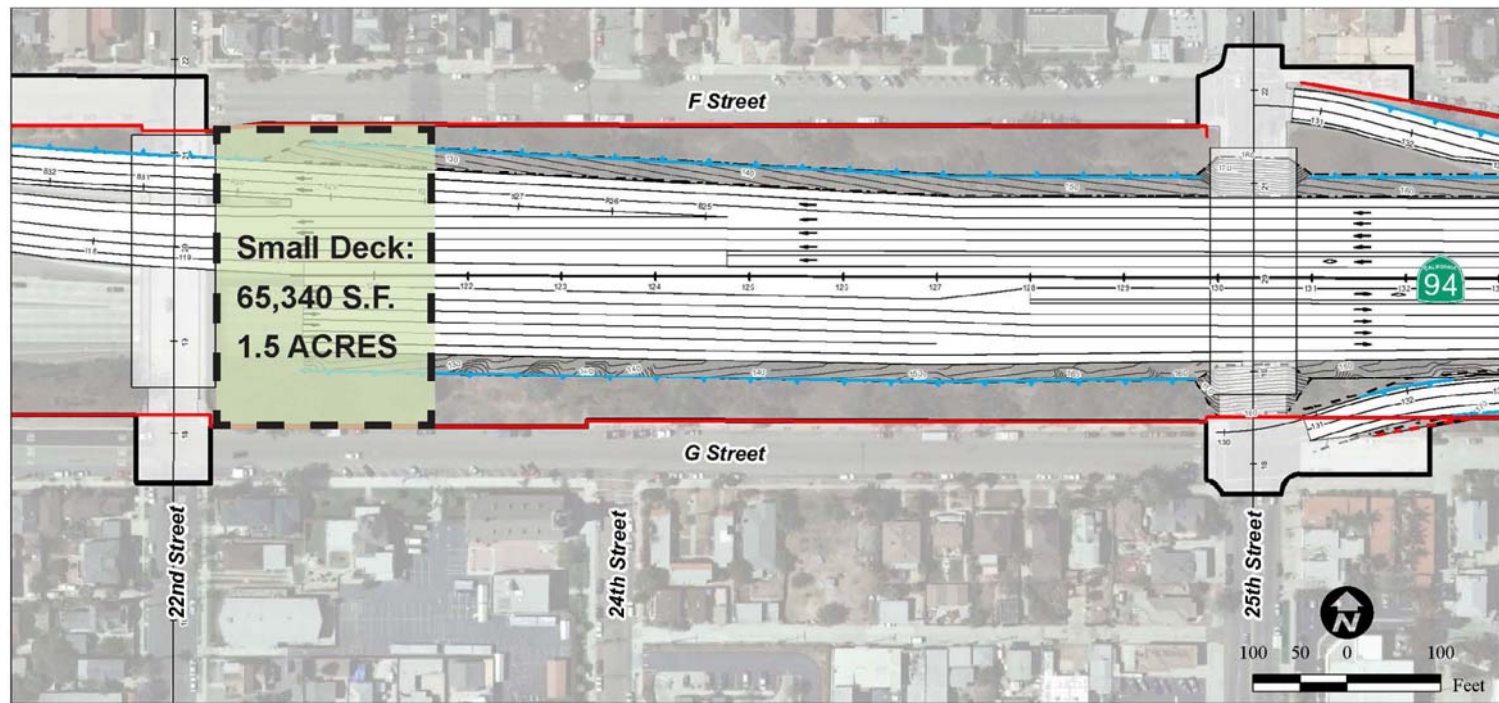
Freeway Decks/Lids

Medium Deck: 22nd Street to 24th Street



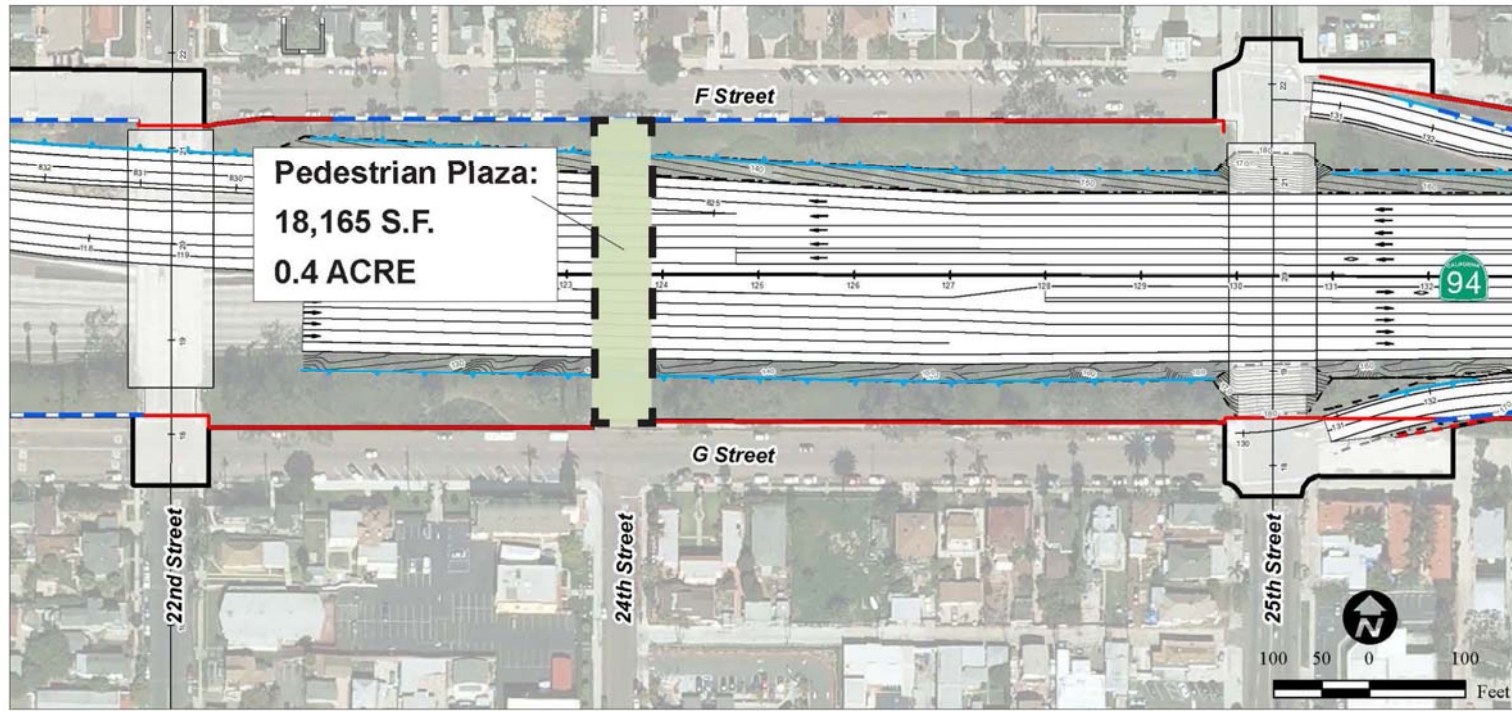
Freeway Decks/Lids

Small Deck: 22nd Street to 23rd Street

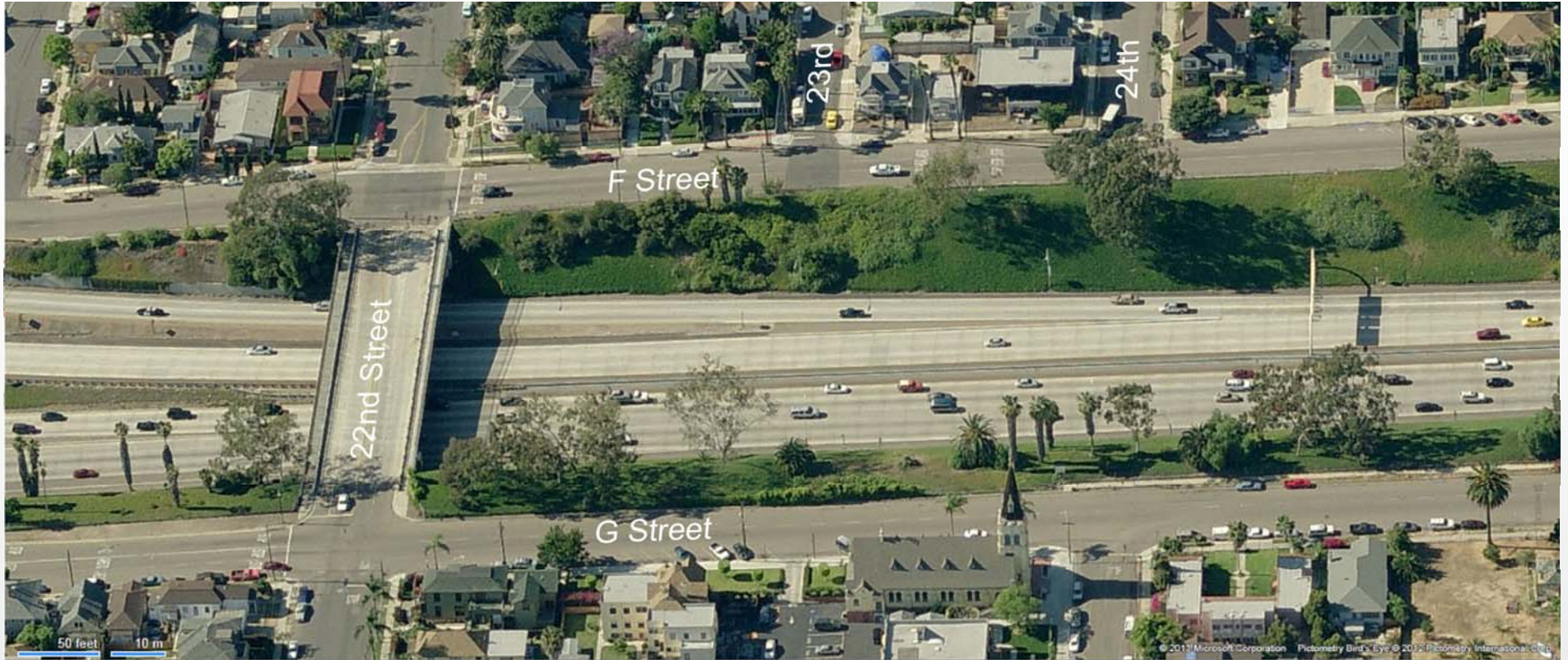


Freeway Decks/Lids

24th Street Pedestrian Plaza



Existing Conditions



Express Lanes

Building Choices for San Diego

Possible Enhancement

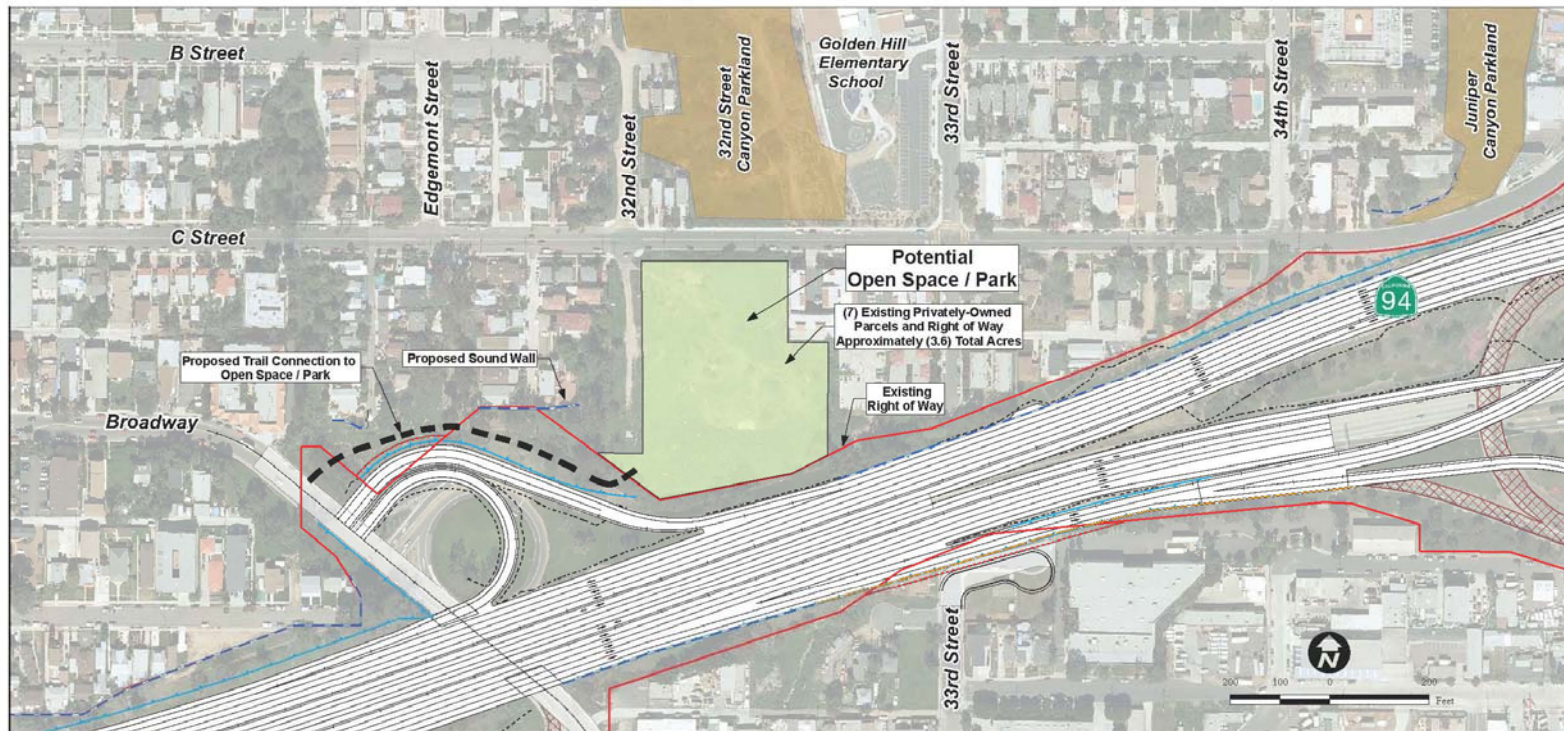


Express Lanes

Building Choices for San Diego

Park or Open Space Acquisitions

32nd Street Parcels

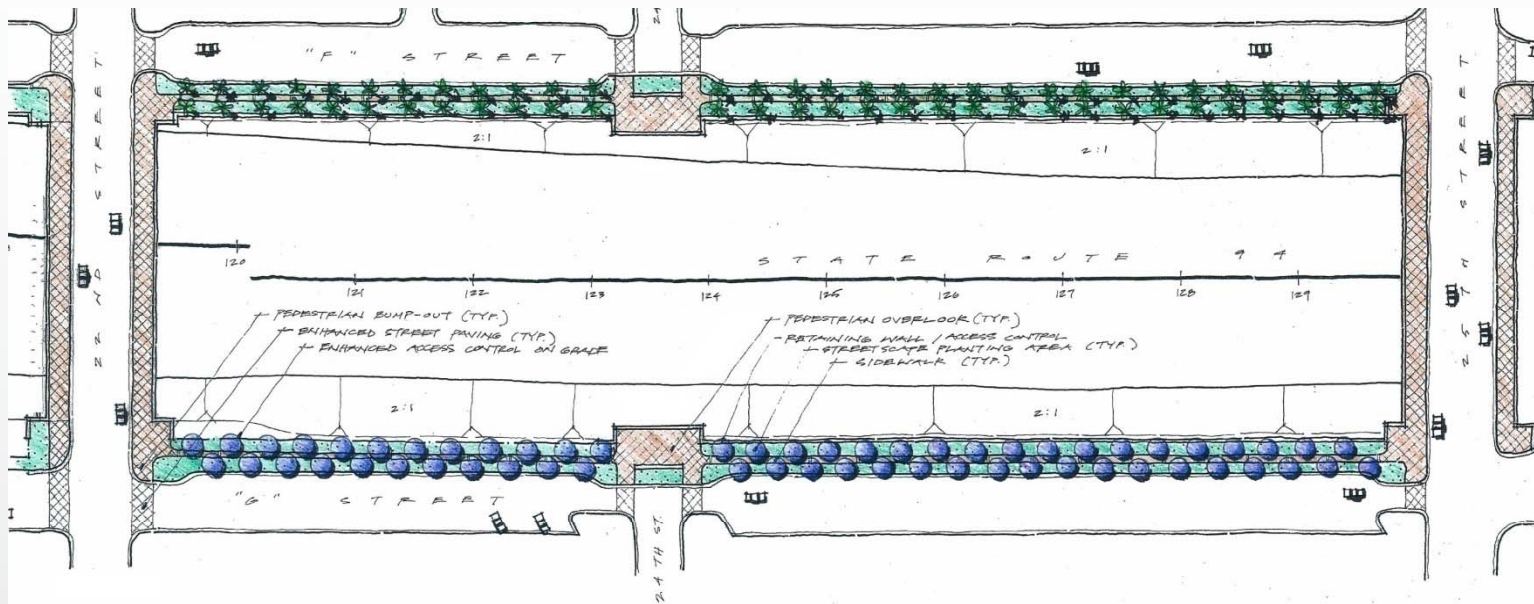


Express Lanes

Building Choices for San Diego

Streetscape Improvements

F Street and G Street 22nd Street to 25th Street



Express Lanes

Building Choices for San Diego

Existing Conditions



Express Lanes

Building Choices for San Diego

Possible Enhancement

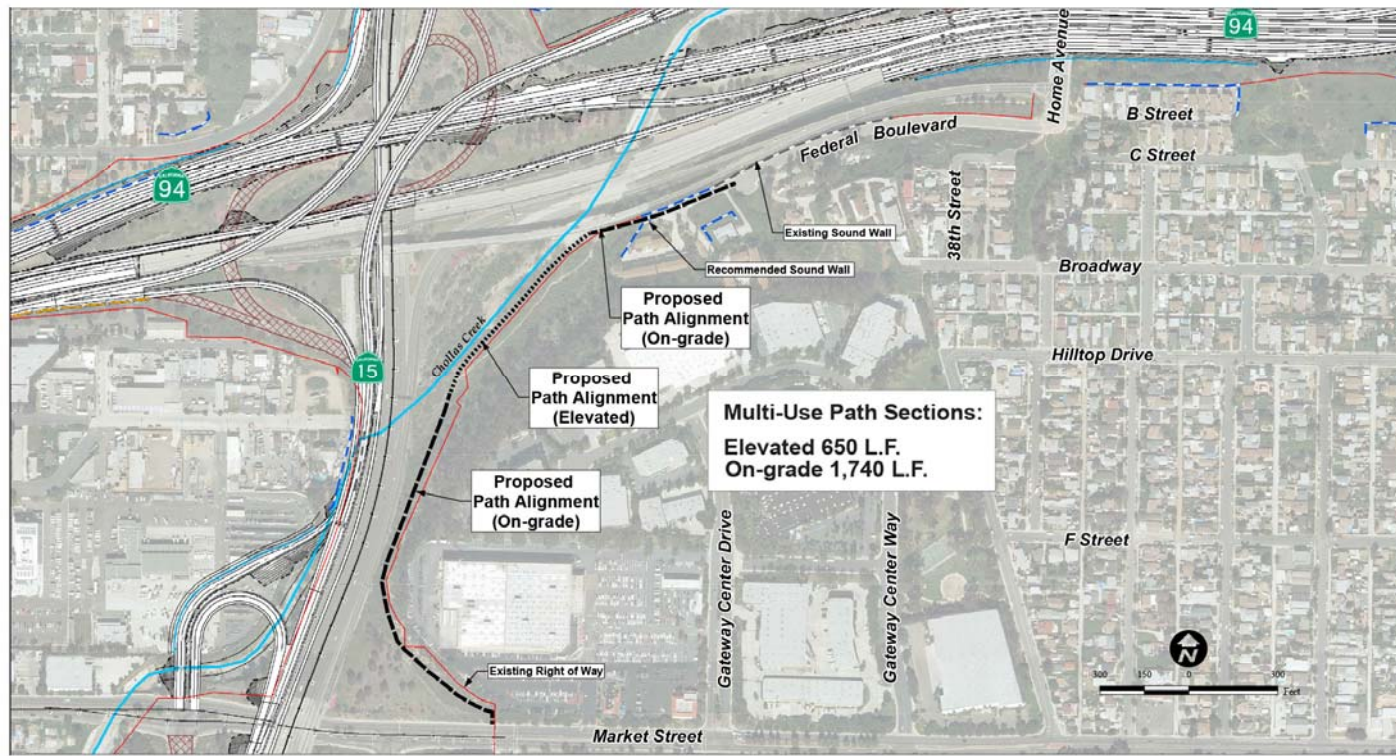


Express Lanes

Building Choices for San Diego

Bicycle/Pedestrian Circulation

Class 1 Multi-Use Path: Federal Blvd. to Market St.



Express Lanes

Building Choices for San Diego

Existing Conditions



Express Lanes

Building Choices for San Diego

Possible Enhancement

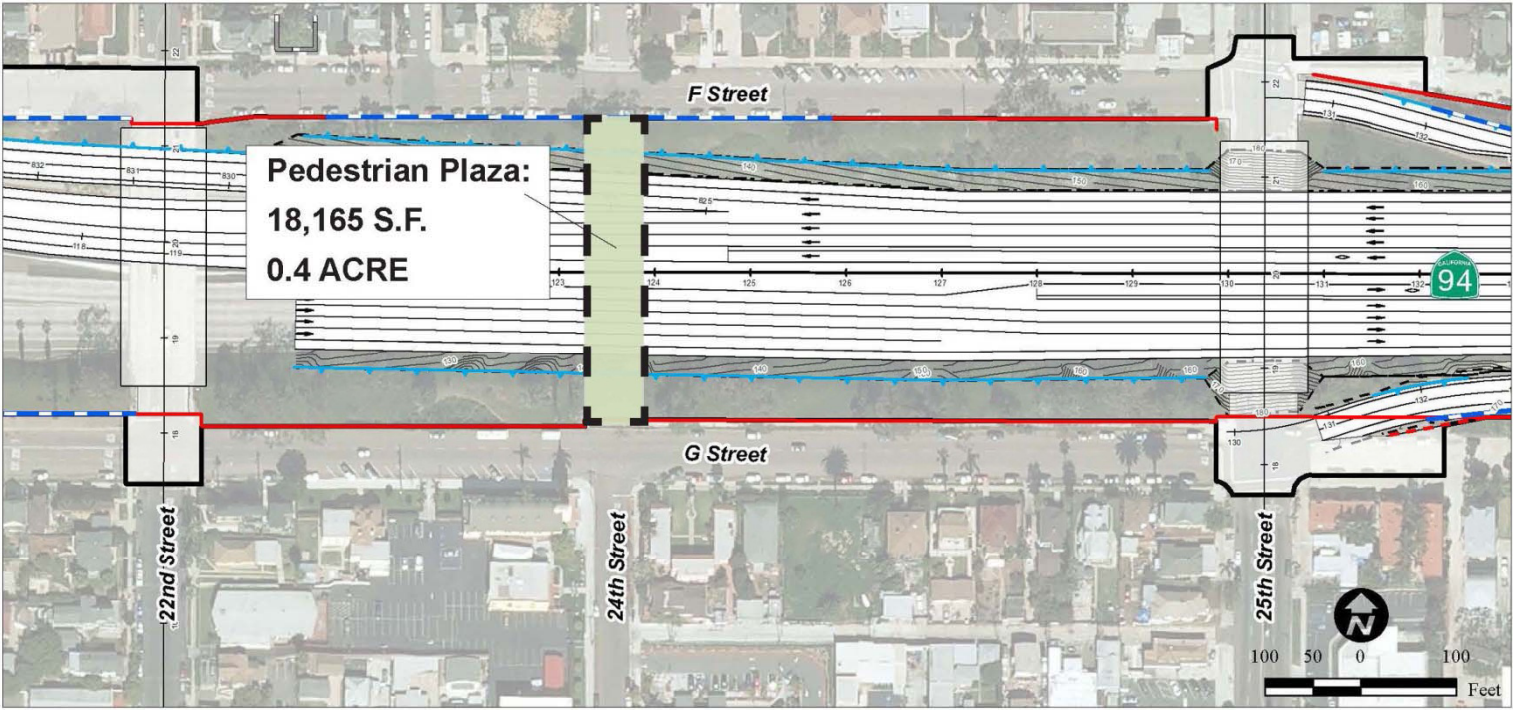


Express Lanes

Building Choices for San Diego

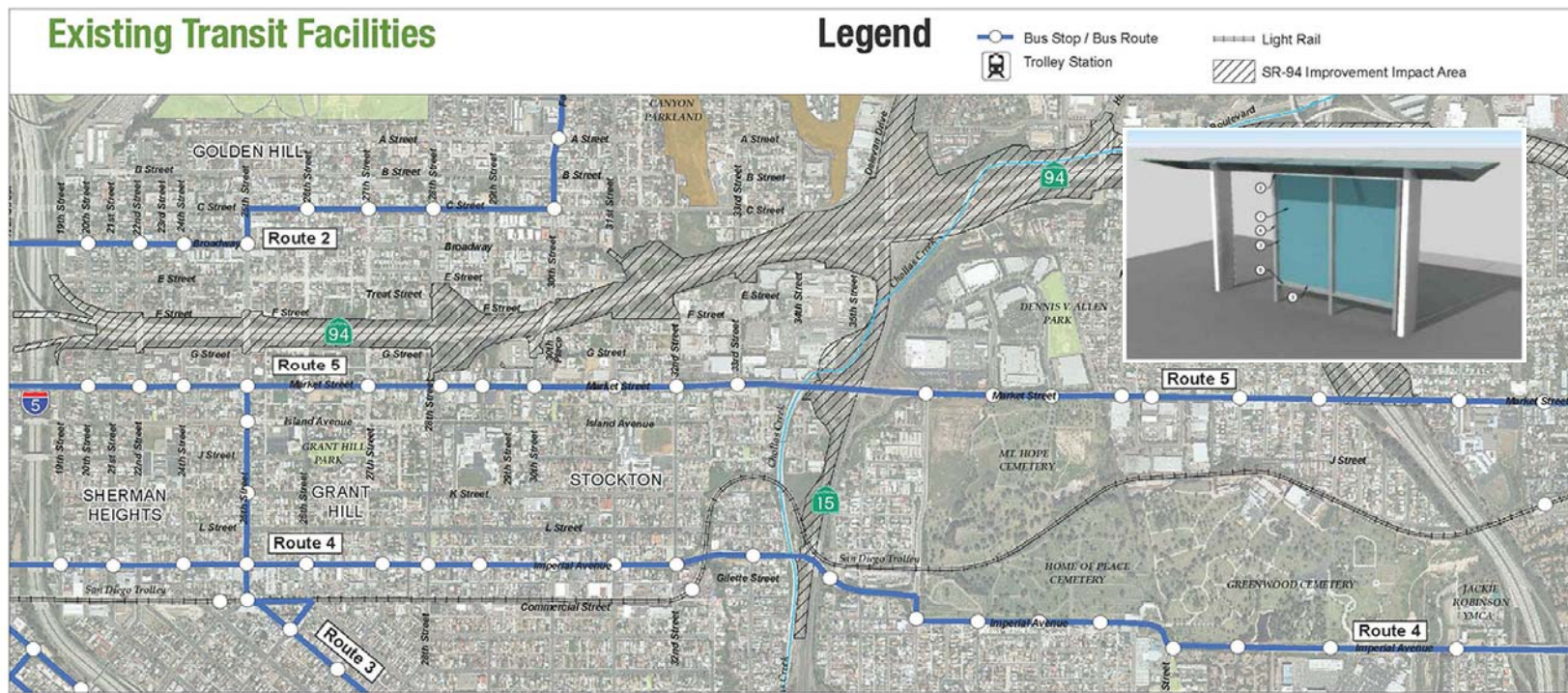
Bicycle/Pedestrian Circulation

24th Street Crossing



Other Options

Local Transit Facility Upgrades

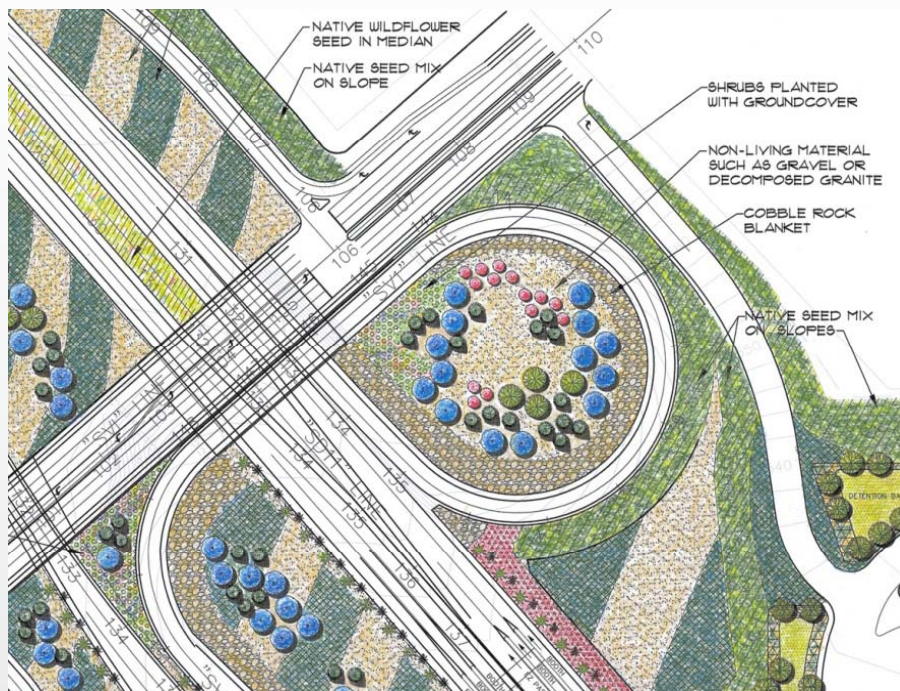


Express Lanes

Building Choices for San Diego

Other Options

Community Identification Monuments



Express Lanes

Building Choices for San Diego

Other Options

Chollas Creek Enhancements



Express Lanes

Building Choices for San Diego

Refining Our Options

- SANDAG has \$15 million budgeted for community enhancements on this project
- Spend budgeted funds on one larger enhancement project or distribute through corridor?
- Identify other funding sources?

We need your help tonight

- **Community Enhancement Focus Group Discussions:**

Freeway Decks and Lids

Bicycle and Pedestrian Circulation

Parks and Open Space

Streetscape Improvements

New and Other Ideas

Spanish Translation

General Project Information



Keep San Diego Moving
TransNet



To stay up to date on the SR 94 Express Lanes Project and sign up for the project email list, please visit:

KeepSanDiegoMoving.com/SR94

