



Brought to you by

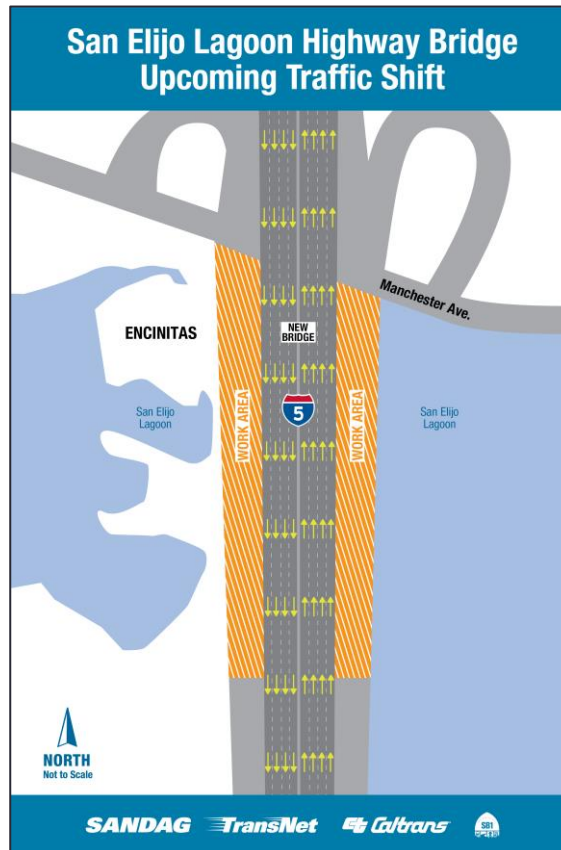


The list below shows planned closures and detours as part of highway, rail, bike, pedestrian, and lagoon improvement projects. Detour signs will be placed, as needed, to assist motorists through closures. Please note, these closures are subject to change.

### Week of October 31

#### HIGHWAY/BIKE/PEDESTRIAN

- **I-5 Traffic Shift** – The **southbound** traffic shift will **begin Thursday, November 4, at 9 p.m.**, and the **northbound** traffic shift will **begin Monday, November 8, at 9 p.m.** Traffic shifts will occur from 9 p.m. to 5 a.m. Signage will be in place to guide motorists into the inside lanes on the San Elijo Lagoon highway bridge.



- Residents and motorists should expect intermittent nighttime construction noise, lane closures, and ramp closures along **I-5** between **Lomas Santa Fe Drive** in Solana Beach and **Palomar Airport Road** in Carlsbad from Sunday, October 31, through Thursday, November 4, from 9 p.m. – 5 a.m. for roadway excavation, roadway restriping, k-rail placement, earthwork hauling and placement, landscape and irrigation, concrete pouring, utility installation, and maintenance.

- Residents and motorists should expect intermittent nighttime construction noise, lane closures, and ramp closures along **Manchester Avenue** at **I-5** and at **Manchester Avenue** and **San Elijo Nature Center** from Sunday, October 31, through Thursday, November 4, from 9 p.m. – 5 a.m. and 7 a.m. to 3 p.m. for placing new roadway base and clearing curb and gutter.
- Residents and businesses should expect intermittent daytime construction noise along **I-5** between **Lomas Santa Fe Drive** in Solana Beach and **Palomar Airport Road** in Carlsbad from Monday, November 1, through Friday, November 5, from 7 a.m. – 5 p.m. for roadway excavation, roadway paving, earthwork hauling and placement, drainage and electrical infrastructure installation, and embankment construction.
- Residents and motorists should expect intermittent daytime construction noise, flagging operations, and reduced lane widths along **Manchester Avenue** at **I-5** from Monday, November 1, through Friday, November 5, from 7 a.m. – 5 p.m. for roadway work, roadway excavation, pedestrian bridge foundation and bridge column work, manhole maintenance, and utility installation.

---

## LAGOON

- Residents and businesses along N. Rios Avenue in Solana Beach and Manchester Avenue in Encinitas can expect vehicle traffic as well as general noise and back-up alarms from Monday, November 1, through Friday, November 5, from 7 a.m. – 5 p.m. for transport of equipment, plants, and other materials to and from the San Elijo Lagoon.
- To view current San Elijo Lagoon trail closures please visit [thenaturecollective.org/trails](http://thenaturecollective.org/trails). For information on the San Elijo Lagoon Restoration project, please visit [thenaturecollective.org/project/san-elijo-lagoon-restoration](http://thenaturecollective.org/project/san-elijo-lagoon-restoration).

Sign up for project updates at [KeepSanDiegoMoving.com/BuildNCC](http://KeepSanDiegoMoving.com/BuildNCC),  
or text **BuildNCC** to **313131** to receive construction alerts. For questions, please call **844-NCC-0050**.