



Buena Vista Lagoon

Stewart St

Vista Way

Kelly St

Cassidy St

NORTH

TO SAN DIEGO

TO LOS ANGELES



Las Flores Dr



Soto St

Buena Vista Lagoon

OCEANSIDE

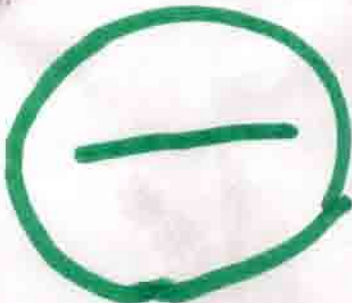
CARLSBAD

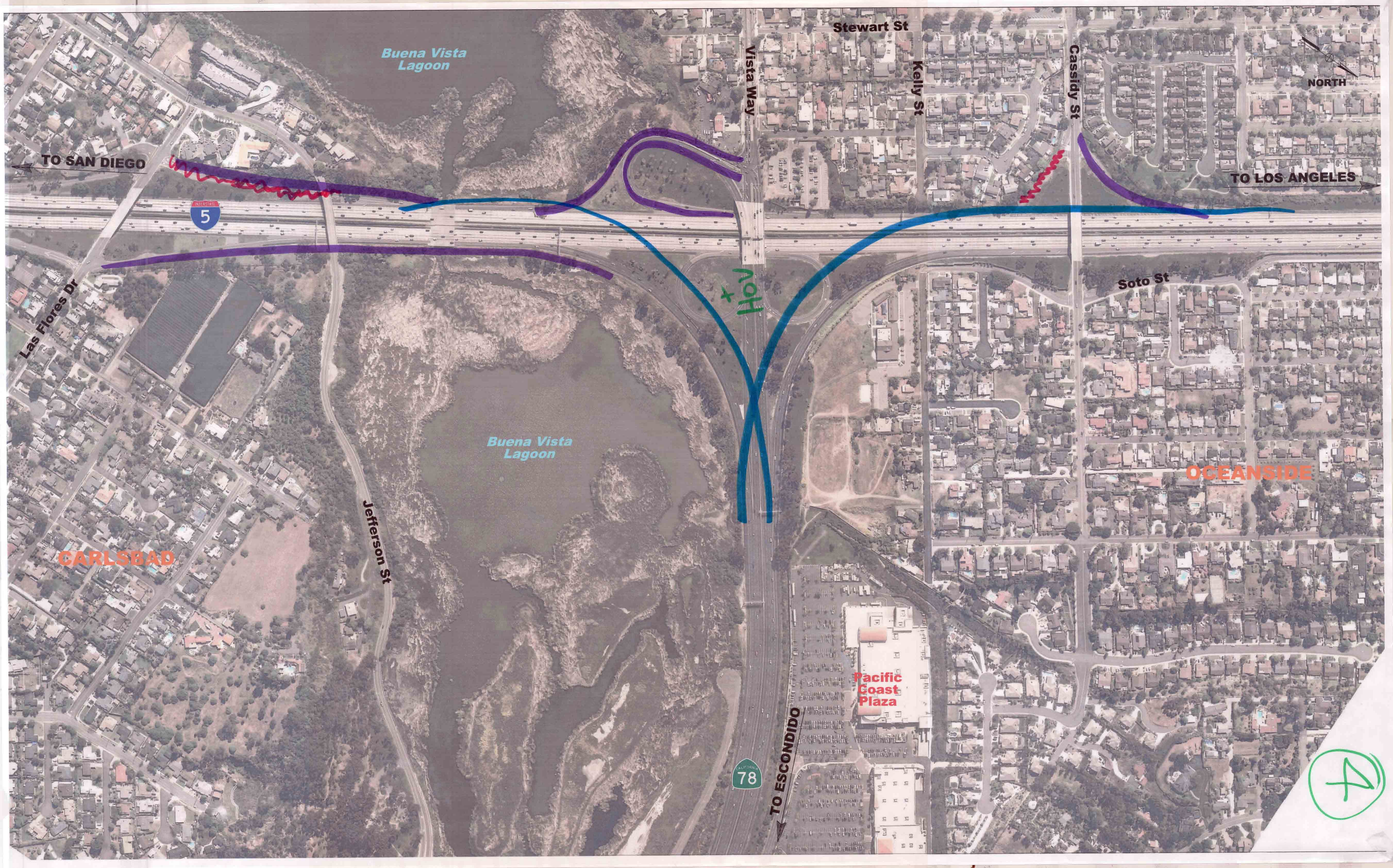
Jefferson St

Pacific Coast Plaza



TO ESCONDIDO





Buena Vista Lagoon

Stewart St

Vista Way

Kelly St

Cassidy St

NORTH

TO SAN DIEGO

TO LOS ANGELES

5

Las Flores Dr

HOV 3+

Soto St

Buena Vista Lagoon

OCEANSIDE

CARLSBAD

Jefferson St

Pacific Coast Plaza

78

TO ESCONDIDO

4



Buena Vista Lagoon

Stewart St

Vista Way

Kelly St

Cassidy St

NORTH

TO SAN DIEGO

TO LOS ANGELES



Roundabout

HOV

GP

GP

Soto St

OCEANSIDE

Las Flores Dr

CARLSBAD

Jefferson St

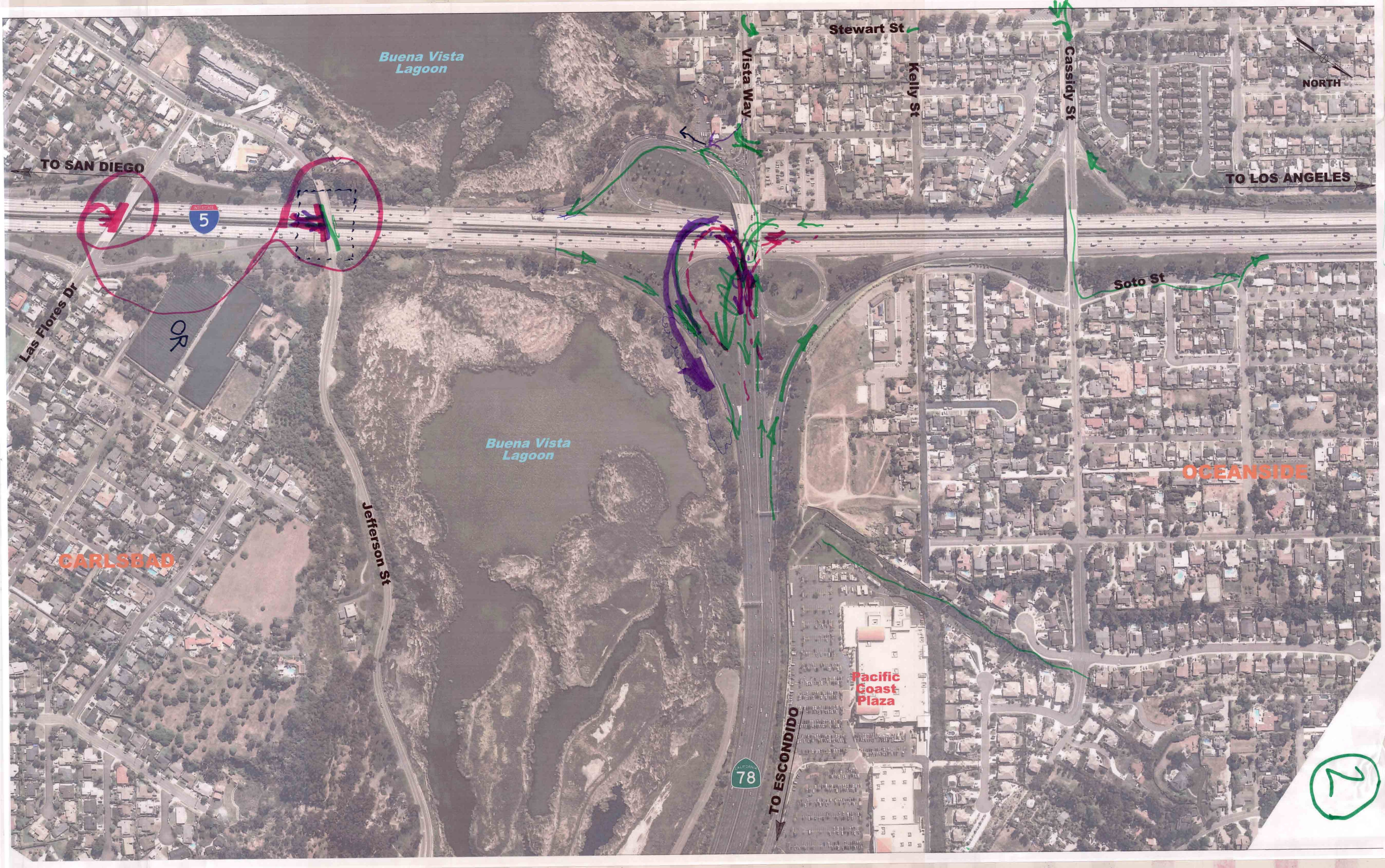
Buena Vista Lagoon

Pacific Coast Plaza



TO ESCONDIDO

3



Buena Vista Lagoon

NORTH

TO SAN DIEGO

TO LOS ANGELES

5

78

Stewart St

Vista Way

Kelly St

Cassidy St

Las Flores Dr

OR

Soto St

Buena Vista Lagoon

OCEANSIDE

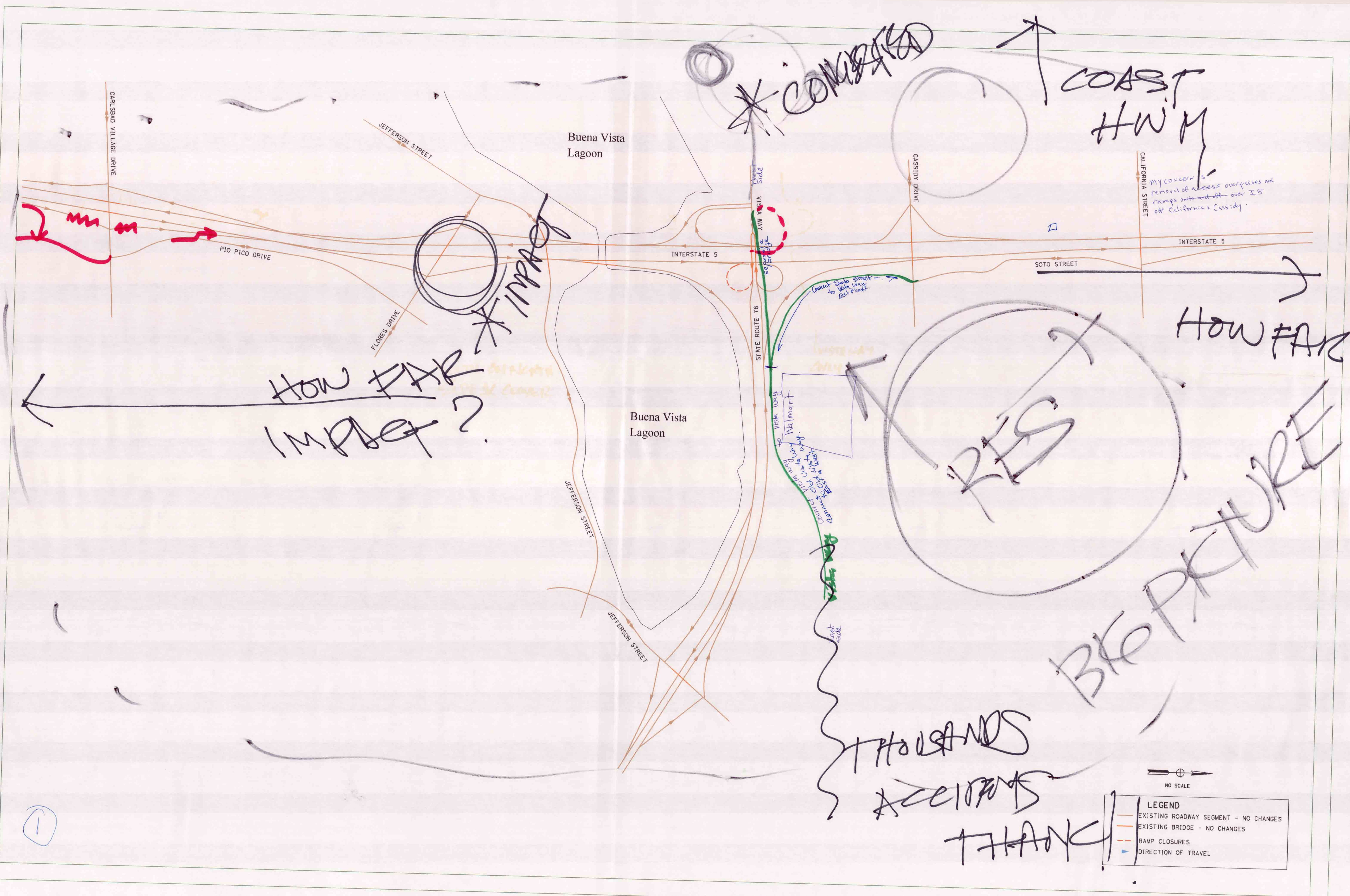
CARLSBAD

Jefferson St

Pacific Coast Plaza

TO ESCONDIDO

2



~~CONGESTED~~

COAST HWY

MY CONCERN IS
removal of access overpasses and
ramps onto and off over I5
off California + Cassidy.

How FAR
IMPACT?

RIS

BIO PICTURE

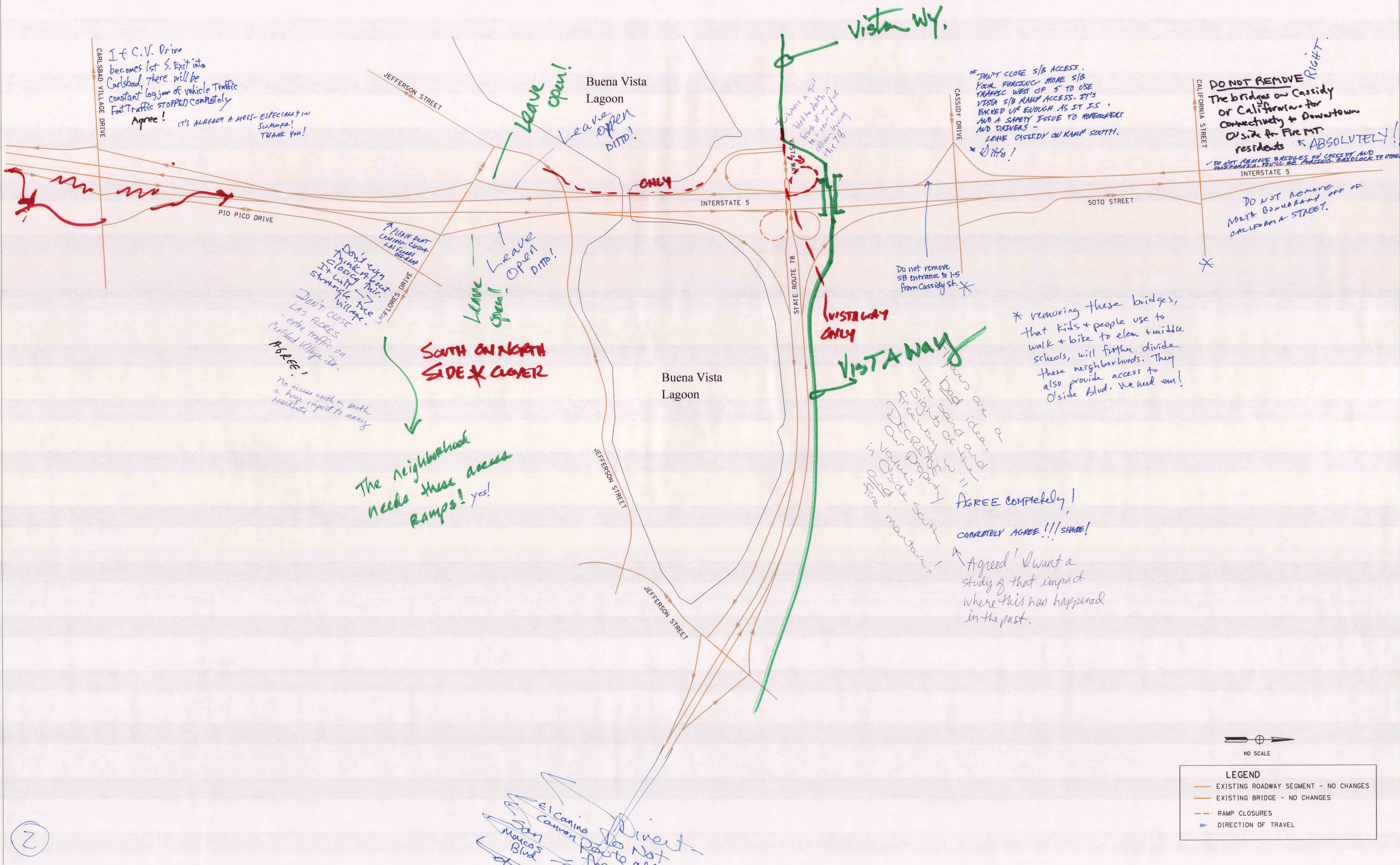
THOUSANDS
ACCIDENTS
THANK!

NO SCALE

LEGEND

- EXISTING ROADWAY SEGMENT - NO CHANGES
- EXISTING BRIDGE - NO CHANGES
- - - RAMP CLOSURES
- ▶ DIRECTION OF TRAVEL

①



If C.V. Drive becomes 1st S. Exit into Carlsbad, there will be constant logjam of vehicle traffic. Foot Traffic STOPPED completely. Agree! IT'S ALREADY A MESS - ESPECIALLY IN SUMMER! THANK YOU!

Leave open!
Leave open DIMP!

* DON'T CLOSE S/B ACCESS. YOUR FORCING MORE S/B TRAFFIC WEST OF 5 TO USE VISTA S/B RAMP ACCESS. IT'S BACKED UP ENOUGH AS IT IS AND A SAFETY ISSUE TO HOMEOWNERS AND DRIVERS - LEAVE CASSEIDY ON RAMP SOUTH. * Wtf!

DO NOT REMOVE THE bridges on Cassidy or California for Connectivity + Downtown O'side for Fire Mt residents **ABSOLUTELY!!**

DO NOT REMOVE NORTH BOUND RAMP OFF OF CALIFORNIA STREET.

PLEASE DON'T CLOSE CASSEIDY LAS FLORES DRIVE
Don't even think about closing this. It will cause a traffic jam.
DON'T CLOSE LAS FLORES - extra traffic on Carlsbad Village Dr.
No access north or south a huge impact to many residents

SOUTH ON NORTH SIDE X COVER

The neighborhood needs these access Ramps! yes!

Do not remove SB entrance to I-5 from Cassidy St. *

* removing these bridges, that kids + people use to walk + bike to elem + middle schools, will further divide these neighborhoods. They also provide access to O'side Blvd. We need em!

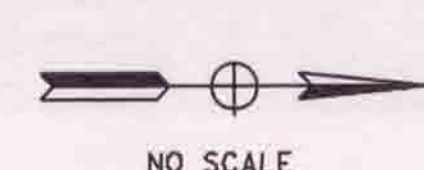
These are a bad idea. The sand and dirt will be a nightmare for our property in O'side South. Please don't fire mountain!

AGREE COMPLETELY!

COMPLETELY AGREE !!! SHAME!

Agreed! I want a study of that impact where this has happened in the past.

Divert - Do Not - San Marcos Blvd - etc. - El Camino - Canyon - Ave - through the Lagoon. why not it's wasted land.



LEGEND	
—	EXISTING ROADWAY SEGMENT - NO CHANGES
—	EXISTING BRIDGE - NO CHANGES
- - -	RAMP CLOSURES
→	DIRECTION OF TRAVEL

Keep Cassidy St Ramp
back open South - North

Scenario A is not good!

Do NOT
Close
L.F. on ramp!
THX

People who live East
use the ramp to get
to the school

School
TRAFFIC

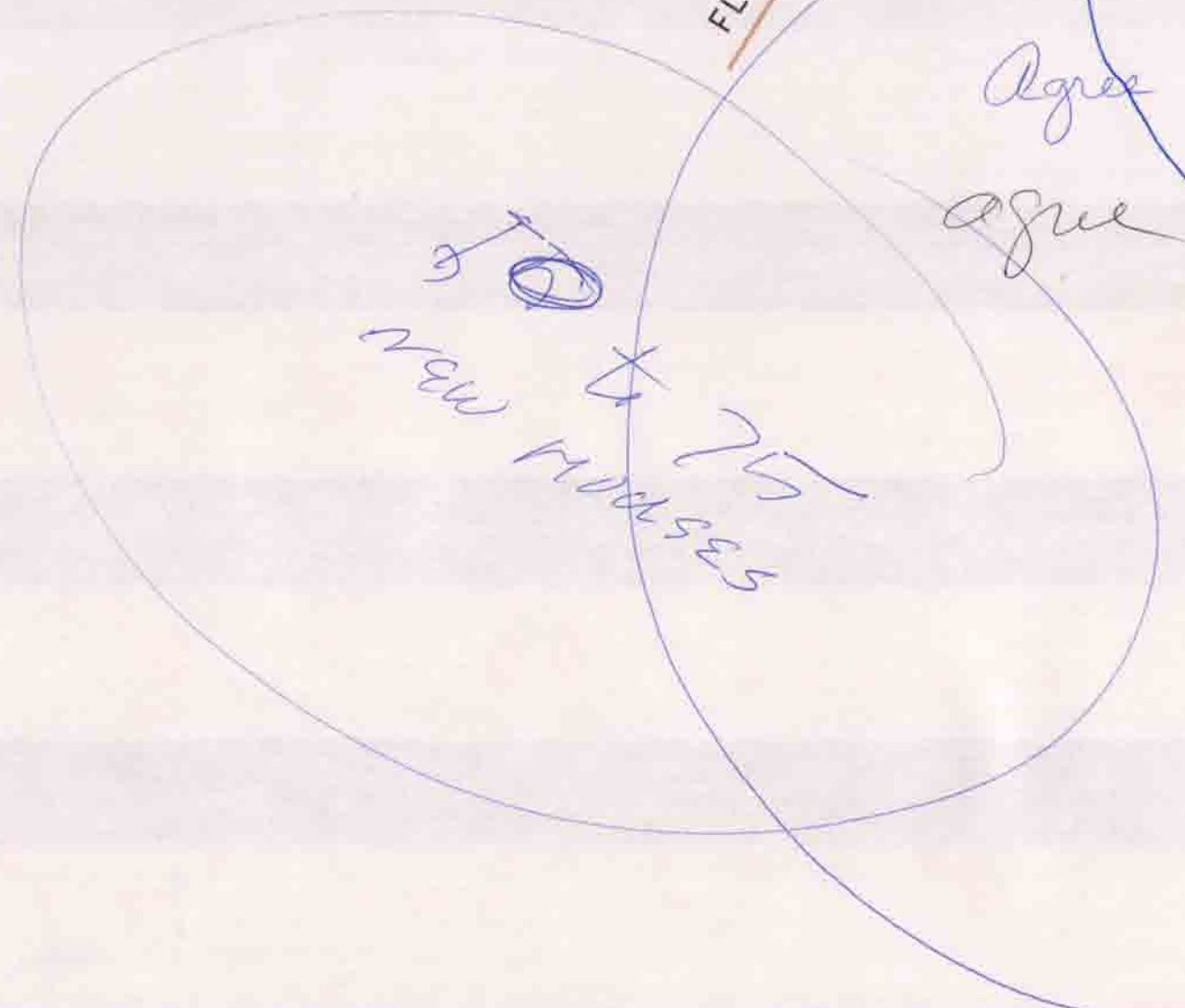
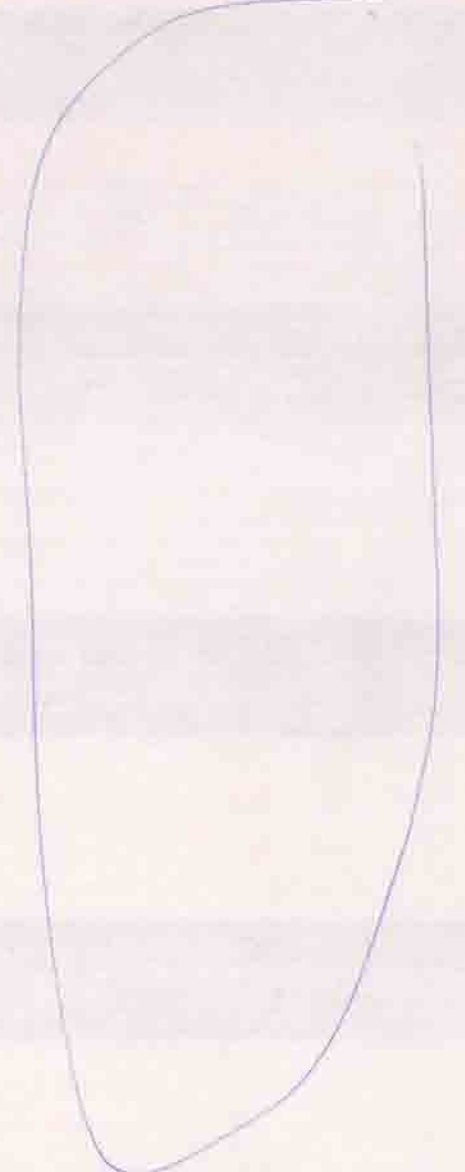
REMAIN
OPEN

Close Cassidy on-ramp!
L.F. Cassidy on-ramp!

Remain
Open

School
TRAFFIC

+

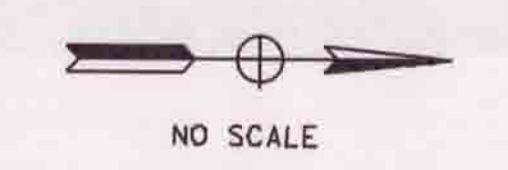
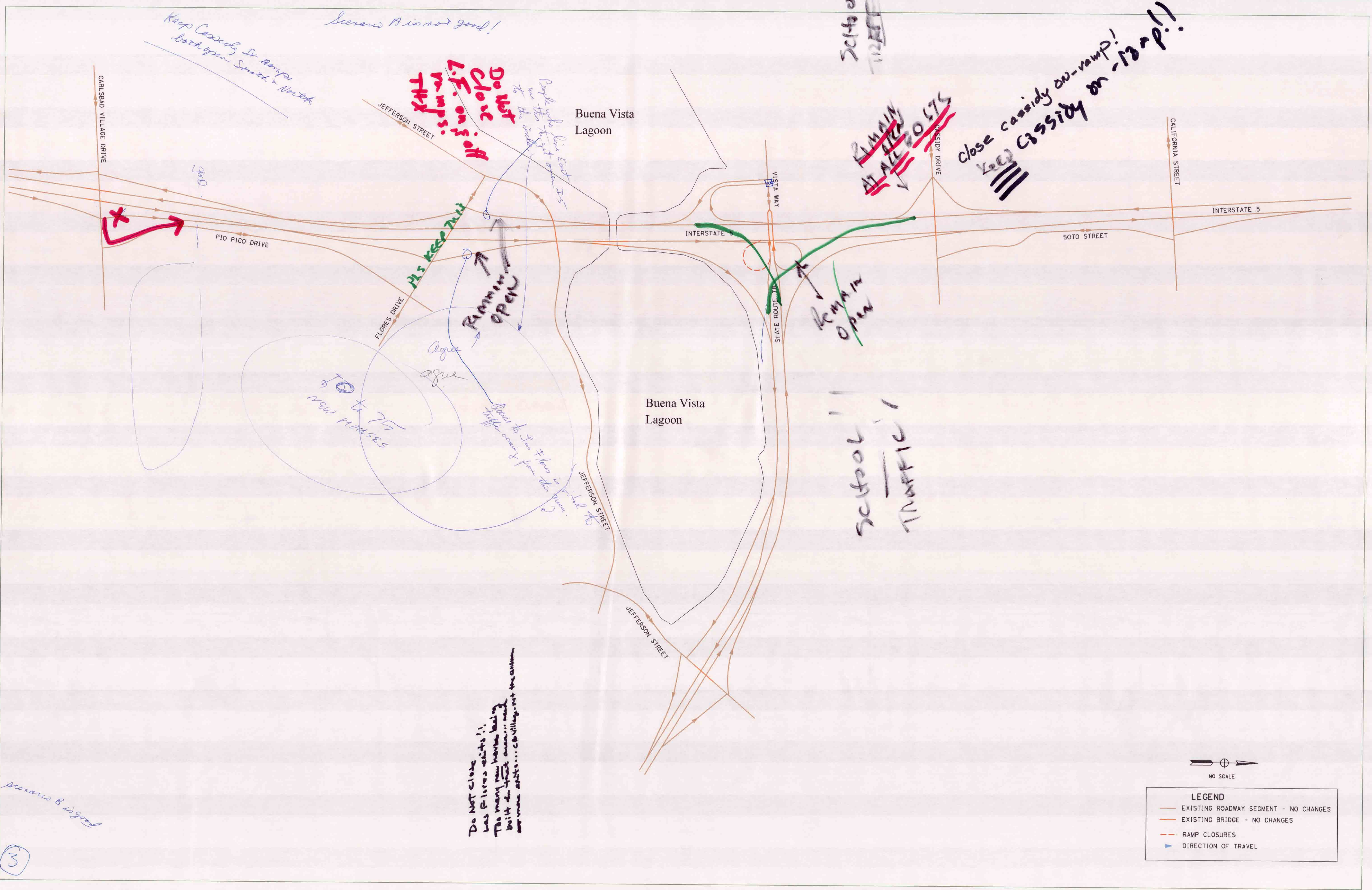


Open to San Flores in
traffic coming from the area.

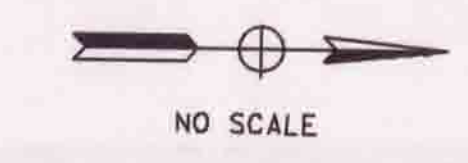
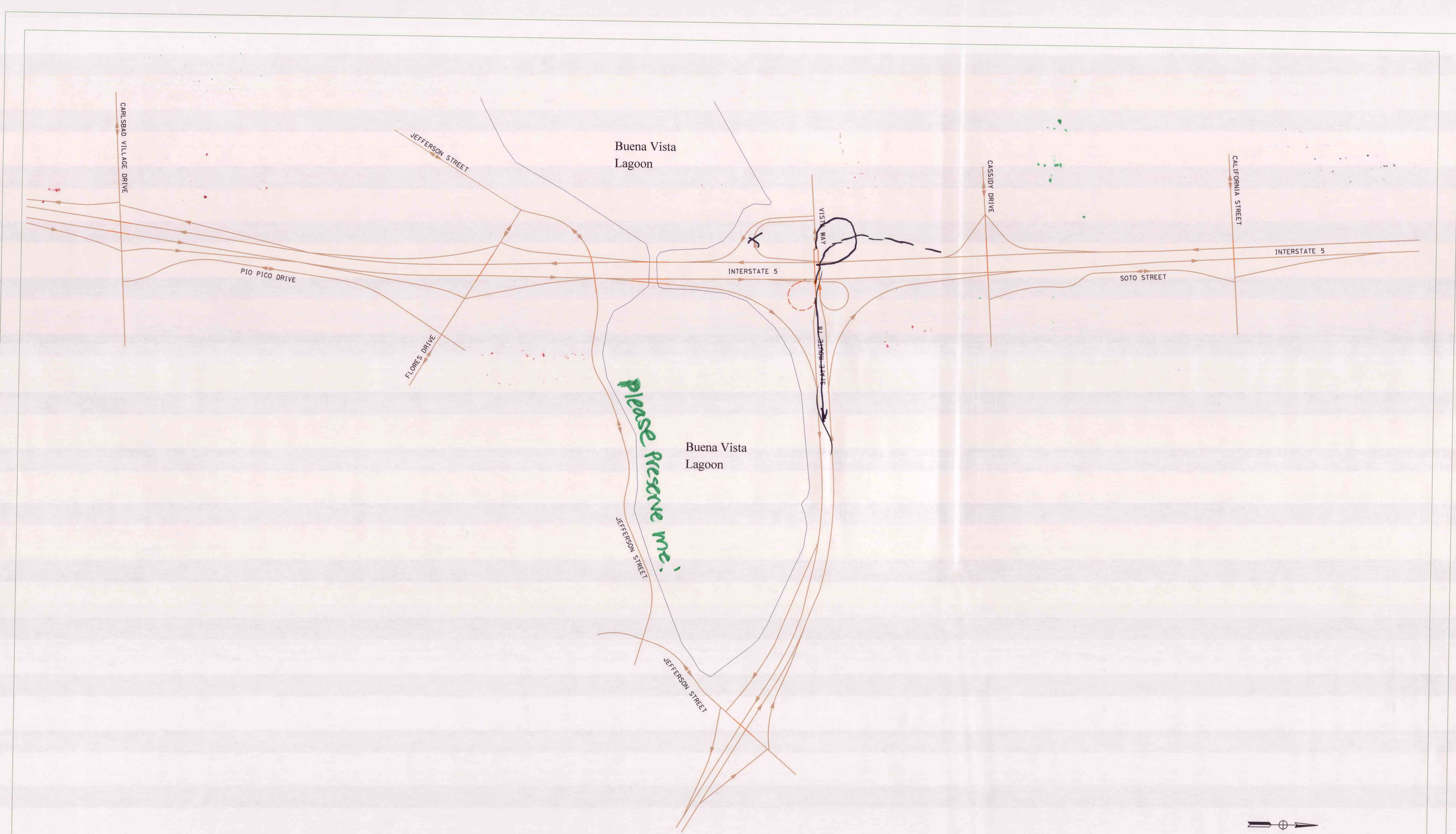
Do NOT close
Las Flores exits!!
The many new houses being
built in that area... need
more exits... CB Village... not the answer

Scenario B is good

3

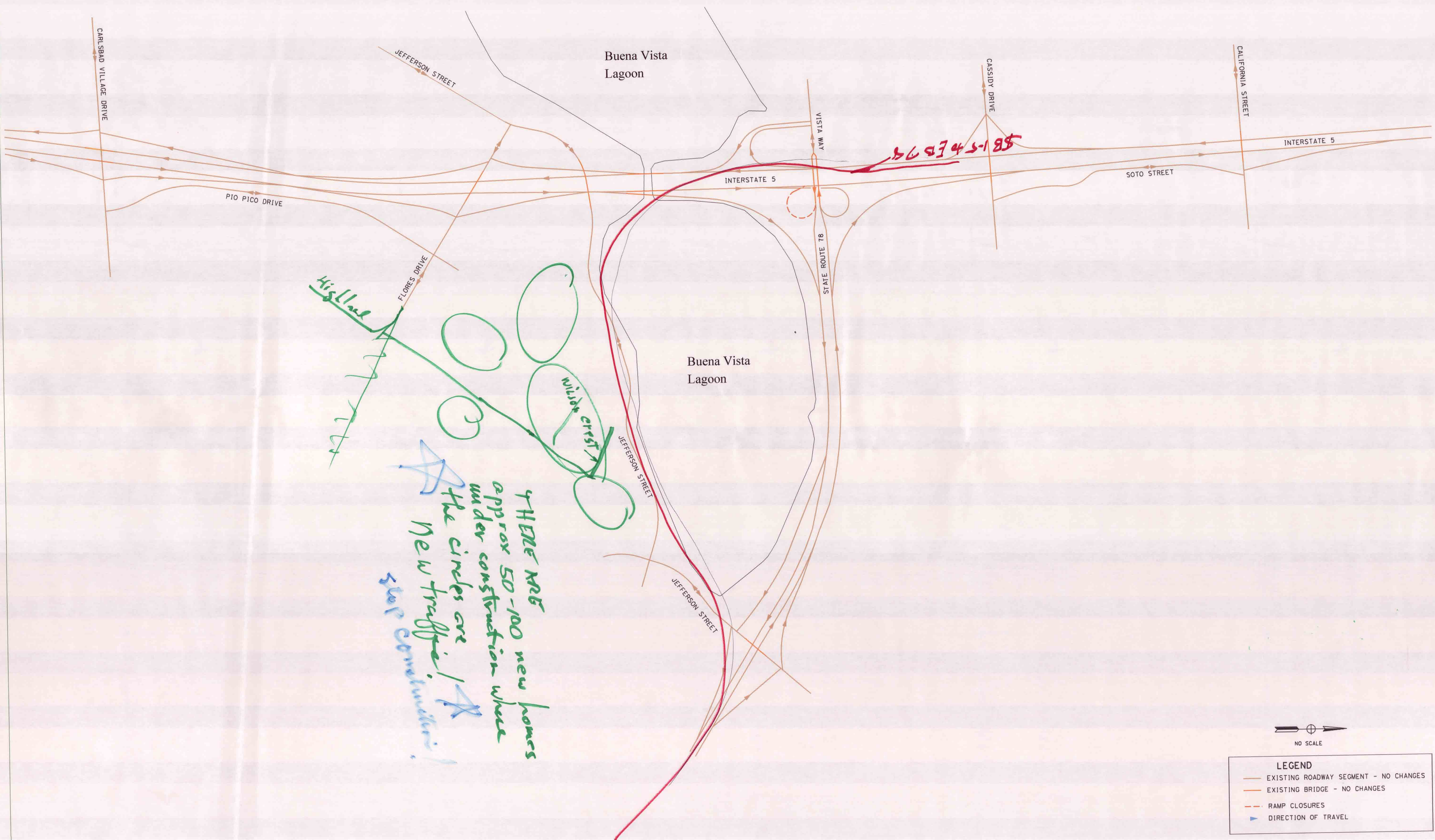


LEGEND	
	EXISTING ROADWAY SEGMENT - NO CHANGES
	EXISTING BRIDGE - NO CHANGES
	RAMP CLOSURES
	DIRECTION OF TRAVEL



- LEGEND**
- EXISTING ROADWAY SEGMENT - NO CHANGES
 - EXISTING BRIDGE - NO CHANGES
 - - - RAMP CLOSURES
 - ▶ DIRECTION OF TRAVEL

4

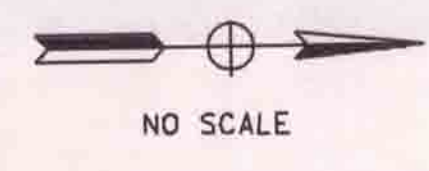


Highland
 Flores Drive
 wide crest
 Jefferson Street

★
 WHERE ARE
 approx 50-100 new homes
 under construction where
 the circles are! ★
 New traffic! ★
 Star construction!

SB I-5 to EB 78

Loop LA out



LEGEND	
	EXISTING ROADWAY SEGMENT - NO CHANGES
	EXISTING BRIDGE - NO CHANGES
	RAMP CLOSURES
	DIRECTION OF TRAVEL