

To all Residents

The San Diego Association of Governments (SANDAG), in collaboration with the San Diego Metropolitan Transit System (MTS), has created the *Rapid* network, a region-wide strategy to provide faster and more efficient transit choices. As part of this effort, SANDAG and MTS have embarked on an ambitious transit initiative called the South Bay *Rapid* project, which will introduce express transit service to South County, including the City of Chula Vista and southeastern San Diego near the Otay Mesa Port of Entry. Work has been ongoing on the South San Diego County segment (called South Bay *Rapid*) for more than a year. When completed, the new service will provide a link between Downtown San Diego and the Otay Mesa Point of Entry. More information on South Bay *Rapid* can be found at:

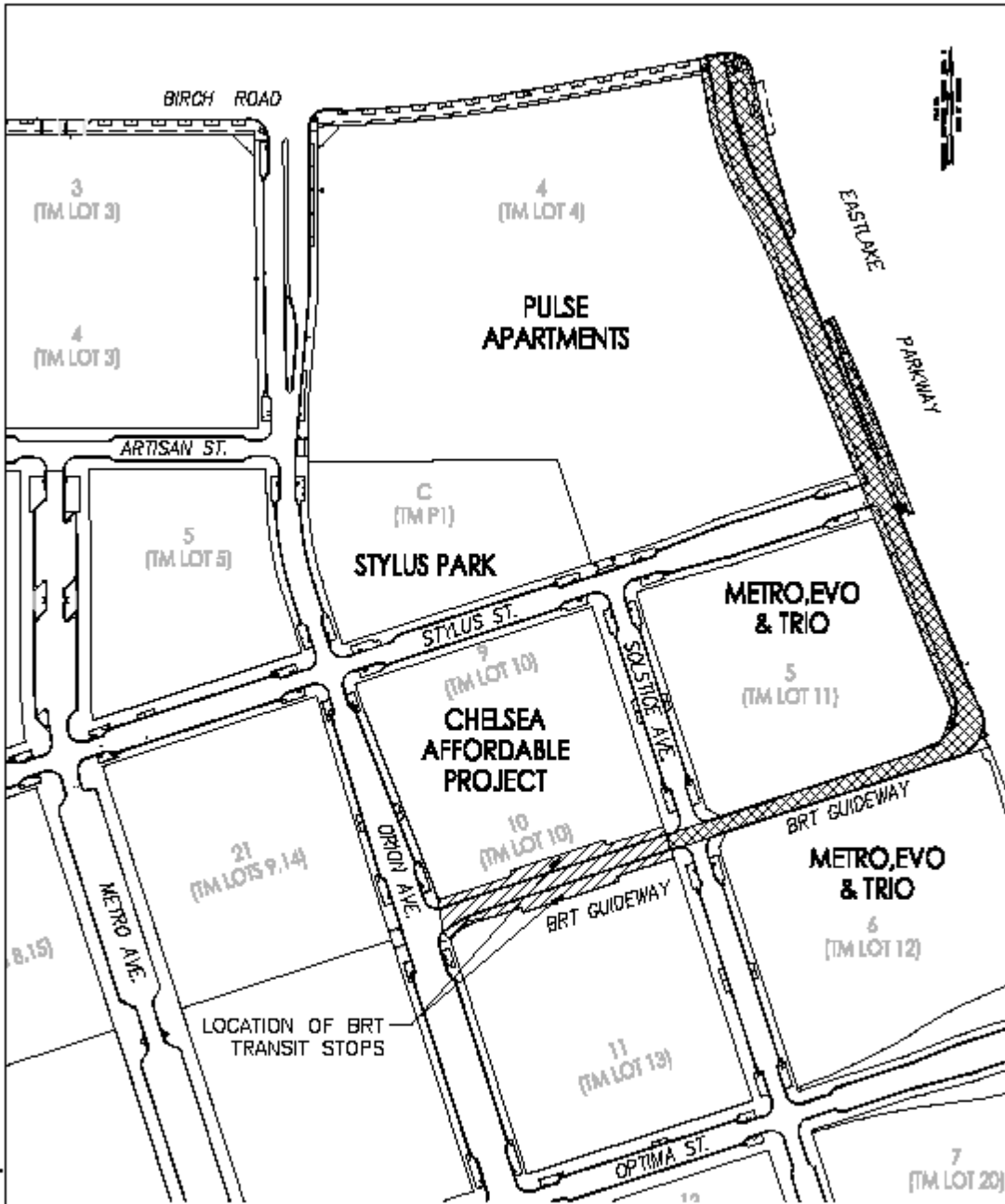
http://www.keepsandiegomoving.com/Rapid/SouthBayRapid_introduction.aspx

As part of the South Bay *Rapid* project, a dedicated transit guideway is being constructed between the South Bay Expressway and Interstate 805 in eastern Chula Vista. A portion of this guideway will run through the Millenia project, including dedicated transit lanes in the center of Orion Avenue. The first of two segments of the guideway (see attached exhibit showing Phases 1 and 2 of the transit guideway) was constructed as part of the first phase of the Millenia project. That phase runs from Birch Road south to the Metro, Evo and Trio projects, where it turns west to intersect with Solstice Street. The second phase of the guideway runs from Solstice Street west to Orion Street as shown on the exhibit. A transit station will be located at the midpoint of the Phase 2 guideway.

A construction contract has been awarded to finish the South Bay *Rapid* dedicated transit guideway at Millenia. That work will include construction of the Phase 2 guideway and remaining improvements on the Phase 1 guideway. Those remaining improvements will include pedestrian and vehicular signalization, utility work, and final paving. Construction is scheduled to start on or about Monday, September 11 and continue for approximately four months. Work can be expected to occur during weekdays from 7 a.m. to 5 p.m. Every effort will be made to avoid night work, or work on weekends or holidays.

Should you have any questions on the project construction, you can contact Robert Olimon of Meridian Development at (619) 794-1204. If you have any questions related to the overall South Bay *Rapid* project, you can contact the project team at (888) 754-5062.

South Bay *Rapid* transit service is expected to begin at Millenia in 2018.





2017-10-17 - 12:00 - 12:00
 2017-10-17 - 12:00 - 12:00
 2017-10-17 - 12:00 - 12:00



MILLENNIA - BRT EXHIBIT

LEGEND:

	BRT - PHASE 1
	BRT - PHASE 2

2017 Rick Engineering Company

