

Segment	Project Limits	Description	Begins
1	Highway: Lomas Santa Fe Dr. to Manchester Ave.	One HOV lane in each direction, ultimate widening through San Elijo Lagoon, Park & Ride at Manchester Ave., some sound walls on private property, and San Elijo Lagoon bridge replacement	Early 2017
	Railroad: San Elijo Double Track Project	1.5 miles of double track, modify at-grade crossing at Chesterfield Ave., and San Elijo Lagoon bridge replacement	Early 2017
	San Elijo Lagoon	Restoration	Mid-2017

Segment	Project Limits	Description	Begins
2	Highway: Manchester Ave. to Palomar Airport Rd.	One HOV lane in each direction, add pedestrian access at Encinitas Blvd. and Santa Fe Dr., sound walls on private property, ultimate widening through the Batiquitos Lagoon, and Batiquitos Lagoon bridge replacement	Late 2017
	Railroad: Batiquitos Lagoon Double Track Project	.75 miles of double track, Batiquitos Lagoon bridge replacement	Late 2017
3	Highway: Palomar Airport Rd. to SR 78	One HOV lane in each direction and sound walls on private property	Mid-2018



HOV/Carpool Lanes from Lomas Santa Fe Dr. to SR 78



Batiquitos Lagoon and San Elijo Lagoon Double Track



North Coast Bike Trail



Encinitas Blvd./Santa Fe Dr. Bike/Pedestrian Enhancements



Lagoon Bridge Replacements\*



Sound Walls\*\*



San Elijo Lagoon Restoration and Environmental Enhancements



\* Bridge replacements will help improve tidal flow and overall lagoon health.

\*\* Not all proposed sound walls will be transparent (glass).

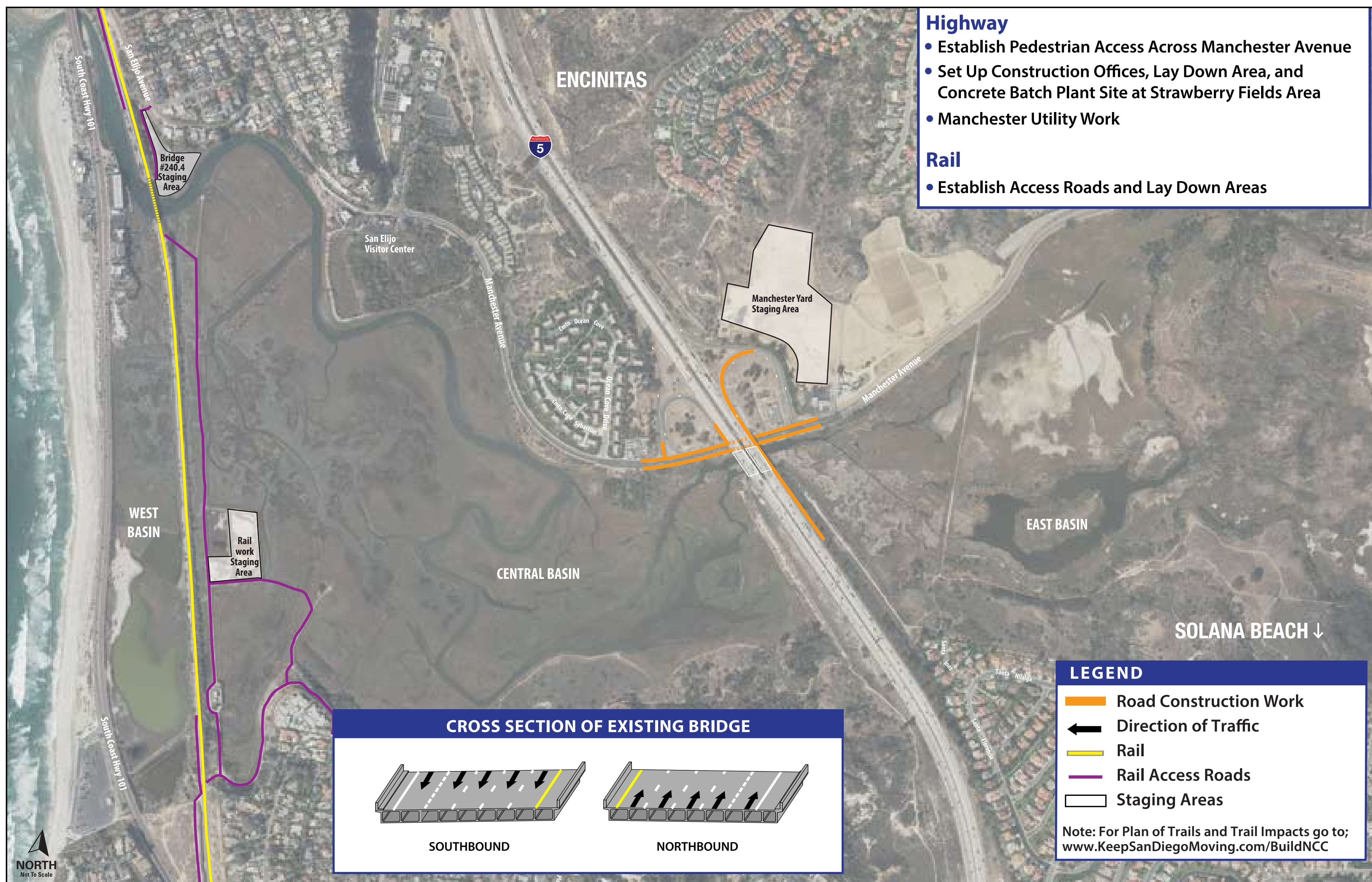
### LEGEND

- New HOV/Carpool Lanes (one in each direction)
- New Auxiliary Lane
- Sound Walls
- Street Improvements
- Bike/Pedestrian Access Improvements
- Coastal Rail Line
- New Double Track
- Bike Route
- Class 1 Bike Path
- New Pedestrian Path
- Existing Path
- Lagoon Bridge Replacement
- Rail Crossing Improvements
- New Overpass/Underpass
- Point of Interest
- Manchester Ave. Roundabout

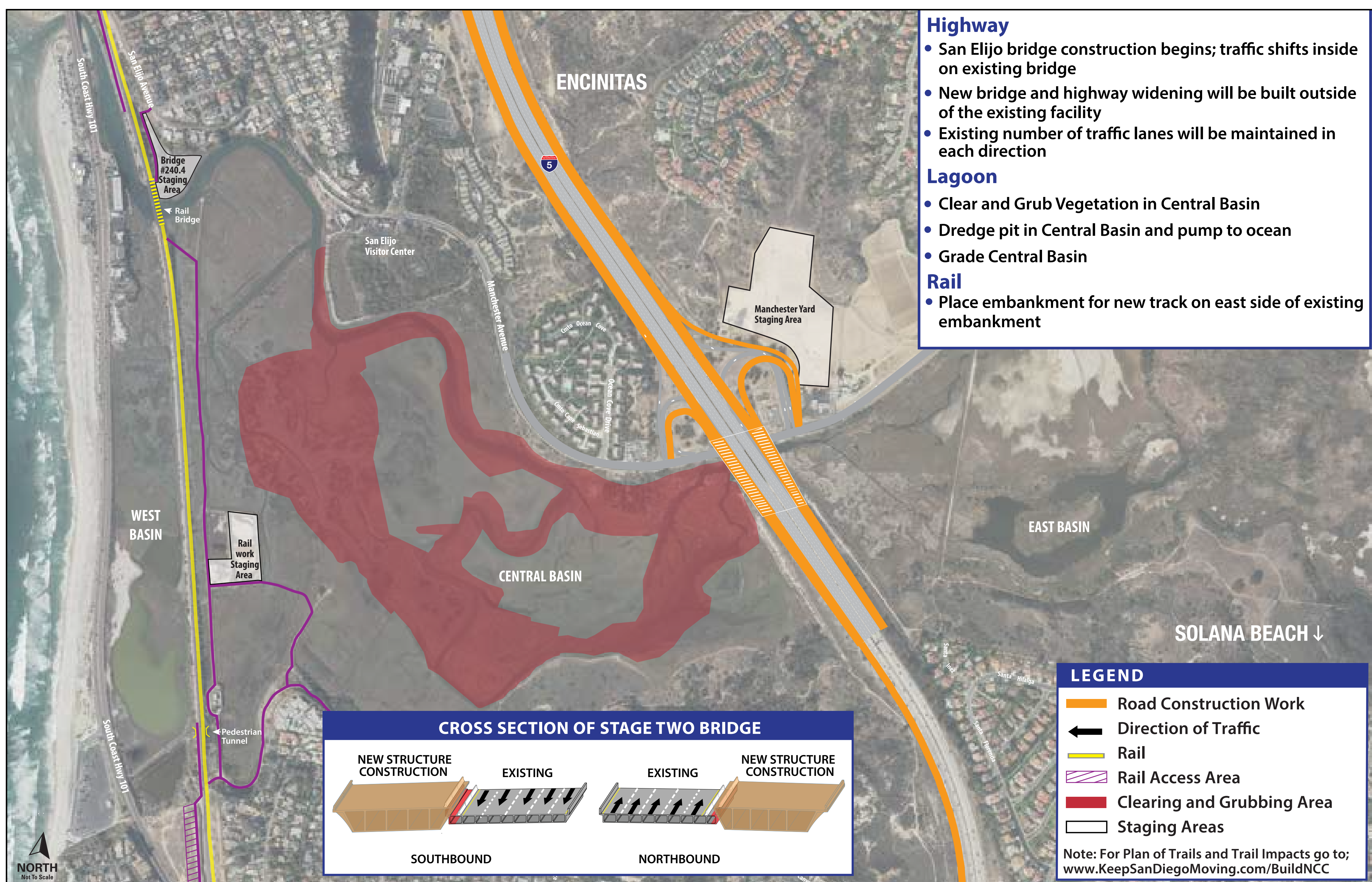




## Stage 1: 6 months

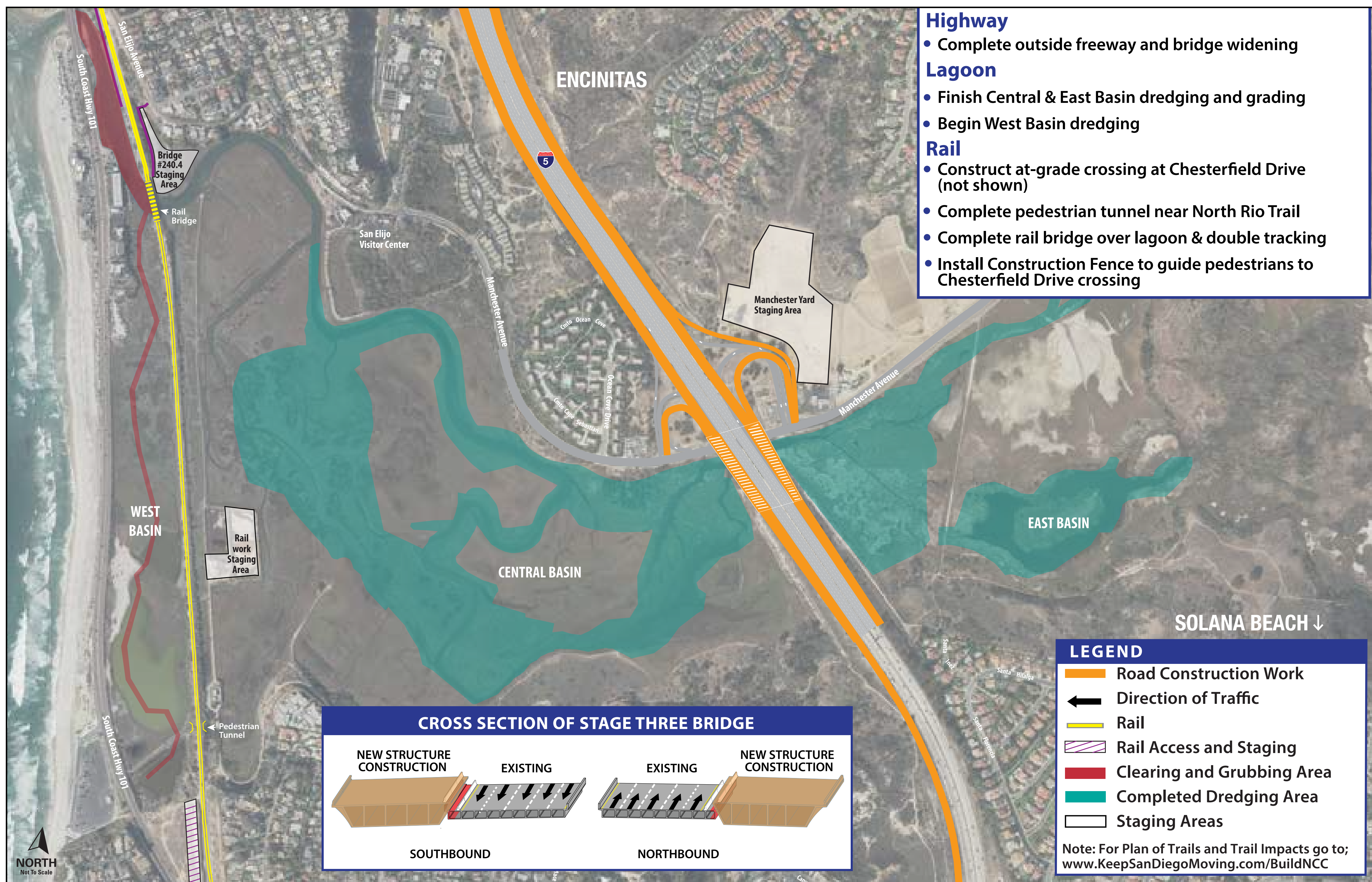


## Stage 2: 12 months

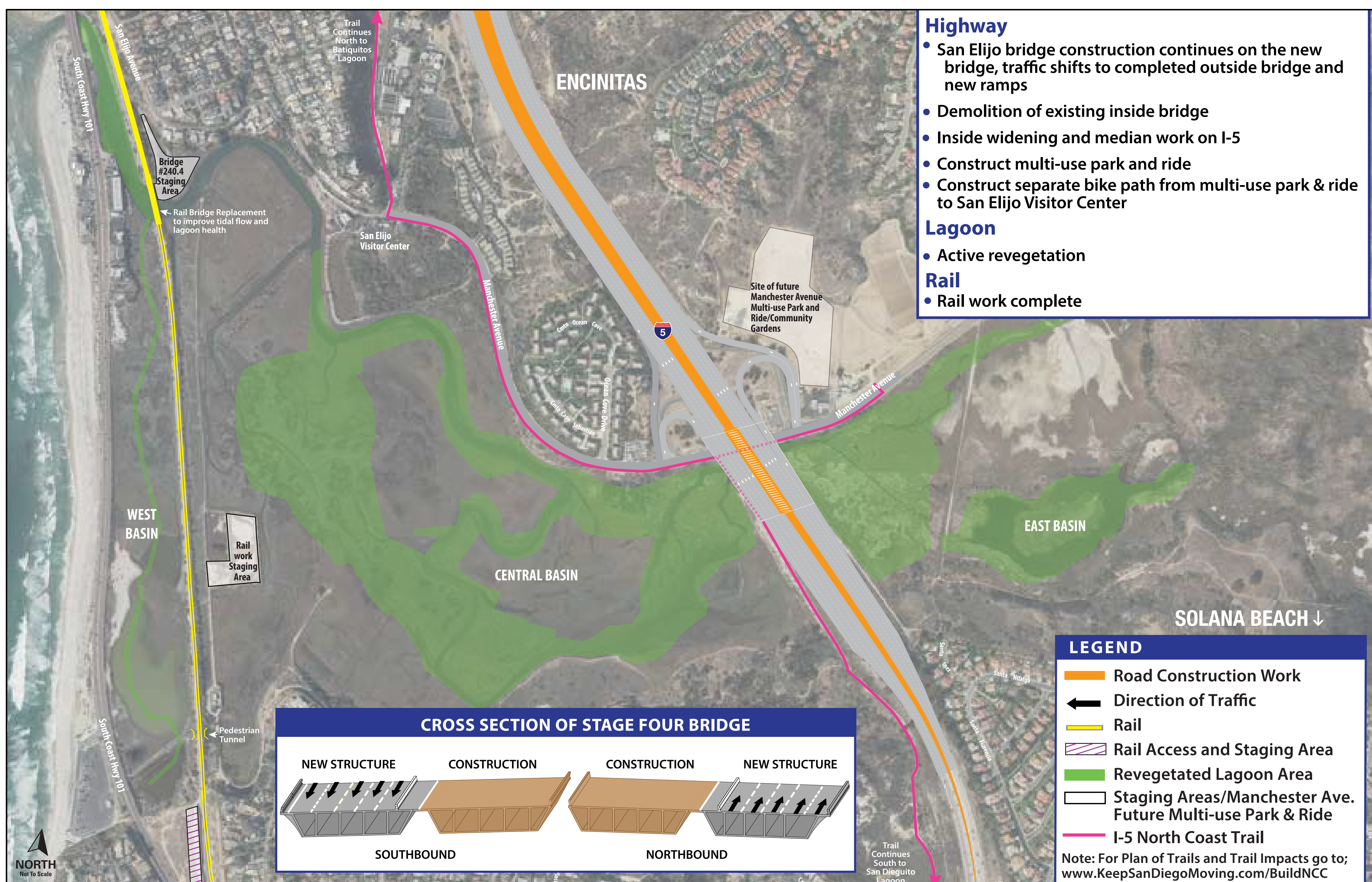




## Stage 3: 12 months



## Stage 4: 18 months









**Facility features will include:**

- 150 parking spaces (with dedicated recreational parking)
- Interpretive lagoon displays
- Class 1 bike trail connection
- Four electric vehicle charging stations
- Six acres of community gardens just north of Park & Ride/Multi-use Facility
- Planned construction timeline: begins early 2017; complete 2021



### SOUND WALL CONSTRUCTION DATES

-  2017 Sound Walls
-  2035 Sound Walls

### SOUND WALL DESIGNS

Transparent



Hybrid



Masonry

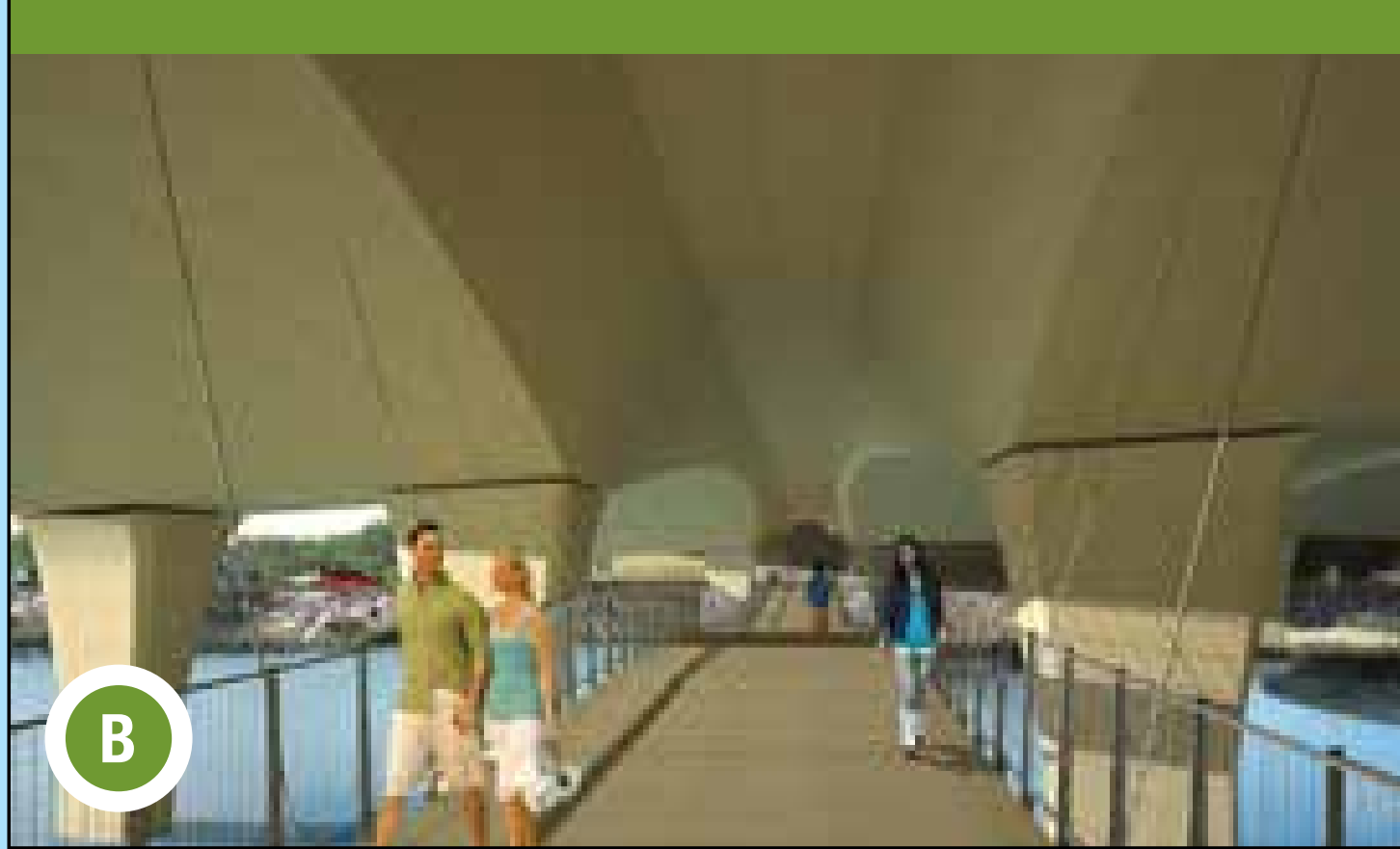




Encinitas Blvd./Santa Fe Dr.  
Bike/Pedestrian Enhancements



San Elijo Lagoon Bike/Pedestrian Bridge



Batiquitos Lagoon Bike/Pedestrian Bridge



North Coast Bike Trail



**LEGEND**

- Points of Interest
- Existing Bike/Ped Facilities
- Shared Roadway
- Dedicated North Coast (NC) Bike Trail
- Shared Roadway/ NC Bike Trail
- Dedicated Pedestrian Path
- New Rail Underpass
- Chesterfield Drive Rail Crossing Improvement
- Existing Pedestrian Path







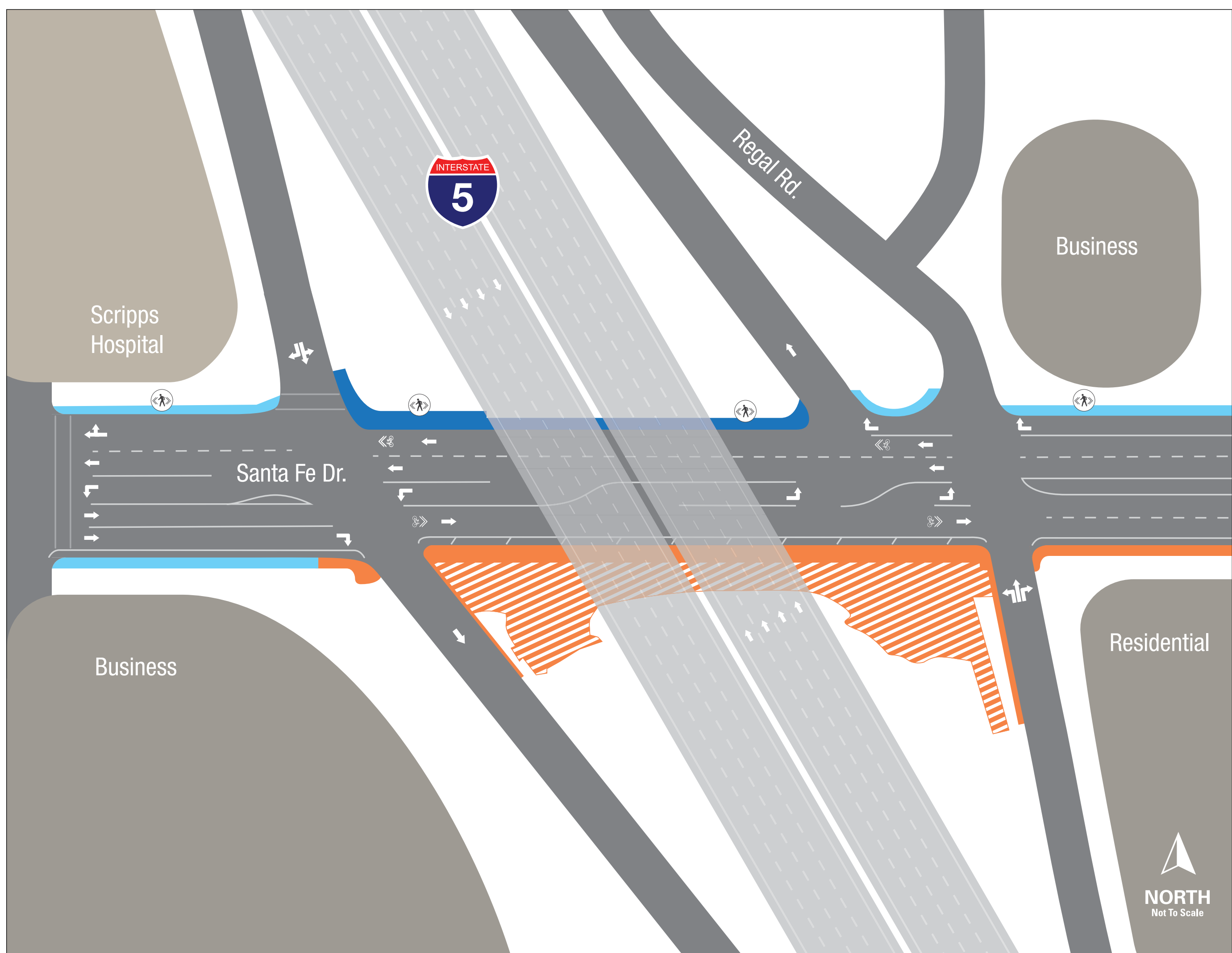
## Stage 1: 8 months

### EXISTING CONDITION



### LEGEND

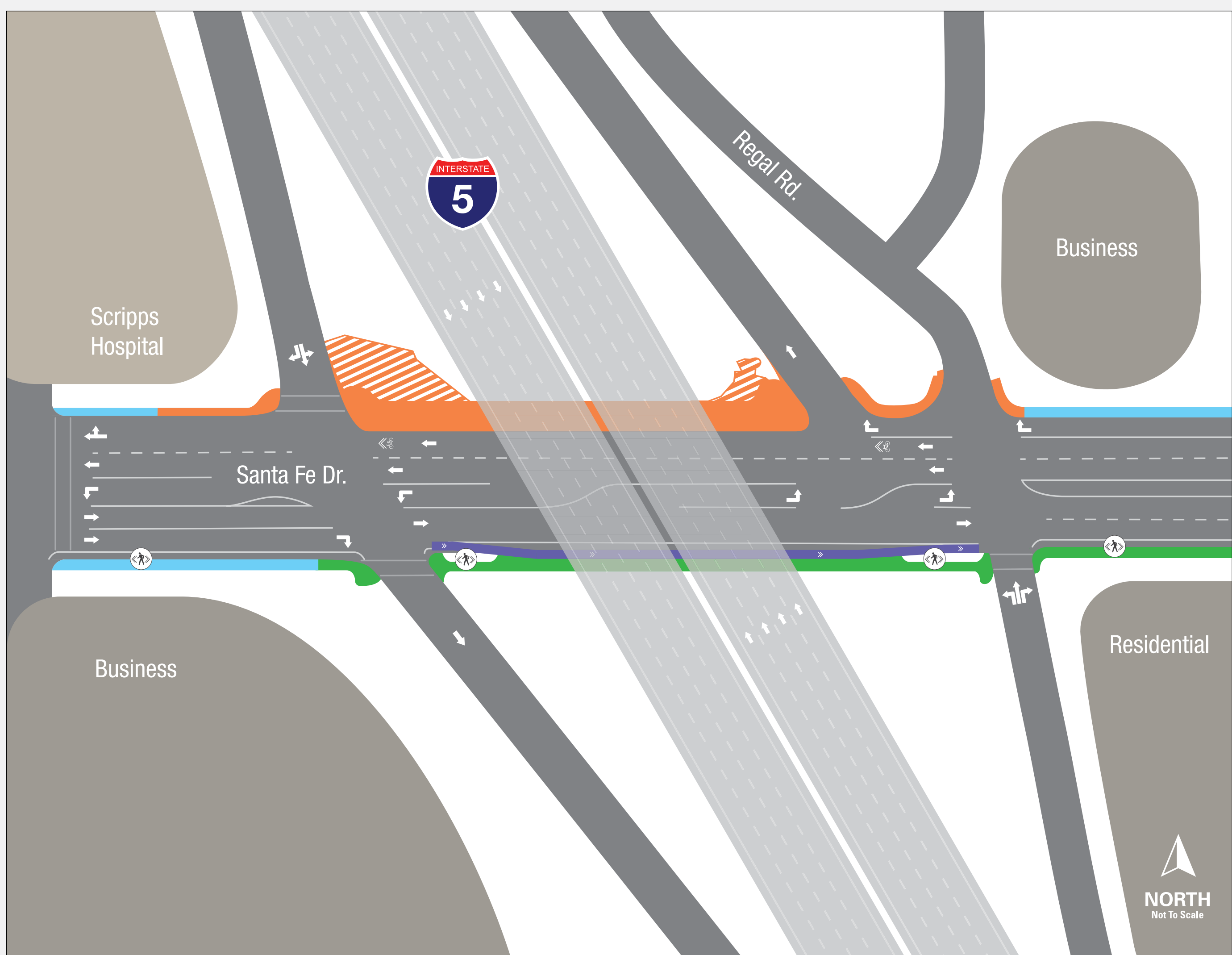
- █ Existing Sidewalk
- █ Temporary Pedestrian Path
- ← Direction of Traffic
- ⤴ Pedestrian Route
- █ Construction Work (No Pedestrian Access)
- █ Staging Area (No Pedestrian Access)
- ⤵ Direction of Bike Travel



## Stage 2: 8 months

### LEGEND

- █ Existing Sidewalk
- █ New Pedestrian Sidewalk
- █ New Bike Path
- ← Direction of Traffic
- █ Construction Work (No Pedestrian Access)
- █ Staging Area (No Pedestrian Access)
- ⤵ Direction of Bike Travel
- ⤴ Pedestrian Route

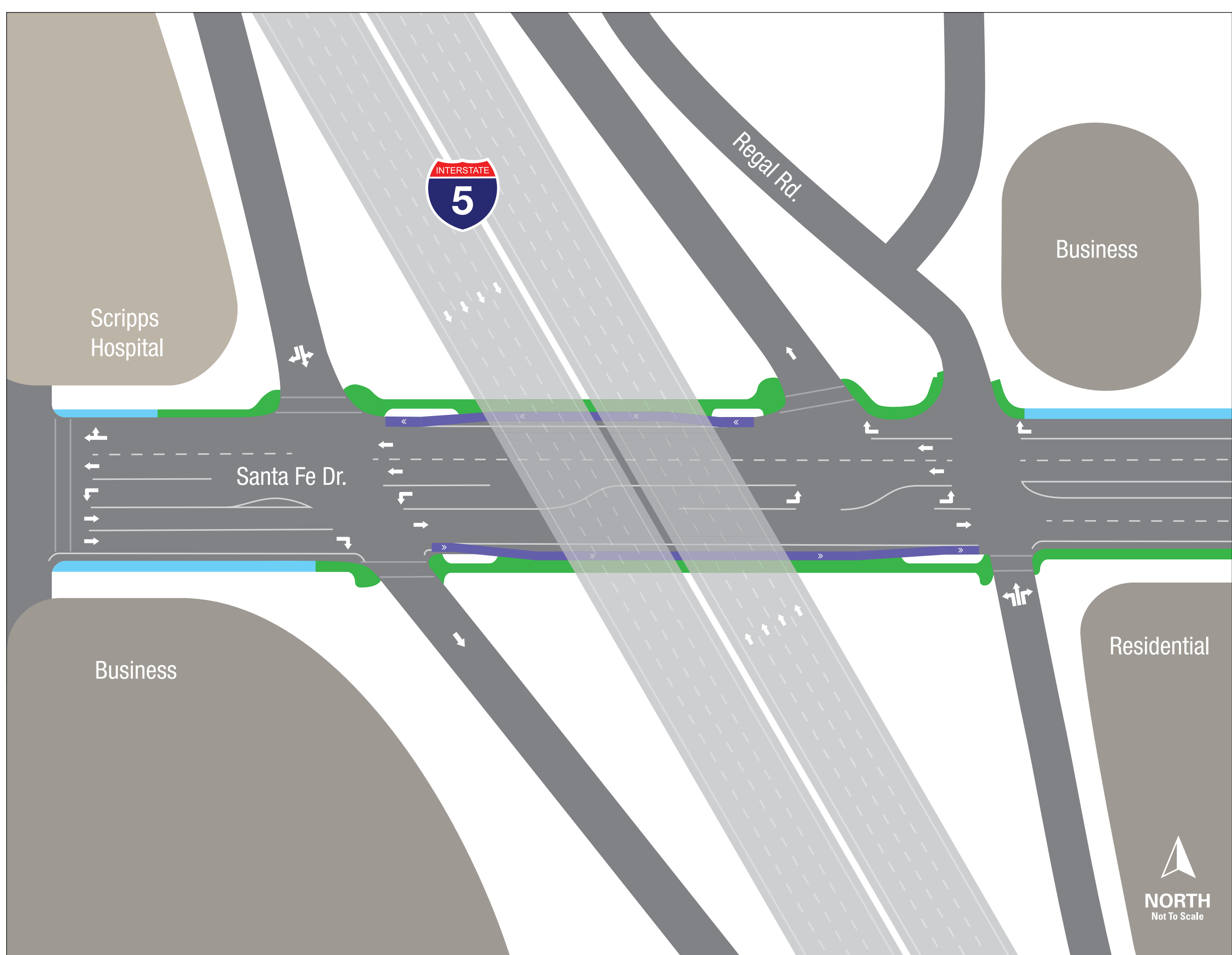


## Finished Condition



### LEGEND

- █ Existing Sidewalk
- █ New Pedestrian Sidewalk
- █ New Bike Path
- ← Direction of Traffic



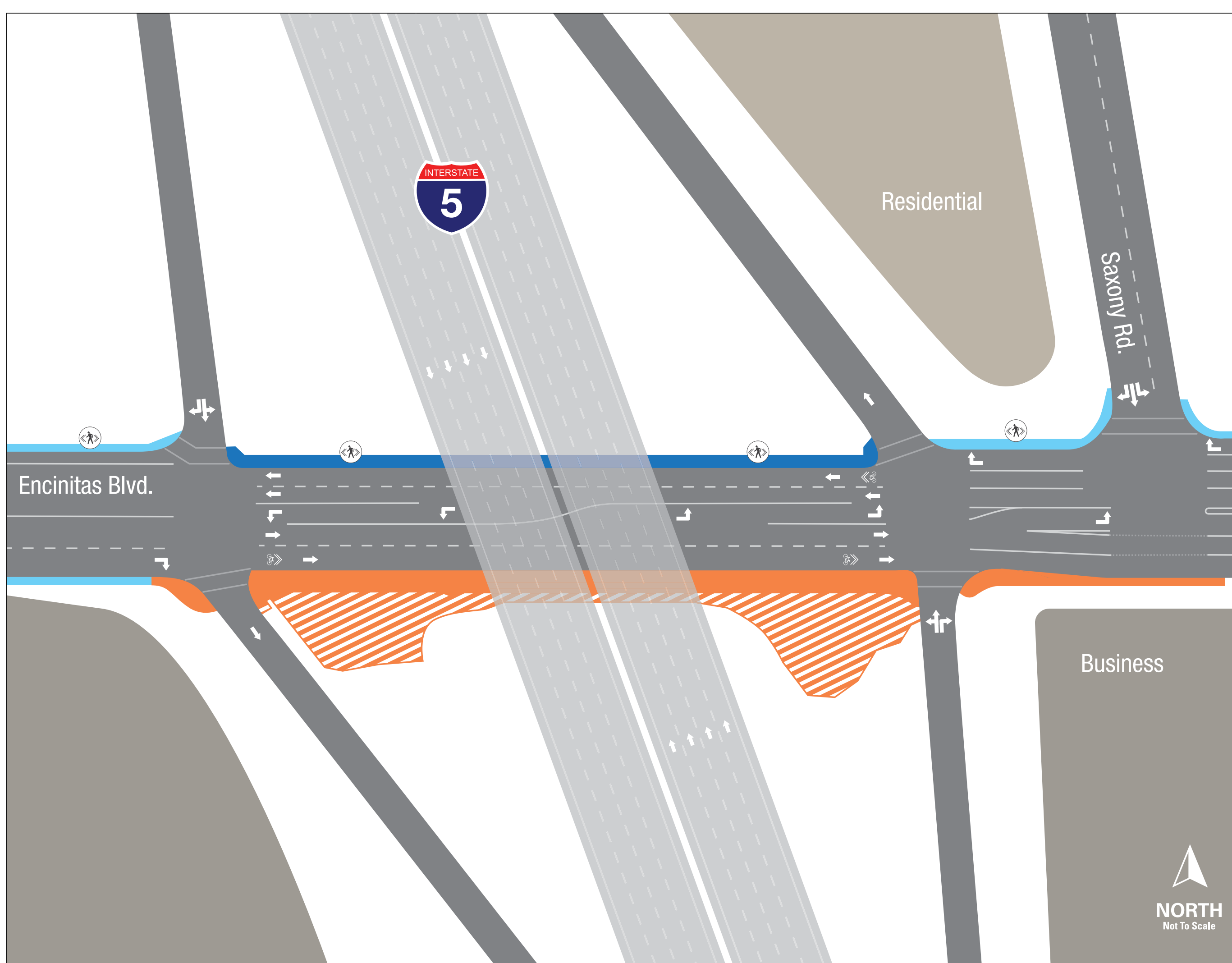


## Stage 1: 8 months

**EXISTING CONDITION**

**LEGEND**

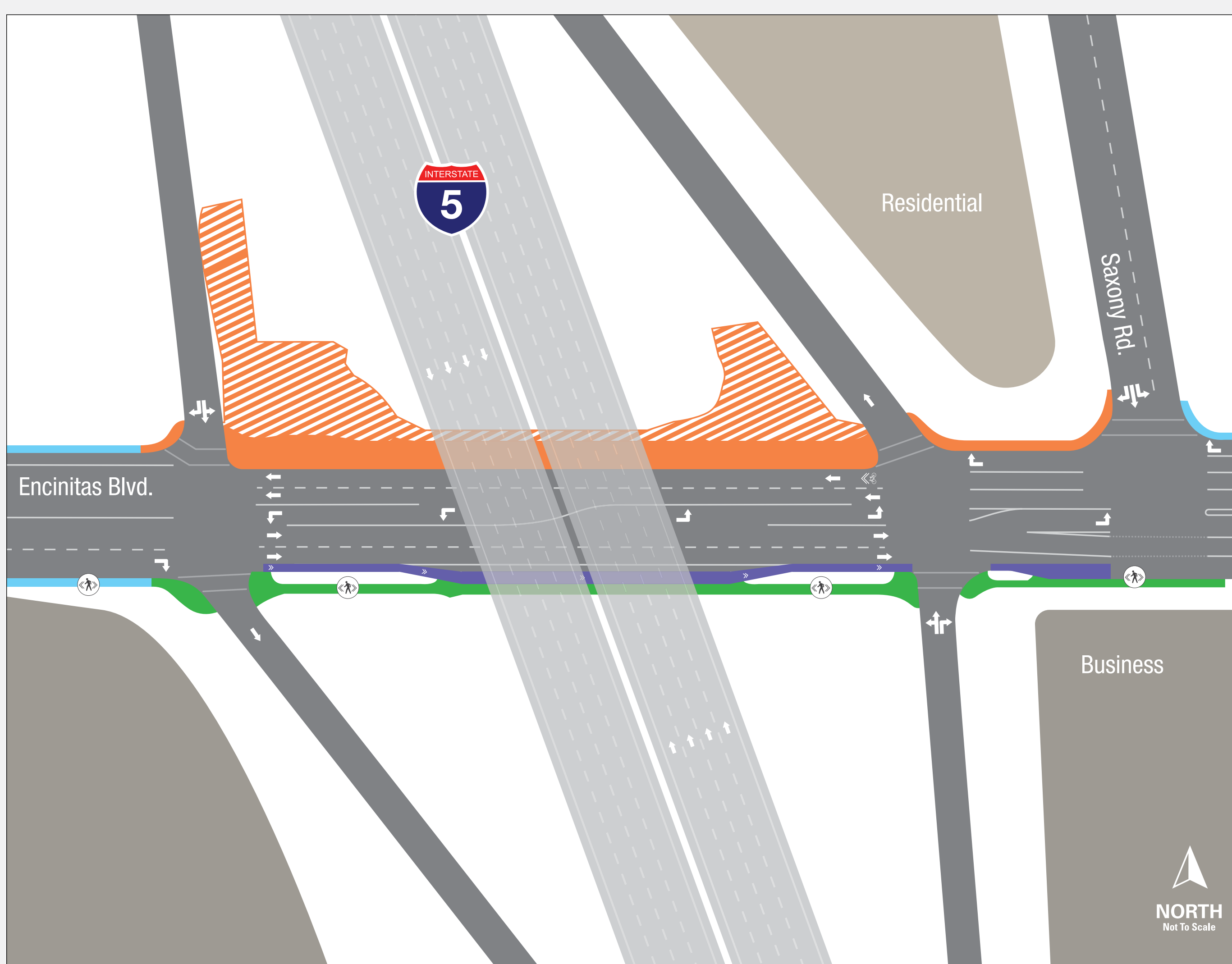
- Existing Sidewalk
- Temporary Pedestrian Path
- Direction of Traffic
- Pedestrian Route
- Construction Work (No Pedestrian Access)
- Staging Area (No Pedestrian Access)
- Direction of Bike Travel



## Stage 2: 8 months

**LEGEND**

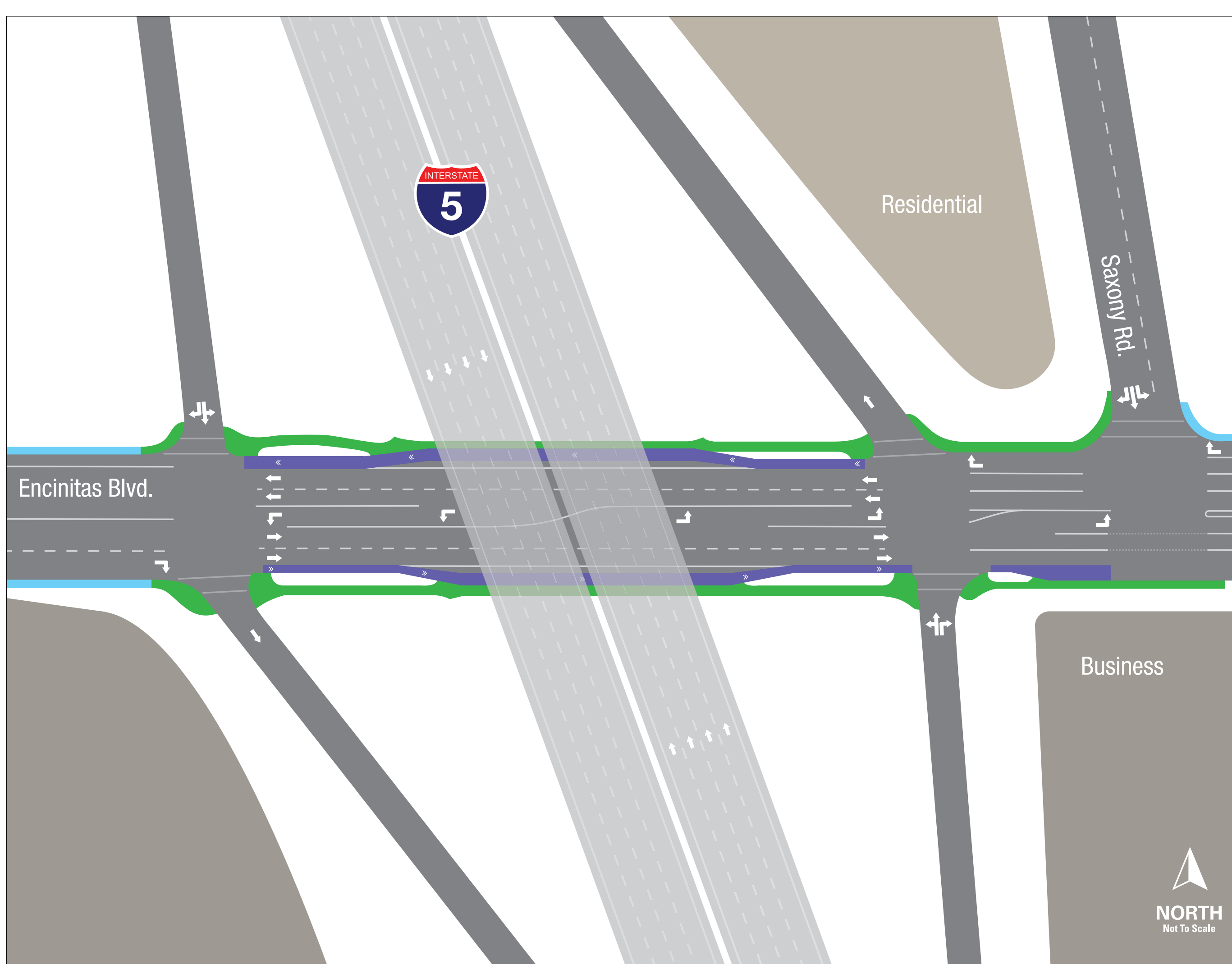
- Existing Sidewalk
- New Pedestrian Sidewalk
- New Bike Path
- Direction of Traffic
- Pedestrian Route
- Construction Work (No Pedestrian Access)
- Staging Area (No Pedestrian Access)
- Direction of Bike Travel



## Finished Condition

**LEGEND**

- Existing Sidewalk
- New Pedestrian Sidewalk
- New Bike Path
- Direction of Traffic





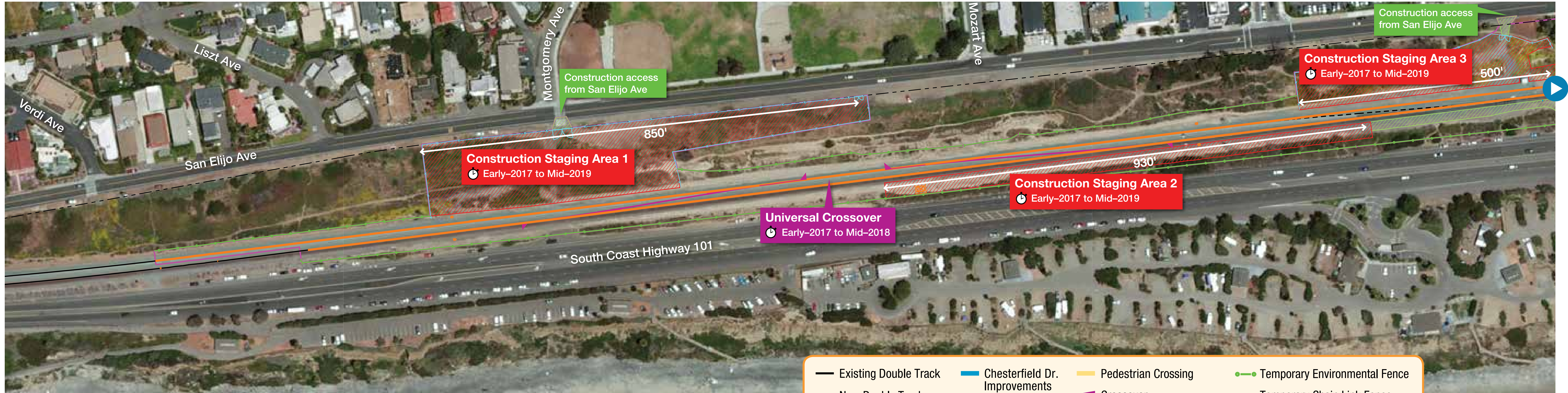
*Planned San Elijo Lagoon Double Track Rail Bridge*



*Existing San Elijo Lagoon Rail Bridge*



*Planned San Elijo Lagoon Double Track Rail Bridge*

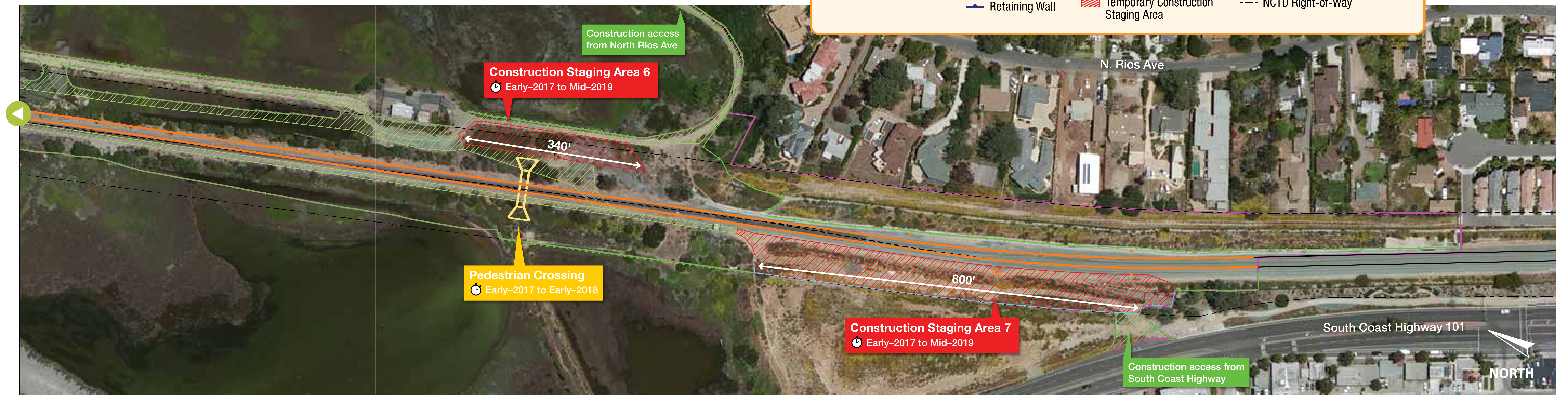


- Existing Double Track
- New Double Track
- - Existing Track to be Removed
- Chesterfield Dr. Improvements
- Rail Bridge Replacement
- Retaining Wall
- Pedestrian Crossing
- Crossover
- Temporary Access Road
- Temporary Construction Staging Area
- Temporary Environmental Fence
- Temporary Chain Link Fence
- Project Boundary
- - - NCTD Right-of-Way



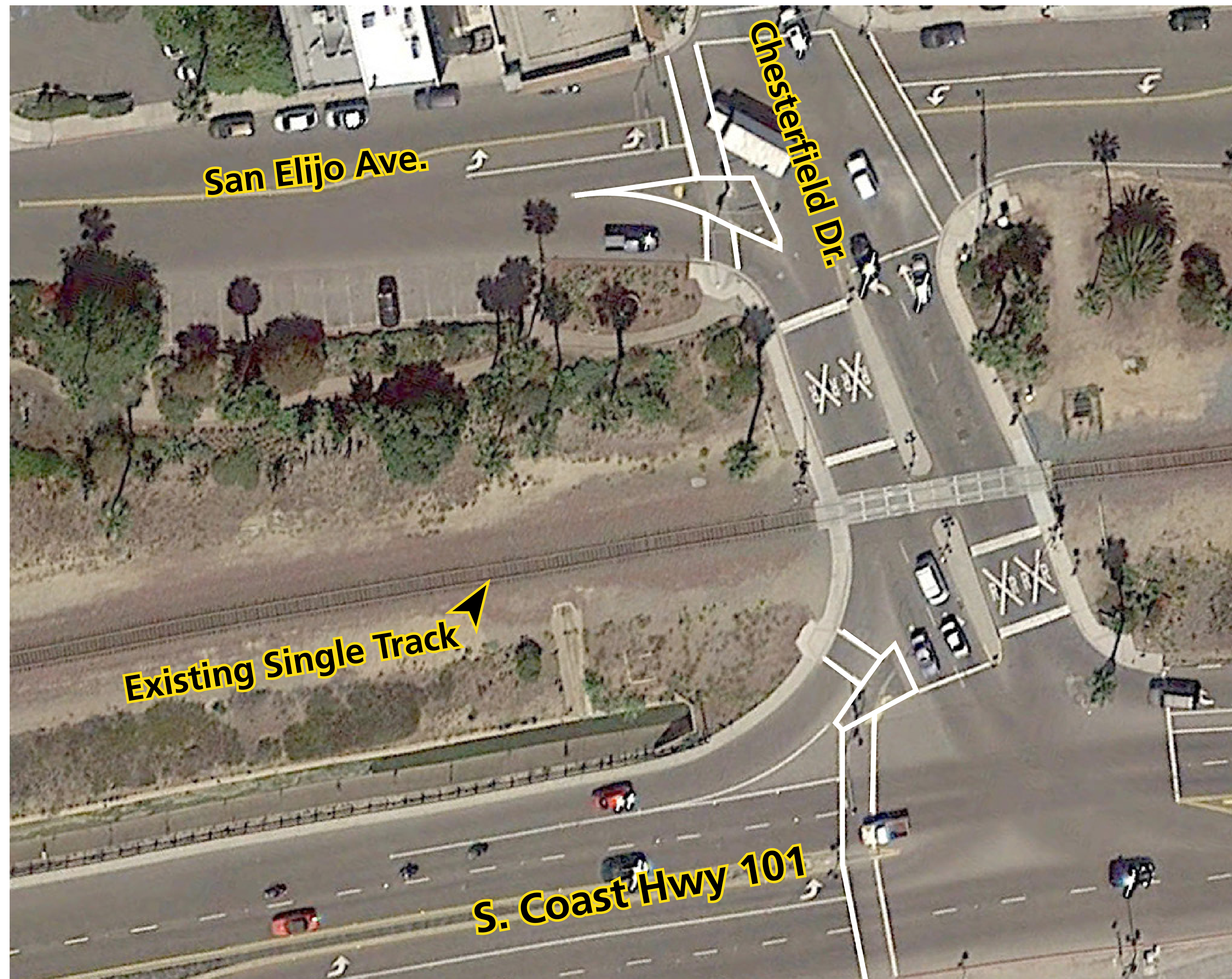


- Existing Double Track
- New Double Track
- - Existing Track to be Removed
- Chesterfield Dr. Improvements
- Rail Bridge Replacement
- Retaining Wall
- Pedestrian Crossing
- Crossover
- Temporary Access Road
- Temporary Construction Staging Area
- Temporary Environmental Fence
- Temporary Chain Link Fence
- Project Boundary
- - - NCTD Right-of-Way

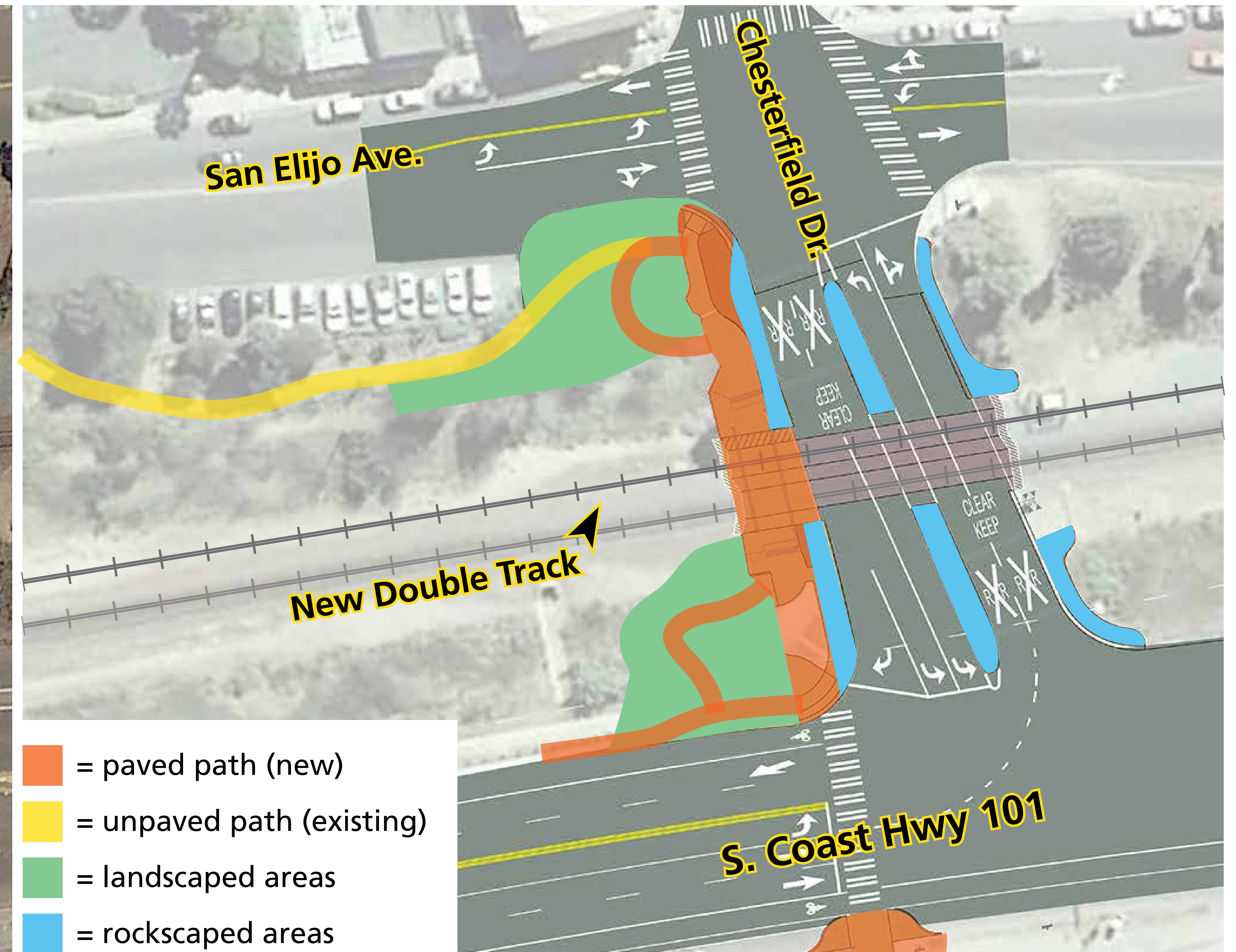




## Existing Conditions



## Planned Improvements



- Will improve safety and access at Chesterfield Drive for people on bikes and walking

- Includes new sidewalk curb extensions with an ADA accessible sidewalk, new rail crossing warning lights and gates, wider street medians, and improved signage

- Planned construction timeline: Begins early 2017; complete late 2018



## NIGHT WORK



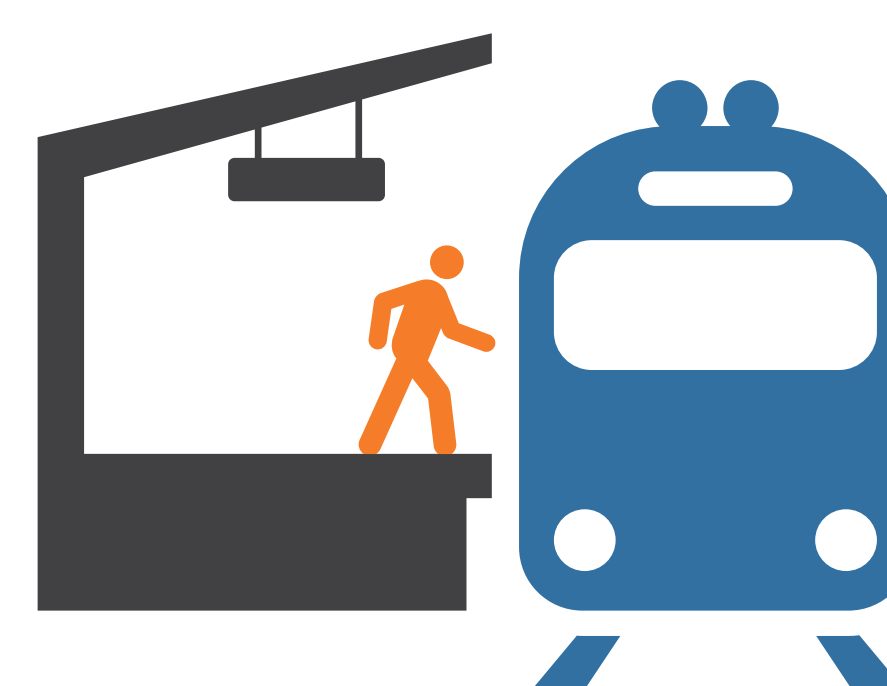
## DETOURS



## REDUCED LANE WIDTHS



## INTERMITTENT WEEKEND RAIL SERVICE INTERRUPTIONS



## RAMP CLOSURES



## CONSTRUCTION EQUIPMENT





**Construction crews will take all reasonable steps to minimize impacts to important coastal environmental resources, neighboring communities, and businesses. Mitigation measures include:**

- No lane closures during the day
- Reducing truck movement through local streets
- Minimizing nighttime construction lighting and noise, when feasible
- Safeguarding construction materials near sensitive habitats
- Installing noise barriers around some construction equipment
- Reducing bridge pile driving with an advanced construction method
- Providing 24 hour, 7 day a week Freeway Service Patrol (FSP)\* assistance to help get stranded motorists back on the highway

*\*To request assistance from the FSP in San Diego County, call 511 and say "Roadside Assistance." If you are experiencing an emergency, please dial 911.*



# Connect With Us During Construction

Caltrans and SANDAG are committed to minimizing impacts and keeping communities informed during construction.



Sign up for updates at  
[KeepSanDiegoMoving.com/BuildNCC](http://KeepSanDiegoMoving.com/BuildNCC)



Email us at  
[BuildNCC@KeepSanDiegoMoving.com](mailto:BuildNCC@KeepSanDiegoMoving.com)



Call **(844) NCC-0050**



Text **BuildNCC** to **313131**  
to receive construction alerts



Follow us **@BuildNCC** | **@SDCaltrans**



Like us at  
**SANDAGregion** | **CaltransDistrict11**

