

Build NCC

NORTH COAST CORRIDOR BICYCLE & PEDESTRIAN PROJECTS

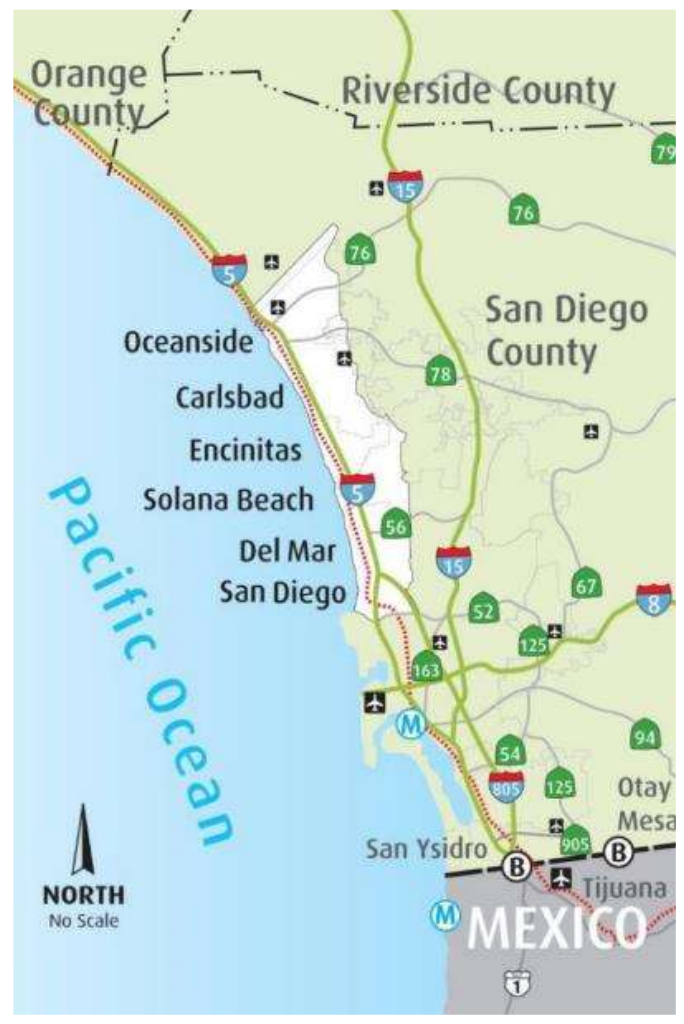
Bike Walk Encinitas

Encinitas Bike and Pedestrian Committee

October 7, 2019



NORTH COAST CORRIDOR



MASTER IMPLEMENTATION BLUEPRINT



North Coast Corridor Program
Highway, rail, transit, environmental protection and coastal access improvements

Highway Improvements



Coastal Rail and Transit



Environmental Protection & Coastal Access



27-Mile Express Lane System



Complete LOSSAN Double Track (initially 50%)



30 Miles of Bike/Ped Paths



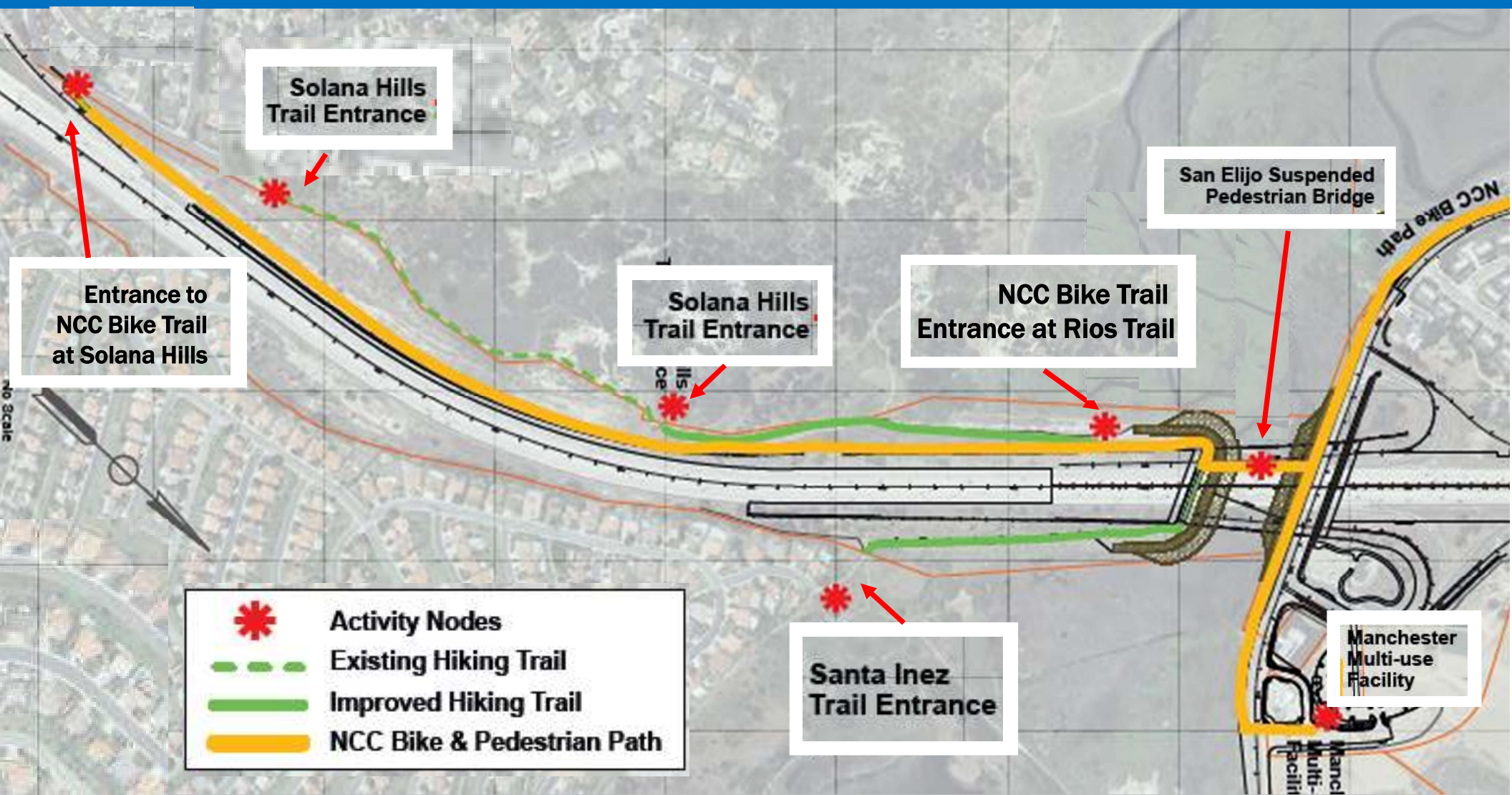
1200+ Acres of Restored/Preserved Habitat

PHASE ONE

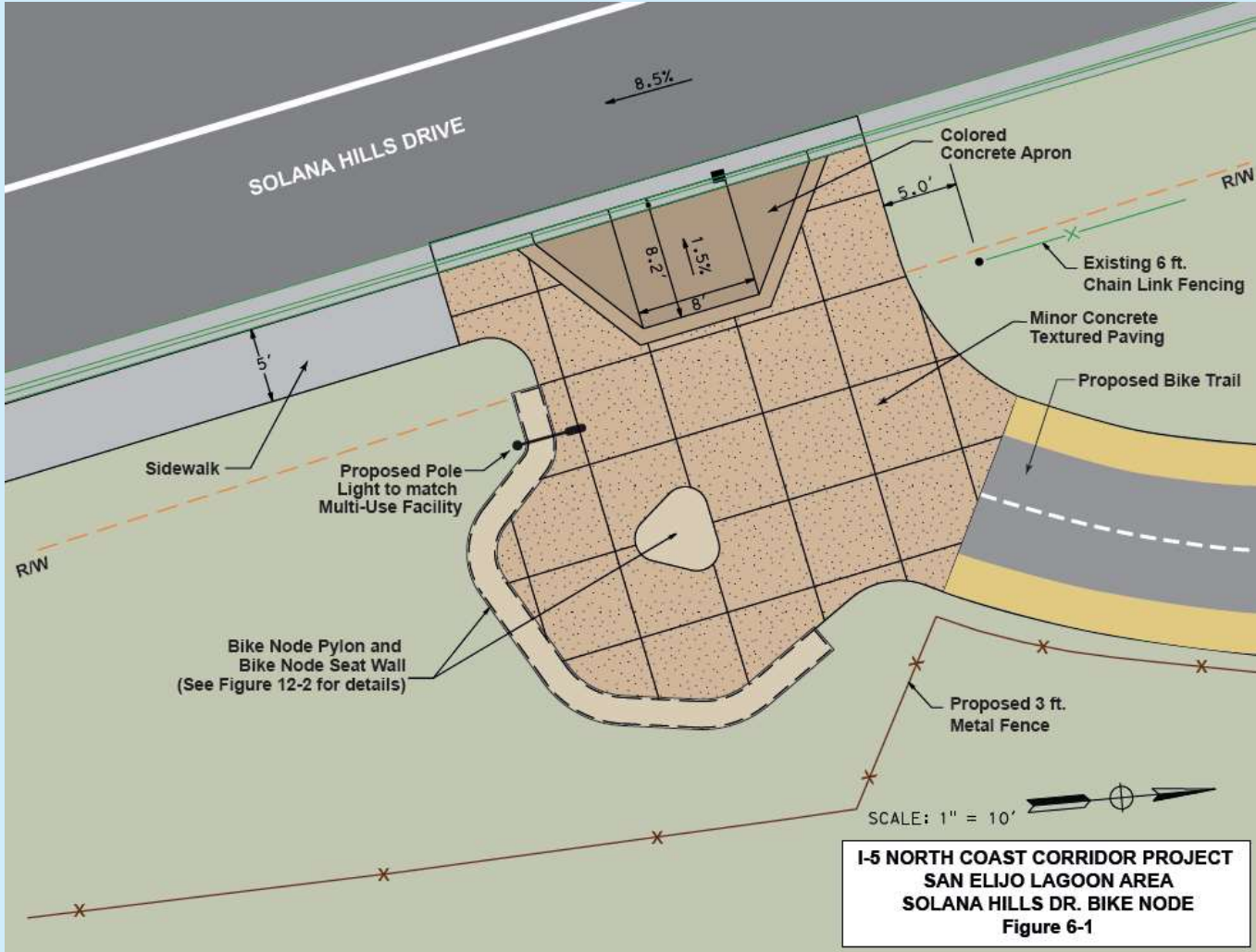
Under Construction

2017 - 2022

NORTH COAST BIKE TRAIL – UNDER CONSTRUCTION



NORTH COAST BIKE TRAIL (BIKE NODE AT SOLANA HILLS DRIVE) - UNDER CONSTRUCTION



SAN ELIJO LAGOON HIGHWAY BRIDGE – UNDER CONSTRUCTION



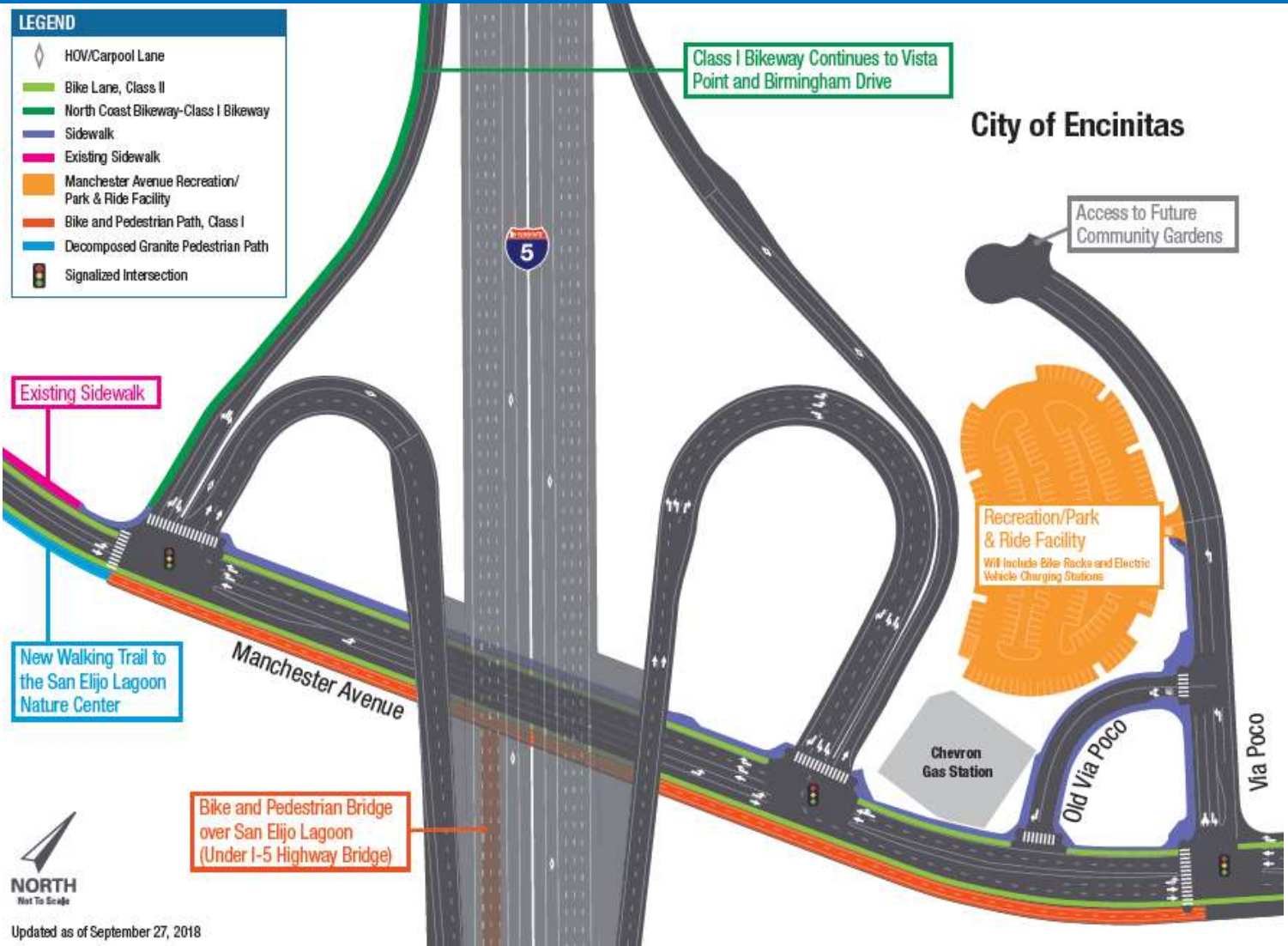
Visual simulation of the final San Elijo Lagoon Highway Bridge with suspended bike/pedestrian bridge

SAN ELIJO LAGOON HIGHWAY BRIDGE – UNDER CONSTRUCTION



Visual simulation of south side of the future San Elijo Lagoon Highway Bridge

I-5 / MANCHESTER AVE INTERCHANGE IMPROVEMENTS – UNDER CONSTRUCTION



NORTH COAST BIKE TRAIL – UNDER CONSTRUCTION



Class I Bikeway along Manchester Avenue, east of the southbound I-5 on/off-ramps (City of Encinitas)

NORTH COAST BIKE TRAIL – UNDER CONSTRUCTION



Class II Bikeway along Manchester Avenue, west of the southbound I-5 on/off-ramps (City of Encinitas)

NORTH COAST BIKE TRAIL – UNDER CONSTRUCTION

- LEGEND**
- 12' wide Multi-Use Trail in State R/W (asphalt concrete)
 - 8'-10' wide Multi-Use Trail by Others
 - 6' wide Class II Bike Lane at Manchester (both directions)
 - 8' wide Pedestrian Trail to San Elijo Lagoon Visitor Center
 - City Street Bike Route (signage only)
 - 12' wide Multi-Use Trail by Stage 1, Phase 1
 - Caltrans' Right-of-Way



I-5 North Coast Corridor Phase 1, Stages 2 & 3
 from Manchester Avenue to La Costa Avenue

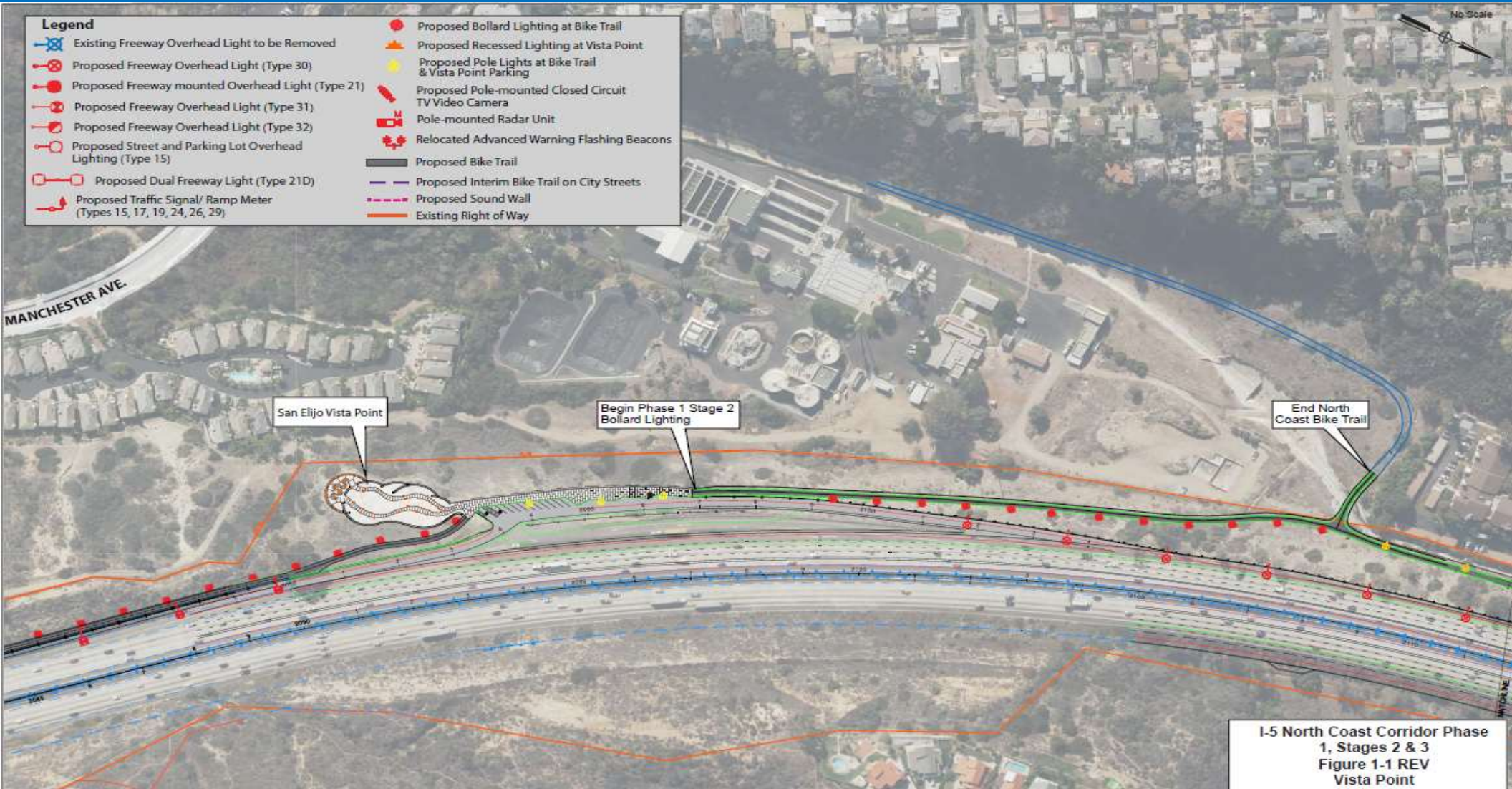
NORTH COAST BIKE TRAIL – UNDER CONSTRUCTION



Protected Class I Bikeway along the southbound Manchester Avenue off-ramp

NORTH COAST BIKE TRAIL – UNDER CONSTRUCTION

- Legend**
- Existing Freeway Overhead Light to be Removed
 - Proposed Freeway Overhead Light (Type 30)
 - Proposed Freeway mounted Overhead Light (Type 21)
 - Proposed Freeway Overhead Light (Type 31)
 - Proposed Freeway Overhead Light (Type 32)
 - Proposed Street and Parking Lot Overhead Lighting (Type 15)
 - Proposed Dual Freeway Light (Type 21D)
 - Proposed Traffic Signal/ Ramp Meter (Types 15, 17, 19, 24, 26, 29)
 - Proposed Bollard Lighting at Bike Trail
 - Proposed Recessed Lighting at Vista Point
 - Proposed Pole Lights at Bike Trail & Vista Point Parking
 - Proposed Pole-mounted Closed Circuit TV Video Camera
 - Pole-mounted Radar Unit
 - Relocated Advanced Warning Flashing Beacons
 - Proposed Bike Trail
 - Proposed Interim Bike Trail on City Streets
 - Proposed Sound Wall
 - Existing Right of Way



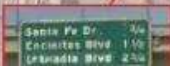
I-5 North Coast Corridor Phase 1, Stages 2 & 3
Figure 1-1 REV
Vista Point

NORTH COAST BIKE TRAIL – UNDER CONSTRUCTION

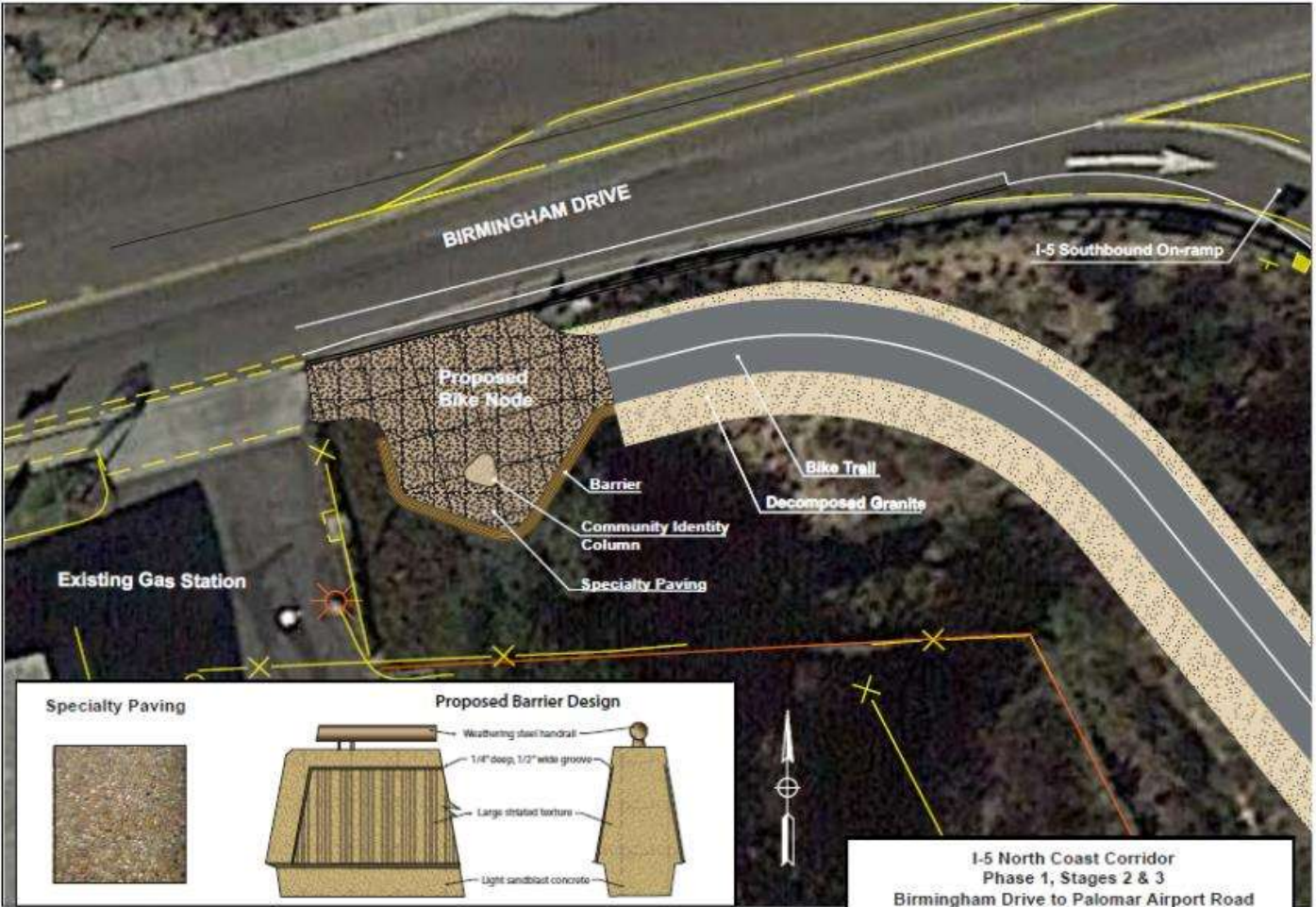
- Legend**
- Existing Freeway Overhead Light to be Removed
 - Proposed Freeway Overhead Light (Type 30)
 - Proposed Freeway mounted Overhead Light (Type 21)
 - Proposed Freeway Overhead Light (Type 31)
 - Proposed Freeway Overhead Light (Type 32)
 - Proposed Street and Parking Lot Overhead Lighting (Type 15)
 - Proposed Dual Freeway Light (Type 21D)
 - Key View of Photosimulation
 - Proposed Bike Trail Lights
 - Proposed Traffic Signal/ Ramp Meter (Types 15, 17, 19, 24, 26, 29)
 - Proposed Pole-mounted Closed Circuit TV Video Camera
 - Pole-mounted Radar Unit
 - Relocated Advanced Warning Flashing Beacons
 - Proposed Bike Trail
 - Proposed Interim Bike Trail on City Streets
 - Proposed Sound Wall
 - Existing Right of Way



North Coast Bike Trail Node
See Figure 5-2

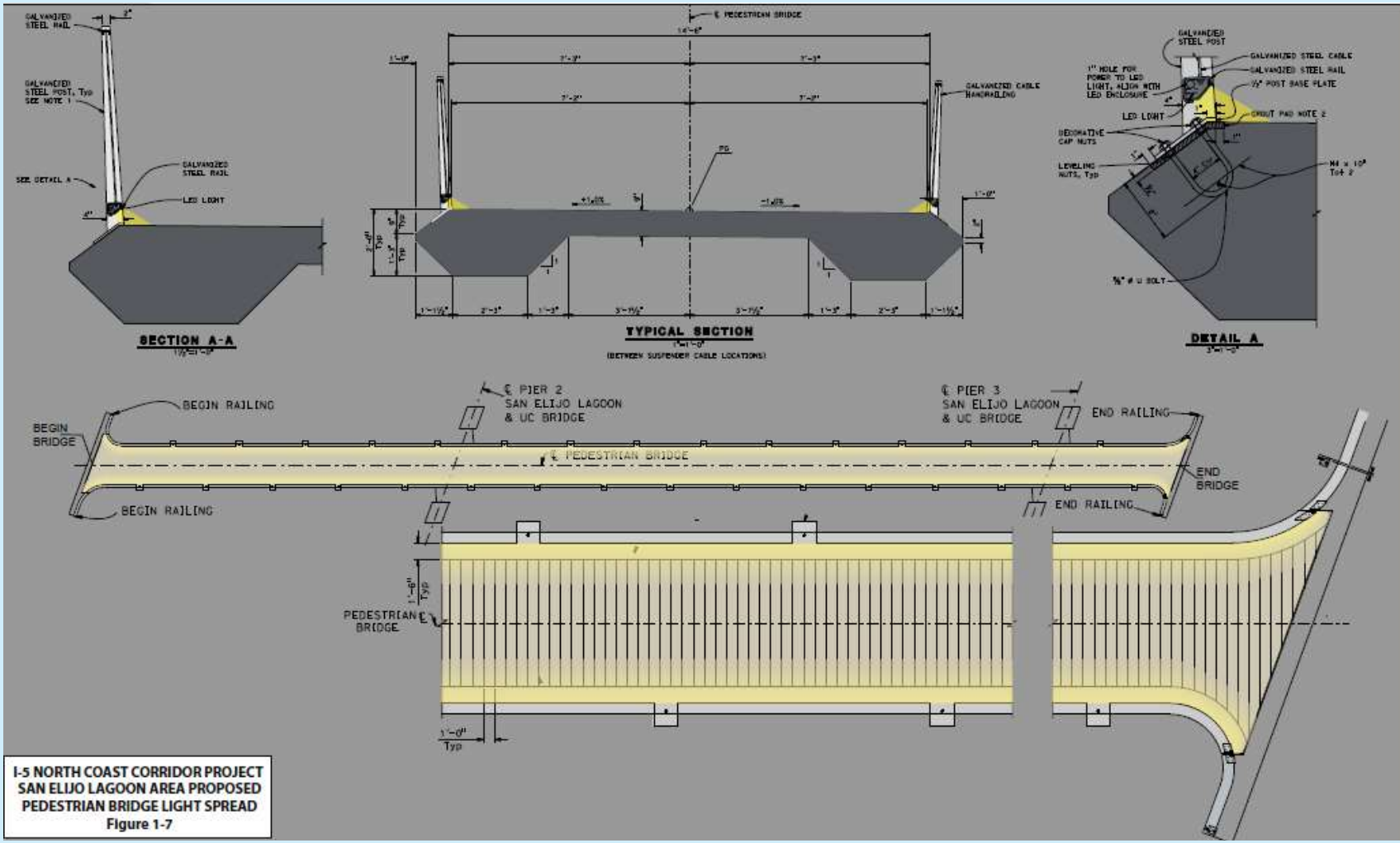


NORTH COAST BIKE TRAIL (BIKE NODE AT BIRMINGHAM) - UNDER CONSTRUCTION



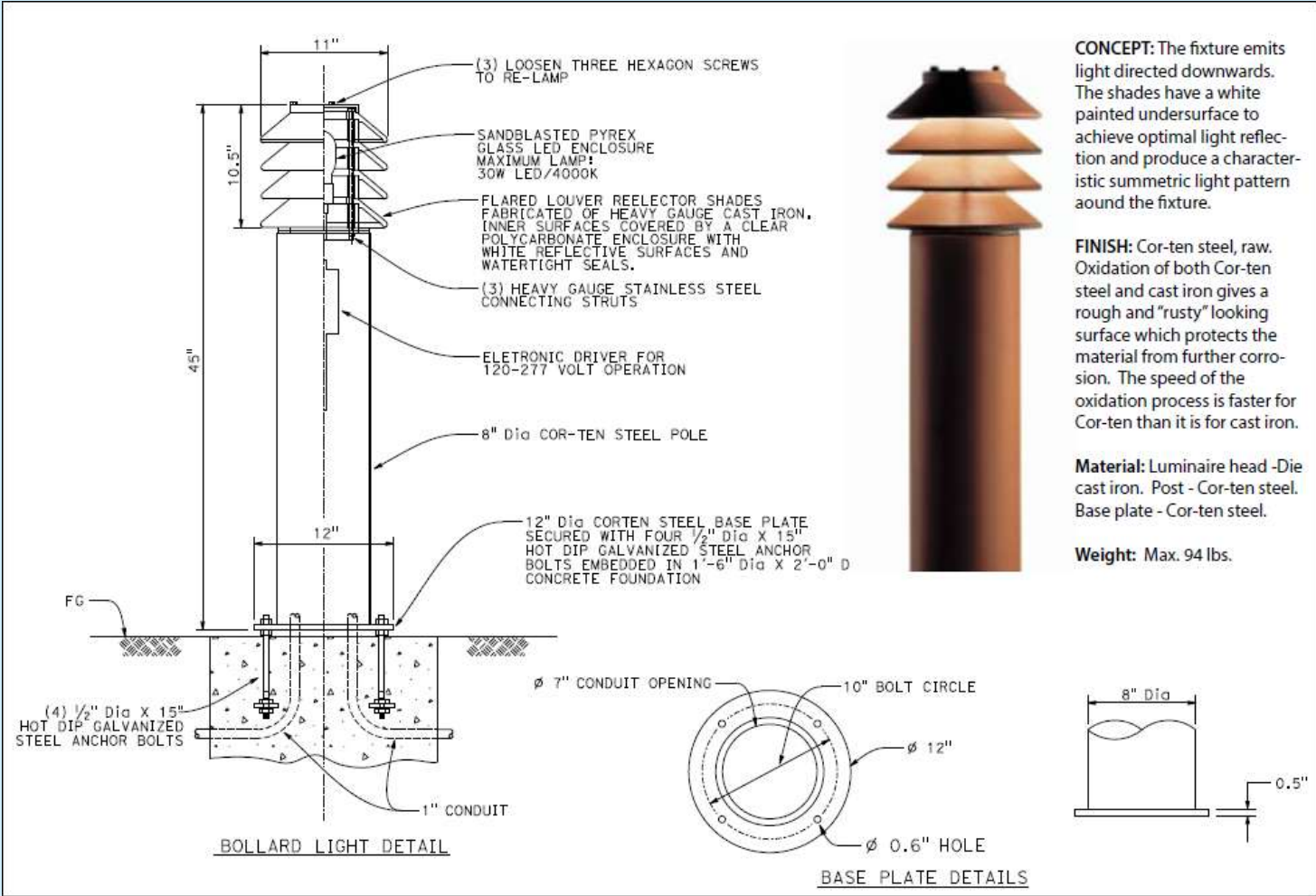
I-5 North Coast Corridor
Phase 1, Stages 2 & 3
Birmingham Drive to Palomar Airport Road
HOV Project
Proposed Birmingham Drive Bike Node
Figure 4

NORTH COAST BIKE TRAIL (LIGHTING ON BRIDGE) - UNDER CONSTRUCTION



I-5 NORTH COAST CORRIDOR PROJECT
 SAN ELIJO LAGOON AREA PROPOSED
 PEDESTRIAN BRIDGE LIGHT SPREAD
 Figure 1-7

NORTH COAST BIKE TRAIL (LIGHTING) – UNDER CONSTRUCTION



CONCEPT: The fixture emits light directed downwards. The shades have a white painted undersurface to achieve optimal light reflection and produce a characteristic symmetric light pattern around the fixture.

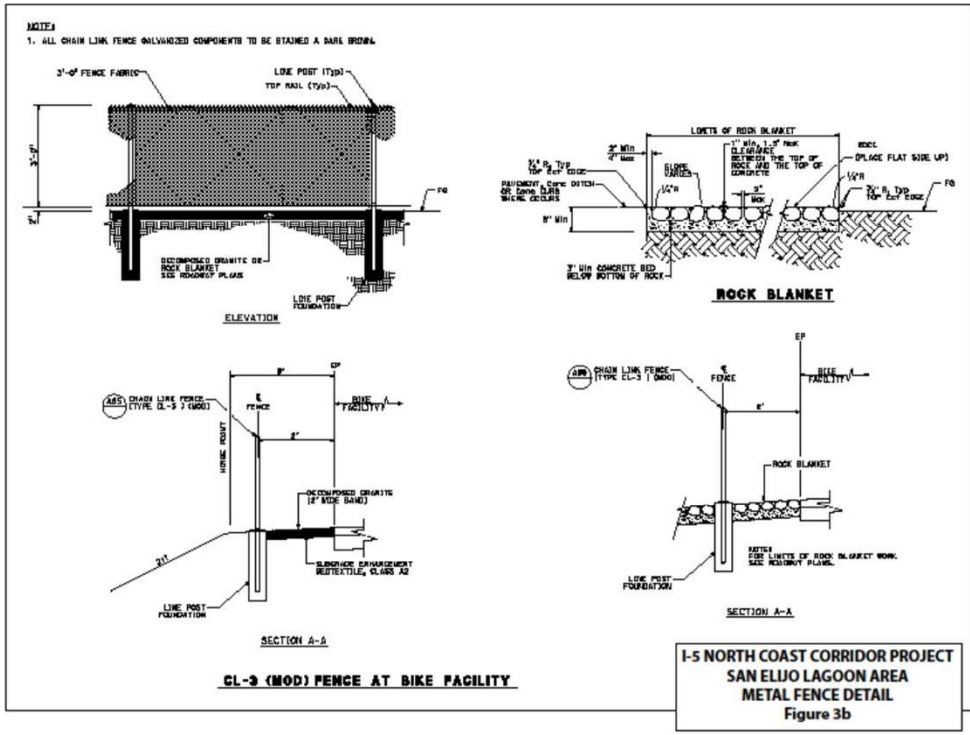
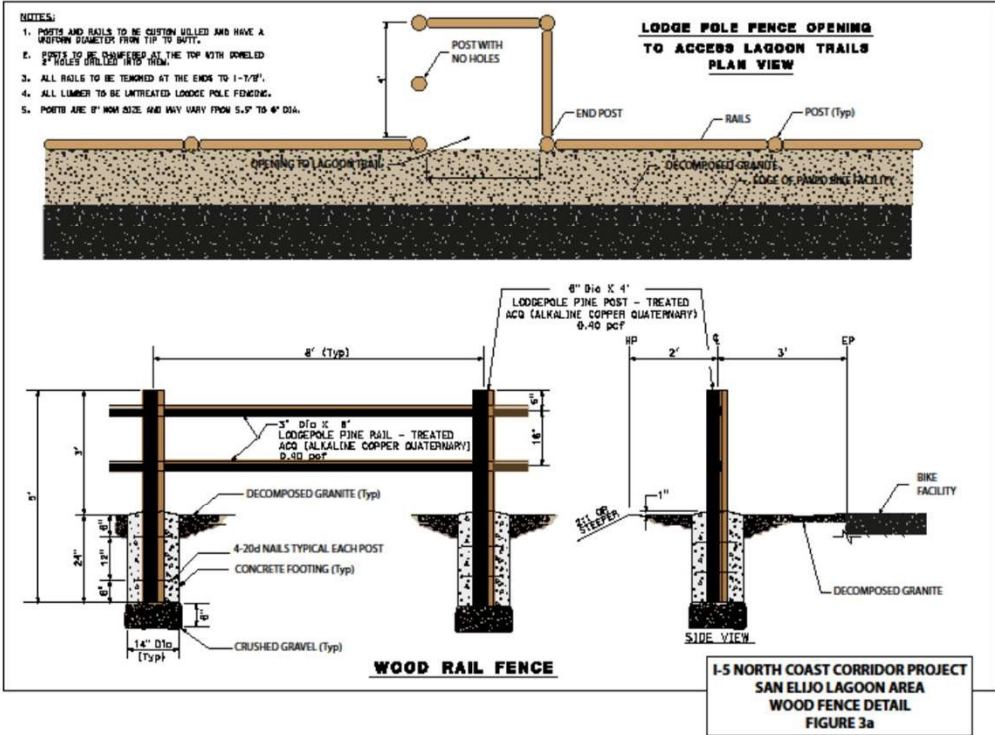
FINISH: Cor-ten steel, raw. Oxidation of both Cor-ten steel and cast iron gives a rough and "rusty" looking surface which protects the material from further corrosion. The speed of the oxidation process is faster for Cor-ten than it is for cast iron.

Material: Luminaire head -Die cast iron. Post - Cor-ten steel. Base plate - Cor-ten steel.

Weight: Max. 94 lbs.

Figure 1c
Bike Path Bollard Lighting

NORTH COAST BIKE TRAIL (FENCING) - UNDER CONSTRUCTION

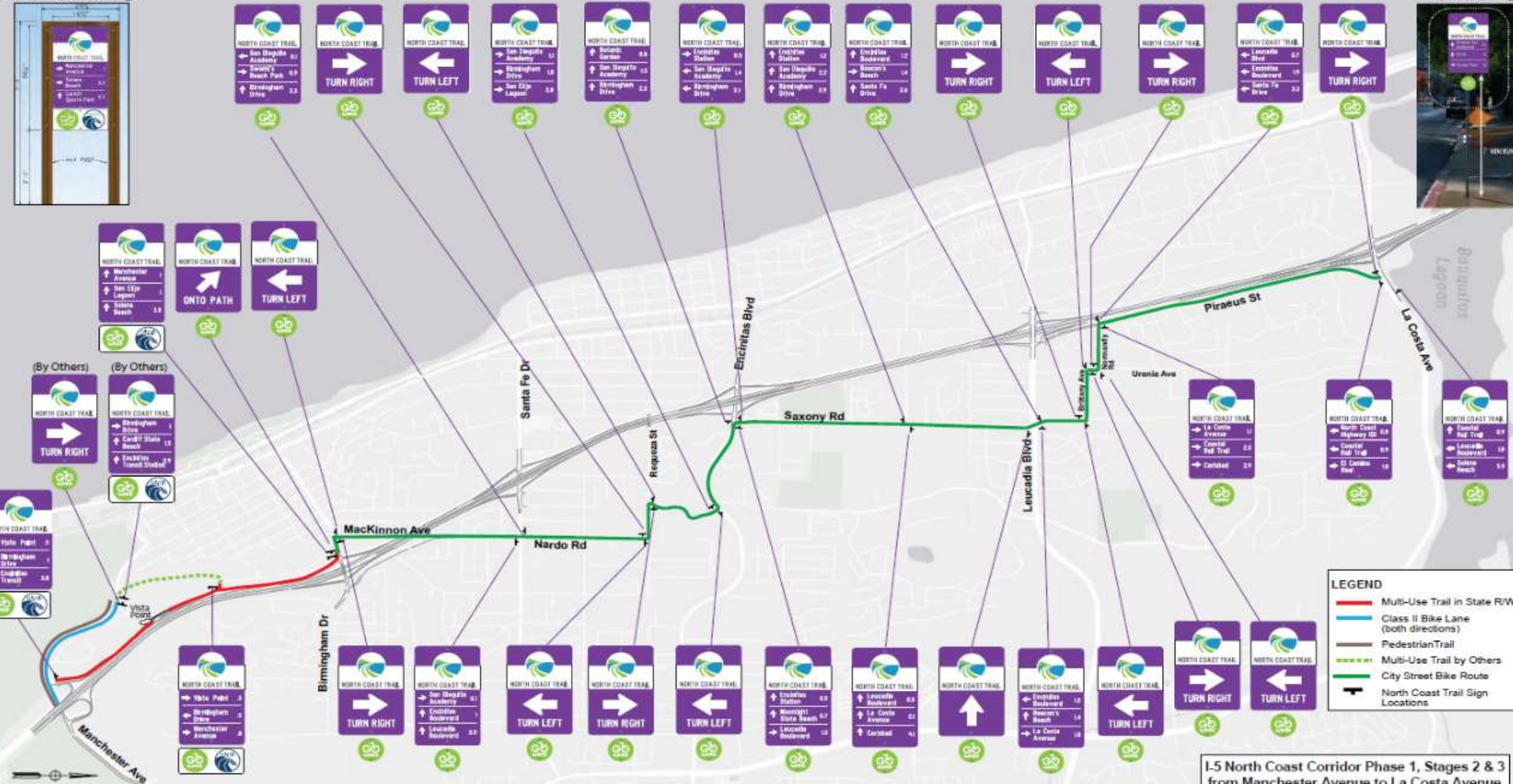


NORTH COAST BIKE TRAIL - UNDER CONSTRUCTION

North Coast Trail Sign



City Street Sign



I-5 North Coast Corridor Phase 1, Stages 2 & 3 from Manchester Avenue to La Costa Avenue

BIKE AND PEDESTRIAN COMMUNITY ENHANCEMENTS – UNDER CONSTRUCTION



GENESEE AVENUE BIKE IMPROVEMENTS - COMPLETED

Connecting Mission Bay to Carmel Valley Filling Gaps in Our Regional Bike Network



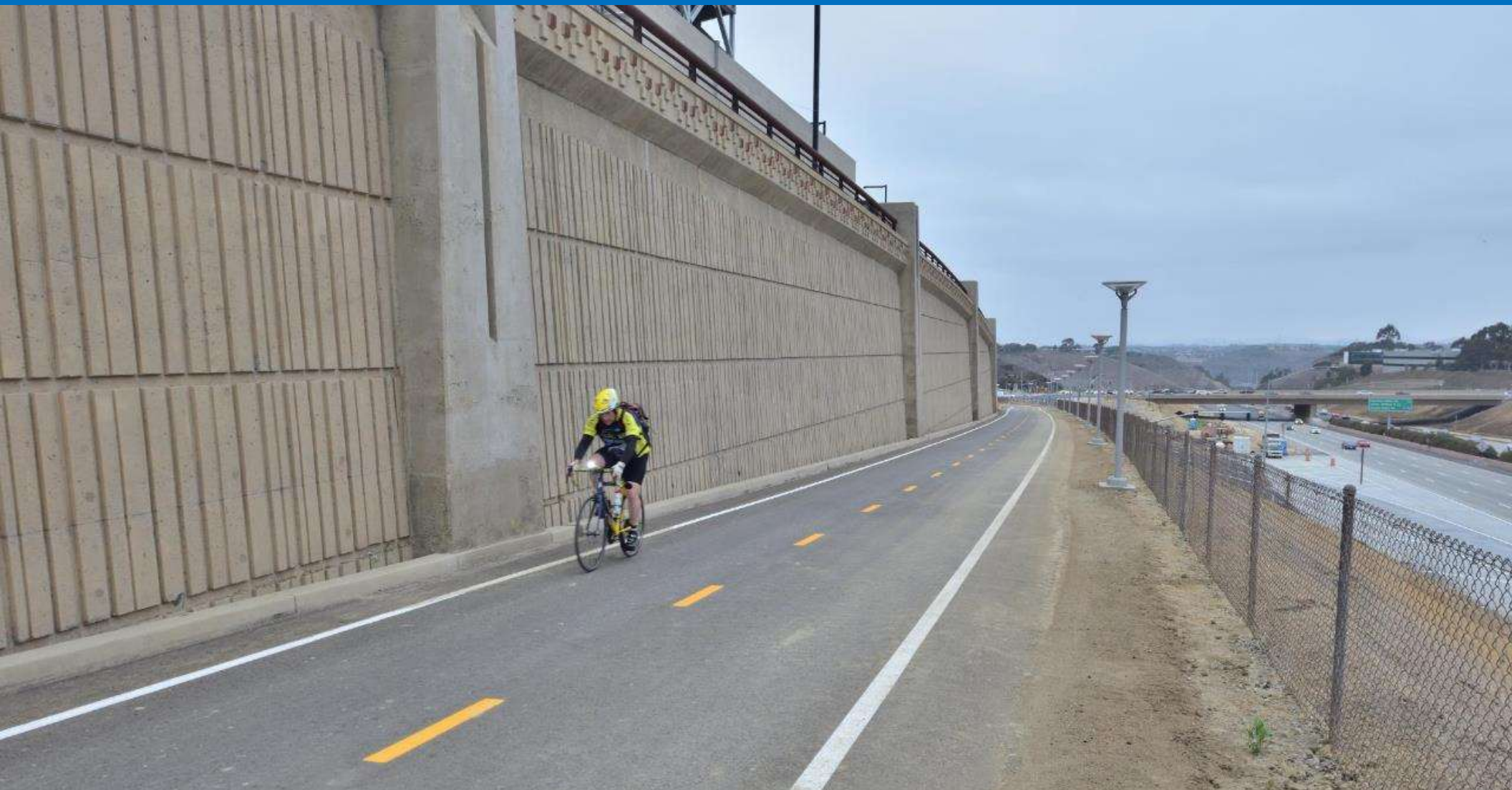
- Legend**
- Coastal Rail Trail Bikeway
 - North Coast Corridor Bikeway

- The 1.5 mile I-5/Genesee section of the bikeway is critical to linking the full stretch of bikeways between Mission Bay and SR 56.
- Opening Today
 - Existing Bikeway
 - Future Bikeway (2020)
 - Future Bike Trail Under I-5 (2021)
 - Existing Train Station
 - Future Trolley Stop (2021)

GENESEE AVENUE BIKE IMPROVEMENTS - COMPLETED



GENESEE AVENUE BIKE IMPROVEMENTS - COMPLETED



COASTAL RAIL TRAIL ENCINITAS - COMPLETED



I-5/SR-56 BIKE IMPROVEMENTS



CARMEL VALLEY BICYCLE/PEDESTRIAN CONNECTION

I-5/SR-56 BIKE IMPROVEMENTS

NOTES:

- DIMENSIONS OF THE PAVEMENT STRUCTURES (STRUCTURAL SECTIONS) ARE SUBJECT TO TOLERANCES SPECIFIED IN THE STANDARD SPECIFICATIONS.
- SUPERELEVATIONS ARE SHOWN ON THE SUPERELEVATION DIAGRAMS.
- FOR EXACT LOCATIONS AND TYPES OF CONCRETE BARRIER, CURB, DITCHES, FENCE, ROCK SLOPE PROTECTION, WALLS, DIKE, HSC, AND GUARD RAILING, SEE LAYOUT SHEETS AND SUMMARY OF QUANTITIES SHEETS.
- FOR RETAINING WALL DETAILS, SEE RETAINING WALL AND STRUCTURE PLANS.
- ALL HOT MIXED ASPHALT SURFACES MUST BE FOG SEALED EXCEPT TRAVELED WAYS AND DETOURS.
- SEE LAYOUT SHEETS FOR AREAS TO COLD PLANE.

LEGEND:

PAVEMENT CLIMATE REGION:

SOUTH COAST

DESIGN DESIGNATION:

ADT (2006) = N/A D = N/A
 ADT (2030) = N/A T = N/A
 DHV = N/A V = N/A
 ESAL = N/A

DIST	COUNTY	ROUTE	POST MILES TOTAL PROJECT	SHEET NO.	TOTAL SHEETS
11	SD	5	R32.6/R32.9		

REGISTERED CIVIL ENGINEER DATE

0-0-00

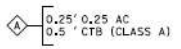
PLANS APPROVAL DATE

THE STATE OF CALIFORNIA ON ITS OFFICERS OR AGENTS SHALL NOT BE RESPONSIBLE FOR THE ACCURACY OR COMPLETENESS OF SCANNED COPIES OF THIS PLAN SHEET.

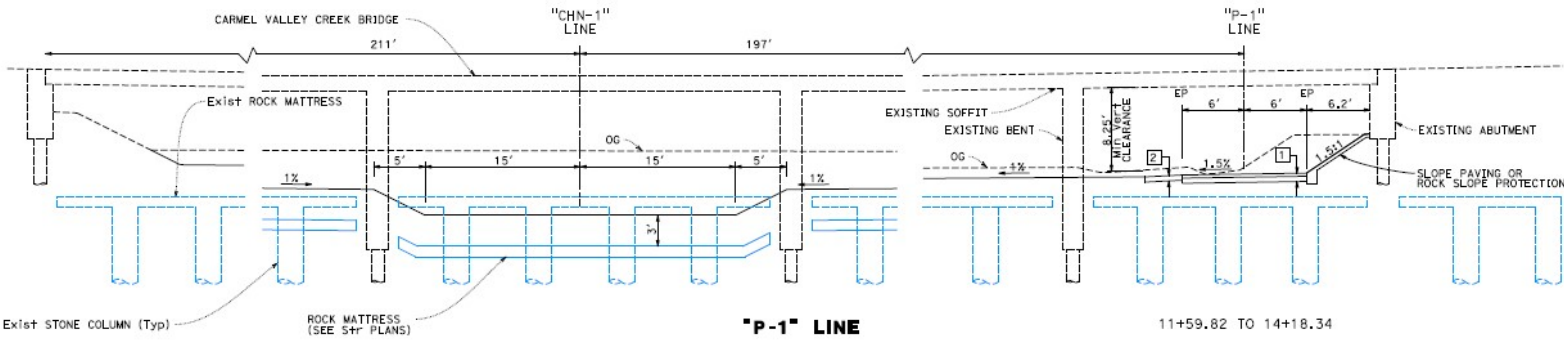
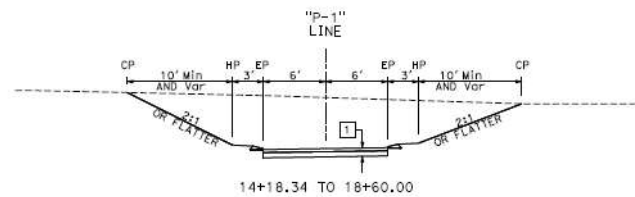
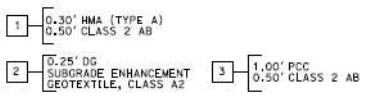
The City of **SAN DIEGO**

Build NCC

EXISTING STRUCTURAL SECTIONS



TYPICAL PAVEMENT STRUCTURAL SECTIONS



TYPICAL CROSS SECTIONS

NO SCALE

PHASE TWO

Estimated Construction
2035

NORTH COAST BIKE TRAIL – SOLANA BEACH/ENCINITAS ALIGNMENT



11-SD-5
 KP R54.9/R87.9
 11-235800

NORTH COAST BIKEWAY



NO SCALE
 SHEET 4 OF 10

NORTH COAST BIKE TRAIL – ENCINITAS ALIGNMENT



11-50-5
 KP R54.9/R87.9
 11-235800


I-5 NORTH COAST BIKE TRAIL



NO SCALE
 SHEET 5 OF 10

NORTH COAST BIKE TRAIL – ENCINITAS/CARLSBAD ALIGNMENT





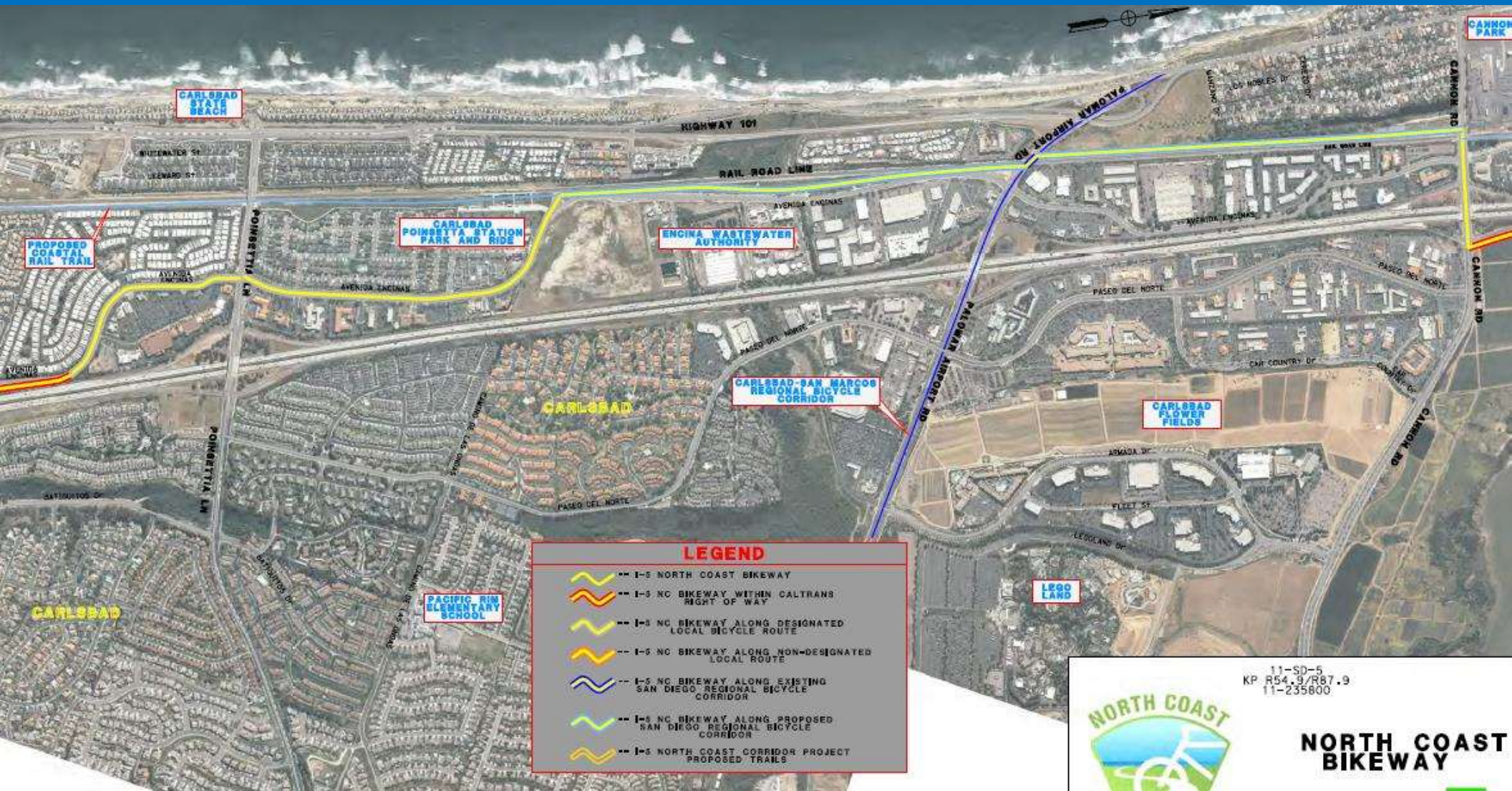
**NORTH COAST
BIKE TRAIL**

11-SD-5
KP R54.9/R87.9
11-235800

**I-5 NORTH COAST
BIKE TRAIL**

NO SCALE
SHEET 6 OF 10

NORTH COAST BIKE TRAIL – CARLSBAD ALIGNMENT



LEGEND

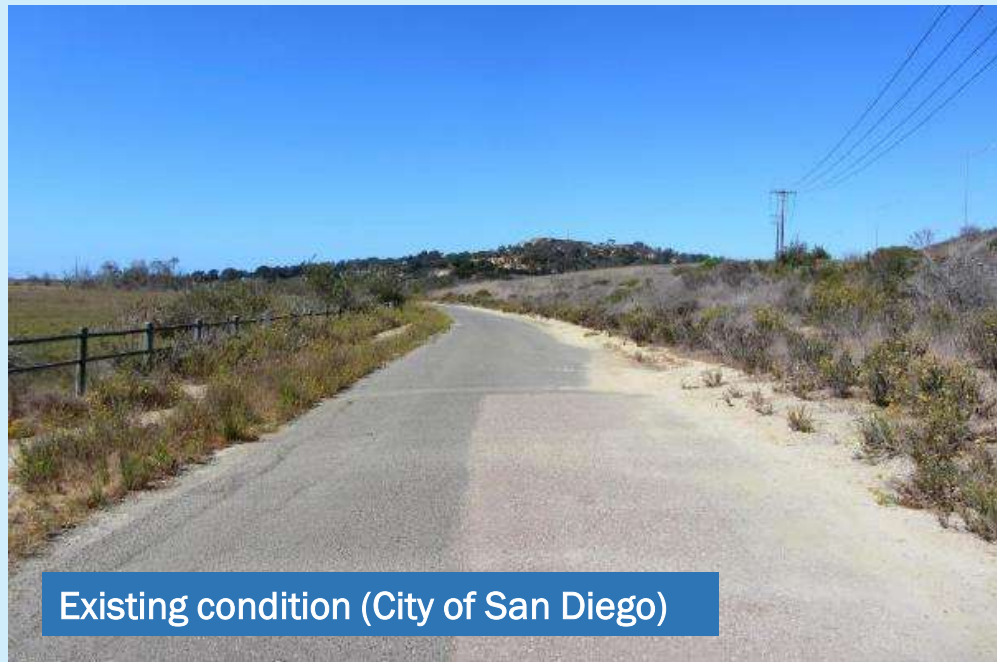
- I-5 NORTH COAST BIKEWAY
- I-5 NC BIKEWAY WITHIN CALTRANS RIGHT OF WAY
- I-5 NC BIKEWAY ALONG DESIGNATED LOCAL BICYCLE ROUTE
- I-5 NC BIKEWAY ALONG NON-DESIGNATED LOCAL ROUTE
- I-5 NC BIKEWAY ALONG EXISTING SAN DIEGO REGIONAL BICYCLE CORRIDOR
- I-5 NC BIKEWAY ALONG PROPOSED SAN DIEGO REGIONAL BICYCLE CORRIDOR
- I-5 NORTH COAST CORRIDOR PROJECT PROPOSED TRAILS



11-SD-5
 KP R54.9/R87.9
 11-235800

NORTH COAST BIKEWAY

OLD SORRENTO VALLEY ROAD BIKE TRAIL IMPROVEMENTS

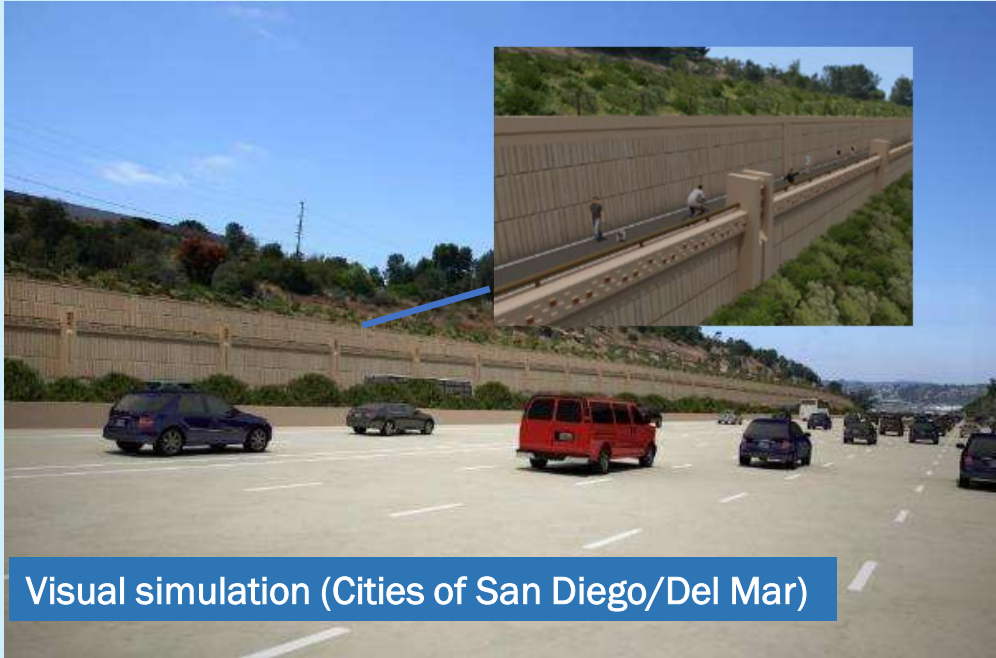


Existing condition (City of San Diego)



Visual simulation (City of San Diego)

NORTH COAST BIKE TRAIL (NEAR DEL MAR HEIGHTS ROAD)



NORTH COAST BIKE TRAIL (OVER THE SAN DIEGUITO LAGOON)



MACKINNON AVENUE BRIDGE REPLACEMENT



Visual simulation (City of Encinitas)

MACKINNON AVENUE ROUNDABOUT



Visual simulation on west side of I-5 at roundabout near Encinitas Community Park

NEW UNION STREET BIKE/PEDESTRIAN OVERPASS



Existing condition (City of Encinitas)



Visual simulation (City of Encinitas)

BATIQUITOS LAGOON HIGHWAY BRIDGE REPLACEMENT AND BIKE/PED BRIDGE



Visual simulation (City of Carlsbad)

BATIQUITOS LAGOON HIGHWAY BRIDGE REPLACEMENT AND BIKE/PED BRIDGE



Visual simulation (City of Carlsbad)

CALTRANS DISTRICT 11 ACTIVE TRANSPORTATION PLAN



3 Major Deliverables

**Create a
District Active
Transportation
Asset Inventory
Map with
Facility
Conditions**

**Identify
Network Gaps
in Comfort and
Connectivity**

**Create
Prioritized
Route
Segments /
Project Lists**



**For additional information, please contact:
Vanessa.Delarosa@dot.ca.gov**

The background features a vibrant, abstract design. It includes several human silhouettes in various colors (teal, green, yellow) and numerous interlocking gears of different sizes and colors (blue, green, yellow, orange, red, purple). The overall theme suggests a focus on community, technology, and collaborative effort.

Caltrans District 11 Bicycle Pedestrian Advisory Committee

For additional information and meeting times,
please contact: Brandon.Tobias@dot.ca.gov