



MID-COAST CORRIDOR
TRANSIT PROJECT

UCPG

University City Planning Group

Monthly Update

May 8, 2018



MID-COAST CORRIDOR
TRANSIT PROJECT



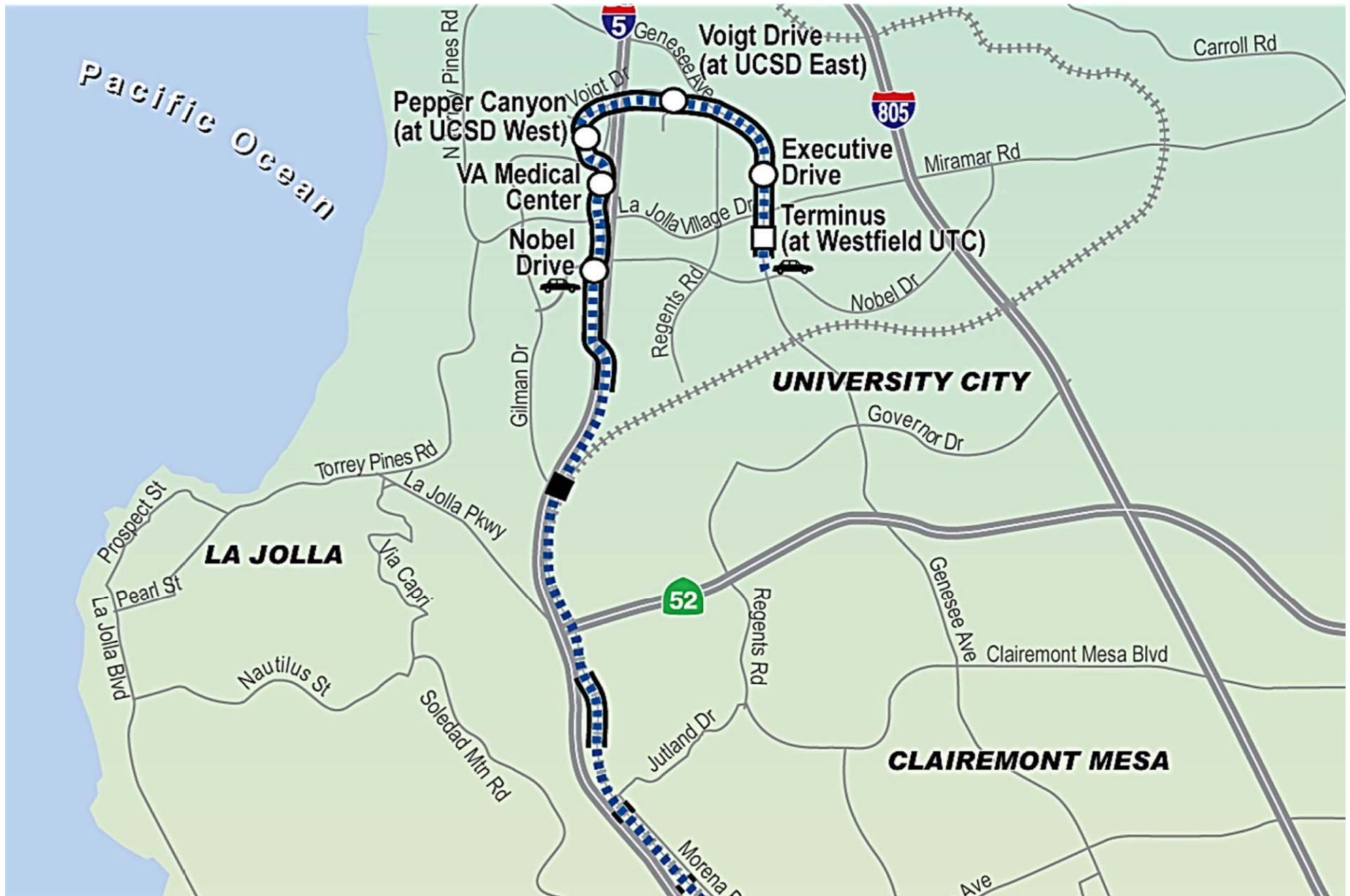
Presented by:



Terry Martin, Construction Manager, MCTC

Frank Owsiany, Dep. Project Director, SANDAG

Prepared by: Dave Vornberger, SANDAG CMC



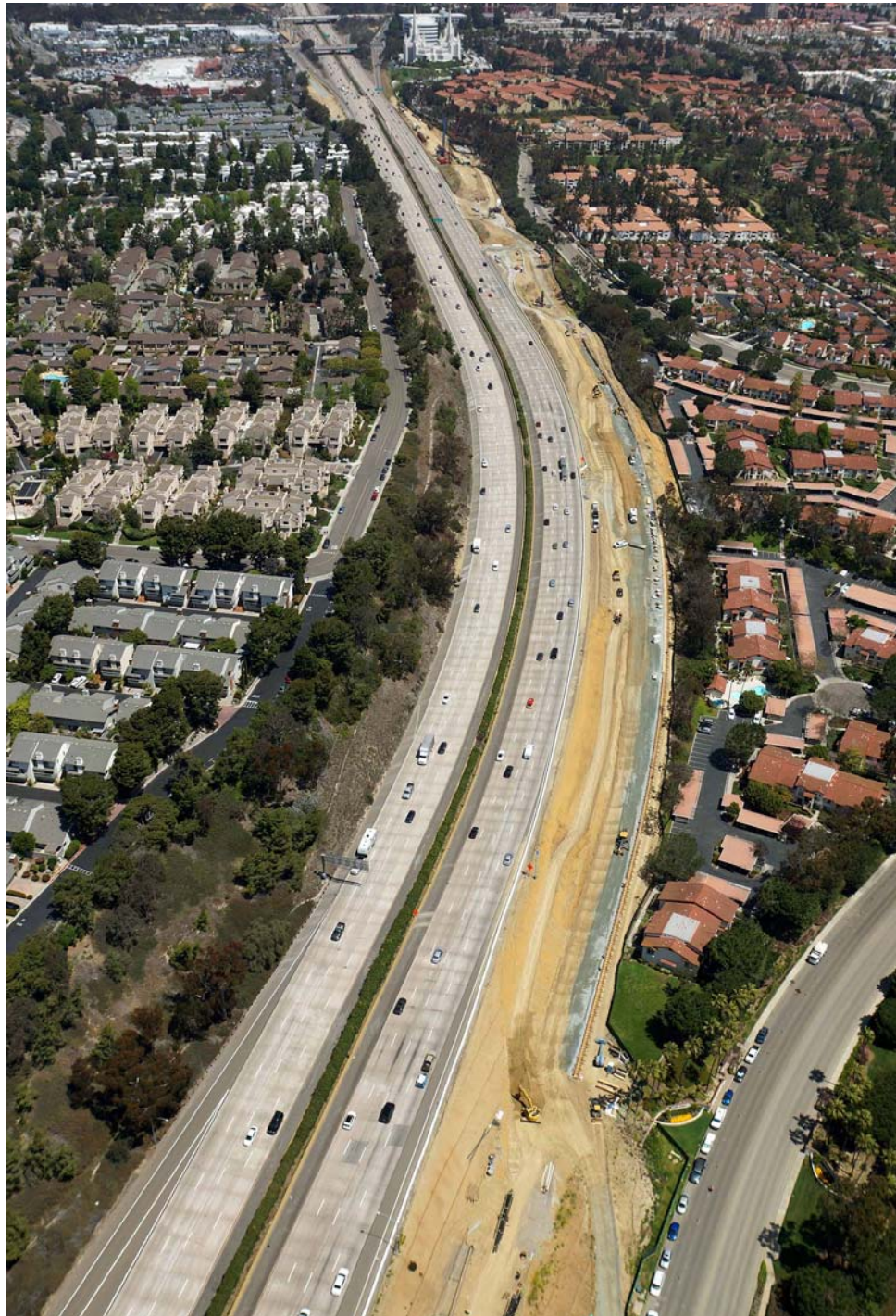
Mid-Coast Corridor (North) Alignment



I-5 Looking North
at La Jolla Colony Dr



Retaining Wall # 767



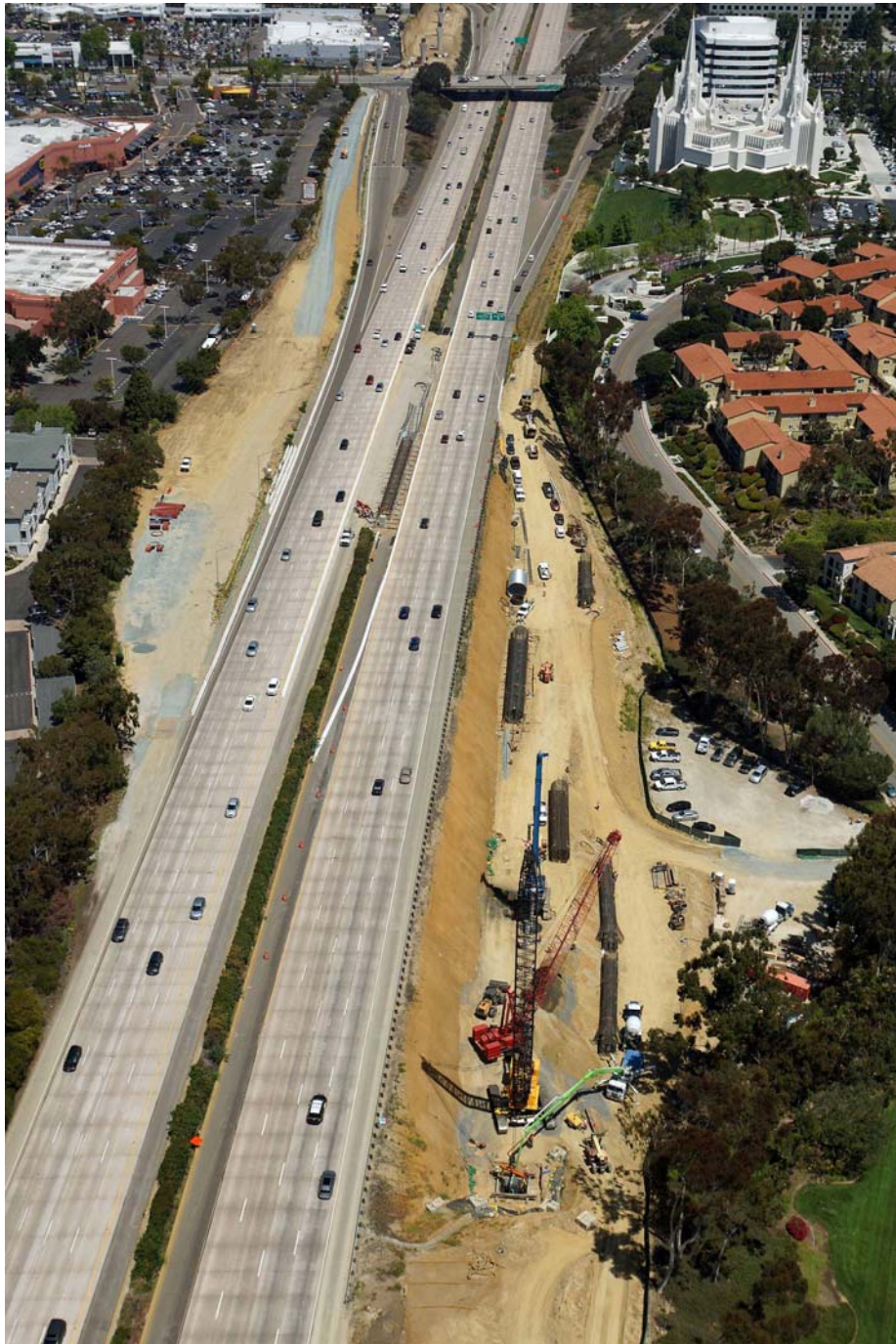
**I-5 Looking North
towards Charmant Dr**



Retaining Wall # 780



Looking North at Nobel Viaduct



**I-5 Looking North
towards Nobel Dr**



**Southbound I-5 Nobel on-ramp
Temporary wire wall and grading
Construction (looking north)**



**I-5 Looking North
at Nobel Dr towards
La Jolla Village Dr**



Looking west at Nobel Viaduct progress
between Nobel Dr and LJVD



**Nobel Viaduct
Falsework pad grading for Frame 9
(looking south on LJVD on-ramp)**



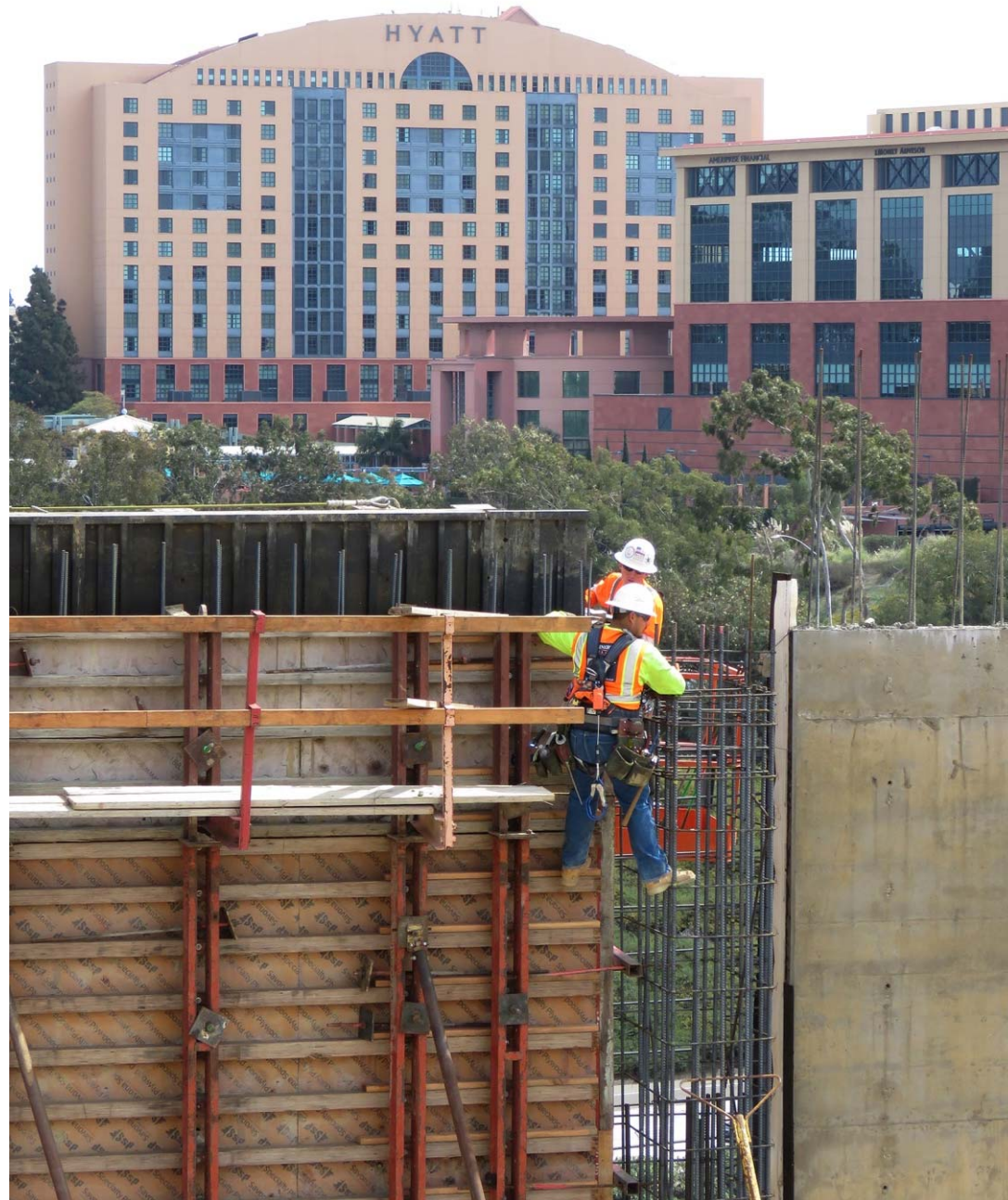
**Looking Northwest at La Jolla Village Dr
towards VA Medical Center Station**



Looking north at falsework over
La Jolla Village Drive
(RW 848 in background)



**Progress at the VA Medical Center Station
(Retaining Wall 848)**



**Carpenters working
on the VA Station
Wall and Pilaster forms**



**Looking North at VA Medical Center Station
With the Gilman Bridge in background**



Gilman Bridge, looking northeast



Gilman Bridge, looking east



Looking south at
Pepper Canyon Station
and UCSD Viaduct



Pepper Canyon / UCSD West Station
Falsework



**UCSD Viaduct falsework in Pepper Canyon
Student Tour**



Looking south at Voigt Drive and Warren Field



Voigt Drive / UCSD East Station Construction



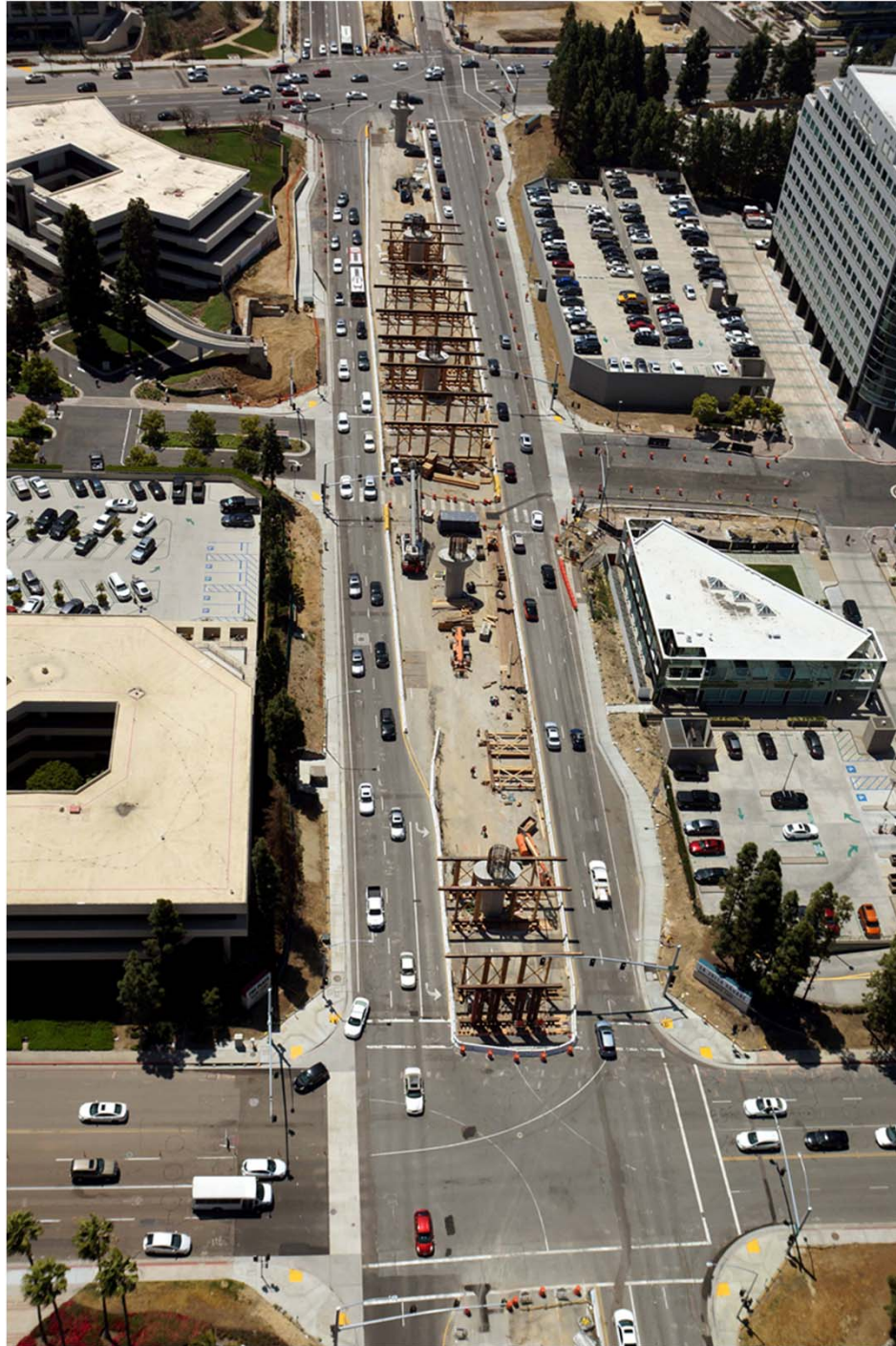
Looking west at UCSD Viaduct with Genesee Ave in foreground



Looking southeast
on Genesee Ave
at Regents Road



Completing upper column flare rebar cage at Genesee Viaduct Bent # 4



**Falsework -
Looking south
on Genesee Ave
towards La Jolla
Village Drive (top)**



**Falsework for the Executive Drive Station
(looking south on Genesee Ave)**



**Pouring Genesee Viaduct CIDH at Bent # 25
(looking north towards La Jolla Village Dr)**



**Genesee Ave
looking north
at Nobel Drive**

Presented by:

MCTC



Mid-Coast Transit Constructors
Stacy and Witbeck · Herzog · Skanska

SANDAG

Photography by: Dave Vornberger

Aerial Photography by: Lenska Aerial Images

