



MID-COAST TROLLEY EXTENSION

# CONNECTING

THE SAN DIEGO REGION

Construction Update – February 19, 2019



# PROJECT OVERVIEW

11-mile extension  
of Trolley Blue Line

Old Town Transit Center  
to Westfield UTC

9 new stations  
(5 with parking)

36 trolley cars



# CONSTRUCTION OVERVIEW



Relocate  
utilities



Build supporting  
infrastructure



Construct stations,  
bridges and viaduct



Install track  
and power



Testing and  
start-up

# San Diego River Bridge



**January 2018**



**January 2019**

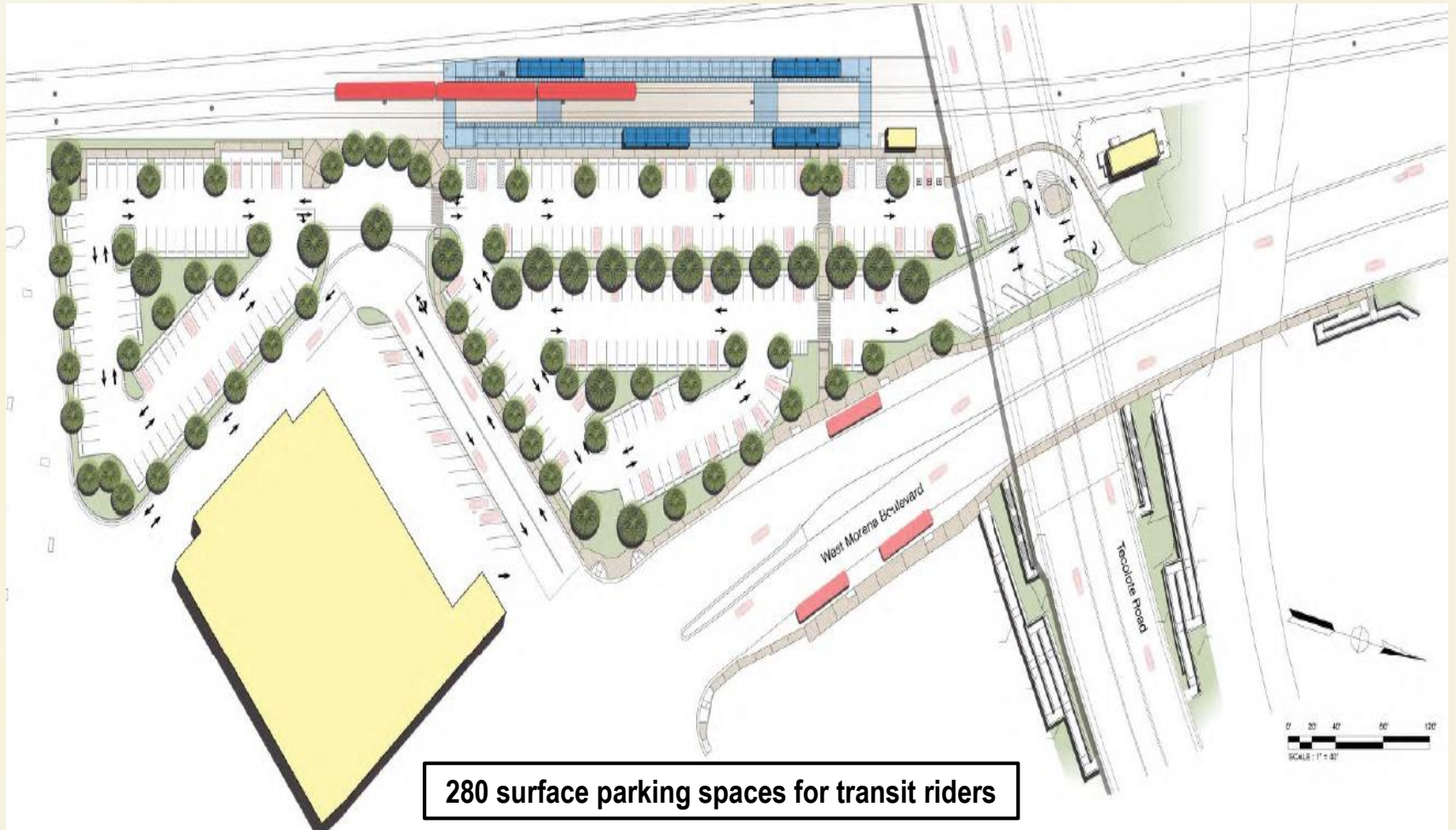
# Storm Drain Installation near Tecolote Road



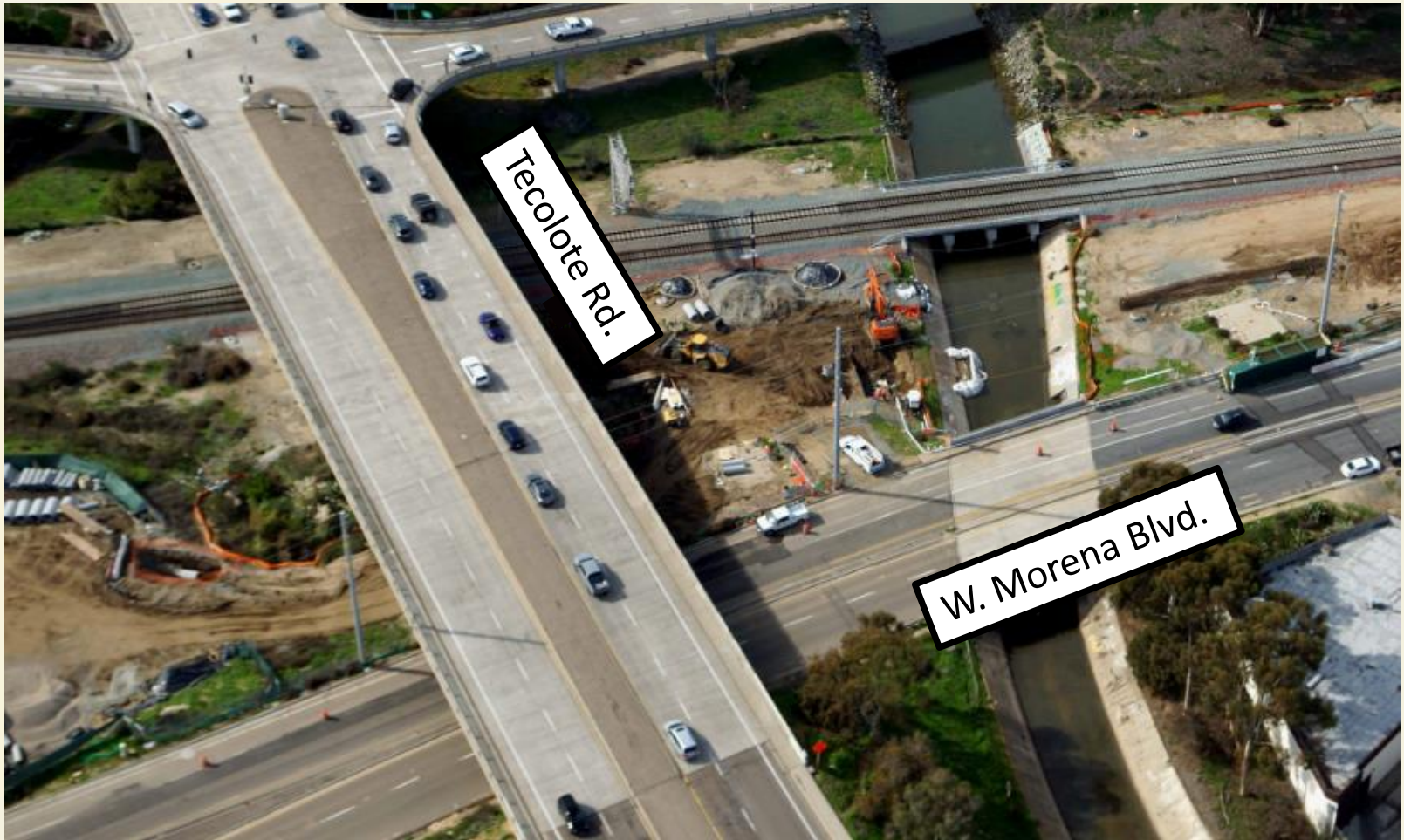
# Tecolote Road Station Site



# Tecolote Road Station Site

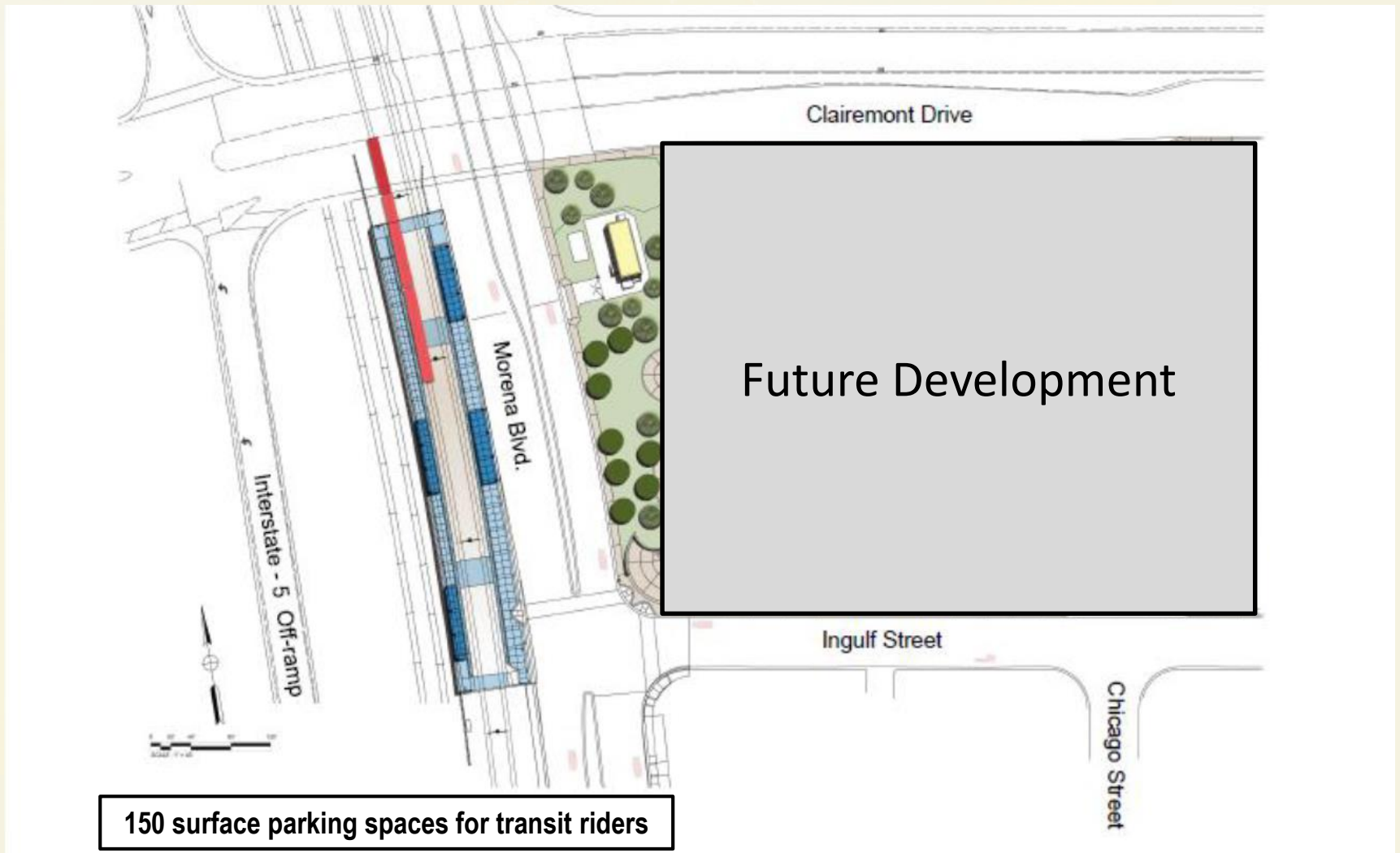


# Tecolote Road and W. Morena Boulevard





# Clairemont Drive Station Site



# Clairemont Drive Station / Morena Boulevard



# Morena Boulevard and Clairemont Drive Station



# Balboa Avenue Station Site



**220 surface parking spaces for transit riders**

**Kiss-and-ride drop-off / pick-up area**

**5 bus bays within station + 1-2 along Morena Blvd**

**Pedestrian access from both sides of Balboa Ave**

**Electric Vehicle Charging Stations**

**Bicycle parking facilities**

# 1-5 Off-ramp and Balboa Avenue Station



# Construction Update

## UPCOMING BALBOA AVENUE/GARNET AVENUE LANE AND OFF-RAMP CLOSURES

As part of ongoing construction on the northbound Interstate 5 off-ramp to Balboa Avenue/Garnet Avenue, the following closures and work activities will be in effect:

- A full weekend closure of the northbound Interstate 5 off-ramp to Balboa Avenue/Garnet Avenue from Friday, February 22, at 9 p.m. to Sunday, February 24, at 9 p.m.
- Shifting of the northbound Interstate 5 off-ramp to Balboa Avenue/Garnet Avenue to newly constructed pavement adjacent to the existing off-ramp.
- Single lane closure of the northbound Interstate 5 from Grand Avenue/Garnet Avenue to Balboa Avenue/Garnet Avenue from Friday, February 22, at 8 p.m. to Sunday, February 24, at 3 a.m.
- Nighttime closure of eastbound Balboa Avenue/Garnet Avenue on Friday, February 22, and Saturday, February 23, from 9 p.m. to 7 a.m. each night. One lane of eastbound and westbound traffic will be shifted to westbound Balboa Avenue/Garnet Avenue each night.
- Daytime single lane closures of eastbound Balboa Avenue/Garnet Avenue on Saturday, February 23, and Sunday, February 24, from 7 a.m. to 9 p.m. to each day.

Construction schedules may change with very little notice.

### What to Expect:

- Detour routes and signage will be in place. Please heed all traffic signs and use caution when traveling near the work area.
- Construction activities will include roadway construction work and traffic light installation.
- A permanent traffic signal will be activated at the intersection of the off-ramp and Balboa Avenue/Garnet Avenue in spring 2019.
- Off-ramp and roadwork construction activities will be completed in phases and intermittent nighttime and weekend closures of the northbound Interstate 5 off-ramp to Balboa Avenue/Garnet Avenue will continue through summer 2019.
- This work requires the use of heavy machinery and will generate noise. Crews will minimize impacts as much as possible.



### UPCOMING BALBOA AVENUE/GARNET AVENUE LANE AND OFF-RAMP CLOSURES

As part of ongoing construction on the northbound Interstate 5 off-ramp to Balboa Avenue/Garnet Avenue, the following closures and work activities will be in effect:

- A full weekend closure of the northbound Interstate 5 off-ramp to Balboa Avenue/Garnet Avenue from Friday, February 22, at 9 p.m. to Sunday, February 24, at 9 p.m.
- Shifting of the northbound Interstate 5 off-ramp to Balboa Avenue/Garnet Avenue to newly constructed pavement adjacent to the existing off-ramp.
- Single lane closure of the northbound Interstate 5 from Grand Avenue/Garnet Avenue to Balboa Avenue/Garnet Avenue from Friday, February 22, at 8 p.m. to Sunday, February 24, at 3 a.m.
- Nighttime closure of eastbound Balboa Avenue/Garnet Avenue on Friday, February 22, and Saturday, February 23, from 9 p.m. to 7 a.m. each night. One lane of eastbound and westbound traffic will be shifted to westbound Balboa Avenue/Garnet Avenue each night.
- Daytime single lane closures of eastbound Balboa Avenue/Garnet Avenue on Saturday, February 23, and Sunday, February 24, from 7 a.m. to 9 p.m. to each day.

Construction schedules may change with very little notice.

#### What to Expect:

- Detour routes and signage will be in place. Please heed all traffic signs and use caution when traveling near the work area.
- Construction activities will include roadway construction work and traffic light installation.
- A permanent traffic signal will be activated at the intersection of the off-ramp and Balboa Avenue/Garnet Avenue in spring 2019.
- Off-ramp and roadwork construction activities will be completed in phases and intermittent nighttime and weekend closures of the northbound Interstate 5 off-ramp to Balboa Avenue/Garnet Avenue will continue through summer 2019.
- This work requires the use of heavy machinery and will generate noise. Crews will minimize impacts as much as possible.



For Transportation Solutions During Construction



Shift is your source for transportation solutions and construction information. Stay in the know and inform your commute at [ShiftSanDiego.com](http://ShiftSanDiego.com).

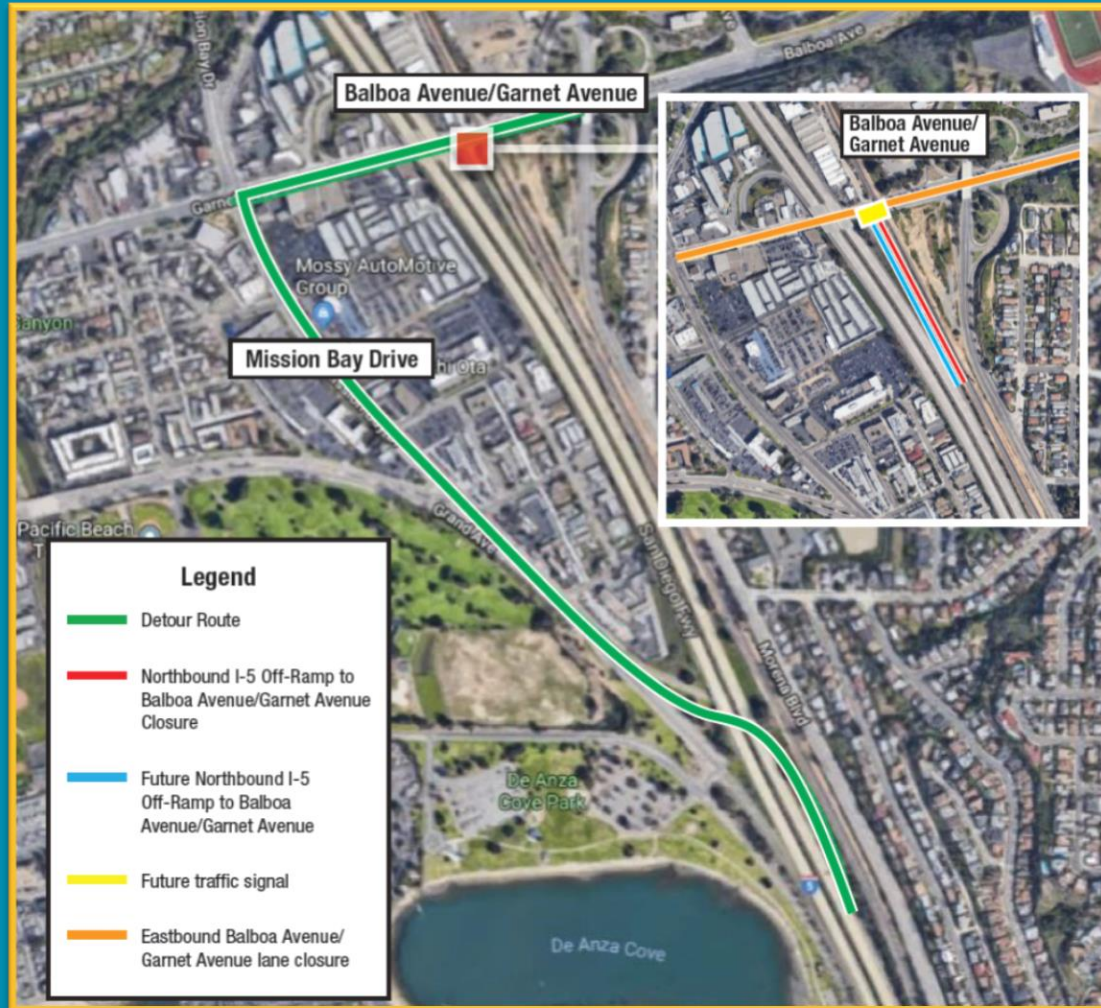
#ShiftSanDiego



# 1-5 Off-ramp to Balboa Avenue



# Work Area and Detour Map





# Balboa Avenue Bridges



# Retaining Wall north of Balboa Avenue



# Retaining Wall under SR-52



# Retaining Wall at La Jolla Colony



# Mid-Coast – UCSD Viaduct



# Rose Creek Bikeway

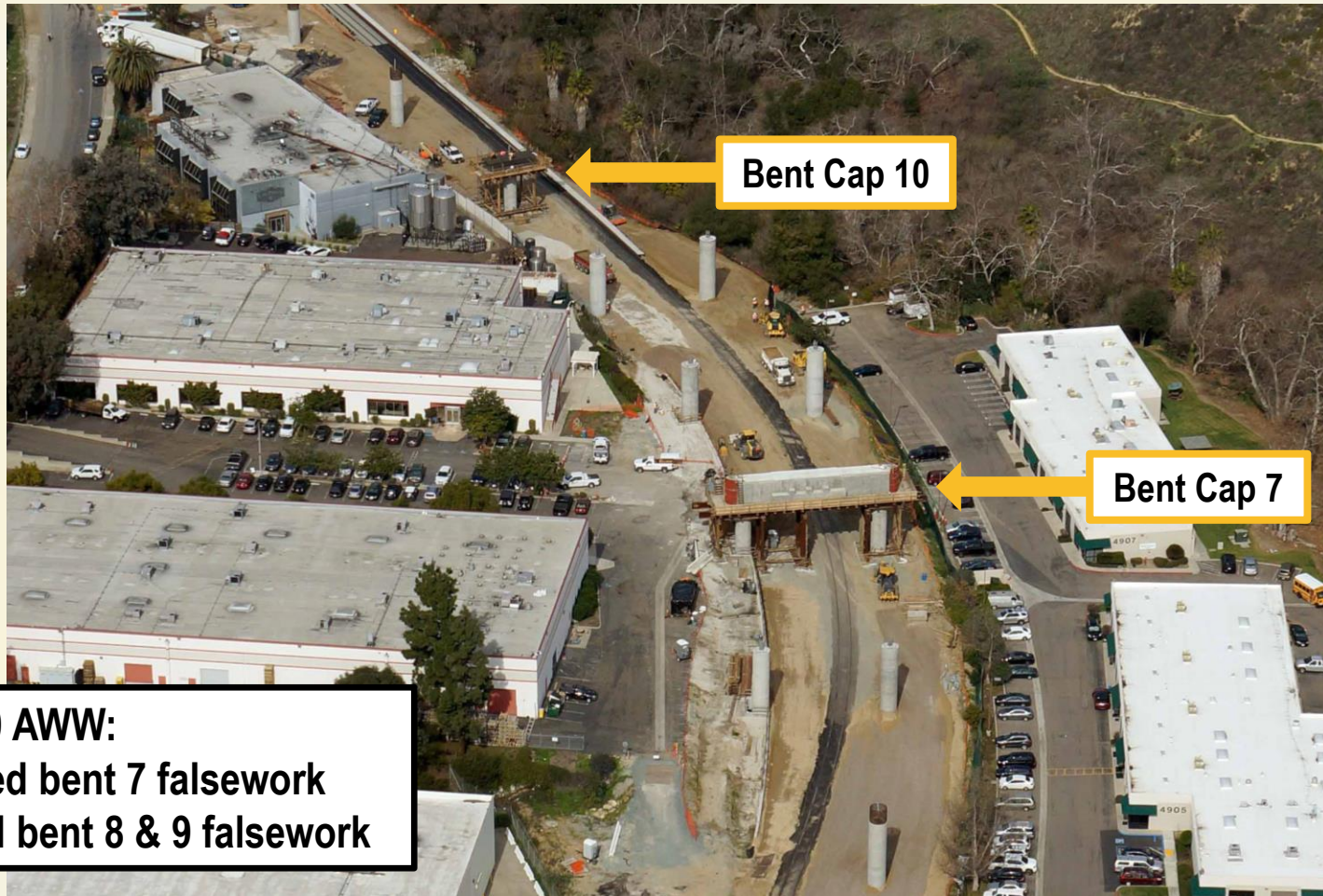


# Absolute Work Windows (AWWs)

- Select weekends where all rail service is suspended
- Allows critical project milestones to be met
- Reduces overall project schedule and budget
- Ensures construction crew safety
- Work completed during AWWs could include:
  - Rail replacement and repair
  - Replacement of rail ties
  - Bridge repair
  - Rail resurfacing
  - Undercrossing installation



# Rose Creek Flyover OH LRT - AWW

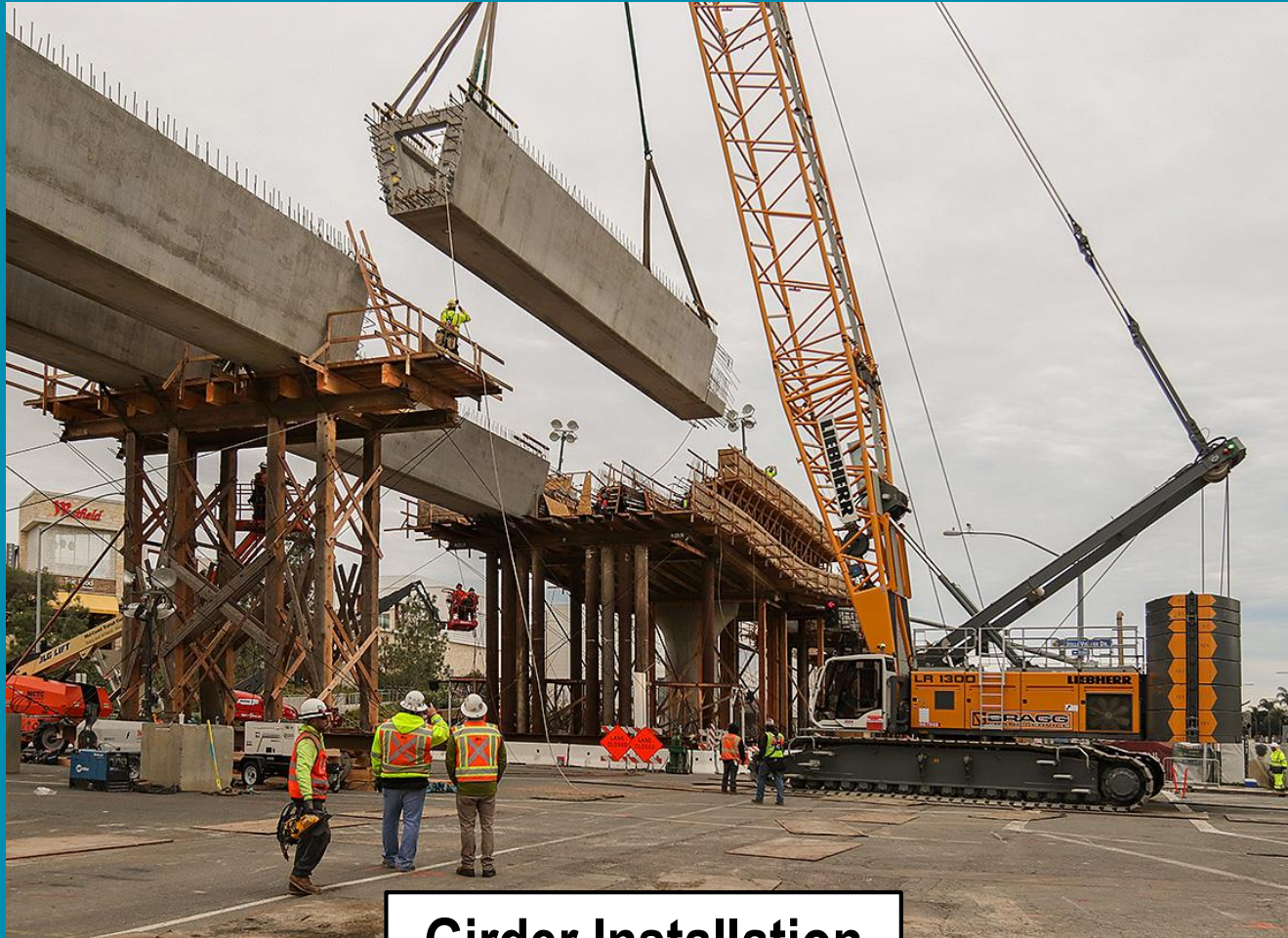


**Feb 9 & 10 AWW:**

- removed bent 7 falsework
- erected bent 8 & 9 falsework



# Genesee Avenue / La Jolla Village Drive



**Girder Installation**

## Contact Us

[midcoast@sandag.org](mailto:midcoast@sandag.org)

(877) 379-0110

[KeepSanDiegoMoving.com/MidCoast](http://KeepSanDiegoMoving.com/MidCoast)



Mid-Coast Trolley



@MidCoastTrolley

**shift**

a change in direction