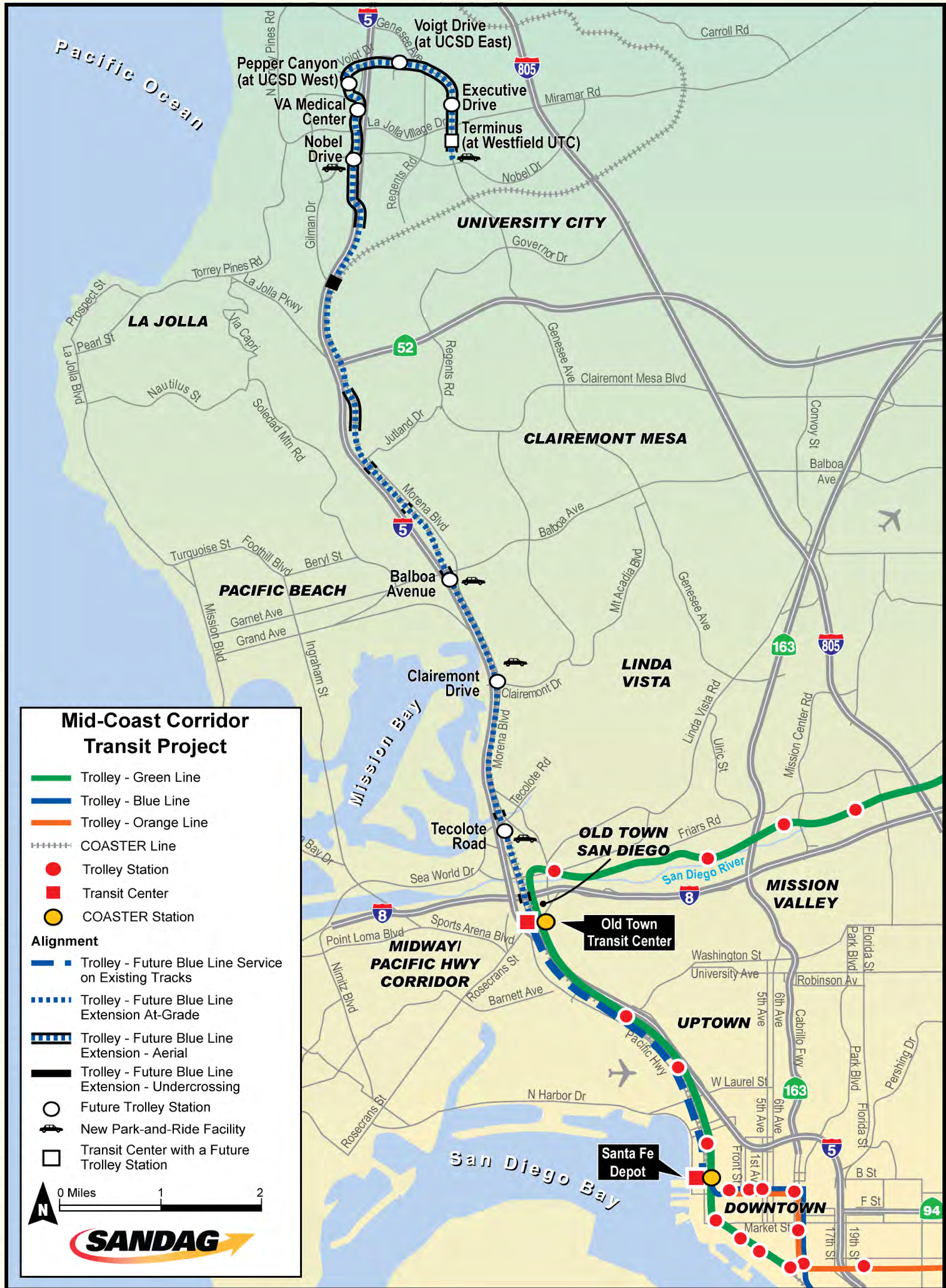
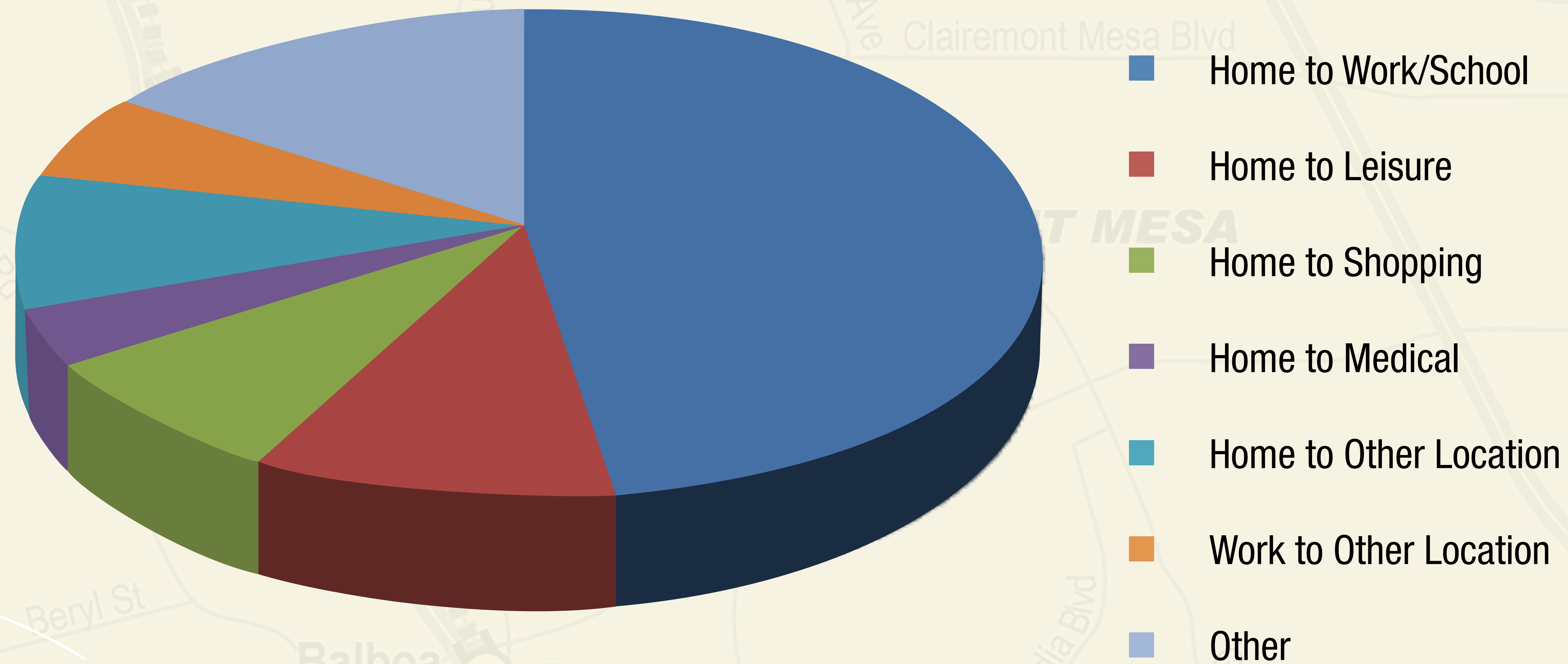


MID-COAST TROLLEY ALIGNMENT



HOW DO PEOPLE USE THE TROLLEY?

Breakdown of Trip Types



- 53% of riders have monthly pass
- 80% of riders use the system 4-7 days/week

TROLLEY OPERATIONS

- 15 minute headways on opening day;
7.5 minute headways in 2030
- Service coordinated with buses at transit centers
- Barrier free system – roving fare inspectors and security
- All stations and parking areas will have CCTV and PA system

CONSTRUCTION SCHEDULE (AS OF MARCH 2016)

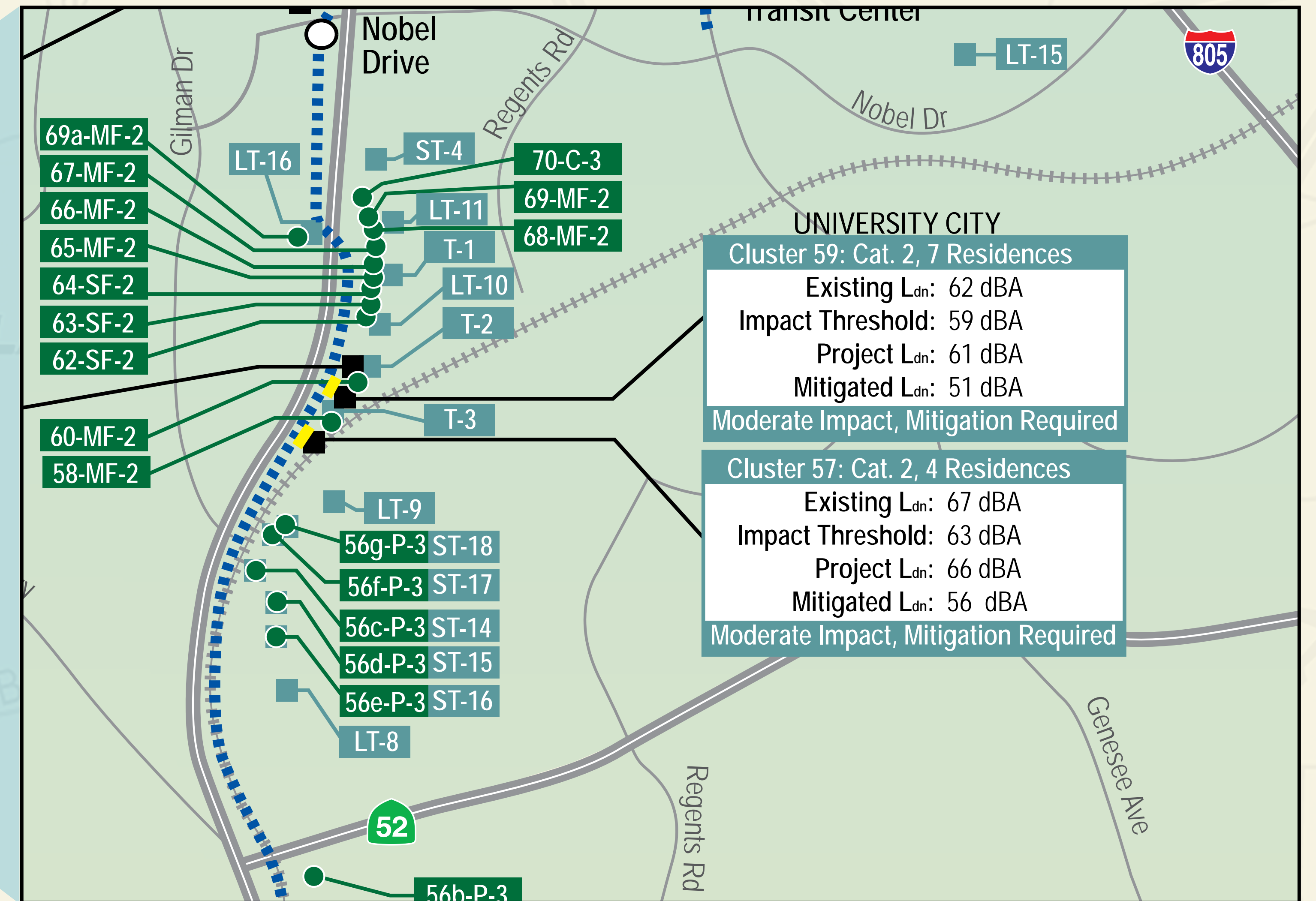
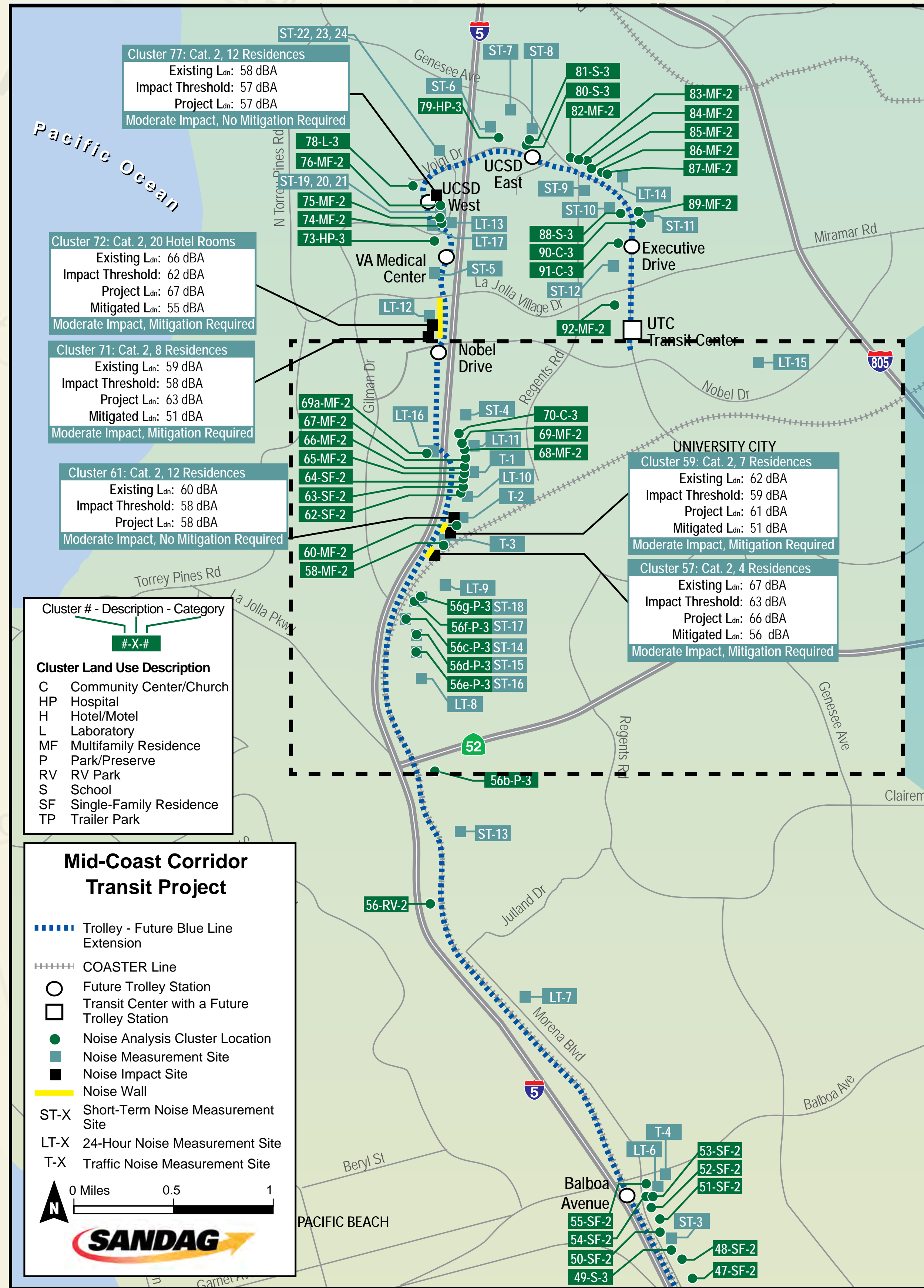
MID-COAST CORRIDOR TRANSIT PROJECT

Construction Activity	2016												2017												2018												2019												2020												2021											
	1	2	3	4	5	6	7	8	9	10	11	12	1	2	3	4	5	6	7	8	9	10	11	12	1	2	3	4	5	6	7	8	9	10	11	12	1	2	3	4	5	6	7	8	9	10	11	12	1	2	3	4	5	6	7	8	9	10	11	12	1	2	3	4	5	6	7	8	9	10	11	12
Early Utilities	EARLY UTILITIES																																																																							
LRT Construction													LRT Construction																																																											
Retaining Walls													RETAINING WALLS																																																											
Viaducts													VIADUCTS (I-5 to UTC)																																																											
Stations																									STATIONS																																															
Track																									TRACK																																															
Systems																																					SYSTEMS																																			

GILMAN DRIVE / LA JOLLA COLONY DRIVE TO NOBEL VIADUCT

Construction Activity	2016												2017												2018												2019												2020												2021											
	1	2	3	4	5	6	7	8	9	10	11	12	1	2	3	4	5	6	7	8	9	10	11	12	1	2	3	4	5	6	7	8	9	10	11	12	1	2	3	4	5	6	7	8	9	10	11	12	1	2	3	4	5	6	7	8	9	10	11	12												
Earthwork	EARTHWORK																																																																							
Charmant Bridges	CHARMANT BRIDGES																																																																							
Nobel Viaduct													NOBEL VIADUCT																																																											
Gilman "Box"													GILMAN "BOX"																																																											
Retaining Walls													RETAINING WALLS																																																											
Track																									TRACK																																															
Systems																																					SYSTEMS																																			

NOISE MEASUREMENT AND IMPACT LOCATIONS



SOUTH CHARMANT BRIDGE

VISUAL SIMULATION

NOW



AFTER CONSTRUCTION



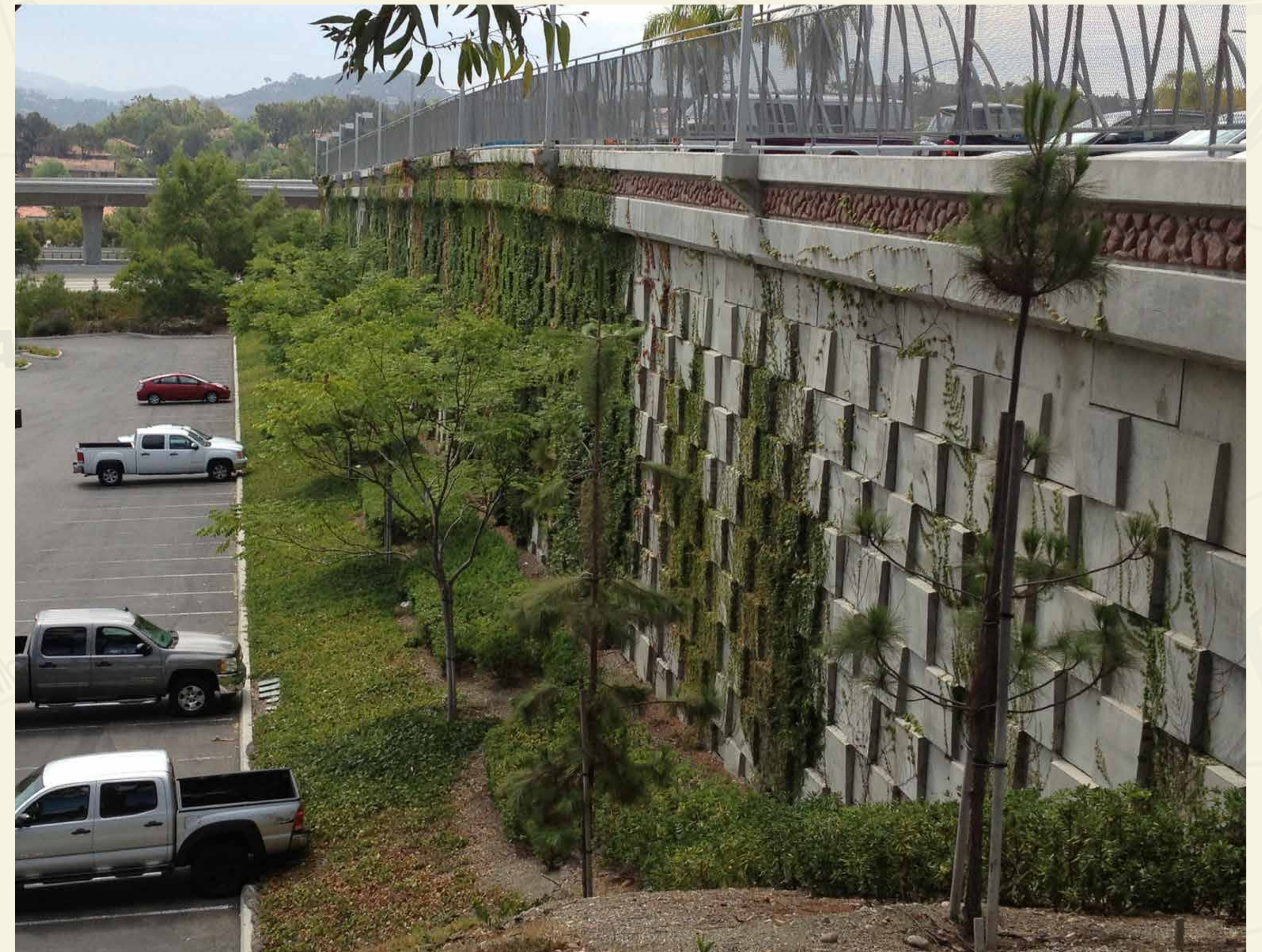
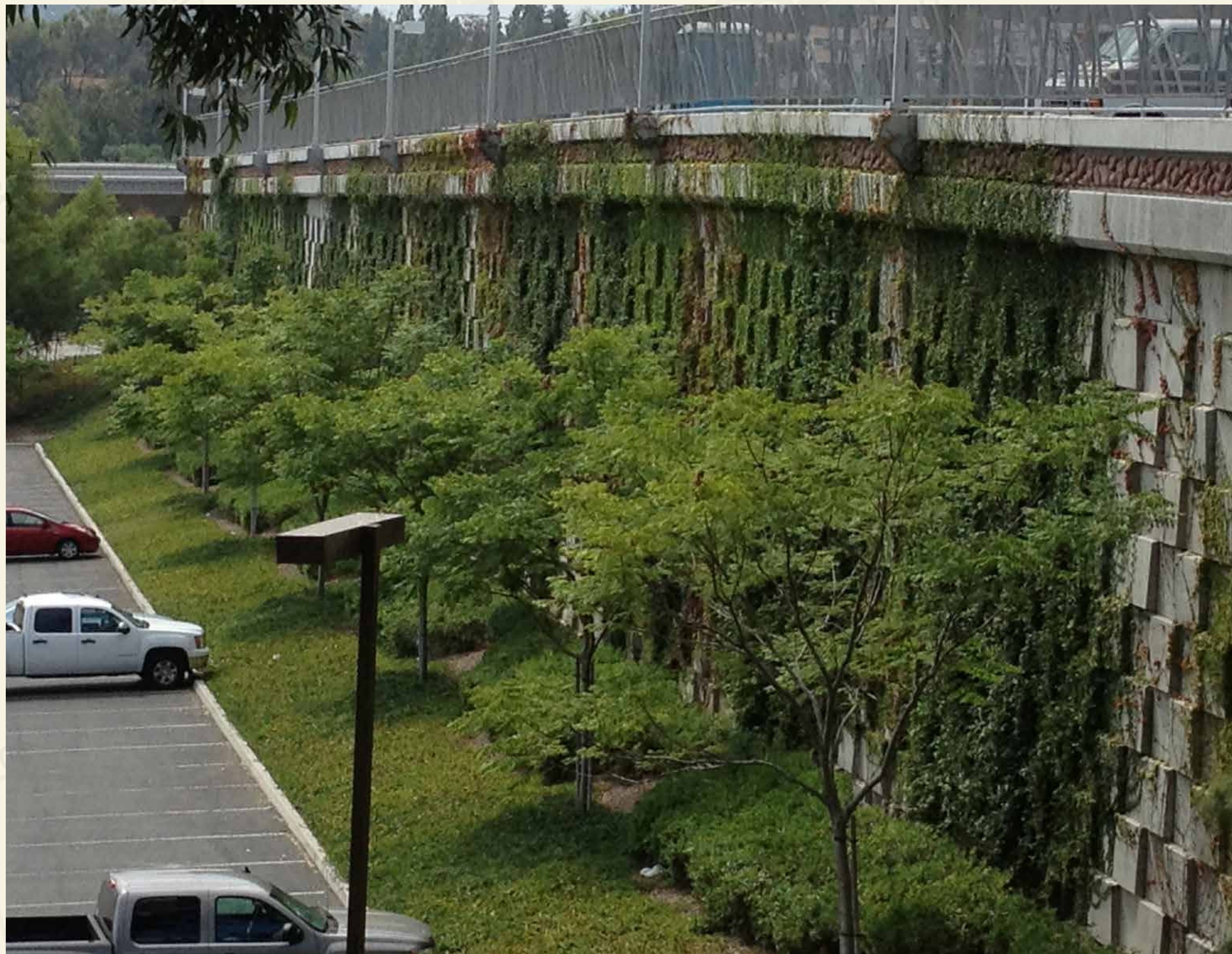
AS PLANTS MATURE



EXAMPLE OF MSE WALL - BEFORE PLANT ESTABLISHMENT



EXAMPLE OF MSE WALL - AFTER PLANT ESTABLISHMENT



Clairemont Drive

LINDA VISTA

