



MID-COAST TROLLEY

MID-COAST TROLLEY CONSTRUCTION UPDATE



FALL 2018

UPCOMING OVERNIGHT CLOSURES OF I-5 FOR VOIGT DRIVE TROLLEY OVERPASS

Starting November 13, there will be a series of temporary overnight closures on northbound and southbound Interstate 5 as crews set falsework, the temporary structures used to support the bridge during construction, on the Trolley overpass at Voigt Drive.

Motorists should plan to take alternate routes to avoid potential congestion, as significant delays are expected during these closures.

Reminder: The previously announced closures on November 13 – 15 are still scheduled (see below).

The following closures will be in place:

Closures for this work are subject to change at any time.

Tuesday, November 13, through Thursday, November 15:

- Full closure of northbound lanes from La Jolla Village Drive to Genesee Avenue.
- Work hours are 10:30 p.m. to 5 a.m. each night, unless noted otherwise.

Sunday, November 18, through Tuesday, November 20:

- Full closure of northbound lanes from La Jolla Village Drive to Genesee Avenue.
- Work hours are 10:30 p.m. to 5 a.m. each night, unless noted otherwise.

Monday, November 26, through Thursday, November 29:

- Full closure of southbound lanes from the Interstate 5/Interstate 805 Interchange to La Jolla Village Drive.
- Work hours are 9:30 p.m. to 5 a.m. each night, unless noted otherwise.

For Transportation Solutions
During Construction

shift

Shift is your source for transportation solutions and construction information. Stay in the know and inform your commute at ShiftSanDiego.com.

#ShiftSanDiego



MidCoastTrolley
@MidCoastTrolley
#MidCoastAlert

@SANDAGregion
@SANDAGregion

KeepSanDiegoMoving.com/MidCoast

Construction Hotline: (877) 379-0110

MidCoast@sandag.org



U.S. Department of Transportation
Federal Transit Administration

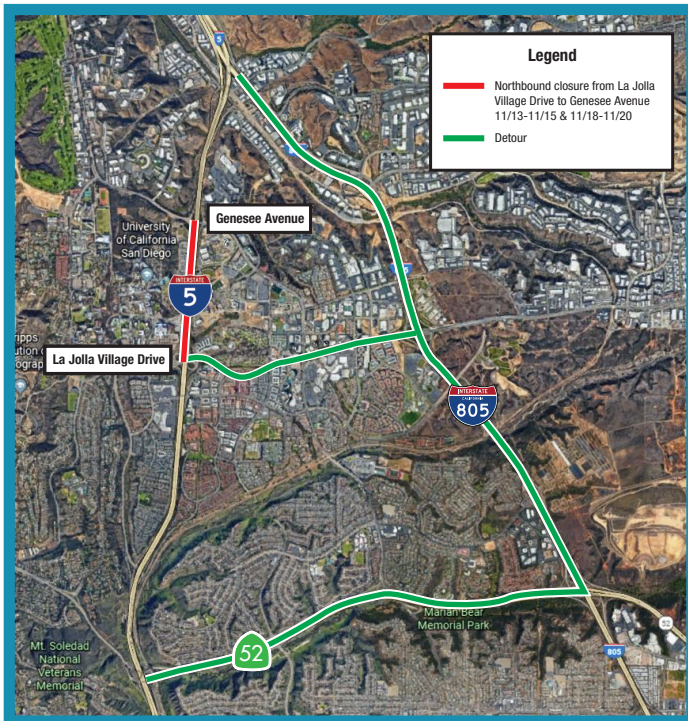
About the Project

The Mid-Coast Trolley project will extend Trolley service from Old Town Transit Center to the University City community, serving major activity centers such as Mission Bay, the VA Medical Center, UC San Diego, and Westfield UTC. Nine new stations will be constructed. Major construction work began in 2016, with service anticipated to begin in 2021.

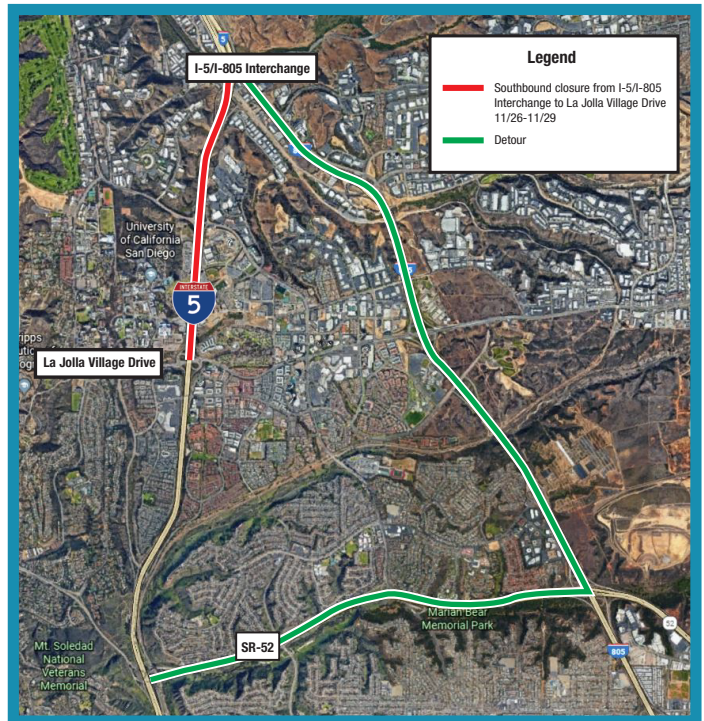
To be added to our project email list, please go to KeepSanDiegoMoving.com/MidCoast

Work Areas:

Northbound Closures



Southbound Closures



Si desea obtener información en español, por favor comuníquese al (619) 699-1950 o pio@sandag.org.

In compliance with the Americans with Disabilities Act (ADA), this document is available in alternate formats by contacting the SANDAG ADA Coordinator, the Director of Administration, at (619) 699-1900 or (619) 699-1904 (TTY).