



MID-COAST TROLLEY

MID-COAST TROLLEY CONSTRUCTION UPDATE



OCTOBER 2019

OVERNIGHT CLOSURES OF I-5

Beginning Tuesday, October 1, full closures of southbound Interstate 5 (I-5) lanes will be in place as crews continue construction of the Trolley overcrossing south of Nobel Drive. On October 1, crews will adjust falsework—or wooden support beams—to the proper elevation. On October 2, crews will pour concrete to form the bridge for the future overcrossing.

Closures will begin on October 1, and will continue until October 3. Additional freeway closures will be required and notices will be provided at a later date.

Motorists should plan to take alternate routes to avoid potential congestion.

The following closures will be in place:

On Tuesday morning, October 1:

- Full closure of southbound lanes from the I-5/I-805 Interchange to La Jolla Colony Drive
- Work and closure hours will be from 12 a.m. to 5 a.m.

Beginning Wednesday, October 2, through Thursday, October 3:

- Full closure of southbound lanes from the I-5/I-805 Interchange to La Jolla Colony Drive
- Work and closure hours will be from 9:30 p.m. to 5 a.m.

Construction schedules are subject to change.

About the Project

The Mid-Coast Trolley project will extend Trolley service from Old Town Transit Center to the University community, serving major activity centers such as Mission Bay, the VA Medical Center, UC San Diego, and University Towne Centre. Nine new stations will be constructed. Major construction work began in 2016, with service anticipated to begin in late 2021.

To be added to our project email list, please go to KeepSanDiegoMoving.com/MidCoast

For Transportation Solutions
During Construction

shift

Shift is your source for transportation solutions and construction information. Stay in the know and inform your commute at ShiftSanDiego.com.

#ShiftSanDiego



MidCoastTrolley
 @MidCoastTrolley
#MidCoastAlert

@SANDAGregion
 @SANDAGregion

KeepSanDiegoMoving.com/MidCoast

Construction Hotline: (877) 379-0110

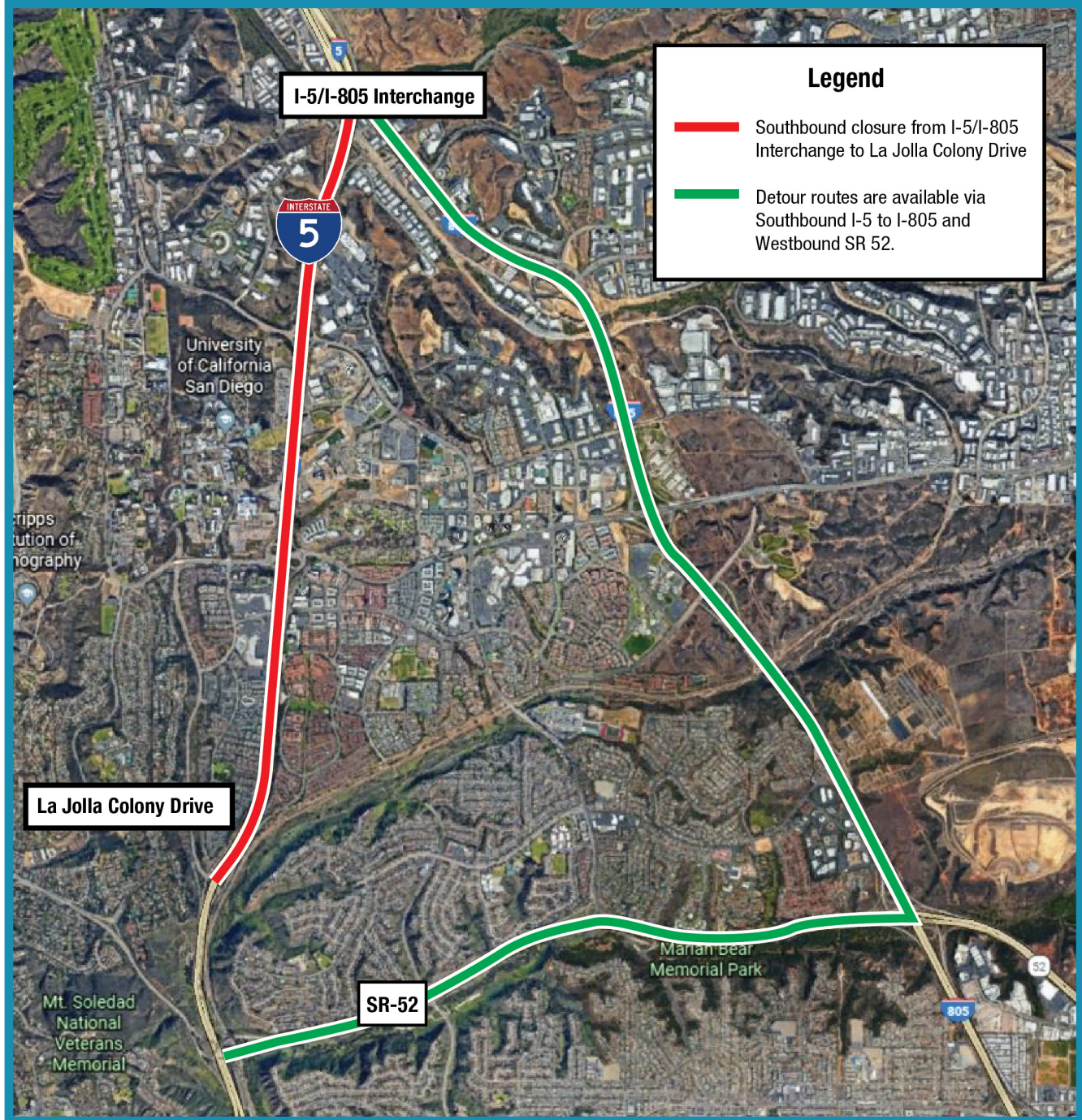
MidCoast@sandag.org



U.S. Department of Transportation
Federal Transit Administration

Work Area:

Southbound I-5 Closures



Si desea obtener información en español, por favor comuníquese al (619) 699-1950 o pio@sandag.org.

In compliance with the Americans with Disabilities Act (ADA), this document is available in alternate formats by contacting the SANDAG ADA Coordinator, the Director of Administration, at (619) 699-1900 or (619) 699-1904 (TTY).