



MID-COAST TROLLEY

MID-COAST TROLLEY CONSTRUCTION UPDATE



APRIL 2021

CONSTRUCTION ACTIVITIES FOR SURFACE PARKING AREA AT LA JOLLA VILLAGE SQUARE

In late April, crews will continue efforts to reconfigure the La Jolla Village Square surface parking area. This will be the second of four phases in the reconfiguration process. Construction activities will include asphalt demolition; new asphalt and concrete placement; and lighting, striping, and landscaping installations.

This work will improve access to the Nobel Drive Trolley Station parking structure as well as overall traffic flow. While construction is underway, the newly completed Nobel Drive Trolley Station parking structure will be available for use and patrons can enter from the west side of the structure. The surface parking area reconfigurations are anticipated to be completed by fall 2021.

What to Expect

- Typical work hours will be Mondays through Fridays, from 7 a.m. to 5 p.m.; additionally, some night and weekend work may be required
- Construction activities will take place inside of the fenced work area
- Work will be phased and completed in fenced-off sections of the parking area; notice will be provided before each phase begins
- Access to the mall entrance, the underground parking garage, and the Nobel Drive Trolley Station parking structure will be maintained at all times
- Businesses including California Pizza Kitchen will remain open during construction; access will be maintained at all times

Construction schedules are subject to change due to weather, equipment, and other issues.
Check [KeepSanDiegoMoving.com/MidCoastNotices](https://www.KeepSanDiegoMoving.com/MidCoastNotices) for regular schedule updates.

For Transportation Solutions
During Construction

shift

Shift is your source
for transportation
solutions and
construction
information. Stay in
the know and inform
your commute at
[ShiftSanDiego.com](https://www.ShiftSanDiego.com).

#ShiftSanDiego



MidCoastTrolley
 @MidCoastTrolley
#MidCoastAlert

@SANDAGregion
 @SANDAGregion

[KeepSanDiegoMoving.com/MidCoast](https://www.KeepSanDiegoMoving.com/MidCoast)

Construction Hotline: (877) 379-0110

MidCoast@sandag.org

SANDAG **TransNet**



U.S. Department of Transportation
Federal Transit Administration

Update on Construction During COVID-19 Pandemic

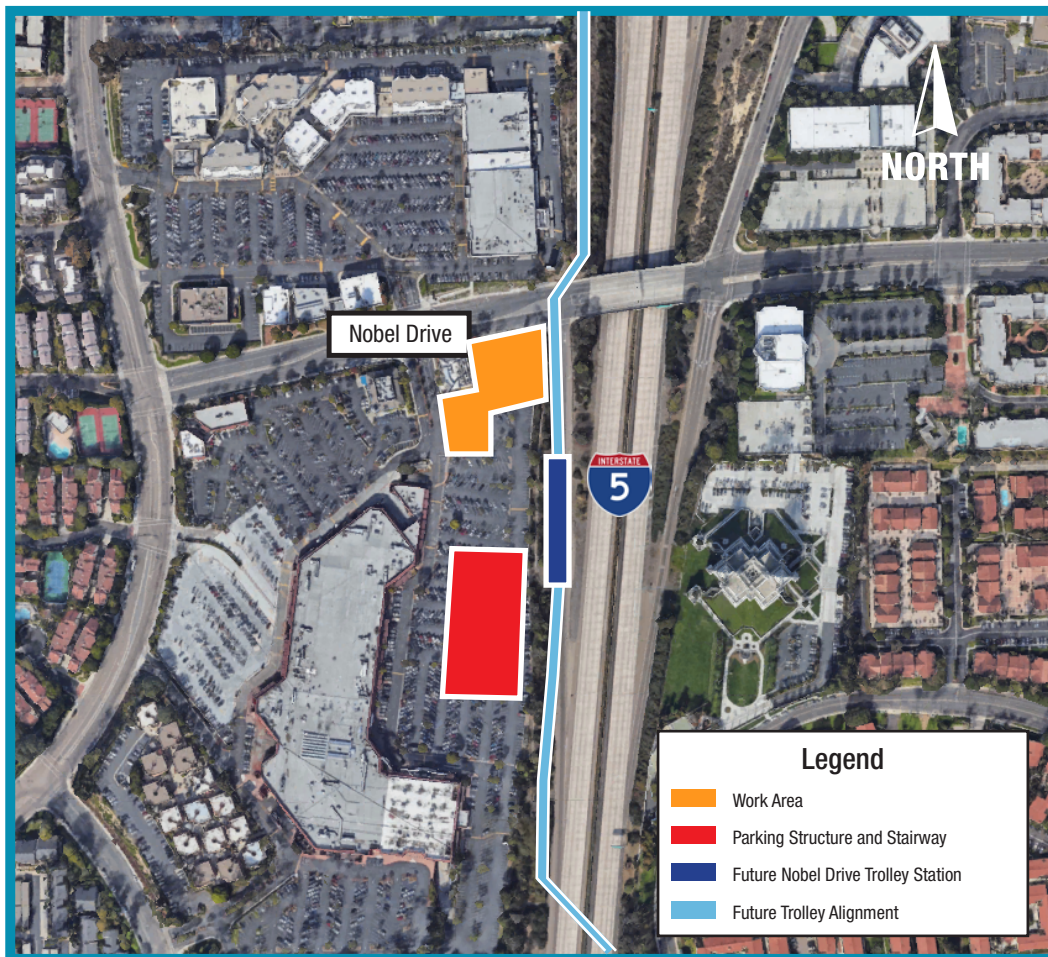
The government has deemed public works construction activities to be essential, so SANDAG is working to keep active construction projects moving while prioritizing the health and safety of its partners, contractors, and communities. For additional information, please visit sandag.org/COVID-19.

About the Mid-Coast Trolley Project

The Mid-Coast Trolley project will extend UC San Diego Blue Line Trolley service from the Santa Fe Depot in Downtown San Diego to the University community, serving major activity centers such as Mission Bay, the VA Medical Center, UC San Diego, and University Towne Centre. Nine new stations will be constructed. Major construction work began in 2016, with service anticipated to begin in late 2021.

To be added to our project email list, visit KeepSanDiegoMoving.com/MidCoastNotices.

Work Area:



Si desea obtener información en español, por favor comuníquese al (619) 699-1950 o pio@sandag.org.

In compliance with the Americans with Disabilities Act (ADA), this document is available in alternate formats by contacting the SANDAG ADA Coordinator, the Director of Diversity and Equity, at (619) 699-1900 or (619) 699-1904 (TTY).