



MID-COAST TROLLEY

# MID-COAST TROLLEY CONSTRUCTION UPDATE



AUGUST 2020

## CONSTRUCTION ACTIVITIES FOR TROLLEY PARKING STRUCTURE AT LA JOLLA VILLAGE SQUARE

Beginning Monday, August 3 and continuing for approximately two weeks, crews will install sewer and stormwater lines for the future Nobel Drive Trolley Station parking structure. Work will take place near the entrance to the underground parking garage at La Jolla Village Square and will include road demolition.

Once complete, the parking structure will provide spaces for transit patrons and retail customers and will include a direct walkway to the Nobel Drive Trolley Station. Construction of the structure began in January 2020 and is anticipated to be completed in fall 2020.

### What to Expect

- Typical work and closure hours will be Sunday through Thursday, from 9 p.m. to 5 a.m. each night
- Construction activities include underground utility work, trenching, road demolition, and drilling
- Please expect noise as this work is completed
- Access to businesses, the shop entrance, and the underground parking garage will be maintained at all times; however, deliveries may be slightly delayed as crews accommodate the delivery trucks

**Construction schedules are subject to change due to weather, equipment, and other issues. Check [KeepSanDiegoMoving.com/MidCoastNotices](http://KeepSanDiegoMoving.com/MidCoastNotices) for regular schedule updates.**

### Update on Construction During COVID-19 Pandemic

The government has deemed public works construction activities to be essential, so SANDAG is working to keep active construction projects moving while prioritizing the health and safety of its partners, contractors, and communities. For additional information, please visit [sandag.org/COVID-19](http://sandag.org/COVID-19).

For Transportation Solutions  
During Construction

shift

Shift is your source for transportation solutions and construction information. Stay in the know and inform your commute at [ShiftSanDiego.com](http://ShiftSanDiego.com).

#ShiftSanDiego



MidCoastTrolley  
 @MidCoastTrolley  
#MidCoastAlert

@SANDAGregion  
 @SANDAGregion

[KeepSanDiegoMoving.com/MidCoast](http://KeepSanDiegoMoving.com/MidCoast) |

Construction Hotline: (877) 379-0110 |

[MidCoast@sandag.org](mailto:MidCoast@sandag.org)



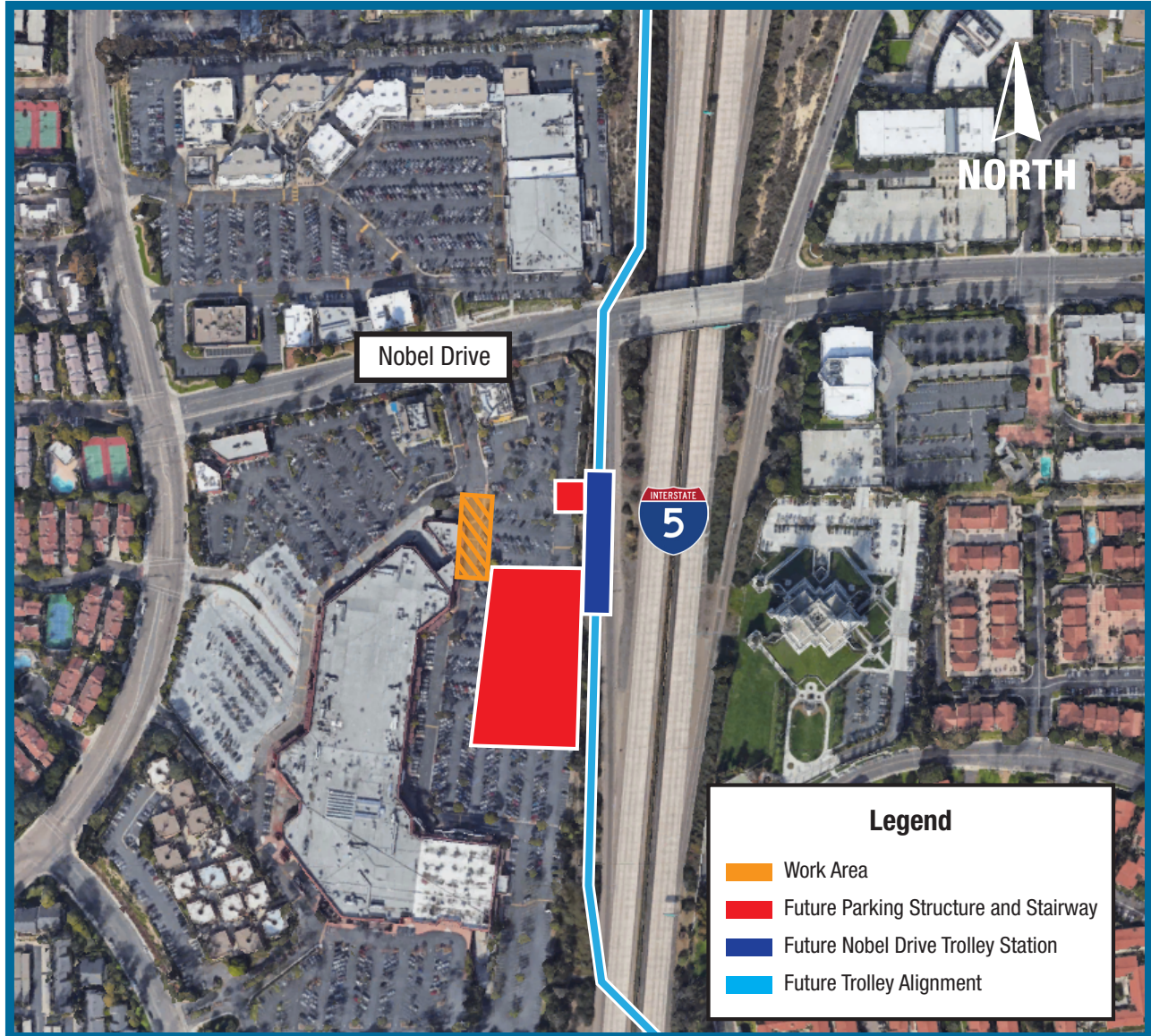
U.S. Department of Transportation  
Federal Transit Administration

## About the Project

The Mid-Coast Trolley project will extend UC San Diego Blue Line Trolley service from the Santa Fe Depot in Downtown San Diego to the University community, serving major activity centers such as Mission Bay, the VA Medical Center, UC San Diego, and University Towne Centre. Nine new stations will be constructed. Major construction work began in 2016, with service anticipated to begin in late 2021.

To be added to our project email list, visit [KeepSanDiegoMoving.com/MidCoastNotices](https://www.KeepSanDiegoMoving.com/MidCoastNotices).

## Work Area:



Si desea obtener información en español, por favor comuníquese al (619) 699-1950 o [pio@sandag.org](mailto:pio@sandag.org).

In compliance with the Americans with Disabilities Act (ADA), this document is available in alternate formats by contacting the SANDAG ADA Coordinator, the Director of Diversity and Equity, at (619) 699-1900 or (619) 699-1904 (TTY).