



MID-COAST TROLLEY

MID-COAST TROLLEY CONSTRUCTION UPDATE



APRIL 2020

CONSTRUCTION OF TROLLEY PARKING STRUCTURE AT LA JOLLA VILLAGE SQUARE

On Saturday, April 25, crews will begin pouring concrete for the future Nobel Drive Trolley Station parking structure, which is being constructed in the La Jolla Village Square parking area. Concrete pours will continue intermittently throughout construction.

Once complete, the parking structure will provide spaces for transit patrons and retail customers and will include a direct walkway to the Nobel Drive Trolley Station. Construction of the structure began in January 2020 and is anticipated to be completed in fall 2020.

What to Expect

- The concrete pours will typically begin at 12:05 a.m., but work hours may vary depending on the type of construction activity required
- Concrete pours are anticipated to take place two or three times per week
- Please expect noise
- Back up alarms and concrete trucks will be present
- Construction activities will take place within the fenced work area
- Access to businesses and shops will be maintained at all times

Construction schedules are subject to change due to weather, equipment, and other issues. Check KeepSanDiegoMoving.com/MidCoastNotices for regular schedule updates.

Update on Construction During COVID-19 Pandemic

The government has deemed public works construction activities to be essential, so SANDAG is working to keep active construction projects moving while prioritizing the health and safety of its partners, contractors, and communities. For additional information, please visit sandag.org/COVID-19.

For Transportation Solutions
During Construction

shift

Shift is your source for transportation solutions and construction information. Stay in the know and inform your commute at ShiftSanDiego.com.

#ShiftSanDiego



MidCoastTrolley
 @MidCoastTrolley
#MidCoastAlert

@SANDAGregion
 @SANDAGregion

KeepSanDiegoMoving.com/MidCoast |

Construction Hotline: (877) 379-0110 |

MidCoast@sandag.org



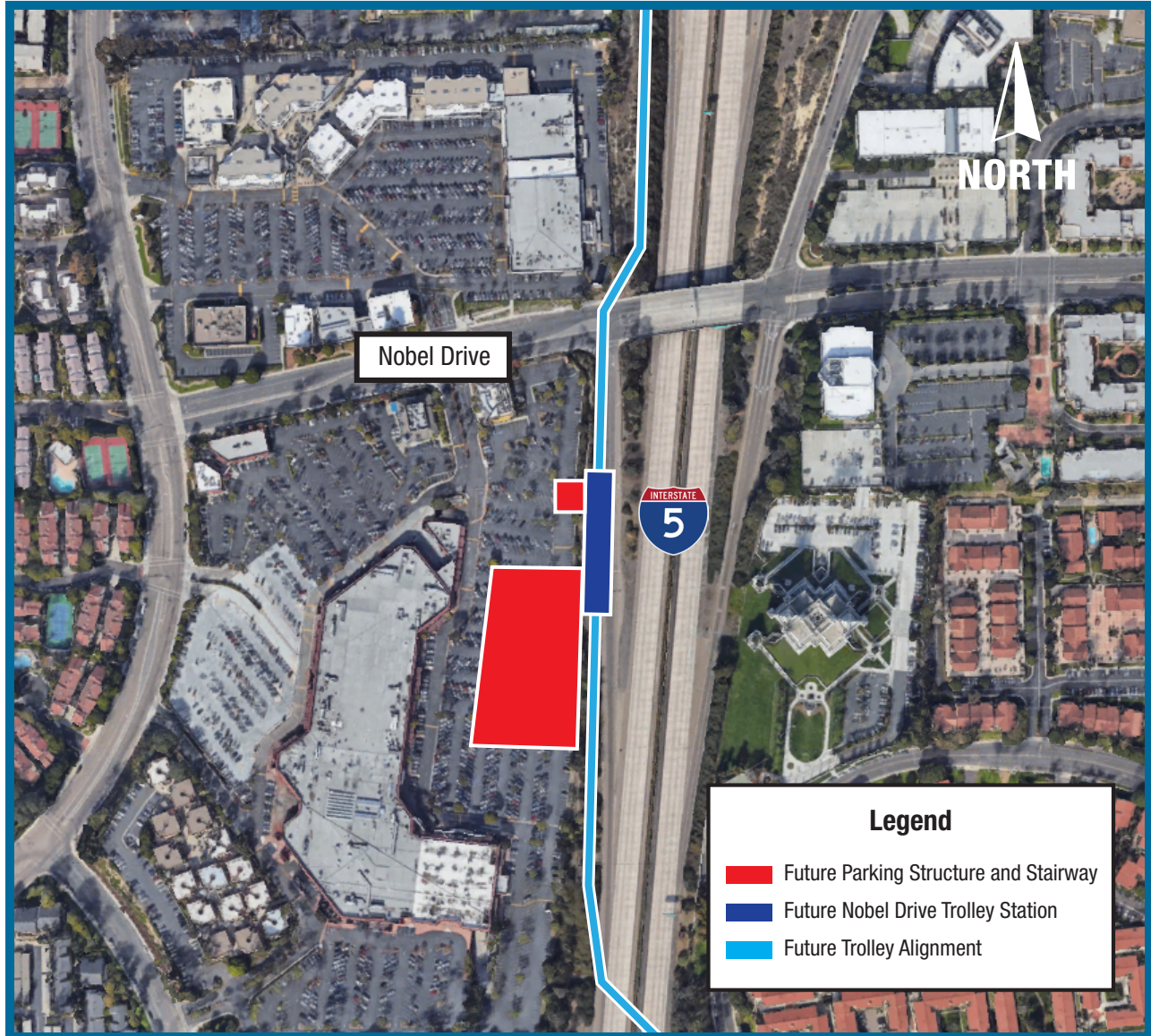
U.S. Department of Transportation
Federal Transit Administration

About the Project

The Mid-Coast Trolley project will extend UC San Diego Blue Line Trolley service from the Santa Fe Depot in Downtown San Diego to the University community, serving major activity centers such as Mission Bay, the VA Medical Center, UC San Diego, and University Towne Centre. Nine new stations will be constructed. Major construction work began in 2016, with service anticipated to begin in late 2021.

To be added to our project email list, visit [KeepSanDiegoMoving.com/MidCoastNotices](https://www.KeepSanDiegoMoving.com/MidCoastNotices).

Work Area:



Si desea obtener información en español, por favor comuníquese al (619) 699-1950 o pio@sandag.org.

In compliance with the Americans with Disabilities Act (ADA), this document is available in alternate formats by contacting the SANDAG ADA Coordinator, the Director of Diversity and Equity, at (619) 699-1900 or (619) 699-1904 (TTY).