



MID-COAST TROLLEY

# MID-COAST TROLLEY CONSTRUCTION UPDATE



MARCH 2020

## OVERNIGHT CLOSURES OF I-5

This March, a series of temporary overnight closures will be in effect on Interstate 5 (I-5) for crews to remove falsework—or temporary support structures—from the Trolley overcrossing south of Nobel Drive.

Closures on northbound and southbound I-5 lanes will begin on March 2 and are anticipated to continue through March 12. Additional lane closures may be required and notice will be provided beforehand.

Motorists should plan to take alternate routes to avoid potential congestion, as delays are expected during this closure.

### The following closures will be in place:

#### Beginning Monday, March 2 through Thursday, March 5:

- Overnight full closures of northbound I-5 lanes from State Route 52 (SR 52) to Genesee Avenue
- Lane reductions may be in place on southbound I-5 from the I-5/Interstate 805 (I-805) Interchange to Gilman Drive/La Jolla Colony Drive
- Work and closure hours will be from 9:30 p.m. to 5 a.m. each night

*\*Please note, if crews complete work on northbound I-5 lanes ahead of schedule, closures of southbound I-5 may begin the week of March 1. Additional notification will be issued if the closure schedule is revised.*

#### Beginning Sunday, March 8 through Thursday, March 12:

- Overnight full closures of southbound I-5 lanes from the I-5/I-805 Interchange to Gilman Drive/La Jolla Colony Drive
- Lane reductions may be in place on northbound I-5 from SR 52 to Genesee Avenue
- Work and closure hours will be from 9:30 p.m. to 5 a.m. each night

**Construction schedules are subject to change.**

For Transportation Solutions  
During Construction

### shift

Shift is your source for transportation solutions and construction information. Stay in the know and inform your commute at [ShiftSanDiego.com](https://ShiftSanDiego.com).

#ShiftSanDiego



MidCoastTrolley  
 @MidCoastTrolley  
#MidCoastAlert

@SANDAGregion  
 @SANDAGregion

[KeepSanDiegoMoving.com/MidCoast](https://KeepSanDiegoMoving.com/MidCoast)

Construction Hotline: (877) 379-0110

[MidCoast@sandag.org](mailto:MidCoast@sandag.org)



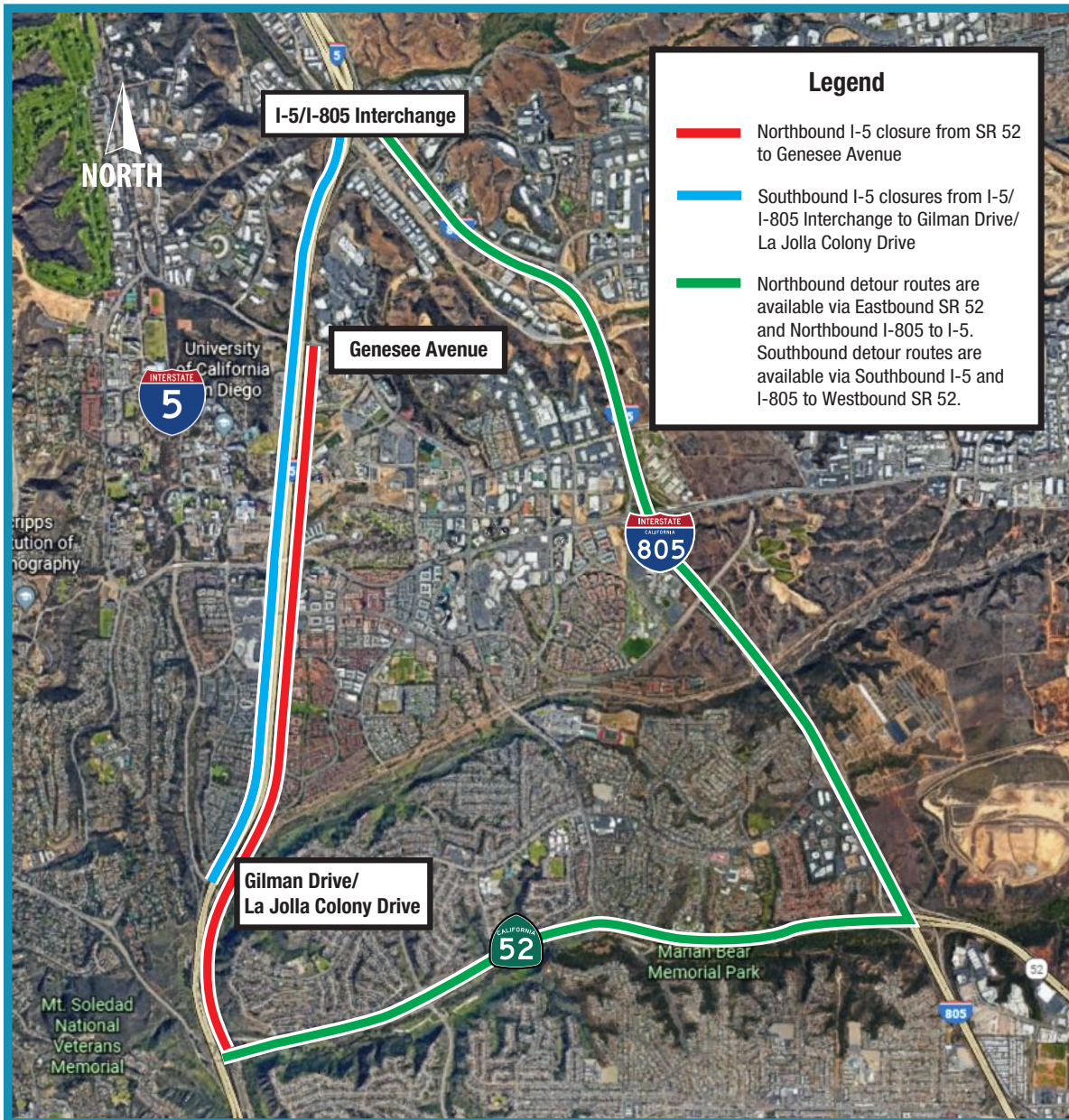
U.S. Department of Transportation  
Federal Transit Administration

## About the Project

The Mid-Coast Trolley project will extend UC San Diego Blue Line Trolley service from the Santa Fe Depot in Downtown San Diego to the University community, serving major activity centers such as Mission Bay, the VA Medical Center, UC San Diego, and University Towne Centre. Nine new stations will be constructed. Major construction work began in 2016, with service anticipated to begin in late 2021.

To be added to our project email list, please go to [KeepSanDiegoMoving.com/MidCoastNotices](http://KeepSanDiegoMoving.com/MidCoastNotices).

## Work Area:



Si desea obtener información en español, por favor comuníquese al (619) 699-1950 o [pio@sandag.org](mailto:pio@sandag.org).

In compliance with the Americans with Disabilities Act (ADA), this document is available in alternate formats by contacting the SANDAG ADA Coordinator, the Director of Administration, at (619) 699-1900 or (619) 699-1904 (TTY).