



MID-COAST TROLLEY

MID-COAST TROLLEY CONSTRUCTION UPDATE



FALL 2018

UPCOMING OVERNIGHT CLOSURES OF I-5 FOR GILMAN DRIVE BRIDGE PROJECT

To complete the process of removing falsework, the temporary structures used to support the Gilman Drive bridge during construction, closures of Interstate 5 will be required.

Overnight closures will be required to complete the falsework removal process through fall 2018.

Starting the week of November 4, there will be a series of temporary overnight closures on northbound Interstate 5 as crews perform falsework removal on the Gilman Drive Bridge.

Motorists should plan to take alternate routes to avoid potential congestion, as significant delays are expected during these closures.

The following closures will be in place:

These closures are subject to change at any time

Sunday, November 4, through Thursday, November 8:

- Full closure of northbound lanes from La Jolla Village Drive to Genesee Avenue.
- Work hours are 10:30 p.m. to 5 a.m. each night, unless noted otherwise.

Tuesday, November 13, through Thursday, November 15:

- Full closure of northbound lanes from La Jolla Village Drive to Genesee Avenue.
- Work hours are 10:30 p.m. to 5 a.m. each night, unless noted otherwise.

For Transportation Solutions
During Construction

shift

Shift is your source for transportation solutions and construction information. Stay in the know and inform your commute at ShiftSanDiego.com.

#ShiftSanDiego



MidCoastTrolley
 @MidCoastTrolley
#MidCoastAlert

@SANDAGregion
 @SANDAGregion

KeepSanDiegoMoving.com/MidCoast

Construction Hotline: (877) 379-0110

MidCoast@sandag.org



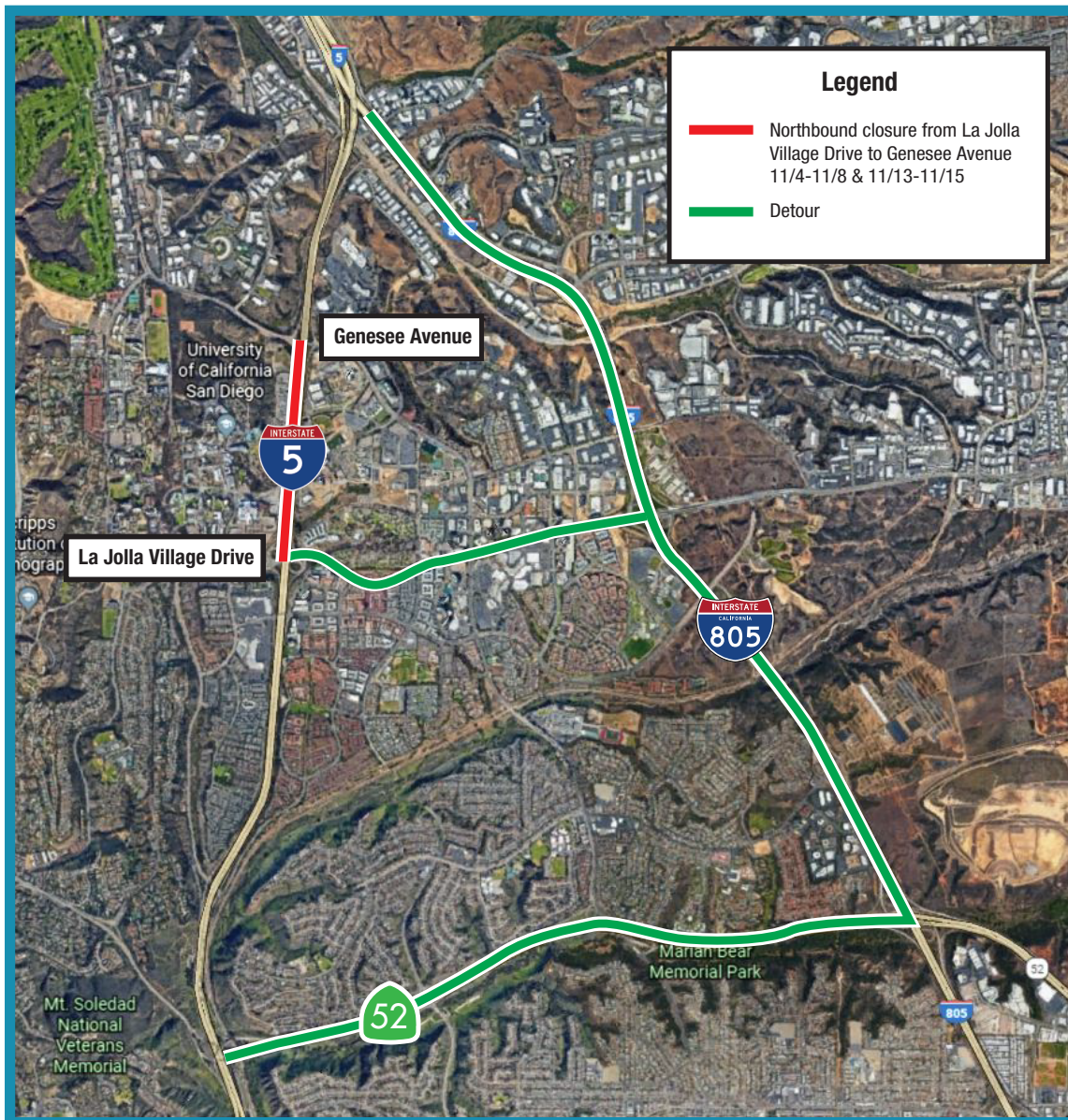
U.S. Department of Transportation
Federal Transit Administration

About the Project

Work on the Gilman Drive Bridge began in late 2016 on Interstate 5, just north of La Jolla Village Drive. Crews have installed temporary barricades near Gilman Drive that will remain in place until the project is complete. The new bridge will connect the east and west campus of UC San Diego between Gilman Drive and Medical Center Drive, while spanning over Interstate 5.

Learn more at KeepSanDiegoMoving.com/GilmanDrive

Work Areas:



Si desea obtener información en español, por favor comuníquese al (619) 699-1950 o pio@sandag.org.

In compliance with the Americans with Disabilities Act (ADA), this document is available in alternate formats by contacting the SANDAG ADA Coordinator, the Director of Administration, at (619) 699-1900 or (619) 699-1904 (TTY).