



MID-COAST TROLLEY

MID-COAST TROLLEY CONSTRUCTION UPDATE



APRIL 2021

UPCOMING GENESEE AVENUE PAVING

On Friday, April 16, crews will begin the process of paving and striping Genesee Avenue. The construction activities will continue for approximately four weeks and will require full closures of Genesee Avenue between Regents Road and Nobel Drive.

Crews will pave Genesee Avenue in sections. Following the paving activities, crews will install traffic signals and stripe the roadway. Please expect noise as this work is completed. We appreciate your patience, and crews will minimize impacts as much as possible.

This work begins the final phase of roadway construction activities on Genesee Avenue for the Mid-Coast Trolley project.

What to Expect

- Beginning Friday, April 16, and continuing for approximately two weeks, full closures of Genesee Avenue will be in place for paving activities
 - Typical closure and work hours will be Sundays through Thursdays, from 8 p.m. at night through 5 p.m. the following day
 - Please note that the first night of closures is scheduled on a Friday to accommodate a local event on Genesee Avenue
 - Paving activities will be scheduled in phased sections along Genesee Avenue
 - **A full closure of the Genesee Avenue and La Jolla Village Drive intersection will be in place during one of the phased sections**
 - Please see map on the following page for the tentative closure schedule
- Following the paving activities, nighttime full closures of Genesee Avenue will be in place for approximately two weeks for traffic signal installation and striping activities
 - Closure and work hours will be Sundays through Thursdays, from 8 p.m. to 5 a.m. each night
- Driveway access will be maintained for residential properties and schools
- Please use caution when traveling in the area and follow signage

Construction schedules are subject to change.

For Transportation Solutions During Construction



shift

Shift is your source for transportation solutions and construction information. Stay in the know and inform your commute at **ShiftSanDiego.com**.

#ShiftSanDiego




Update on Construction During COVID-19 Pandemic

The government has deemed public works construction activities to be essential, so SANDAG is working to keep active construction projects moving while prioritizing the health and safety of its partners, contractors, and communities. For additional information, please visit sandag.org/COVID-19.

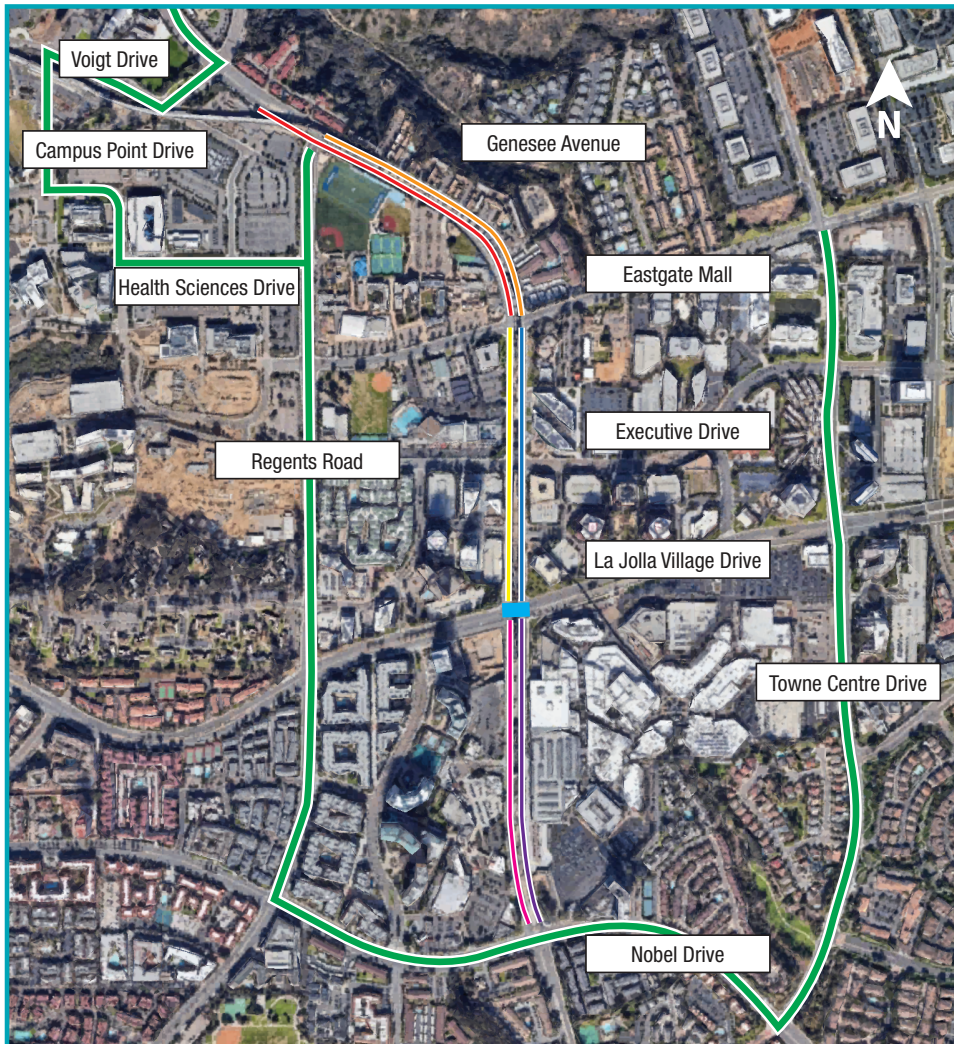


About the Mid-Coast Trolley Project

The Mid-Coast Trolley project will extend UC San Diego Blue Line Trolley service from the Santa Fe Depot in Downtown San Diego to the University community, serving major activity centers such as Mission Bay, the VA Medical Center, UC San Diego, and University Towne Centre. Nine new stations will be constructed. Major construction work began in 2016, with service anticipated to begin in late 2021.

To be added to our project email list, visit KeepSanDiegoMoving.com/MidCoastNotices.

Work Area and Closure Schedule for Paving Activities:



Legend

Phased full closures will be in place from 8 p.m. through 5 p.m. the following day. Scheduled closure dates for each highlighted section of Genesee Avenue are outlined below:

- █ 4/16-4/17
- █ 4/18-4/19
- █ **Intersection closure 4/19-4/20**
- █ 4/20-4/21
- █ 4/21-4/22
- █ 4/22-4/23
- █ 4/25-4/26
- █ Detour Routes via Regents Road and Towne Centre Drive

Si desea obtener información en español, por favor comuníquese al (619) 699-1950 o pio@sandag.org.

In compliance with the Americans with Disabilities Act (ADA), this document is available in alternate formats by contacting the SANDAG ADA Coordinator, the Director of Diversity and Equity, at (619) 699-1900 or (619) 699-1904 (TTY).