



MID-COAST TROLLEY

MID-COAST TROLLEY CONSTRUCTION UPDATE



SPRING 2020

PARTIAL INTERSECTION CLOSURES AT GENESEE AVENUE AND LA JOLLA VILLAGE DRIVE

Beginning Sunday, April 26 and continuing through Tuesday, April 28, there will be partial closures of the intersection at Genesee Avenue and La Jolla Village Drive. During the closures, crews will remove overhangs—temporary structures used to support concrete pours—and perform exterior finish work on the Trolley bridge. Work and closure hours will be from 9 p.m. to 5 a.m. each night.

These closures are scheduled to continue the following week on Sunday, May 3 and Monday, May 4.

Traffic controls and detour routes will be posted. Motorists should take alternate routes to avoid potential congestion. Please heed all traffic signs and use caution when traveling near the work area.

What to Expect:

- Full closure of southbound Genesee Avenue between Executive Drive and Nobel Drive
- One lane open on northbound Genesee Avenue between Nobel Drive and Executive Drive
- Full closure of westbound and eastbound La Jolla Village Drive between Genesee Avenue and Regents Garden Row/Coste Verde Boulevard
- No westbound or eastbound access through the intersection of Genesee Avenue and La Jolla Village Drive

Construction schedules are subject to change.

Update on Construction During COVID-19 Pandemic

The government has deemed public works construction activities to be essential, so SANDAG is working to keep active construction projects moving while prioritizing the health and safety of its partners, contractors, and communities. For additional information, please visit sandag.org/COVID-19.

For Transportation Solutions
During Construction

shift

Shift is your source for transportation solutions and construction information. Stay in the know and inform your commute at ShiftSanDiego.com.

#ShiftSanDiego



MidCoastTrolley
 @MidCoastTrolley
#MidCoastAlert

@SANDAGregion
 @SANDAGregion

KeepSanDiegoMoving.com/MidCoast |

Construction Hotline: (877) 379-0110 |

MidCoast@sandag.org



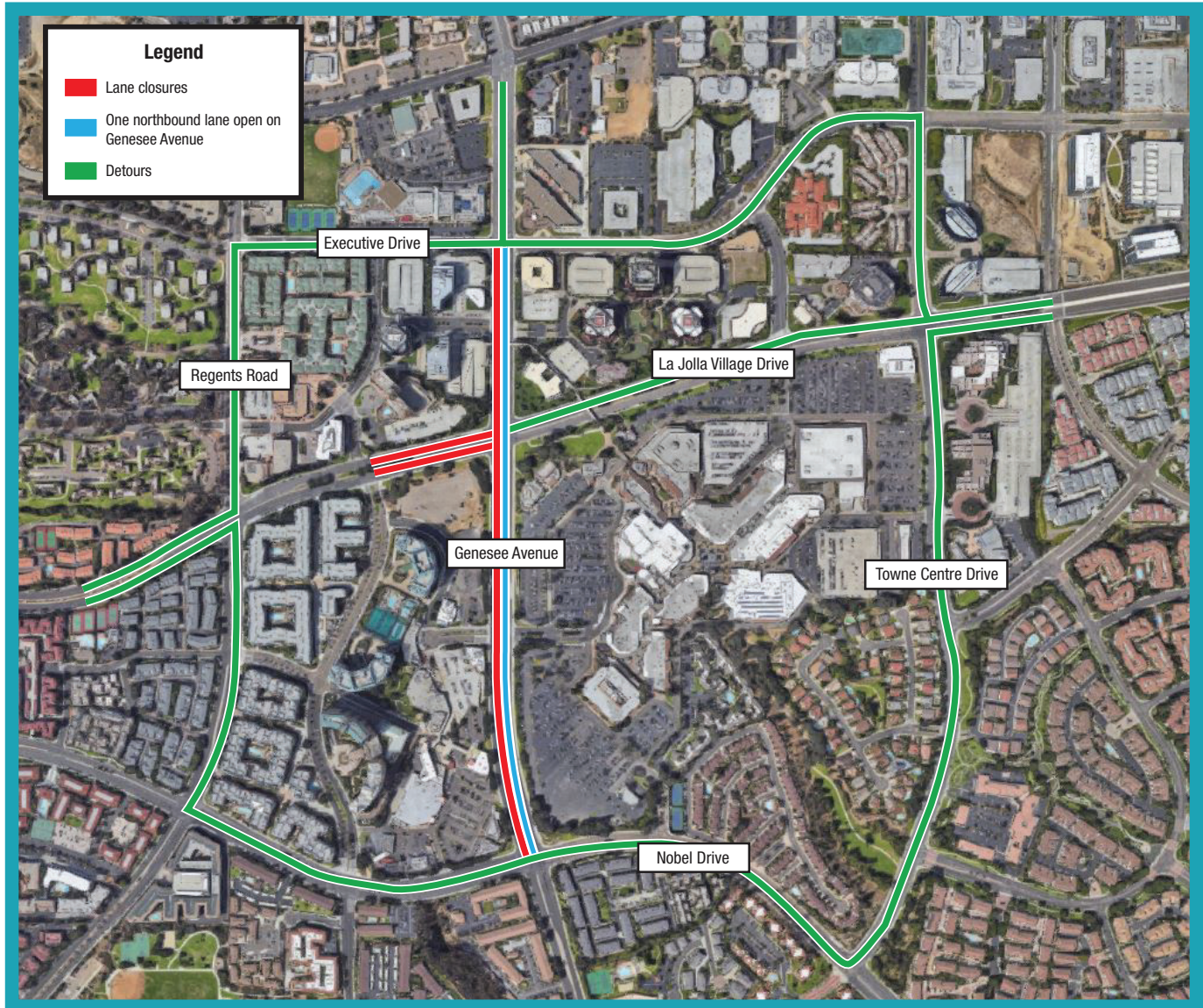
U.S. Department of Transportation
Federal Transit Administration

About the Project

The Mid-Coast Trolley project will extend UC San Diego Blue Line Trolley service from the Santa Fe Depot in Downtown San Diego to the University community, serving major activity centers such as Mission Bay, the VA Medical Center, UC San Diego, and University Towne Centre. Nine new stations will be constructed. Major construction work began in 2016, with service anticipated to begin in late 2021.

To be added to our project email list, please go to [KeepSanDiegoMoving.com/MidCoastNotices](https://www.KeepSanDiegoMoving.com/MidCoastNotices).

Work Areas:



Si desea obtener información en español, por favor comuníquese al (619) 699-1950 o pio@sandag.org.

In compliance with the Americans with Disabilities Act (ADA), this document is available in alternate formats by contacting the SANDAG ADA Coordinator, the Director of Diversity and Equity, at (619) 699-1900 or (619) 699-1904 (TTY).