



MID-COAST TROLLEY EXTENSION

# CONNECTING

THE SAN DIEGO REGION

Clairemont Community Planning Group  
May 9, 2017



MID-COAST CORRIDOR  
TRANSIT PROJECT

# Project Overview



11-mile LRT extension from Old Town to UTC

Nine New Stations

Four At-Grade Stations

- *Tecolote Road*
- *Clairemont Drive*
- *Balboa Avenue*
- *VA Medical Center*

Five Aerial Stations

- *Nobel Drive*
- *Pepper Canyon (UC San Diego)*
- *Voigt Drive (UC San Diego)*
- *Executive Drive*
- *UTC Transit Center*

21,000 daily boardings north of Old Town



# Construction Overview



Relocate  
utilities



Build supporting  
infrastructure



Construct stations,  
bridges and viaduct

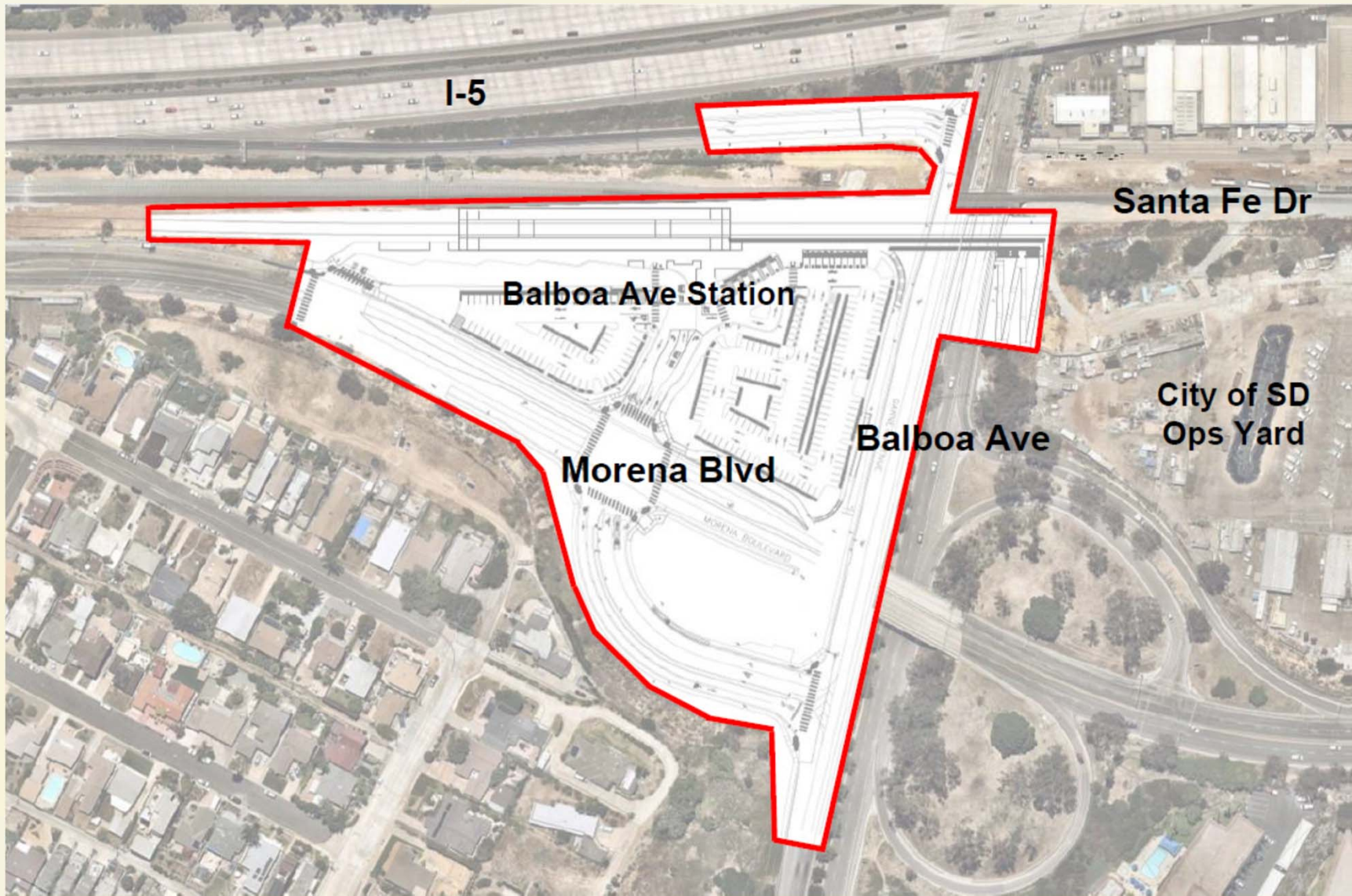


Install track  
and power



Testing and  
start-up

# Project Limits: Mid-Coast / Balboa Avenue Station



# Balboa Avenue Station Site

- 232 total parking spaces
- Kiss-and-ride drop-off / pick-up area
- 5 bus bays within station + 1-2 along Morena Blvd
- Pedestrian access from both sides of Balboa Ave
- Electric Vehicle Charging Stations
- Bicycle parking facilities

Balboa Avenue Station - Site Plan



# Balboa Avenue Station Site Access



- ← Pedestrian
- ← Bus Route / Stop

# Balboa Station – Draft Mobility Hub Features

- Facilitate multimodal transfer connections and improve the transit waiting experience



- Improve connections from the station to PB through the use of motorized and electric shared services



Project website: [SDForward.com/MidCoastMobilityHubs](http://SDForward.com/MidCoastMobilityHubs)

# Balboa Station – Draft Mobility Hub Features

- Implement biking and walking improvements that compliment the suite of motorized shared services



- Provide supporting amenities at transit station and within the 5-minute access sheds



Project website: [SDForward.com/MidCoastMobilityHubs](http://SDForward.com/MidCoastMobilityHubs)



# Balboa Avenue Station Aerial



# Heavy Rail Bridge Aerial



# Stay Informed

## Web page

[KeepSanDiegoMoving.com/MidCoast](http://KeepSanDiegoMoving.com/MidCoast)

## E-mail

[MidCoast@sandag.org](mailto:MidCoast@sandag.org)

## Phone

(877) 379-0110



MidCoast Trolley



@MidCoastTrolley

**shift**

a change in direction

# SANDAG Presenters

Frank Owsiany P.E., Deputy Project Director Mid-Coast

Pete d'Ablaing P.E., Project Manager Segment 1 & 2

Questions?