

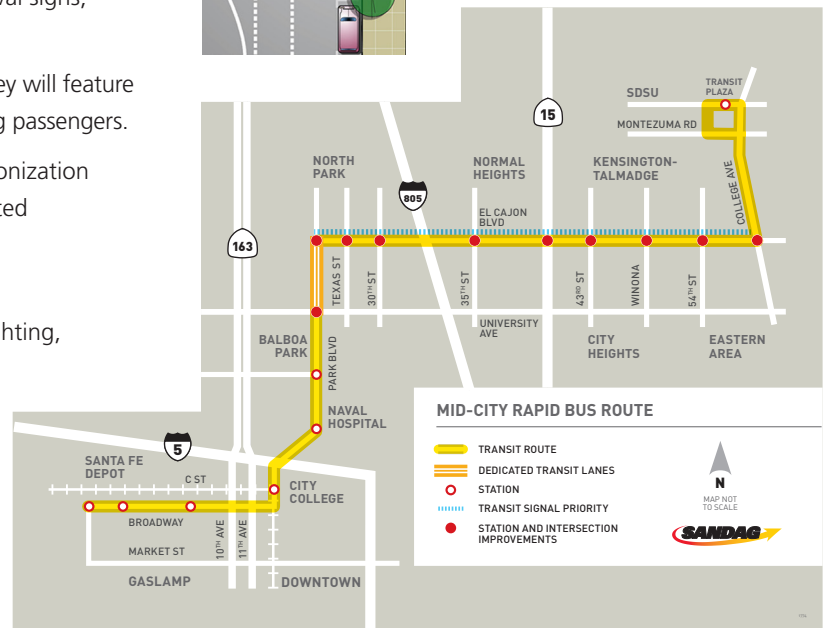
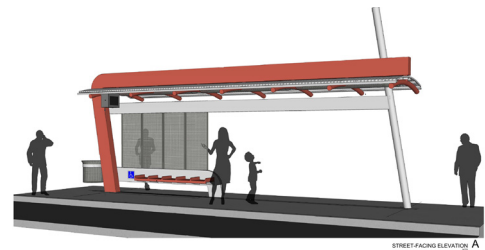
# Mid-City Rapid



Mid-City Rapid will run between San Diego State University and Downtown San Diego through some of the city's oldest and most densely populated communities. This new bus line will offer increased service frequency, faster travel times, and enhanced amenities.

## Project Highlights

- Mid-City Rapid will run every 10 minutes during weekday peak hours and every 15 minutes during weekday off-peak hours and on weekends.
- Hours of operation will be 5 a.m. to 1 a.m., seven days a week.
- Eighteen new low-floor, natural gas-powered vehicles will serve the route.
- Buses, signage, and stations will all feature unique branding to differentiate the service from other bus routes.
- New stations with customized shelters, real-time bus arrival signs, and improved sidewalks will be built.
- The stations will be fully accessible to the disabled, and they will feature curb pop-outs, giving more room for waiting and boarding passengers.
- A new transit signal priority system and improved synchronization of traffic lights on El Cajon Boulevard, along with dedicated transit lanes on Park Boulevard, will improve bus speed and reliability.
- Other street upgrades include new landscaping, street lighting, and traffic signals.
- The Mid-City Rapid also will improve service to Balboa Park and the San Diego Zoo.



## To Learn More

Visit [KeepSanDiegoMoving.com/MidCityRapid](http://KeepSanDiegoMoving.com/MidCityRapid) or call the project information line at (877) 379-0110.