

# San Dieguito Double Track and Special Events Platform Project

# WELCOME

## PLEASE SIGN IN

Tonight's meeting is an open house format. Please visit each topic station for detailed project information.

---

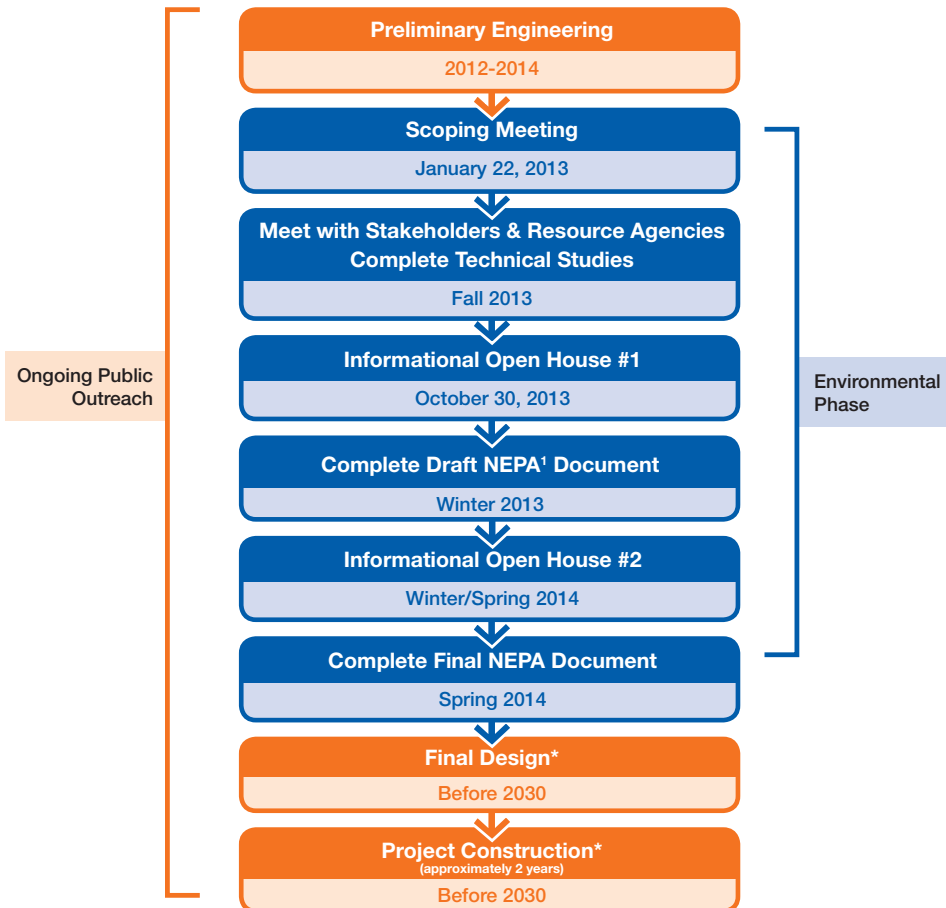
No formal presentations.  
Welcoming remarks at 6:30 p.m.

---

Please visit the comment table if you wish to provide written comments on the project.

## Thanks for attending!

## Project Timeline



# WELCOME



Wednesday, October 30, 2013  
6:00 p.m. – 8:00 p.m.

**Powerhouse Community Center**  
1658 Coast Blvd. • Del Mar, CA 92014

1. As a railroad project, this project is subject to federal environmental review under the National Environmental Policy Act (NEPA)

\*Project is funded through engineering and environmental phases only. Funding for design and construction TBD.

[KeepSanDiegoMoving.com/SDDT](http://KeepSanDiegoMoving.com/SDDT)



# San Dieguito Double Track and Special Events Platform Project

## Open House

October 30, 2013

### Thank you for joining us to learn about the San Dieguito Double Track and Special Events Platform Project.

Tonight's public information open house will offer members of the public the opportunity to learn more about the preferred track, bridge and special events platform alternatives for the future rail improvement project and to ask project team members questions. The meeting is an open house format, so please visit each topic station for detailed project information.

The San Dieguito Double Track and Special Events Platform Project will add approximately one mile of second main track from Solana Beach into Del Mar, replace the nearly 100-year-old wooden trestle rail bridge over the San Dieguito River, and construct a special events platform on the west side of the fairgrounds to reduce traffic congestion during event days. SANDAG is also working to incorporate a safe and legal public undercrossing under the south end of the future railway bridge as part of this project.

The project is funded through preliminary engineering and environmental review and is not yet funded for construction. SANDAG estimates construction before 2030 to meet future service level projections.

This project is one part of a comprehensive package of highway, rail and transit, and coastal access improvements planned for the Interstate 5 North Coast Corridor, which spans 27 miles from Oceanside to La Jolla.

**Please visit [KeepSanDiegoMoving.com/SDDT](http://KeepSanDiegoMoving.com/SDDT) for more information and to sign up for project updates.**

## TONIGHT'S MEETING

### 6:00 p.m. Open House Begins

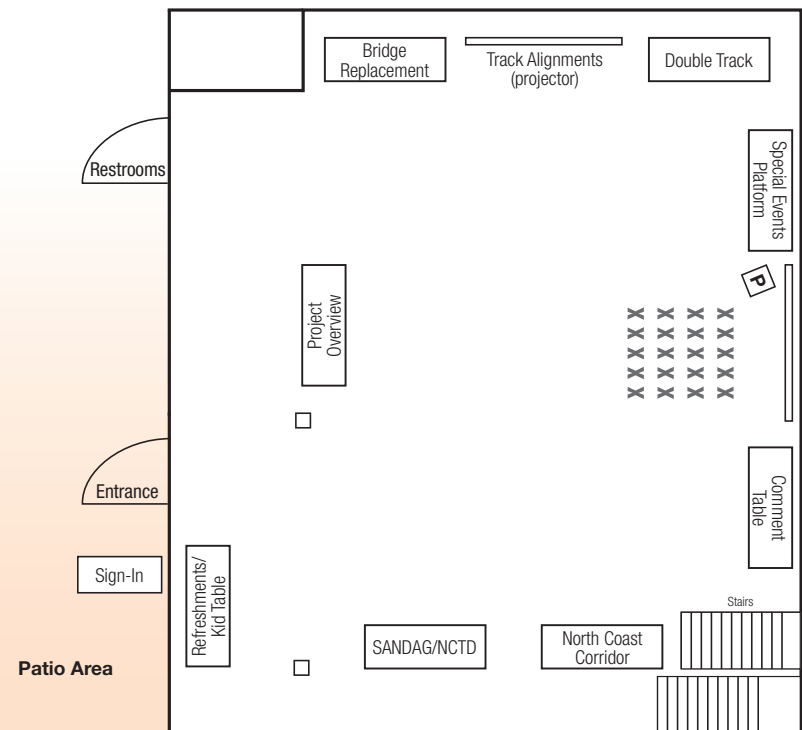
Please visit each topic station for more information about the project

### 6:15 p.m. Welcome Remarks

Hon. Jack Dale • Chairman, SANDAG Board of Directors

### 6:30 p.m. Open House Continues

### 8:00 p.m. Open House Concludes



Printed on recycled paper



# San Dieguito Double Track and Special Events Platform Project

## Project Purpose and Need

To enhance rail services and provide an attractive alternative to solo driving in the busy I-5 corridor and to:

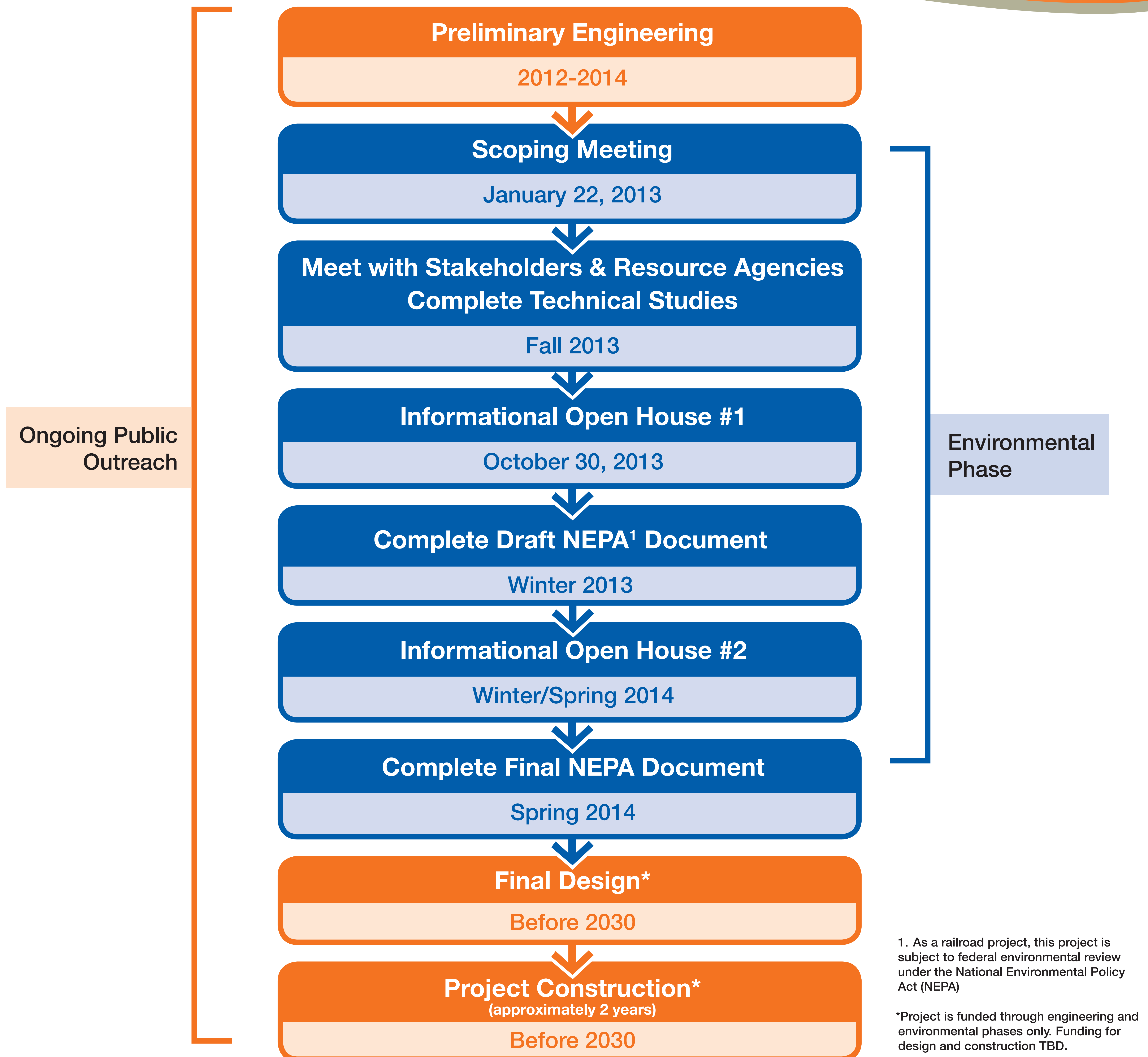
- Improve transit reliability (on-time trains)
- Increase rail capacity (passengers and goods)
- Increase the level of service (more trains)
- Provide direct service to a major activity center
- Improve lagoon flows and coastal habitat





# San Dieguito Double Track and Special Events Platform Project

## Project Timeline



1. As a railroad project, this project is subject to federal environmental review under the National Environmental Policy Act (NEPA)

\*Project is funded through engineering and environmental phases only. Funding for design and construction TBD.



## Technical Studies to be Completed

---

- Cultural Resources
- Biological Resources
- Noise/Vibration Impacts
- Air Quality and Greenhouse Gas (GHG) Emission
- Visual Impact Assessment (VIA)
- Environmental Justice
- Jurisdictional Delineation
- Hydrology, Flow and Water Quality
- Geology and Soils
- Sediment Transport and Scour



# San Dieguito Double Track and Special Events Platform Project

## Double Track Overview

- Adds a one-mile stretch of second mainline track within existing railroad right-of-way
- Results in a 2.8-mile segment of double track
- Maintains Via de la Valle and Camino Del Mar overpasses
- Raises track to meet federal standards for flood events
- Preferred track alignment is east of current alignment





## Special Events Platform Overview

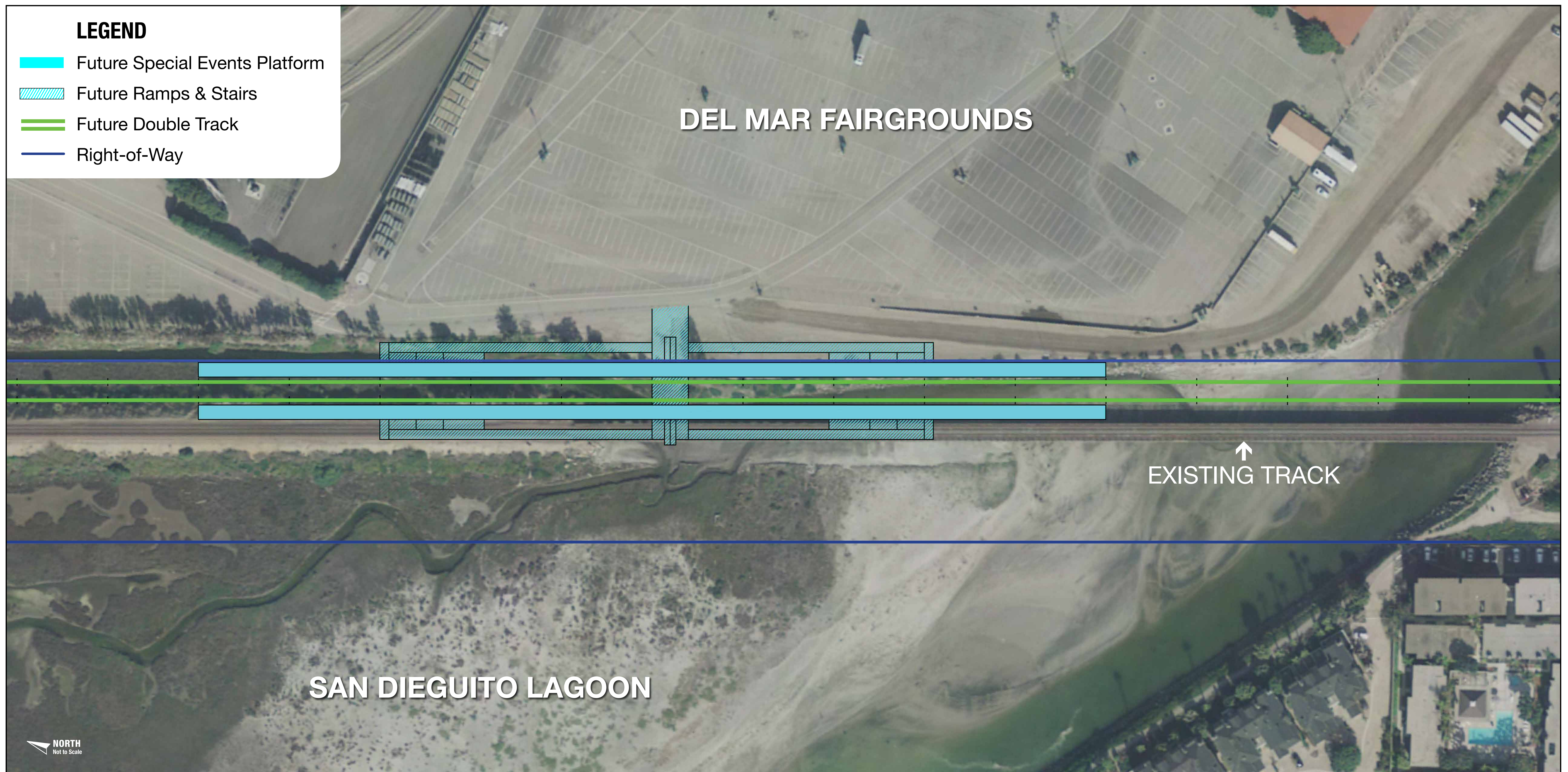
---

- Adds a new special events platform – no station planned
- Offers direct Amtrak and COASTER service to fairgrounds
- Preferred alternative is a side-loading platform located on each side of the railroad tracks
- Allows boarding from both tracks
- Includes minimal features – no furnishings or elevated structures planned in order to minimize visual impacts
- Requires a 1,000-foot-long platform to accommodate ten-car passenger trains during special events



# San Dieguito Double Track and Special Events Platform Project

## Preferred Special Events Platform Location

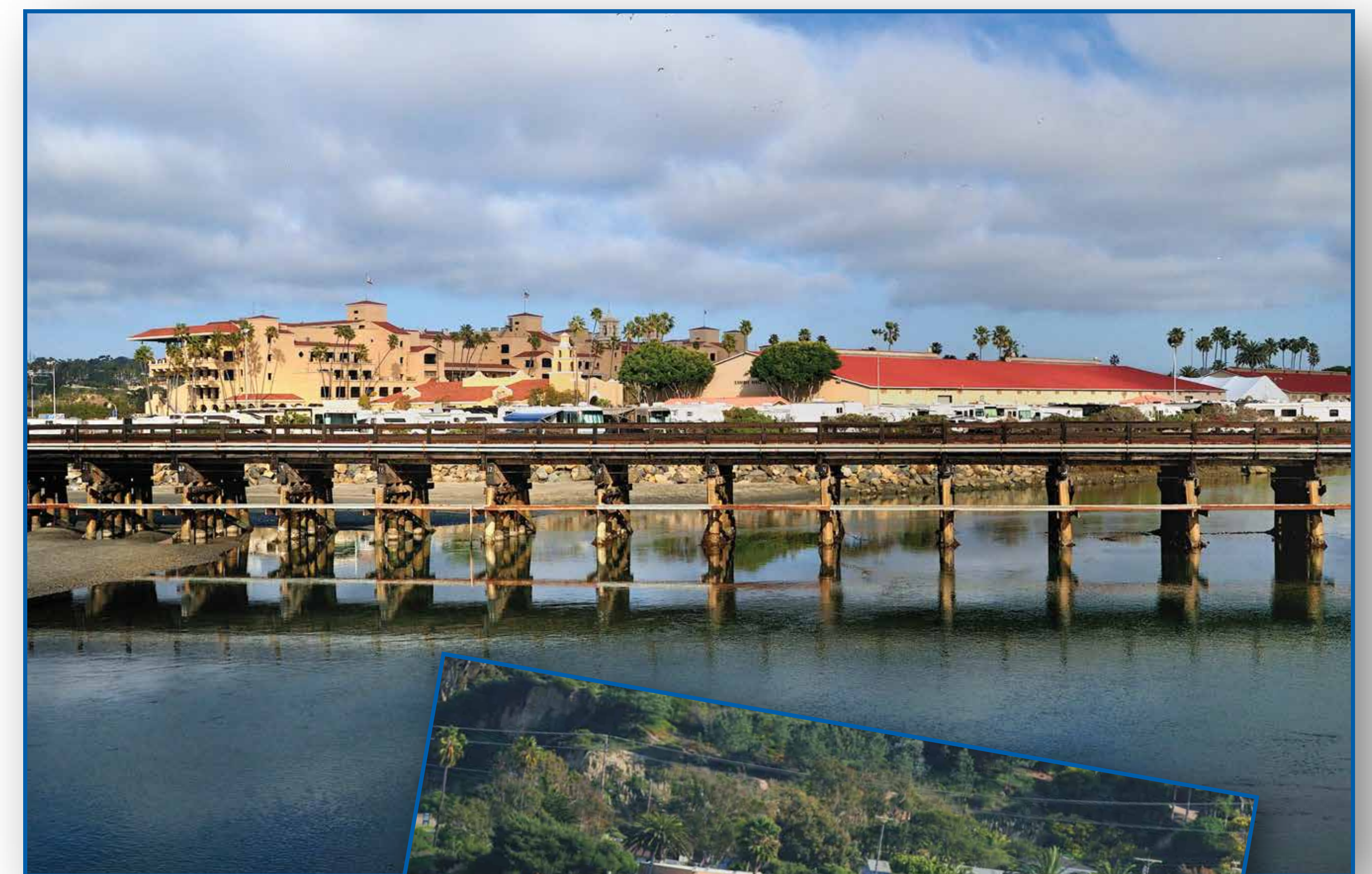




# San Dieguito Double Track and Special Events Platform Project

## Bridge Replacement Overview

- Replaces 97-year-old wooden trestle bridge in existing railroad right-of-way
- Reduces costly maintenance
- Includes two tracks
- Raises bridge to meet federal standards for flood events
- Improves tidal flow and lagoon health by widening column spacing
- Maintains service during construction – built in phases

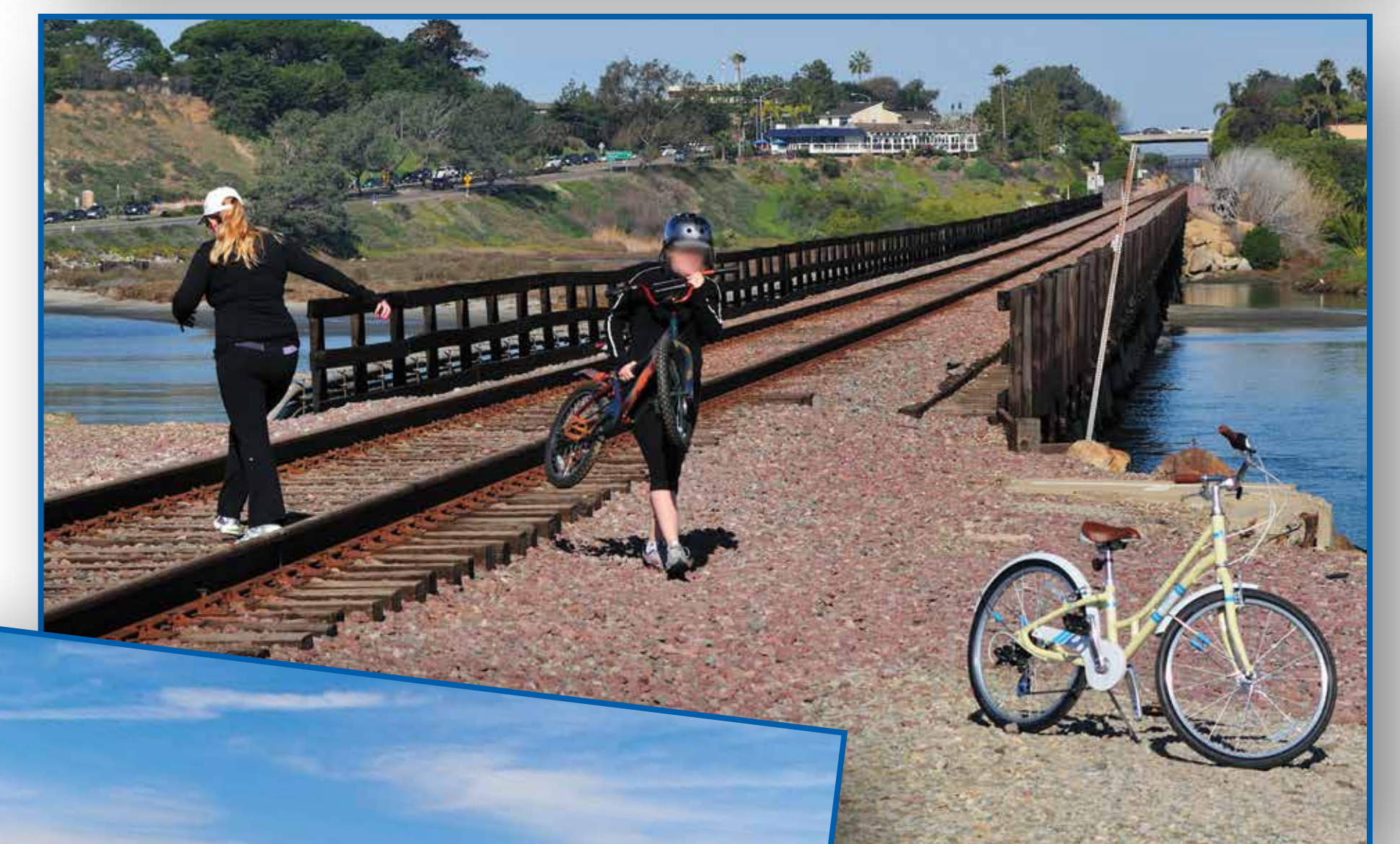




# San Dieguito Double Track and Special Events Platform Project

## San Dieguito Rail Bridge Bike/Pedestrian Undercrossing Improvements

- Provides a safe and legal public undercrossing under the south end of the planned rail bridge
- Improves public access to the coast and lagoon for bicyclists and pedestrians
- Raises bike/pedestrian path under bridge to avoid high tide and flood impacts

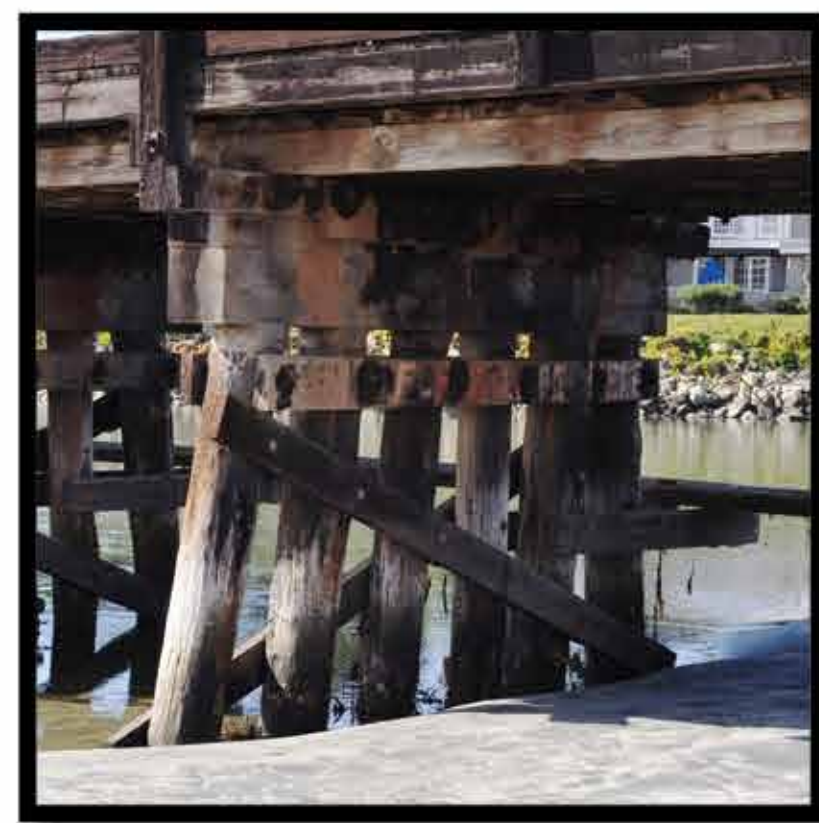
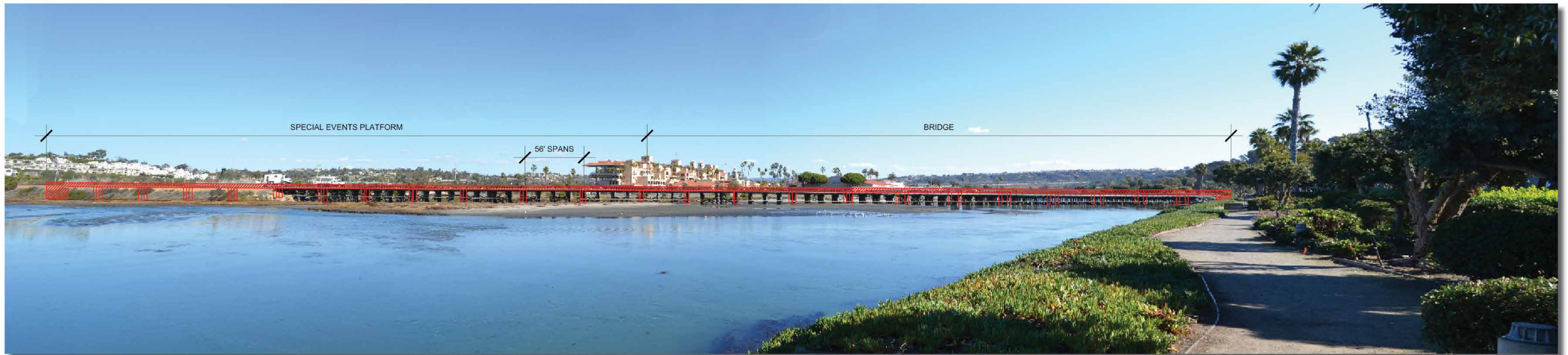


*Rail Bridge Undercrossing in Oceanside*



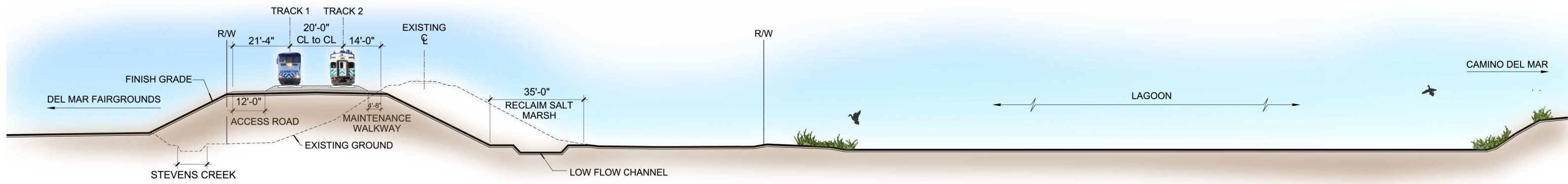
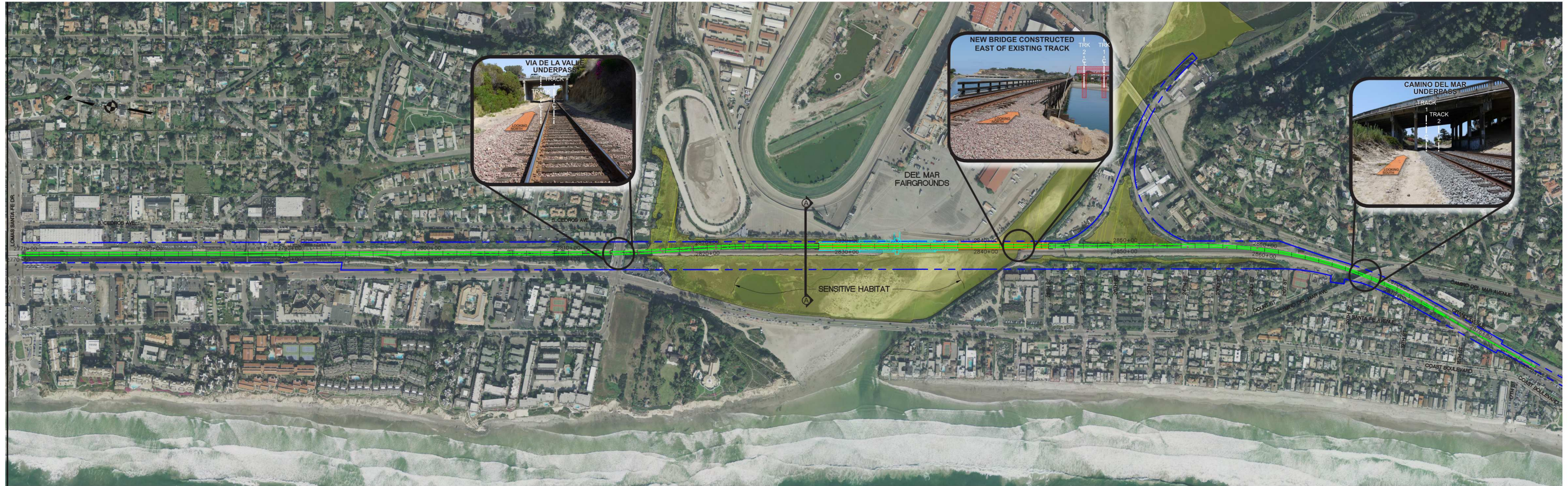
# San Dieguito Double Track and Special Events Platform Project

## San Dieguito Rail Bridge



Existing Bridge

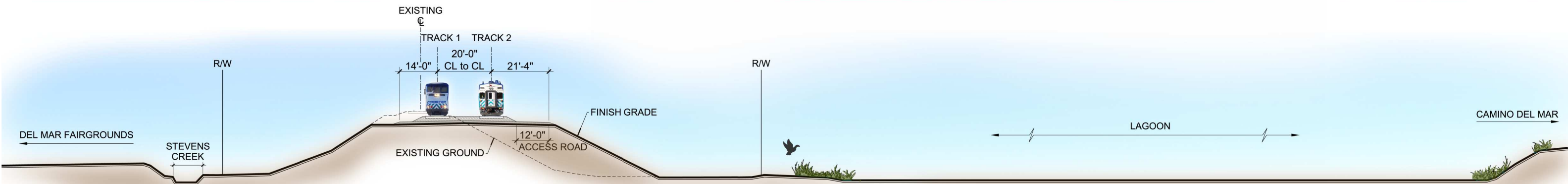
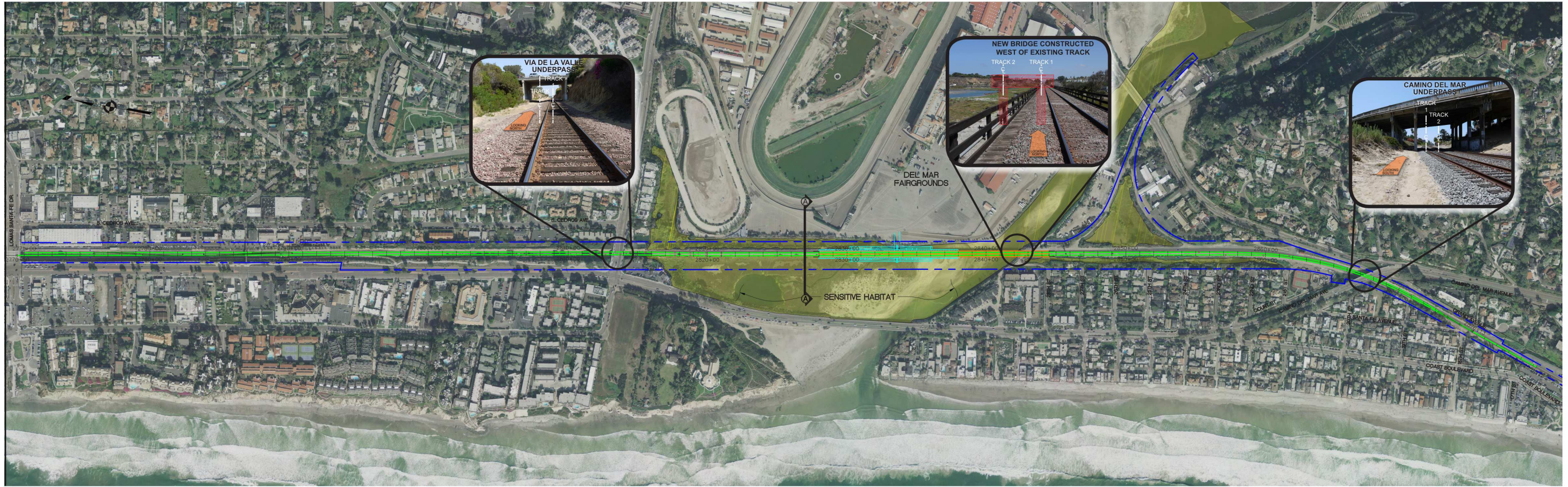




**EAST SIDE LOADING - BERM SECTION**

SCALE 1:10

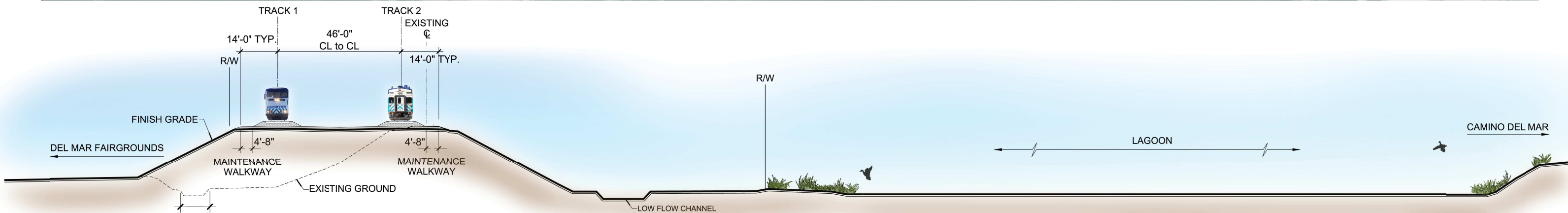




**WEST SIDE LOADING - BERM SECTION**

SCALE 1:10





**EAST CENTER LOADING - BERM SECTION**

SCALE 1:10



# San Dieguito Double Track and Special Events Platform Project

## Open House

### COMMENT SLIP

PLEASE PRINT CLEARLY

Name \_\_\_\_\_ Date \_\_\_\_\_

Address \_\_\_\_\_

Phone \_\_\_\_\_ Email \_\_\_\_\_

I would like to receive project updates via email.  Yes  No

SANDAG will review and share public comments with the Federal Railroad Administration, the project's lead. Comments can also be emailed to: Tim DeWitt, Project Manager, at [Tim.DeWitt@sandag.org](mailto:Tim.DeWitt@sandag.org).

#### Project Comments:

---

---

---

---

---

---

---

---

---

---

---

---

---

---

---

---

---

---

---

---

---

---

---

---



# Proyecto de Dobles Vías y Plataforma de Eventos Especiales de San Dieguito

## Junta Comunitaria

### HOJA DE COMENTARIOS

*POR FAVOR ESCRIBA CLARAMENTE*

Nombre \_\_\_\_\_ Fecha \_\_\_\_\_

Dirección \_\_\_\_\_

Teléfono \_\_\_\_\_ Email \_\_\_\_\_

Me gustaría recibir mas información del proyecto por email.  Sí  No

SANDAG revisará y compartir los comentarios del público con la Administración Federal de Ferrocarriles, el líder del proyecto. También, puede enviar sus comentarios por correo electrónico a: Tim DeWitt, Gerente del Proyecto, al Tim.DeWitt @ sandag.org.

#### Comentarios del Proyecto:

---

---

---

---

---

---

---

---

---

---

---

---

---

---

---

---

---

---

---

---

---

---