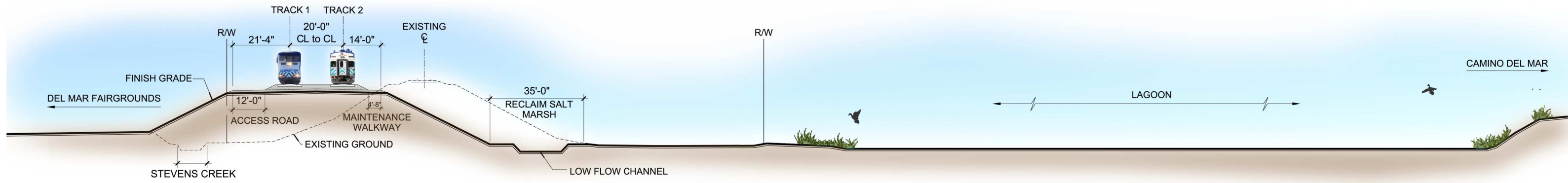
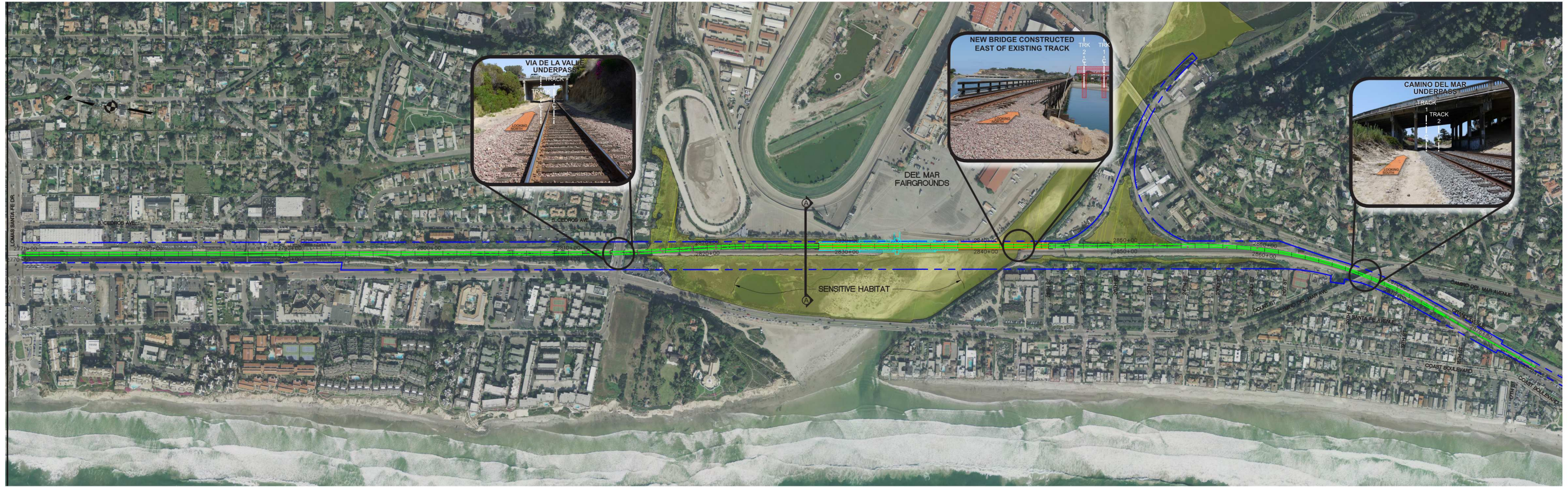


San Dieguito Double Track and Special Events Platform Project

Double Track Overview

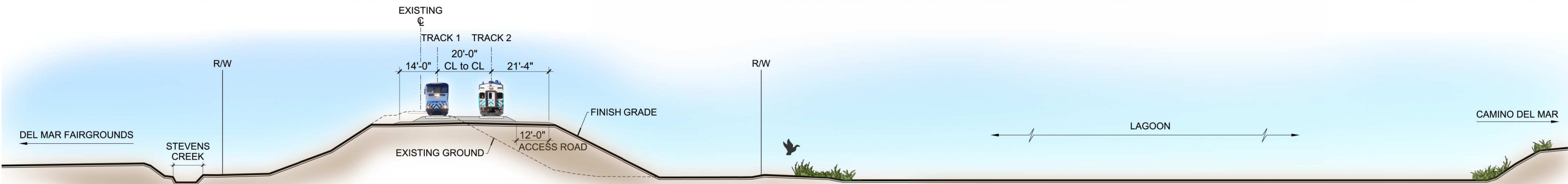
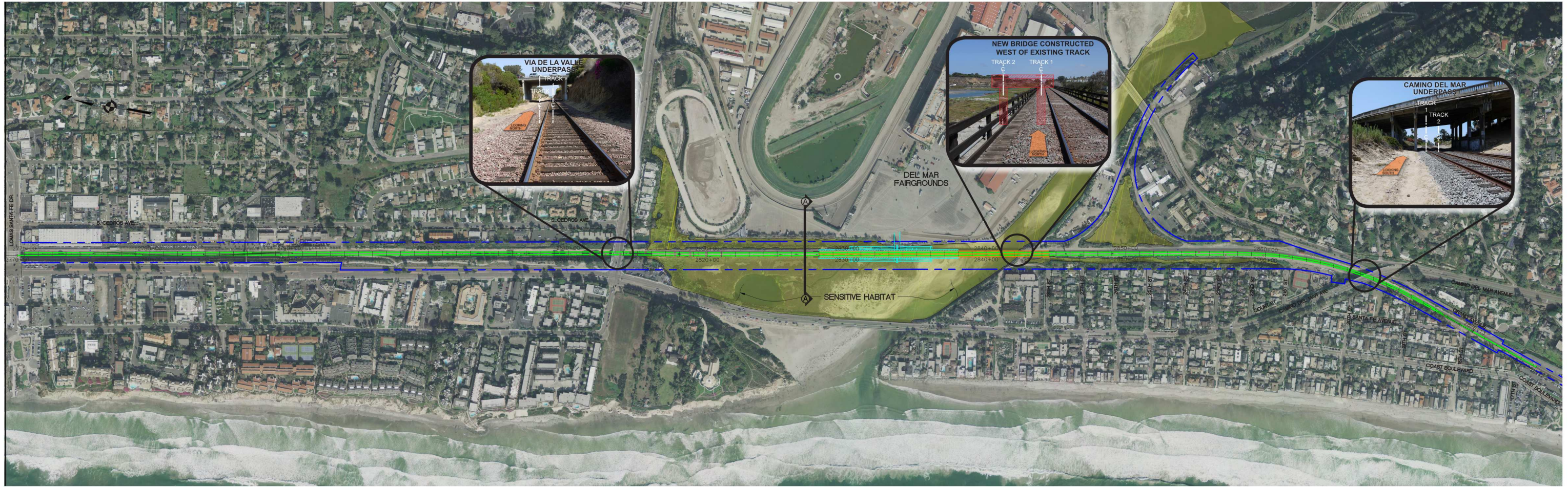
- Adds 1.1 miles of double track within existing railroad right of way
- Results in 2.8 mile segment of double track
- Maintain Via De La Valle and Camino Del Mar Overpass
- Raises track to meet federal standards for flooding
- Includes track alternatives east and west of current alignment





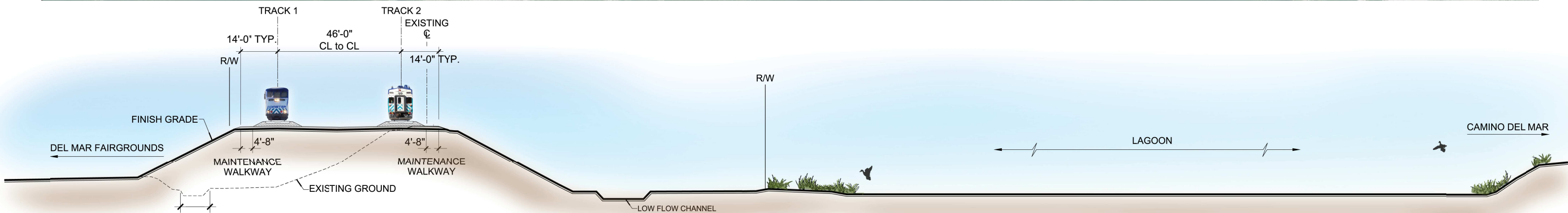
EAST SIDE LOADING - BERM SECTION

SCALE 1:10



WEST SIDE LOADING - BERM SECTION

SCALE 1:10



EAST CENTER LOADING - BERM SECTION

SCALE 1:10