

San Dieguito Double Track and Special Events Platform Project

WELCOME

PLEASE SIGN IN

Tonight's meeting is an open house format. Please visit each station for detailed project information.

Please fill out a comment form or visit the court reporter to provide comments on the project.

Public comments on the Environmental Assessment must be received by SANDAG by December 1, 2014.

Thanks for attending!

San Dieguito Double Track and Special Events Platform Project

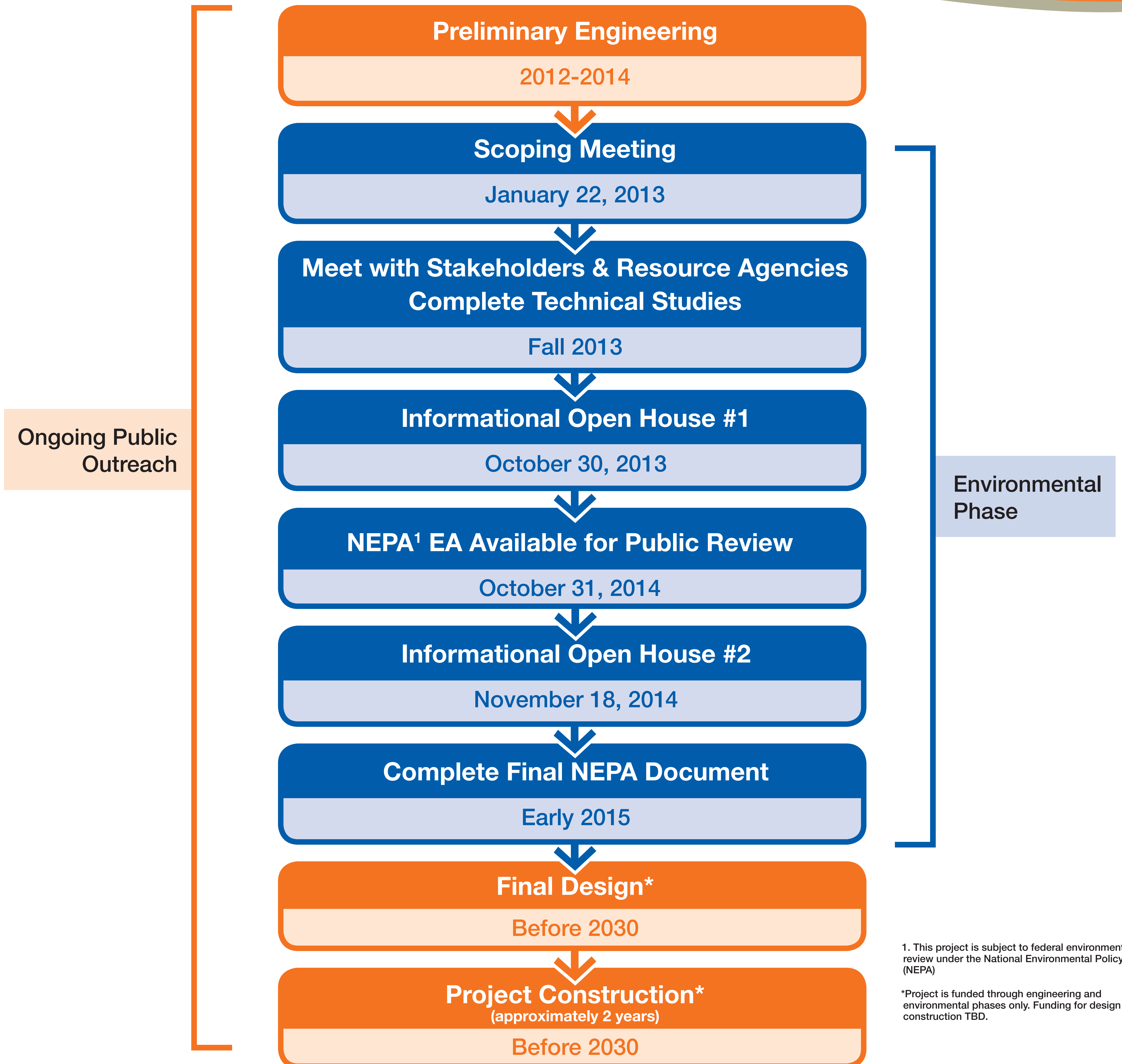
Project Benefits

- More reliable train operations
- Improved coastal access
- Relief of nearby traffic congestion
- Removal of diesel buses from Solana Beach Station
- Improved lagoon health
- More open views
- Protection from flood events
- Transit option to Fairground's special events



San Dieguito Double Track and Special Events Platform Project

Project Timeline



1. This project is subject to federal environmental review under the National Environmental Policy Act (NEPA)

*Project is funded through engineering and environmental phases only. Funding for design and construction TBD.

San Dieguito Double Track and Special Events Platform Project

Project Evolution

During the last 20 months, SANDAG has:

- Formed a Technical Working Group, which provided stakeholders many opportunities to review and comment on the project

- Held a project scoping meeting (Jan. 2013) and open houses (Oct. 2013 and Nov. 2014) to solicit public input



- Briefed the cities of Solana Beach and Del Mar
- Conducted field visits and/or briefings with:
 - » Del Mar Ad Hoc Committee
 - » Del Mar Lagoon Committee
 - » Resource agencies
 - » San Dieguito River Park JPA
 - » 22nd District Agricultural Association
 - » Del Mar Thoroughbred Club
 - » Local HOAs
 - » Small businesses

San Dieguito Double Track and Special Events Platform Project

Project Evolution

Based on community feedback received thus far, SANDAG has:

- Selected eastern-most track alignment
- Reduced the height of the proposed bridge to the greatest extent possible
- Moved the platform as far north as feasible
- Worked with NCTD so that COASTER trains will stop at the northern end of the platform
- Incorporated a public undercrossing for improved coastal access
- Developed preliminary architectural concepts for community input

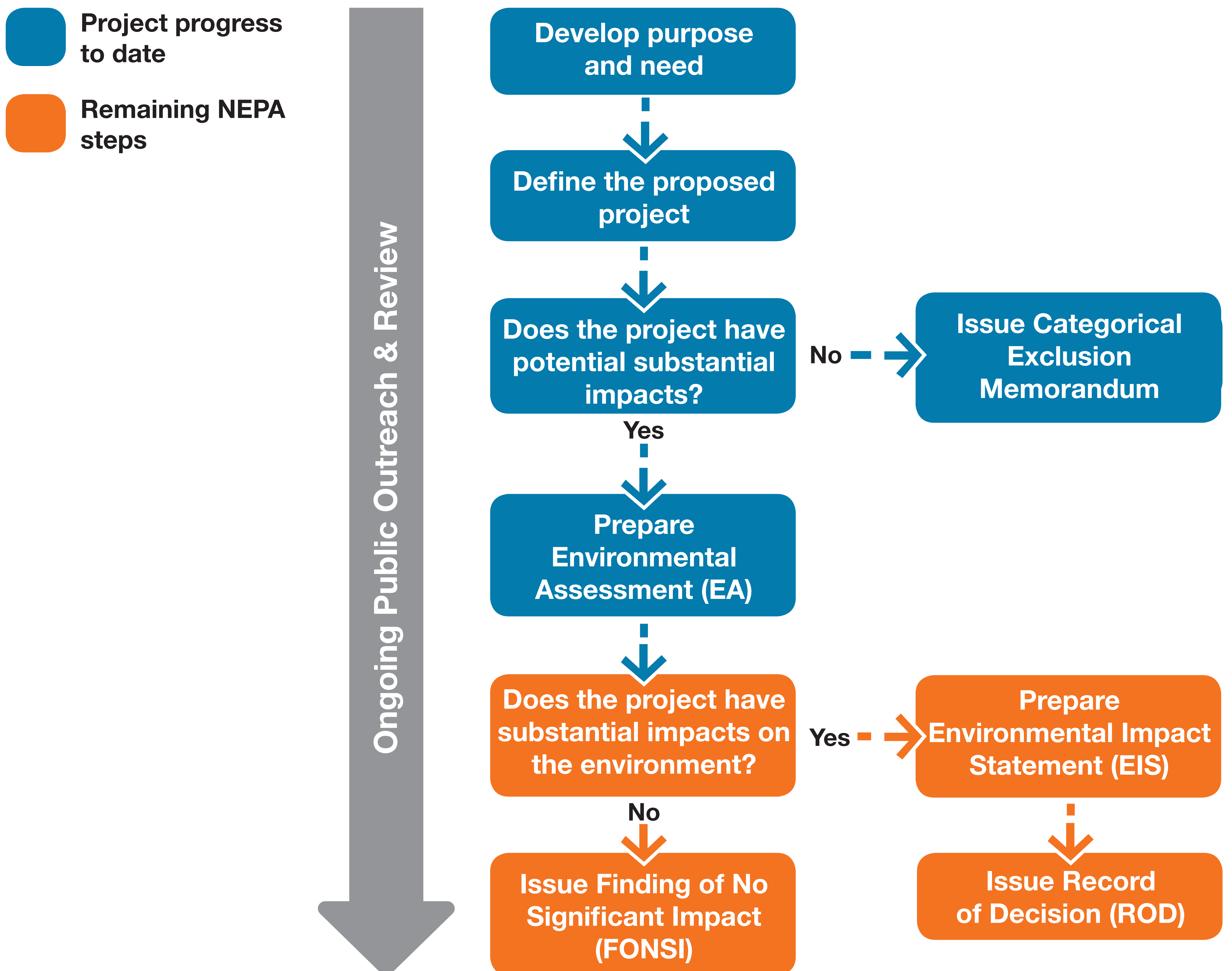
San Dieguito Double Track and Special Events Platform Project

Environmental Assessment Technical Reports

- Air Quality Technical Report
- Drainage Study and Storm Water Management Plan
- Noise and Vibration Report
- Biological Technical Report
- Jurisdictional Delineation Report
- Hydrology and Hydraulic Technical Studies
- Visual Impact Assessment Technical Memorandum
- Initial Site Assessment
- Cultural and Historical Resources Technical Report
- Preliminary Geotechnical Evaluation

San Dieguito Double Track and Special Events Platform Project

Environmental Process



San Dieguito Double Track and Special Events Platform Project

Environmental Assessment Findings

Noise and Vibration

Noise impacts from operations and platform would range from no impact to moderate impacts. Temporary impacts related to construction

Vegetation

Impacts to vegetation and water/wetlands will be mitigated by a longer bridge (berm removal) and the SANDAG Environmental Mitigation Program

Visual

Impacts expected during construction. Design features will be addressed in later design phases

Air Quality

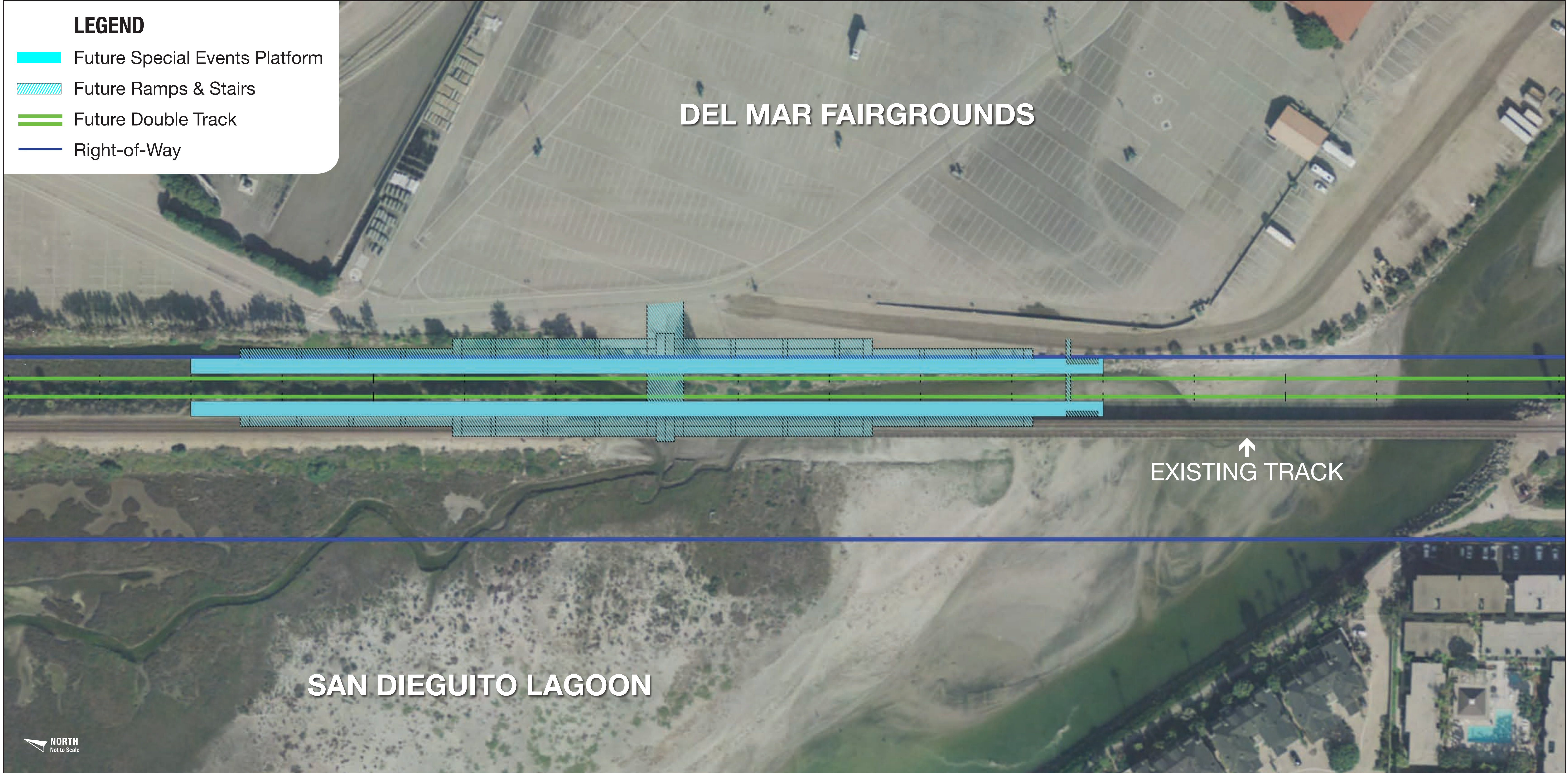
Long-term benefits associated with reduction of vehicle trips. Construction emissions are at less than substantial levels

Water Quality

Construction crews will implement “best management practices” to limit impacts to water

San Dieguito Double Track and Special Events Platform Project

Preferred Special Events Platform Location



San Dieguito Double Track and Special Events Platform Project

Public Input: Lighting Style Options

Del Mar City



Solana Beach Station



Carlsbad Village Station



Sorrento Valley Station



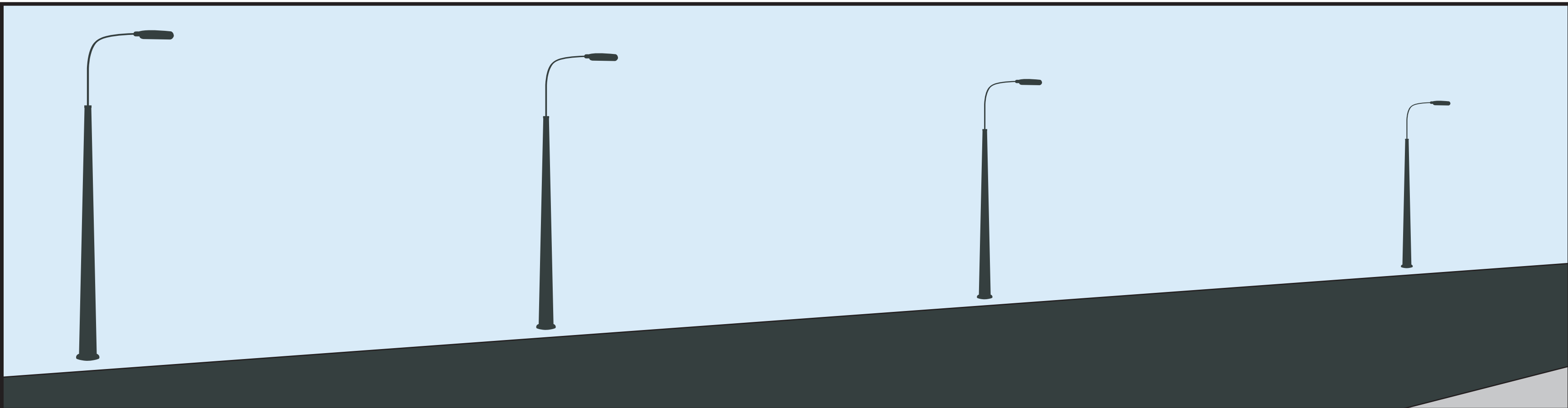
Note: Current standards require NCTD to use LED bulbs in their station lighting. As LED technology advances, standards are subject to change.

Select which conceptual options you like by placing a sticker under your preference.

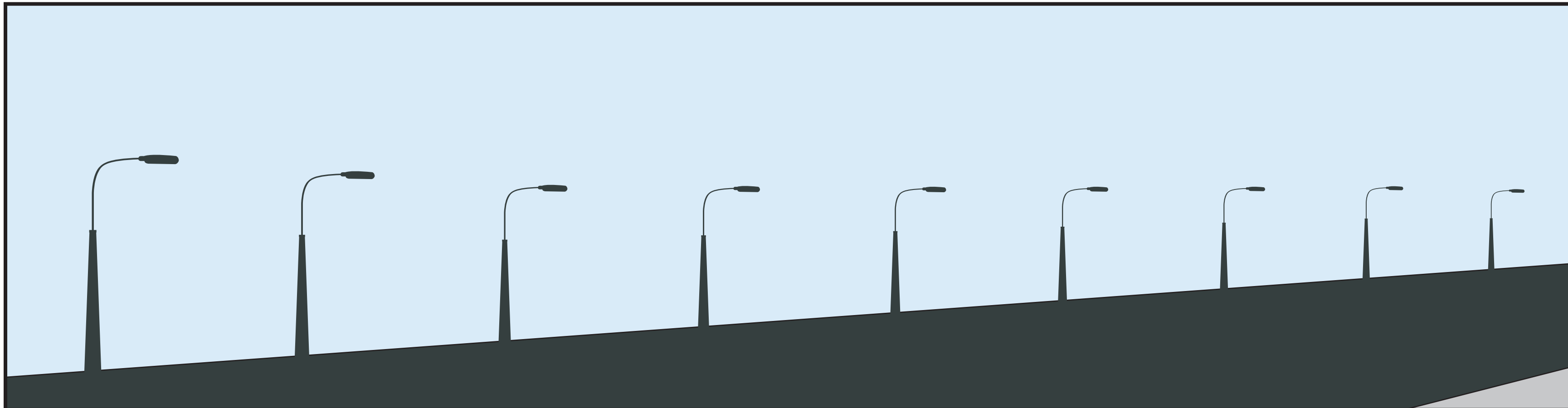
San Dieguito Double Track and Special Events Platform Project

Public Input: Lighting Pole Height Options

Higher light poles, but fewer.



Shorter light poles, but more.



Empty rectangular box for public input on the higher pole option.

Empty rectangular box for public input on the shorter pole option.

Note: In addition to light poles, SANDAG and NCTD will consider bollards and rail lighting options. However, having only bollards is not an option due to safety concerns.

Select which conceptual option you like by placing a sticker under your preference.

San Dieguito Double Track and Special Events Platform Project

Public Input: Railing Style Options

Stainless Steel Post and Cable Railing



MTS Station



Carlsbad Village Station



Sorrento Valley Station



Blank white box for public input/sticker placement.

Blank white box for public input/sticker placement.

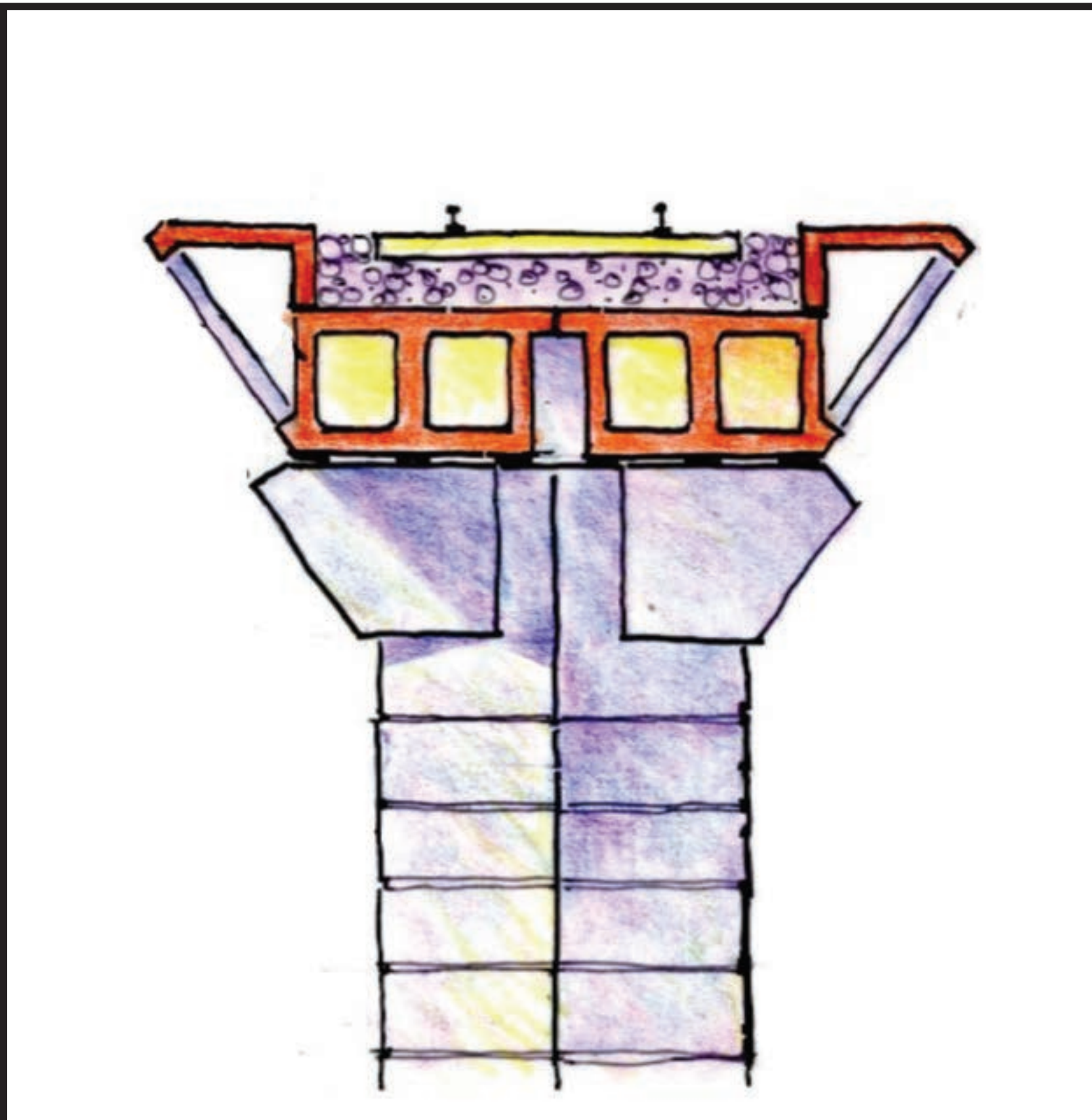
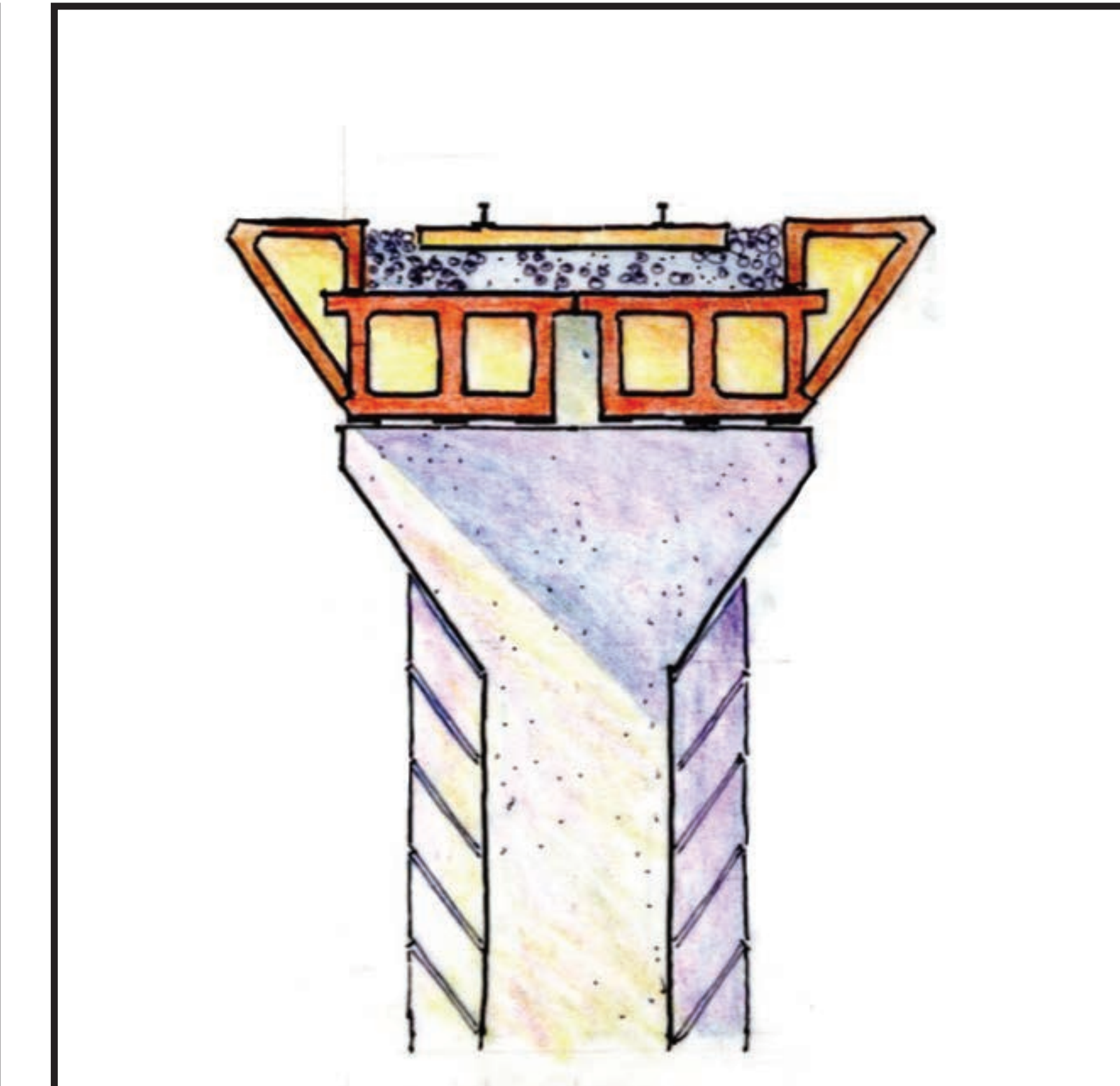
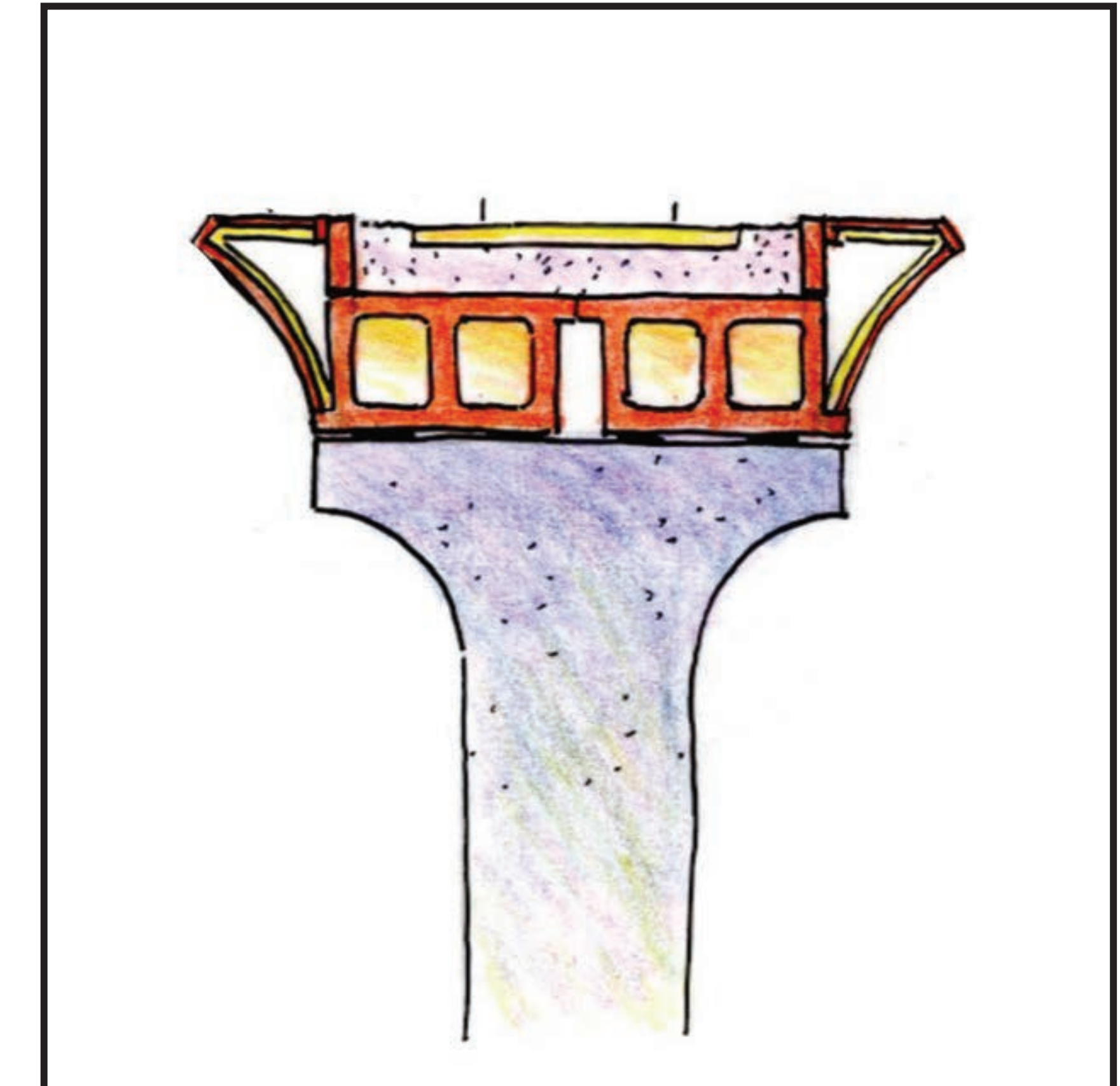
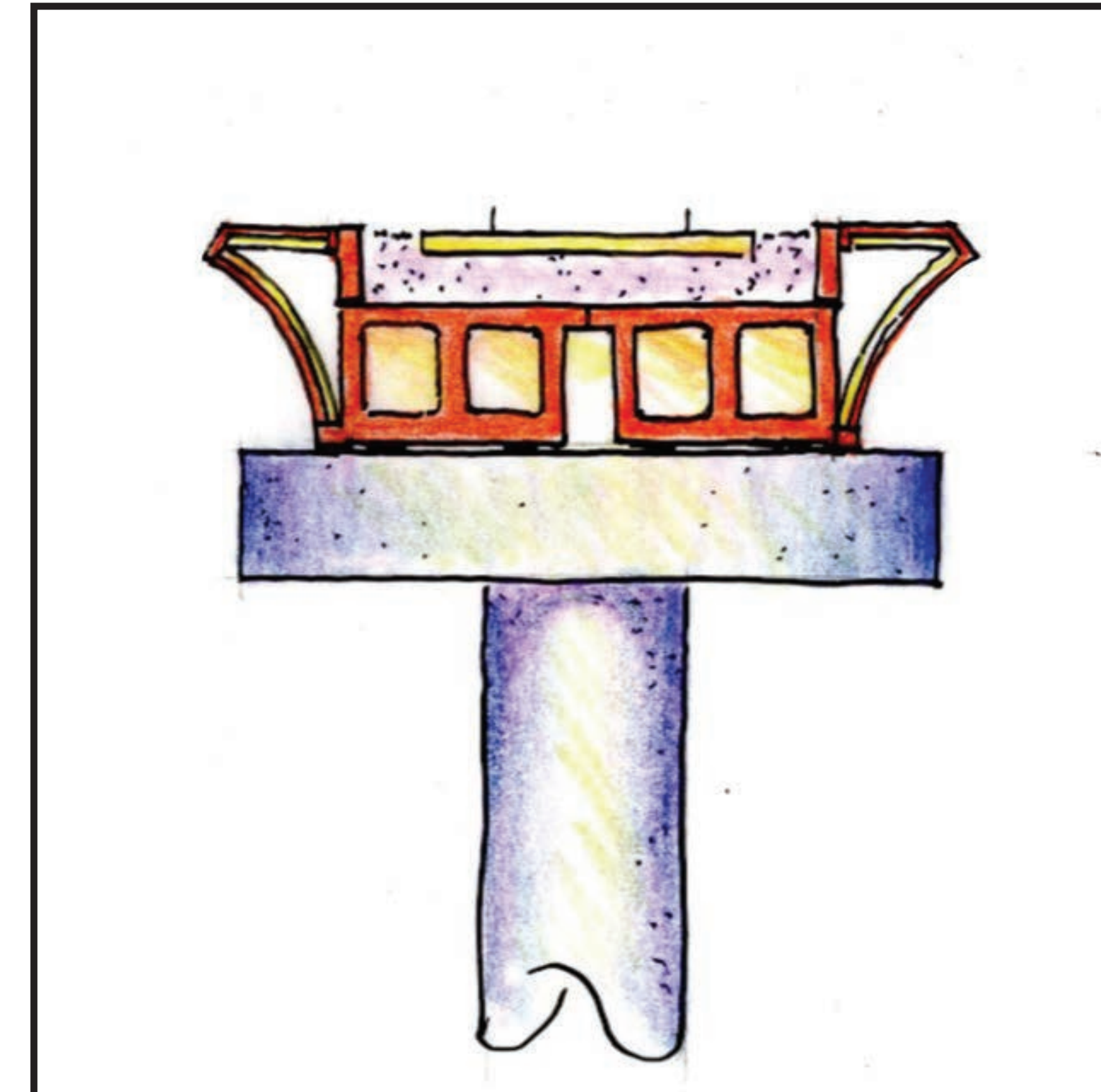
Blank white box for public input/sticker placement.

Blank white box for public input/sticker placement.

Select which conceptual options you like by placing a sticker under your preference.

San Dieguito Double Track and Special Events Platform Project

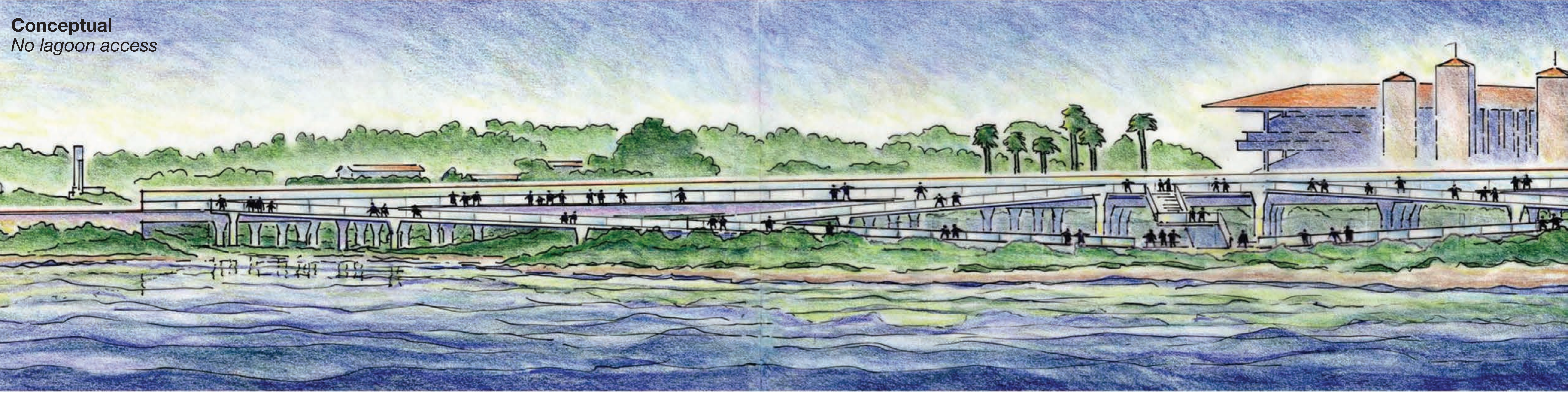
Public Input: Pier Options

A	B	C	D
			

Select which conceptual options you like by placing a sticker under your preference.

San Dieguito Double Track and Special Events Platform Project

Conceptual Rendering: North End of Platform



San Dieguito Double Track and Special Events Platform Project

Conceptual Rendering: South End of Bridge



San Dieguito Double Track and Special Events Platform Project

Comment Options

1. Fill out a comment form
2. Speak directly to the court reporter

**If you would rather mail or email your comment,
they can be sent to:**

Linda Culp, Principal Planner

SANDAG

401 B Street, Suite 800

San Diego, CA 92101

Linda.Culp@sandag.org

Public comments on the Environmental Assessment must be received by SANDAG by December 1, 2014.