



Building Today. Boarding Tomorrow.

E-News Update | November 2015

Los Peñasquitos Lagoon Bridges Replacement Project

Crews Work with State-of-the-Art Technology

Construction crews have made significant progress to replace the rail bridges over the Los Peñasquitos Lagoon. During three recent weekends, when rail service was shut down for construction, crews met their scheduled goal of nearly completing the temporary support structure along both sides of the northernmost bridge, which provides a platform to stage/move equipment and materials for bridge construction.



Installation has begun of pre-drilled Cast-in-Steel-Shell piles on the northernmost bridge.

The northernmost bridge is the longest of the four rail bridges and will require 33 piles, or columns, to support it. In order to avoid the loud pile driving normally used in bridge construction, pre-drilled Cast-in-Steel-Shell (CISS) piles are being installed. The steel shells are welded off-site. At the construction site a hole is drilled, the welded CISS pile is dropped in, and then it is filled with concrete. Five of the 11 center piles were installed in October. The 22 outside CISS piles will be installed during scheduled daytime work over the next several weeks, with the remaining interior piles installed during weekend rail closures in January 2016.

New Southern Rail Bridges Begin to Take Shape

Work also is progressing on the other three bridges over the lagoon. The two center bridges are only accessible by foot or rail. The weekend rail closures allowed crews to expedite moving equipment and materials to these areas.

During construction, residents can expect daytime noise and intermittent overnight work and lights.

Current construction hours are **Monday - Friday, 6 a.m. to 6 p.m.** Intermittent nighttime work will occur during scheduled freight windows, at which time there will be no freight train service or BNSF train horns. Work schedules are subject to change. We will take all reasonable steps to minimize noise and other impacts to nearby residents and businesses.

We appreciate your patience during construction.

TRAIN HORN RULES

Federal regulations require train conductors to sound the horn when approaching an active construction site, even in a quiet zone. Train horns serve as a warning system to ensure the safety of railroad workers. More information and rules governing the use of train horns can be found on the Federal Railroad Administration's website at www.fra.dot.gov.

About the Project

SANDAG is working in collaboration with the North County Transit District (NCTD) to replace the four aging, wooden trestle railway bridges in the Los Peñasquitos Lagoon with modern concrete bridges. The lagoon bridges were built between the 1910s and 1930s and have aged beyond the average operating life of 75 years. The new single-track bridges will help meet current and future demand for intercity, commuter, and freight rail services. Construction began in August 2015 and is expected to last approximately two years.

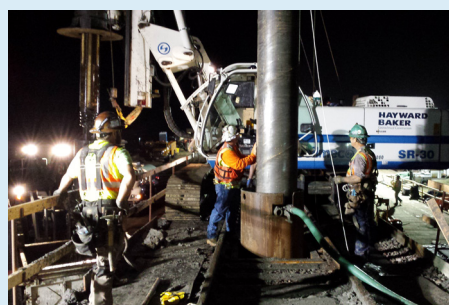
Si desea obtener información en español por favor comuníquese al (619) 699-1950 o pio@sandag.org.

Project Map



Did You Know?

The Los Peñasquitos Lagoon Bridges Replacement Project is one of the few rail bridge projects in the North Coast Corridor to use in-line replacement.



In-line replacement means that a portion of the wooden bridge is removed and then replaced by a combination of pre-cast and cast-in-place structures. Most other rail bridges are built alongside the existing bridge. In-line replacement is an environmentally sensitive alternative that will maintain the current footprint in the lagoon.

Project Photo Album

Check out more photos of the lagoon bridges and construction



For More Information

Visit: KeepSanDiegoMoving.com/LPLB

Call: (858) 549-RAIL

TTY: (619) 699-1904

Follow Us

[Sign up for project updates](#)

[SANDAG | GoNCTD](#)

[SANDAGregion | GoNCTD](#)

[SANDAGregion | GoNCTD](#)