

# Sorrento Valley Double Track

## Additional Parking Spaces Being Constructed at the Sorrento Valley COASTER Station

As part of the improvements to the San Diego-Los Angeles-San Luis Obispo (LOSSAN) rail corridor, SANDAG will continue night construction work as crews build a retaining wall adjacent to the Sorrento Valley COASTER Station parking lot. Work will take place Sunday, September 21 through Sunday, October 5, from 9 p.m. to 5 a.m.

If you plan to park at the station during this time, please be aware that approximately 25 parking spaces will not be available overnight during construction hours. Signage will be posted in advance and vehicles left in these spaces overnight will be subject to towing. We appreciate your patience during construction.



Crews work to pour piles for a new concrete bridge.

### Eighty-one New Parking Spaces Scheduled to Open in October

A new 81-space parking lot, south of Sorrento Valley Boulevard, is now under construction. Crews are working on installing a drainage system and curbs and will soon be laying the parking lot pavers. The South Lot is scheduled to be open for parking on October 22. At the end of construction when both lots are open, there will be a total of 189 parking spaces to serve transit riders. The addition of the southern lot aligns with the overall goal of increasing capacity in the San Diego coastal segment of the LOSSAN rail corridor.

### North Lot Parking Impacts

Upcoming construction activities will require partial closure of the North Lot from October 6 through June 2015. ADA parking will be maintained throughout construction.

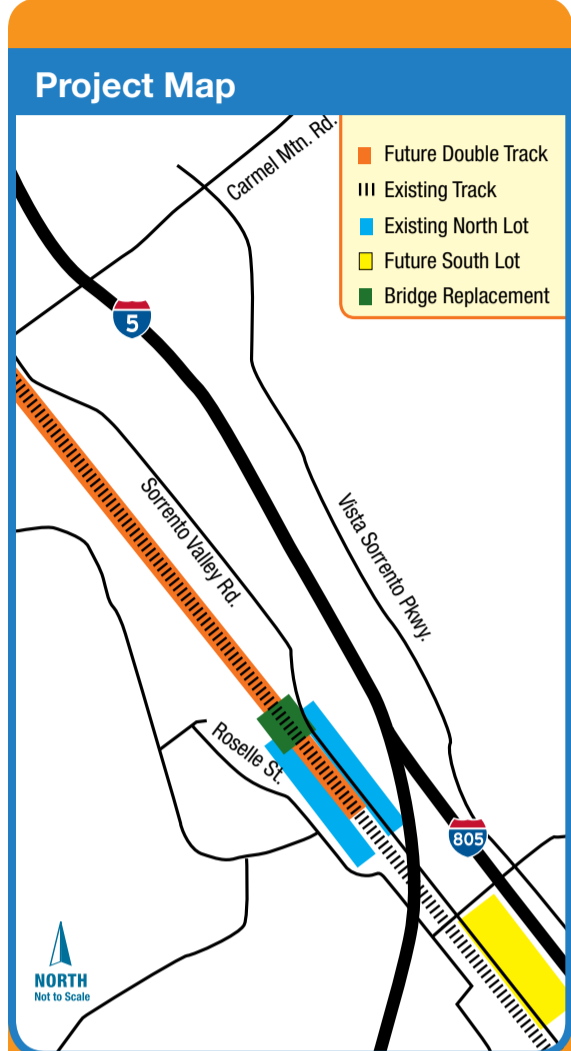
- October 6 – 22: Twenty-five (25) parking spaces will be closed in the North Lot.
- October 22 – 25: The entire North Lot will be closed except for ADA parking. Riders will be directed to park in the new 81-space South Lot during this time.
- October 26 – June 2015: There will be approximately 45 spots available in the North Lot, including ADA parking, and 81 spots available in the South Lot.



The construction team makes progress on installing new drainage systems.

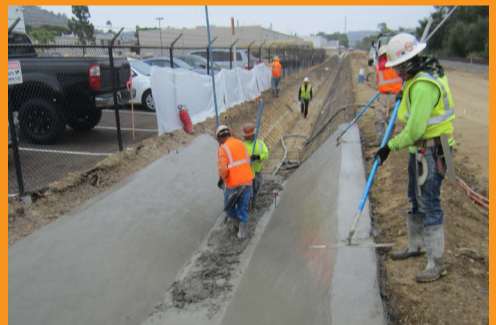
### About the Project

In addition to the parking lot improvements, SANDAG is working in collaboration with North County Transit District (NCTD) to add a second mainline rail track for approximately 1.1 miles to the north from the Sorrento Valley Station. As part of this effort, portions of the existing track bed are being raised as much as five feet, placing it above the 50-year flood level. In addition, two wooden trestle bridges, originally built in the 1940s, are undergoing replacement with new concrete structures. Necessary retaining walls are being built adjacent to the tracks near the parking lots. Additionally, an embankment protection system is being installed on the western side of the track, adjacent to Los Peñasquitos Creek. The entire project is estimated to be completed in late 2015.



### Photo Album of Construction

Check out some of the action shots taken recently at the site.



### For More Information

Visit: [KeepSanDiegoMoving.com/SVDT](http://KeepSanDiegoMoving.com/SVDT)

Call: (858) 549-RAIL

TTY: (619) 699-1904

### Follow Us

Sign up for more information

SANDAG | GoNCTD

SANDAGregion | GoNCTD

Traducción al español disponible a solicitud.