

## SORRENTO VALLEY DOUBLE TRACK Rail Improvement Project

### GOING THE EXTRA MILE TO IMPROVE RAIL TRANSIT

The San Diego Association of Governments (SANDAG) is working with the North County Transit District (NCTD) and the Metropolitan Transit System (MTS) to add 1.1 miles of second mainline rail track from the Sorrento Valley transit station heading north.

The project will help to improve the reliability and on-time performance of COASTER, Amtrak, and BNSF Railway services by removing a bottleneck in San Diego's coastal rail line and allowing passenger and freight trains to pass each other as they enter and leave the Sorrento Valley transit station.



An NCTD COASTER train passes over an aging wooden trestle bridge in the Sorrento Valley area.

This project is part of the San Diego segment of the coastal rail corridor and serves as a vital link for passenger and freight movements in San Diego County. The coastal rail corridor is the second-busiest intercity passenger rail line in the United States and the only viable freight rail link between San Diego and the rest of the nation.

SANDAG is planning, designing, and constructing more than \$900 million in improvements for the 60-mile San Diego segment of the coastal rail corridor, including a large-scale effort to double-track 97 percent of the corridor from Orange County to Downtown San Diego by 2050. More than half of the San Diego segment is currently double-tracked.

This project, combined with others in the corridor, will:

- Reduce passenger train travel times;
- Improve system reliability;
- Support increased goods movement, which benefits the regional economy;
- Reduce passenger and truck volumes on Interstate 5 (I-5); and
- Support increased passenger and freight rail services in the future.

Construction is expected to begin this winter and is anticipated to last 18 to 24 months. The project budget is currently \$33.7 million, with funding from federal and state sources and the local *TransNet* half-cent sales tax for transportation approved by San Diego voters.



Improvements along the coastal rail corridor will increase the reliability and on-time performance of rail services.

# SORRENTO VALLEY DOUBLE TRACK

## Rail Improvement Project

### More Rail Improvements Planned

The Sorrento Valley Double Track project will add a second mainline track, as well as several other important improvements, including:

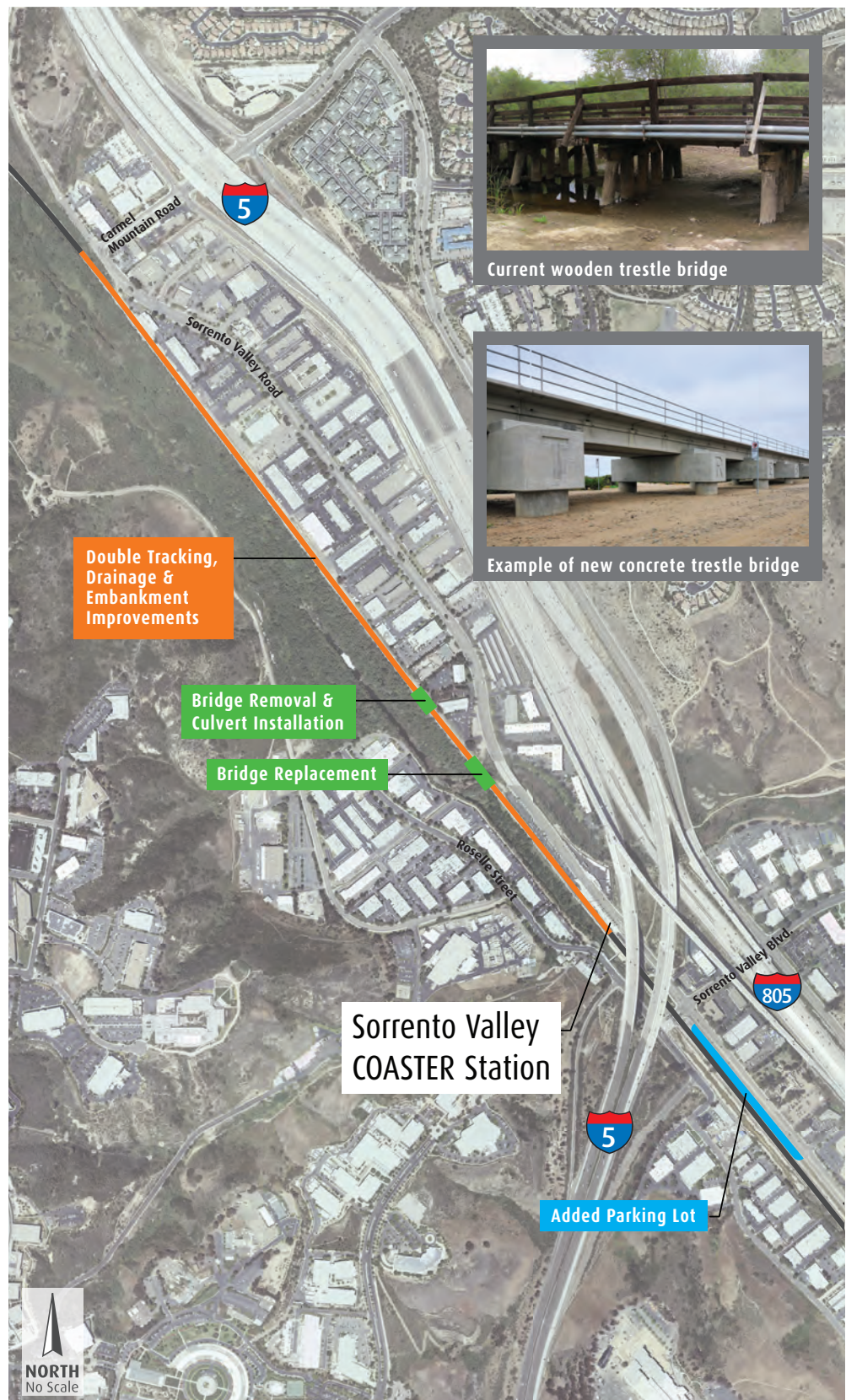
- Adding a new 81-space surface parking lot south of the station, across Sorrento Valley Boulevard, to provide a total of 189 parking spots at the station when construction is complete;
- Raising the railroad tracks above the flooding level of 50-year storm events;
- Replacing two aging wooden trestle bridges with new concrete structures;
- Installing a new drainage channel along the east side of the track to improve drainage from urban runoff and storm events; and
- Installing an embankment protection system along the west side of the track adjacent to Los Peñasquitos Creek to protect the track bed from erosion.

These improvements will strengthen and protect this vital regional transportation corridor for the future.

### Safeguarding Rail Service During Major Storms

The Sorrento Valley Double Track project will raise parts of the existing track bed, placing it above the 50-year flood level. Flooding from storms can disrupt and halt rail service in this corridor, as it did for one week in the winter of 2010.

The City of San Diego updated the Federal Emergency Management Agency (FEMA) flood plain maps in 2012 to reflect current flood conditions under 100-year storm events. These maps are available at [www.msc.fema.gov](http://www.msc.fema.gov). This rail project will not increase water surface elevations above FEMA's allowable regulatory limits of one foot during 100-year storm events.



## SORRENTO VALLEY DOUBLE TRACK IMPROVEMENTS

## Transportation Solutions Planned for the Greater Golden Triangle

SANDAG, Caltrans, NCTD and MTS are working together to increase and enhance travel choices in and around the Golden Triangle area defined by the I-5 and I-805 merge and State Route 52. A range of transportation projects will be in design or construction in the coming years to relieve highway congestion and provide residents, employees, students, and visitors with reliable and improved travel choices including:

- Ridesharing and employer transportation programs
- New bike and pedestrian paths
- I-5/Genesee Avenue Interchange Improvements
- I-805 HOV/Carroll Canyon Road Express Lanes and Direct Access Ramps
- Sorrento Valley Double Track Rail Improvements
- Sorrento to Miramar Double Track Rail Improvements
- Mid-Coast Corridor Trolley Extension
- SuperLoop Bus Stations and Expansion

Many of these improvements are part of the North Coast Corridor Program, a coordinated \$6.5 billion dollar package of rail, highway, bike/pedestrian, and environmental improvements that will extend from the Golden Triangle to Oceanside.

These partner agencies also are coordinating their public information efforts. A centralized website for project information will be created and a comprehensive employer outreach effort to promote ridesharing and transit use will be conducted. Visit [KeepSanDiegoMoving.com](http://KeepSanDiegoMoving.com) for project information and check out [iCommuteSD.com](http://iCommuteSD.com) for information about ridesharing, teleworking, and employer transportation programs.

### Rail Construction South of the Sorrento Valley Transit Station Nears Completion

Three miles of second mainline track will be added between the Sorrento Valley transit station and Miramar Road as part of the Sorrento to Miramar Double Track project. Phase One is anticipated to be complete in the spring of next year and includes:

- 1.1 miles of new second track, south of Sorrento Valley Boulevard to just east of I-805 and a new track crossover to allow trains to cross from one track to another;
- Replacement of an aging wooden trestle bridge with a modern steel structure; and
- New retaining walls and drainage improvements.

Phase Two will add two more miles of second track and straighten sharp curves that currently cause passenger and freight trains to slow as they climb Miramar Hill. The second phase is in environmental review and is not yet funded for construction.



*Looking south towards Sorrento Valley, the I-5/I-805 interchange lies at the top of the Golden Triangle area.*

### Construction to Start Next Year on Rail Bridge Replacement Project in Los Peñasquitos Lagoon

The Los Peñasquitos Lagoon Bridges Replacement Project will replace four aging single-track timber trestle railway bridges that span the Los Peñasquitos Lagoon with modern concrete structures. This will help maintain compliance with Federal Railroad Administration standards.

The existing timber bridges were built between 1911 and 1940 and have aged beyond their useful service life. They currently require frequent maintenance by NCTD, making replacement the most cost-effective solution.

Construction is planned to start in 2014 and will take approximately 18 months to complete.

### Thanks for Your Input!

Many businesses in the Sorrento Valley Double Track project area participated in a survey last year to identify areas of concern in advance of construction. This input will help us to be better neighbors as we work to improve the coastal rail corridor. To limit noise and vibration during construction, SANDAG will:


- Use smaller equipment that creates less vibration when compacting the soil and rocks that support the railroad tracks;
- Restrict larger compaction equipment to paved areas, such as the new parking lot, where asphalt requires heavier compaction;
- Maintain public access to businesses at all times;
- Distribute print and online notices of planned construction activities; and
- Provide a construction hotline for local businesses and property owners.



401 B Street, Suite 800 • San Diego, CA 92101



## FOR MORE INFORMATION

Call: (858) 549-RAIL (7245),  TTY: (619) 699-1904

Email: [LOSSANRail@keepsandiegomoving.com](mailto:LOSSANRail@keepsandiegomoving.com)

Visit: [KeepSanDiegoMoving.com/SVDT](http://KeepSanDiegoMoving.com/SVDT)



@SANDAG  
@goNCTD



SANDAGregion  
GoNCTD



SANDAGregion

# Join Us To Learn More

## SORRENTO VALLEY DOUBLE TRACK PROJECT INFORMATIONAL OPEN HOUSE

Please join us at an informational open house to learn more about the upcoming Sorrento Valley Double Track project. SANDAG and NCTD team members will provide information and answer your questions about the planned rail improvements.

### WHEN:

Tuesday, November 19  
4:00 – 6:00 p.m.

### WHERE:

Torrey Hills Elementary School  
Multi-Purpose Room  
10830 Calle Mar De Mariposa  
San Diego, CA 92130

*Traducción al español disponible a solicitud.*

**Keep San Diego Moving**  