



Construction Access

Double Track, Drainage and Embankment Improvements
Estimated Completion: Summer 2015

Park Access Road Relocation

On-Site Wetlands Mitigation
Estimated Completion: Winter 2014

Habitat Restoration Planting Improvements
Estimated Completion: Winter 2014

Bridge Removal and Culvert Installation
Estimated Completion: Fall 2014

Bridge Replacement
Estimated Completion: Spring 2015

Construction Staging Areas

Existing Sorrento Valley COASTER Station

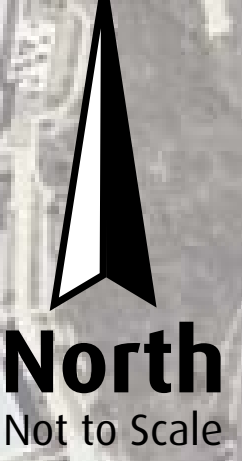
Addition of New 81-space Parking Lot
Estimated Completion: Summer 2014

Construction Staging Area

Rail Spur (Not Main Track)
Estimated Completion: Fall 2014

PROJECT DESCRIPTION

- Adds 1.1 miles of second mainline rail track from the Sorrento Valley transit station heading north
- Allows passenger and freight trains to pass each other as they enter and leave the Sorrento Valley transit station
- Improves reliability and on-time performance of COASTER, Amtrak, and BNSF Railway services by removing a bottleneck in San Diego's coastal rail line
- Constructs the majority of the improvements during the day



- Improves the reliability and on-time performance of passenger and freight trains on San Diego's coastal rail line in conjunction with other double-tracking projects
- Allows trains to pass each other as they enter and leave the Sorrento Valley transit station
- Raises portions of the railroad track above the flood level of 50-year storm events to prevent disruption to rail service
- Meets increased passenger and freight rail service demands projected for the future
- Supports the region's economy by ensuring the uninterrupted movement of goods through the region
- Reduces greenhouse gas emissions and traffic congestion by decreasing passenger and truck volumes on Interstate 5





New Parking Lot

Estimated Completion: Summer 2014

- Adds 4 ADA-accessible parking spaces
- Adds 77 standard parking spaces
- Total station parking after project completion: 189 spaces



81 New Parking Spaces
Including 4 Additional
ADA-accessible Spaces

New Retaining Wall
To Be Added

Double Track, Drainage and Embankment Improvements

Estimated Completion: Summer 2015

Adds 1.1 miles of second mainline rail track from the Sorrento Valley transit station heading north

Bridge Removal and Culvert Installation

Estimated Completion: Fall 2014

Bridge Replacement

Estimated Completion: Spring 2015

Replaces an aging timber trestle bridge with a modern structure



Current trestle bridge

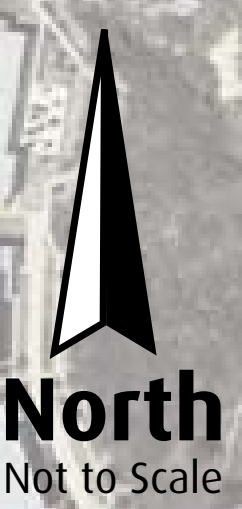


Example of a new concrete trestle bridge

Existing
Sorrento Valley
COASTER Station

Rail Spur (Not Main Track)

Estimated Completion: Fall 2014

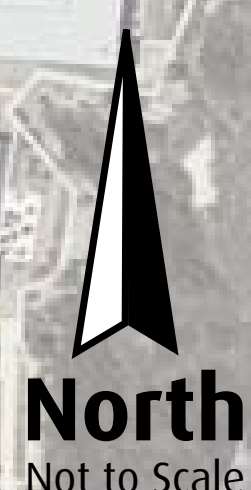


North
Not to Scale



MINIMIZING DISRUPTIONS

- The majority of construction work will occur during the day and within the railroad right-of-way
- Construction vehicles used for earthwork activities will use approved routes to deliver materials to and from the site
- Construction equipment and materials will be staged in designated areas
- Smaller equipment that creates less vibration will be used when compacting soil
- Construction crews will work to minimize impacts from noise and lights to the greatest extent possible



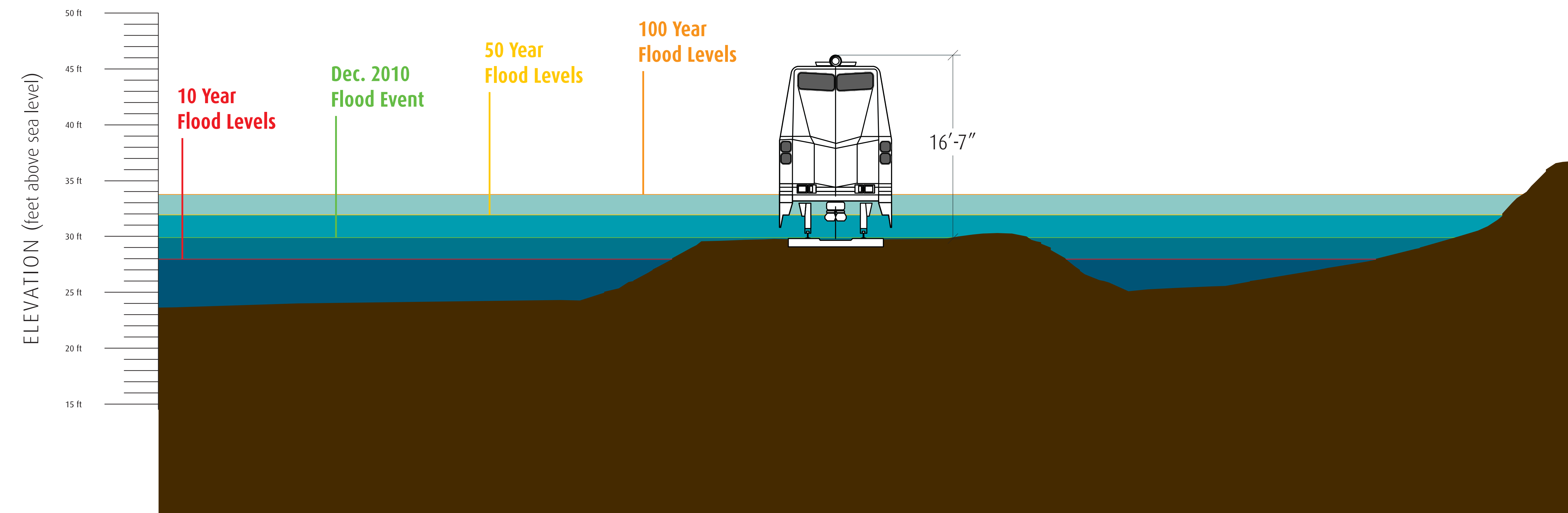
The project:

- Improves the safety and reliability of passenger and freight trains and protects the movement of interstate commerce through the region
- Reduces potential flood levels for many properties during major storm events
- Complies with FEMA and City of San Diego flood plain regulations

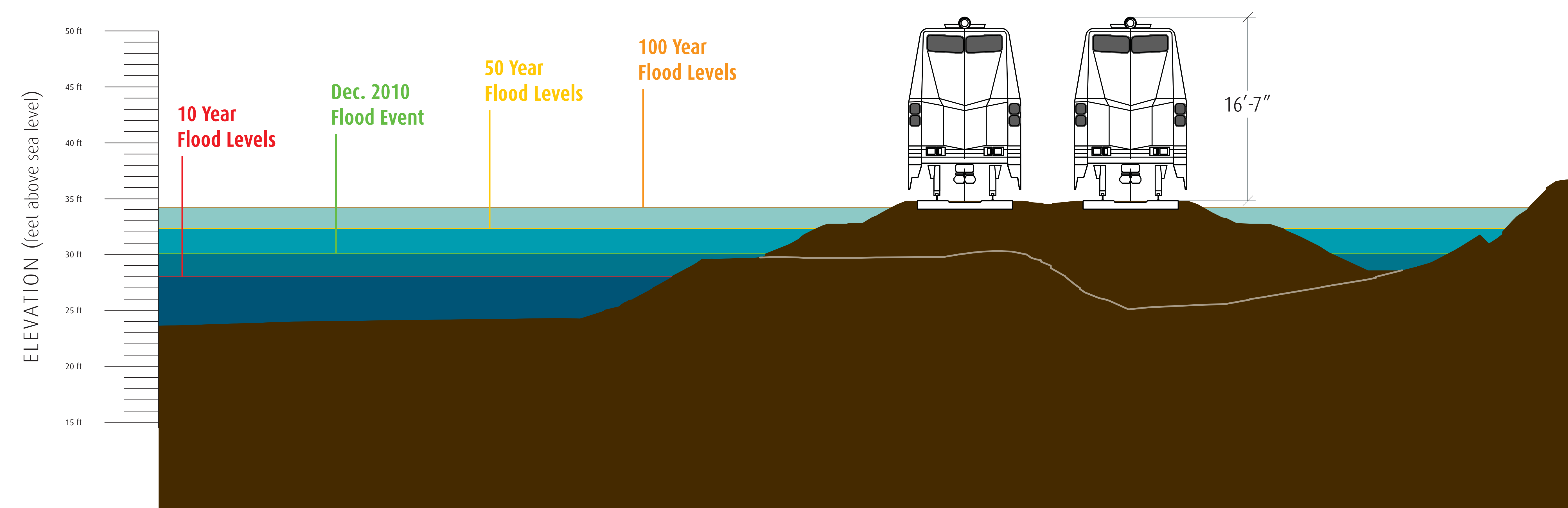


Rail tracks submerged in December 2010 flood

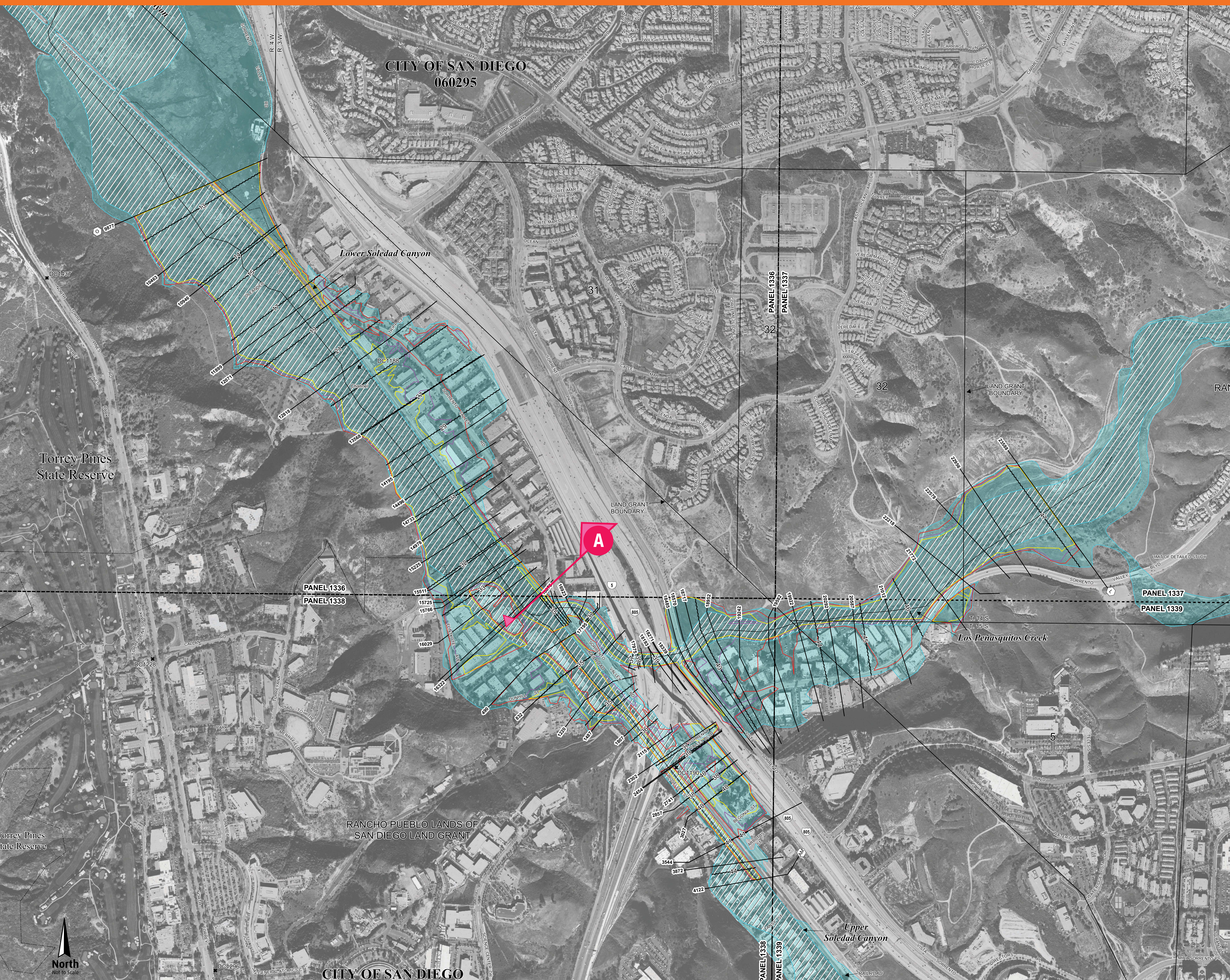
EXISTING FLOOD PLAIN ELEVATIONS - SECTION A (LOOKING NORTH)








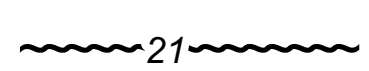


POST PROJECT FLOOD PLAIN - SECTION B (LOOKING NORTH)

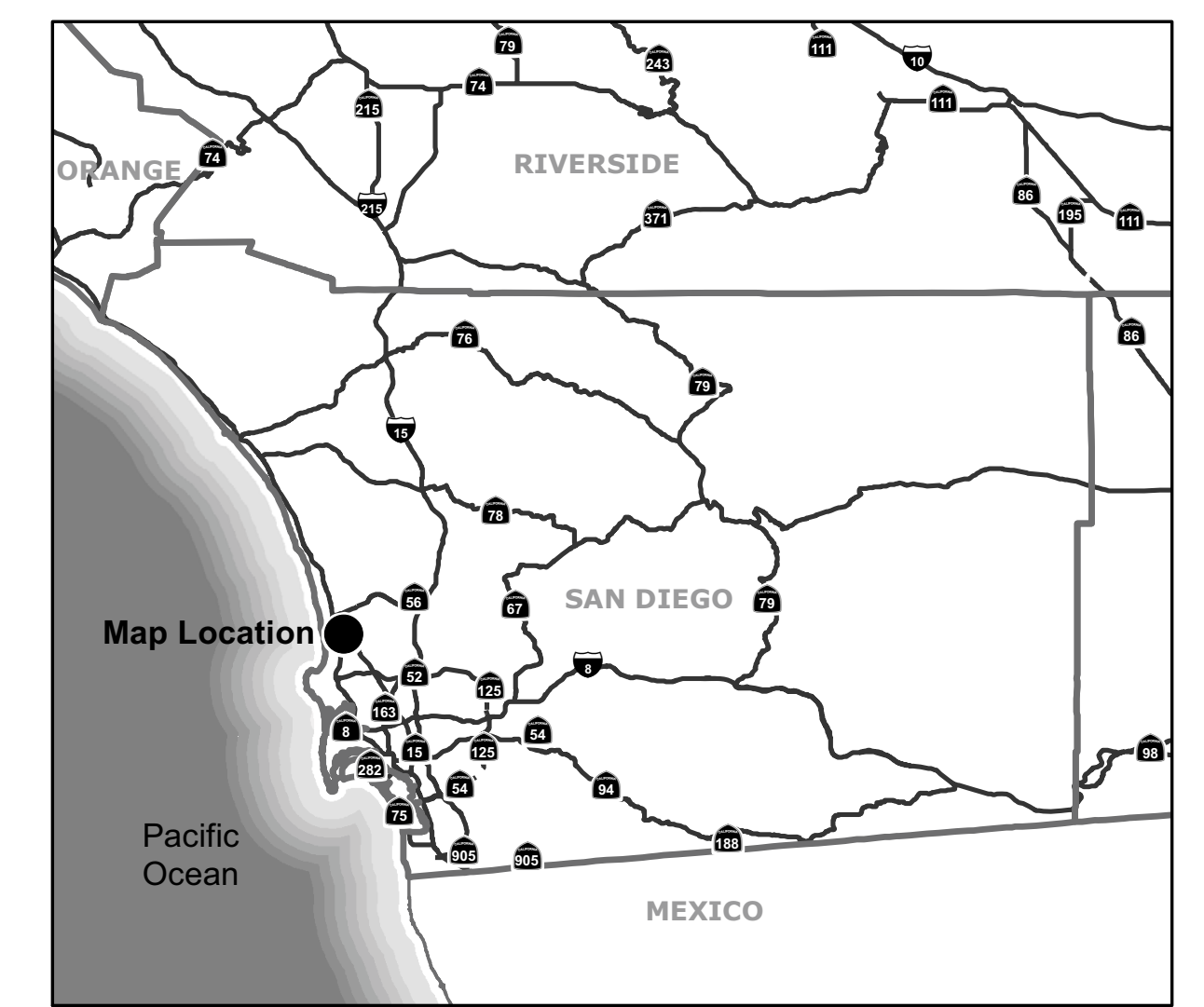


Existing Flood Plain

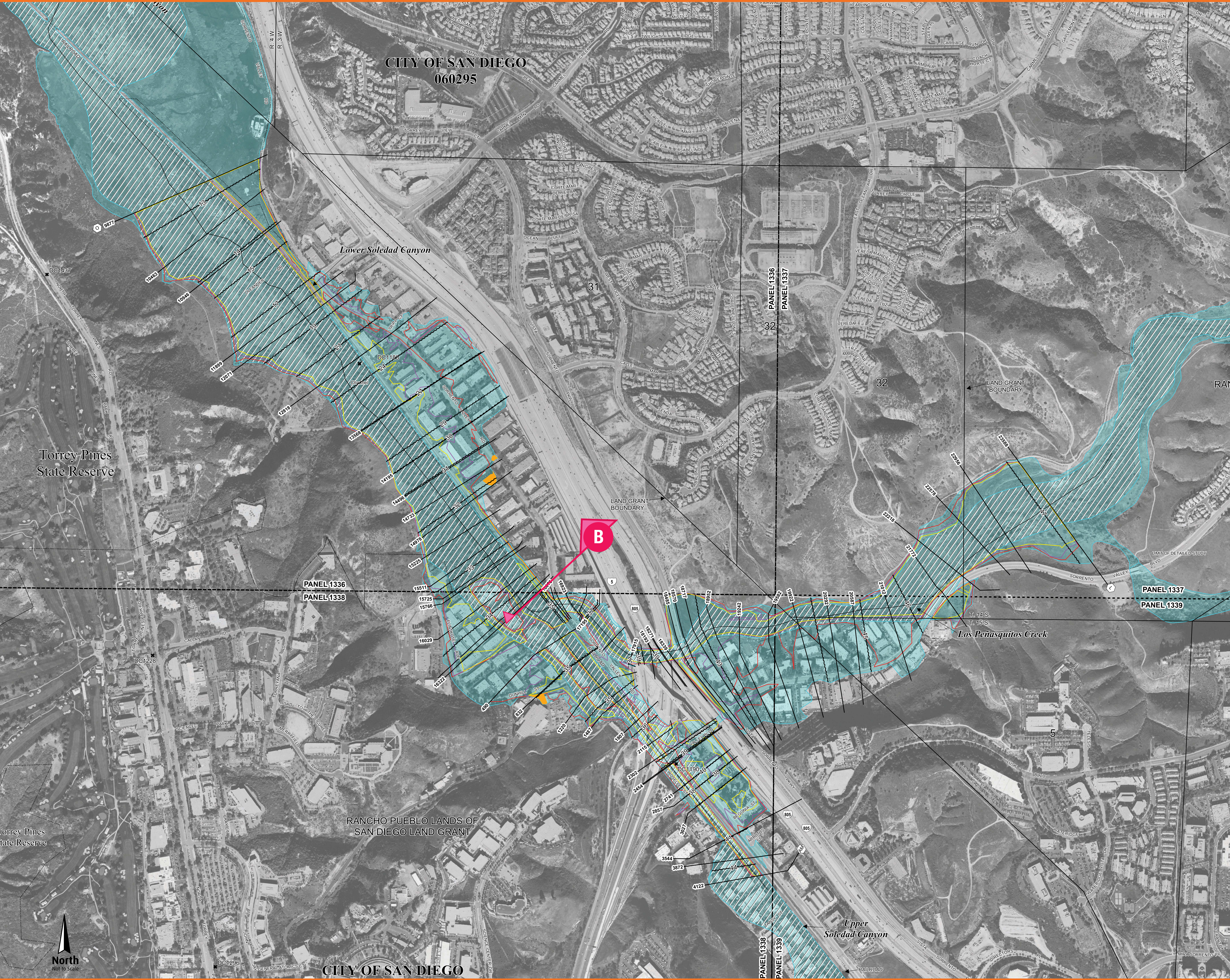


LEGEND

-  100 YR EXISTING FLOODPLAIN
-  100 YR EXISTING FLOODWAY
-  50 YR EXISTING FLOODPLAIN
-  2010 STORM EXISTING
-  10 YR EXISTING FLOODPLAIN
-  Base Flood Elevation line and value; elevation in feet*
*Referenced to the North American Vertical Datum of 1988
-  12818 Cross section line
-  EXISTING FEMA MAP NUMBERS



Post Project Flood Plain



LEGEND

- 100 YR POST PROJECT FLOODPLAIN
 - 100 YR POST PROJECT FLOODWAY
 - 50 YR POST PROJECT FLOODPLAIN
 - 2010 STORM POST PROJECT
 - 10 YR POST PROJECT FLOODPLAIN
 - INCREASE IN FLOODPLAIN
- Base Flood Elevation line and value; elevation in feet*
*Referenced to the North American Vertical Datum of 1988
- 12818 Cross section line
- EXISTING FEMA MAP NUMBERS

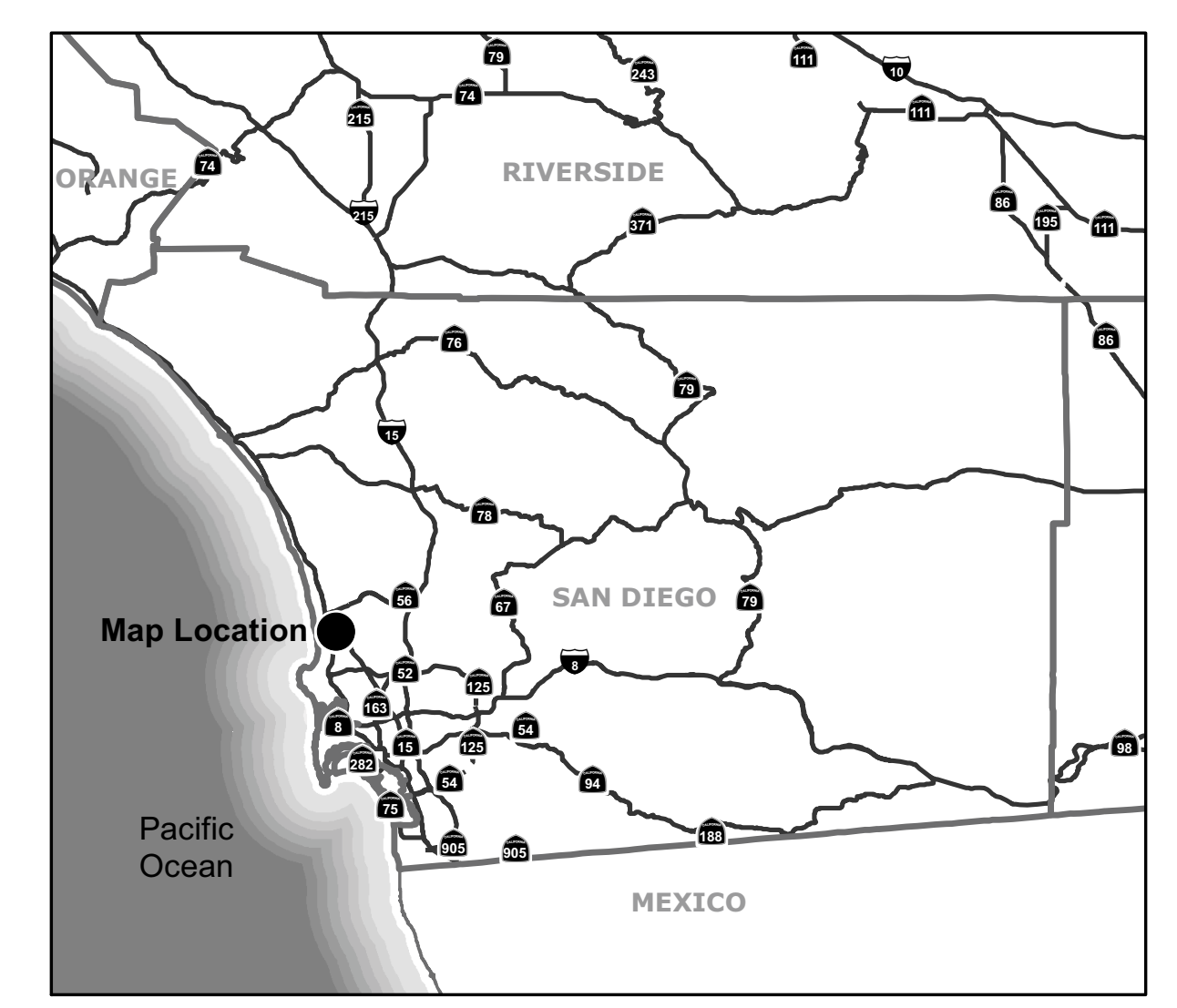
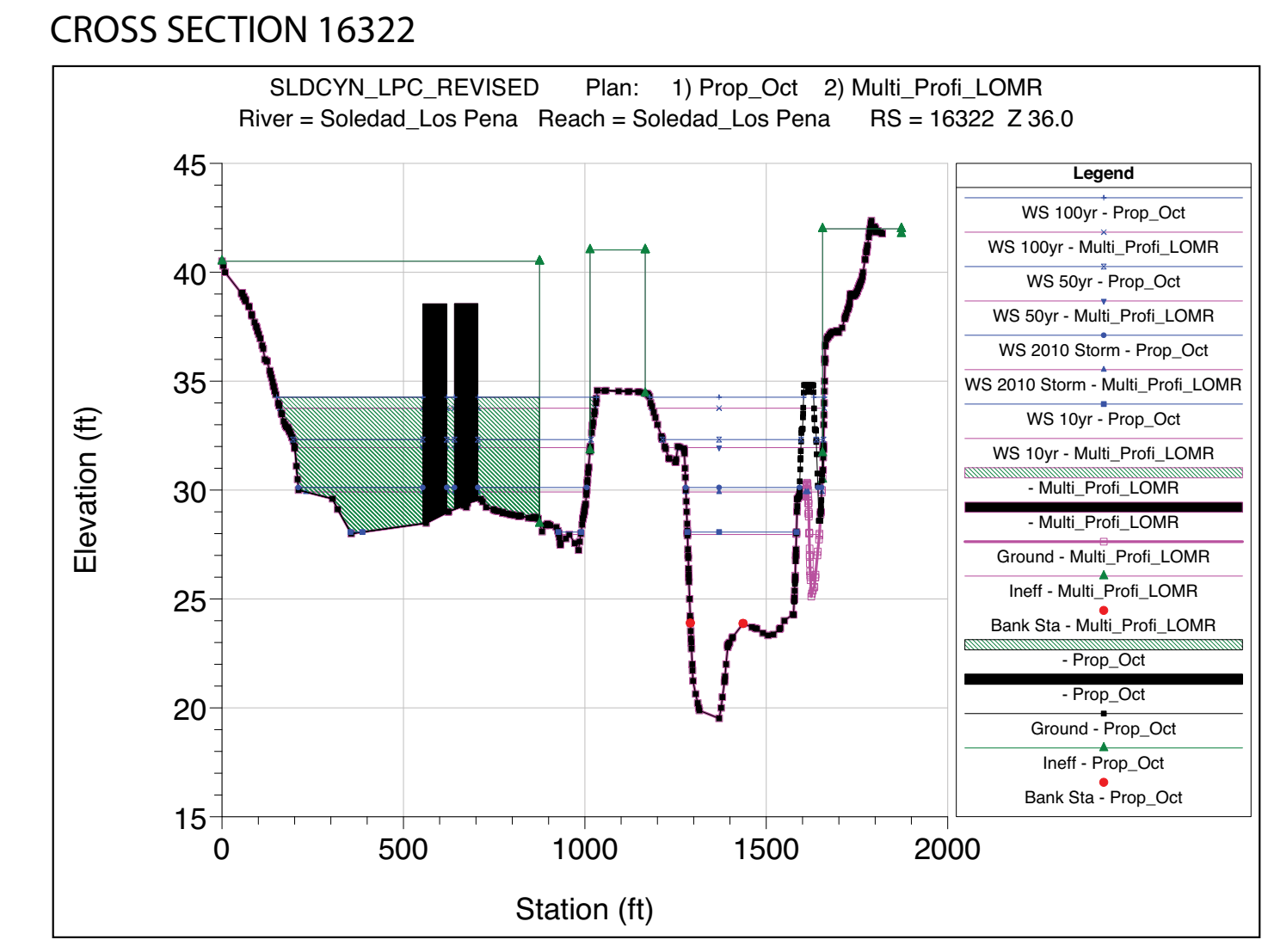
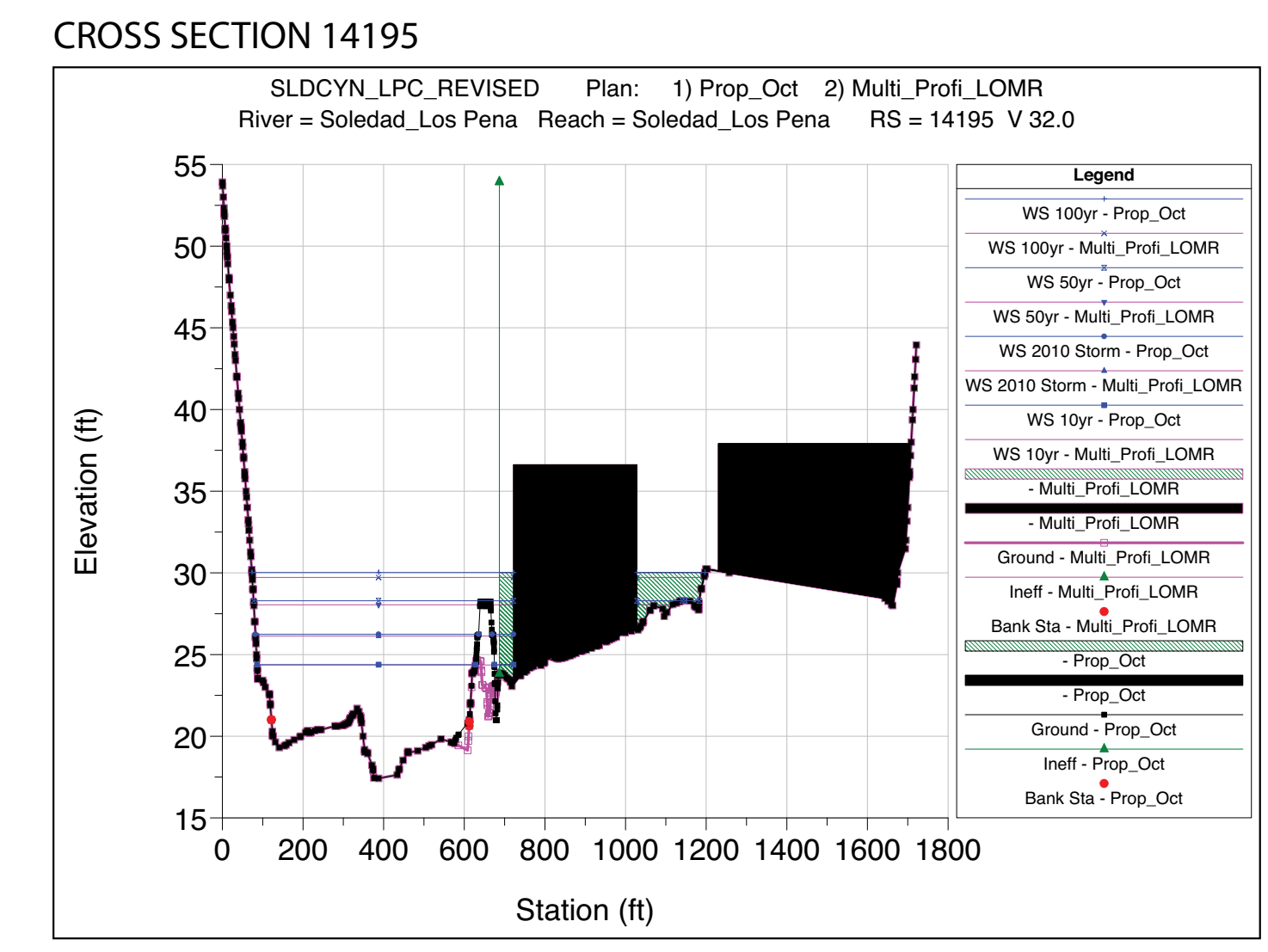
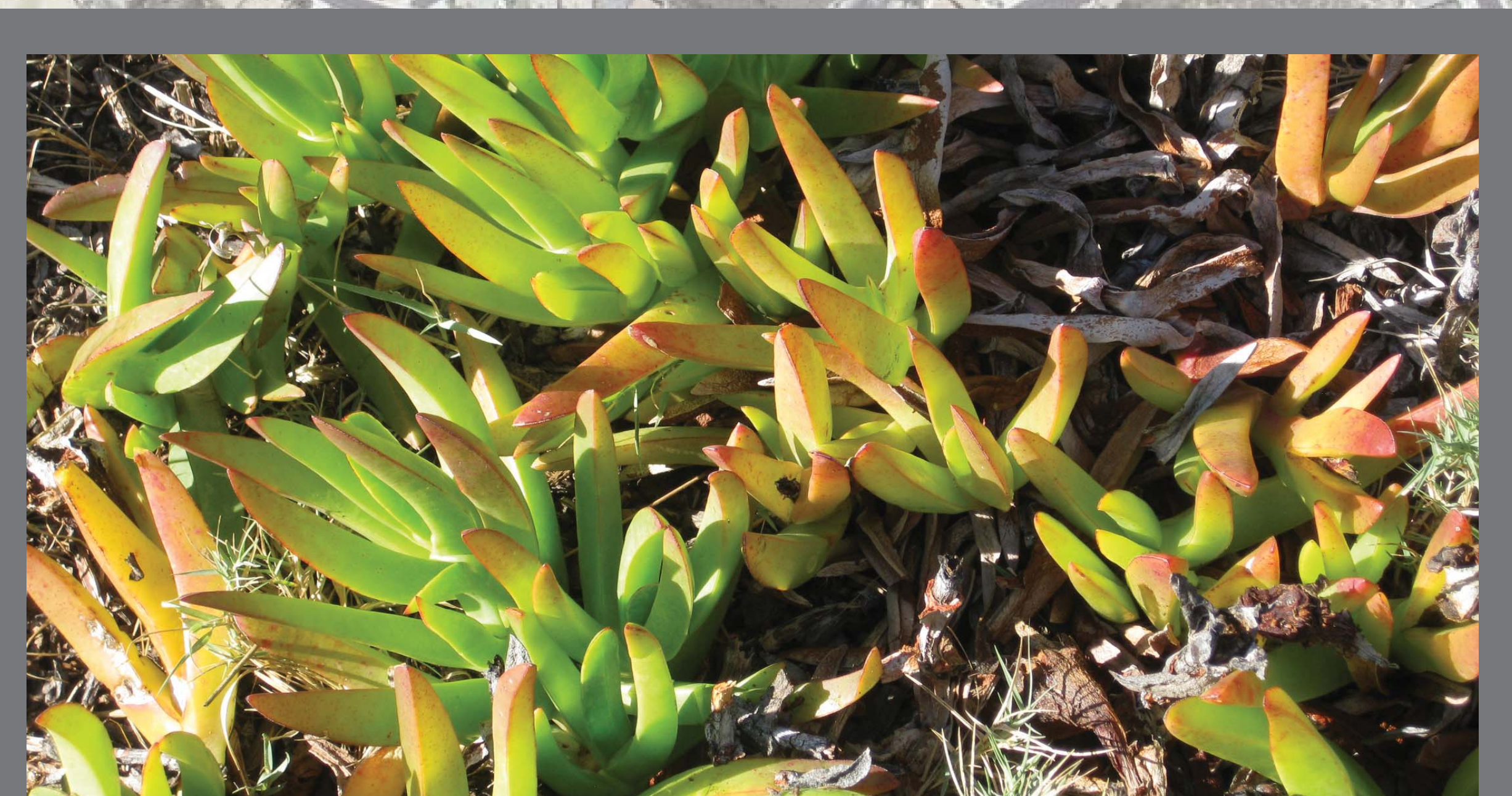




Photo Credit: USFWS Pacific Southwest Region

The project will restore wetlands to support native wildlife, including Belding's Savannah Sparrow.



Invasive plant species, such as ice plant, will be removed from the railroad right-of-way.

Park Access
Road Relocation

On-Site Wetlands Mitigation

Estimated Completion: Winter 2014

Habitat Restoration Planting Improvements

Estimated Completion: Winter 2014

MITIGATION MEASURES

- Replaces and restores wetlands affected by rail construction
- Allows more water to flow downstream near wetlands mitigation site during flood events
- Removes invasive plant species from the railroad right-of-way
- Developed in coordination with the California State Parks, Los Peñasquitos Lagoon Foundation, Regional Water Quality Control Board, US Army Corps of Engineers, and California Coastal Commission

Existing
Sorrento Valley
COASTER Station

