

Sorrento Valley Double Track Rail Improvement Project

PUBLIC INFORMATION OPEN HOUSE

Informational Slides

Please visit tables for more information

November 19, 2013





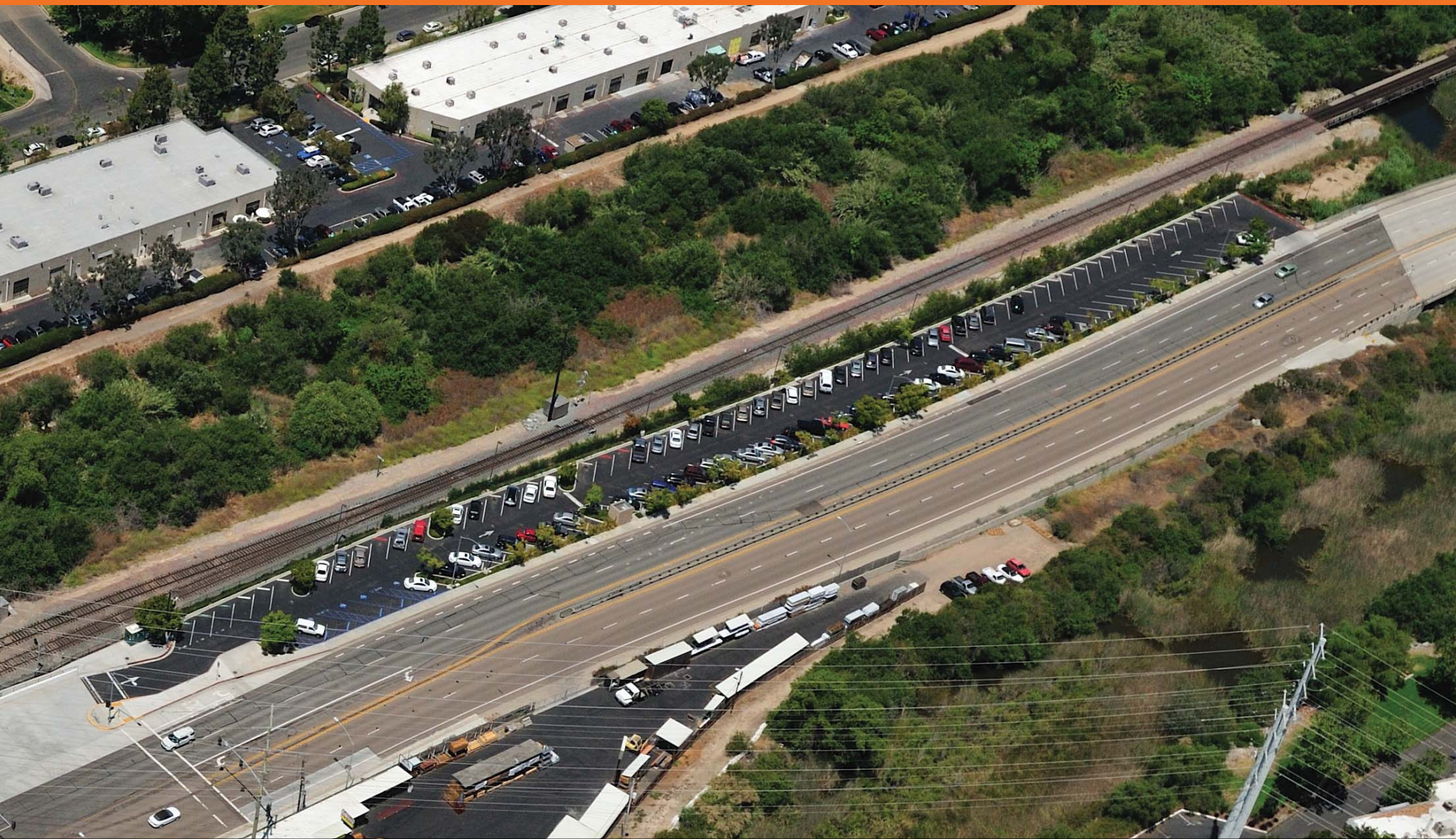
The Sorrento Valley transit station today looking south.



The Sorrento Valley transit station today looking northwest.



The Sorrento Valley transit station today looking east.



The existing parking lot at the Sorrento Valley transit station will be temporarily closed during construction. An additional parking lot will be built for this project resulting in a total of 189 spaces to serve transit riders at project completion.



**New Retaining Wall
To Be Added**

**81 New Parking Spaces
Including 4 Additional
ADA-accessible Spaces**

EXIT

ENTRANCE

A new 81-space parking lot will be built to the south of the existing station to serve riders during and after rail construction.



Portions of the existing track bed will be raised above the flood level of 50-year storm events to prevent disruption to rail service which occurred for a week in December 2010 as shown here.



An aging timber trestle bridge will be replaced with a concrete bridge.



An example of a new concrete trestle bridge similar to the one planned for the Sorrento Valley Double Track project.



The Los Peñasquitos creek runs adjacent to the railroad right-of-way and is home to many native wetland plant and animal species.



Photo Credit: USFWS Pacific Southwest Region

The project will restore wetlands to support native wildlife, including the Belding's Savannah Sparrow.



Invasive plant species, such as ice plant, will be removed from the railroad right-of-way.

For more information

CALL
858-549-RAIL (7245)

EMAIL
LOSSANRail@keepsandiegomoving.com

VISIT
KeepSanDiegoMoving.com

