

LOSSAN

Coastal Rail Corridor

San Diego Segment

Los Angeles • San Diego • San Luis Obispo



Poinsettia Station Improvement Project

What is LOSSAN?

- A 351-mile coastal rail corridor
- Stands for Los Angeles–San Diego–San Luis Obispo
- Second busiest U.S. passenger corridor
- Serves 41 stations
- 60-mile **San Diego Segment** connects Orange County to Downtown San Diego



Poinsettia Station Improvements

- North County Transit District (NCTD) maintains and manages operations of the Poinsettia Station
- Project Benefits:
 - Enhances pedestrian safety with protected access
 - Improves schedule efficiencies and travel times (reduced train delays)
 - Modernizes station amenities for a better ridership experience



Poinsettia Station Improvements



Planned improvements:

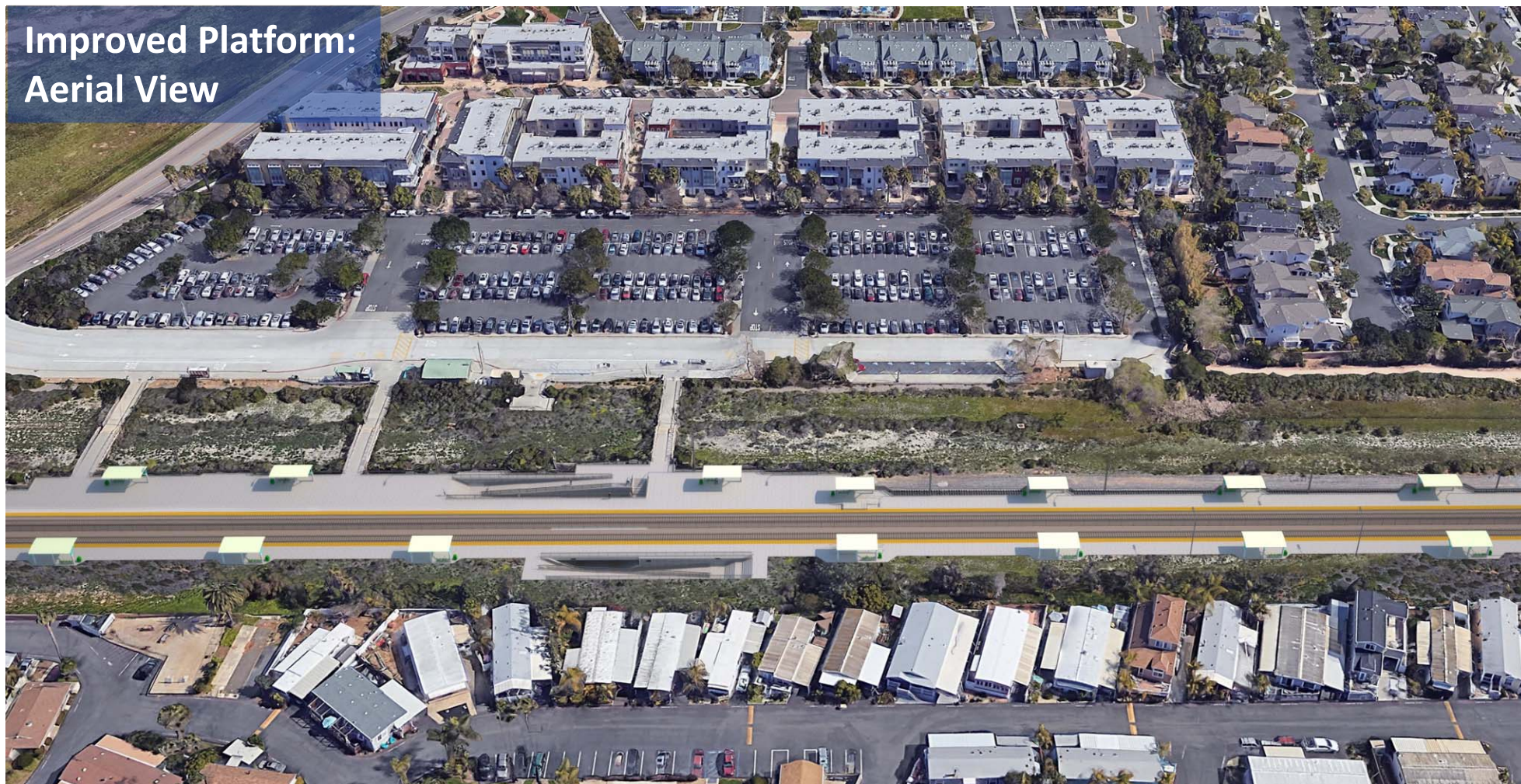
- Lengthened 1,000-foot boarding platform
- Elevated platform for level boarding
- New passenger undercrossing with stairs and ramps on both sides of tracks
- Installing fence between tracks within the station
- Relocating existing rail tracks
- Enhanced customer amenities
 - New canopies, signage, updated lighting



Platform Improvements – Visual Simulation



Improved Platform:
Aerial View



Platform Improvements – Visual Simulation



Improved Platform: Looking East

Platform Improvements – Visual Simulation



Improved Platform: Ramp Perspective

Construction: What to Expect

- Construction to begin in April 2018
- Construction completed in 2020
- Nearby residents/businesses can expect:
 - Construction noise
 - Dust
 - Intermittent night work
 - Lights
 - Service interruptions
 - Heavy equipment in right-of-way

Project Site Plan – Construction Staging



TYLININTERNATIONAL
engineers | planners | scientists

**POINSETTIA STATION IMPROVEMENTS PROJECT
STAGING AREAS**

- Ongoing construction outreach includes:
 - Postcard mailer
 - Station signage
 - Construction Info Sessions on platform with project team (2 weeks prior to start of construction)
 - Flier notification on vehicles parked at/near station
 - COASTER train seat drops
 - Web updates, eblasts, and social media (Facebook, Twitter and Instagram)
 - Briefings, as requested
 - Items in e-newsletters and other publications

To Learn More

- Online Information:
 - KeepSanDiegoMoving.com/PSI
- Sign Up to Receive Project Emails:
 - KeepSanDiegoMoving.com/contact
- Project Email Address and Construction Hotline:
 - LOSSANRail@KeepSanDiegoMoving.com
 - 858-549-RAIL
- Specific Project Questions:
 - Brandy Sweitzer, Senior Public Outreach Officer
 - 619-595-5610; Brandy.Sweitzer@sandag.org

