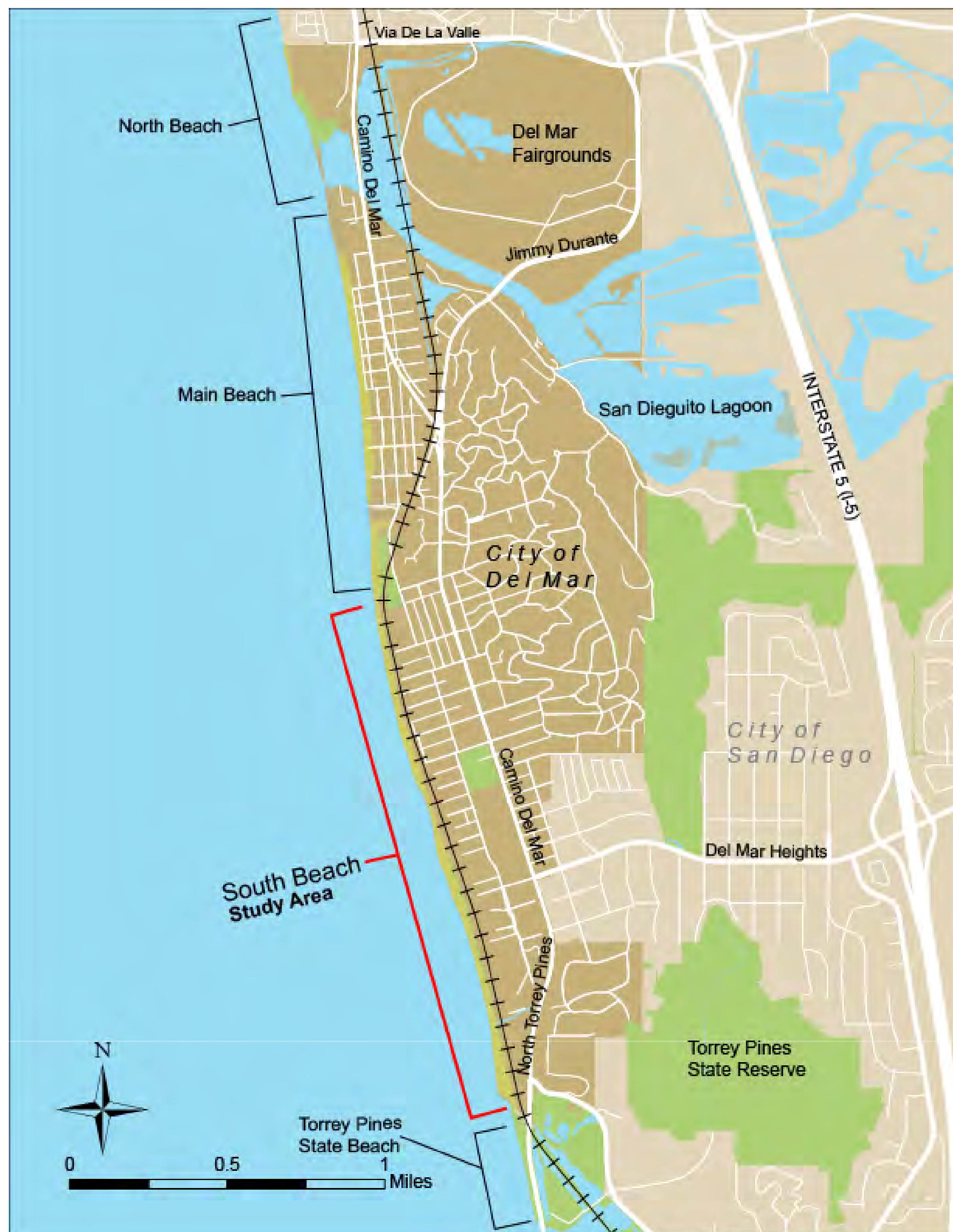




Coastal Connections Conceptual Planning Study



The Coastal Connections Conceptual Planning Study assesses the opportunities and constraints of potential pedestrian access improvements for a 1.6-mile section of the Los Angeles-San Diego-San Luis Obispo (LOSSAN) Railroad Corridor in the City of Del Mar.

Ways to Provide Feedback on this Study

- **Online Comment Period:** December 5, 2022 – January 31, 2023
- **Final Study Report:** February 2023

Please visit the study website to view all draft concepts and the full study report:
KeepSanDiegoMoving.com/CoastalConnections

