

SAN DIEGO REGIONAL RAIL ALTERNATIVE ALIGNMENT STUDY



ALTERNATIVE ALIGNMENT STUDY STATUS

Schedule:

Study is expected to take 18 – 24 months

Budget

Estimated \$5 million

IMPORTANCE OF THE LOSSAN RAIL LINE

The Los Angeles-San Diego-San Luis Obispo (LOSSAN) corridor is the economic lifeline for the San Diego region and serves as a crucial link for national and international commerce. The corridor moves nearly 8 million passengers per year and is the second busiest intercity corridor in the nation. In terms of freight, BNSF Railway runs more than 30,000 freight cars per year along the corridor, carrying about \$1 billion worth of goods. The corridor plays a vital role in our nation's defense by providing rail access to the Pacific Fleet, a network of key military bases throughout San Diego County and the Port of San Diego. The corridor also provides access to the region's 43 miles of beaches and recreational areas. SANDAG is currently commissioning an in-depth analysis of the economic impacts of LOSSAN rail corridor to the San Diego region.

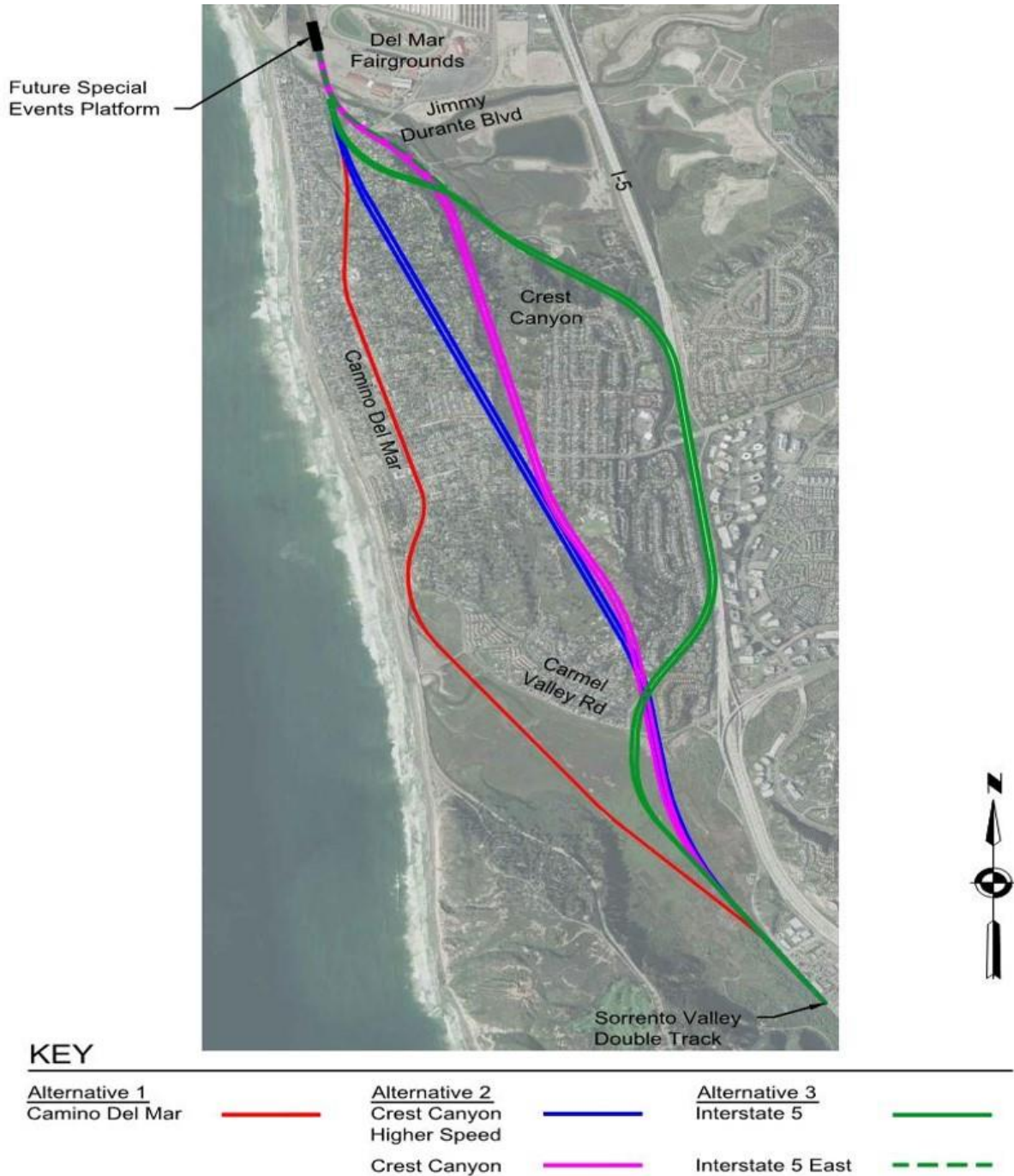
NEED FOR ALTERNATIVE ALIGNMENT STUDY

Recent erosion of the Del Mar Bluffs has underscored the immediate need to identify a long-term solution for the corridor. Near-term improvements will be constructed in early 2020 (known as Del Mar Bluffs 4), and the San Diego Association of Governments (SANDAG) and the North County Transit District (NCTD) are seeking \$100 million to complete the bluff stabilization work (known as Del Mar Bluffs Phases 5 and 6).

Simultaneously, to ensure the long-term viability of the corridor, SANDAG is seeking \$5 million to evaluate alternative strategies to move the tracks completely off the bluffs. The scope of this work would include:

- Alternative alignment analysis (including preliminary engineering)
- Safety and speed assessment of existing corridor conditions
- Benefits and costs of alternative alignments and improvements (such as speed, safety, and ridership compared to capital costs, impacts of sea level rise, right of way, and constructability)
- Service plans for all operators
- Implementation plan for service and capital improvements
- Future alignment extensions

POTENTIAL FUTURE ALIGNMENT ALTERNATIVES



FOR MORE INFORMATION OR TO SIGN UP FOR PROJECT UPDATES:

Visit: KeepSanDiegoMoving.com/PSI | Call: (858) 549-RAIL | TTY: (619) 699-1904 | Email: LOSSANRail@KeepSanDiegoMoving.com

sandagregion | gonctd SANDAG | GoNCTD SANDAGregion | GoNCTD SANDAGregion | NCTD

