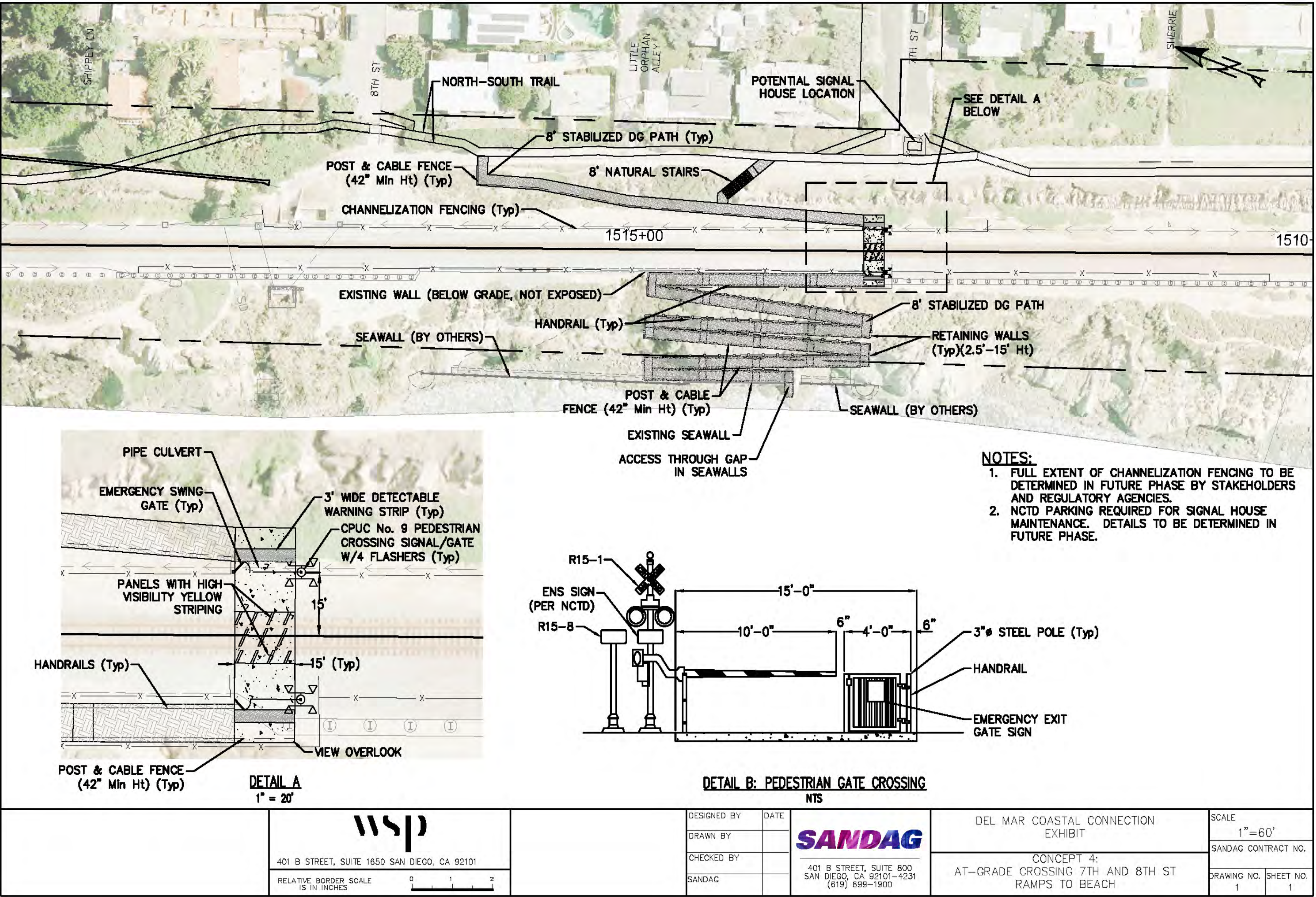




Concept 4: At-Grade Crossing at 7-8th Street

Ramps to Beach

This at-grade railroad crossing takes advantage of existing east-west movement patterns near 7th and 8th Streets.



Notable features include:

- **Accessible Paths & Ramps:** All paths except natural stairs, including the ramps on the western bluffs, feature ADA-compliant grades and can utilize a special form of stabilized decomposed granite for an accessible surface. Ramps on the bluffs may require retaining walls, some of which may be below grade and/or covered with fill and landscaping to reduce visual impacts.
- **View Overlook:** On the western bluff top, a view overlook is a new amenity that would be accessible from 7th Street and optionally Concept 1, North-South Trail.
- **At-Grade Railroad Crossing:** Located near the end of 7th Street and includes:
 - o Gates, Lights & Bells: Standard safety features per CPUC requirements.
 - o Safety Fencing: Full extent to be determined in collaboration with CPUC, CCC, NCTD, and City of Del Mar.
 - o Signal House: Requires NCTD access and parking from the end of 7th Street.
- **Connections to 7th & 8th Streets:** Accessible path from 8th Street and natural stairs near 7th Street connect to the existing network. These also feature optional connections to Concept 1, North-South Trail.

