



# ***I-805 South Project***

*BUILDING CHOICES FOR SOUTH COUNTY*

Transportation Development Institute of ASCE

April 16, 2014



# I-805 Corridor Projects



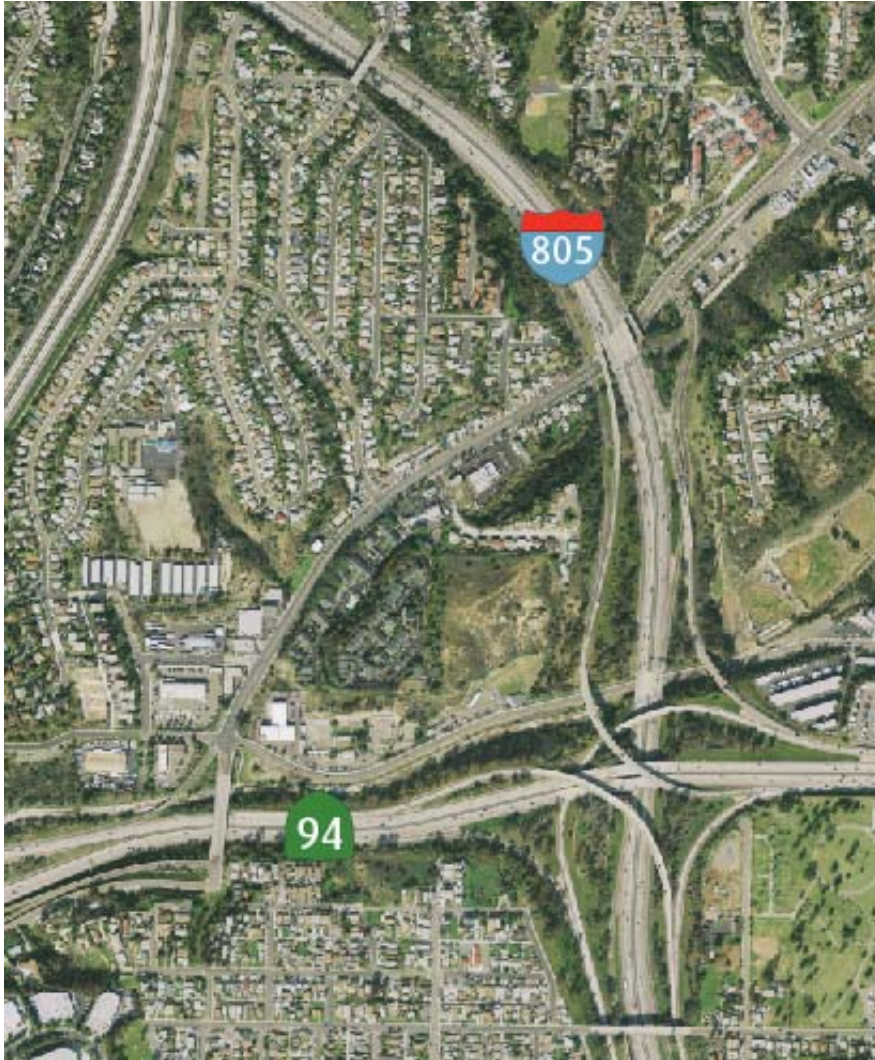
- ◆ I-805 opened to traffic in the early 1970s
- ◆ I-805 is a major north-south freeway (U.S./Mexico border to the south and I-5 interchange to the north)
- ◆ Approximately 29 miles in length with 8-to-10 lanes
- ◆ Traverses central portion of the San Diego urbanized area
- ◆ Runs parallel to I-5 providing an alternative north-south inland route
- ◆ Serves as a commuter route providing direct access from newly developed residential areas in the South Bay and major employment centers in central San Diego





# I-805 Corridor

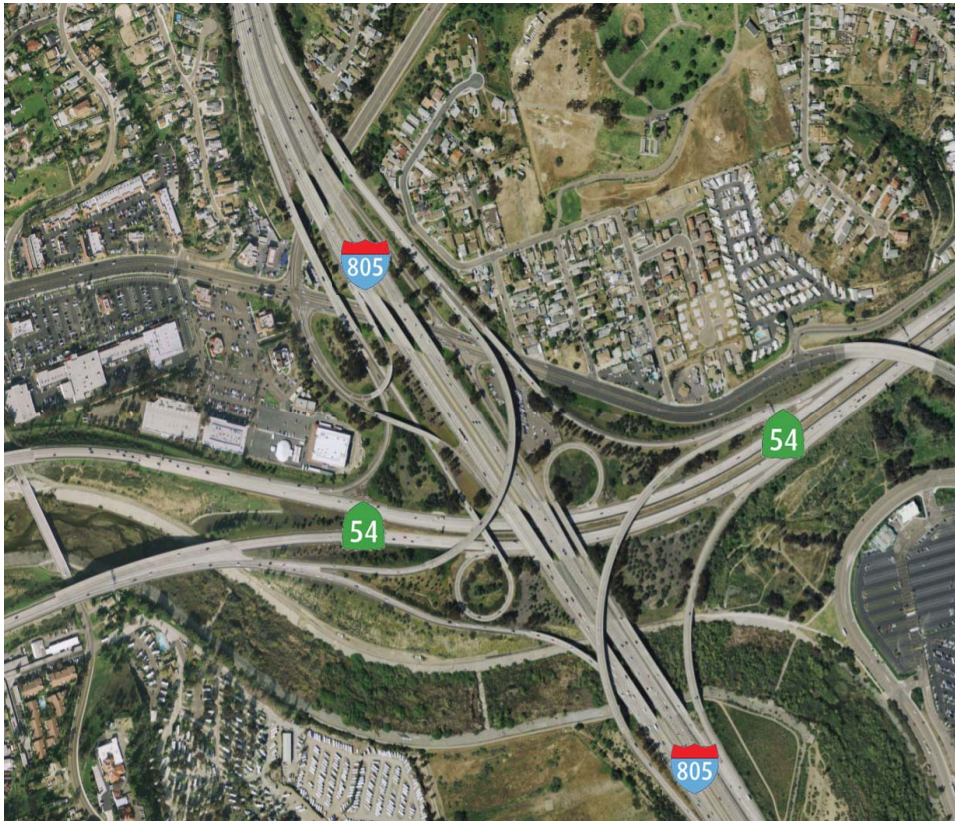
## Current Travel Demand



- ◆ Serves both intra-regional and inter-regional travel demand
- ◆ Operates over capacity during weekday peak periods including 3.5 hours in the AM and 3.5 hours in the PM
- ◆ Operates at LOS F for 64% of its 29 miles during peak hours
- ◆ Provides primary goods movement from the Otay Mesa Port of Entry (POE) to the local, state and national markets



# I-805 Corridor Future Travel Demand



- ◆ By 2030 population growth in the study area is expected to increase 39% and job growth is expected to increase 28%, higher than the regional average
- ◆ Traffic forecasts indicate that travel demand on the I-805 corridor will increase by 50 percent in 2030
- ◆ Without improvements, additional segments of the corridor are projected to operate at LOS F in 2030
- ◆ Traffic data indicates that transportation system improvements are needed to address increased travel demand in 2030
- ◆ Need to provide multimodal alternatives





# Project Overview



- ◆ Roughly 11 miles
- ◆ East Palomar Street to I-805/SR 15 Interchange
- ◆ Project Features
  - HOV/Express Lanes
    - Carpools/vanpools/motorcycles
    - Permitted clean air vehicles
    - Solo drivers – FasTrak®
    - Bus Rapid Transit (BRT)
  - Multiple Entrances/Exits
  - Direct Access Ramp (DAR)
  - In-Line Transit Stations
  - Park & Ride Locations
  - HOV Freeway-to-Freeway Direct Connector

# Phase 1



## ◆ HOV Lanes from SR 54 to SR 94

- One striped lane in each direction (4 miles)
- Construction began summer 2012
- Complete in March 2014

## ◆ HOV Lanes from East Palomar to SR 54

- One striped lane in each direction (4 miles)
- Construction began summer 2012
- Complete in March 2014

## ◆ East Palomar DAR

- Construction began spring 2013
- Complete in early 2015

## ◆ Sound Walls

- Construction began in fall 2013
- Complete in late 2014

# Phase 1 (2012 – 2014) HOV Lanes





# Phase 1 HOV Lanes Open to Traffic





# Phase 1 HOV Lanes Benefits and Users

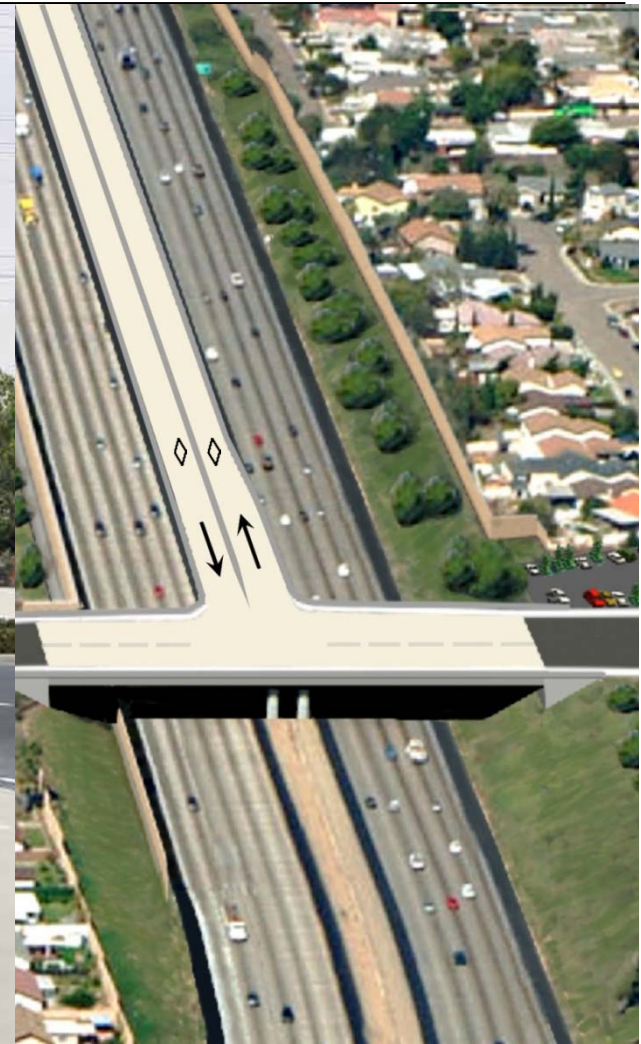


- ◆ HOV Lanes
  - Improve traffic flow
  - Alleviate congestion
  
- ◆ HOV Lanes Users
  - Bus Rapid Transit system
  - Carpools
  - Vanpools
  - Motorcycles
  - Permitted clean air vehicles



# Phase 1 (2013 – 2015)

## Palomar DAR, Transit Station and Park & Ride





# Palomar DAR Under Construction





# Phase 1 (2013 – 2014) Sound Walls



*Sample Wall Design*





# Phase 1 Sound Walls Under Construction



# Phase 2 (2016 – 2020) Expanded HOV Lanes





# Phase 2 (2016 – 2020) In-Line Transit Stations



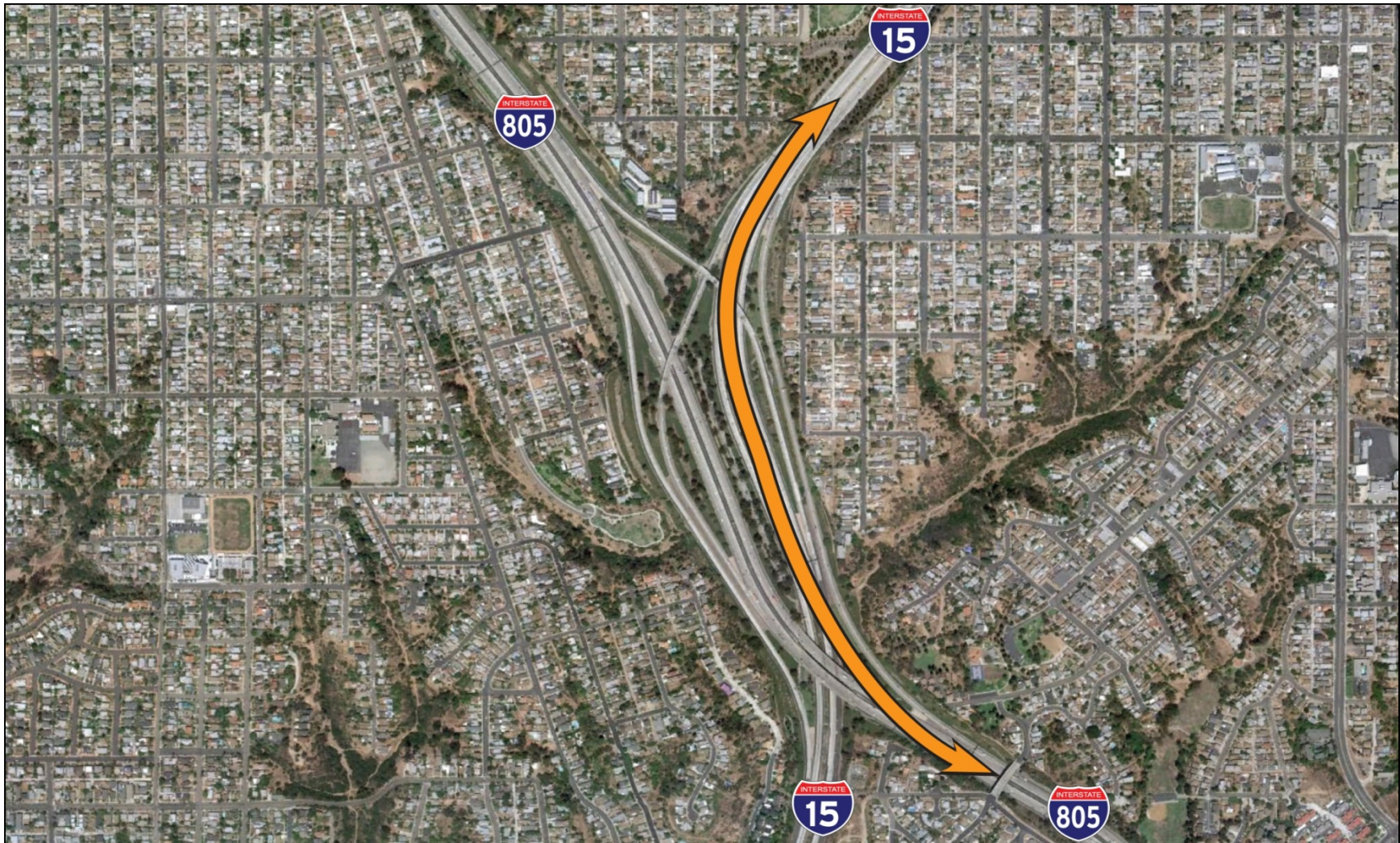
*Design Concept*





# Phase 2 (2016 – 2020)

## HOV Freeway-to-Freeway Direct Connectors

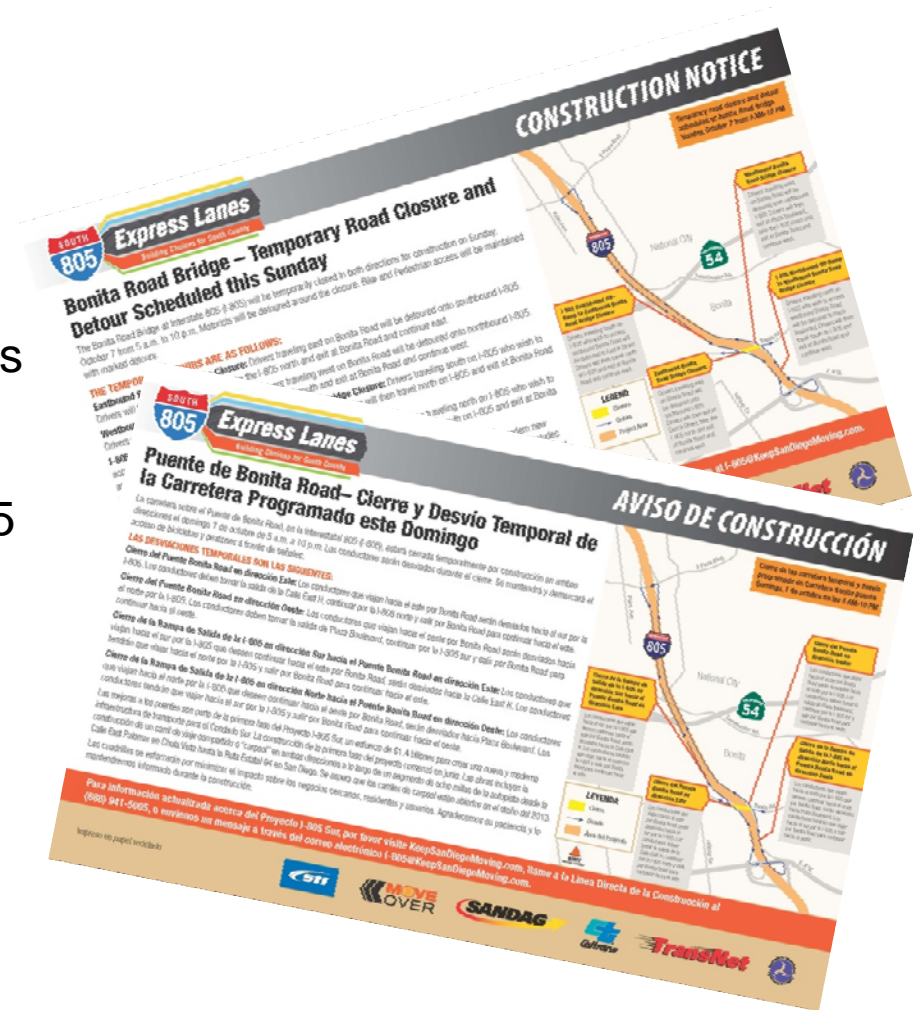




# Construction Outreach



- ◆ Construction workshops
- ◆ Regular project updates
- ◆ Advance construction notices
- ◆ Website updates, eblasts and letters
- ◆ Social media
- ◆ Construction hotline (888) 941-5005
- ◆ Newsletters
- ◆ Multicultural



# For More Information



## Websites:

[KeepSanDiegoMoving.com](http://KeepSanDiegoMoving.com)

[511sd.com](http://511sd.com)

[dot.ca.gov/dist11](http://dot.ca.gov/dist11)

## Social Media:



@SDCaltrans  
@SANDAG



SANDAGregion



SANDAGREGION

## Construction Hotline:

1 (888) 941-5005

## Email:

[I-805South@KeepSanDiegoMoving.com](mailto:I-805South@KeepSanDiegoMoving.com)