

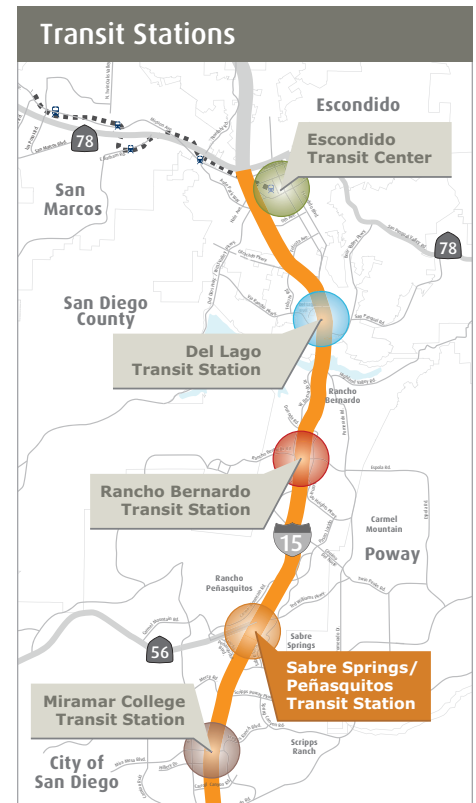
Sabre Springs/Peñasquitos Transit Station Fact Sheet

Innovative. Smart. Sustainable. The new Sabre Springs/Peñasquitos Transit Station, located at Sabre Springs Parkway south of Ted Williams Parkway, opened to customers and transit services in March 2014, after a year of construction. During that year, it was upgraded from a Park & Ride lot with bus service to a world-class, next generation transit facility that will support a variety of transit choices including the future I-15 Rapid bus services that will launch in summer 2014.

Highlighted here are the innovative, smart, and sustainable features of the new station.



Photo simulation of the new parking structure



Smarter Ways to Park & Ride

The new station features provide a better customer experience with more amenities than before. Parking features include:

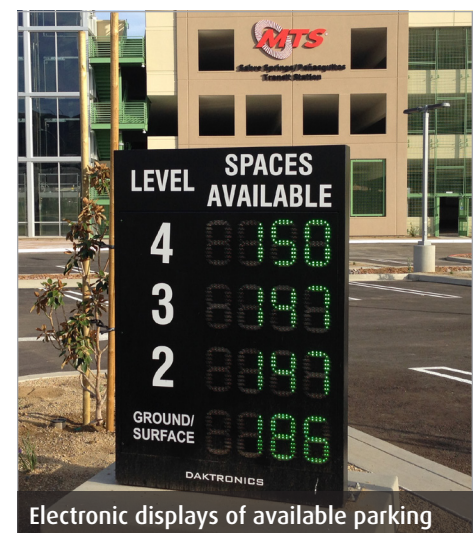
- ▶ 630 parking spaces
- ▶ 4-level parking structure open from 4:30 a.m. to midnight
- ▶ 52 designated clean-air vehicle and vanpool parking spaces
- ▶ 10 electric vehicle charging stations
- ▶ 2 electronic parking occupancy display signs

The station includes an innovative “smart” parking management system that provides users with electronic display

signs at the entrance of the structure and the surface lot that will show how many spaces are available. In the future, this parking management system will allow customers to reserve parking spaces.

This station also offers transit riders added conveniences by providing:

- ▶ Modern bus shelters
- ▶ Next vehicle arrival signs
- ▶ Enhanced bus staging area
- ▶ Security cameras
- ▶ Secure bicycle parking
- ▶ Sustainable building design features



Electronic displays of available parking

Transit and Ridesharing

The station is currently served by MTS Commuter Express Bus service. In summer 2014, Rapid bus services will connect customers along the I-15 corridor to Downtown San Diego and other employment centers. The station's increased parking capacity allows more commuters to participate in vanpools or carpools. A Direct Access Ramp provides more reliable trip times by connecting to the I-15 Express Lanes from this station for vanpools, carpools, permitted clean-air vehicles, motorcycles, and solo drivers using a FasTrak® account. To sign up for a FasTrak account or find ride matching services, go to 511sd.com/FasTrak or 511sd.com/iCommute.



Bicycling

Another travel choice is geared toward helping people power their trip to and from the station. The station now includes a modular bike parking facility. It includes:

- ▶ Enclosed parking for 20 bicycles
- ▶ Secure access
- ▶ Repair station with air inflator and tools

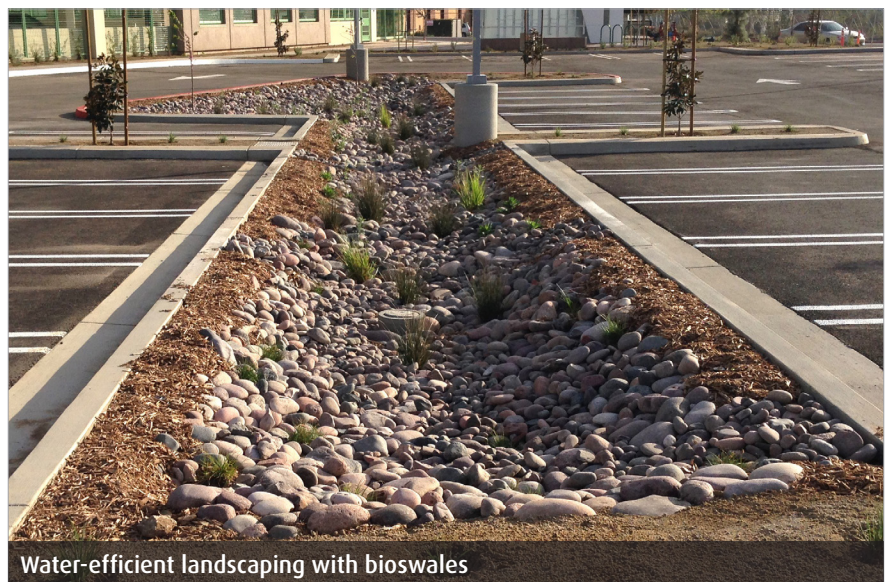
To use the bicycle station, register your Compass Card at 511sd.com/iCommute.



Green Building

Sustainable travel choices start with the environmentally-friendly design of the station itself which includes:

- ▶ Recycled materials from local sources to reduce landfill waste and lessen emissions caused by transporting materials long distances to the site
- ▶ Low VOC paints and coatings
- ▶ 210 roof-top photovoltaic panels that power lighting for the parking structure
- ▶ Stormwater protection measures include bioswales in the parking lot that filter water before it enters the storm drain system
- ▶ Drought-tolerant landscaping



Station Information

- ▶ KeepSanDiegoMoving.com
- ▶ SDMTS.com

Plan Your Trip

- ▶ Call 511
- ▶ 511sd.com

 @SANDAG
@sdmts
@SDCaltrans

 SANDAGregion
SDMTS

 SANDAGregion
SanDiegoMTS