

Acquisition Number: 5
 Name: Zwesteria
 Acquisition Date: 01/30/09
 Location: San Luis Rey
 Acres: 19.38

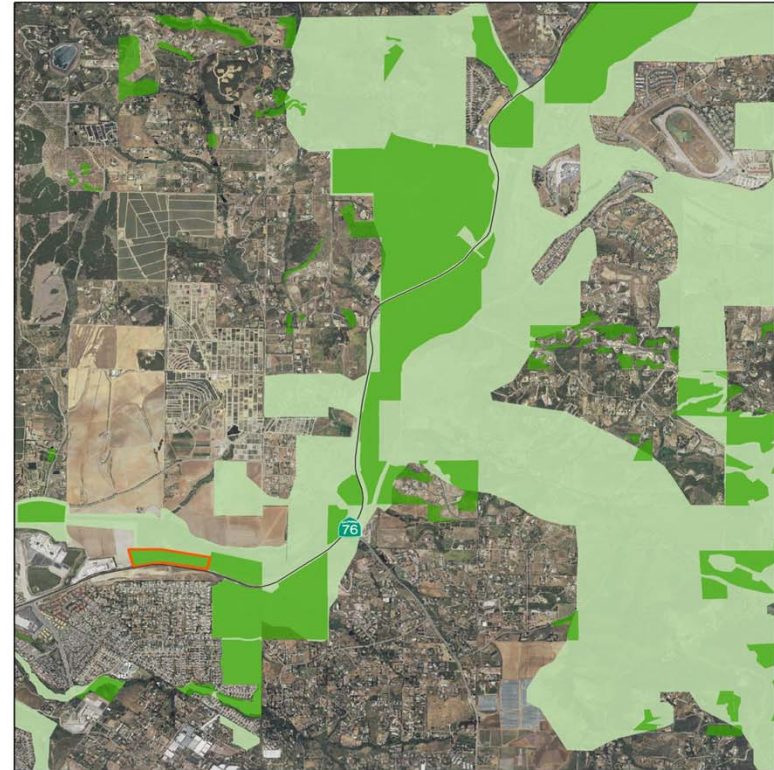
Habitat Types: Acres:
 Riparian Forest: 4
 Disturbed/Former Agriculture: 15.38

2030 RTP Project Mitigation: Type: Acres:
 SR 76 (Melrose to Mission): Upland: 7
 SR 76 (Melrose to Mission): Wetlands: 12.38

Ownership: Caltrans
 Management: Caltrans
 Conservation Easement to SANDAG: No
 Native Habitat Restoration Proposed: No



Zwesteria, San Luis Rey River



Environmental Mitigation Program
 ZWIERSTRA - Bonsall

- Zwierstra
- Conserved Land
- NCCP Proposed Conservation Area



0 0.25 0.5 Miles
 2010 Eagle Aerial Imagery



NCCP = Natural Community Conservation Planning (Program)