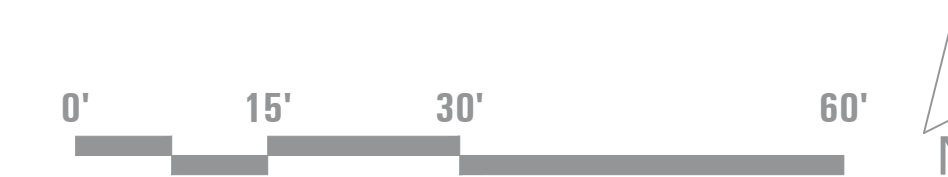
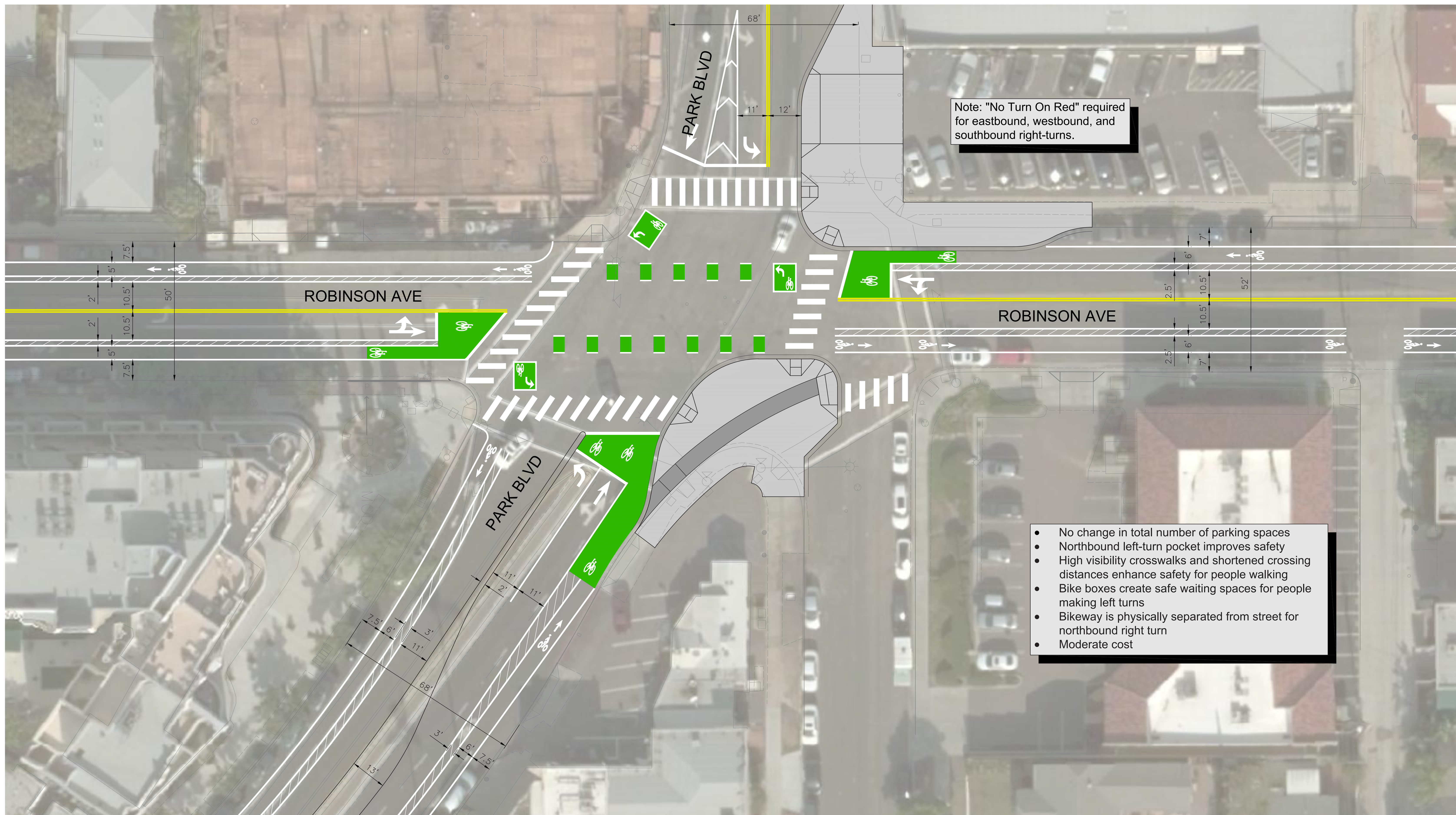


# PARK BOULEVARD BIKEWAY



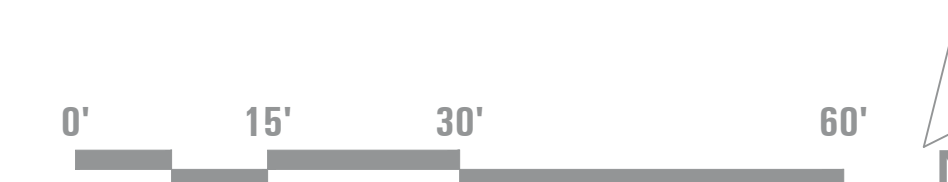


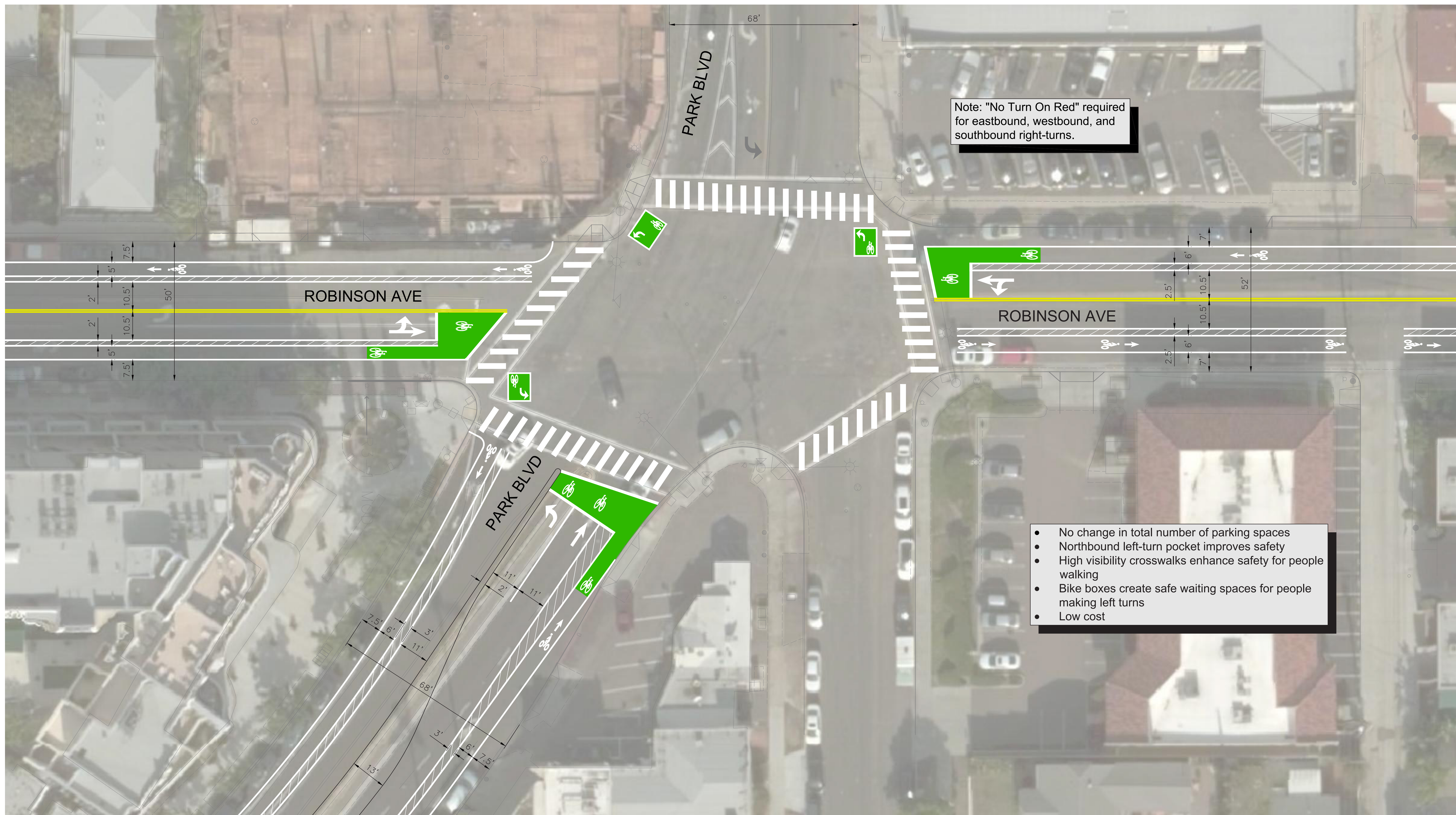
Note: "No Turn On Red" required for eastbound, westbound, and southbound right-turns.

- No change in total number of parking spaces
- Northbound left-turn pocket improves safety
- High visibility crosswalks and shortened crossing distances enhance safety for people walking
- Bike boxes create safe waiting spaces for people making left turns
- Bikeway is physically separated from street for northbound right turn
- Moderate cost

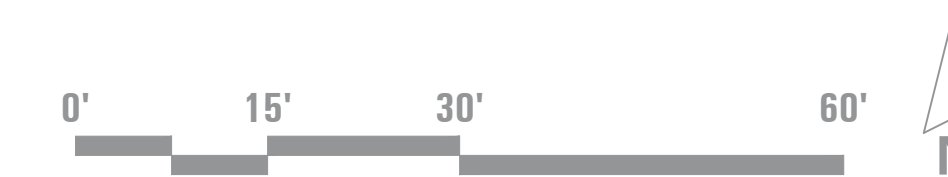


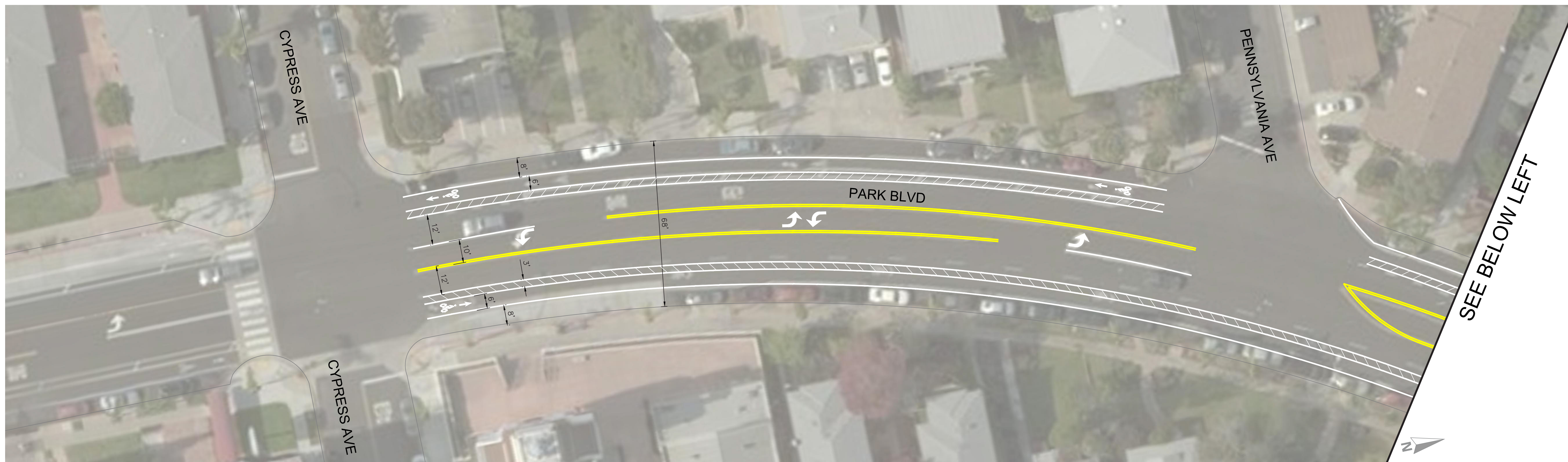
# PARK BOULEVARD BIKEWAY





# PARK BOULEVARD BIKEWAY





# PARK BOULEVARD BIKEWAY

