



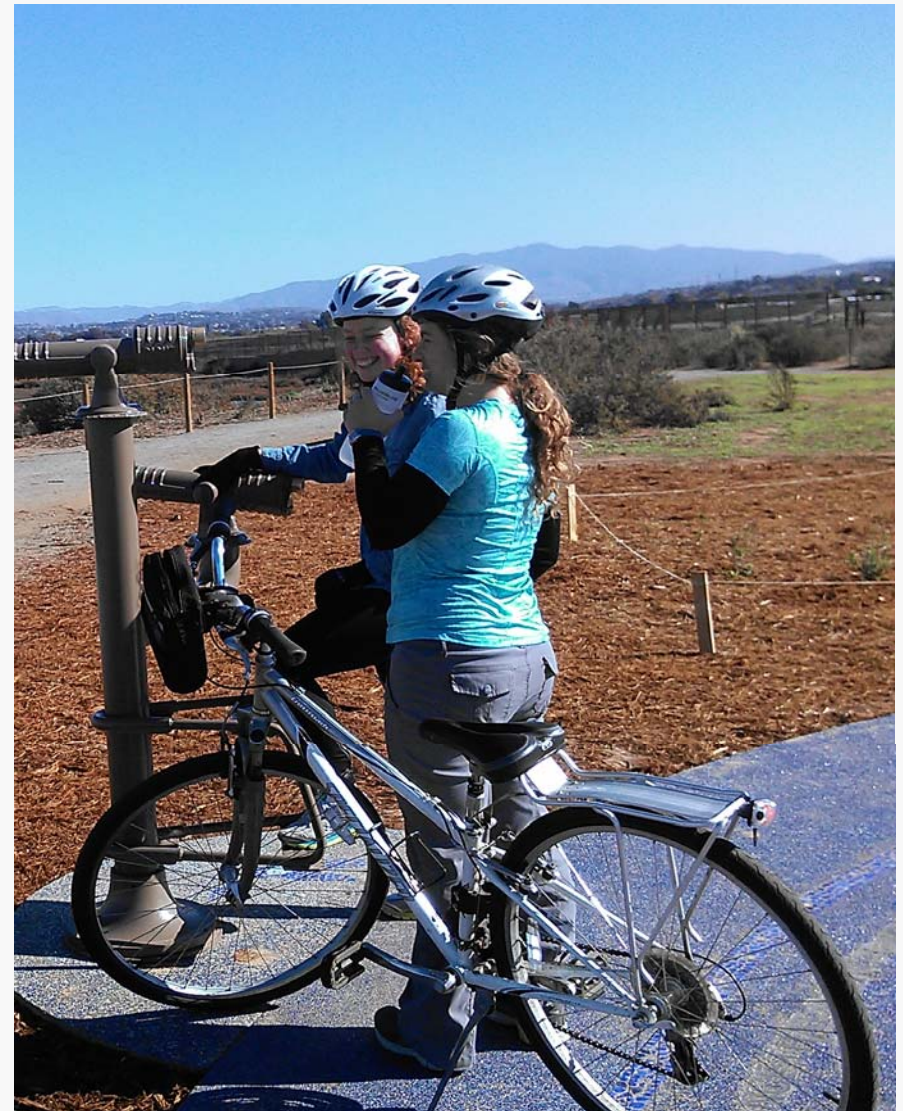
# BORDER TO BAYSHORE BIKEWAY

Otay Mesa-Nestor Community Planning Group  
April 12, 2017

# REGIONAL BIKE PLAN EARLY ACTION PROGRAM



- Adopted by the SANDAG Board of Directors in September 2013
- 41 projects with cost totaling \$200 million
- 36 projects funded through construction phase
- FY 2017 CIP includes 25 high-priority projects





# EVERYDAY PEOPLE, EVERYDAY TRIPS

No way

Interested,  
but concerned

*(potential bikeway users)*

Anywhere, anytime





# BIKE EAP DESIGN PRINCIPLES

## SAFE “LOW STRESS” STREETS

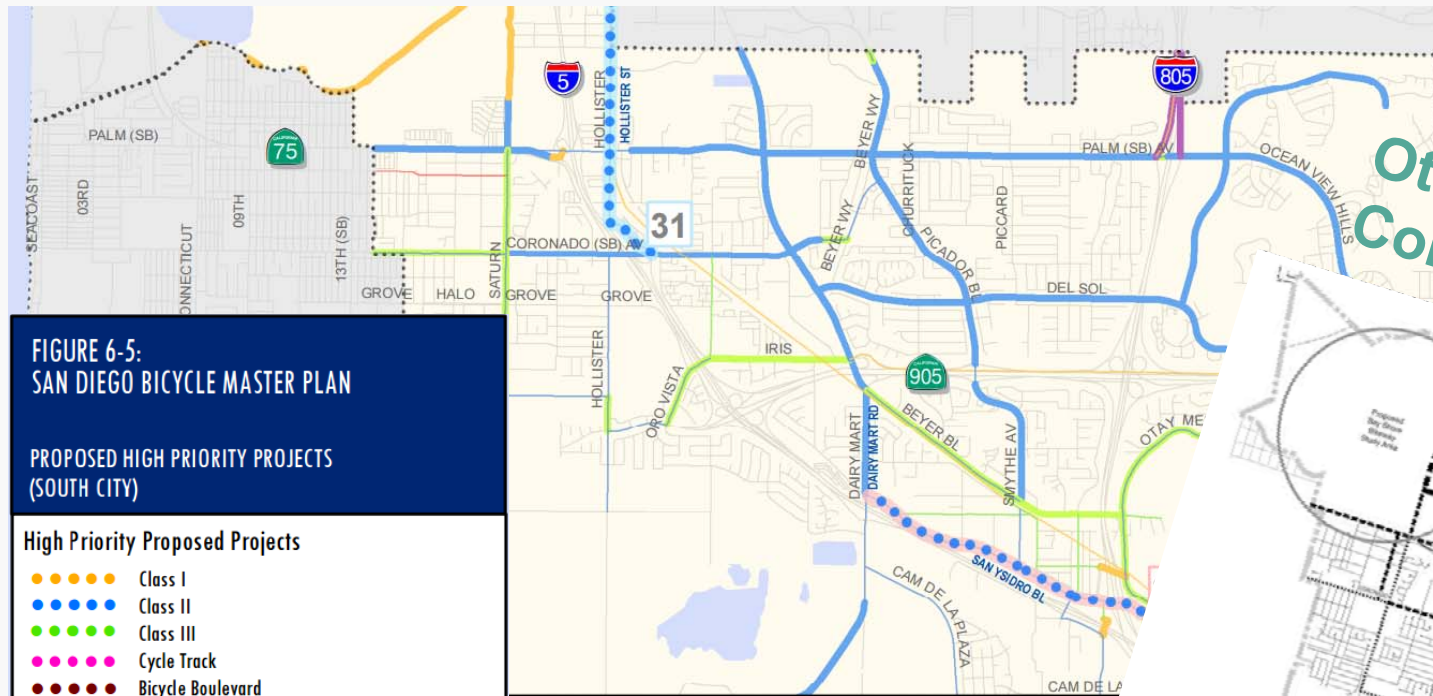
- Safe movement of people
- Protected bikeways provide separation
- Traffic calming to reduce speeds
- Challenges in urban areas due to limited space and competing uses





# BORDER TO BAYSHORE BIKEWAY PREVIOUS PLANNING EFFORTS

## City of San Diego Bicycle Master Plan



**FIGURE 6-5:  
SAN DIEGO BICYCLE MASTER PLAN**

**PROPOSED HIGH PRIORITY PROJECTS  
(SOUTH CITY)**

**High Priority Proposed Projects**

- Class I
- Class II
- Class III
- Cycle Track
- Bicycle Boulevard

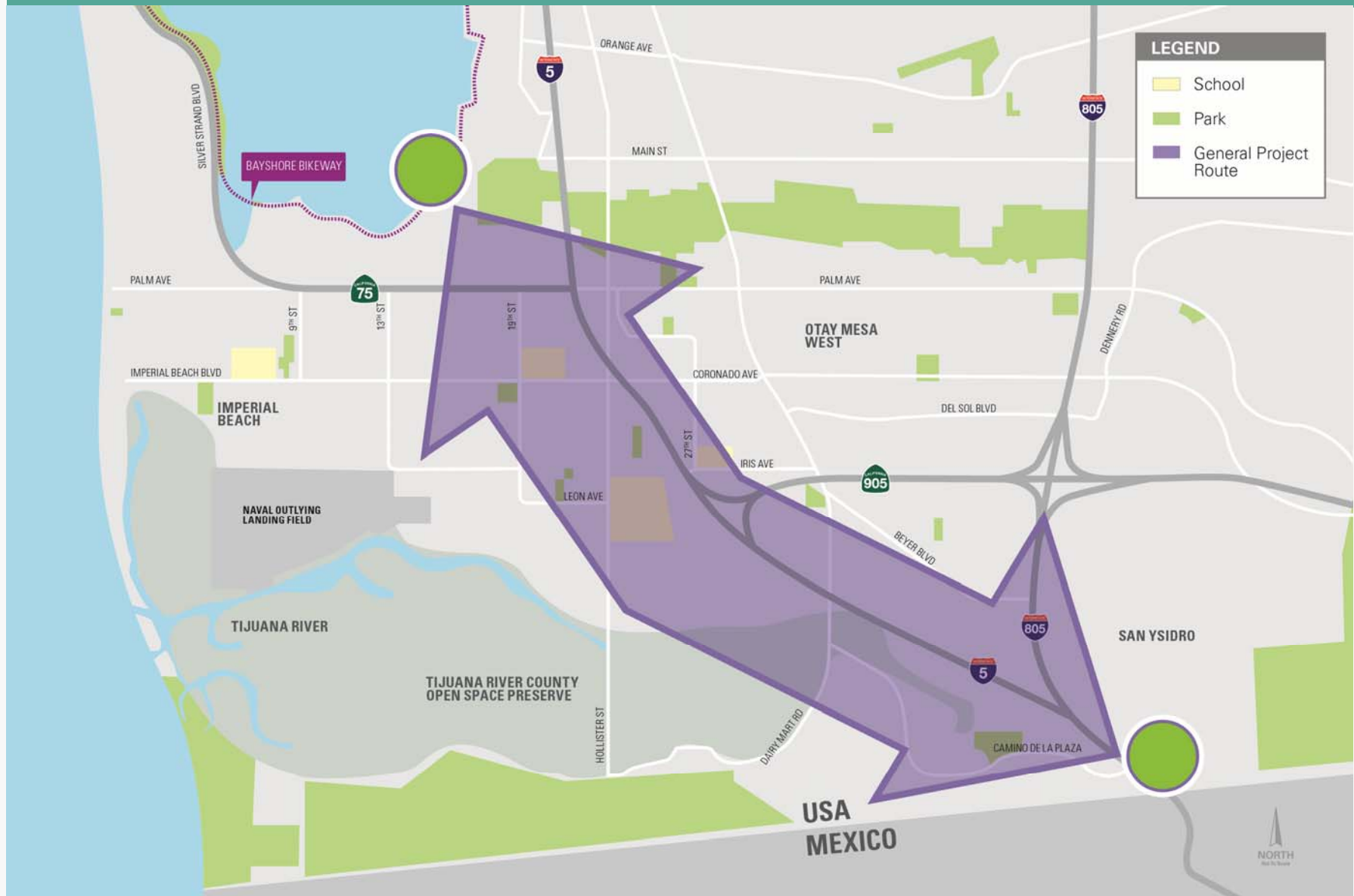
# Ranking of High Priority Proposed Project

Existing Facility	Proposed Facility
— Class I	— Class I
— Class II	— Class II
— Class III	— Class III
— Freeway Shoulder	— Cycle Track
	— Bicycle Boulevard
	— Class II or III





# BORDER TO BAYSHORE BIKEWAY PROJECT AREA





# BORDER TO BAYSHORE BIKEWAY EXISTING CONDITIONS





# BORDER TO BAYSHORE BIKEWAY EXISTING CONDITIONS







# BORDER TO BAYSHORE BIKEWAY EXISTING CONDITIONS



# BORDER TO BAYSHORE BIKEWAY EXISTING CONDITIONS



# BORDER TO BAYSHORE BIKEWAY EXISTING CONDITIONS





# BORDER TO BAYSHORE BIKEWAY EXISTING CONDITIONS





# BORDER TO BAYSHORE BIKEWAY EXISTING CONDITIONS





# PROJECT OUTREACH TIMELINE

("How YOU can get involved!")



## BORDER TO BAYSHORE BIKEWAY

PROJECT PHASES AND OPPORTUNITIES TO GET INVOLVED

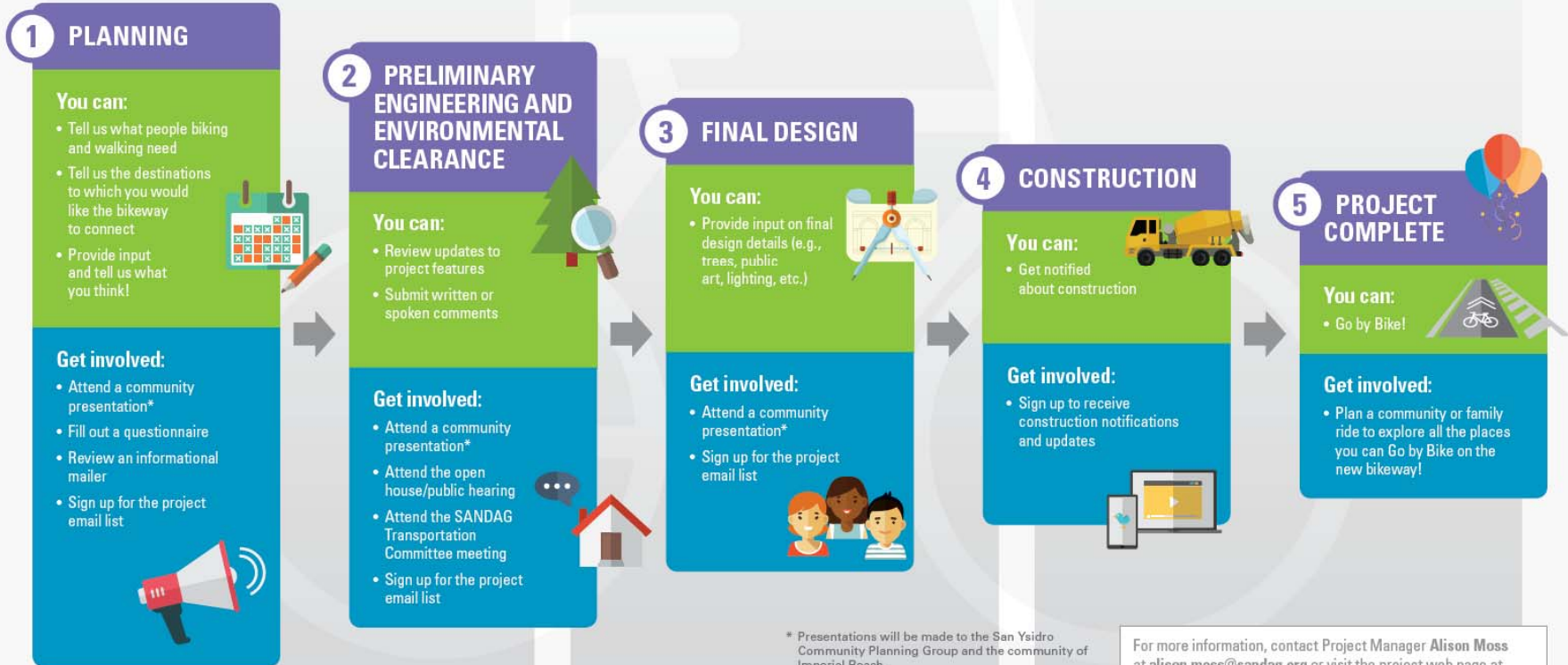
**LEGEND**

- PROJECT MILESTONES
- WHAT YOU CAN DO
- OPPORTUNITIES TO GET INVOLVED

2017

2018-2019

2020-2021



\* Presentations will be made to the San Ysidro Community Planning Group and the community of Imperial Beach. Agendas and meeting dates can be found online at: [sandiego.gov/planning/community/contacts](http://sandiego.gov/planning/community/contacts)

For more information, contact Project Manager Alison Moss at [alison.moss@sandag.org](mailto:alison.moss@sandag.org) or visit the project web page at [KeepSanDiegoMoving.com/BordertoBayshore](http://KeepSanDiegoMoving.com/BordertoBayshore)

ENGLISH



# PROJECT OUTREACH TIMELINE

("How YOU can get involved!")



## BORDER TO BAYSHORE BIKEWAY

### FASES DEL PROYECTO Y OPORTUNIDADES PARA INVOLUCRARSE

**LEYENDA**

- HITOS DEL PROYECTO
- LO QUE PUEDE HACER
- OPORTUNIDADES PARA INVOLUCRARSE

2017

2018-2019

2020-2021



HISTORIAS



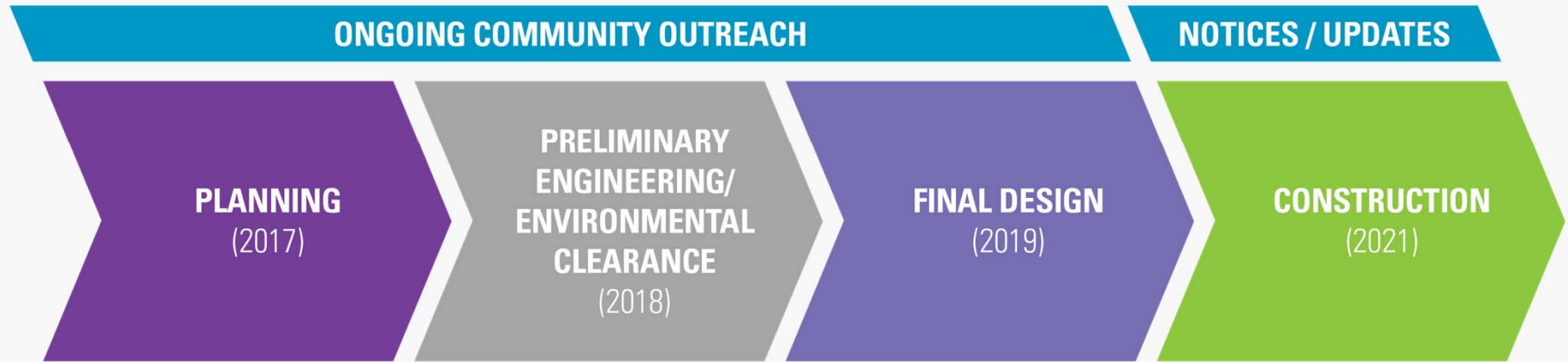
[KeepSanDiegoMoving.com/BordertoBayshore](http://KeepSanDiegoMoving.com/BordertoBayshore)

Abril 2017





# TENTATIVE PROJECT TIMELINE







## QUESTIONS?

Alison Moss  
Project Manager  
San Diego Association of Governments  
(619) 595-5354 / [alison.moss@sandag.org](mailto:alison.moss@sandag.org)

*[KeepSanDiegoMoving.com/GObyBIKE](http://KeepSanDiegoMoving.com/GObyBIKE)*