



# MONROE BIKEWAY NORTH PARK | MID-CITY BIKEWAYS

JUNE 28, 2016  
TALMADGE MAINTENANCE ASSESSMENT  
DISTRICT



# OUTLINE

- I. **North Park | Mid-City Bikeways project overview**
- II. Monroe Bikeway design features
- III. Monroe Bikeway proposed improvements
  - I. West Talmadge (44<sup>th</sup> to Menlo)
  - II. East Talmadge (48<sup>th</sup> to Collwood)
  - III. Central Talmadge (Aldine to Euclid)

SANDAG Project Manager

Danny Veeh

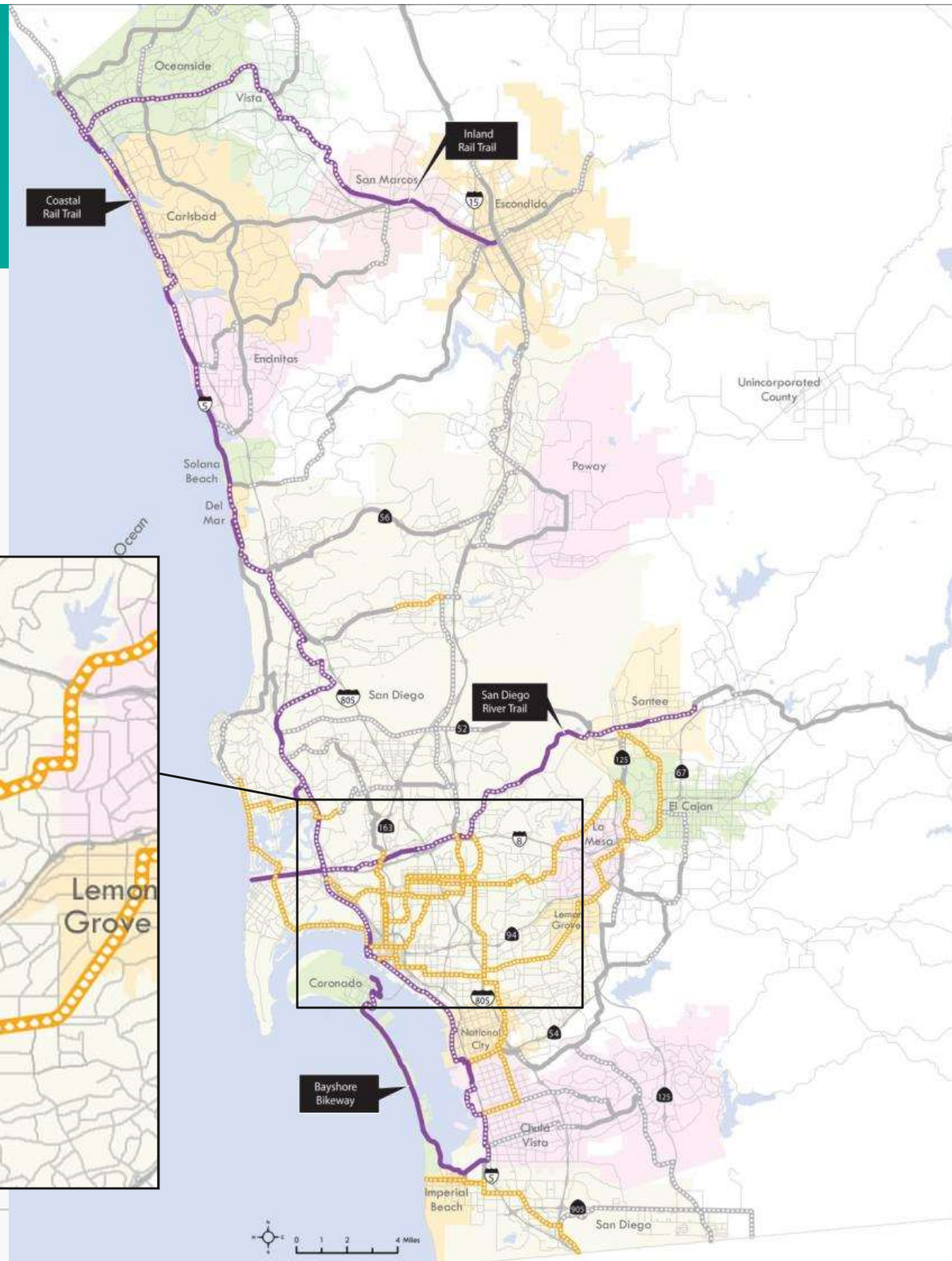
(619) 699-7317

Danny.Veeh@sandag.org



# REGIONAL NETWORK

## HIGH PRIORITY BIKE PROJECTS





# EVERYDAY PEOPLE, EVERYDAY TRIPS

No way

Interested,  
but concerned

*(potential bikeway users)*

Anywhere, anytime





# PROJECT GOALS

## **SAFETY**

*Provide safe, livable, complete streets that serve people of all ages and abilities*

## **ACCESS**

*Provide direct access to schools, transit, community destinations, and commercial centers*

## **EXPERIENCE**

*Design innovative facilities with appropriate separation from vehicular traffic, traffic calming elements, and end-of-trip facilities*

## **COMMUNITY**

*Be consistent with and leverage community planning efforts*

## **PLACEMAKING AND SUSTAINABILITY**

*Support placemaking, sustainability, equity, and economic development and redevelopment efforts*





# NORTH PARK | MID-CITY BIKEWAYS



**LEGEND**

|                                  |                              |
|----------------------------------|------------------------------|
| Proposed Georgia – Meade Bikeway | Proposed Robinson Bikeway    |
| Proposed Monroe Bikeway          | Proposed Landis Bikeway      |
| Proposed Howard – Orange Bikeway | Regional Bikeway Connections |
| Proposed University Bikeway      |                              |





# NORTH PARK | MID-CITY BIKEWAYS

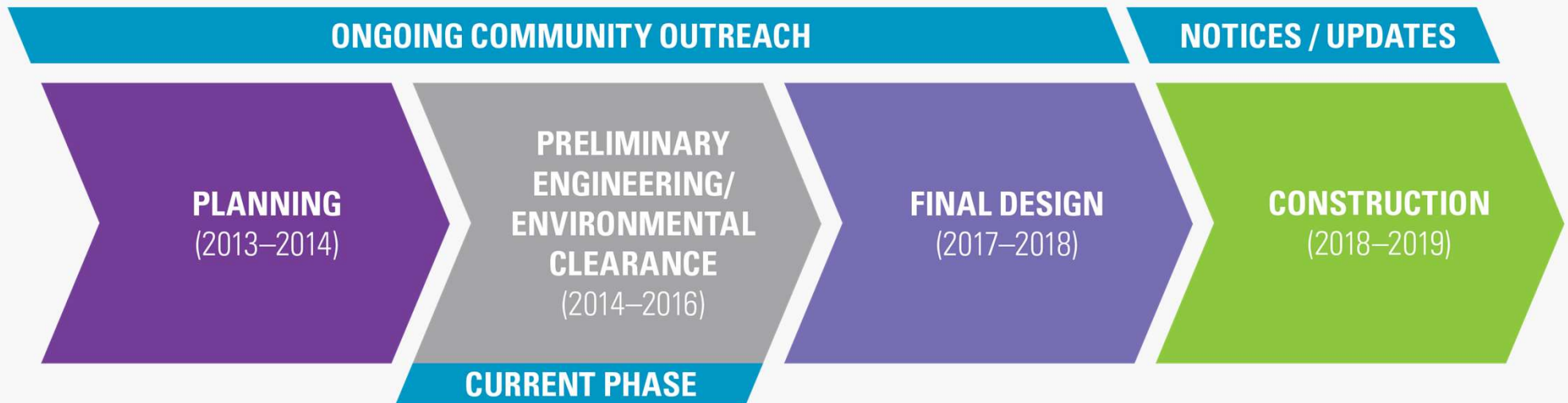
## GENERAL OVERVIEW

- 13 miles across six bikeways
- 157,000 residents within ½ mile (five percent of region)
- Fully funded through construction
- SANDAG funds, designs, and constructs
- City of San Diego approves and maintains



# MONROE BIKEWAY

## PROCESS



### NPMC Ongoing Community Outreach

- 82 Stakeholder Meetings
- 22 Agency Meetings
- 7 Community Open House Meetings





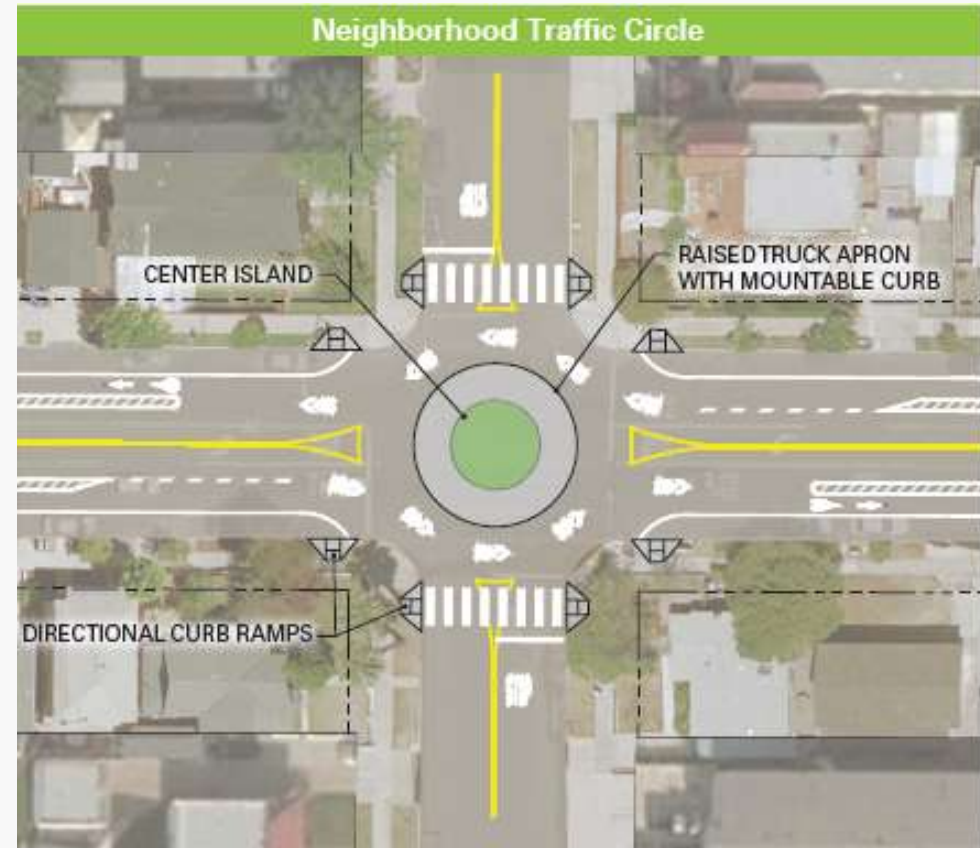
# OUTLINE

- I. North Park | Mid-City Bikeways project overview
- II. Monroe Bikeway design features**
- III. Monroe Bikeway proposed improvements
  - I. West Talmadge (44<sup>th</sup> to Menlo)
  - II. East Talmadge (48<sup>th</sup> to Collwood)
  - III. Central Talmadge (Aldine to Euclid)



# BIKEWAY FEATURES

## NEIGHBORHOOD TRAFFIC CIRCLE

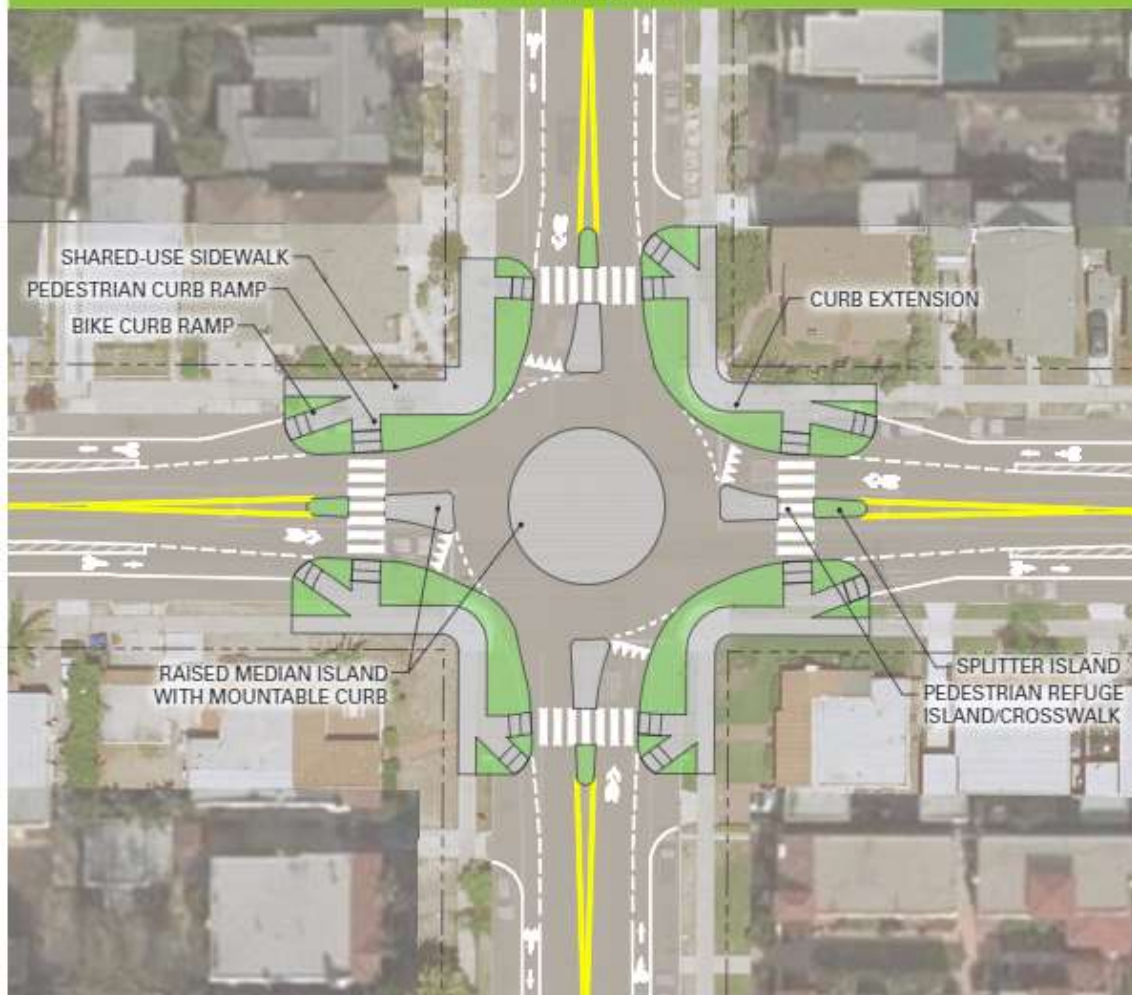




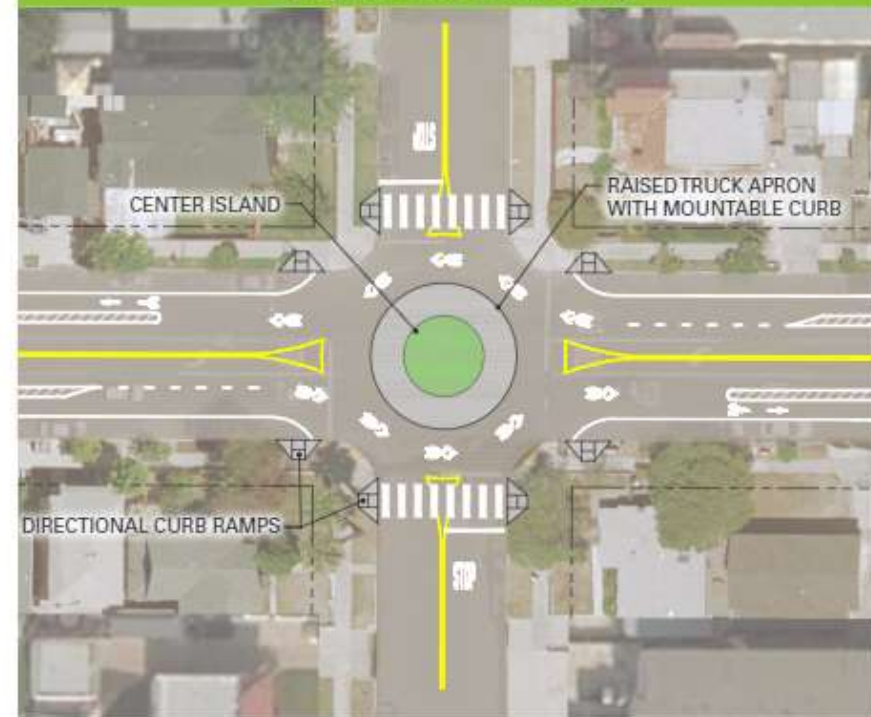
# BIKEWAY FEATURES

## MINI-ROUNDAABOUT

Mini-Roundabout



Neighborhood Traffic Circle





# BIKEWAY FEATURES

## BUFFERED BIKE LANES



4<sup>th</sup> Ave., Bankers Hill



# BIKEWAY FEATURES

## CURB EXTENSION



25<sup>th</sup> and Broadway, Golden Hill



# BIKEWAY FEATURES

## RAISED CROSSWALK



Gardendale Rd., Encinitas



# BIKEWAY FEATURES

## TWO STAGE TURN BOX



18<sup>th</sup> St., National City



# OUTLINE

- I. North Park | Mid-City Bikeways project overview
- II. Monroe Bikeway design features
- III. Monroe Bikeway proposed improvements**
  - I. West Talmadge (44<sup>th</sup> to Menlo)
  - II. East Talmadge (48<sup>th</sup> to Collwood)
  - III. Central Talmadge (Aldine to Euclid)





# MONROE BIKEWAY TALMADGE IMPROVEMENTS

## PROPOSED IMPROVEMENTS

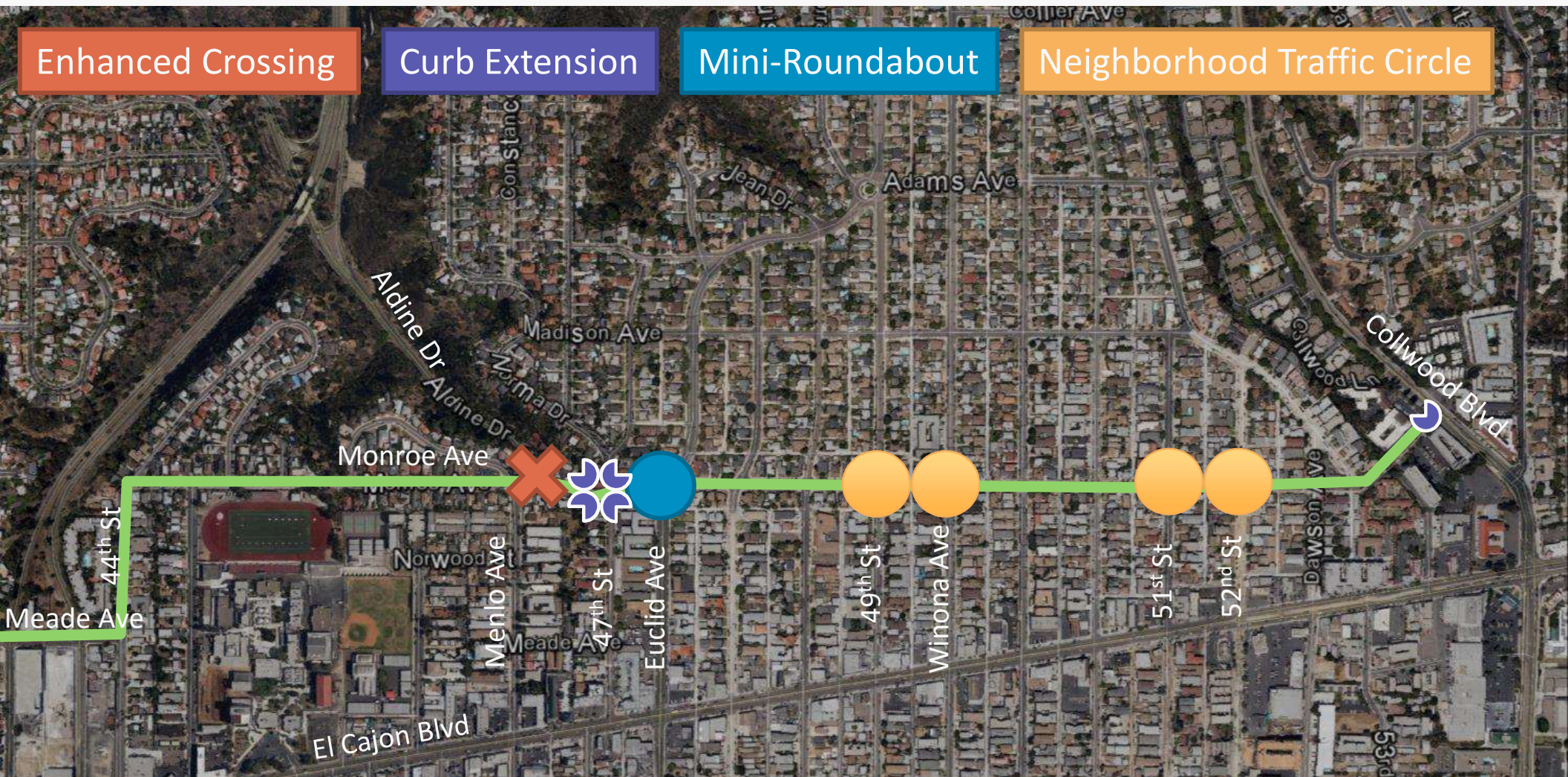
DRAFT

Enhanced Crossing

Curb Extension

Mini-Roundabout

Neighborhood Traffic Circle

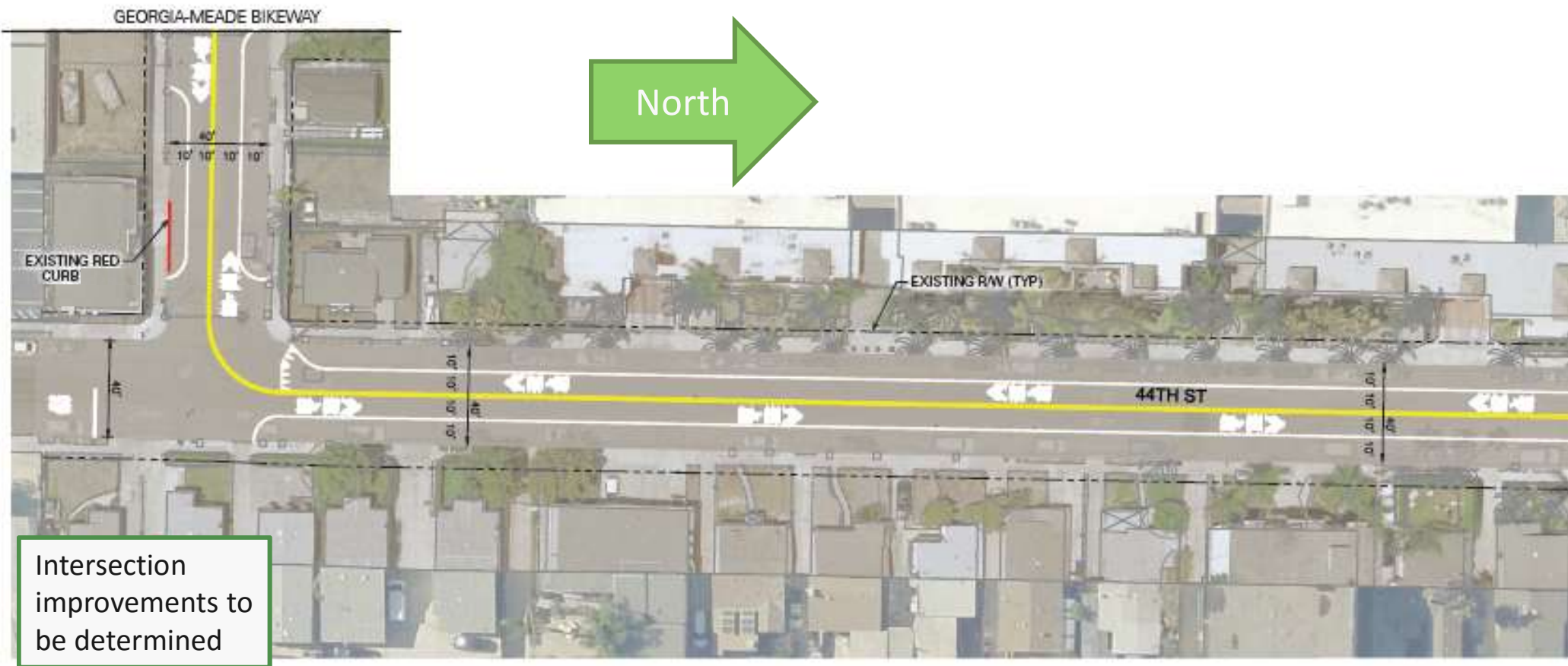




# MONROE BIKEWAY WEST TALMADGE IMPROVEMENTS

## 44<sup>TH</sup> STREET / MEADE AVENUE

DRAFT

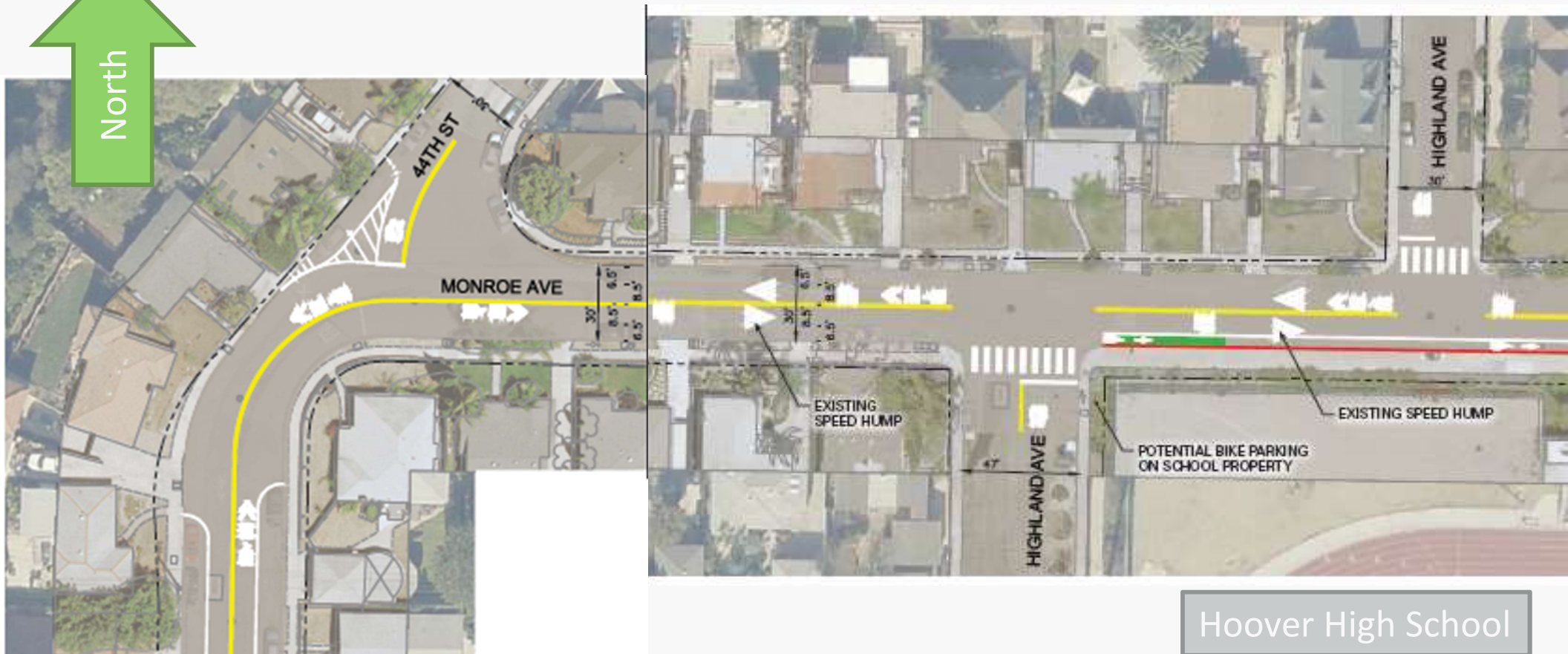




# MONROE BIKEWAY WEST TALMADGE IMPROVEMENTS

## 44<sup>TH</sup> STREET / MONROE AVENUE / HIGHLAND AVENUE

DRAFT



Hoover High School



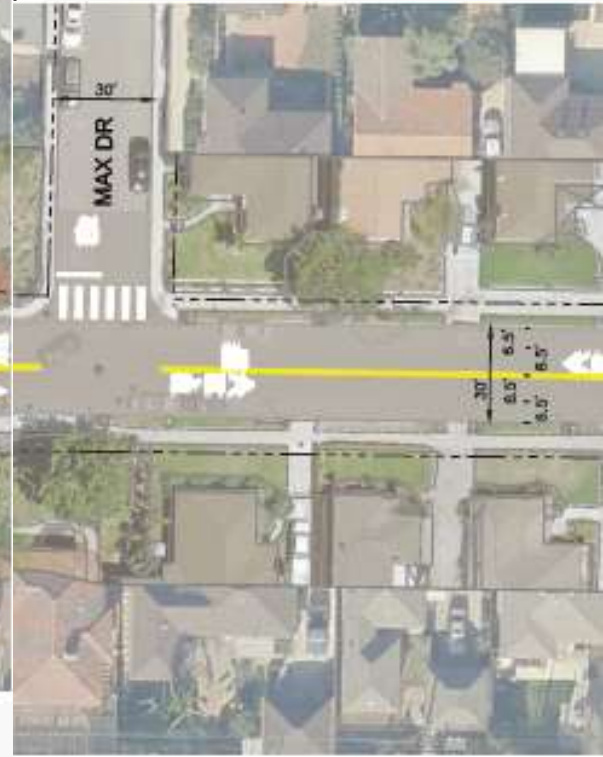
# MONROE BIKEWAY WEST TALMADGE IMPROVEMENTS

## 45<sup>TH</sup> STREET / MAX DRIVE

DRAFT



Hoover High School

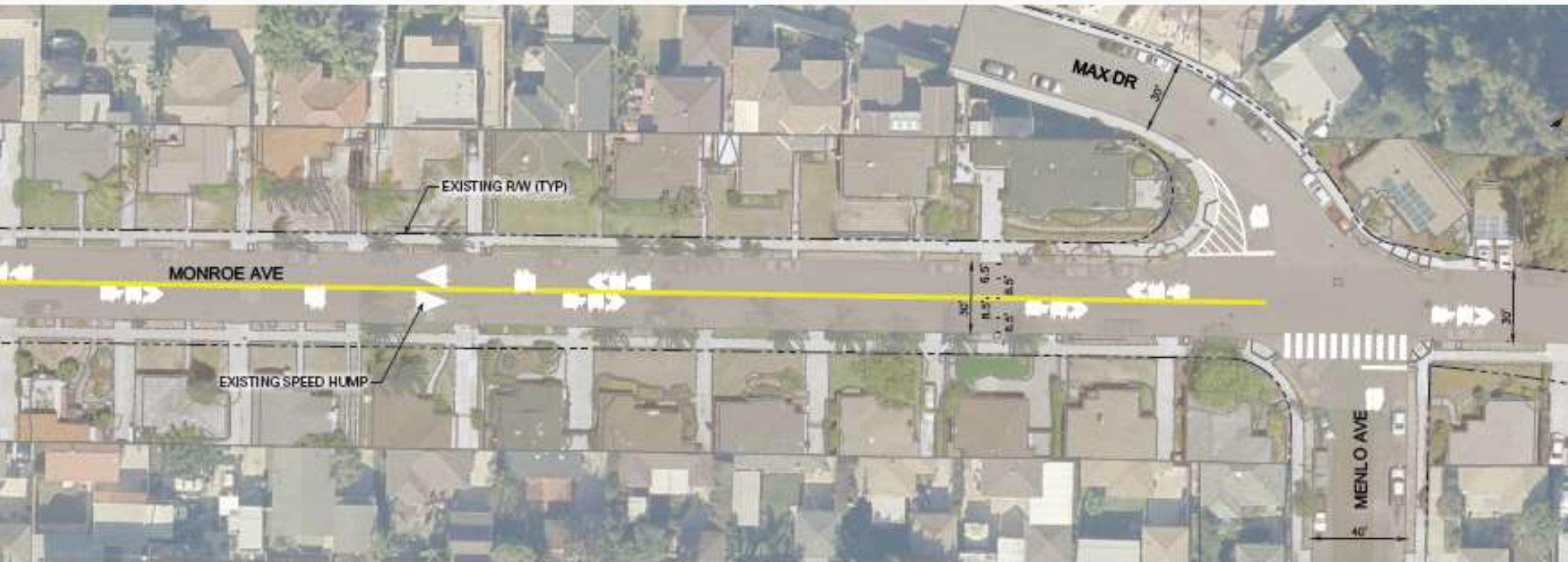




# MONROE BIKEWAY WEST TALMADGE IMPROVEMENTS

## MAX DRIVE / MENLO AVENUE

DRAFT





# MONROE BIKEWAY

## EAST TALMADGE





# MONROE BIKEWAY EAST TALMADGE IMPROVEMENTS

48<sup>TH</sup> STREET / ESTRELLA AVE

DRAFT





# MONROE BIKEWAY EAST TALMADGE IMPROVEMENTS

## 49<sup>TH</sup> STREET / WINONA AVE

DRAFT







# MONROE BIKEWAY EAST TALMADGE IMPROVEMENTS

50<sup>TH</sup> STREET / ALTADENA AVE

DRAFT





# MONROE BIKEWAY EAST TALMADGE IMPROVEMENTS

51<sup>ST</sup> STREET / 52<sup>ND</sup> STREET

DRAFT

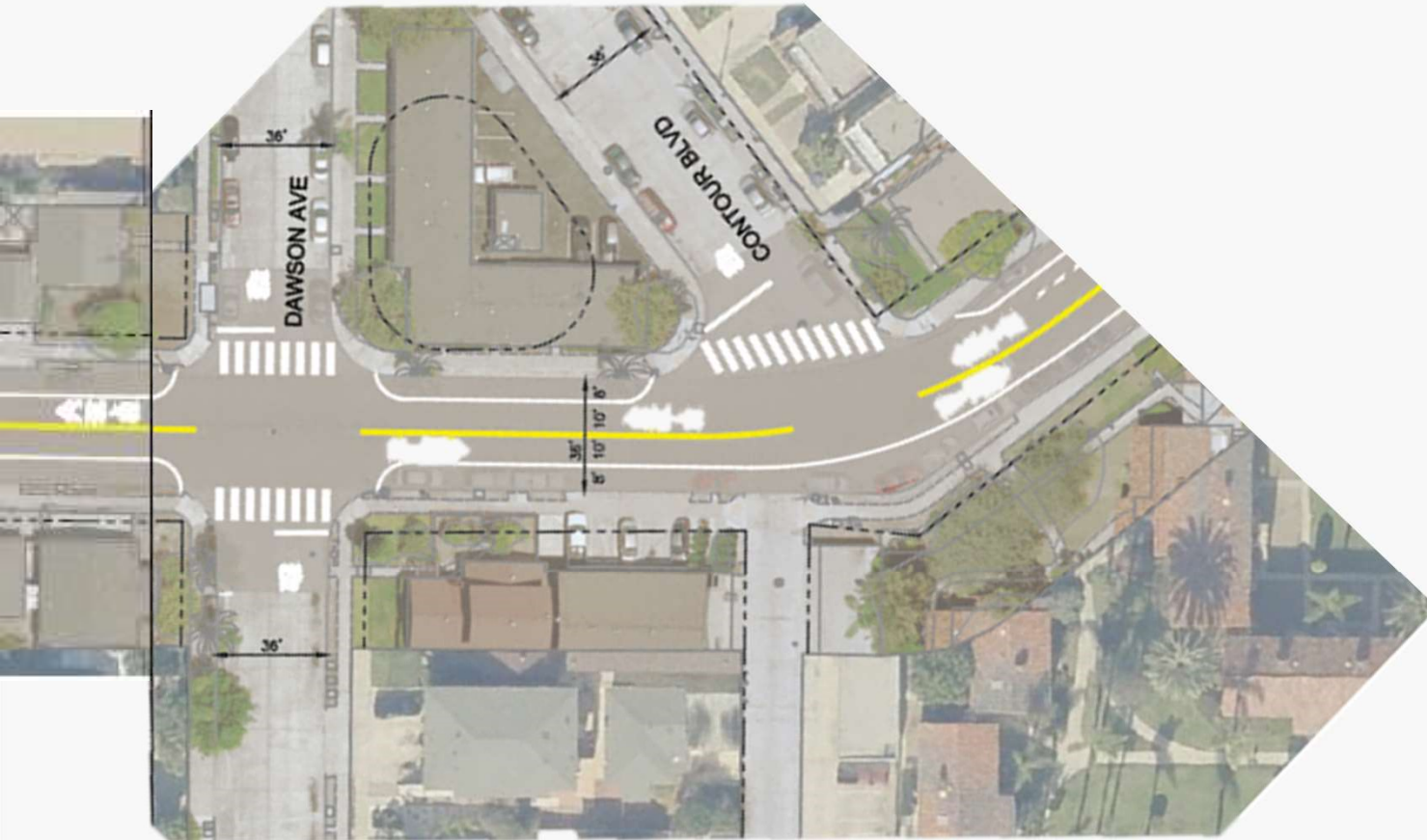




# MONROE BIKEWAY EAST TALMADGE IMPROVEMENTS

## DAWSON AVENUE / CONTOUR BOULEVARD

DRAFT

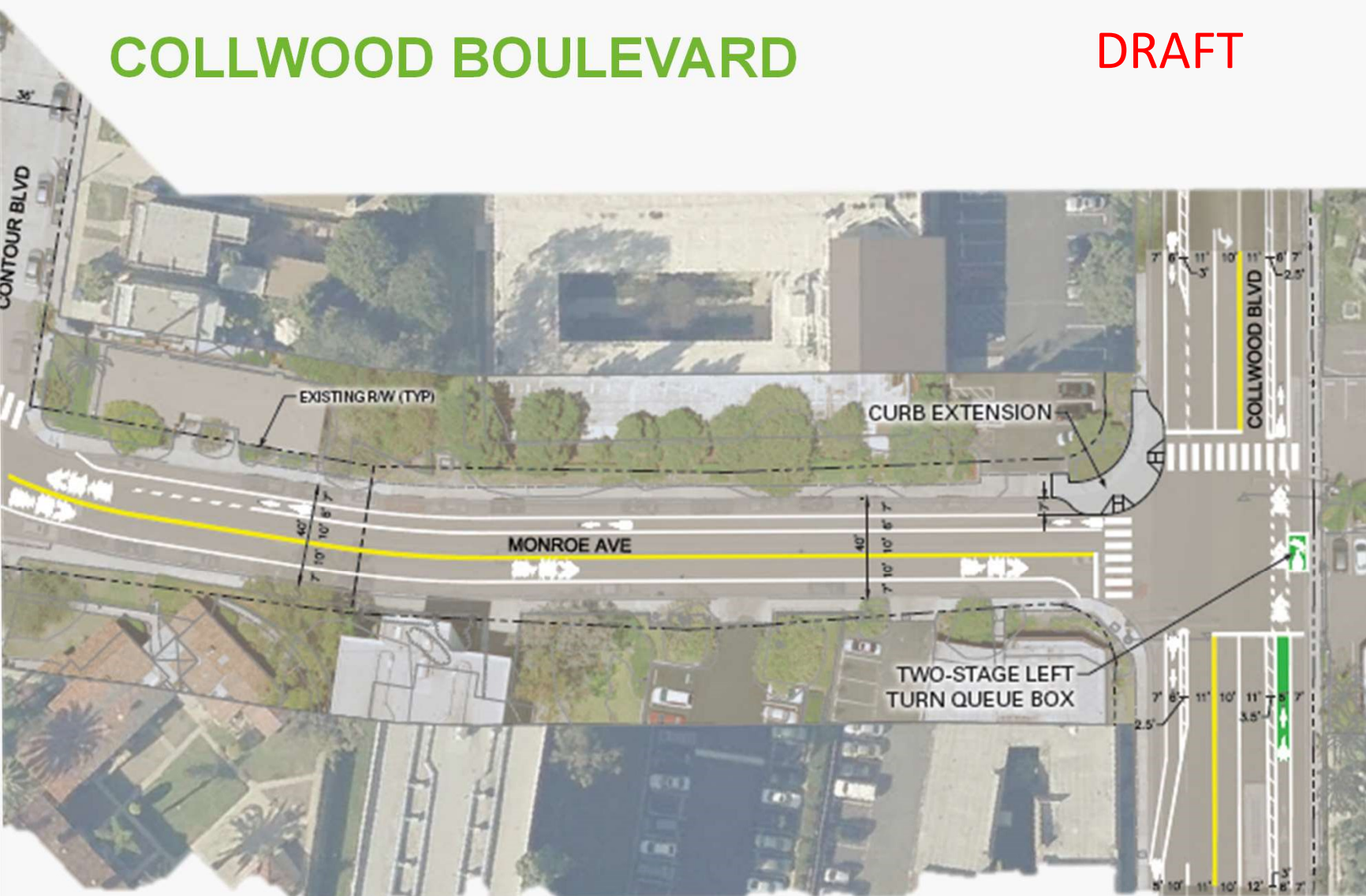




# MONROE BIKEWAY EAST TALMADGE IMPROVEMENTS

## COLLWOOD BOULEVARD

DRAFT





# MONROE BIKEWAY

## CENTRAL TALMADGE

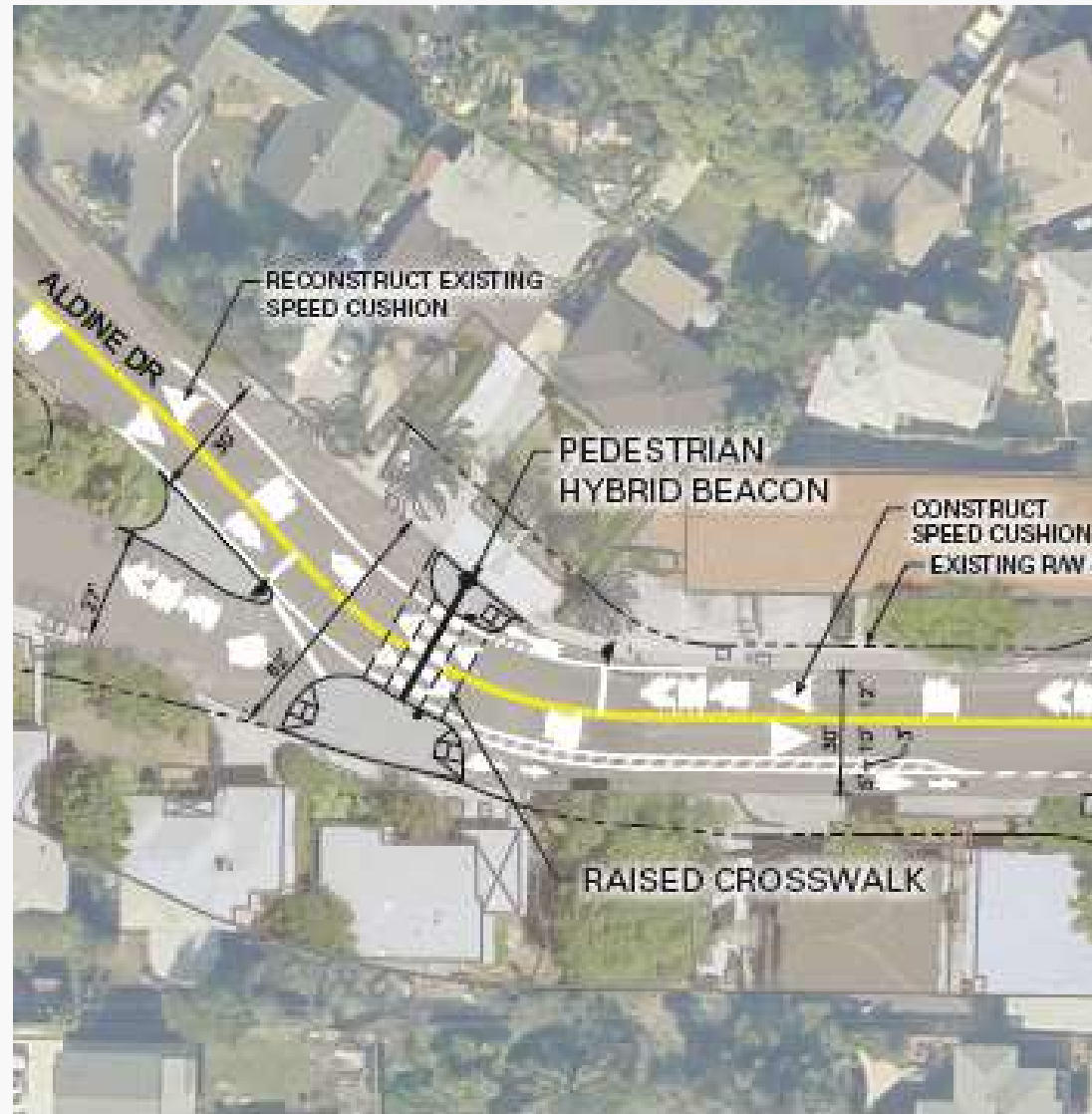




# MONROE BIKEWAY CENTRAL TALMADGE IMPROVEMENTS

## ALDINE DRIVE

DRAFT





# BIKEWAY FEATURE

## PEDESTRIAN HYBRID BEACON

DRAFT

AKA: HAWK (High-Intensity Activated Crosswalk beacon)



Mission Center Rd., San Diego

|  |   |                                  |
|--|---|----------------------------------|
|  |   |                                  |
| 1. Dark until activated                        | 2. Flashing yellow light for 3–6 s                                      | 3. Steady yellow light for 3–6 s |
|  |   |                                  |
| 4. Steady red light during pedestrian interval | 5. Alternating flashing red lights during pedestrian clearance interval |                                  |



# MONROE BIKEWAY CENTRAL TALMADGE IMPROVEMENTS

## 47<sup>TH</sup> STREET

DRAFT







# MONROE BIKEWAY CENTRAL TALMADGE IMPROVEMENTS

## EUCLID AVENUE

DRAFT





# MONROE BIKEWAY CENTRAL TALMADGE IMPROVEMENTS

**VISUAL SIMULATION**

**DRAFT**





# MONROE BIKEWAY CENTRAL TALMADGE IMPROVEMENTS

ALDINE DRIVE / 47<sup>TH</sup> STREET / EUCLID AVENUE **DRAFT**





# MONROE BIKEWAY

## AESTHETICS

DRAFT

### Lithomosaic

Dana Headlands - Dana Point, CA



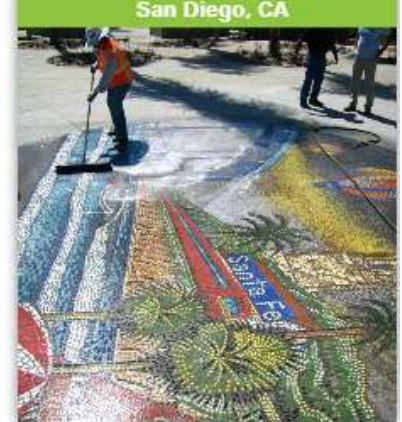
Pioneer Modernism Park - Lemon Grove, CA



AquaLink Station - Long Beach, CA



North Island Credit Union - San Diego, CA



### Colored/Stamped Concrete

25th and B - San Diego, CA





# MONROE BIKEWAY

## AESTHETICS

DRAFT

National City, CA



Montgomery Ave - Encinitas, CA



Kimball Park - National City, CA



Bird Park - San Diego, CA



Bird Rock - La Jolla, CA



Ward Canyon Park - San Diego, CA



Helena, MT



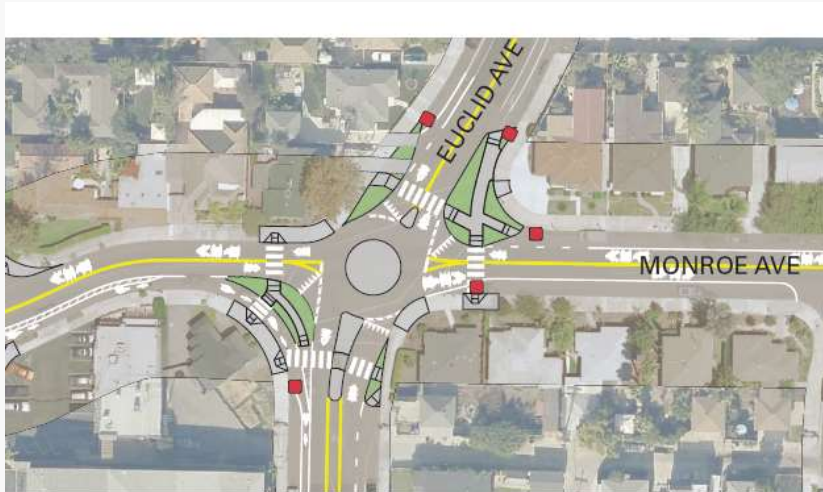
Carlsbad, CA





# PARKING ASSESSMENT

DRAFT



## Key:

- Spaces replaced by improvements and within the 20' no parking zone recommended by CA MUTCD
- Spaces replaced by improvements beyond the 20' no parking zone



NORTH



# COMMUNITY MEETING

- Date
  - TBD (Fall 2016)
- Location
  - TBD near Talmadge
- Outreach
  - Post cards or door hangers to residents/owners
  - Email, Website, Social Media, Community Calendars, Advertisements
  - Community Planning Groups





# SR 15 | CENTRAL AVENUE BIKEWAY

## PROJECT OVERVIEW

- 1.2 mile bikeway parallel to SR 15 between Adams Avenue and Landis Street
- Provides safe connections to destinations in Kensington and City Heights
- Public outreach begins this summer
- Neighborhood meetings are being scheduled







# MONROE BIKEWAY

## WE WANT YOUR FEEDBACK

- Comments
  - [Danny.Veeh@sandag.org](mailto:Danny.Veeh@sandag.org) / (619) 699-7317
- Stay connected
  - [KeepSanDiegoMoving.com/NorthParkMidCityBikeways](http://KeepSanDiegoMoving.com/NorthParkMidCityBikeways)
  - **Sign up to receive email newsletters**