



NORTH PARK | MID-CITY BIKEWAYS MONROE BIKEWAY

JUNE 27, 2017

TALMADGE MAINTENANCE ASSESSMENT
DISTRICT



OUTLINE

- I. Monroe Bikeway Project Overview
- II. Pedestrian Hybrid Beacon
- III. Mini-Roundabout

SANDAG Project Manager

Danny Veeh

(619) 699-7317

Danny.Veeh@sandag.org



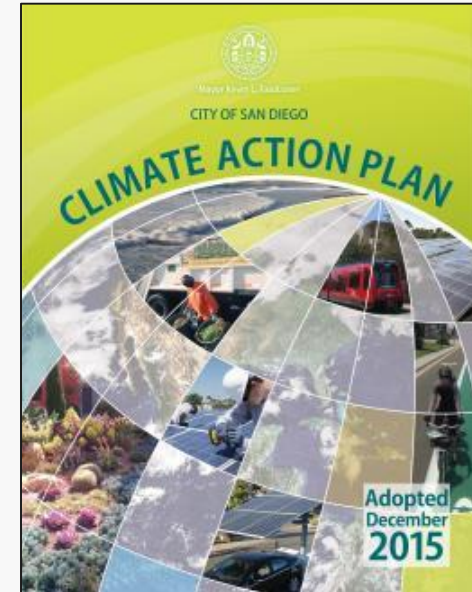
NORTH PARK | MID-CITY BIKEWAYS

POLICY SUPPORT

- Climate Action Plan
- Vision Zero

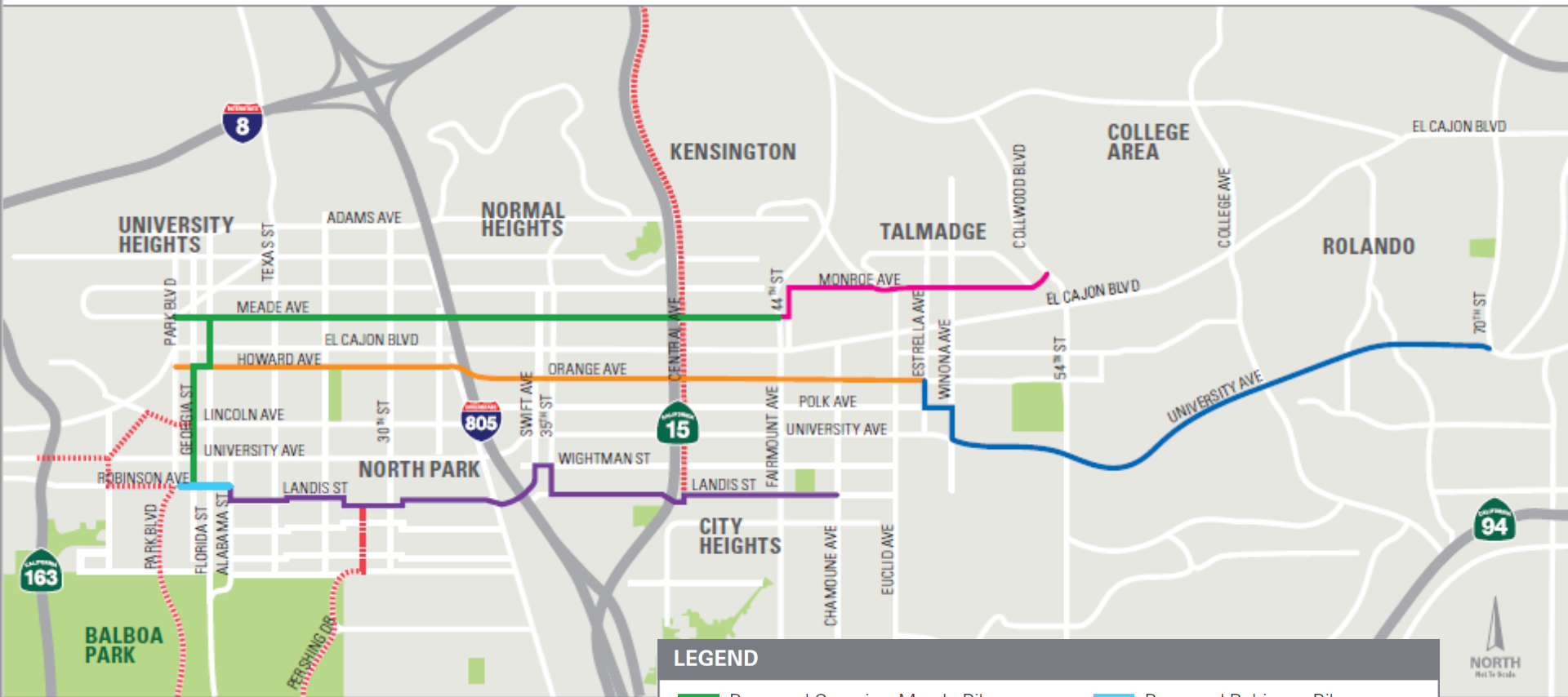
TARGET:

Achieve 6% bicycle commuter mode share by 2020 and 18% mode share by 2035 in Transit Priority Areas.





NORTH PARK | MID-CITY BIKEWAYS



LEGEND

- Proposed Georgia – Meade Bikeway
- Proposed Monroe Bikeway
- Proposed Howard – Orange Bikeway
- Proposed University Bikeway
- Proposed Robinson Bikeway
- Proposed Landis Bikeway
- Regional Bikeway Connections



NORTH PARK | MID-CITY BIKEWAYS

GENERAL OVERVIEW

- 13 miles across six bikeways
- 157,000 residents within ½ mile (five percent of region)
- Fully funded through construction
- SANDAG funds, designs, and constructs
- City of San Diego approves and maintains

NPMC Ongoing Community Outreach

- 91 Stakeholder Meetings
- 35 Agency Meetings
- 7 Community Open House Meetings



MONROE BIKEWAY TALMADGE IMPROVEMENTS

PROPOSED IMPROVEMENTS

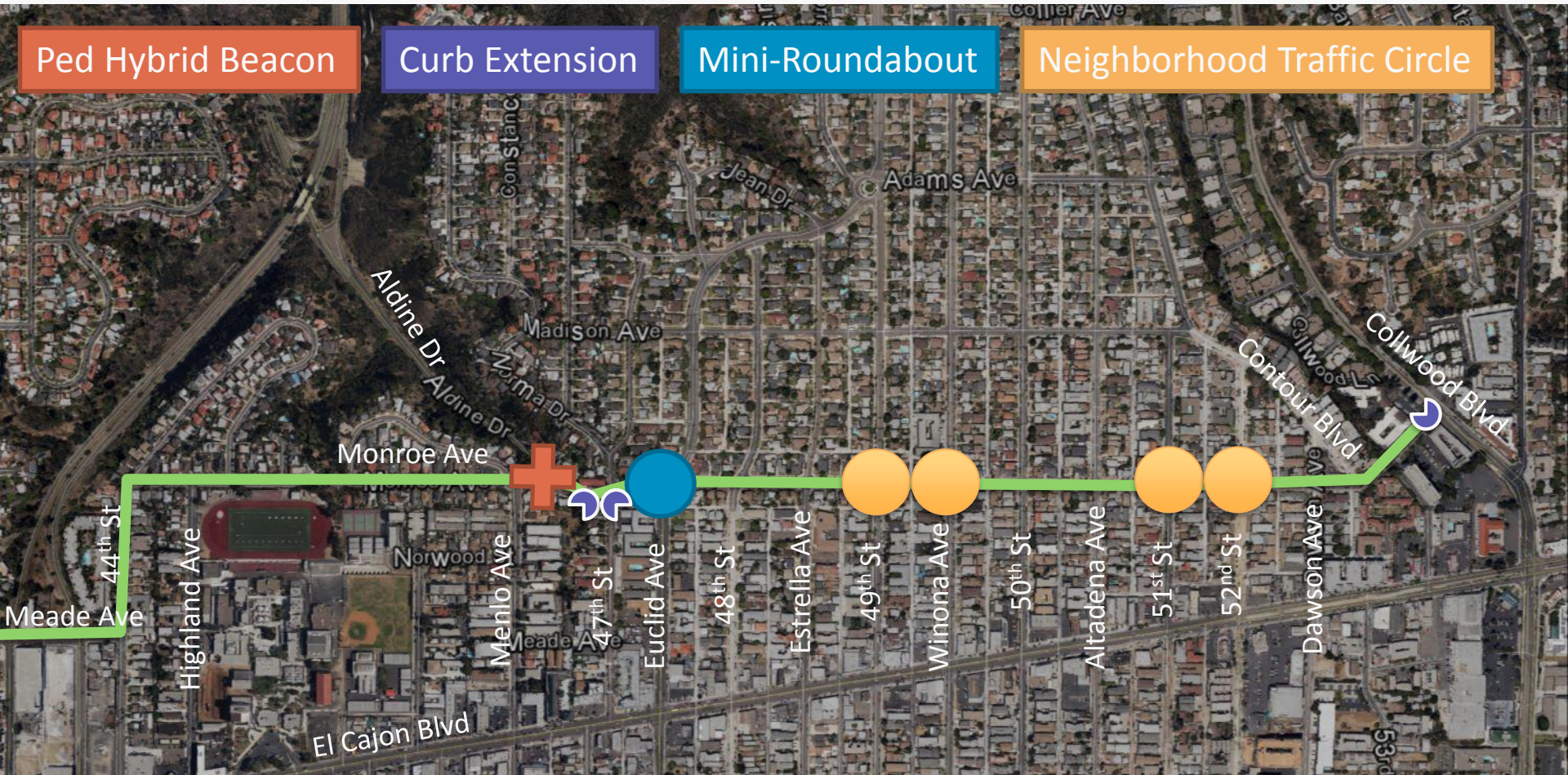
DRAFT

Ped Hybrid Beacon

Curb Extension

Mini-Roundabout

Neighborhood Traffic Circle





MONROE BIKEWAY

ALDINE DRIVE / 47TH STREET / EUCLID AVENUE **DRAFT**

June 2016

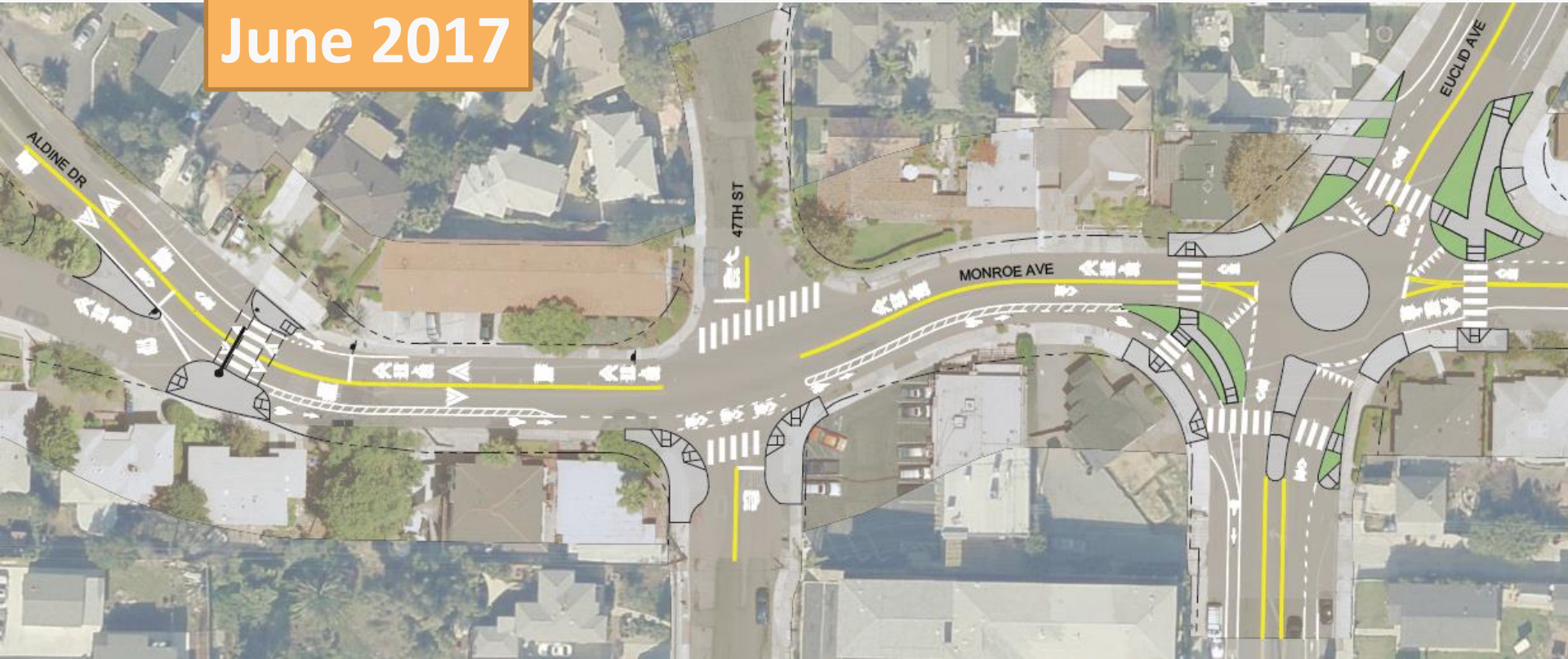




MONROE BIKEWAY

ALDINE DRIVE / 47TH STREET / EUCLID AVENUE **DRAFT**

June 2017





PEDESTRIAN HYBRID BEACON

MONROE AVENUE & ALDINE DRIVE



PEDESTRIAN HYBRID BEACON (PHB)

AKA: HAWK (High-Intensity Activated Crosswalk beacon)

1. Dark until activated	2. Flashing yellow light for 3–6 s	3. Steady yellow light for 3–6 s
4. Steady red light during pedestrian interval	5. Alternating flashing red lights during pedestrian clearance interval	





PEDESTRIAN HYBRID BEACON (PHB)

PHB SIGNAL (C STREET)



Mission Center Rd., San Diego



PEDESTRIAN HYBRID BEACON (PHB)

VISUAL SIMULATION





PEDESTRIAN HYBRID BEACON (PHB)

VISUAL SIMULATION





PEDESTRIAN HYBRID BEACON (PHB)

PHB SIGNAL TIMING (IN SECONDS)

PHB Phase	Mission Center Road (Observed) 6 lanes - 103'	C Street (Observed) 3 lanes - 51'	Monroe/Aldine (Estimate) 2 lanes – 23'
Flashing Yellow	5	5	3
Steady Yellow	4	4	3
Steady Red	10	9	6
Alternating Red	30	15	9
Dark (Minimum)	25-36	22-30	TBD



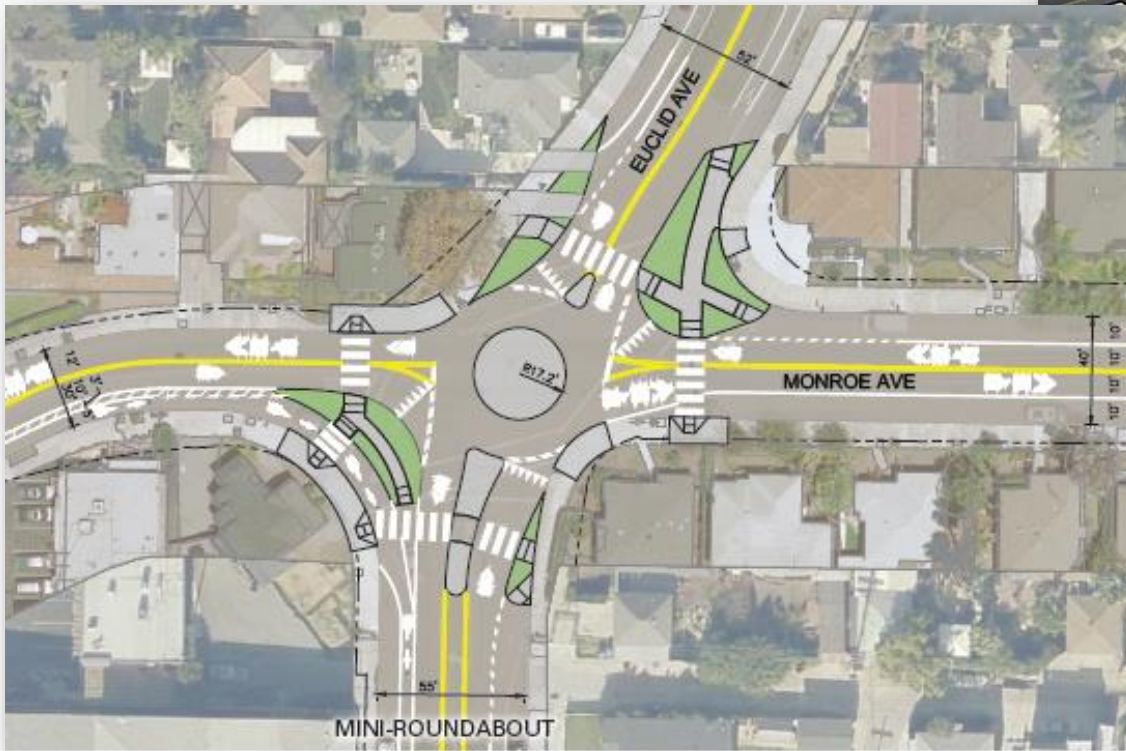
MINI-ROUNDAABOUT

EUCLID AVENUE & MONROE AVENUE



MONROE BIKEWAY

EUCLID AVENUE AND MONROE AVENUE



DRAFT



MONROE BIKEWAY

EUCLID AVENUE AND MONROE AVENUE

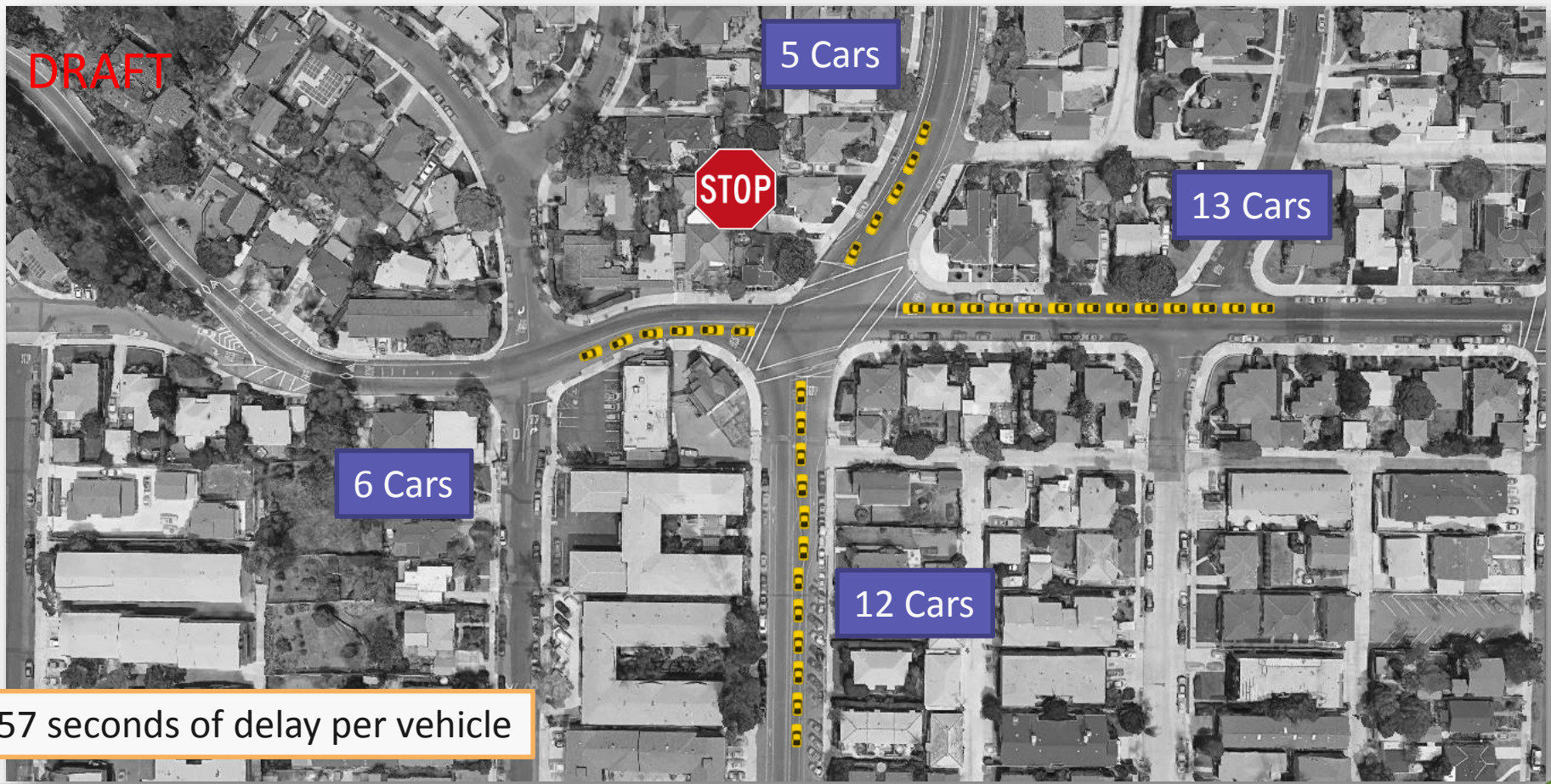


DRAFT



EUCLID AVENUE AND MONROE AVENUE 2020 AVERAGE QUEUE LENGTH

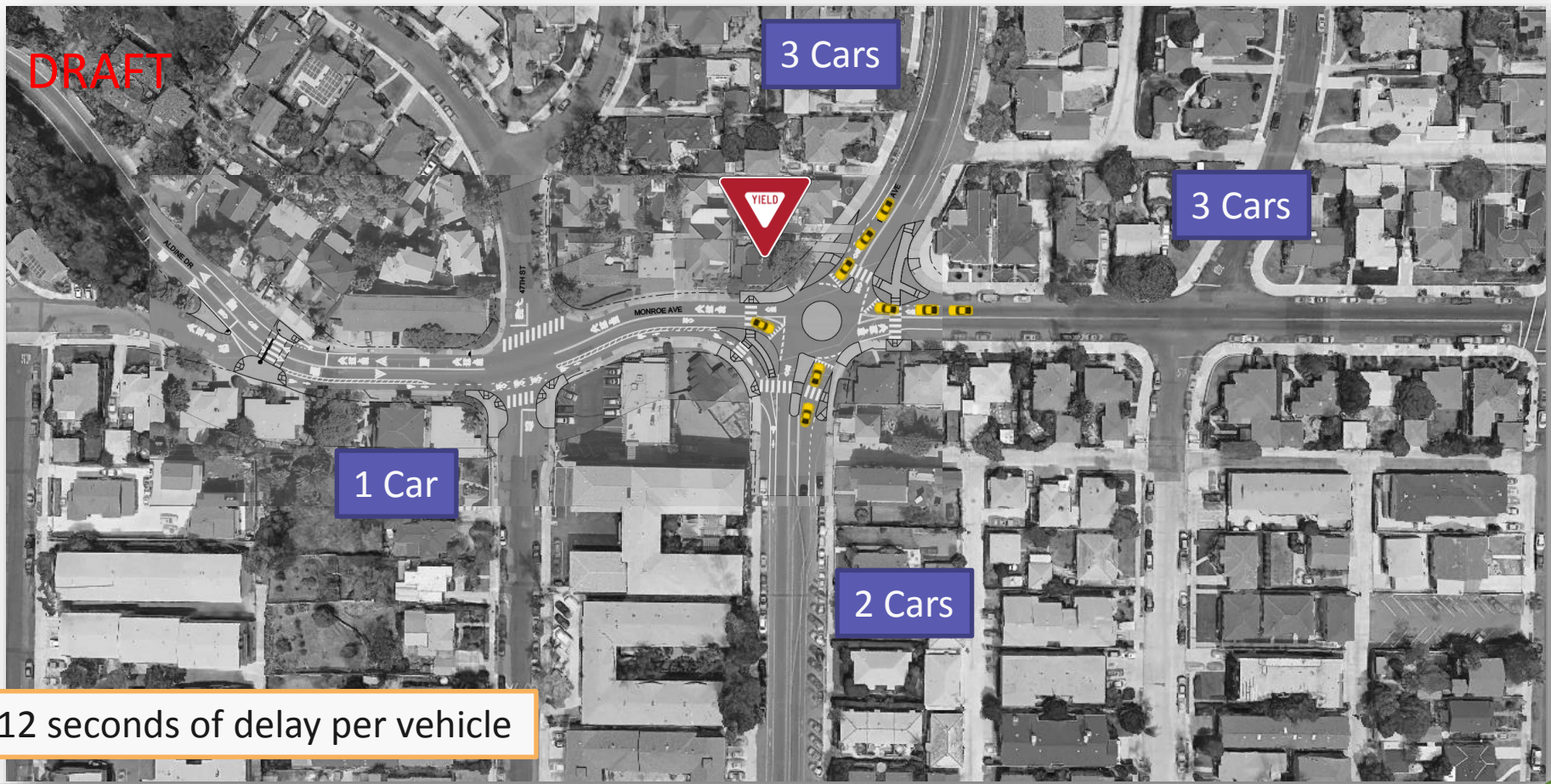
AM PEAK HOUR WITHOUT PROJECT: 4-WAY STOP





EUCLID AVENUE AND MONROE AVENUE 2020 AVERAGE QUEUE LENGTH

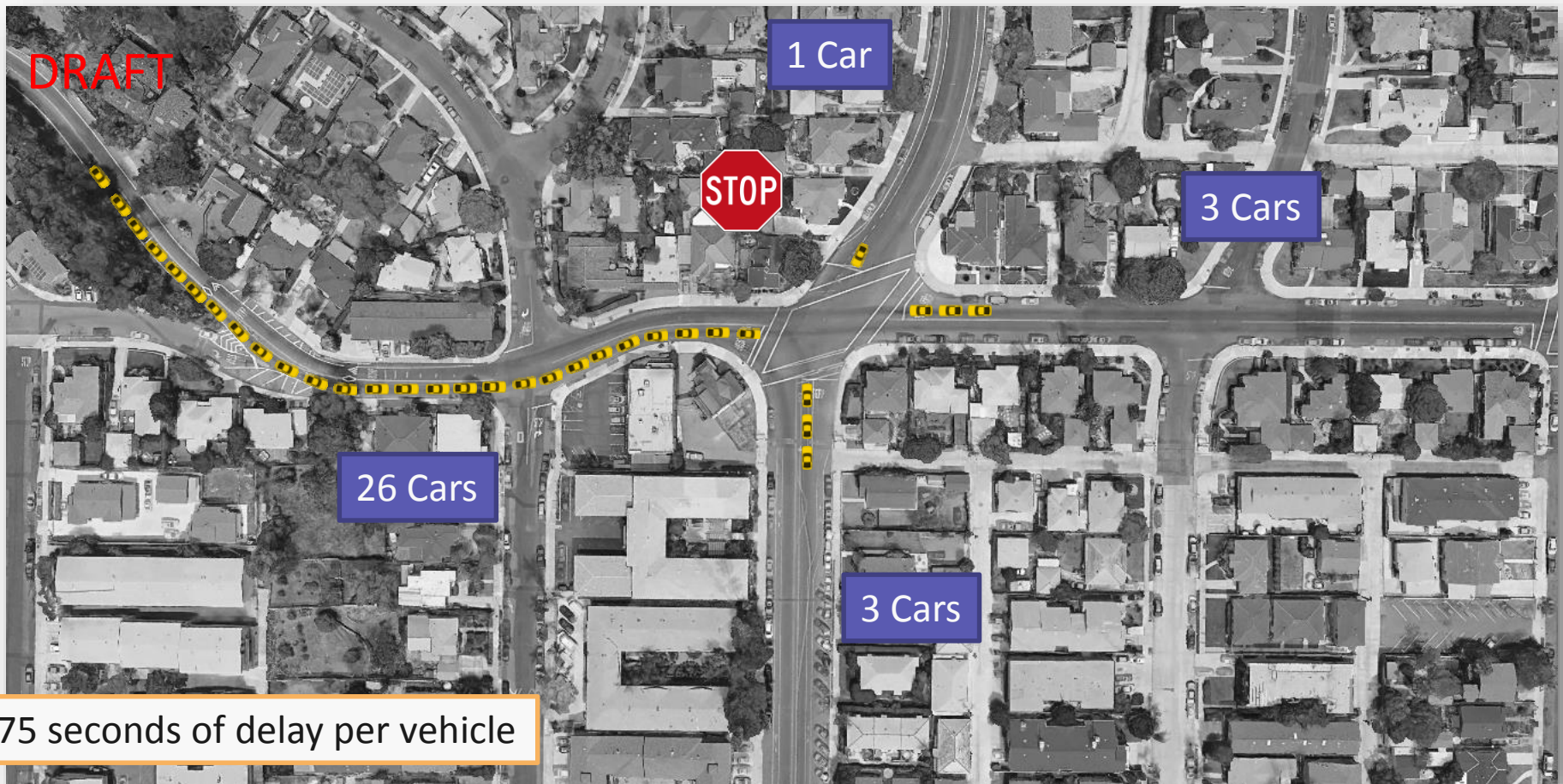
AM PEAK HOUR WITH PROJECT: MINI-ROUNDAABOUT





EUCLID AVENUE AND MONROE AVENUE 2020 AVERAGE QUEUE LENGTH

PM PEAK HOUR WITHOUT PROJECT: 4-WAY STOP

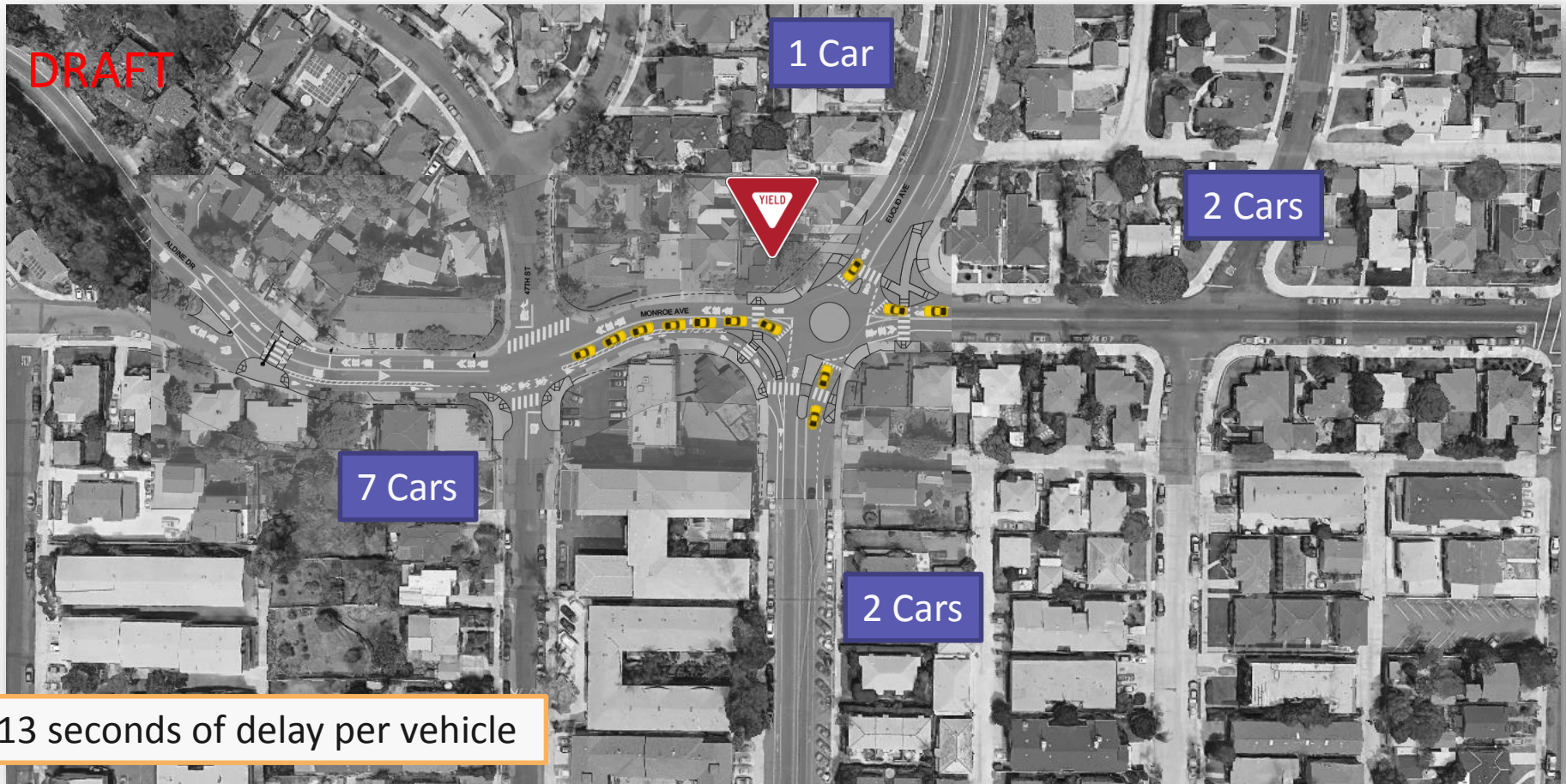


75 seconds of delay per vehicle



EUCLID AVENUE AND MONROE AVENUE 2020 AVERAGE QUEUE LENGTH

PM PEAK HOUR WITH PROJECT: MINI-ROUNDABOUT





MONROE BIKEWAY

OUTREACH SCHEDULE

- 6/27/17 – TMAD
- 7/12/17 – Ken/Tal Community Planning Group
- 7/12/17 – College Area Community Planning Board
- 7/18/17 – Talmadge Community Council
- August – Open House/Public Hearing
- 9/15/17 – SANDAG Transportation Committee - CEQA



MONROE BIKEWAY

PROCESS

- Current Schedule
 - Outreach Summer 2017 - Ongoing
 - Final Environmental September 2017
 - Complete Final Design May 2018
 - Begin Construction February 2019 (estimate)
 - Open to Public October 2019 (estimate)



MONROE BIKEWAY

STAY CONNECTED

- Danny.Veeh@sandag.org / (619) 699-7317
- KeepSanDiegoMoving.com/NorthParkMidCityBikeways
- Sign up to receive email newsletters