



# NORTH PARK | MID-CITY BIKEWAYS MONROE BIKEWAY

JULY 11, 2018  
KENSINGTON-TALMADGE PLANNING  
GROUP



# OUTLINE

- I. Project Background
- II. Recent Changes
- III. Traffic Simulation Videos

SANDAG Project Manager

Danny Veeh

(619) 699-7317

Danny.Veeh@sandag.org



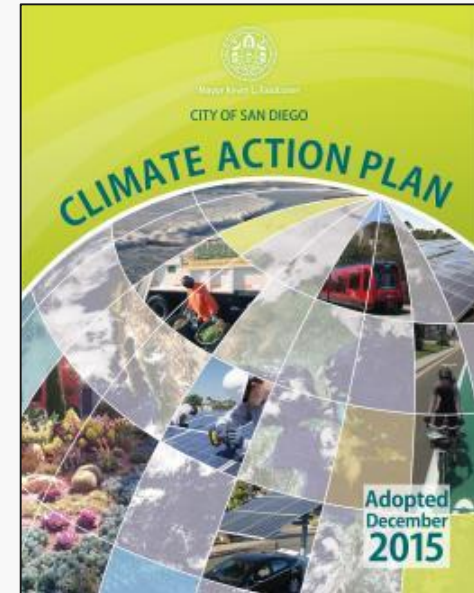
# NORTH PARK | MID-CITY BIKEWAYS

## POLICY SUPPORT

- Climate Action Plan
- Vision Zero

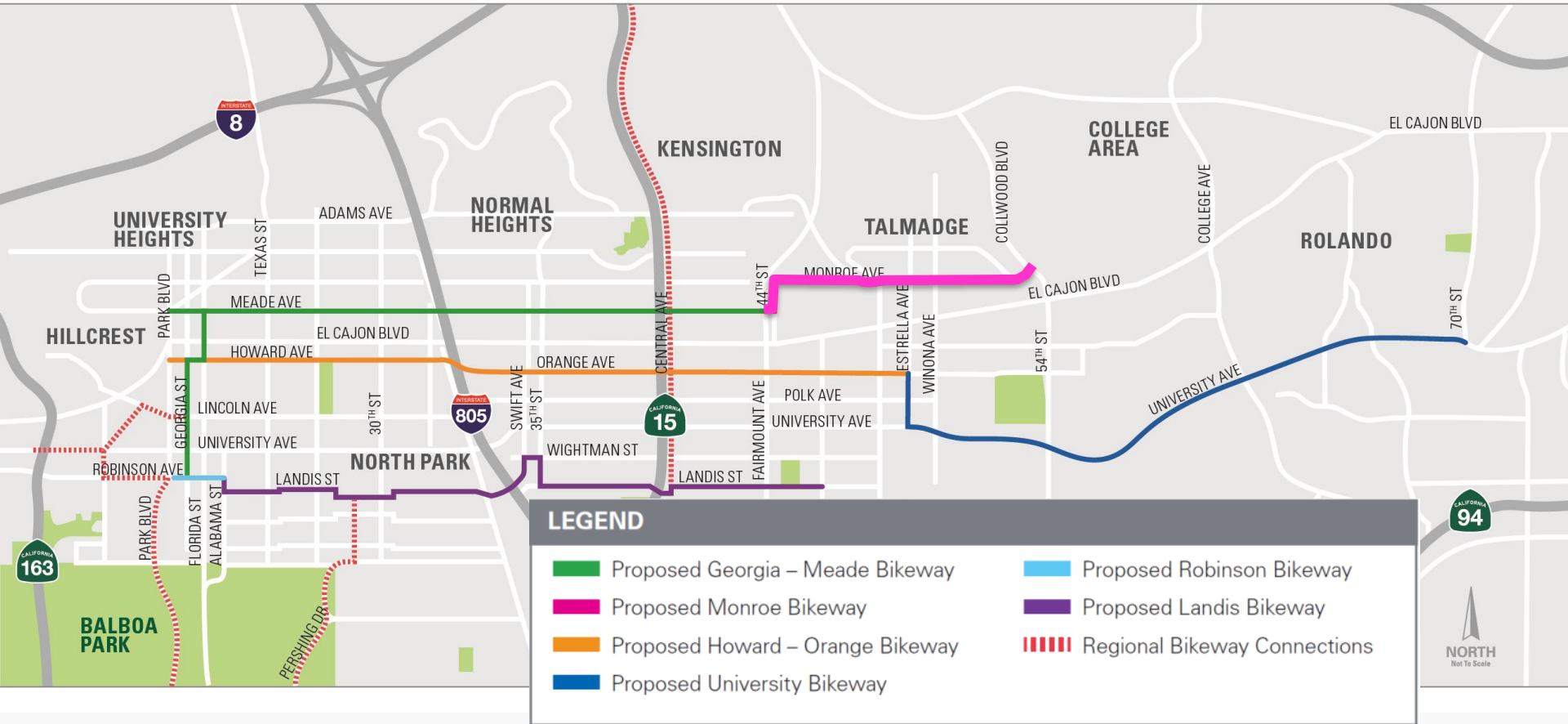
### TARGET:

Achieve 6% bicycle commuter mode share by 2020 and 18% mode share by 2035 in Transit Priority Areas.





# NORTH PARK | MID-CITY BIKEWAYS





# NORTH PARK | MID-CITY BIKEWAYS

## GENERAL OVERVIEW

- 13 miles across six bikeways
- 157,000 residents within ½ mile (five percent of region)
- Fully funded through construction
- SANDAG funds, designs, and constructs
- City of San Diego approves and maintains

### NPMC Ongoing Community Outreach

- 105 Stakeholder Meetings
- 38 Agency Meetings
- 8 Community Open House Meetings



# RECENT CHANGES



# MONROE BIKEWAY

## RECENT CHANGES

- Pedestrian Hybrid Beacon (PHB) / HAWK







# MONROE BIKEWAY

## RECENT CHANGES

- Bike Left Turn Pocket



Green Lake Way Seattle, WA





# MONROE BIKEWAY TALMADGE IMPROVEMENTS

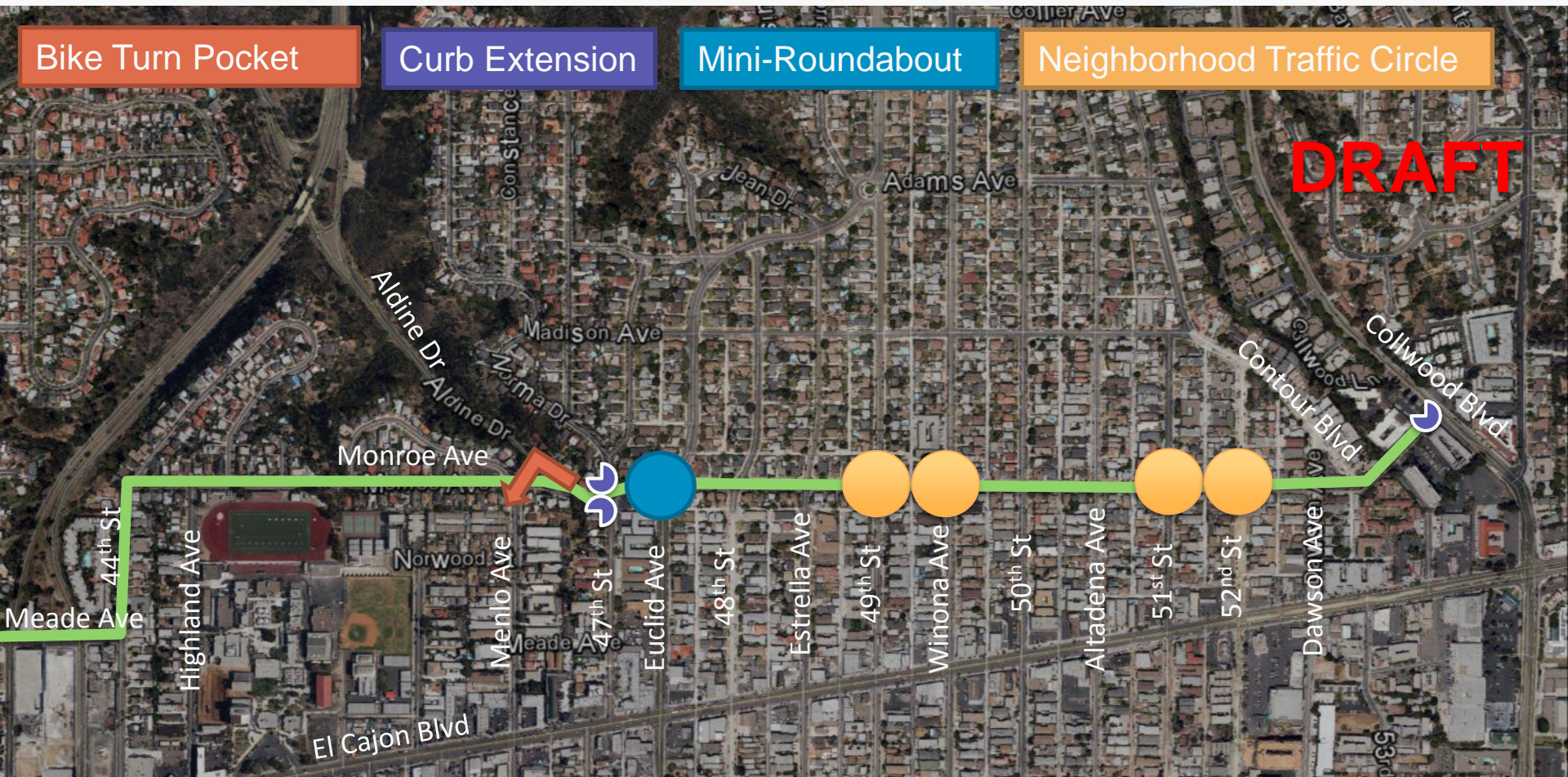
## PROPOSED IMPROVEMENTS

Bike Turn Pocket

Curb Extension

Mini-Roundabout

Neighborhood Traffic Circle



DRAFT

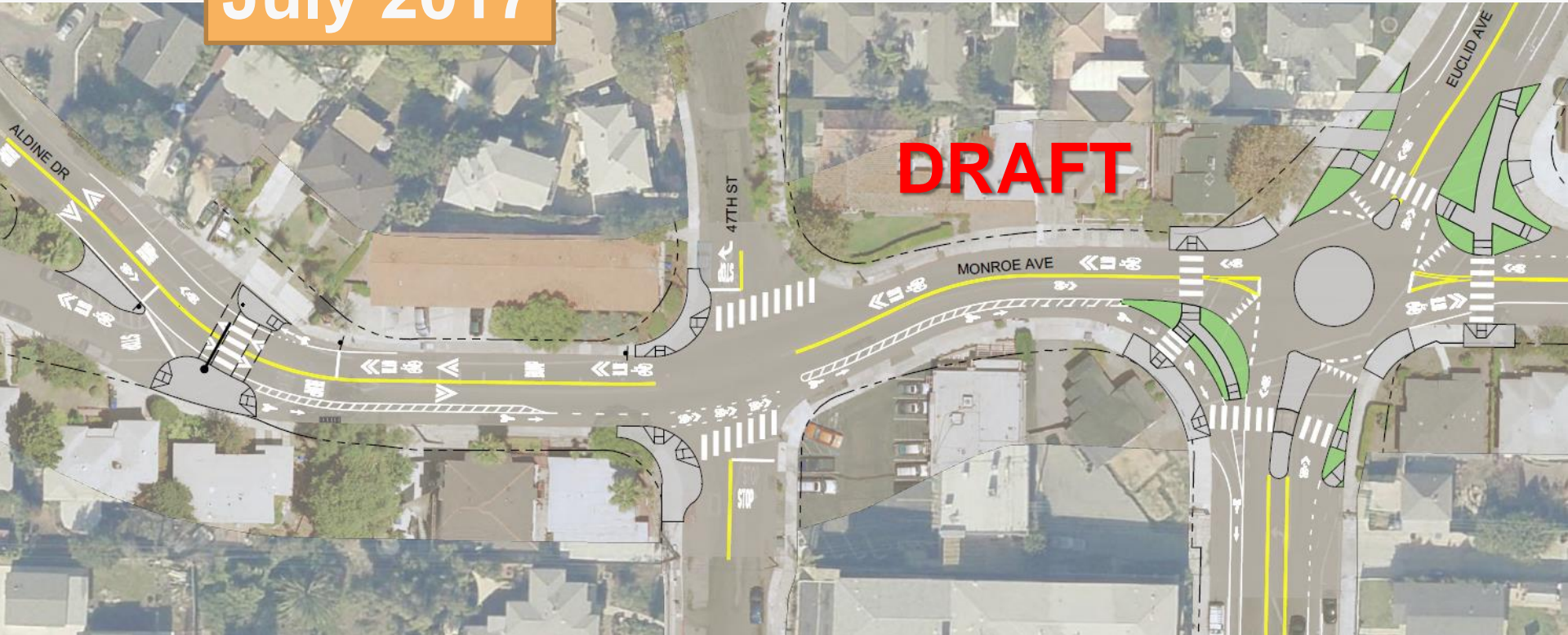




# MONROE BIKEWAY

## ALDINE DRIVE / 47<sup>TH</sup> STREET / EUCLID AVENUE

July 2017



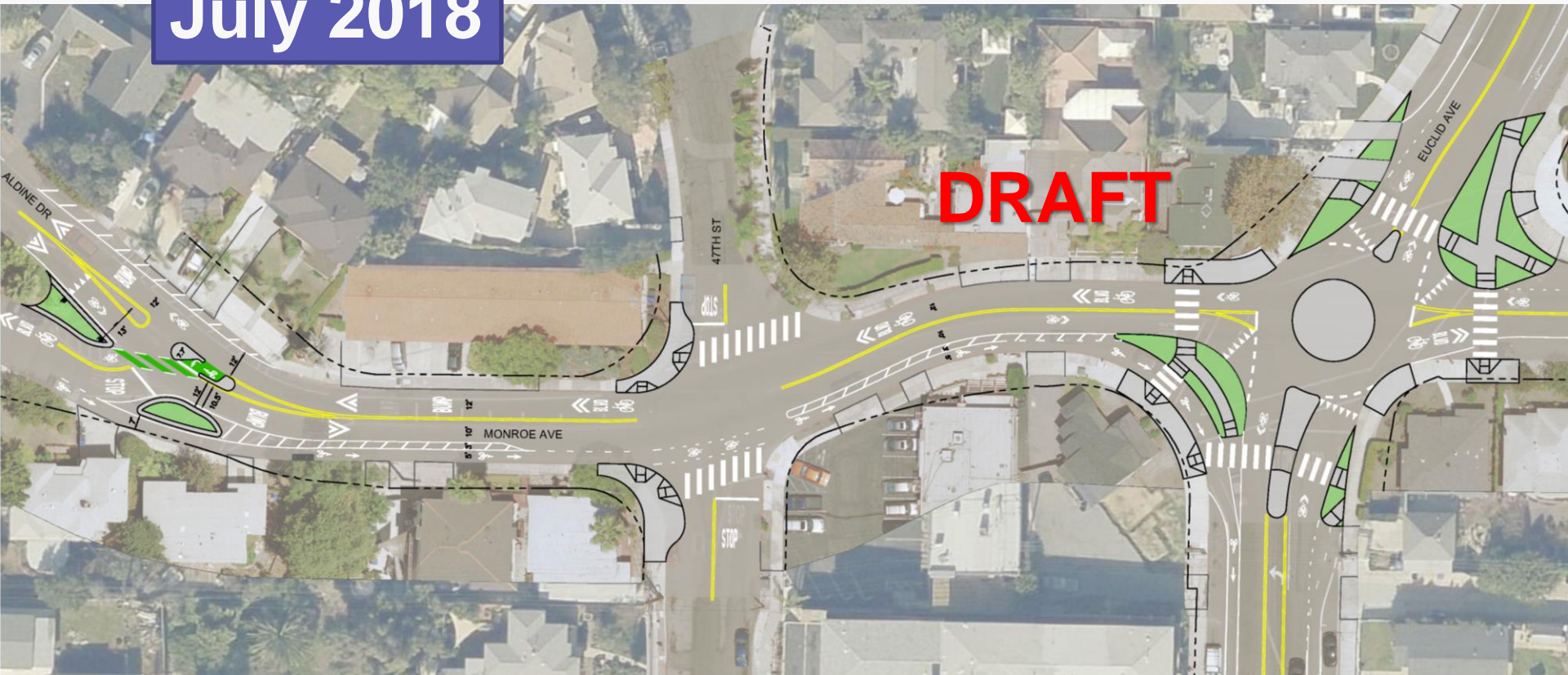
**DRAFT**



# MONROE BIKEWAY

## ALDINE DRIVE / 47<sup>TH</sup> STREET / EUCLID AVENUE

July 2018







# MONROE BIKEWAY

## ALDINE DRIVE / MONROE AVENUE



Overhead Flashing Beacon

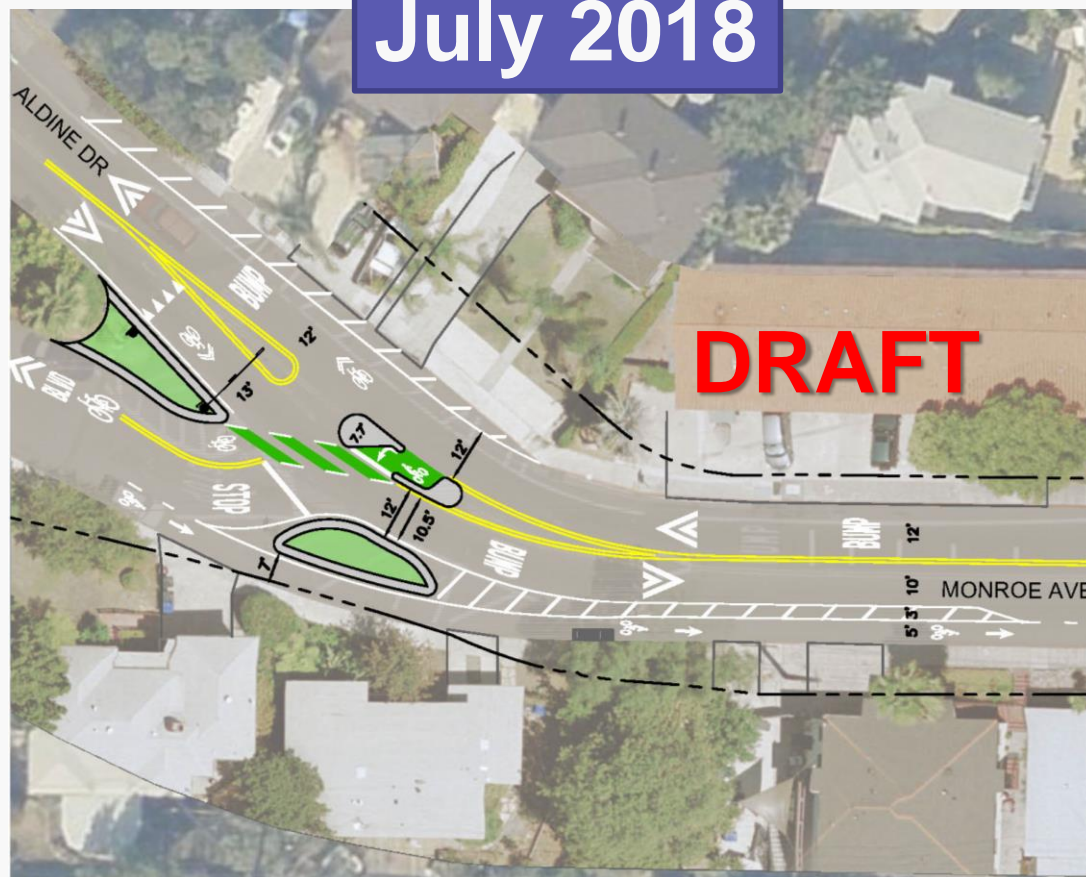


Decorative Signal Pole

Rectangular Rapid Flashing Beacon



July 2018

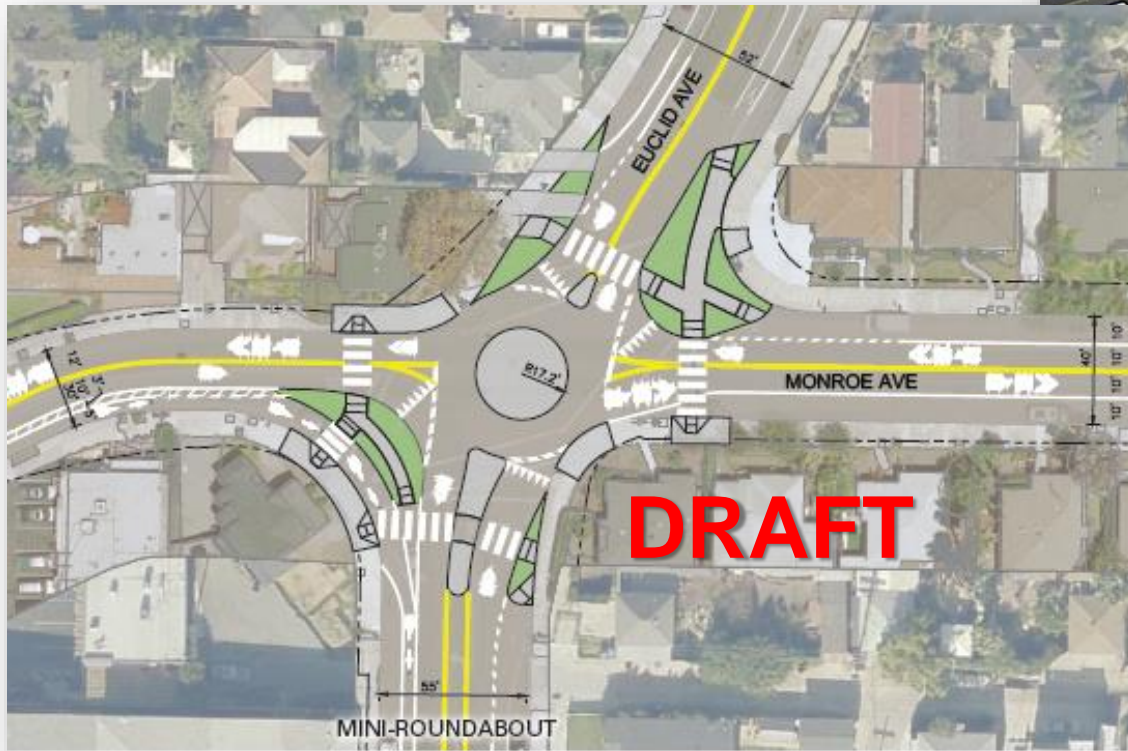


DRAFT



# MONROE BIKEWAY

## EUCLID AVENUE AND MONROE AVENUE







# MONROE BIKEWAY

## EUCLID AVENUE AND MONROE AVENUE





# TRAFFIC SIMULATION

MONROE, EUCLID, 47TH, ALDINE





# MONROE BIKEWAY

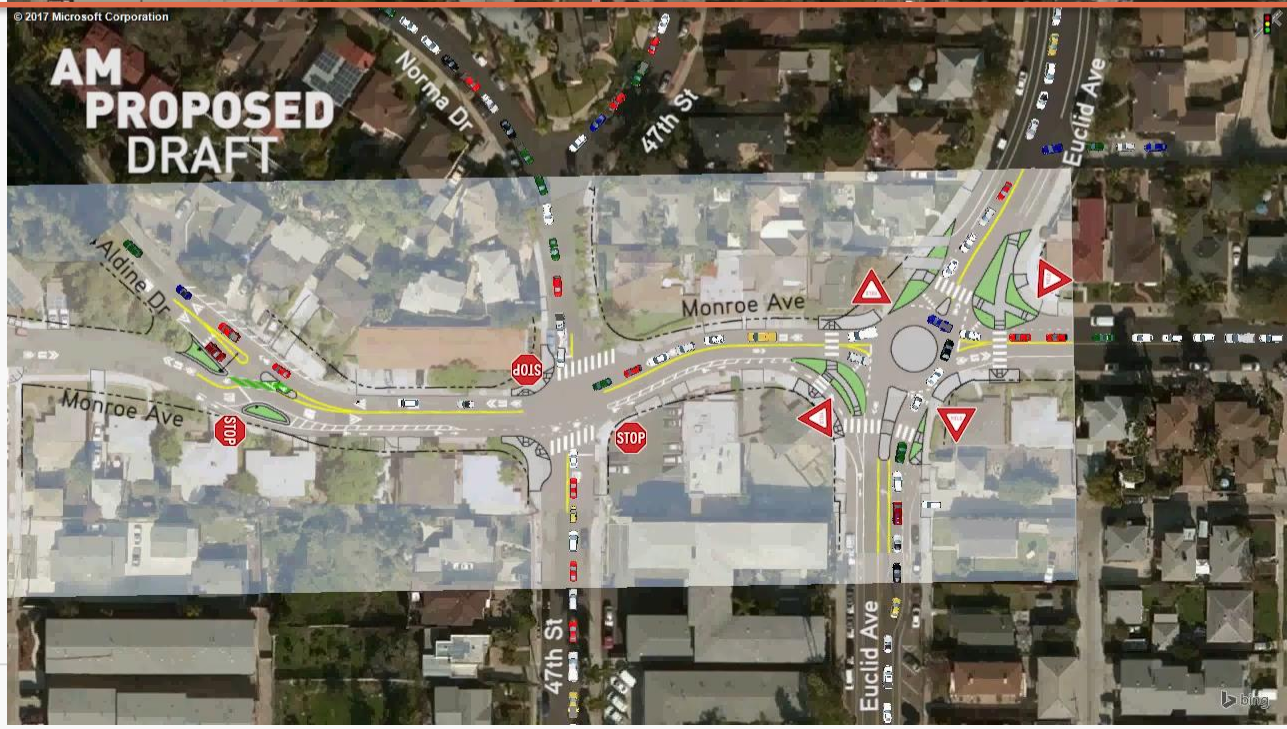
## TRAFFIC SIMULATION

- Traffic counts (Sep 2017)
- Traffic patterns and behaviors verified with staff observations and YouTube drone footage
  - Courtesy Yield Condition
- VISSIM traffic simulation model
  - Existing Condition AM and PM Peak Hour
  - Existing + Project Condition AM and PM Peak Hour





# AM PEAK HOUR

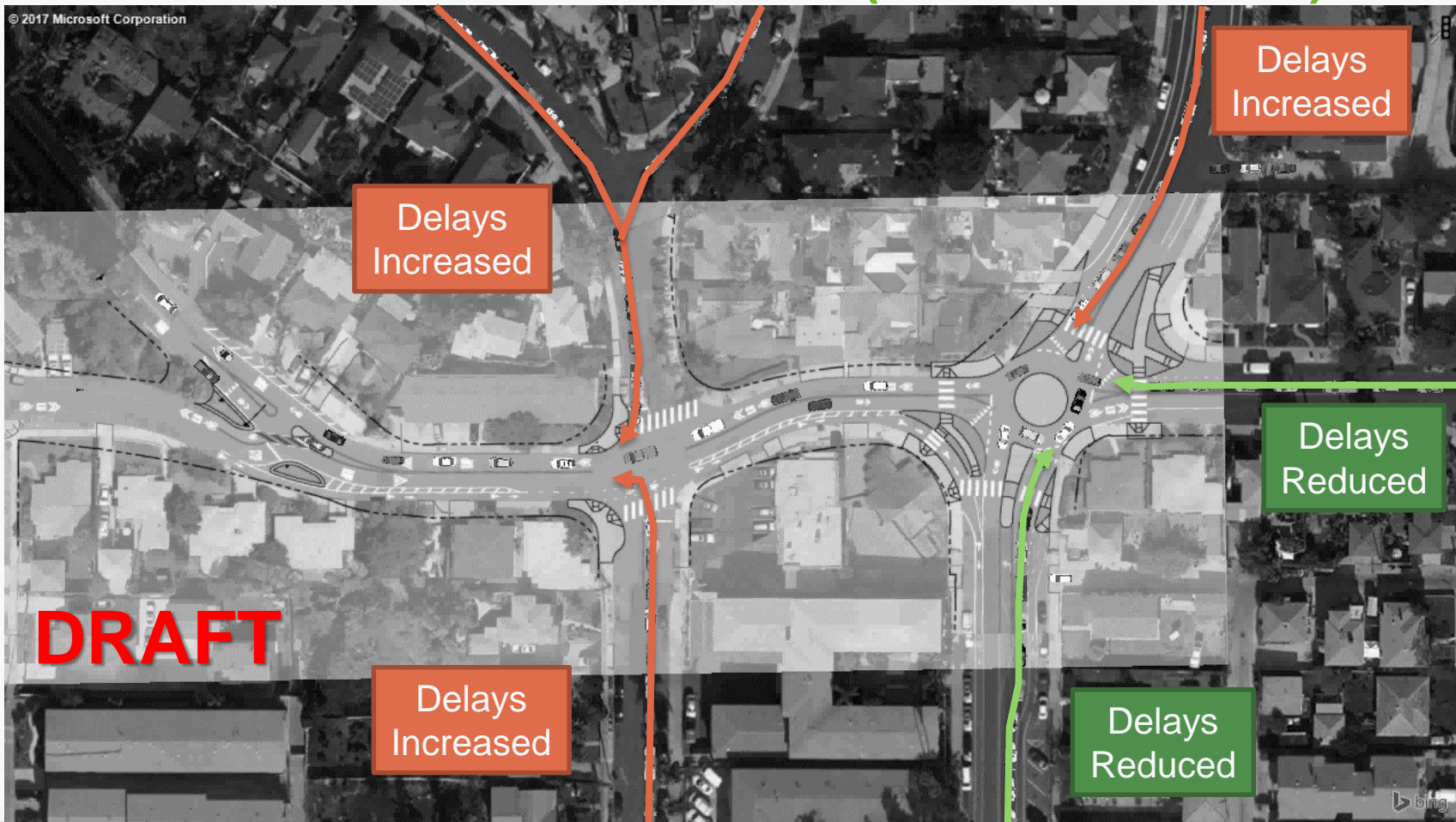






# MONROE BIKEWAY

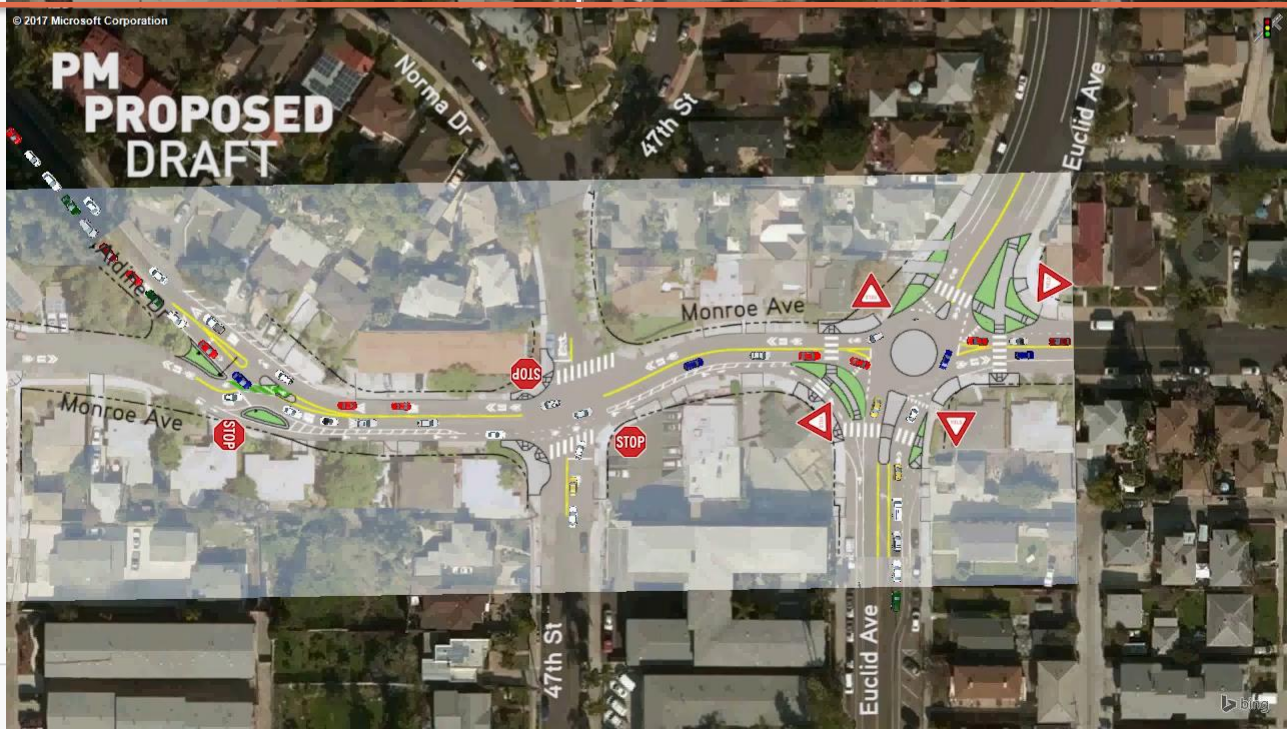
## TRAFFIC SIMULATION TRENDS (AM PEAK HOUR)







# PM PEAK HOUR









# MONROE BIKEWAY

## PROCESS

- Fall 2018 (TBD) – Open House/ CEQA Public Hearing
- Fall 2018 (TBD) – SANDAG Transportation Committee CEQA
- Late 2019 – Complete Final Design/City Review
- 2020 – Begin Construction
- 2021 – Open to Public



# MONROE BIKEWAY

## STAY CONNECTED

- [Danny.Veeh@sandag.org](mailto:Danny.Veeh@sandag.org) / (619) 699-7317
- [KeepSanDiegoMoving.com/MonroeBikeway](http://KeepSanDiegoMoving.com/MonroeBikeway)
- Sign up to receive email newsletters