



MONROE BIKEWAY NORTH PARK | MID-CITY BIKEWAYS

JUNE 8, 2016
KENSINGTON-TALMADGE COMMUNITY
PLANNING GROUP



OUTLINE

- I. **North Park | Mid-City Bikeways project overview**
- II. Monroe Bikeway design features
- III. Monroe Bikeway proposed improvements
 - I. West Talmadge (44th to Menlo)
 - II. East Talmadge (48th to Collwood)
 - III. Central Talmadge (Aldine to Euclid)

SANDAG Project Manager

Danny Veeh

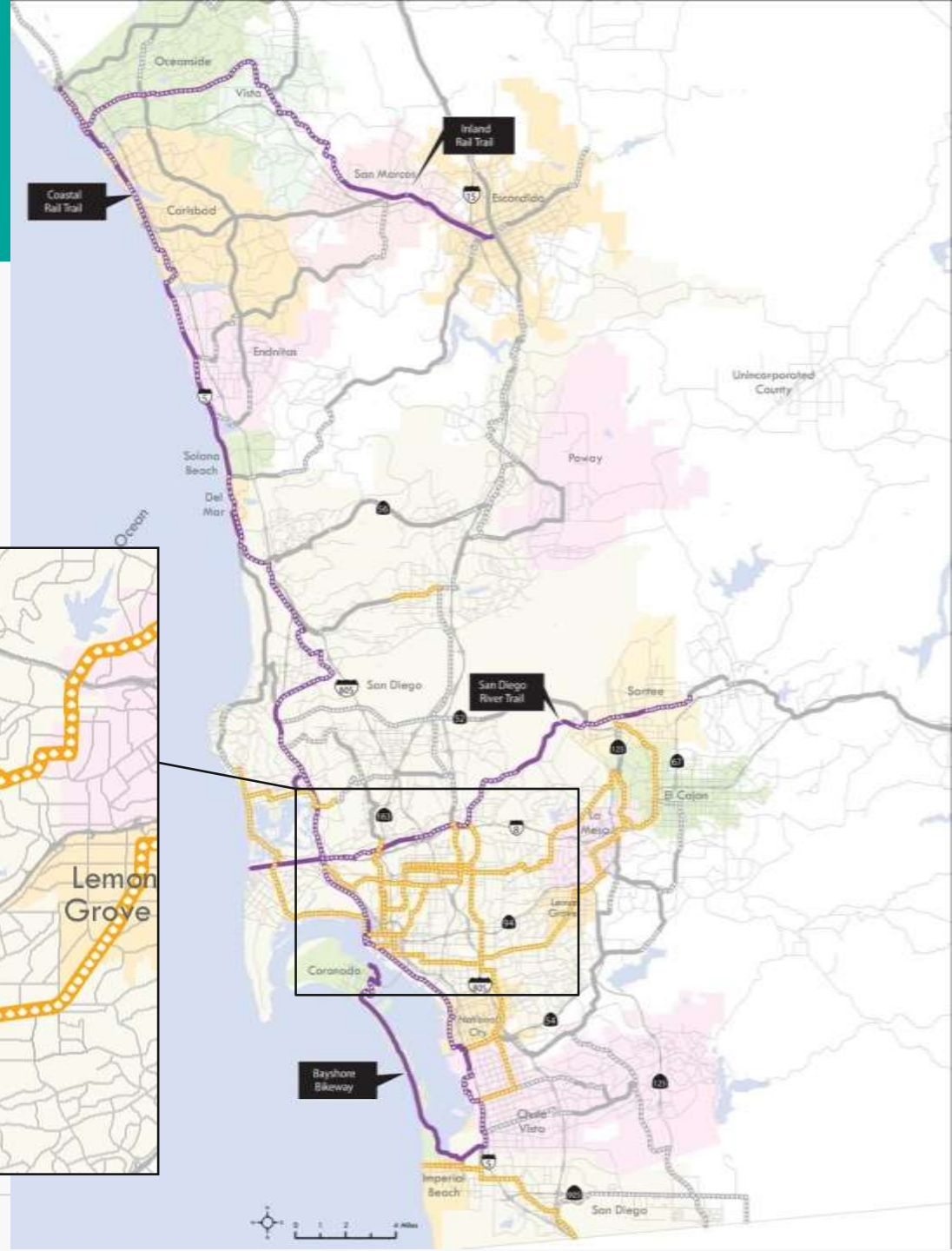
(619) 699-7317

Danny.Veeh@sandag.org



REGIONAL NETWORK

HIGH PRIORITY BIKE PROJECTS





EVERYDAY PEOPLE, EVERYDAY TRIPS

No way

**Interested,
but concerned**

(potential bikeway users)

Anywhere, anytime





PROJECT GOALS

SAFETY

Provide safe, livable, complete streets that serve people of all ages and abilities

ACCESS

Provide direct access to schools, transit, community destinations, and commercial centers

EXPERIENCE

Design innovative facilities with appropriate separation from vehicular traffic, traffic calming elements, and end-of-trip facilities

COMMUNITY

Be consistent with and leverage community planning efforts

PLACEMAKING AND SUSTAINABILITY

Support placemaking, sustainability, equity, and economic development and redevelopment efforts





NORTH PARK | MID-CITY BIKEWAYS



LEGEND

Proposed Georgia – Meade Bikeway	Proposed Robinson Bikeway
Proposed Monroe Bikeway	Proposed Landis Bikeway
Proposed Howard – Orange Bikeway	Regional Bikeway Connections
Proposed University Bikeway	





NORTH PARK | MID-CITY BIKEWAYS

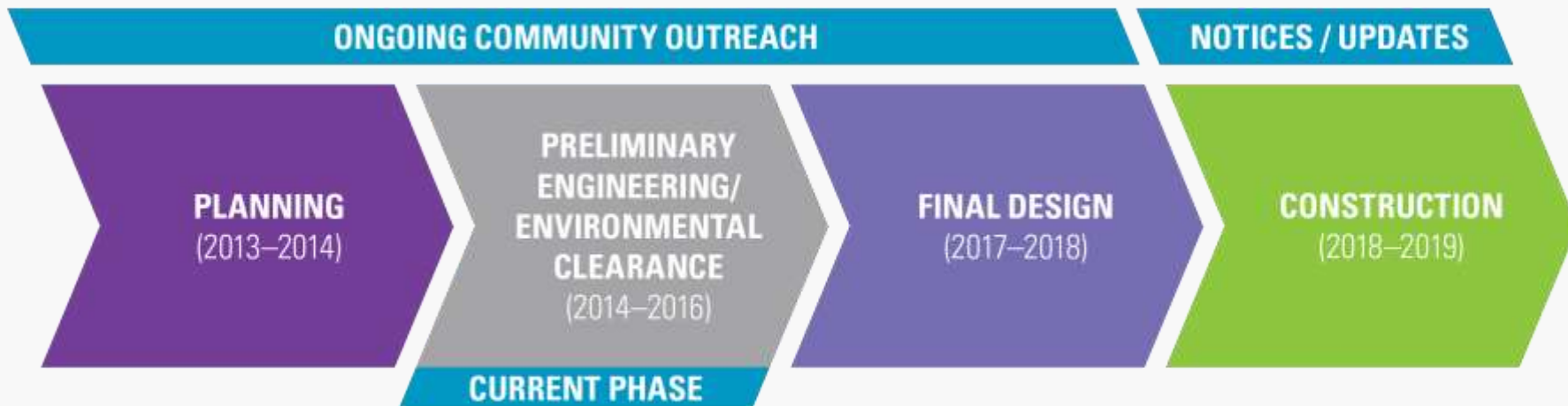
GENERAL OVERVIEW

- 13 miles across six bikeways
- 157,000 residents within ½ mile (five percent of region)
- Fully funded through construction
- SANDAG funds, designs, and constructs
- City of San Diego approves and maintains



MONROE BIKEWAY

PROCESS



NPMC Ongoing Community Outreach

- 80 Stakeholder Meetings
- 22 Agency Meetings
- 7 Community Open House Meetings



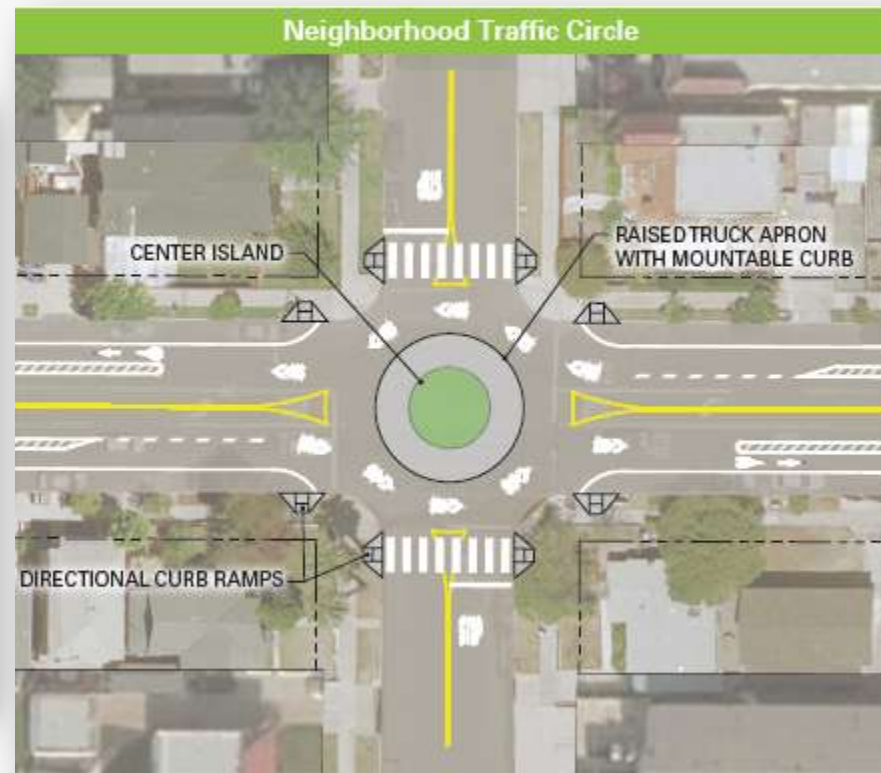
OUTLINE

- I. North Park | Mid-City Bikeways project overview
- II. Monroe Bikeway design features**
- III. Monroe Bikeway proposed improvements
 - I. West Talmadge (44th to Menlo)
 - II. East Talmadge (48th to Collwood)
 - III. Central Talmadge (Aldine to Euclid)



BIKEWAY FEATURES

NEIGHBORHOOD TRAFFIC CIRCLE

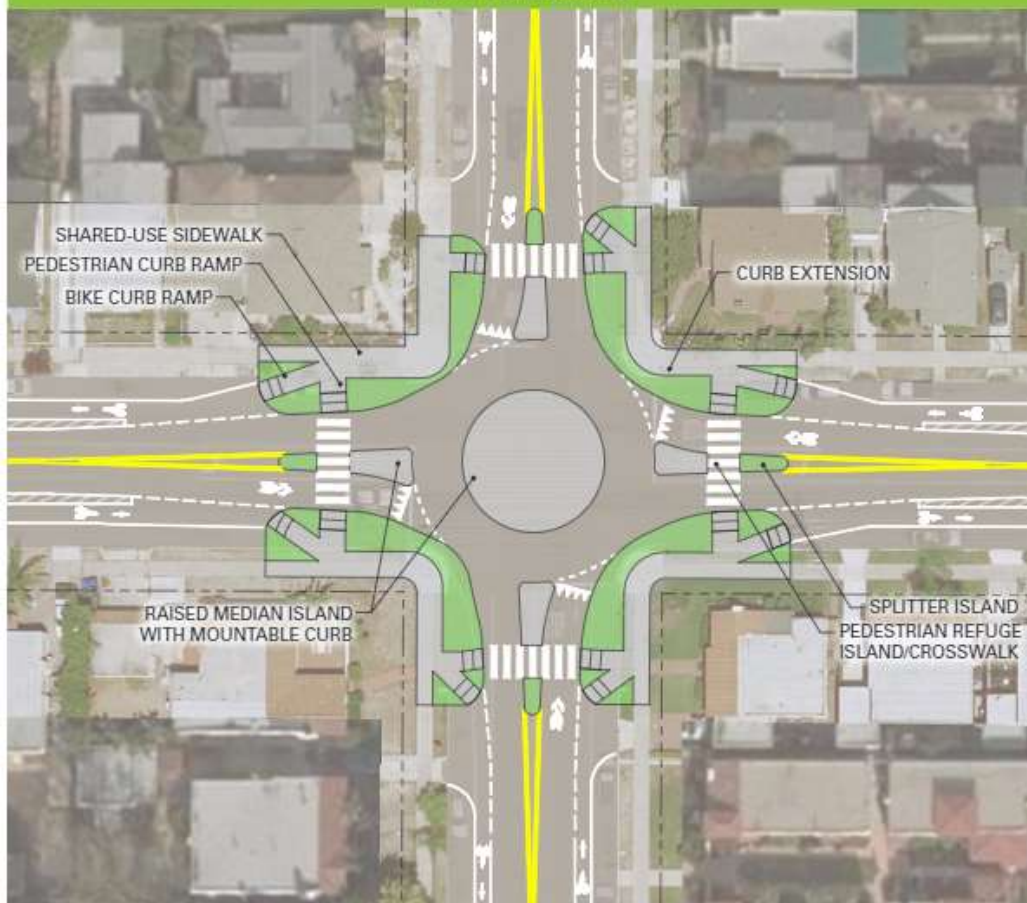




BIKEWAY FEATURES

MINI-ROUNDABOUT

Mini-Roundabout



Neighborhood Traffic Circle





BIKEWAY FEATURES

BUFFERED BIKE LANES



4th Ave., Bankers Hill



BIKEWAY FEATURES

CURB EXTENSION



25th and Broadway, Golden Hill



BIKEWAY FEATURES

RAISED CROSSWALK



Gardendale Rd., Encinitas



BIKEWAY FEATURES

TWO STAGE TURN BOX



18th St., National City



OUTLINE

- I. North Park | Mid-City Bikeways project overview
- II. Monroe Bikeway design features
- III. Monroe Bikeway proposed improvements**
 - I. West Talmadge (44th to Menlo)
 - II. East Talmadge (48th to Collwood)
 - III. Central Talmadge (Aldine to Euclid)



MONROE BIKEWAY TALMADGE IMPROVEMENTS

PROPOSED IMPROVEMENTS

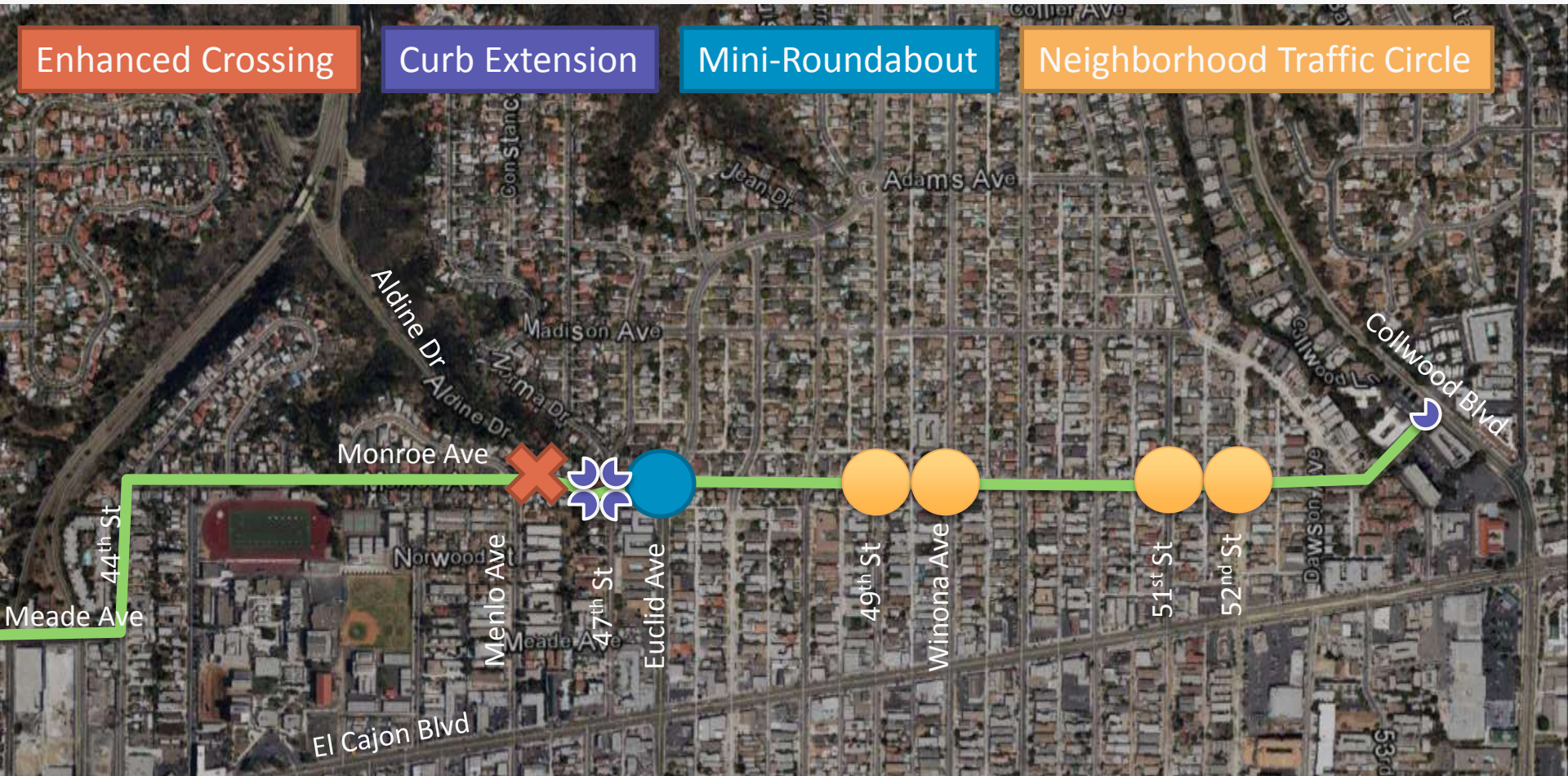
DRAFT

Enhanced Crossing

Curb Extension

Mini-Roundabout

Neighborhood Traffic Circle

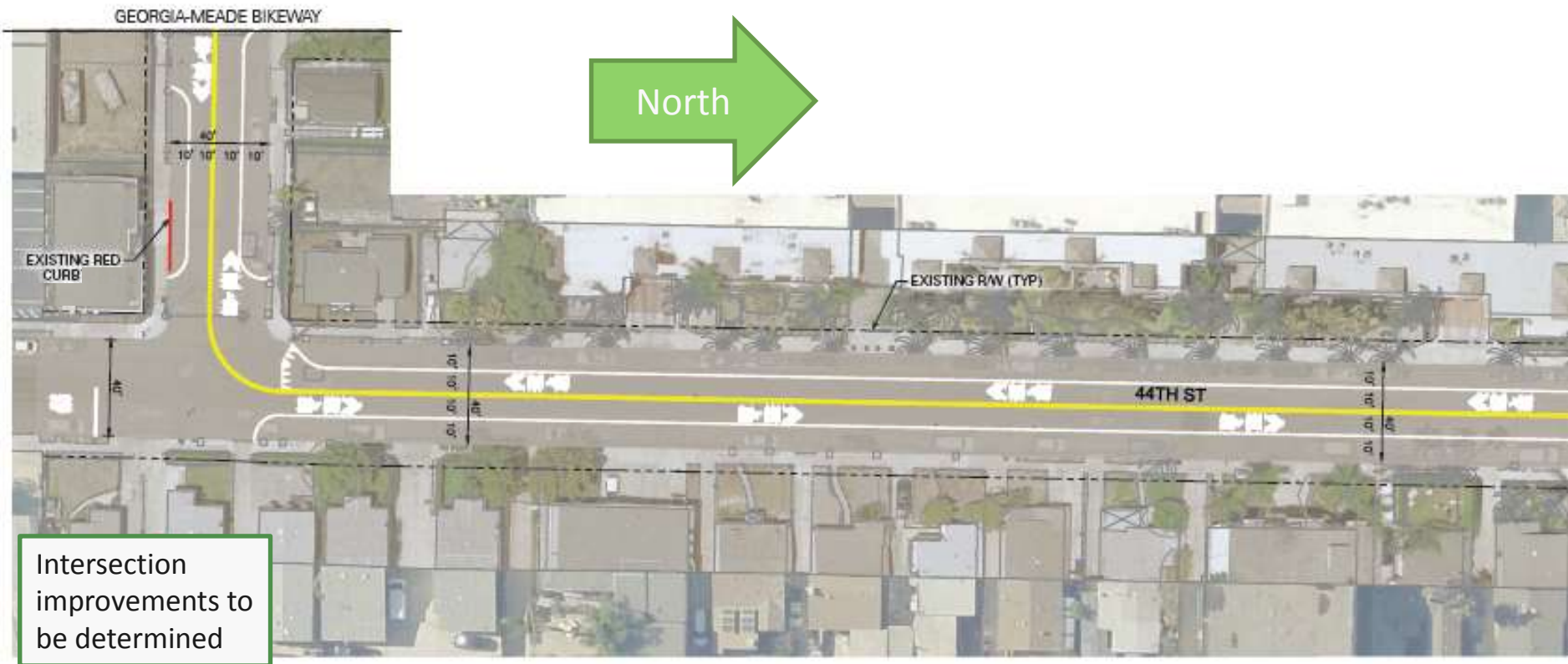




MONROE BIKEWAY WEST TALMADGE IMPROVEMENTS

44TH STREET / MEADE AVENUE

DRAFT





MONROE BIKEWAY WEST TALMADGE IMPROVEMENTS

44TH STREET / MONROE AVENUE / HIGHLAND AVENUE

DRAFT



Hoover High School



MONROE BIKEWAY WEST TALMADGE IMPROVEMENTS

45TH STREET / MAX DRIVE

DRAFT



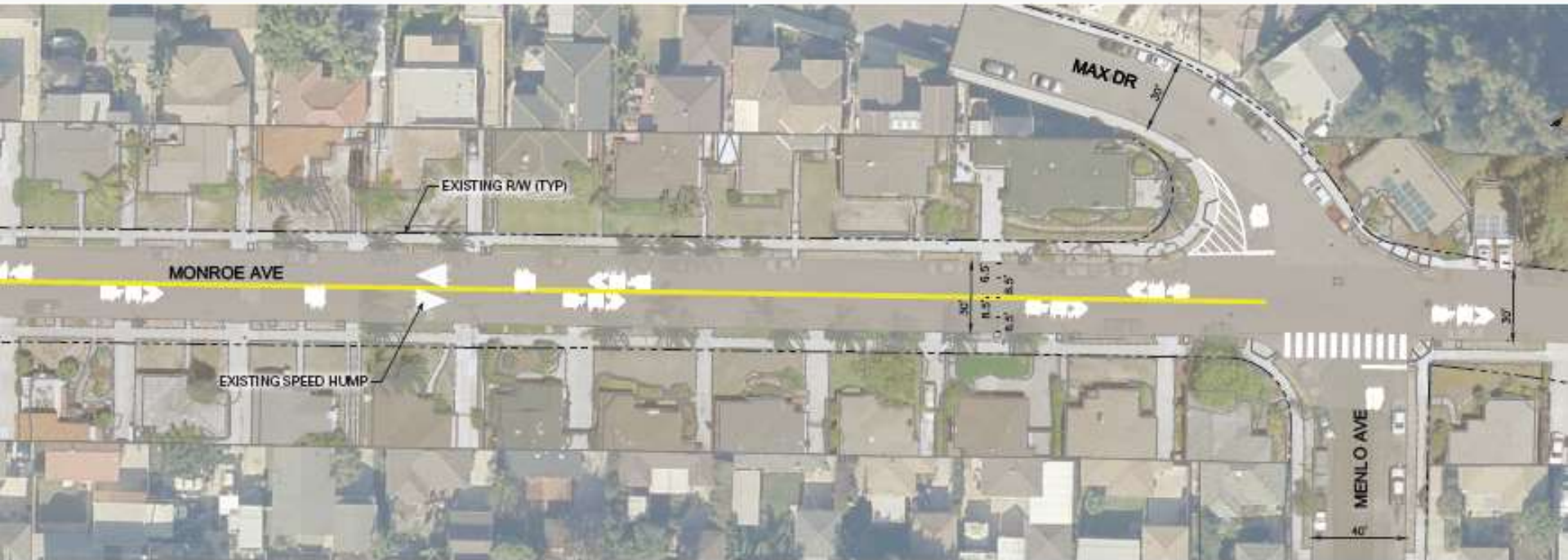
Hoover High School



MONROE BIKEWAY WEST TALMADGE IMPROVEMENTS

MAX DRIVE / MENLO AVENUE

DRAFT





MONROE BIKEWAY

EAST TALMADGE





MONROE BIKEWAY EAST TALMADGE IMPROVEMENTS

48TH STREET / ESTRELLA AVE

DRAFT





MONROE BIKEWAY EAST TALMADGE IMPROVEMENTS

49TH STREET / WINONA AVE

DRAFT





MONROE BIKEWAY EAST TALMADGE IMPROVEMENTS

50TH STREET / ALTADENA AVE

DRAFT





MONROE BIKEWAY EAST TALMADGE IMPROVEMENTS

51ST STREET / 52ND STREET

DRAFT

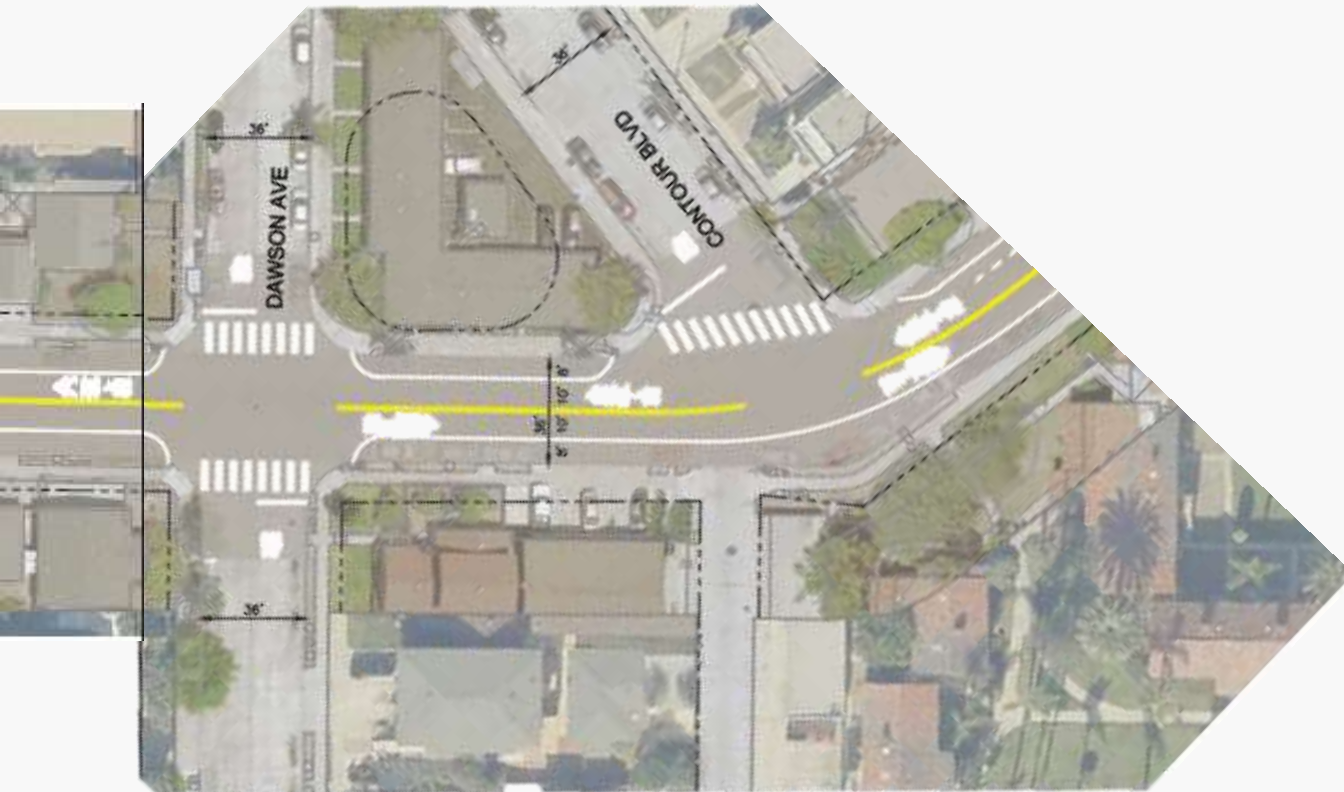




MONROE BIKEWAY EAST TALMADGE IMPROVEMENTS

DAWSON AVENUE / CONTOUR BOULEVARD

DRAFT

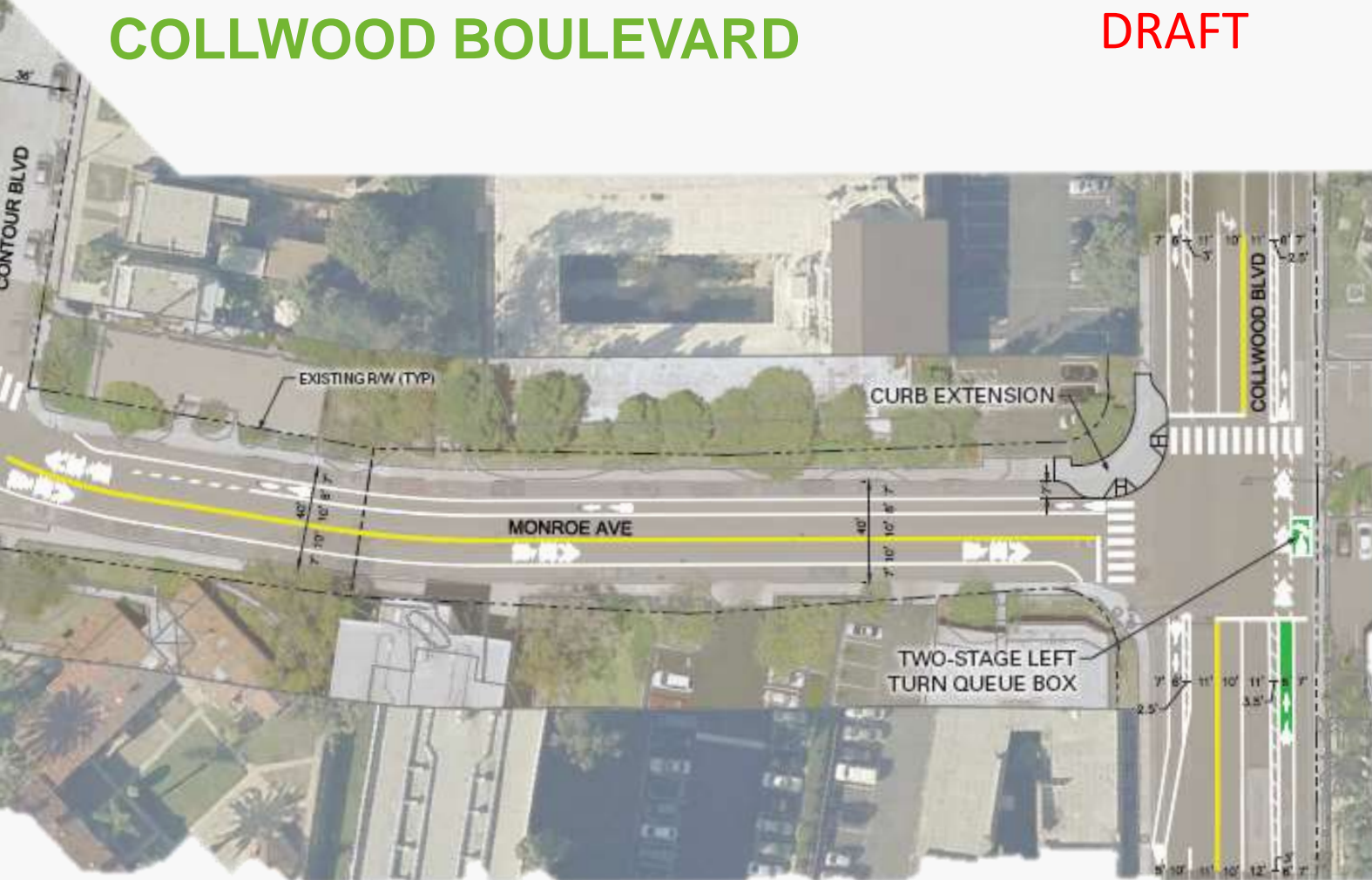




MONROE BIKEWAY EAST TALMADGE IMPROVEMENTS

COLLWOOD BOULEVARD

DRAFT





MONROE BIKEWAY

CENTRAL TALMADGE

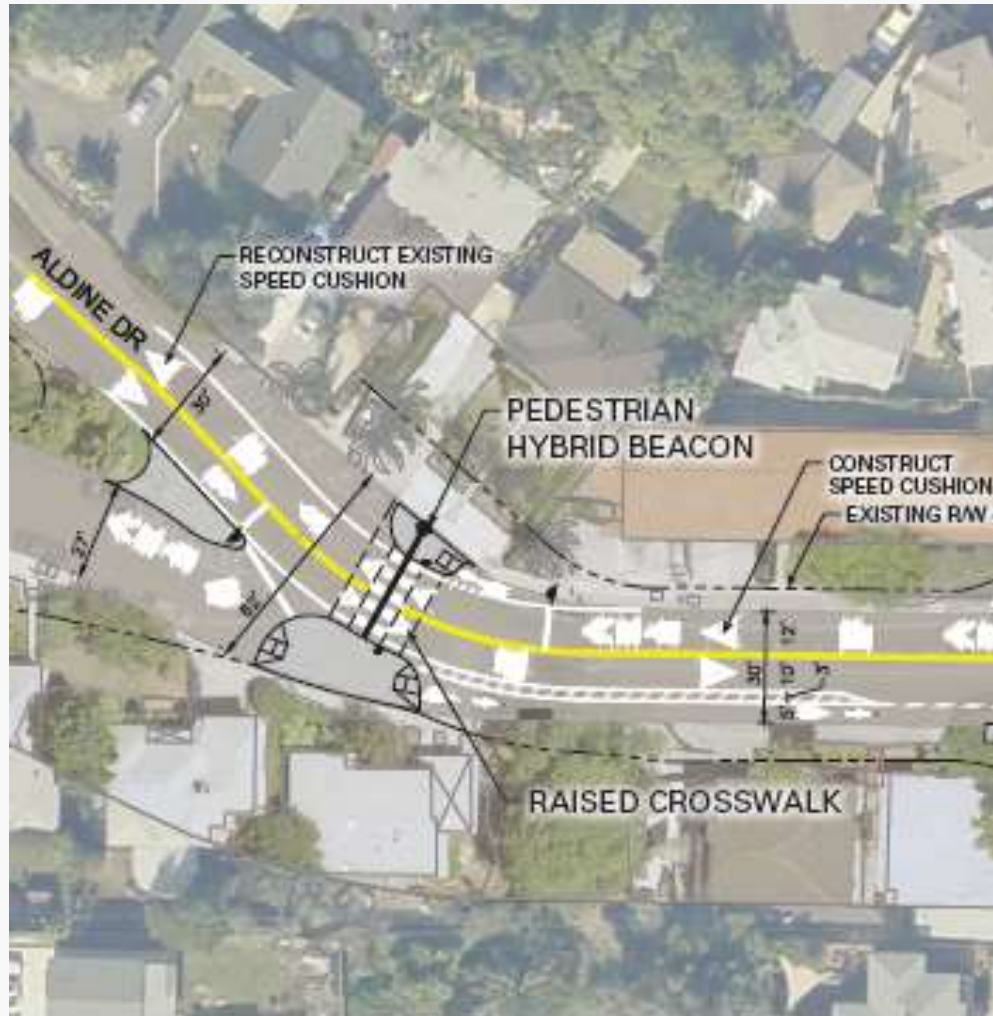




MONROE BIKEWAY CENTRAL TALMADGE IMPROVEMENTS

ALDINE DRIVE

DRAFT





BIKEWAY FEATURE

PEDESTRIAN HYBRID BEACON

DRAFT

AKA: HAWK (High-Intensity Activated Crosswalk beacon)



Mission Center Rd., San Diego

1. Dark until activated	2. Flashing yellow light for 3–6 s	3. Steady yellow light for 3–6 s
4. Steady red light during pedestrian interval	5. Alternating flashing red lights during pedestrian clearance interval	



MONROE BIKEWAY CENTRAL TALMADGE IMPROVEMENTS

47TH STREET

DRAFT





MONROE BIKEWAY CENTRAL TALMADGE IMPROVEMENTS

EUCLID AVENUE

DRAFT





MONROE BIKEWAY CENTRAL TALMADGE IMPROVEMENTS

VISUAL SIMULATION

DRAFT





MONROE BIKEWAY CENTRAL TALMADGE IMPROVEMENTS

ALDINE DRIVE / 47TH STREET / EUCLID AVENUE **DRAFT**





MONROE BIKEWAY

AESTHETICS

DRAFT

Lithomosaic

Dana Headlands - Dana Point, CA



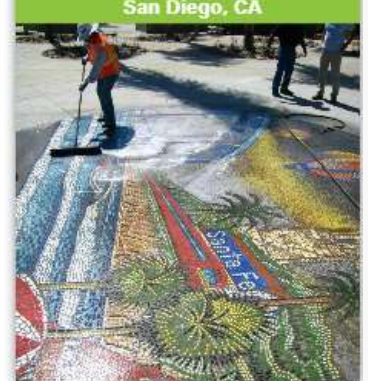
Pioneer Modernism Park - Lemon Grove, CA



AquaLink Station - Long Beach, CA



North Island Credit Union - San Diego, CA



Colored/Stamped Concrete

25th and B - San Diego, CA





MONROE BIKEWAY

AESTHETICS

DRAFT

National City, CA



Montgomery Ave - Encinitas, CA



Kimball Park - National City, CA



Bird Park - San Diego, CA



Bird Rock - La Jolla, CA



Ward Canyon Park - San Diego, CA



Helena, MT



Carlsbad, CA





PARKING ASSESSMENT

DRAFT



Key:

- Spaces replaced by improvements and within the 20' no parking zone recommended by CA MUTCD
- Spaces replaced by improvements beyond the 20' no parking zone



NORTH



COMMUNITY MEETING

- Date
 - TBD (Fall 2016)
- Location
 - TBD near Talmadge
- Outreach
 - Post cards or door hangers to residents/owners
 - Email, Website, Social Media, Community Calendars, Advertisements
 - Community Planning Groups





SR 15 | CENTRAL AVENUE BIKEWAY

PROJECT OVERVIEW

- 1.2 mile bikeway parallel to SR 15 between Adams Avenue and Landis Street
- Provides safe connections to destinations in Kensington and City Heights
- Public outreach begins this summer
- Neighborhood meetings are being scheduled





MONROE BIKEWAY

WE WANT YOUR FEEDBACK

- Comments
 - Danny.Veeh@sandag.org / (619) 699-7317
- Stay connected
 - KeepSanDiegoMoving.com/NorthParkMidCityBikeways
 - **Sign up to receive email newsletters**