

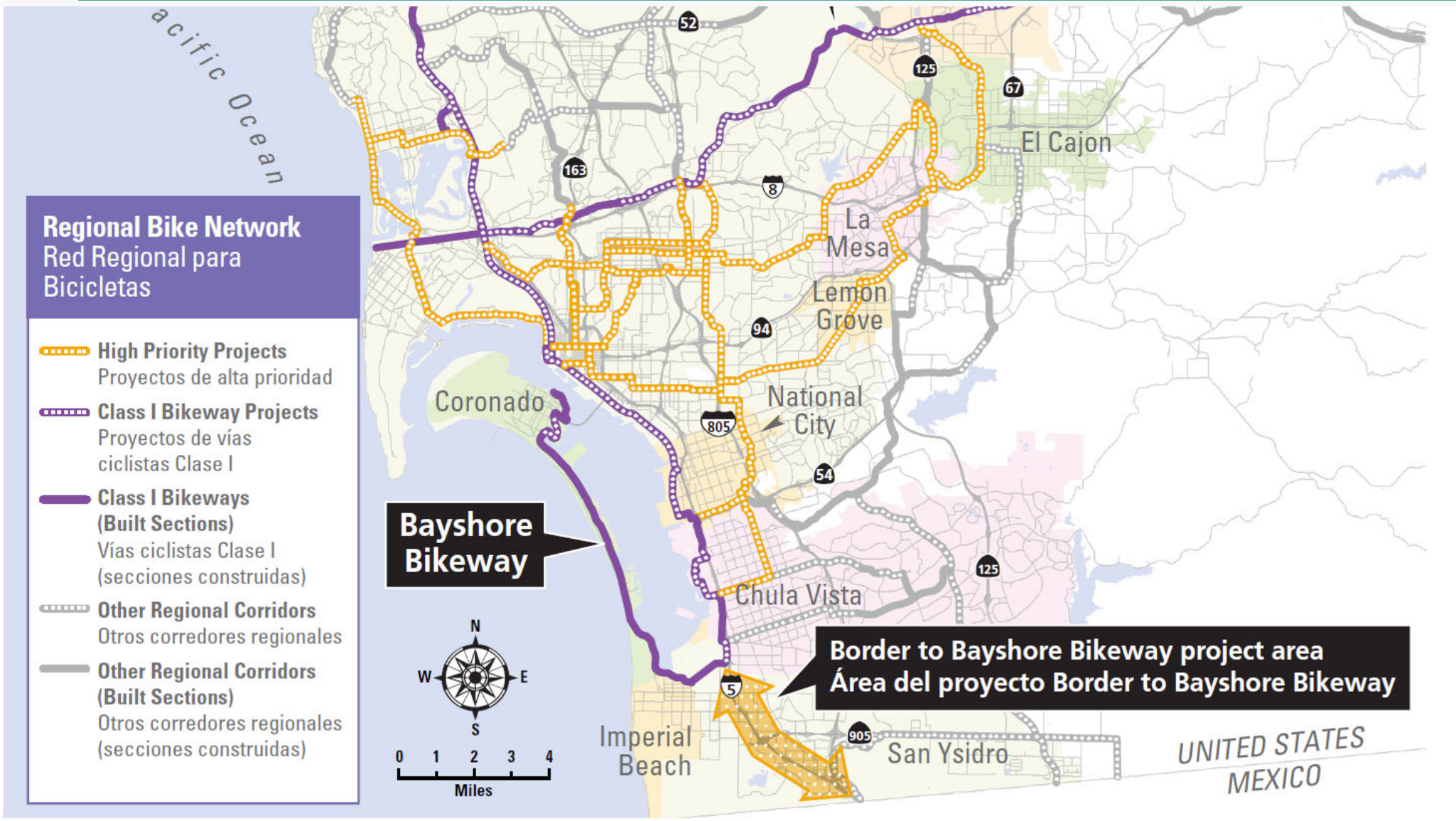


BORDER TO BAYSHORE BIKEWAY

Youth Resident Leadership Academy
November 20, 2018



HOW DOES THE BORDER TO BAYSHORE BIKEWAY FIT IN?





EVERYDAY PEOPLE, EVERYDAY TRIPS / SAFE “LOW STRESS STREETS”

No way

**Interested,
but concerned**

(potential bikeway users)

**Anywhere,
anytime**

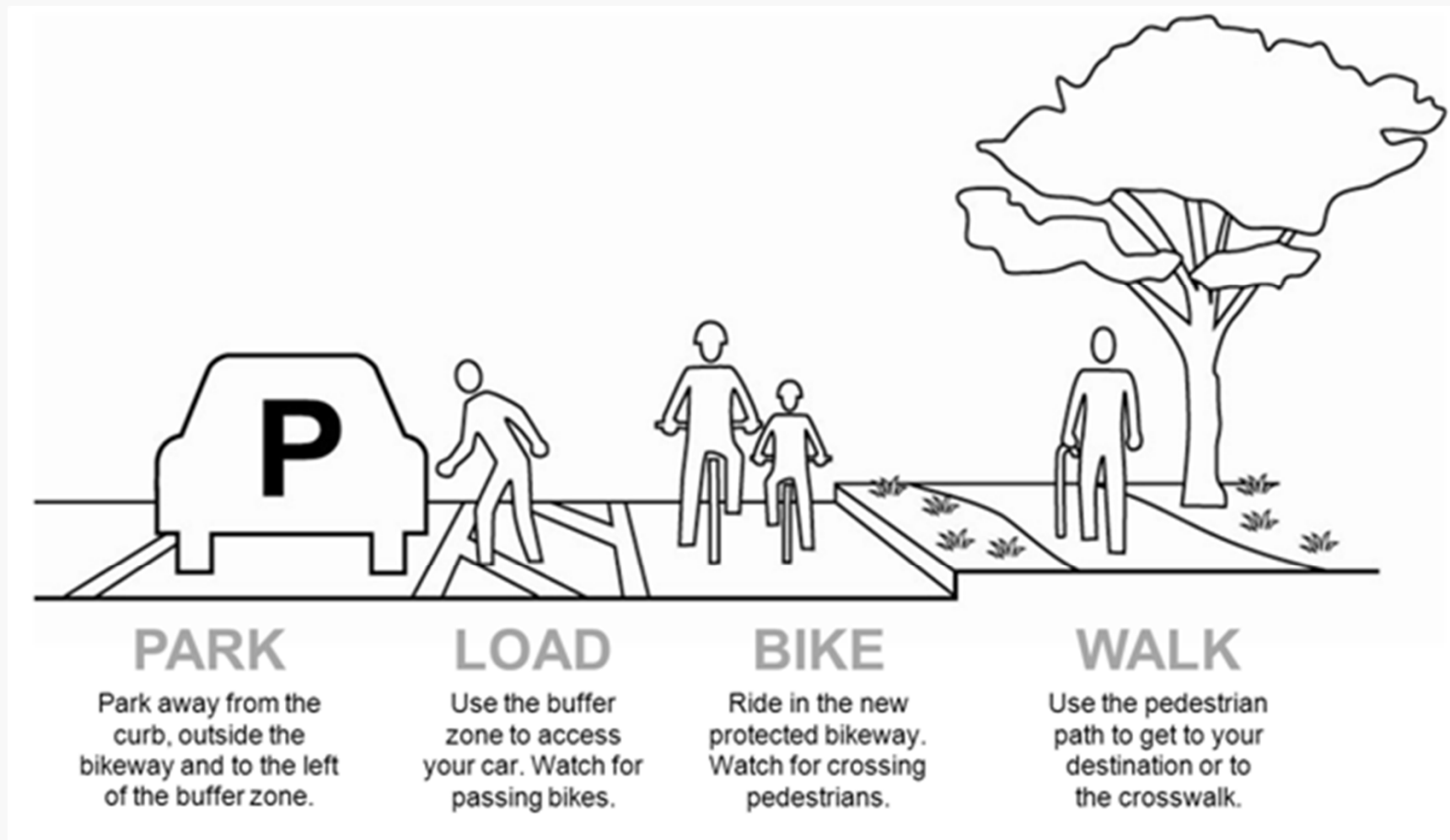




BIKEWAY FEATURES

PROPOSED IMPROVEMENTS:

Parking Protected Bike Lanes





BIKEWAY FEATURES

PROPOSED IMPROVEMENTS:

Parking Protected Bike Lanes





BIKEWAY FEATURES

PROPOSED IMPROVEMENTS

Protected Intersection





BIKEWAY FEATURES

PROPOSED IMPROVEMENTS

Protected Intersection





BIKEWAY FEATURES

FLOATING BUS STOP





BIKEWAY FEATURES

FLOATING BUS STOP



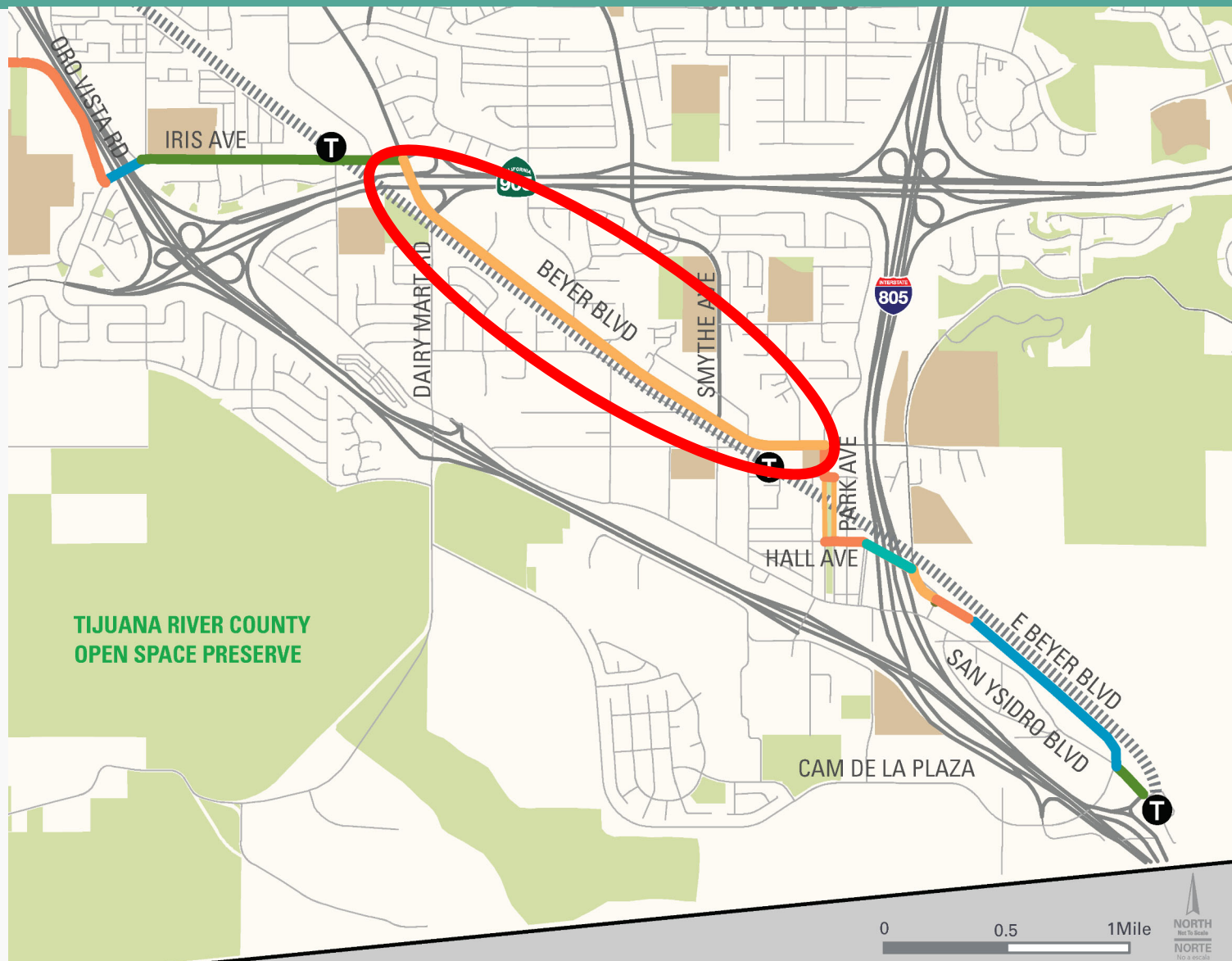


CHOOSING A PREFERRED ROUTE





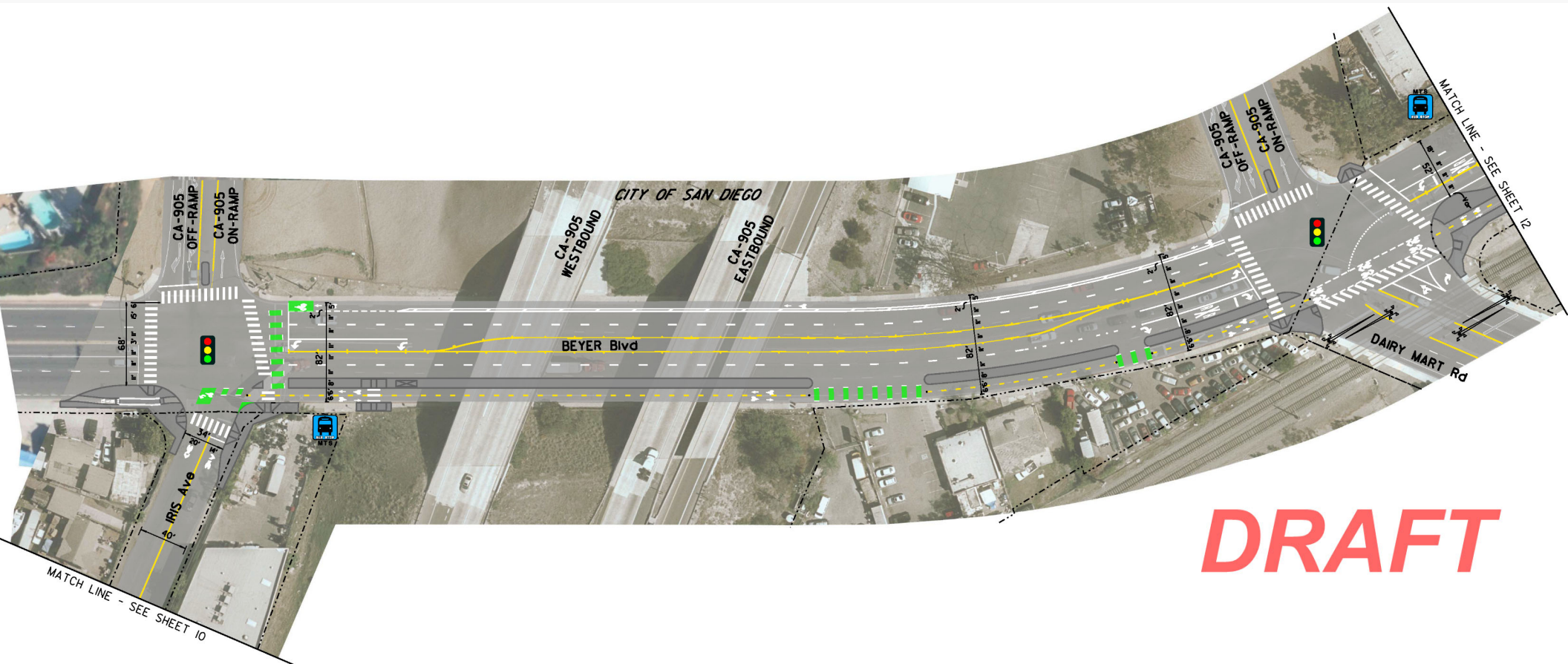
BEYER BOULEVARD





BEYER BOULEVARD

Iris Avenue to Dairy Mart Road

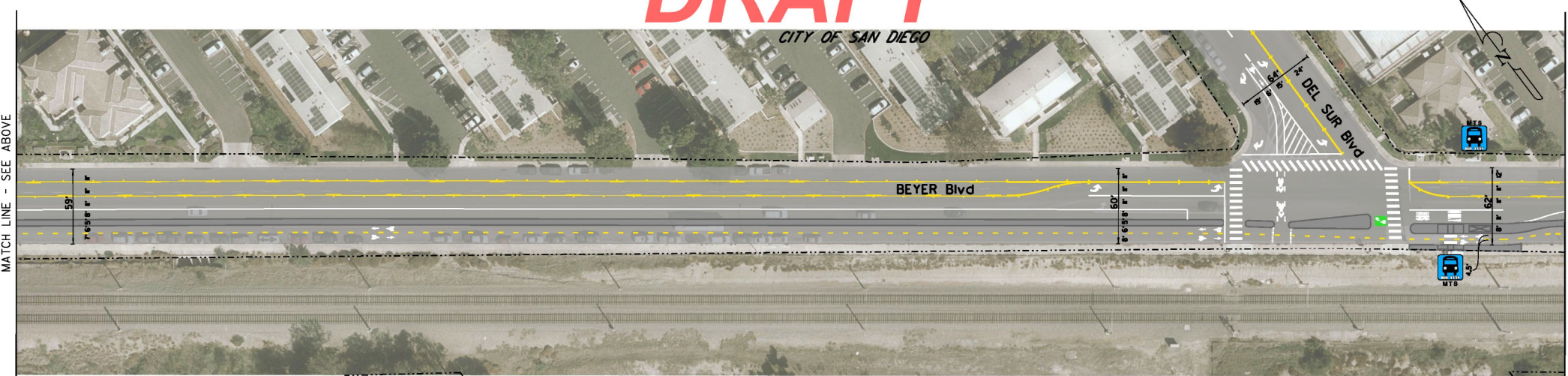
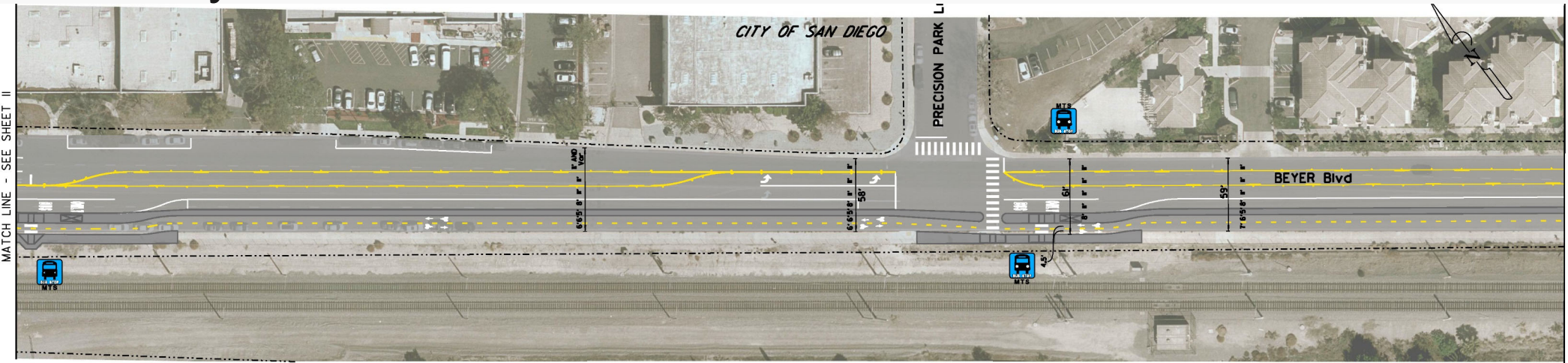


DRAFT



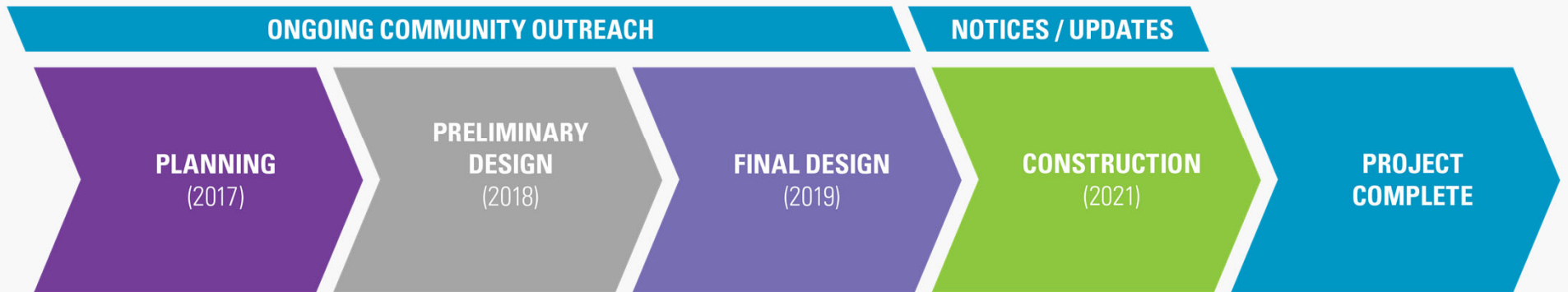
BEYER BOULEVARD

Dairy Mart Road to Del Sur Boulevard





TENTATIVE PROJECT TIMELINE





NEXT STEPS

- Environmental review / approval by SANDAG Transportation Committee and Board of Directors

Friday, December 14, 2018 | 9 – 12 a.m.

SANDAG Board Room

401 B Street, 7th Floor, San Diego



Alison Moss
Project Manager
San Diego Association of Governments
(619) 595-5354 / alison.moss@sandag.org

KeepSanDiegoMoving.com/BordertoBayshore