

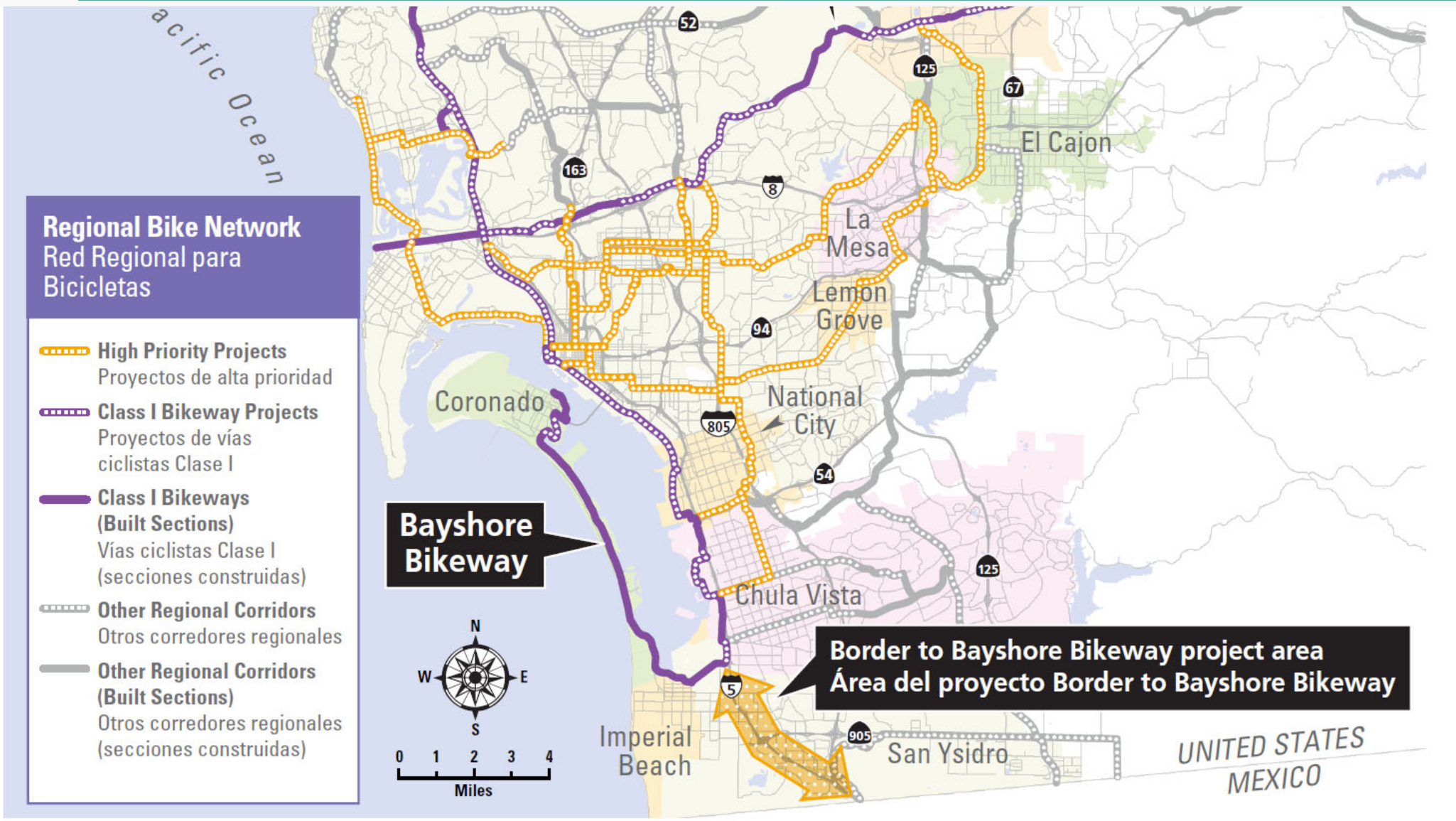


BORDER TO BAYSHORE BIKEWAY

San Ysidro Community Planning Group
October 15, 2018



HOW DOES THE BORDER TO BAYSHORE BIKEWAY FIT IN?





EVERYDAY PEOPLE, EVERYDAY TRIPS / SAFE “LOW STRESS STREETS”

No way

**Interested,
but concerned**

(potential bikeway users)

**Anywhere,
anytime**





1st COMMUNITY MEETING, SOUTHWEST HIGH SCHOOL



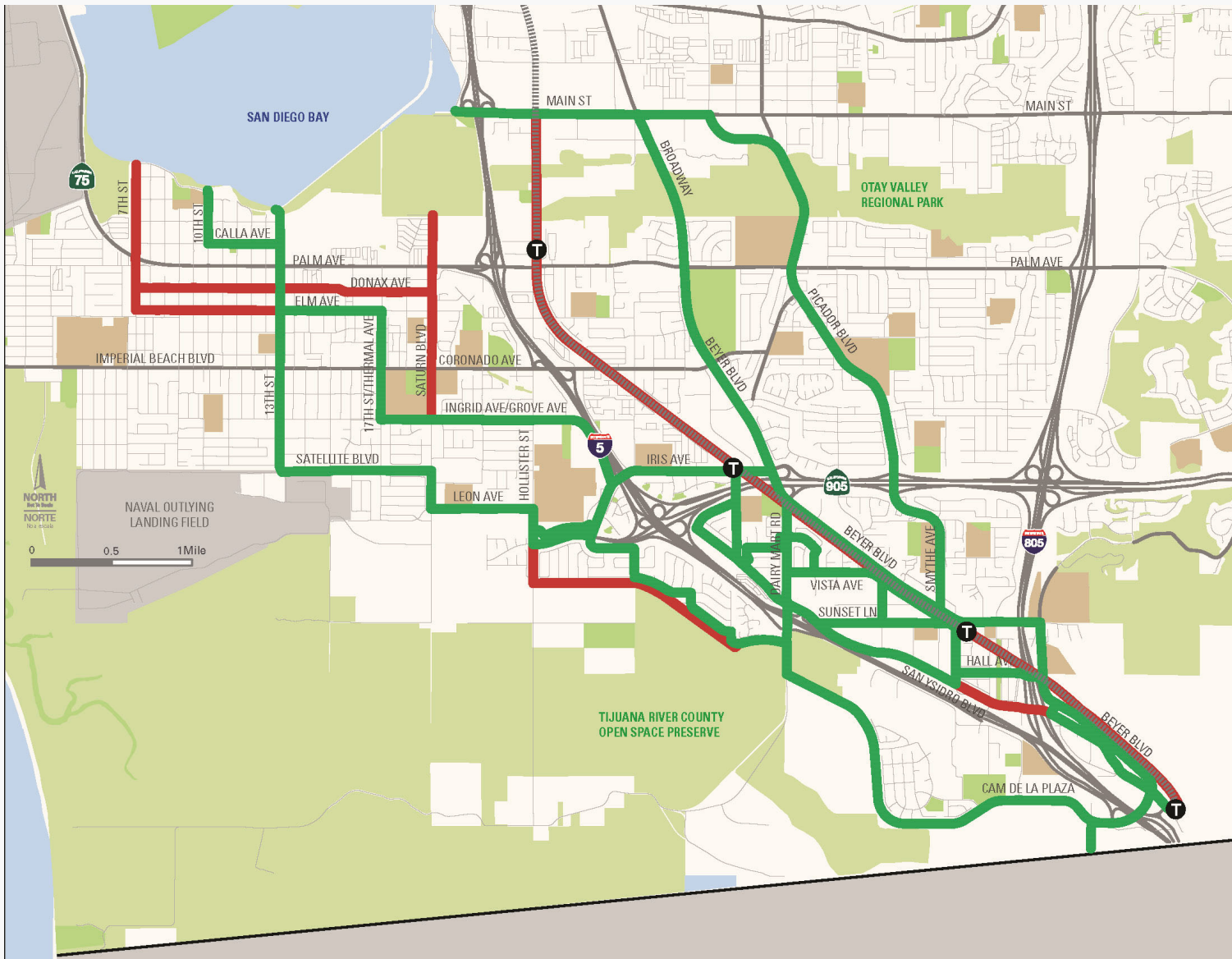


WHICH PLACES SHOULD BE CONNECTED BY THE BIKEWAY?





DEVELOPING BIKE ROUTE OPTIONS: CONSIDER ALL SUGGESTED OPTIONS



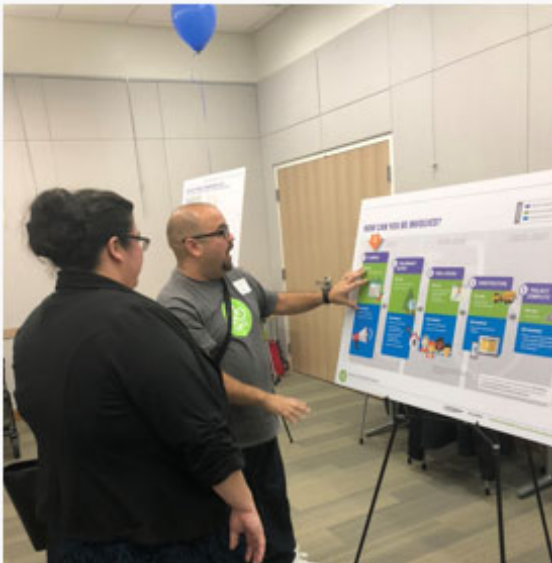


FINAL BIKE ROUTE OPTIONS





2nd COMMUNITY MEETING, IMPERIAL BEACH PUBLIC LIBRARY



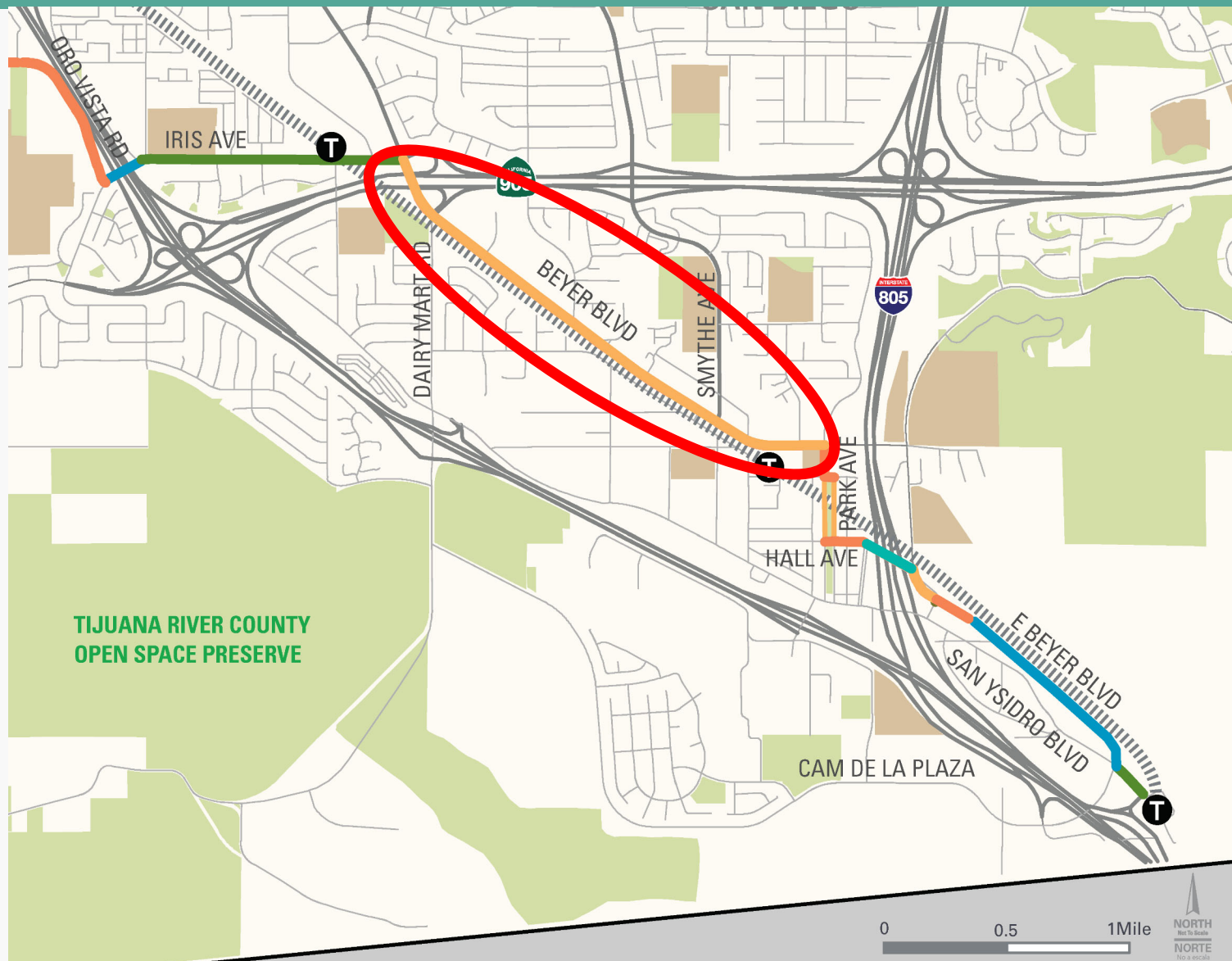


PREFERRED ROUTE





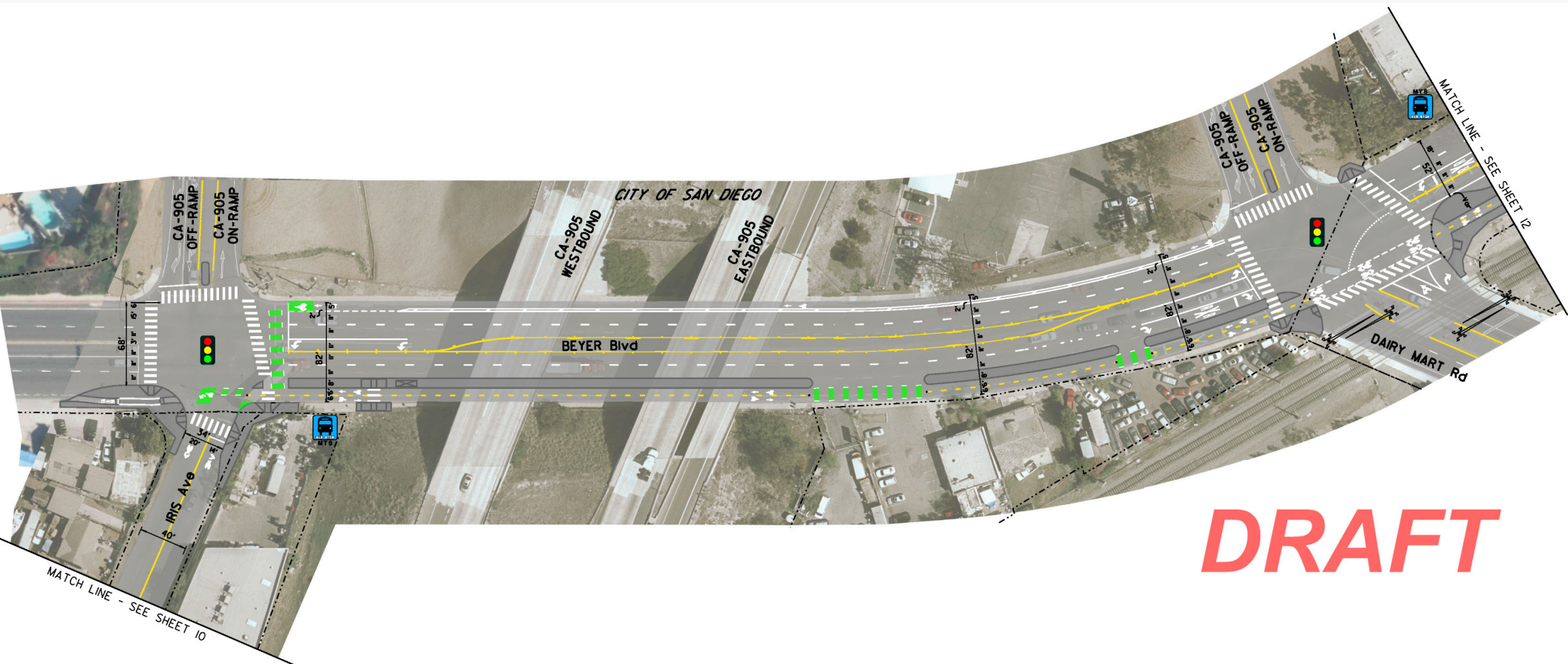
BEYER BOULEVARD





BEYER BOULEVARD

Iris Avenue to Dairy Mart Road

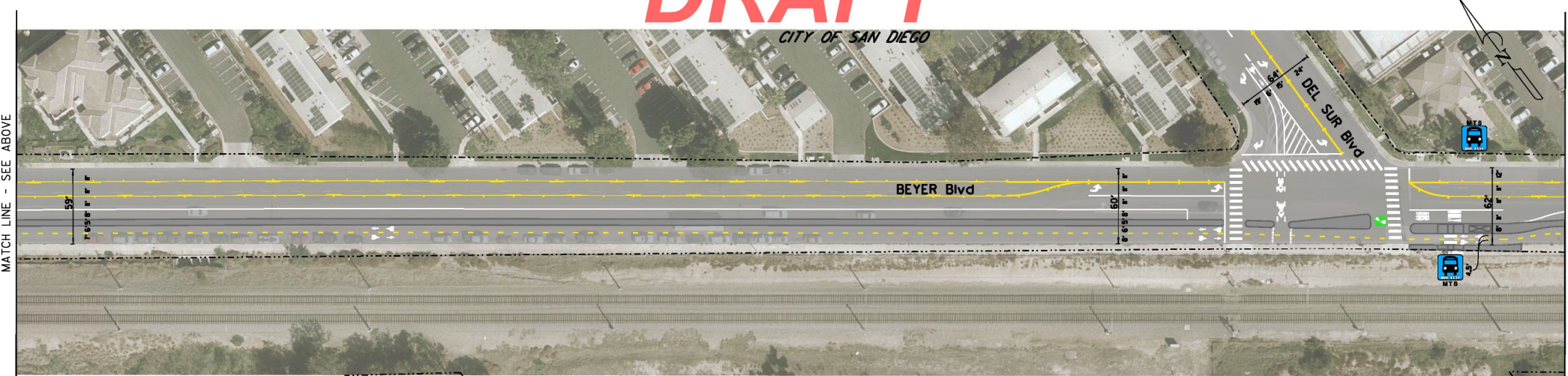
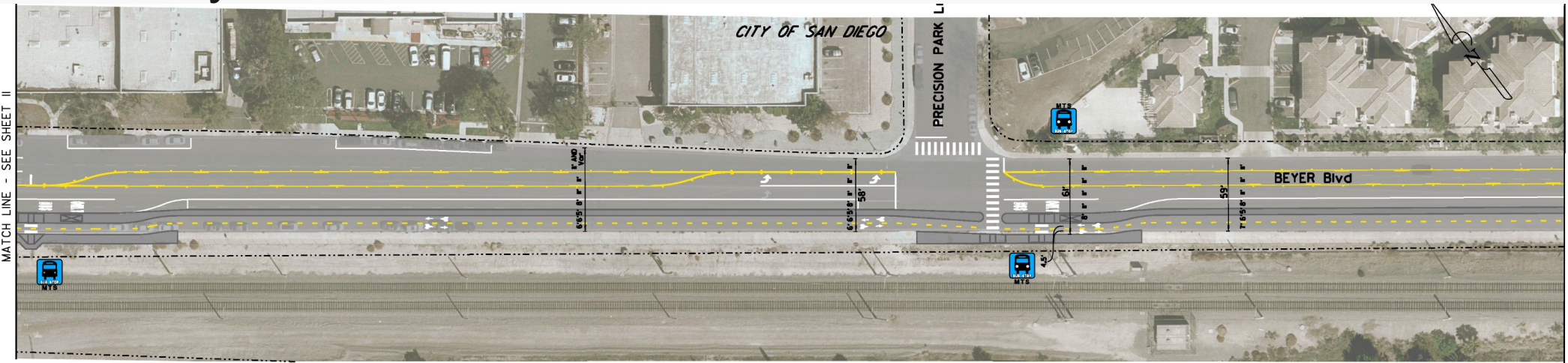


DRAFT



BEYER BOULEVARD

Dairy Mart Road to Del Sur Boulevard



MATCH LINE - SEE SHEET II

MATCH LINE - SEE BELOW

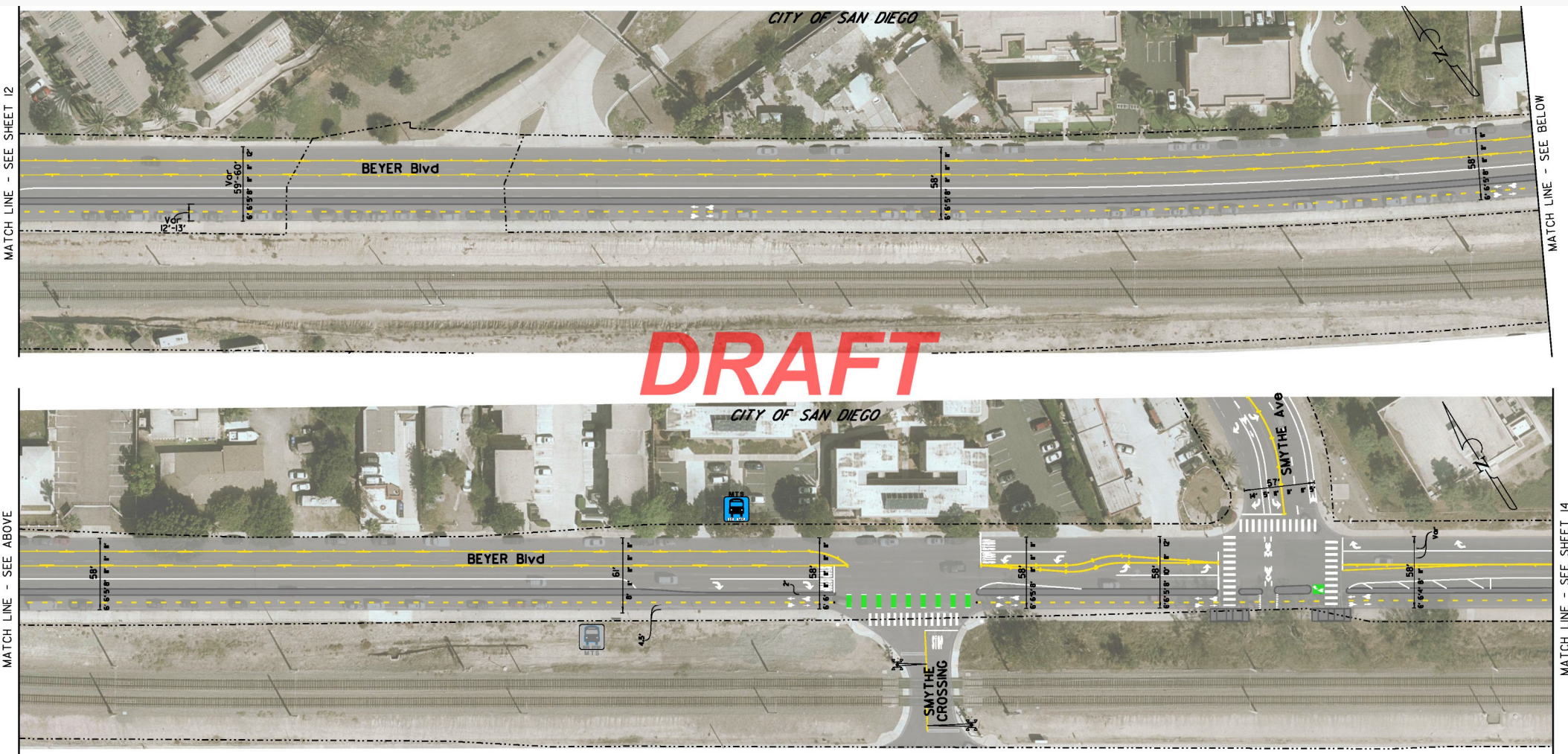
MATCH LINE - SEE ABOVE

MATCH LINE - SEE SHEET I3



BEYER BOULEVARD

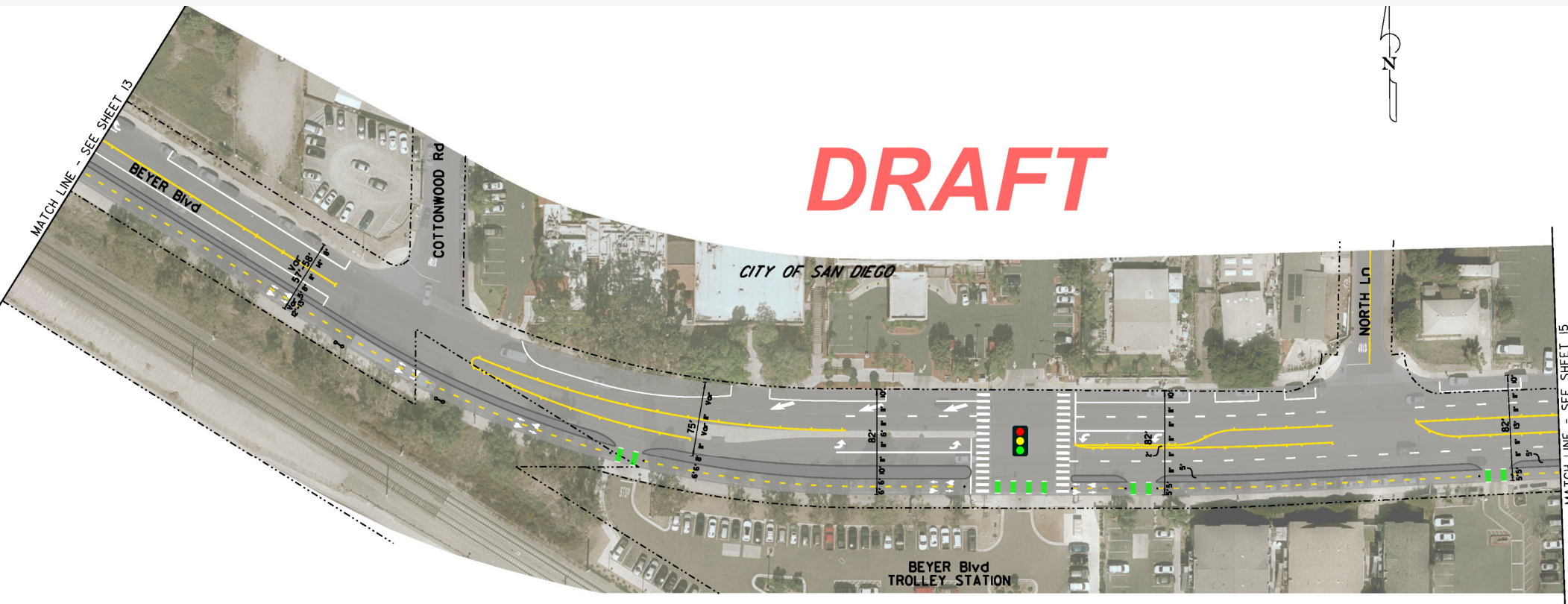
Del Sur Boulevard to Smythe Avenue





BEYER BOULEVARD

Smythe Avenue to West Park Avenue





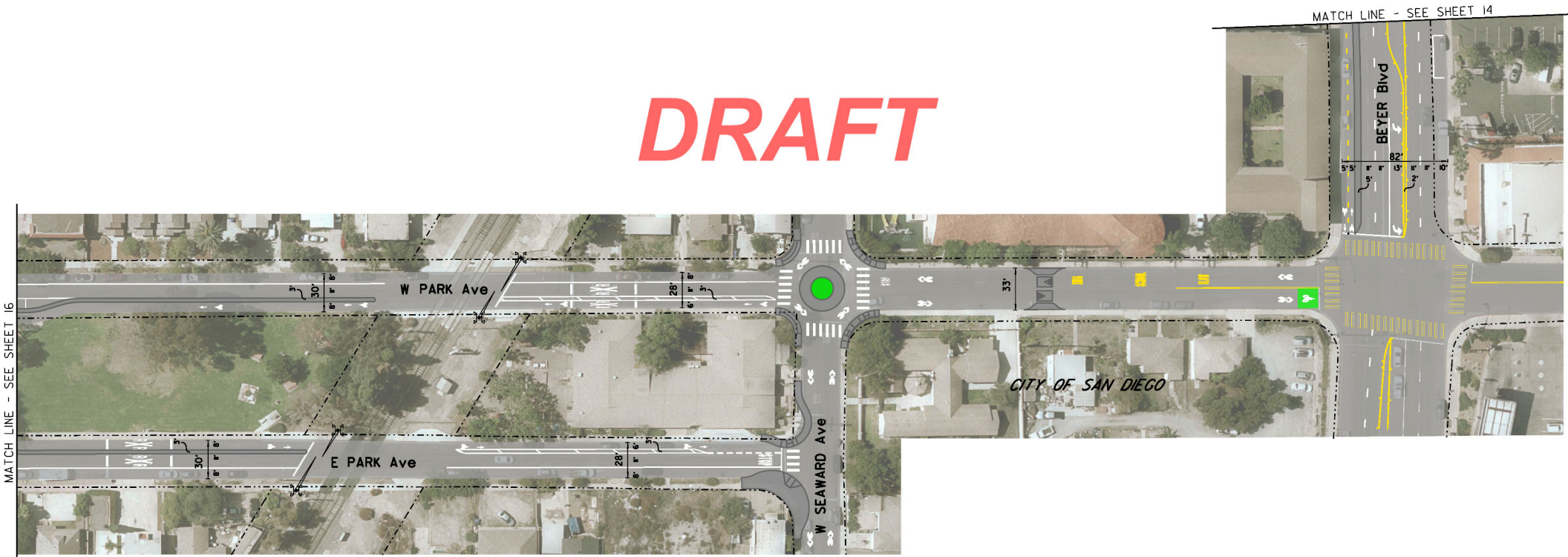
PARK AVENUE, HALL AVENUE, I-805





PARK AVENUE, SEAWARD AVENUE

DRAFT



MATCH LINE - SEE SHEET 16

MATCH LINE - SEE SHEET 14

CITY OF SAN DIEGO

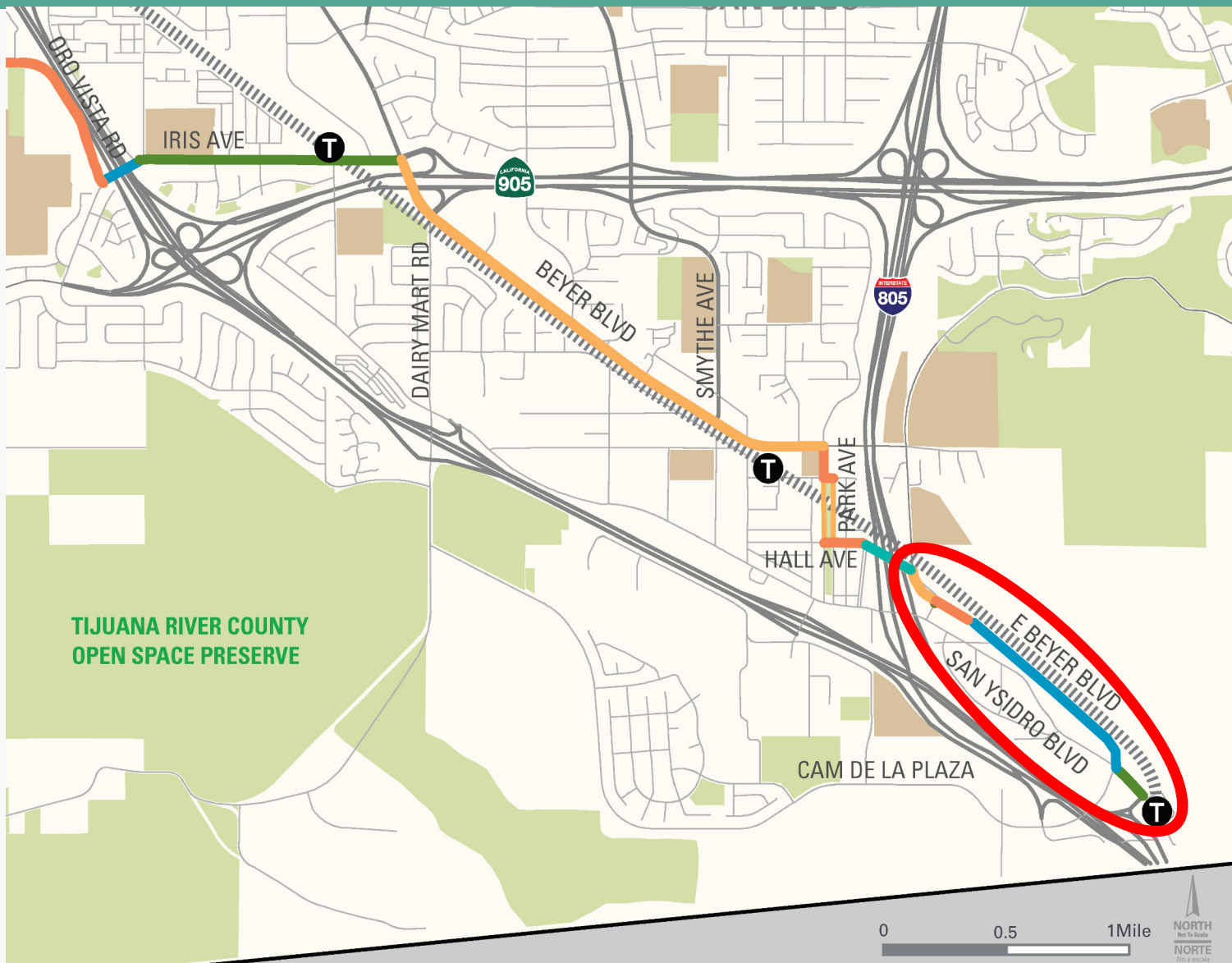


PARK AVENUE, HALL AVENUE, I-805 BRIDGE





EAST BEYER BOULEVARD





EAST BEYER BOULEVARD

I-805 Bridge to Center Street



DRAFT

CITY OF SAN DIEGO

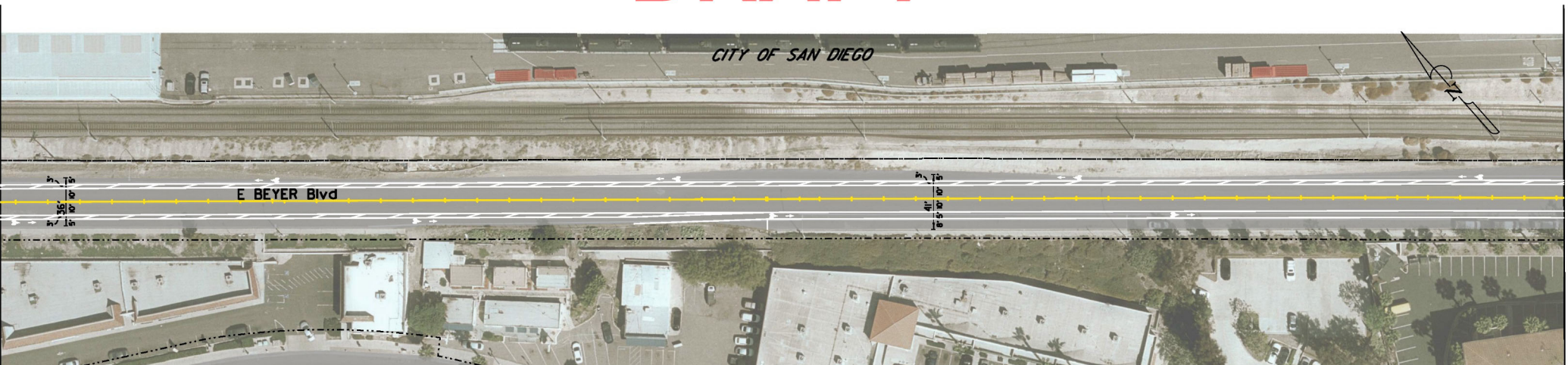


EAST BEYER BOULEVARD

Center Street to Rail Yard Driveway



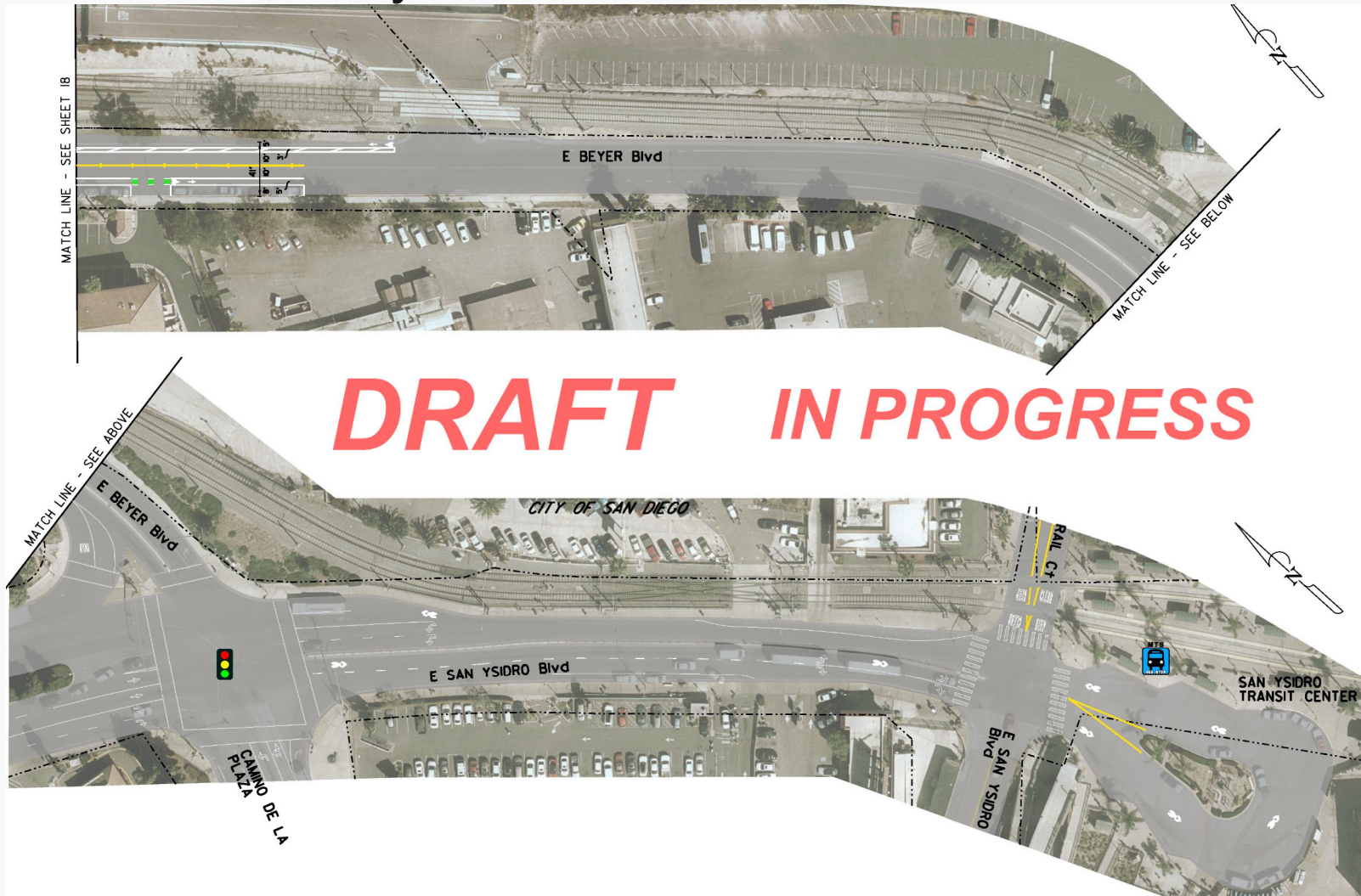
DRAFT





EAST BEYER BOULEVARD

Rail Yard Driveway to East San Ysidro Boulevard



DRAFT IN PROGRESS



NEXT STEPS

- Minor revisions to concept plans & traffic study
- Open House / Public Hearing
 - Mid-November 2018 (tentative)
 - Location TBD



TENTATIVE PROJECT TIMELINE





Alison Moss
Project Manager
San Diego Association of Governments
(619) 595-5354 / alison.moss@sandag.org

KeepSanDiegoMoving.com/BordertoBayshore