

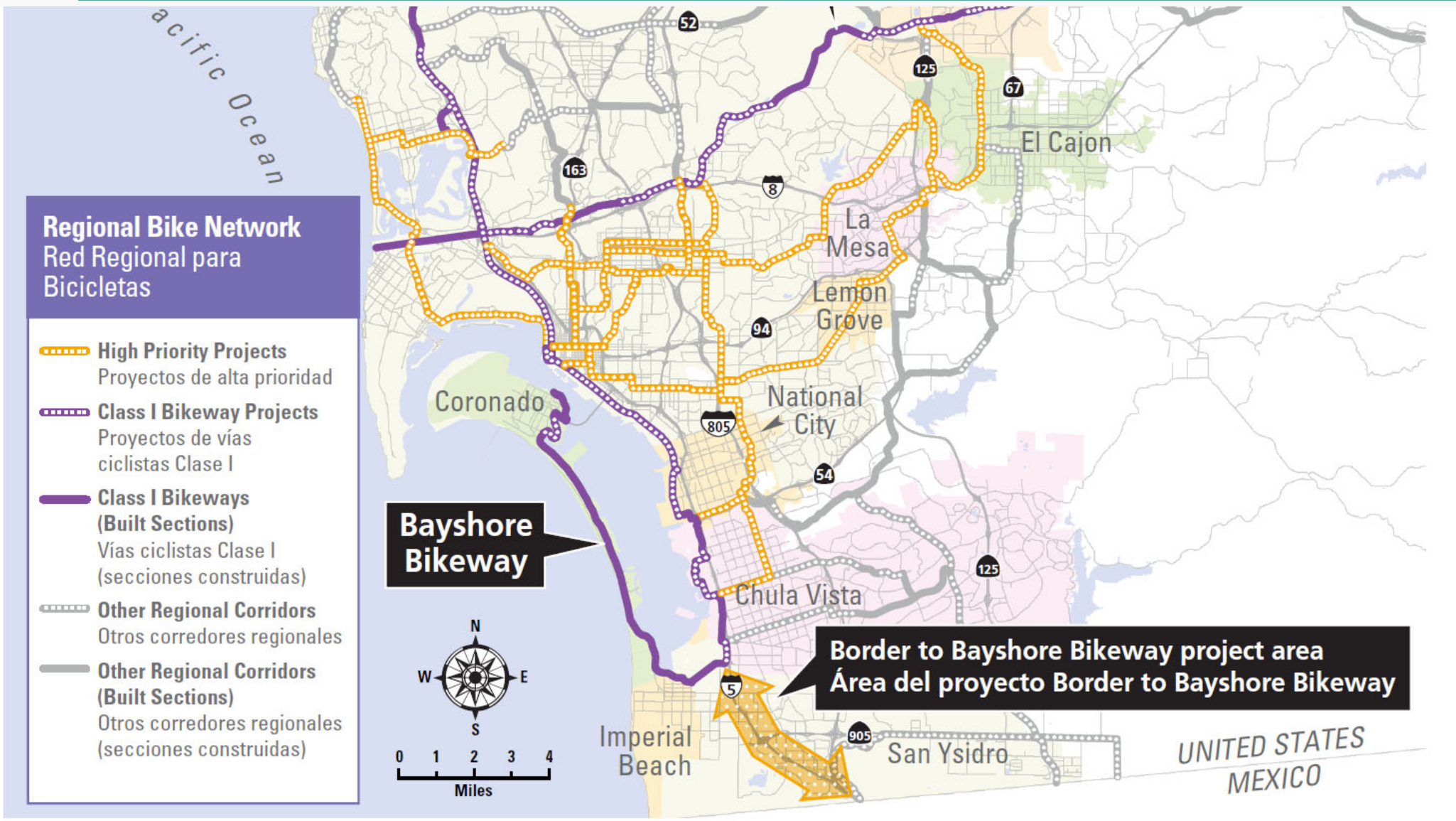


BORDER TO BAYSHORE BIKEWAY

Otay Mesa-Nestor Community Planning Group
October 10, 2018



HOW DOES THE BORDER TO BAYSHORE BIKEWAY FIT IN?





EVERYDAY PEOPLE, EVERYDAY TRIPS / SAFE “LOW STRESS STREETS”

No way

**Interested,
but concerned**

(potential bikeway users)

**Anywhere,
anytime**





1st COMMUNITY MEETING, SOUTHWEST HIGH SCHOOL



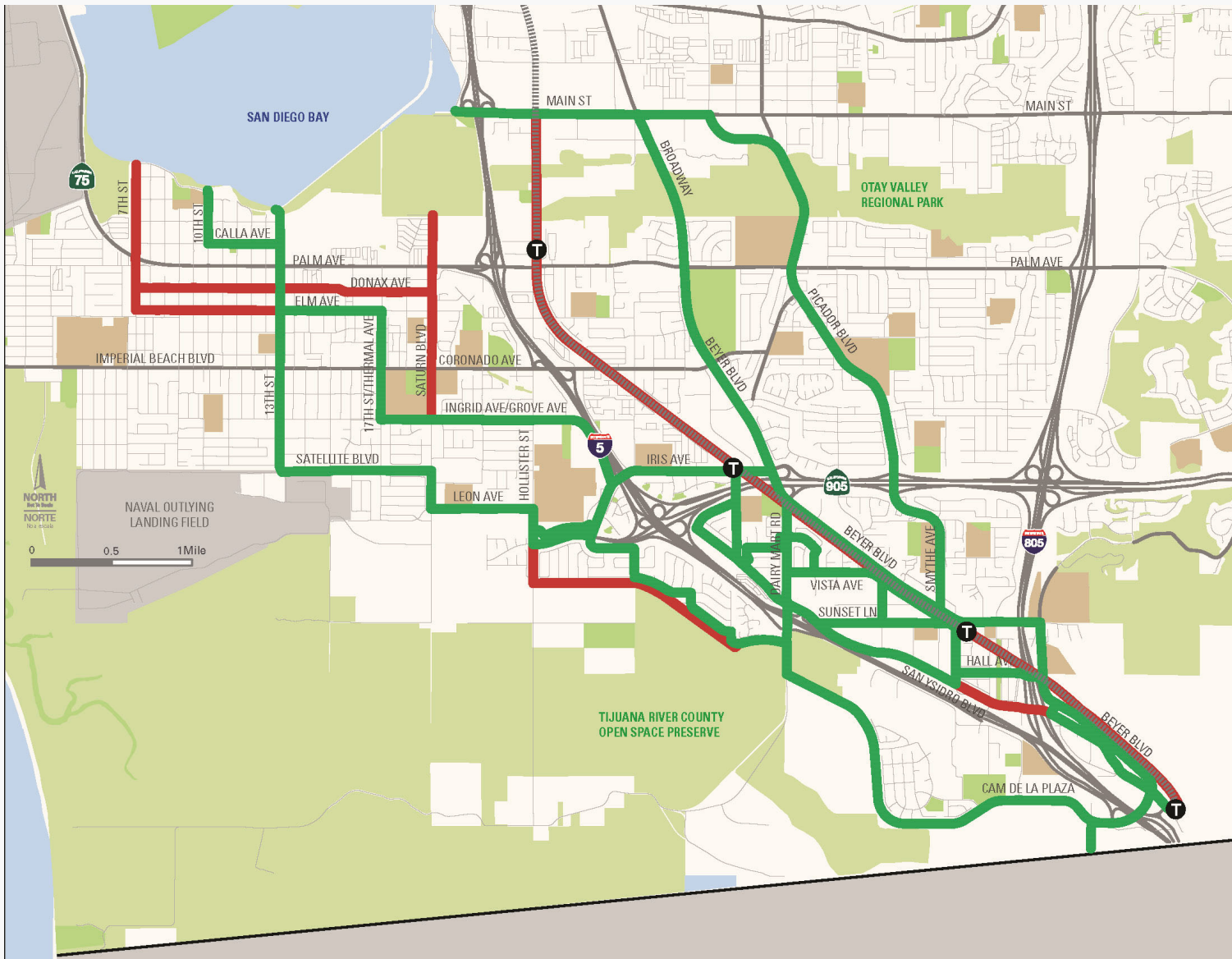


WHICH PLACES SHOULD BE CONNECTED BY THE BIKEWAY?





DEVELOPING BIKE ROUTE OPTIONS: CONSIDER ALL SUGGESTED OPTIONS



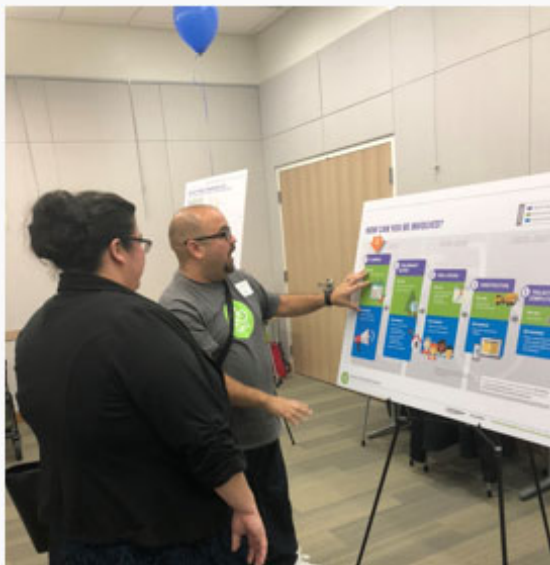
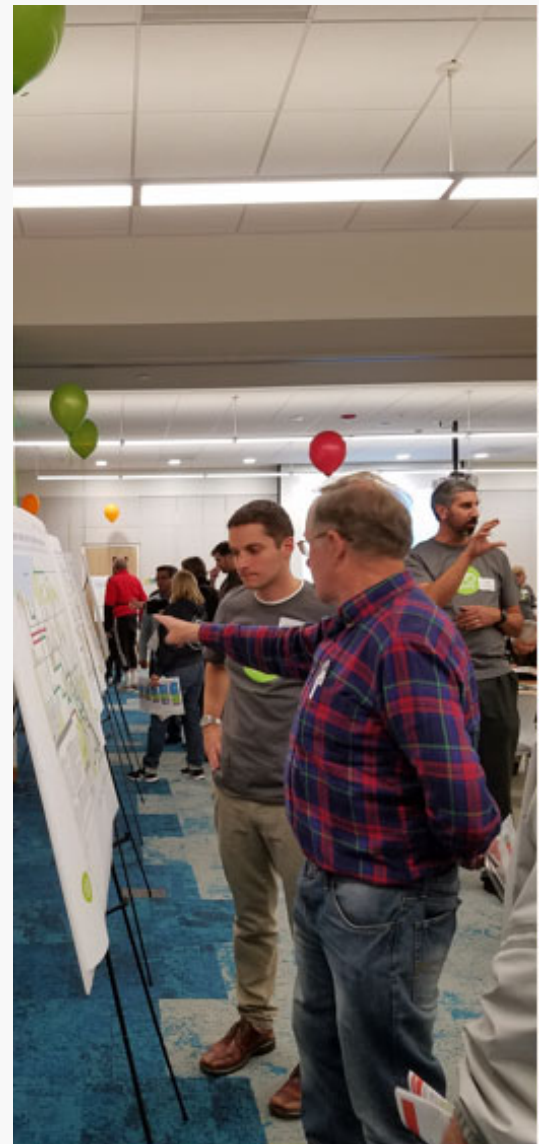


FINAL BIKE ROUTE OPTIONS



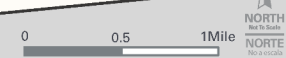


2nd COMMUNITY MEETING, IMPERIAL BEACH PUBLIC LIBRARY





PREFERRED ROUTE





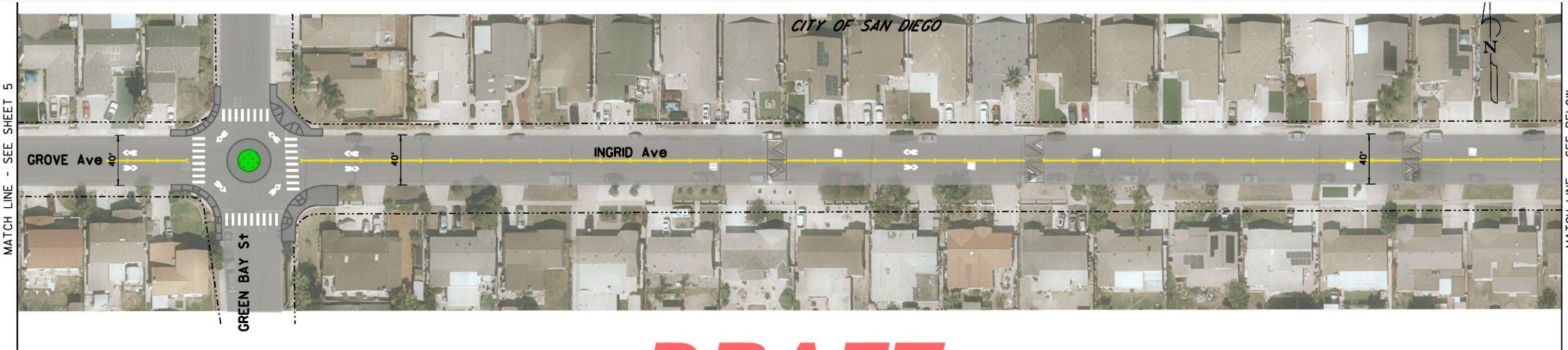
PREFERRED ROUTE

- Grove/Ingrid Avenue, Oro Vista Road and Iris Avenue
 - “Bicycle Boulevard” Design
 - Shared bike/vehicle lanes
 - Traffic calming features
 - Safer speeds, but no expected impact to overall travel time
 - Pedestrian improvements
 - Opportunities for aesthetic enhancements
 - Preservation of most on-street parking
 - Some red curbing is necessary to ensure visibility and safety

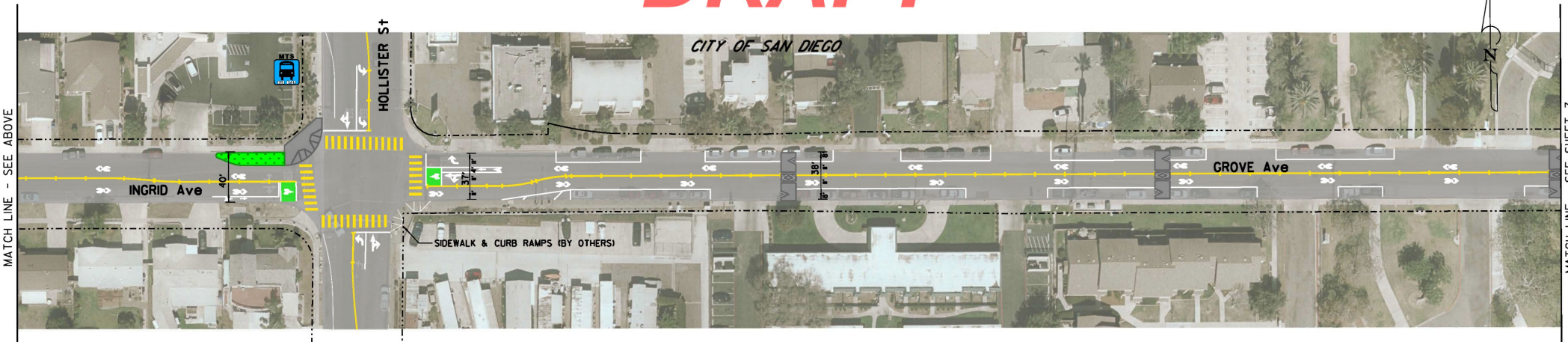


BORDER TO BAYSHORE BIKEWAY OTAY MESA-NESTOR

Grove Ave/Ingrid Ave – Green Bay St to Oro Vista Rd



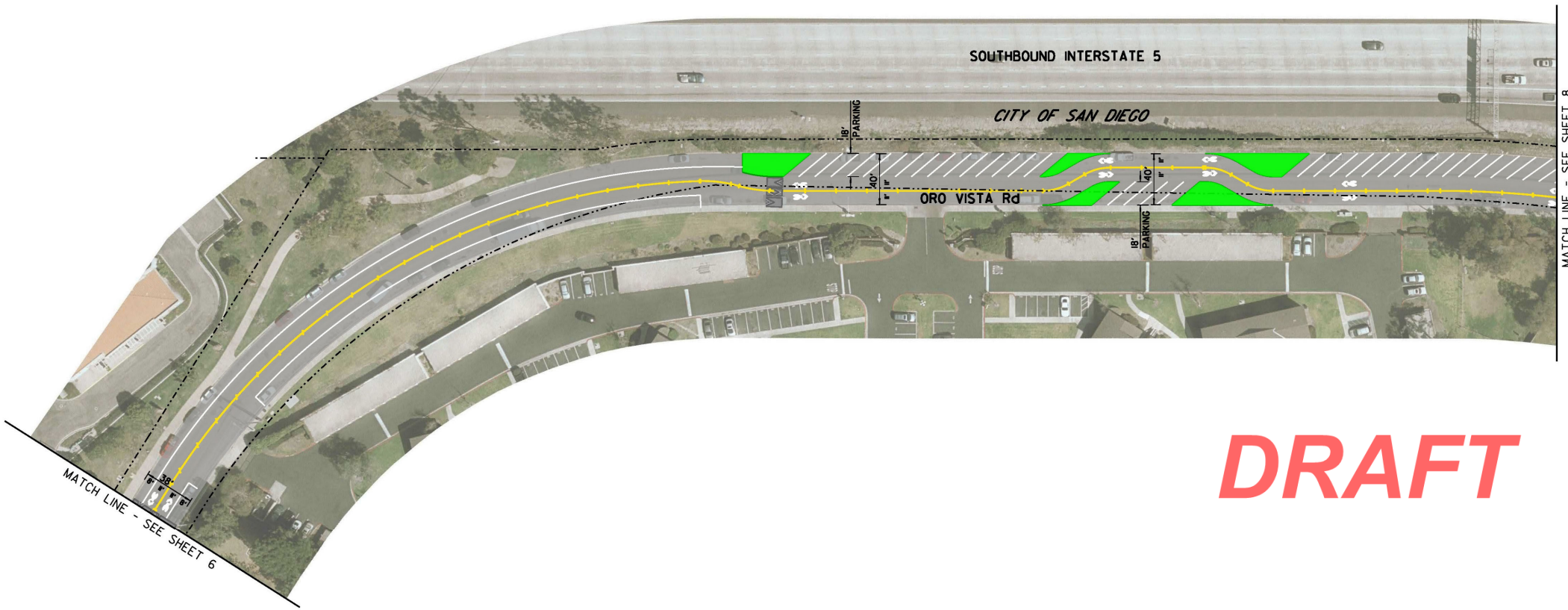
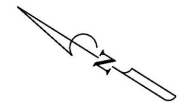
DRAFT





BORDER TO BAYSHORE BIKEWAY OTAY MESA-NESTOR

Oro Vista Road – Grove Avenue to Iris Avenue (1 of 2)

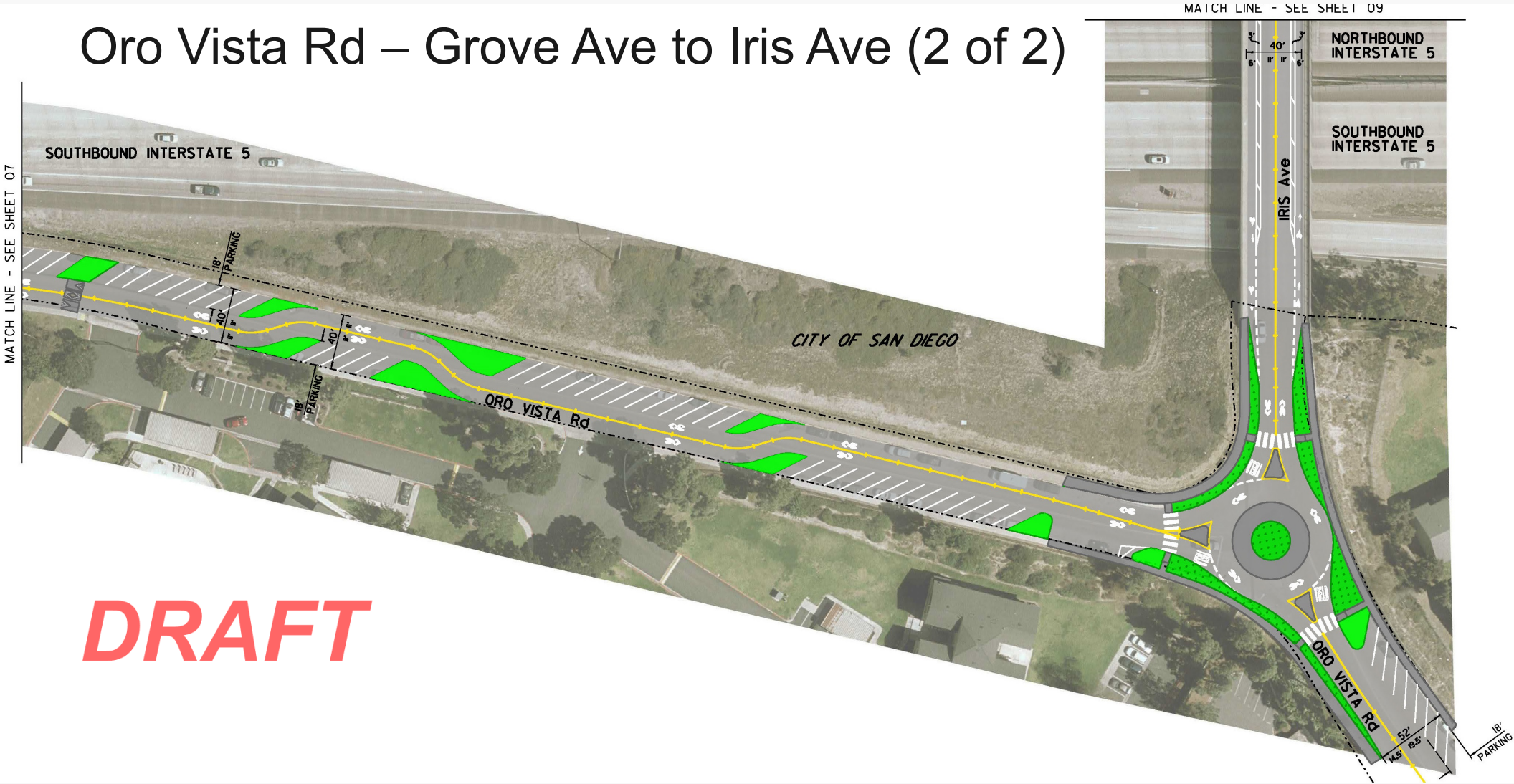


DRAFT



BORDER TO BAYSHORE BIKEWAY OTAY MESA-NESTOR

Oro Vista Rd – Grove Ave to Iris Ave (2 of 2)



DRAFT



NEXT STEPS

- San Ysidro Community Planning Group
 - October 15, 2018
- Open House / Public Hearing
 - Mid-November 2018 (tentative)
 - Location TBD



TENTATIVE PROJECT TIMELINE





Alison Moss
Project Manager
San Diego Association of Governments
(619) 595-5354 / alison.moss@sandag.org

KeepSanDiegoMoving.com/BordertoBayshore